



United States Department of Agriculture
National Agricultural Statistics Service

Acreage
Grain Stocks
Rice Stocks

Executive Summary

Lance Honig, Chief
Crops Branch

June 30, 2017

12:00 P.M.



Contents

Field Crops	Stocks
Planted Acres	Corn
Harvested Acres	Soybeans
	Sorghum
	Rice
	All Wheat
	Barley
	Oats
	Dry Peas
	Lentils
	A. Winter Peas
	Chickpeas



Survey Overview

	June APS	June Area	Off-Farm Grain Stock Survey
Survey Type	Farmer Reported	Farmer Reported	Reported
Collection Method	Mail, Phone, Internet, Personal Interview	Personal Interview	Mail, Phone, Internet, Personal Interview
Crops Included	Field Crops	Field Crops	Grain and Oilseed On Hand
States	All Except HI	All Except AK and HI	All Except AK, HI, and NV
Sample Size	69,690 Farms	10,960 Segments	~ 8,500 Facilities
Collection Period	May 30 – June 16	May 30 – June 14	May 30 – June 16



Principal Crops Planted Acreage

United States

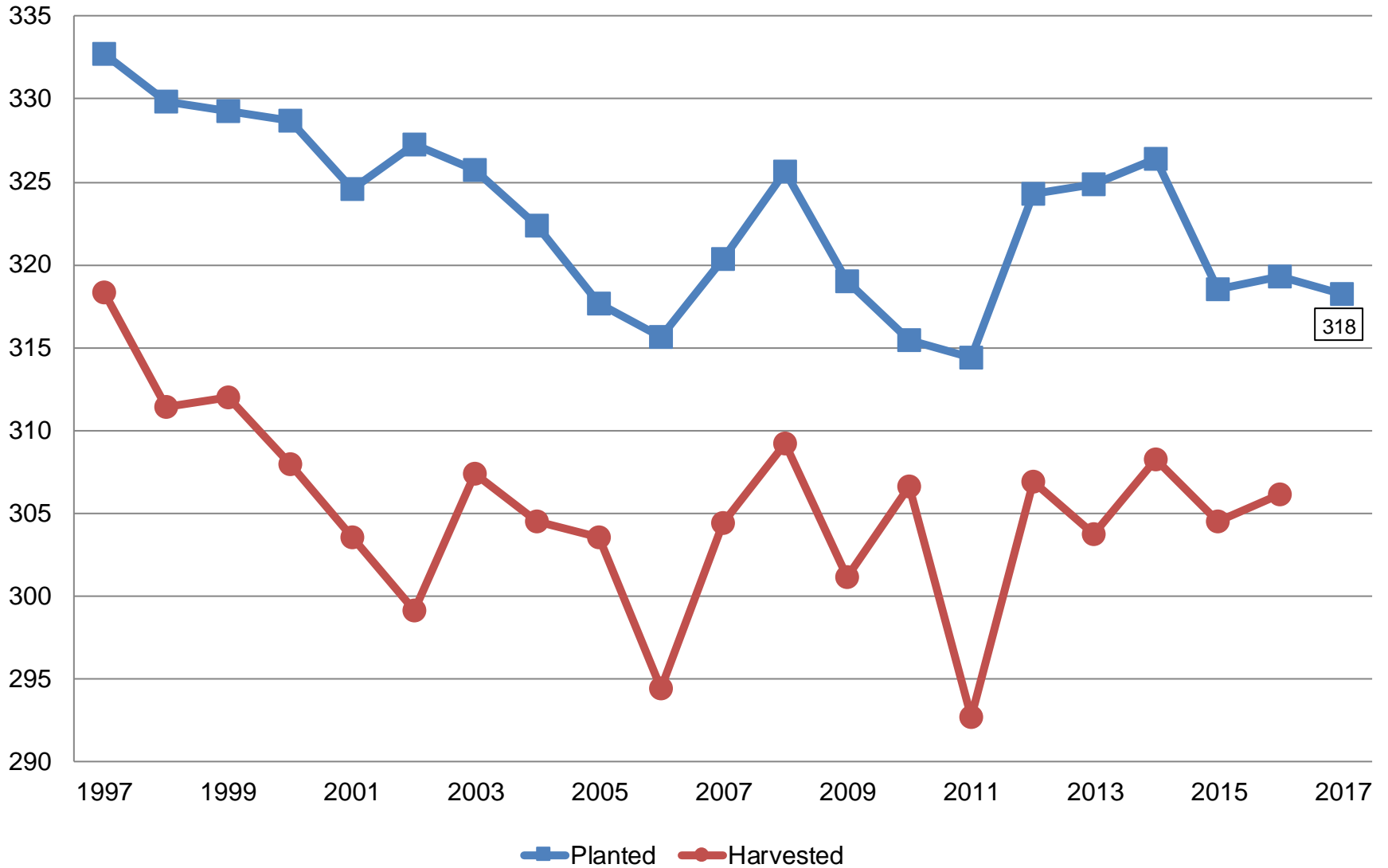
Year	Principal Crops	Change From Previous Year
	<i>Million Acres</i>	
2008	325.6	+5.3
2009	319.0	-6.6
2010	315.4	-3.6
2011	314.3	-1.1
2012	324.3	+10.0
2013	324.9	+0.6
2014	326.4	+1.6
2015	319.0	-7.5
2016	319.2	+0.3
2017	318.2	-1.1



Principal Crops

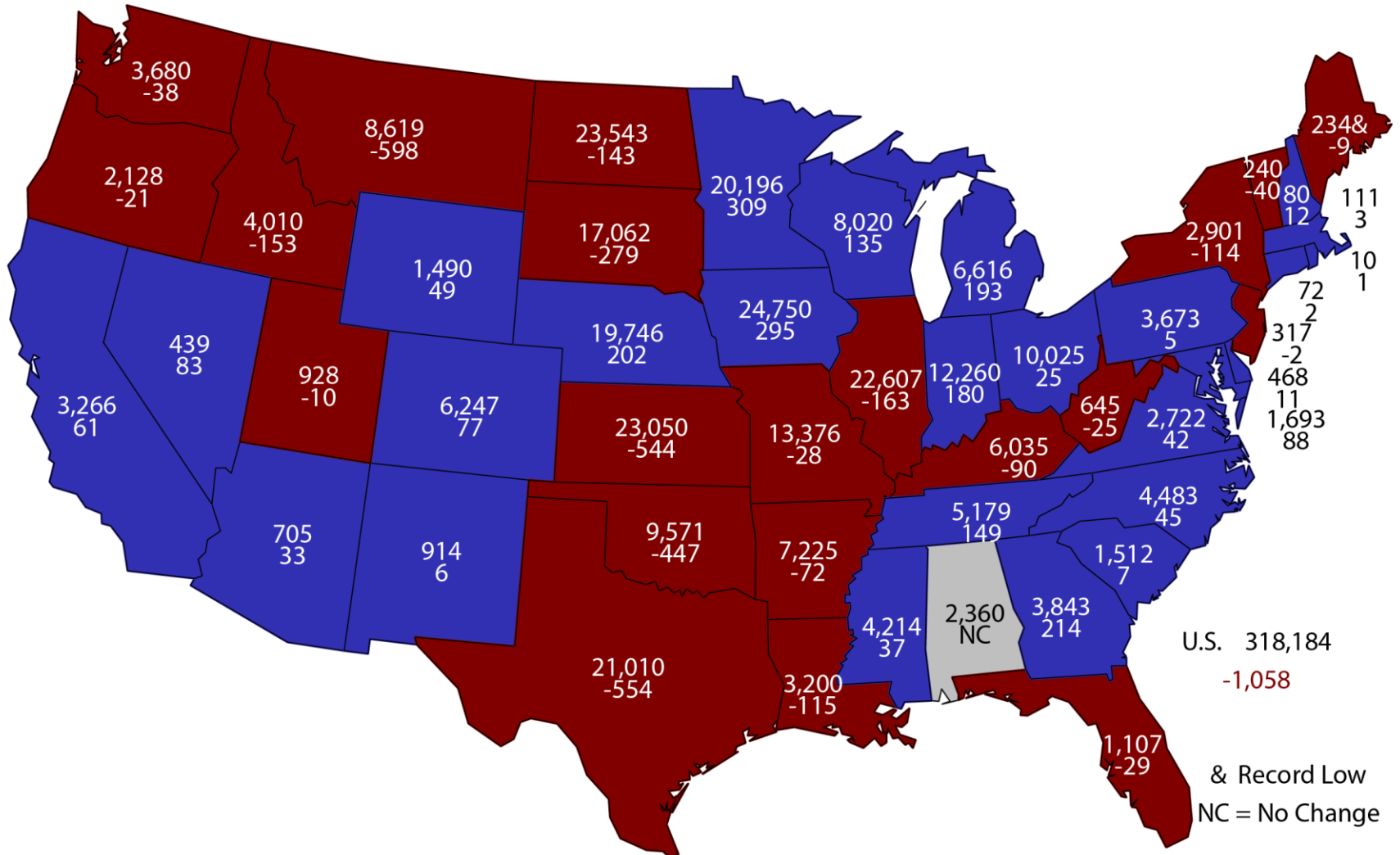
United States

Million Acres



2017 Principal Crops Planted Area

(000) Acres and Change From Previous Year



U.S. 318,184
-1,058

& Record Low
NC = No Change

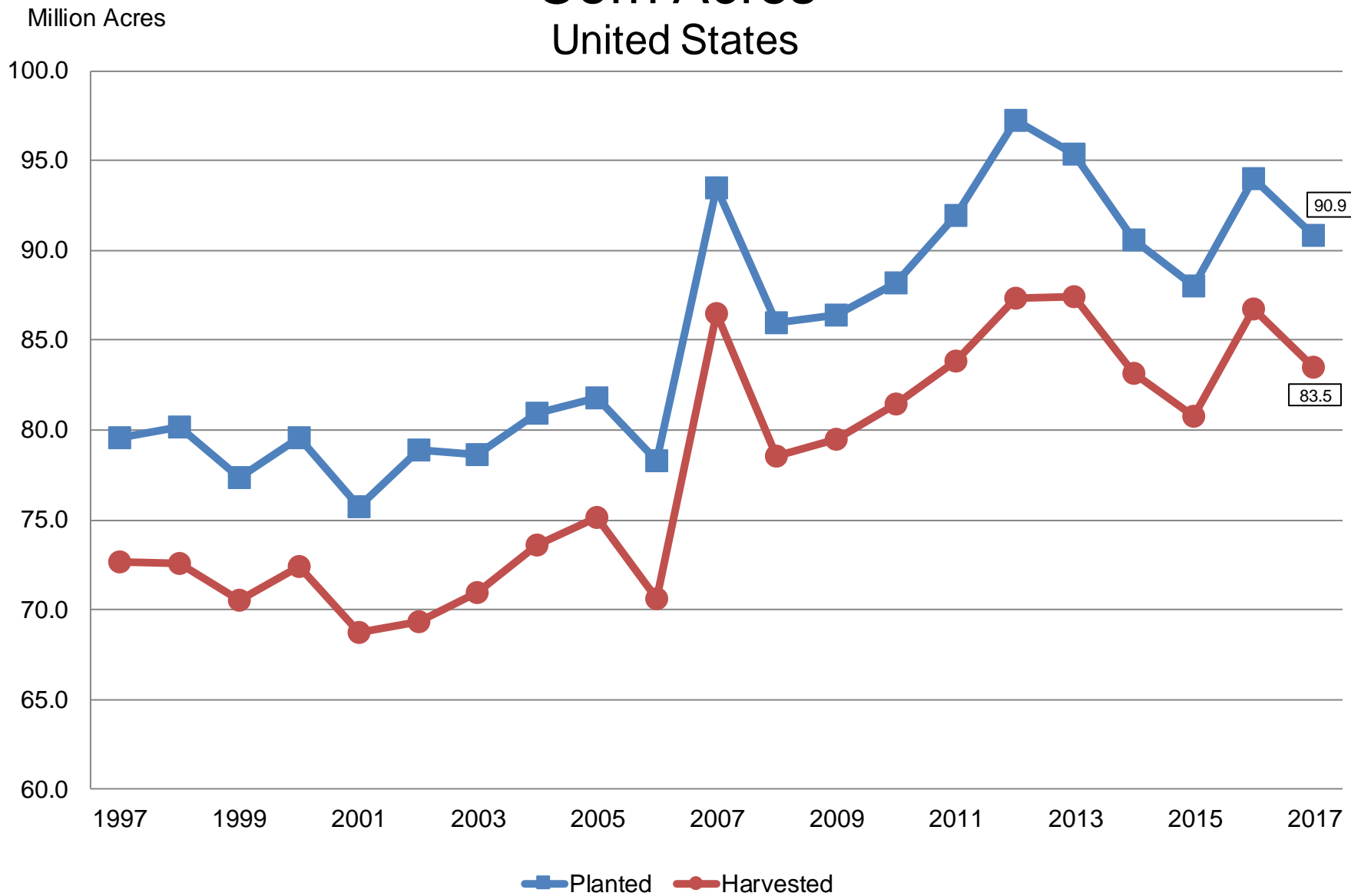


June 2017 Acreage

Crop	Unit	June 2017	% Change From Previous Estimate	% Change From Previous Season
Corn				
Planted	Mil Ac	90.9	+1.0	-3.3
Harvested	Mil Ac	83.5	NA	-3.7

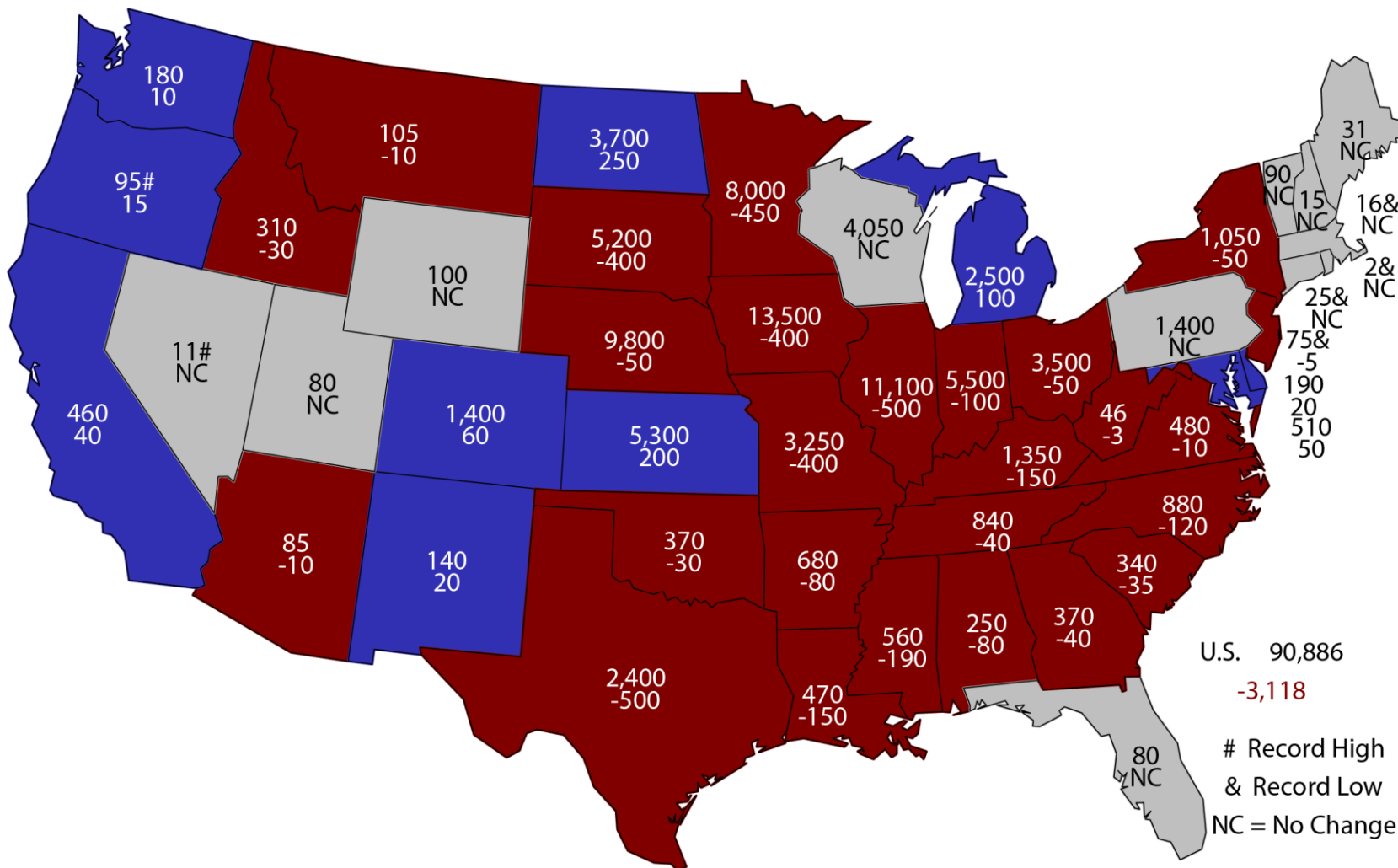


Corn Acres United States



2017 Corn Planted Area

(000) Acres and Change From Previous Year



U.S. 90,886
 -3,118
 # Record High
 & Record Low
 NC = No Change



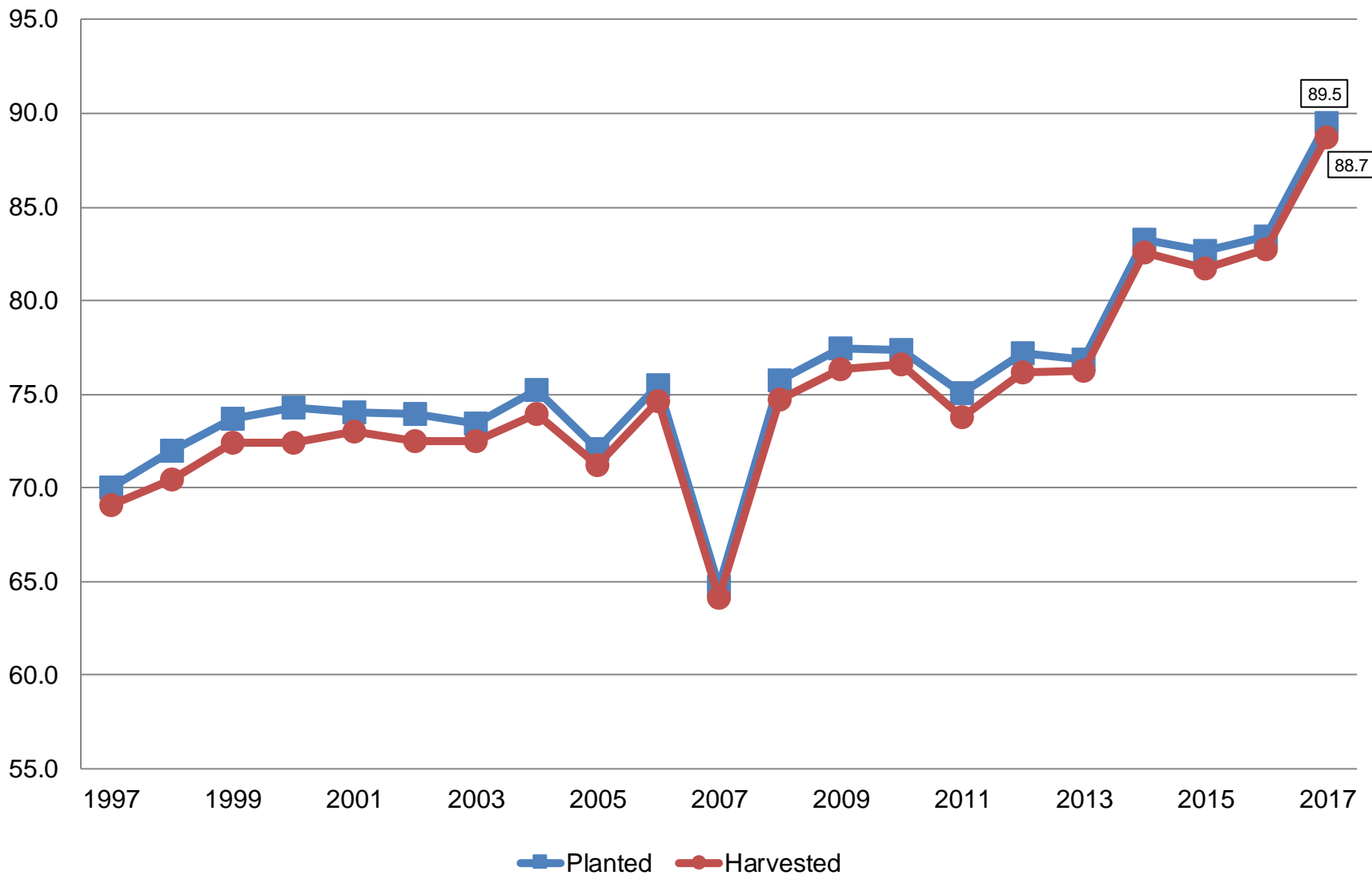
June 2017 Acreage

Crop	Unit	June 2017	% Change From Previous Estimate	% Change From Previous Season
Soybeans				
Planted	Mil Ac	89.5	+<0.1	+7.3
Harvested	Mil Ac	88.7	NA	+7.2



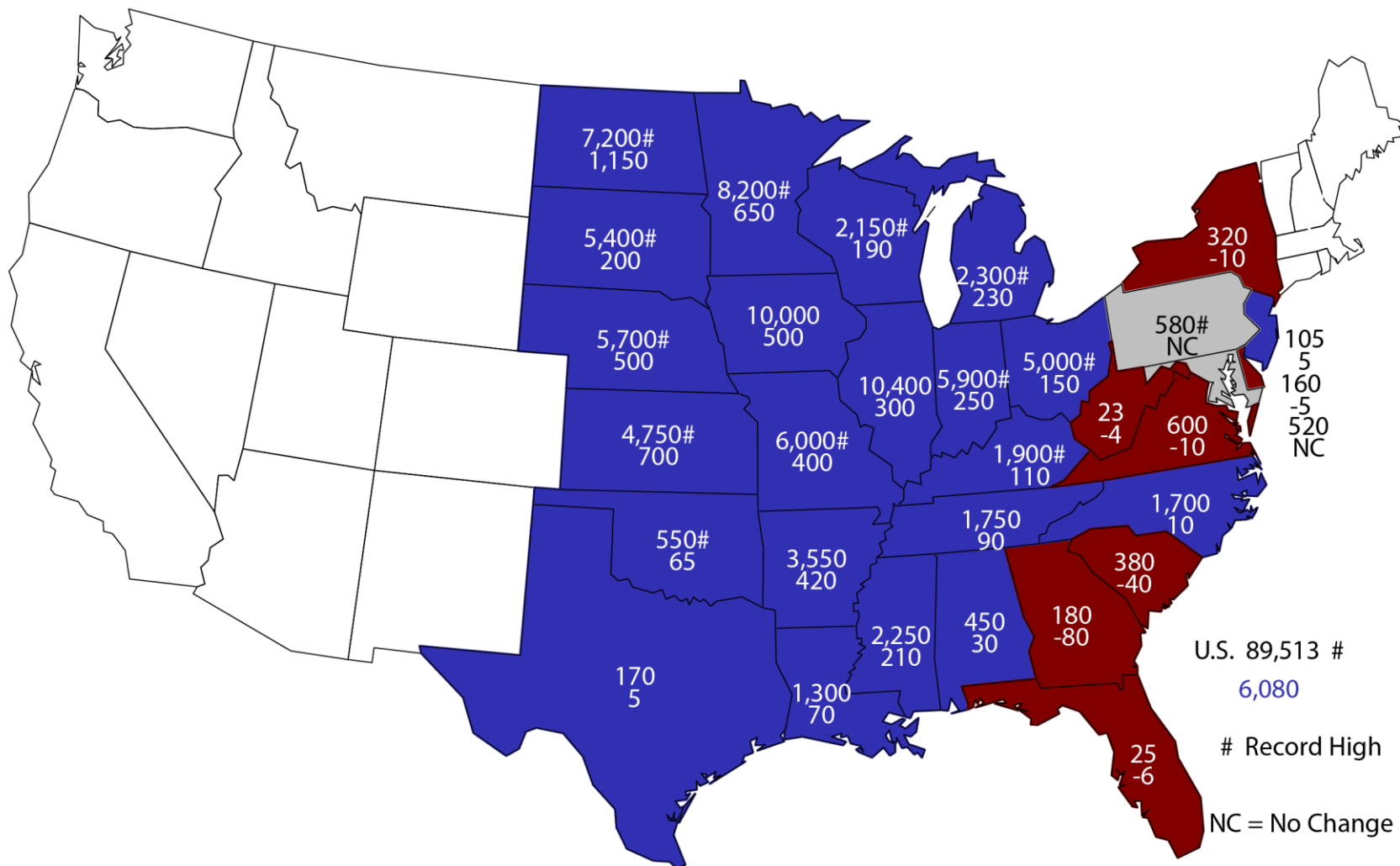
Soybean Acres United States

Million Acres



2017 Soybean Planted Area

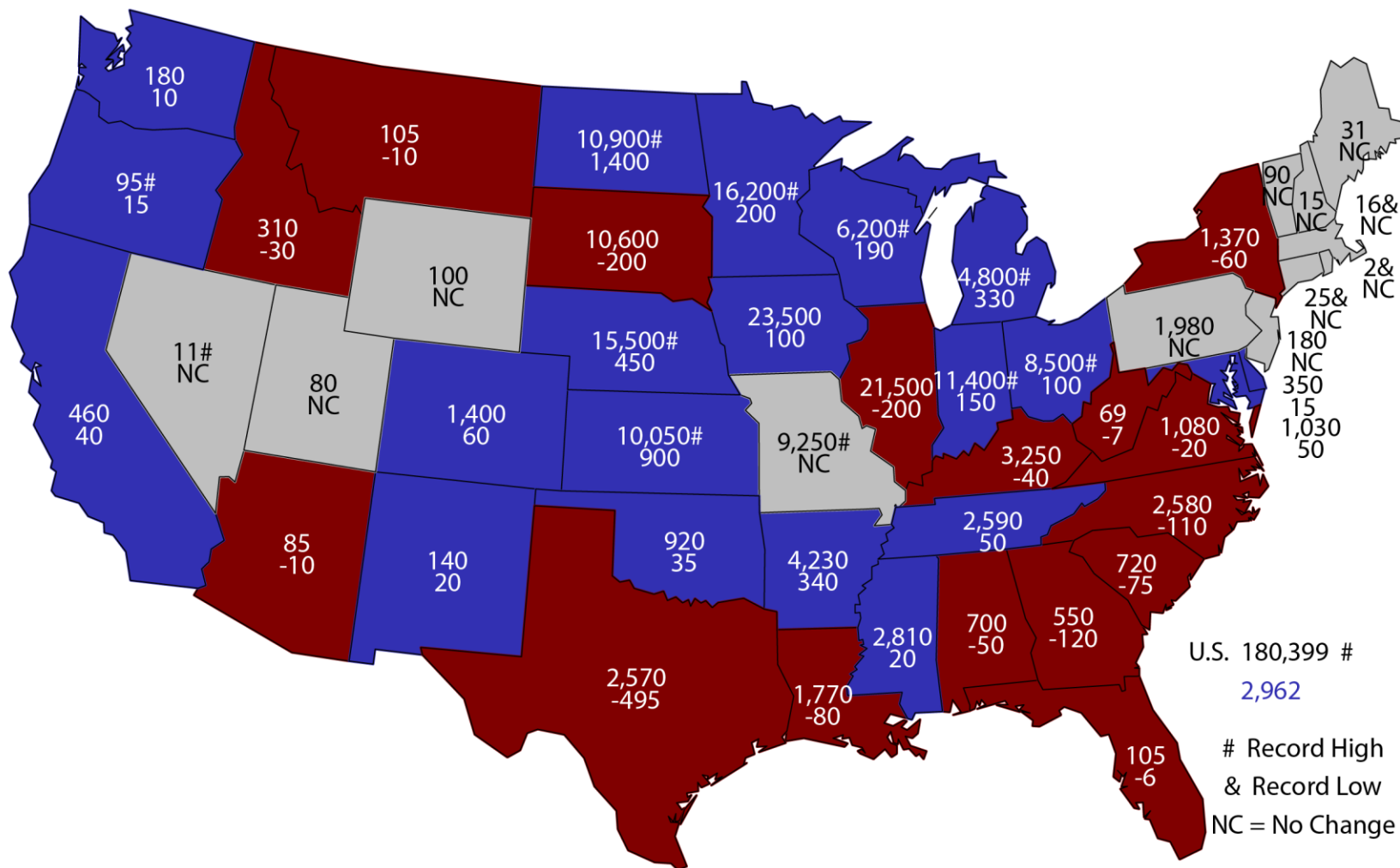
(000) Acres and Change From Previous Year



U.S. 89,513 #
 6,080
 # Record High
 NC = No Change

2017 Combined Corn & Soybean Planted Area

(000) Acres and Change From Previous Year





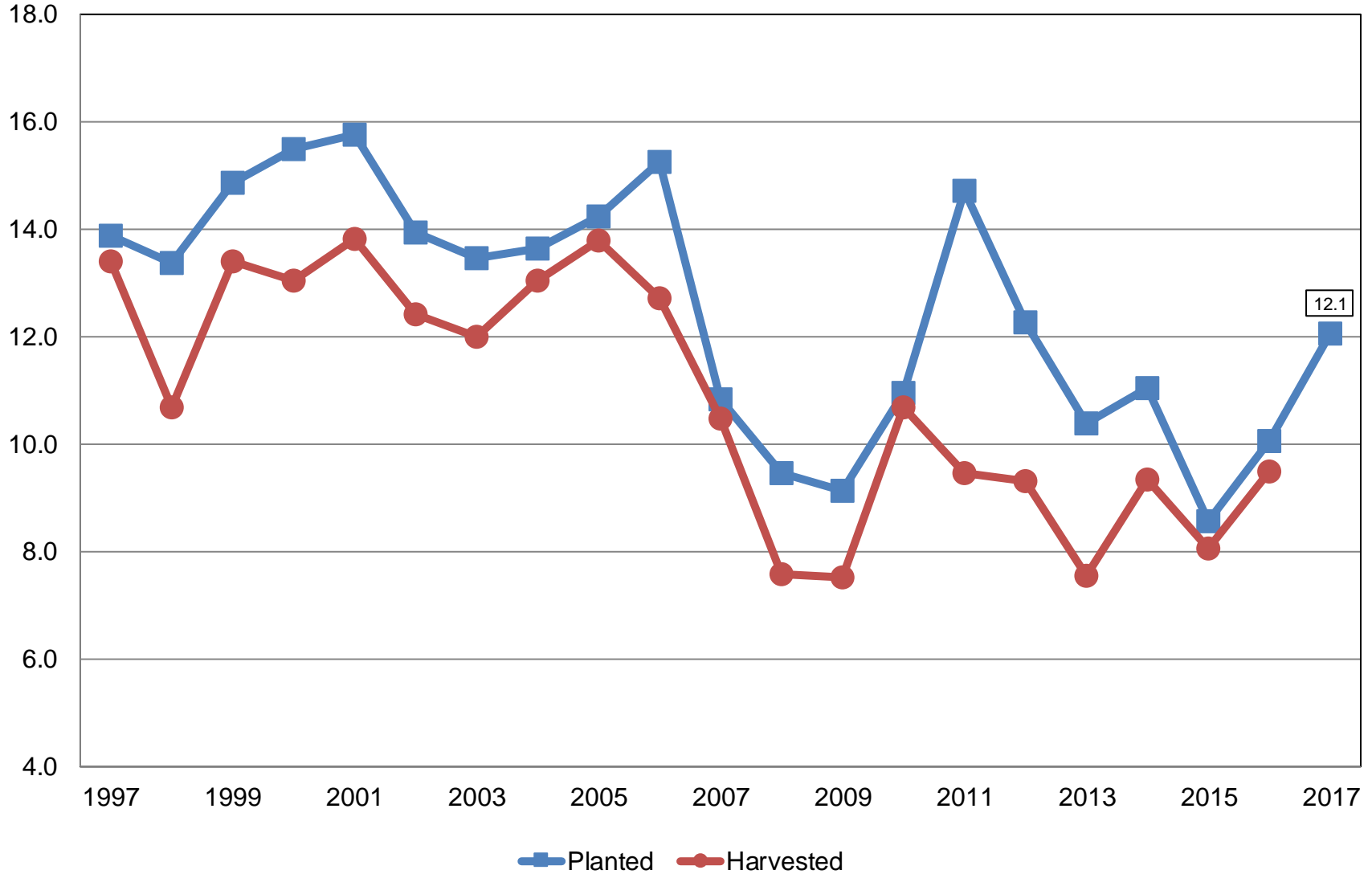
June 2017 Acreage

Crop	Unit	June 2017	% Change From Previous Estimate	% Change From Previous Season
All Cotton				
Planted	Mil Ac	12.1	-1.5	+19.7
Upland Cotton				
Planted	Mil Ac	11.8	-1.6	+19.5
Pima Cotton				
Planted	Thou Ac	252	+8.6	+29.6



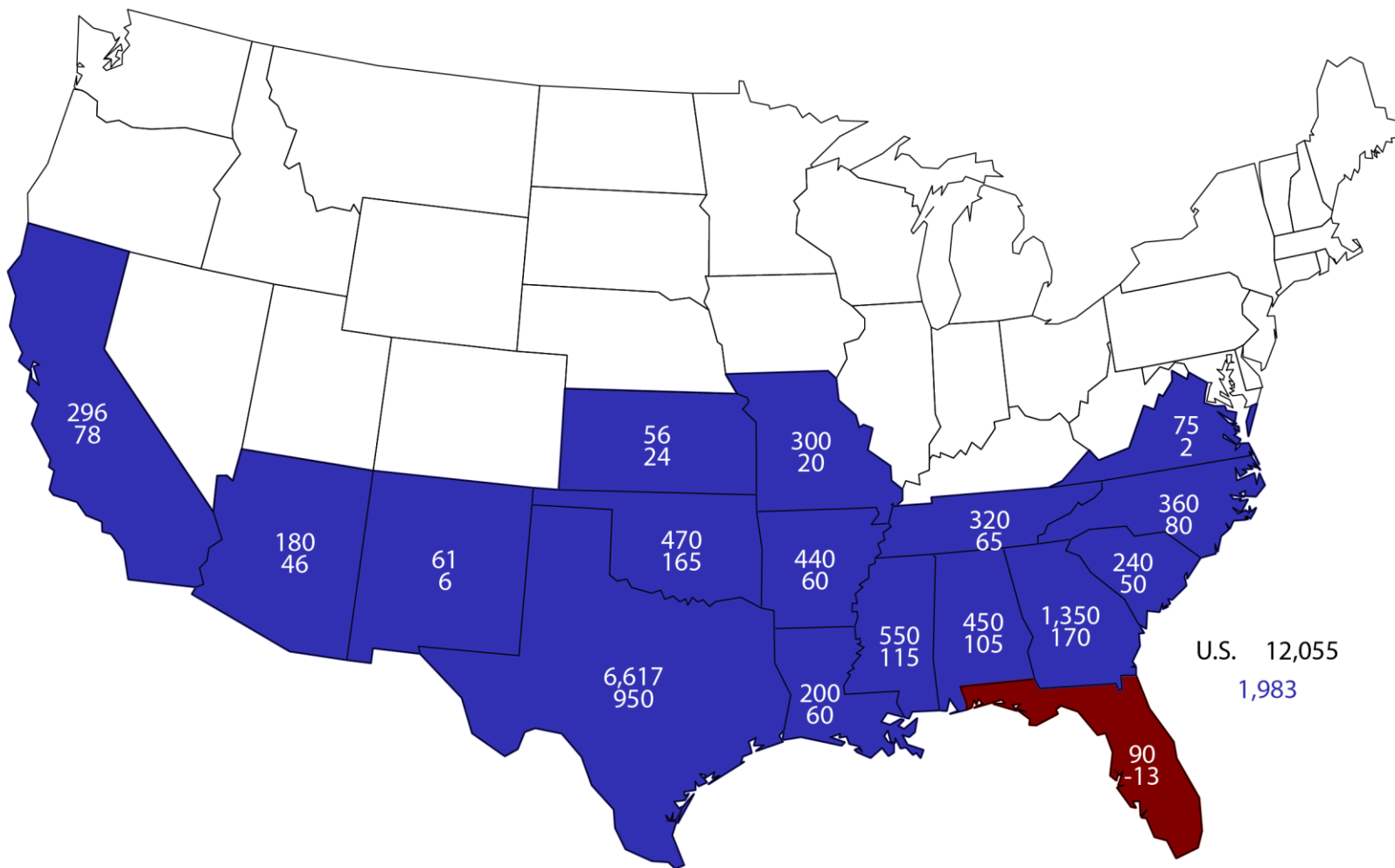
All Cotton Acres United States

Million Acres



2017 All Cotton Planted Area

Acres (000) and Change From Previous Year





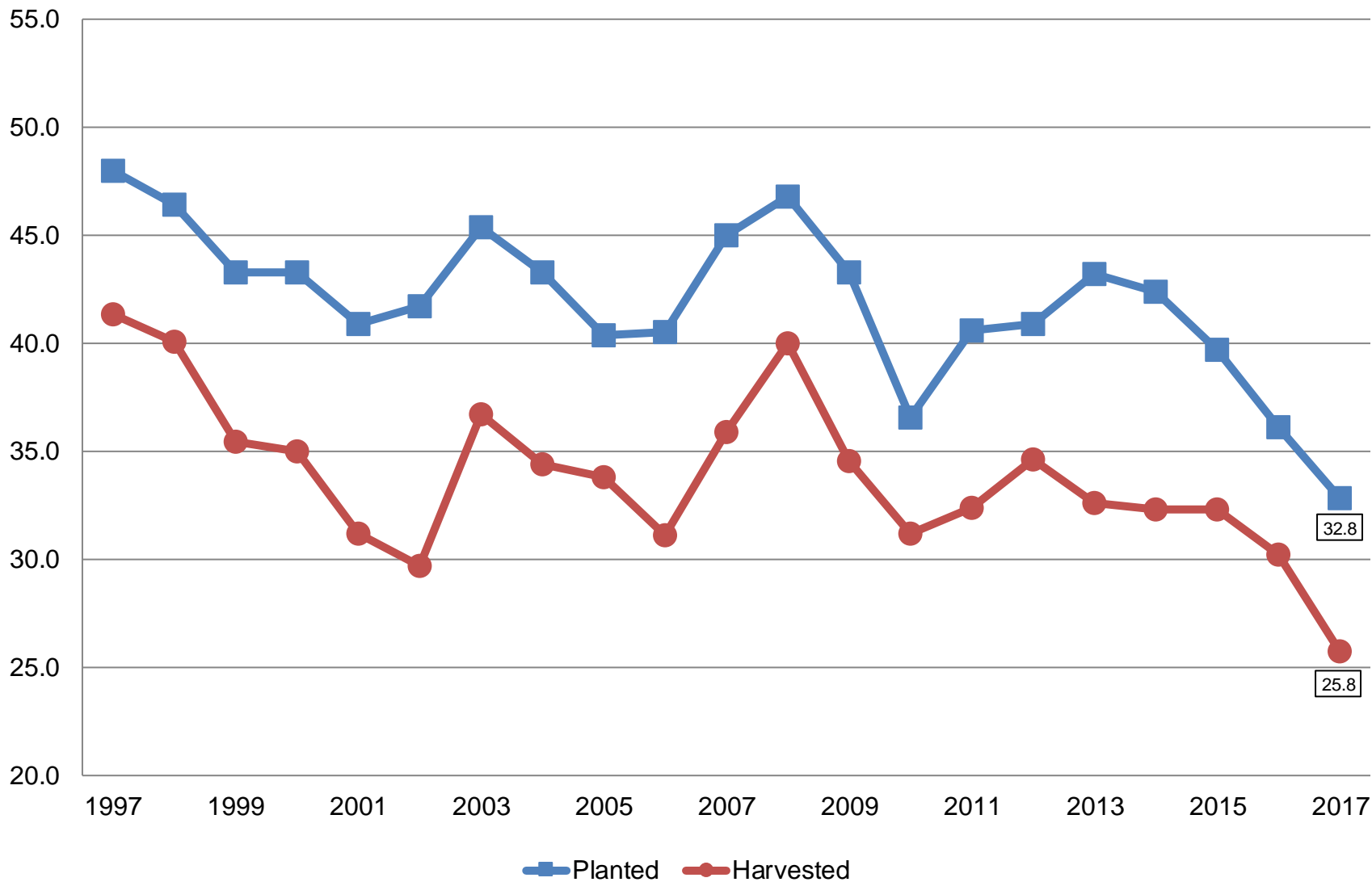
June 2017 Acreage

Crop	Unit	June 2017	% Change From Previous Estimate	% Change From Previous Season
Winter Wheat				
Planted	Mil Ac	32.8	+0.3	-9.1
Harvested	Mil Ac	25.8	+0.8	-14.8
Spring Wheat				
Planted	Mil Ac	10.9	-3.6	-6.1
Harvested	Mil Ac	10.5	NA	-7.1
Durum Wheat				
Planted	Mil Ac	1.92	-4.2	-20.4
Harvested	Mil Ac	1.86	NA	-21.4
All Wheat				
Planted	Mil Ac	45.7	-0.9	-9.0
Harvested	Mil Ac	38.1	NA	-13.2



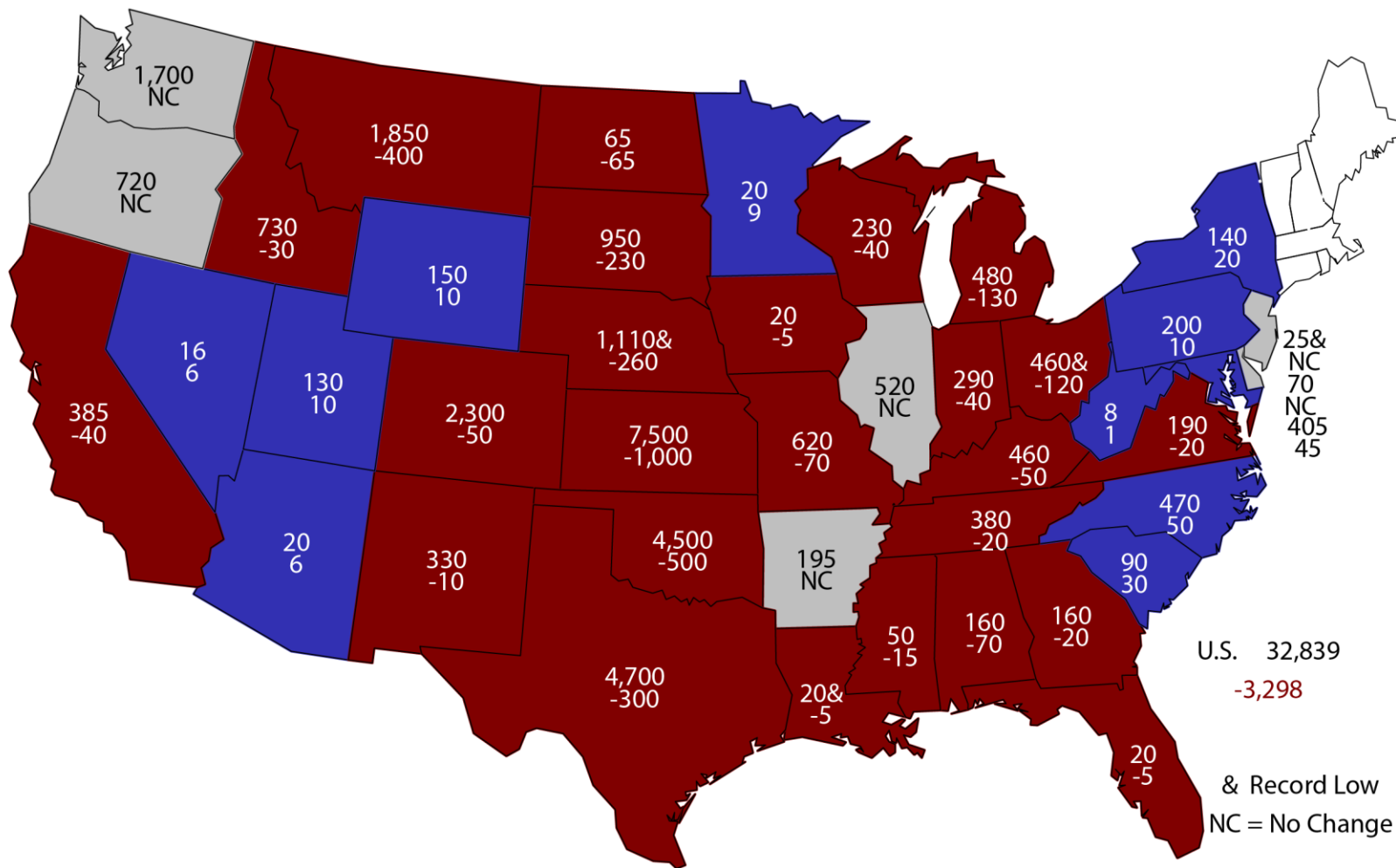
Winter Wheat Acres United States

Million Acres



2017 Winter Wheat Planted Area

(000) Acres and Change From Previous Year



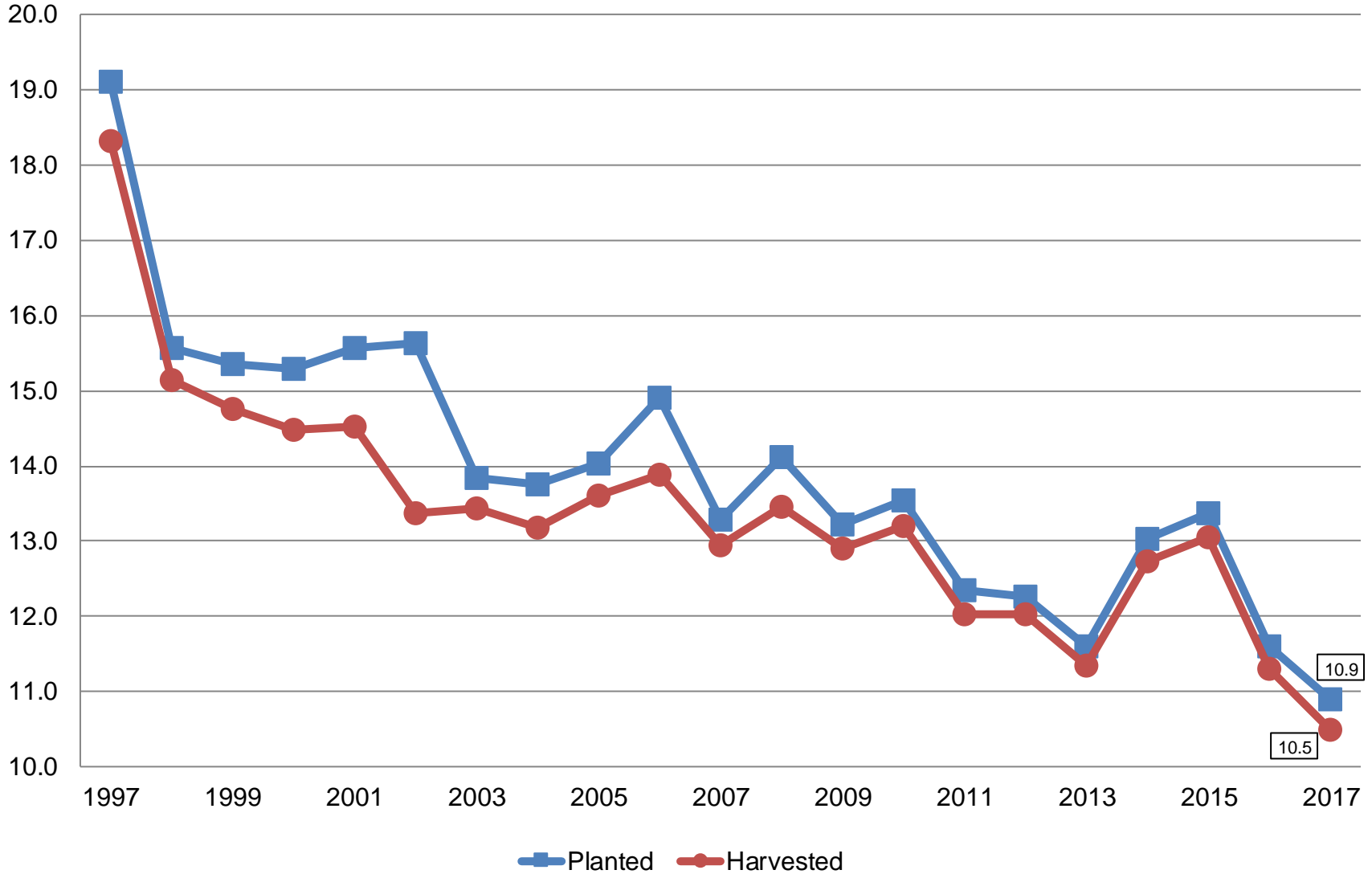
U.S. 32,839
-3,298

& Record Low
NC = No Change



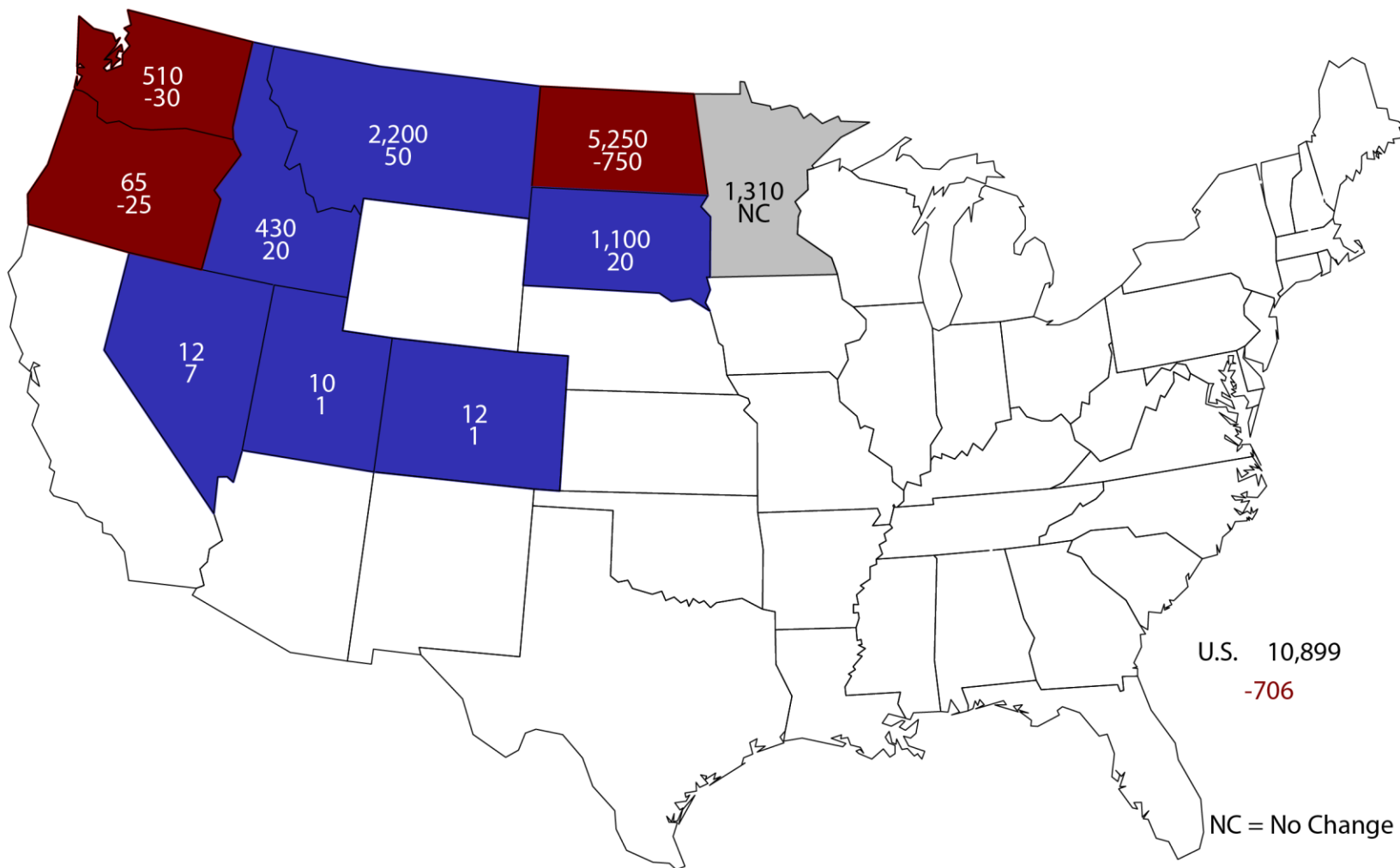
Other Spring Wheat Acres United States

Million Acres



2017 Other Spring Wheat Planted Area

(000) Acres and Change From Previous Year



U.S. 10,899
-706

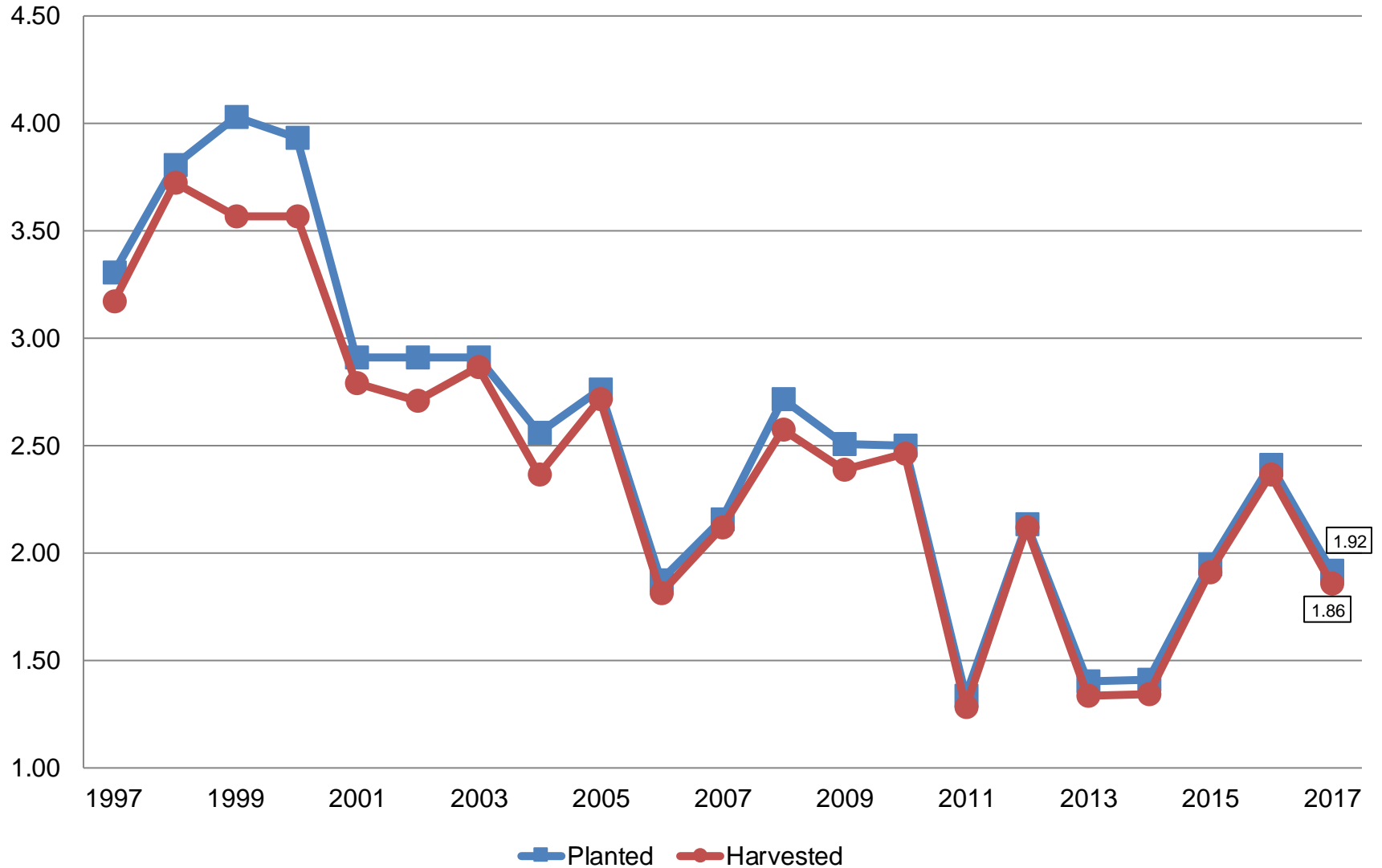
NC = No Change



Durum Wheat Acres

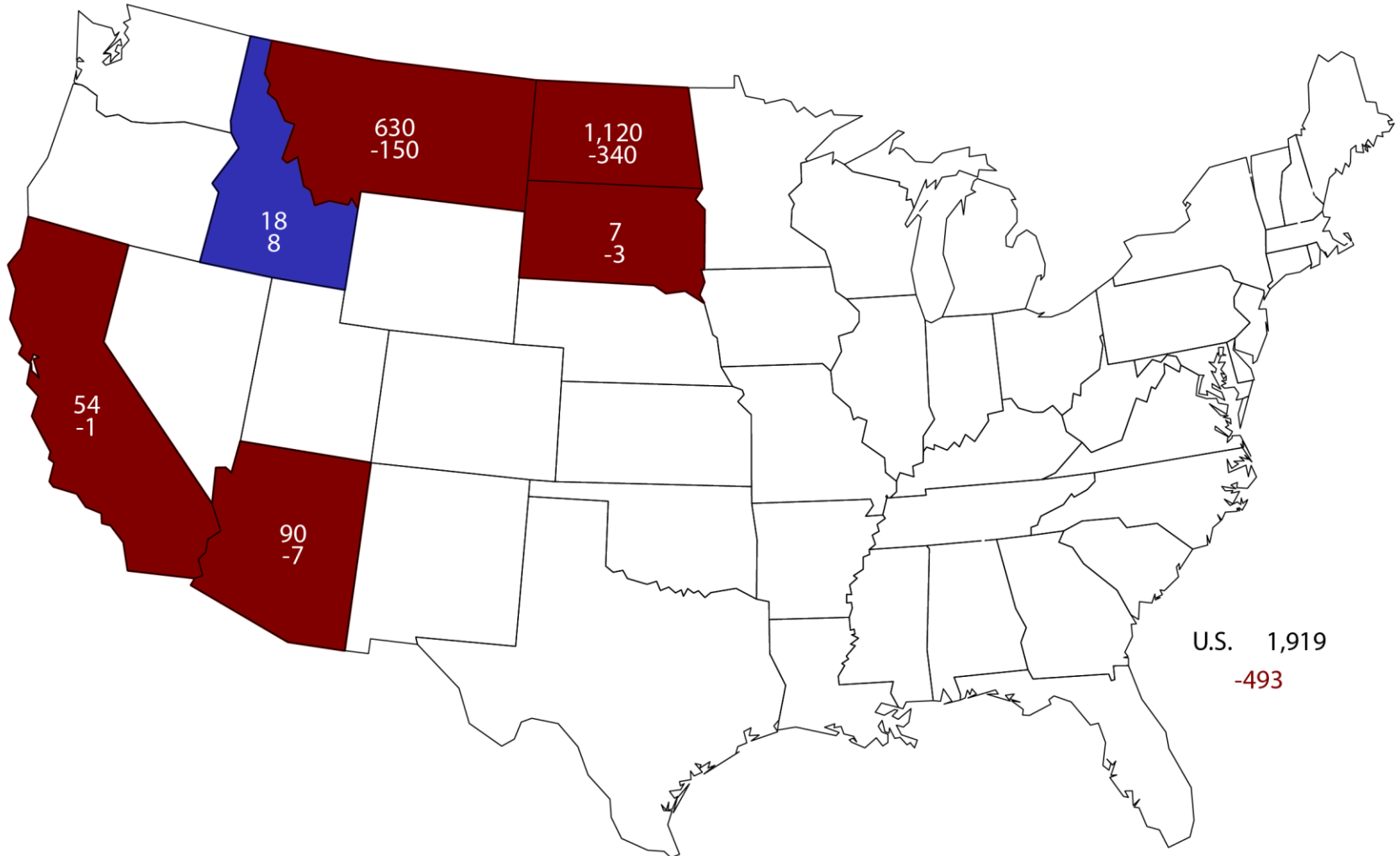
United States

Million Acres



2017 Durum Wheat Planted Area

(000) Acres and Change From Previous Year





June 2017 Acreage

Crop	Unit	June 2017	% Change From Previous Estimate	% Change From Previous Season
Planted Area				
Sorghum	Mil Ac	5.99	+4.0	-10.5
Oats	Mil Ac	2.54	-6.0	-10.3
Barley	Mil Ac	2.38	-6.8	-22.1
Harvested Area				
All Hay	Mil Ac	53.5	+1.3	+0.1
Alfalfa	Mil Ac	17.1	NA	+1.3
Other Hay	Mil Ac	36.4	NA	-0.5



June 2017 Acreage

Crop	Unit	June 2017	% Change From Previous Estimate	% Change From Previous Season
Planted Area				
Rice	Mil Ac	2.56	-2.4	-18.7
Peanuts	Mil Ac	1.82	+3.8	+8.8
Sugarbeets	Mil Ac	1.13	-0.3	-2.7
Dry Beans	Mil Ac	1.82	-2.3	+9.7
Potatoes, Fall	Thou Ac	908	NA	-1.4
Potatoes, Summer	Thou Ac	63.6	NA	+2.3
Sweet Potatoes	Thou Ac	151	-4.4	-9.9
Harvested Area				
Sugarcane	Thou Ac	872	NA	-3.4
Tobacco	Thou Ac	314	-1.4	-1.9



June 2017 Acreage

Crop	Unit	June 2017	% Change From Previous Estimate	% Change From Previous Season
Planted				
A. Winter Peas	Thou Ac	27.0	+3.8	-28.9
Dry Peas	Mil Ac	1.11	-2.7	-19.7
Lentils	Mil Ac	1.02	-3.8	+8.8



June 2017 Acreage

Crop	Unit	June 2017	% Change From Previous Estimate	% Change From Previous Season
Planted				
Sunflower	Mil Ac	1.27	-13.0	-20.8
Canola	Mil Ac	2.16	+12.1	+26.1
Flaxseed	Thou Ac	283	-9.6	-24.3
Safflower	Thou Ac	162	NA	+0.6
Mustard Seed	Thou Ac	76.0	NA	-26.3
Rye	Mil Ac	2.13	NA	+12.9
Proso Millet	Thou Ac	550	NA	+24.2
Rapeseed	Thou Ac	12.5	NA	+13.6

Biotech Varieties % of All Planted Acres

Crop	Herbicide Resistant Only		Insect Resistant (Bt) Only	
	2016	2017	2016	2017
Corn	13	12	3	3
Soybeans	94	94	-	-
Upland Cotton	9	11	4	5

Crop	Stacked Gene		All Biotech Varieties	
	2016	2017	2016	2017
Corn	76	77	92	92
Soybeans	-	-	94	94
Upland Cotton	80	80	93	96



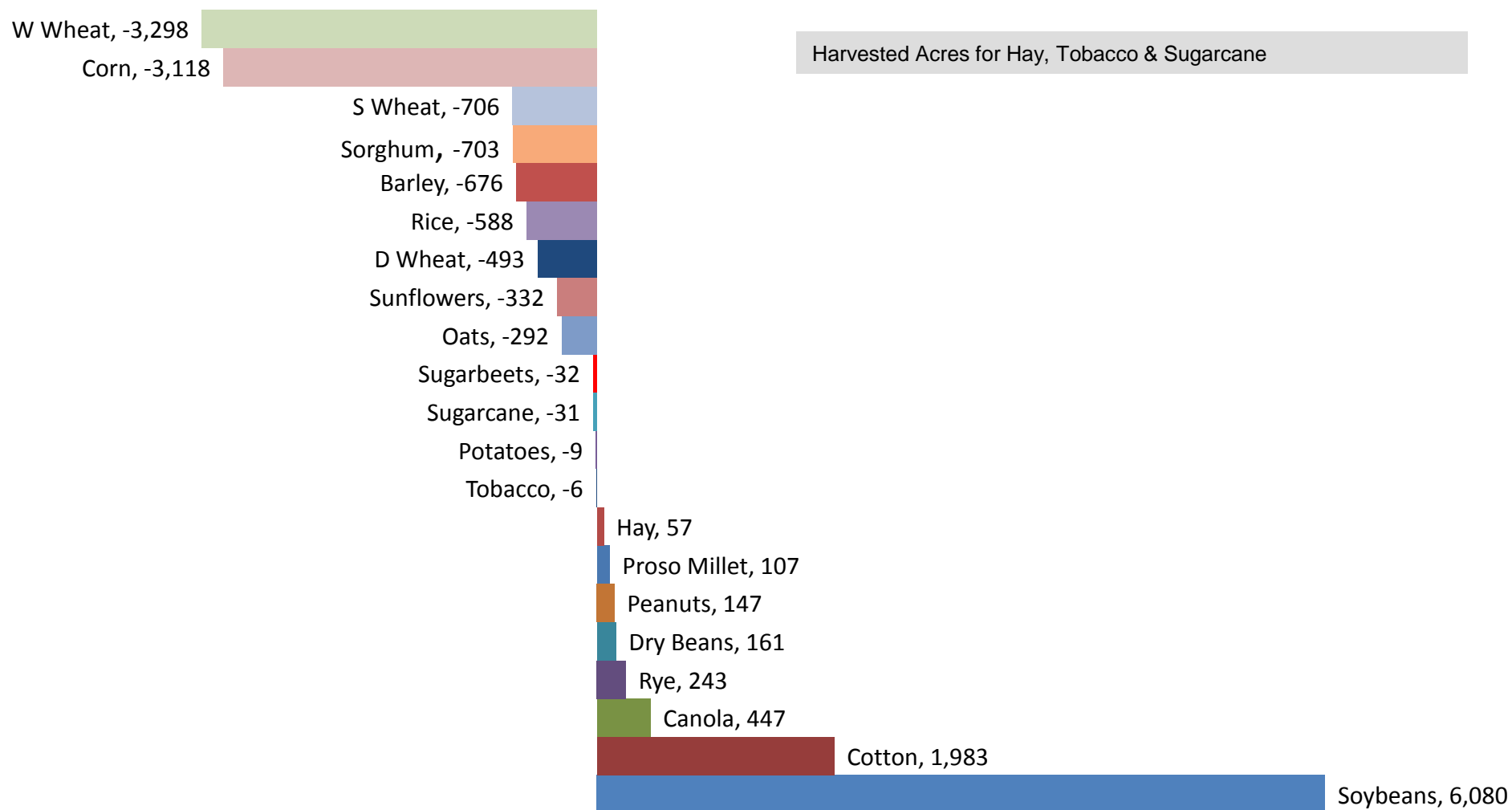
Percent of Acres Remaining To Be Planted

Crop	2015	2016	2017
Corn	1.7	1.4	2.0
Soybeans	15.5	12.4	10.9
Other Spring Wheat	0.6	1.1	0.7
Durum Wheat	3.6	6.6	2.6



Change in Planted Acres (000)

2017 Compared With 2016





June Grain Stocks

Crop	Unit	June 2017	% Change From Previous Estimate	% Change From Previous Year
Stocks				
Corn	Bil Bu	5.23	NA	+10.9
Soybeans	Bil Bu	0.963	NA	+10.5
Sorghum	Mil Bu	85.5	NA	-5.4
Rice	Mil Cwt	66.3	NA	+3.2



June Grain Stocks

Crop	Unit	June 2017	% Change From Previous Estimate	% Change From Previous Year
Stocks				
All Wheat	Bil Bu	1.18	NA	+21.4
Barley	Mil Bu	108	NA	+5.8
Oats	Mil Bu	52.5	NA	-7.6

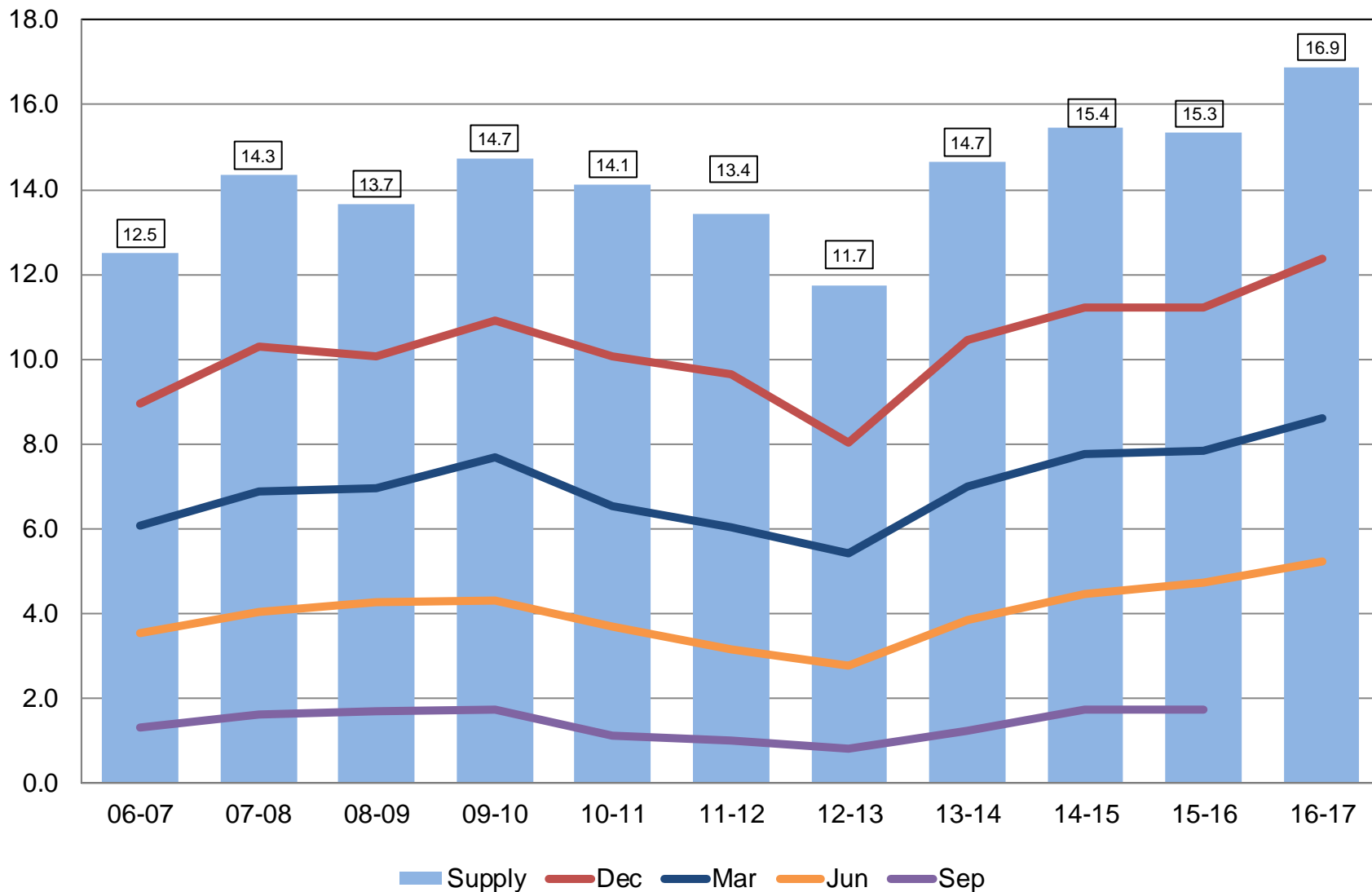


June Grain Stocks

Crop	Unit	June 2017	% Change From Previous Estimate	% Change From Previous Season
Stocks				
Dry Peas	Mil Cwt	4.32	NA	+16.5
Lentils	Mil Cwt	1.21	NA	+148.8
A. Winter Peas	Thou Cwt	(D)	NA	(D)
Chickpeas	Thou Cwt	424	NA	-31.3
Small	Thou Cwt	133	NA	+33.0
Large	Thou Cwt	291	NA	-43.7

Corn Stocks United States

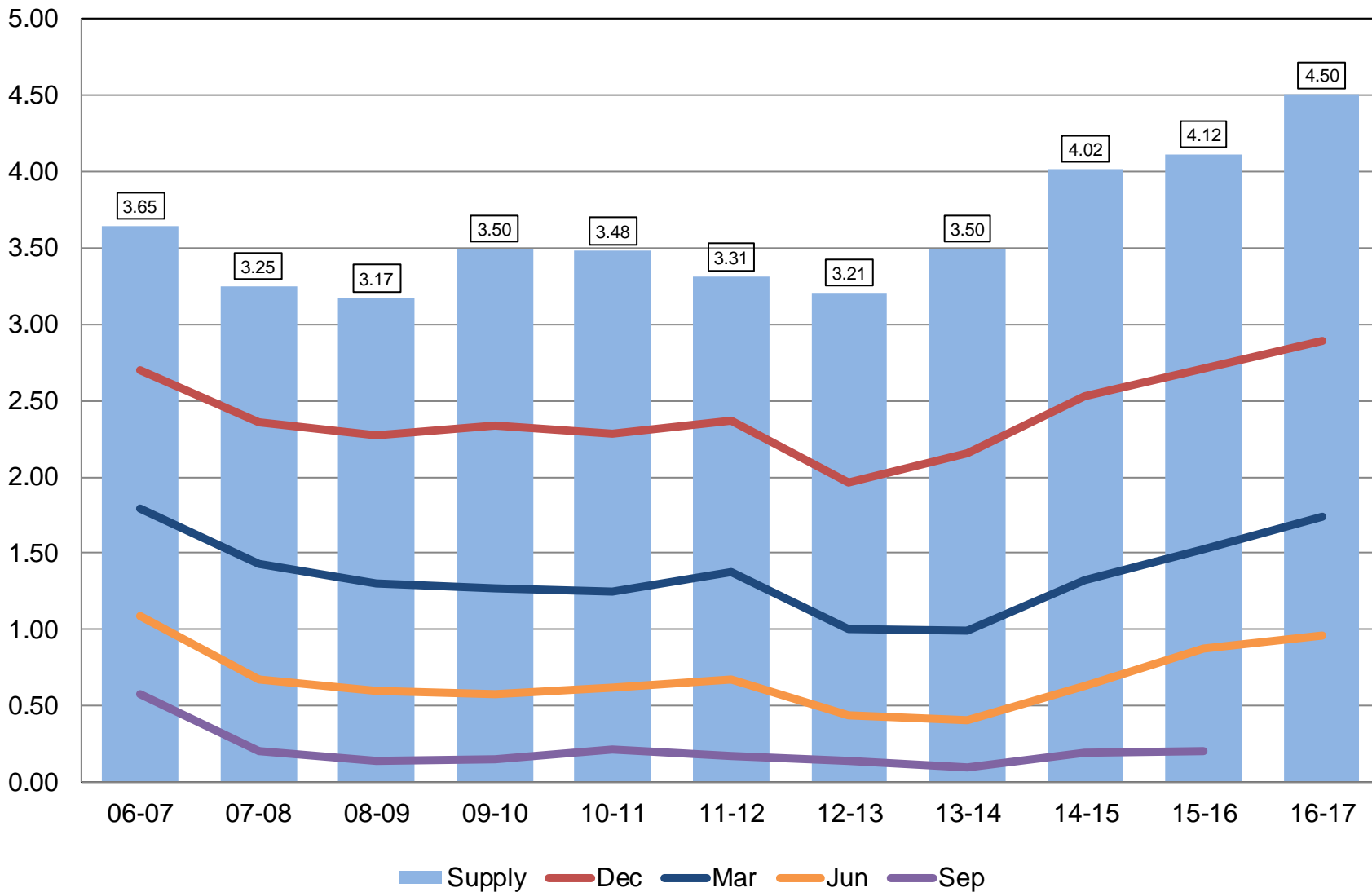
Billion Bushels





Soybean Stocks United States

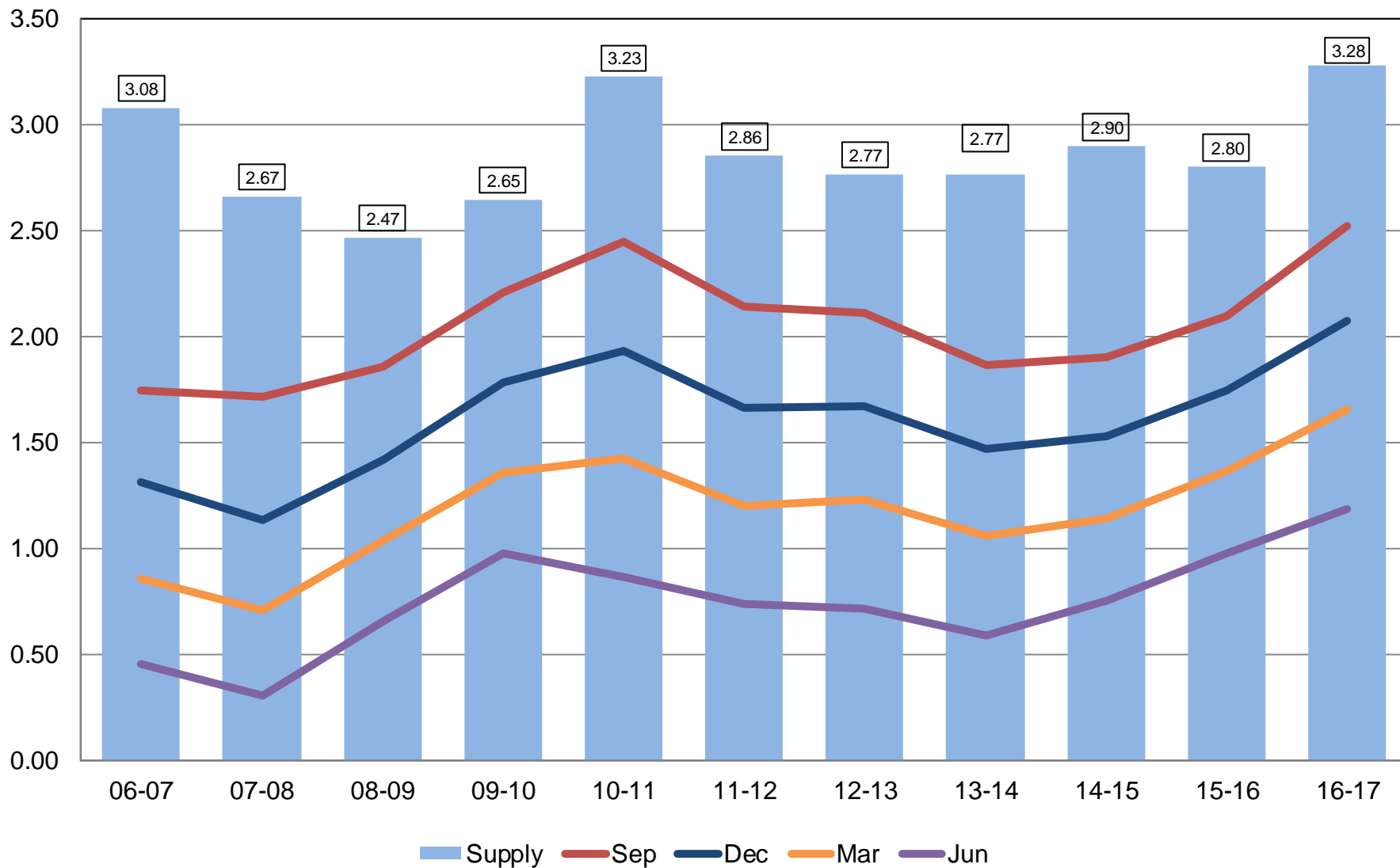
Billion Bushels





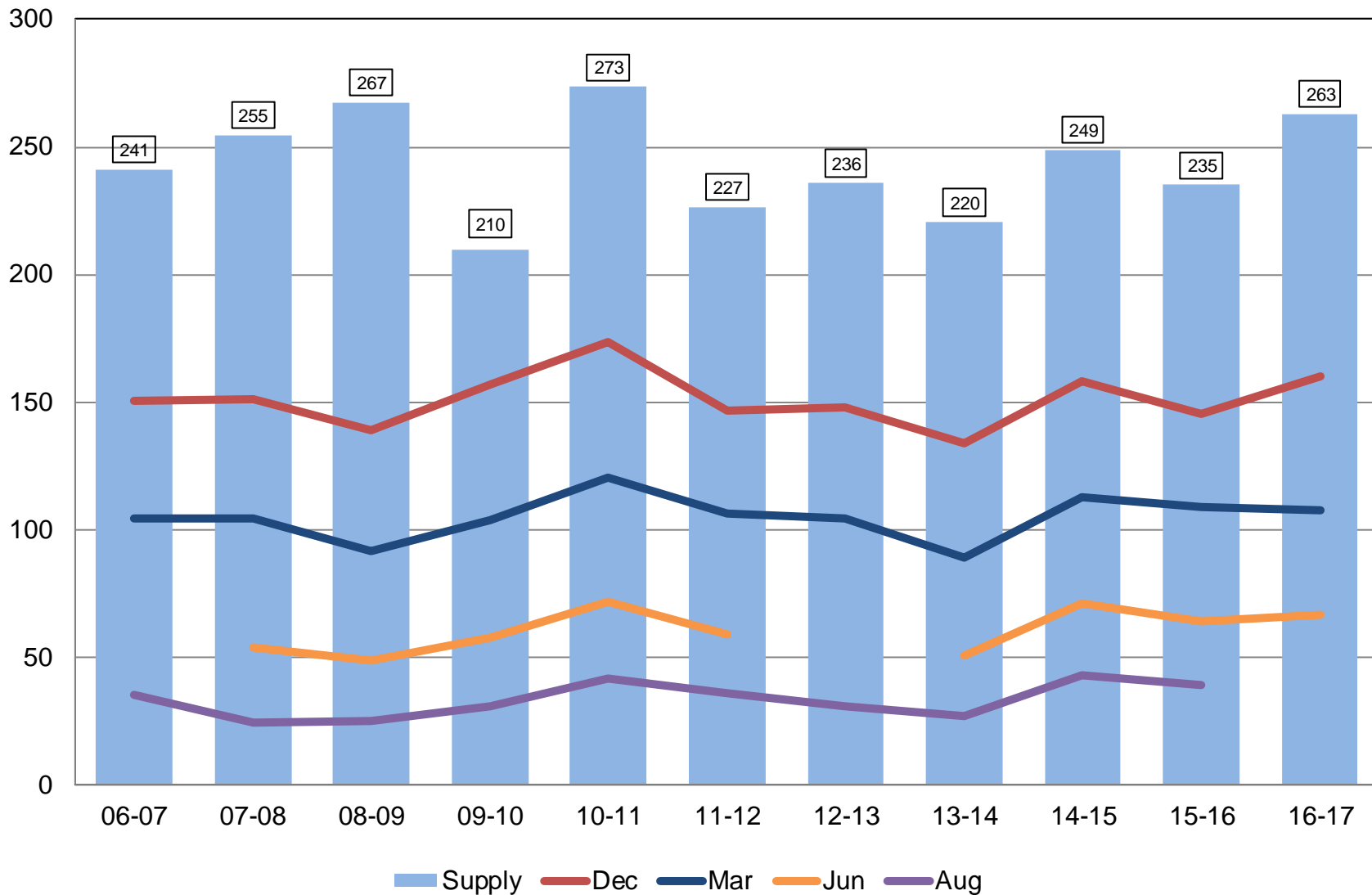
All Wheat Stocks United States

Billion Bushels



Rough Rice Stocks United States

Million Hundredweight





Upcoming Reports

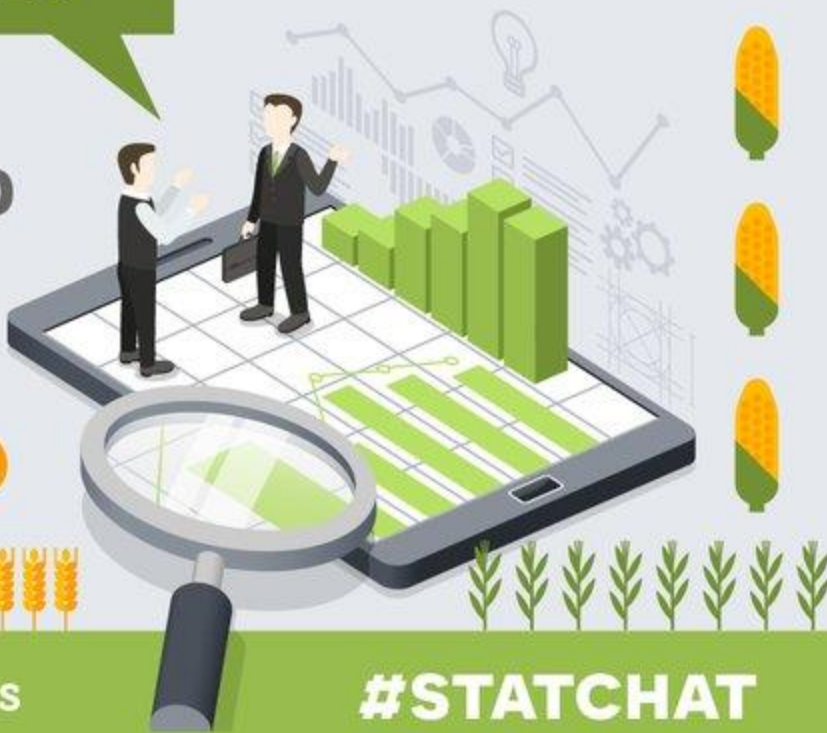
Release Date	Report Title
July 5	CAIR: Cotton System CAIR: Fats & Oils CAIR: Grain Crushings
July 12	Crop Production
July 21	Cattle and Cattle on Feed
July 31	Agricultural Prices



STAT CHAT SERIES

Join @usda_nass
using **#StatChat** to
ask NASS's Lance
Honig ask about
the June 30
Acreage Report.

**FRIDAY,
JUNE 30
1PM ET**



@usda_nass

#STATCHAT



United States Department of Agriculture
National Agricultural Statistics Service

All Reports Available At
www.nass.usda.gov

For Questions
202-720-2127
800-727-9540
nass@nass.usda.gov