



United States Department of Agriculture
National Agricultural Statistics Service

May Crop Production
Executive Summary

Lance Honig, Chief
Crops Branch



Contents

Field Crops	Fruit & Nuts
Winter Wheat	Citrus
Hay Stocks	Peaches (CA)
Cotton	Almonds (CA)
Spring Potatoes	



Survey Overview

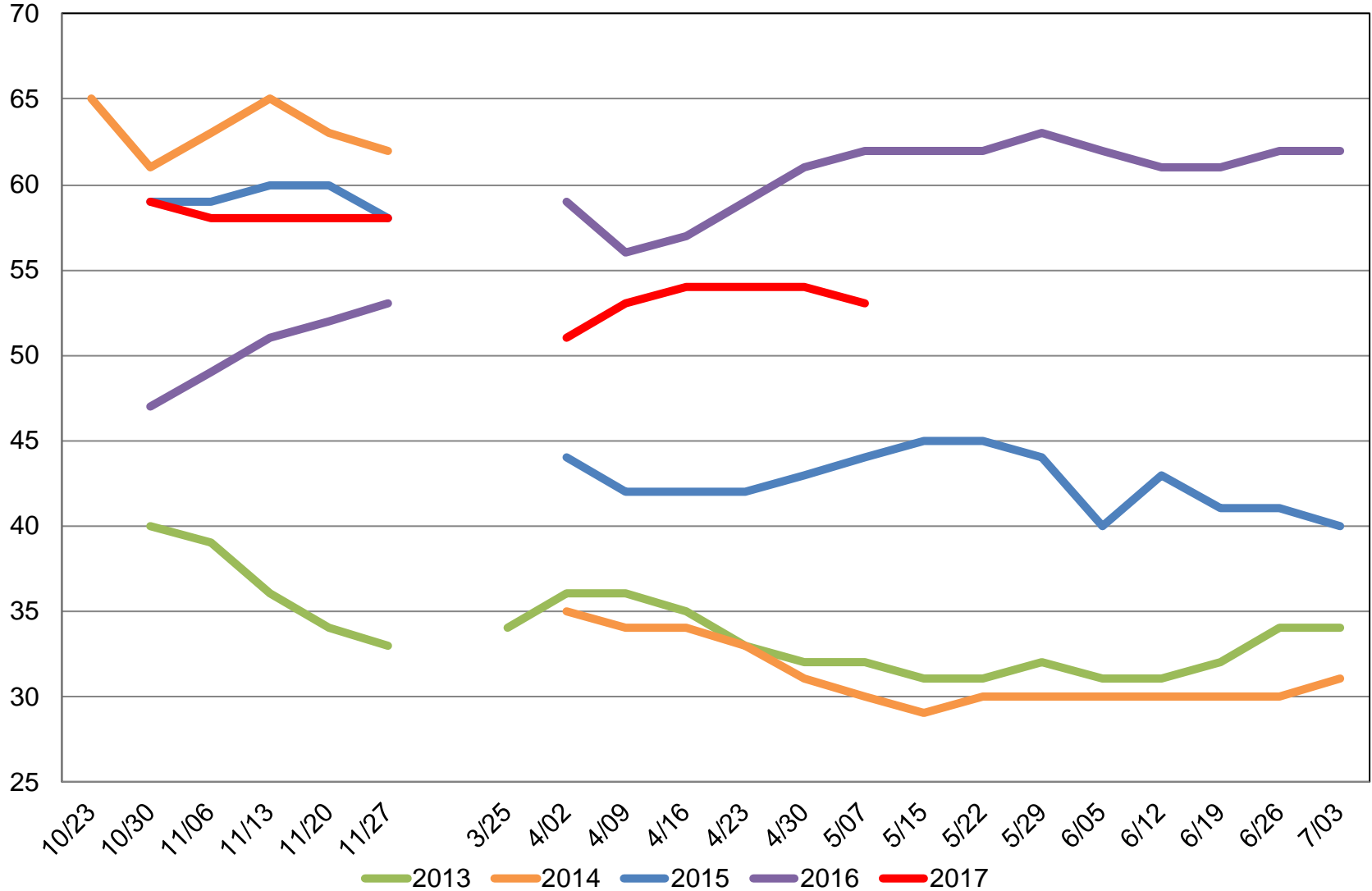
	Ag Yield	Objective Yield
Survey Type	Farmer Reported	Field Measurement
Crops Included	Winter and Durum Wheat, Hay Stocks	Winter Wheat
States	All except AK and HI	KS, OK, TX
Sample Size	11,322	355
Collection Period	Apr 29-May 4	Apr 24-May 1



U.S. Winter Wheat Condition

Percent Rated Good to Excellent

Percent





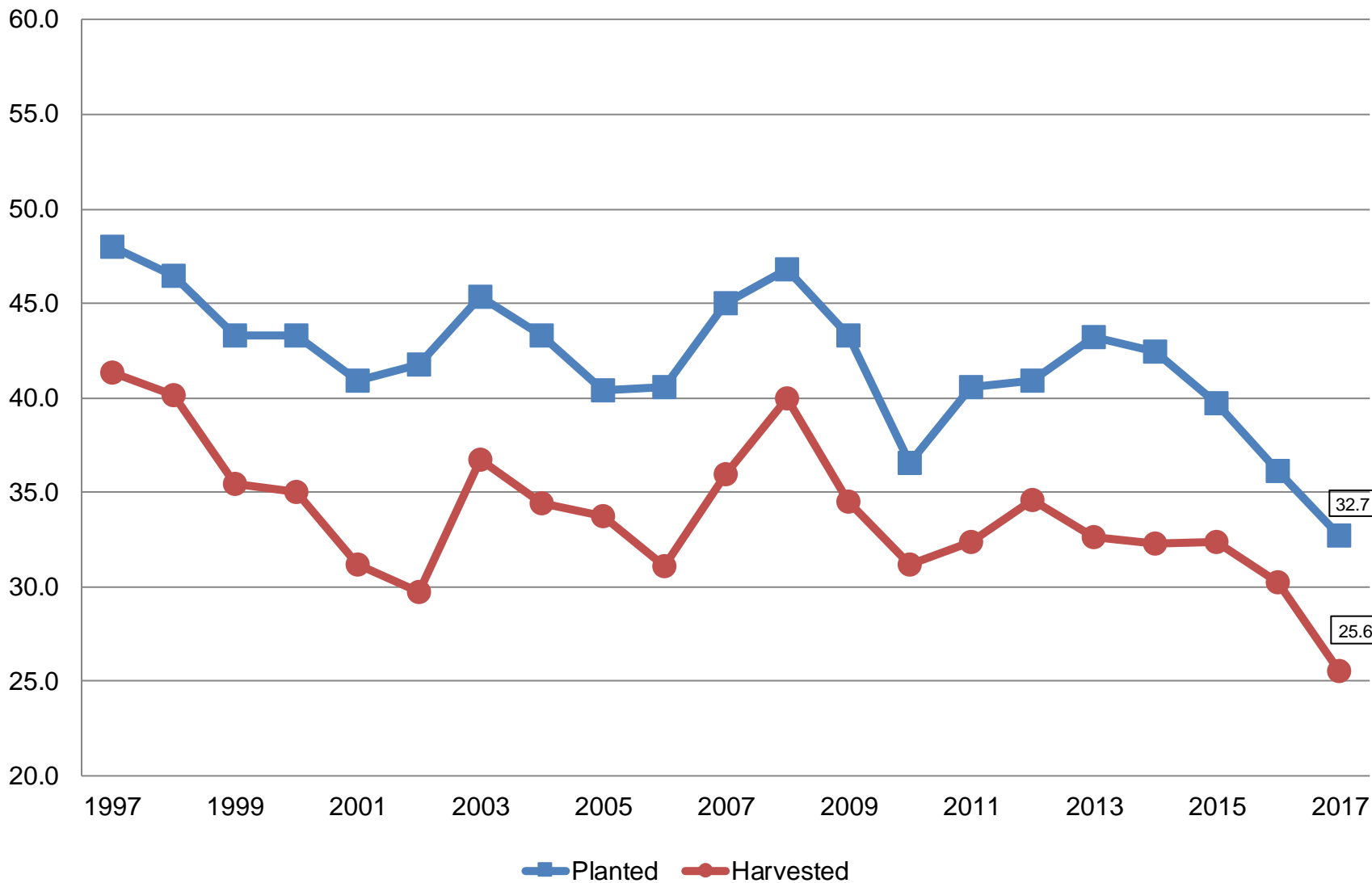
May 2017 Crop Production

Crop	Unit	May 2017	% Change From Previous Forecast	% Change From Previous Season
Wheat, Winter				
Harvested	Mil Ac	25.6	NA	-15.4
Yield	Bu/Ac	48.8	NA	-11.8
Production	Bil Bu	1.25	NA	-25.4



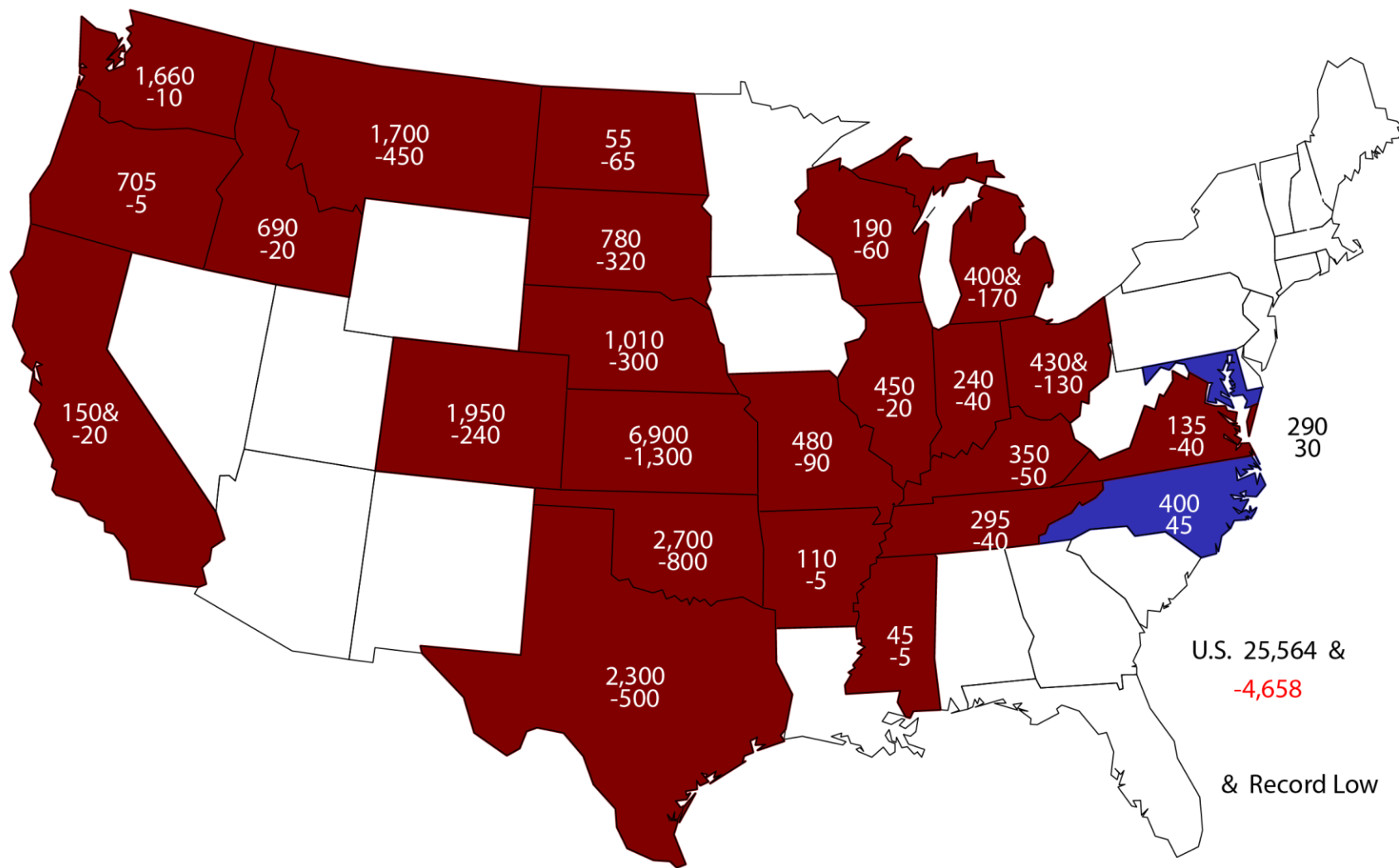
Winter Wheat Acres United States

Million Acres



2017 Winter Wheat Harvested Area

(000) Acres and Change From Previous Year

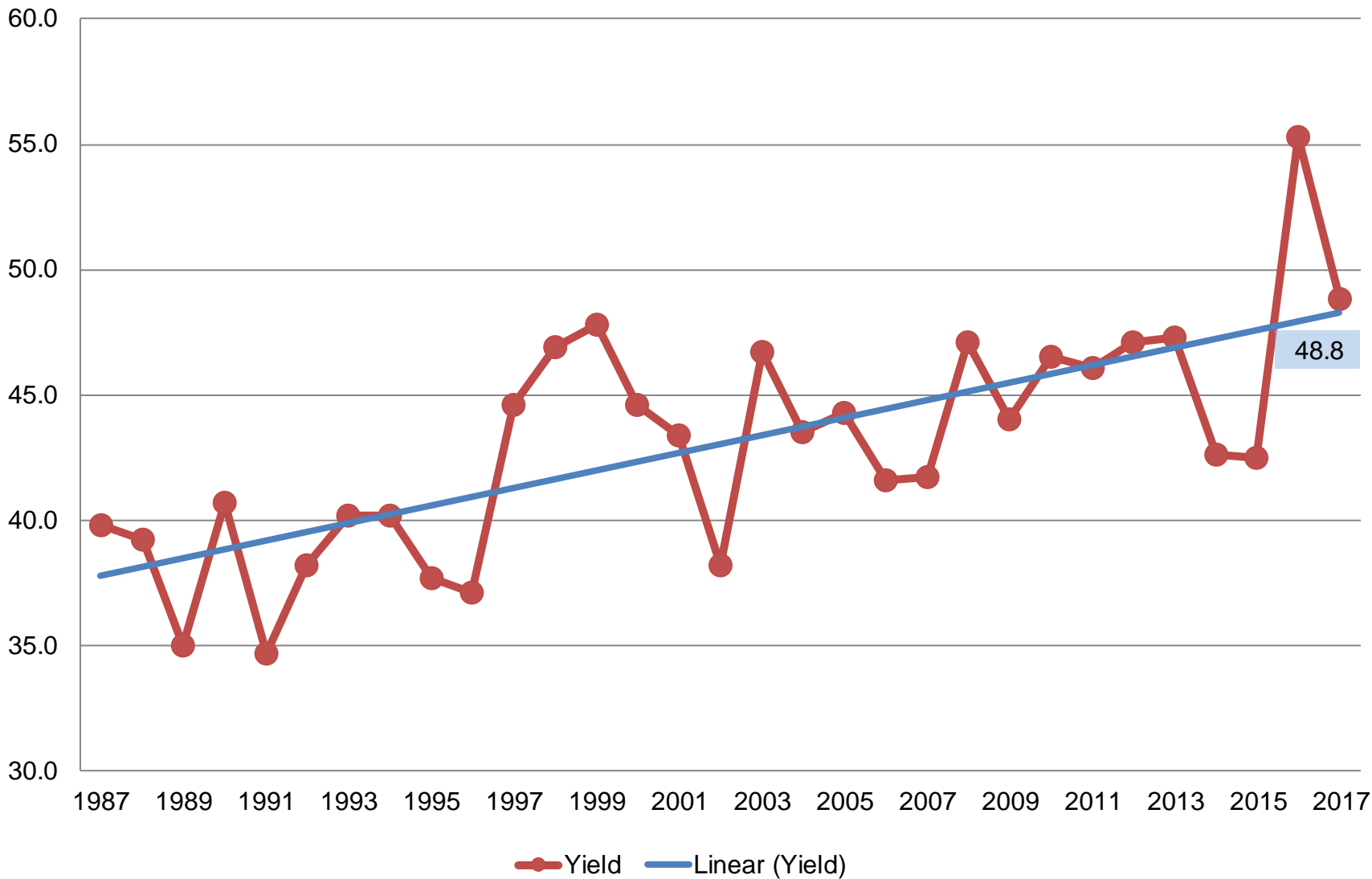


U.S. 25,564 &
-4,658

& Record Low

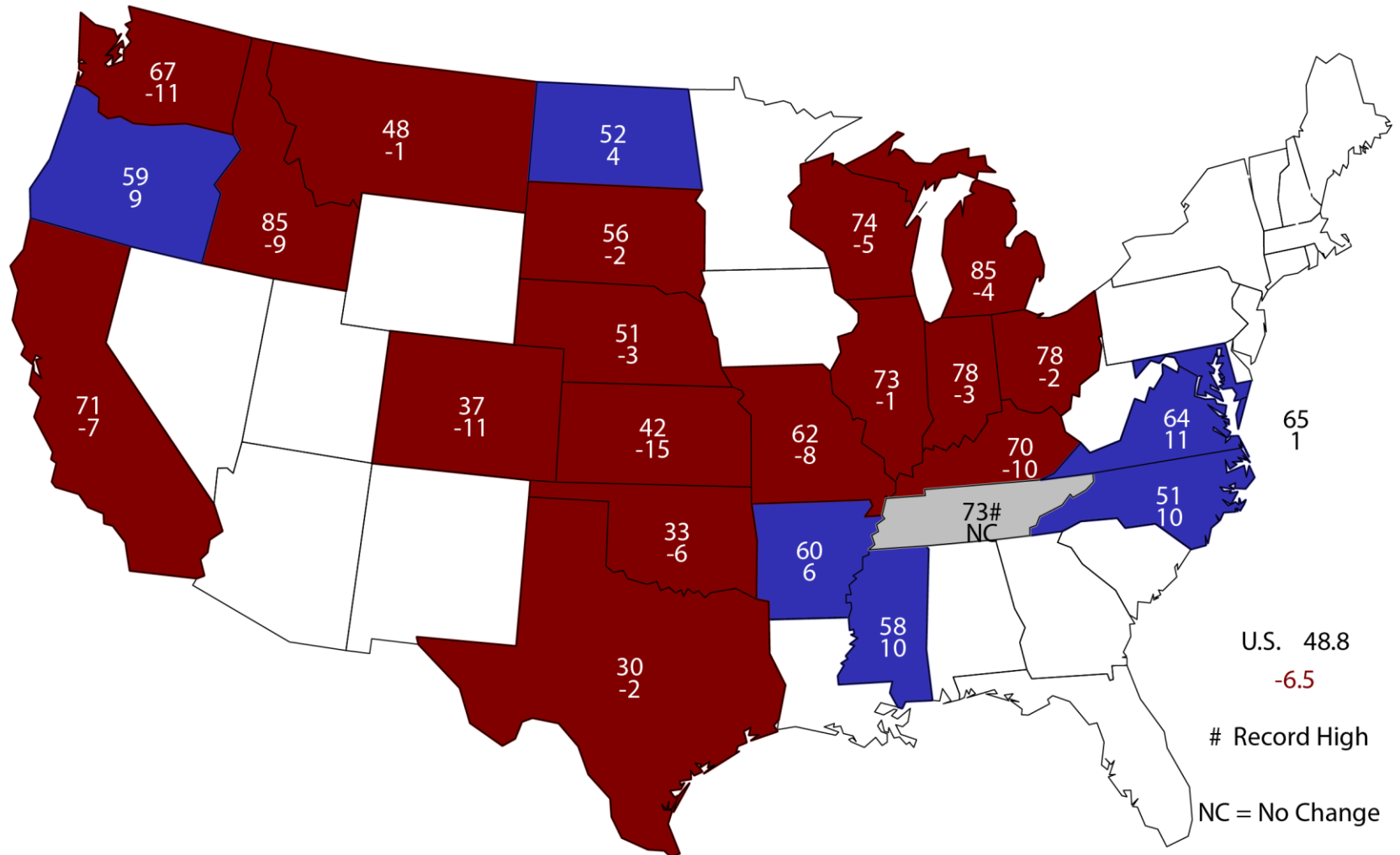
Winter Wheat Yield United States

Bushels per Acre



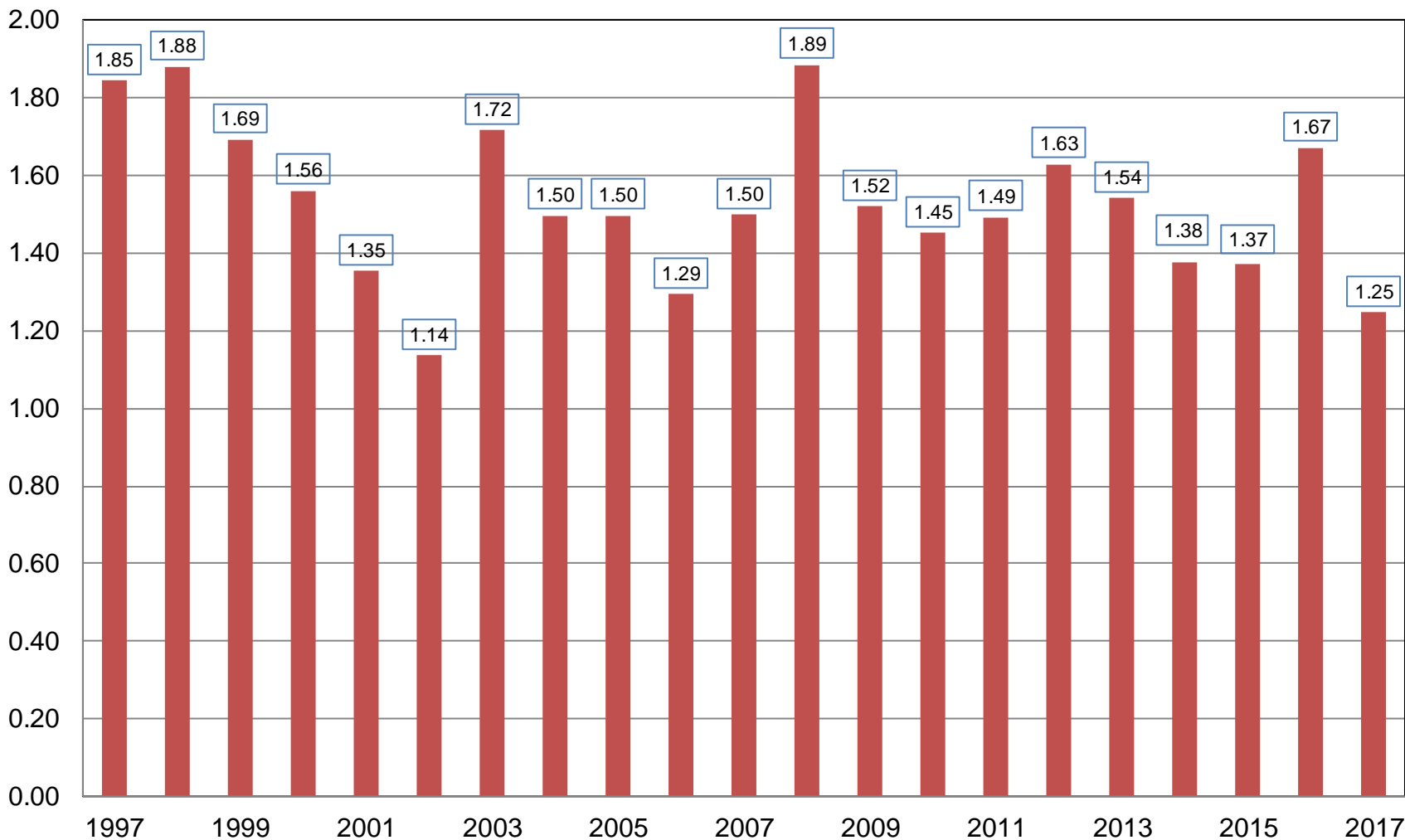
May 1, 2017 Winter Wheat Yield

Bushels and Change From Previous Year



Winter Wheat Production United States

Billion Bushels



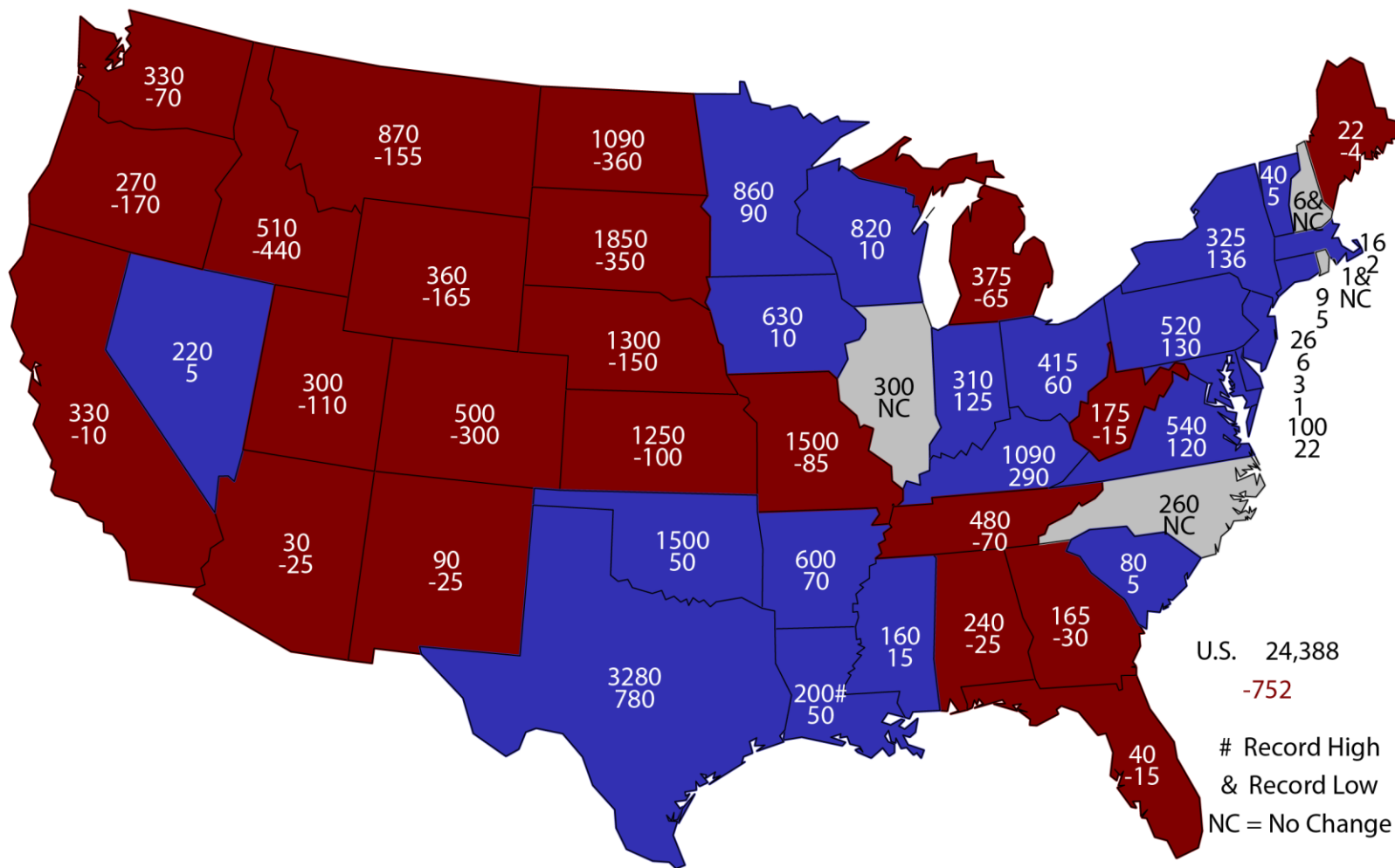


May 2017 Crop Production

Crop	Unit	May 2017	% Change From Previous Estimate	% Change From Previous Season
All Hay				
Stocks	Mil Tons	24.4	NA	-3.0

May 1, 2017 Hay Stocks

(000) Tons and Change From Previous Year



U.S. 24,388
 -752
 # Record High
 & Record Low
 NC = No Change



May 2017 Crop Production

Crop	Unit	May 2017	% Change From Previous Forecast	% Change From Previous Season
Production				
Oranges	Mil Tons	5.16	+0.9	-15.3
Grapefruit	Thou Tons	672	-1.9	-16.3
Tangerines & Mandarins	Thou Tons	957	-0.1	+0.8



May 2017 Crop Production

Crop	Unit	May 2017	% Change From Previous Forecast	% Change From Previous Season
Production				
Spring Potatoes	Mil Cwt	17.7	NA	+16.9
Almonds (CA)	Bil Lbs	2.20	NA	+2.8
Peaches (CA)	Thou Tons	625	NA	+7.8

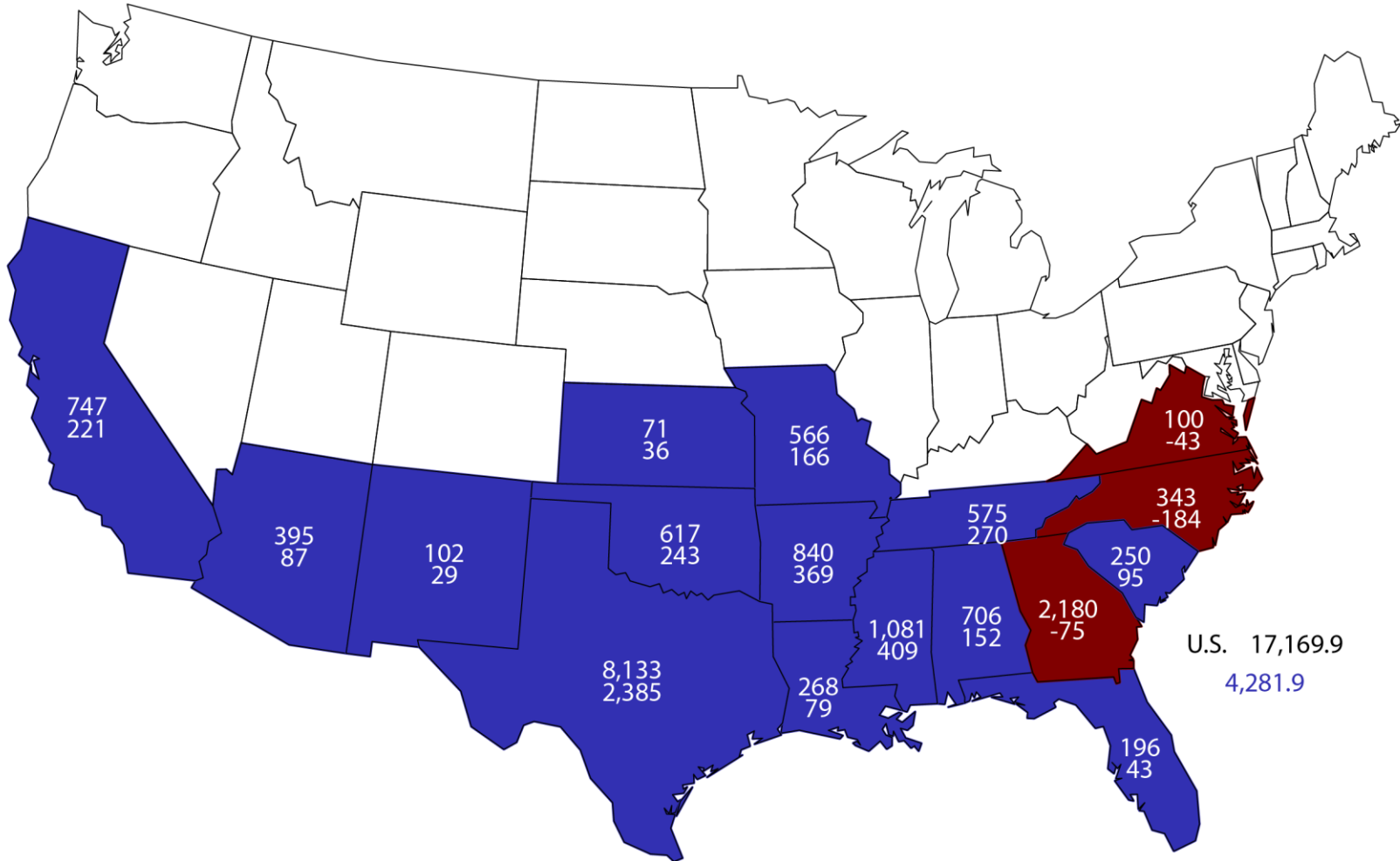


May 2017 Crop Production

Crop	Unit	2016	% Change From Previous Forecast	% Change From Previous Season
All Cotton				
Planted	Mil Ac	10.1	-<0.1	+17.4
Harvested	Mil Ac	9.51	-0.1	+17.7
Yield	Lb/Ac	867	+1.4	+13.2
Production	Mil Bls	17.2	+1.2	+33.2
Cottonseed				
Production	Mil Tons	5.37	-0.9	+32.8

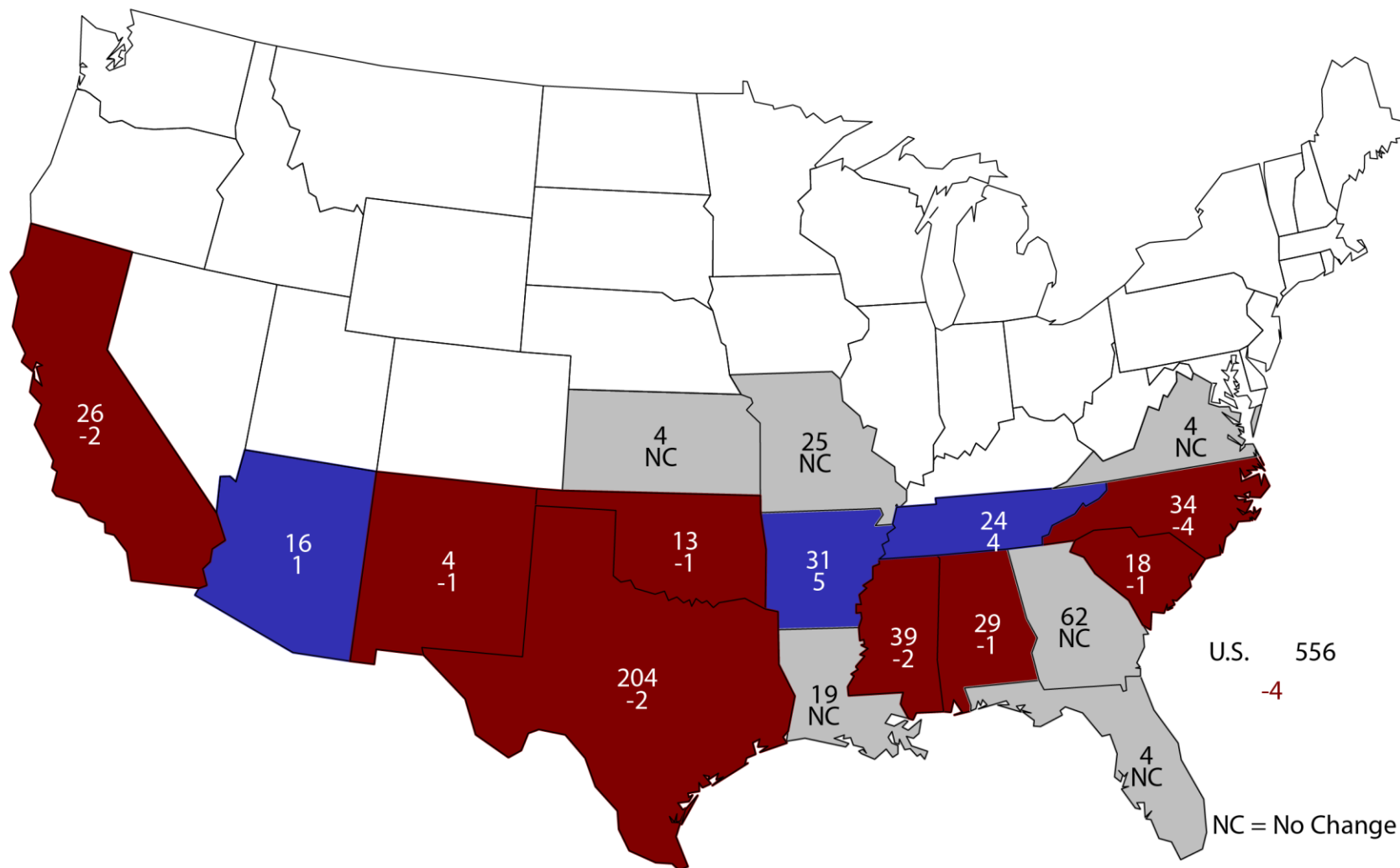
2016 All Cotton Production

Bales (000) and Change From Previous Year



2016 Active Cotton Gins

Number and Change From Previous Year



NC = No Change



Upcoming Reports

Release Date	Report Title
May 10	Cotton County Estimates
May 26	Cattle on Feed
May 31	Agricultural Prices
June 1	CAIR: Cotton CAIR: Fats & Oil CAIR: Grain Crushings
June 9	Crop Production
June 29	Hogs and Pigs
June 30	Acreage Grain Stocks Rice Stocks

STAT CHAT SERIES

Join @usda_nass using #StatChat to ask about crop production and the winter wheat forecast.

@usda_nass

#STATCHAT



**WED
MAY 10
1PM ET**





United States Department of Agriculture
National Agricultural Statistics Service

All Reports Available At
www.nass.usda.gov

For Questions
202-720-2127
800-727-9540
nass@nass.usda.gov