



United States Department of Agriculture  
**National Agricultural Statistics Service**

---

---

**August Crop Production**  
Executive Summary

Lance Honig, Chief  
Crops Branch



# Contents

Field Crops	Fruit and Nuts	Specialty Crops
Corn	Peaches	Dry Beans
Soybeans	Apples	Tobacco
Cotton	Pears	Sugarbeets
Wheat	Grapes	Sugarcane
Oats		Hops
Barley		Summer Potatoes
Sorghum		
Alfalfa & Other Hay		
Rice		
Peanuts		



# Survey Overview

	Ag Yield	Objective Yield
Survey Type	Farmer Reported	Field Measurement
Crops Included	Field Crops	Corn, Soybeans, Cotton, and Winter Wheat
Sample Size	22,144	4,544
Collection Period	July 29 – Aug 8	July 25 – Aug 1



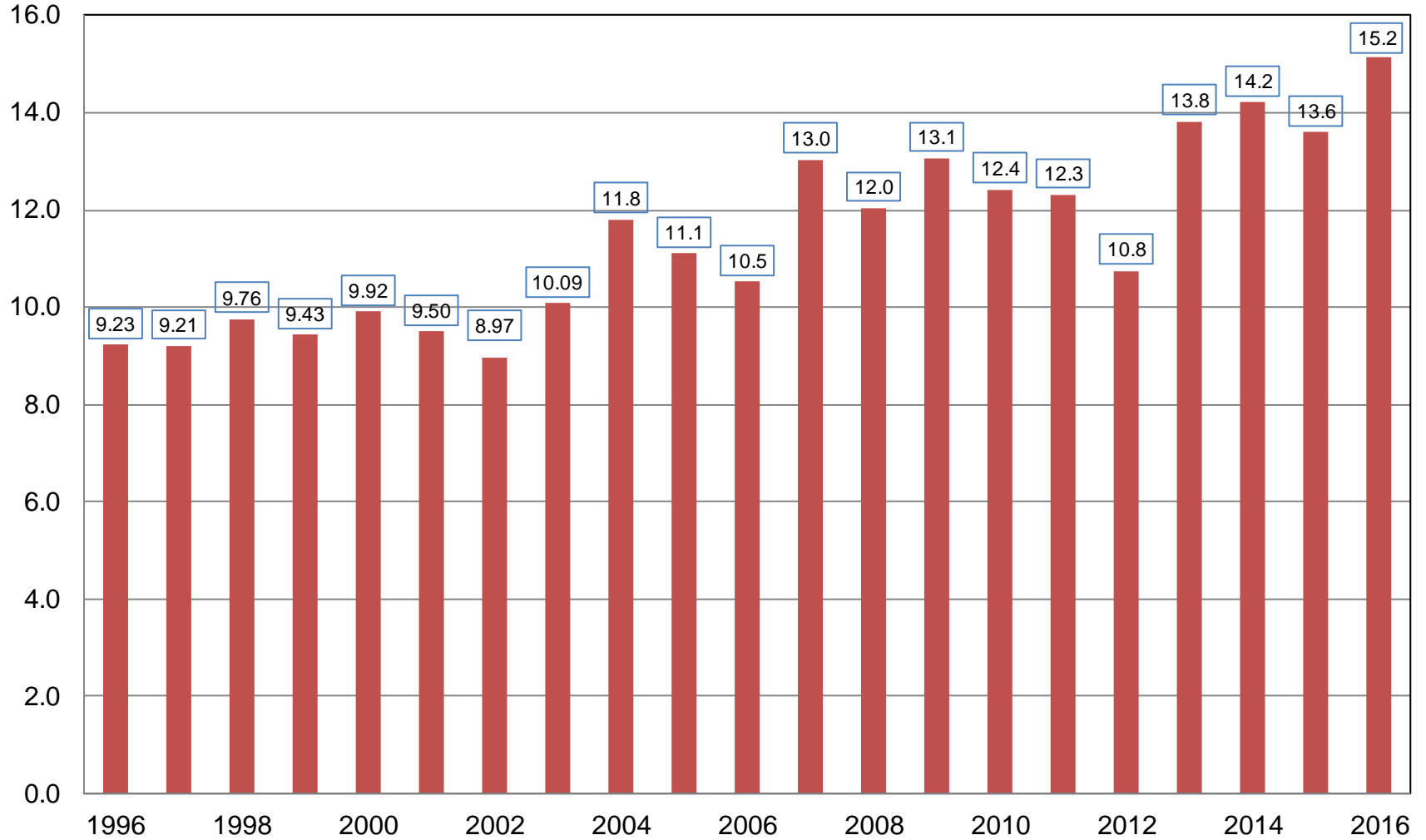
# August 2016 Crop Production

Crop	Unit	August 2016	% Change From Previous Estimate	% Change From Previous Season
Corn				
Planted	Mil Ac	94.1	NC	+7.0
Harvested	Mil Ac	86.6	NC	+7.2
Yield	Bu/Ac	175.1	NA	+4.0
Production	Bil Bu	15.2	NA	+11.4



# Corn for Grain Production United States

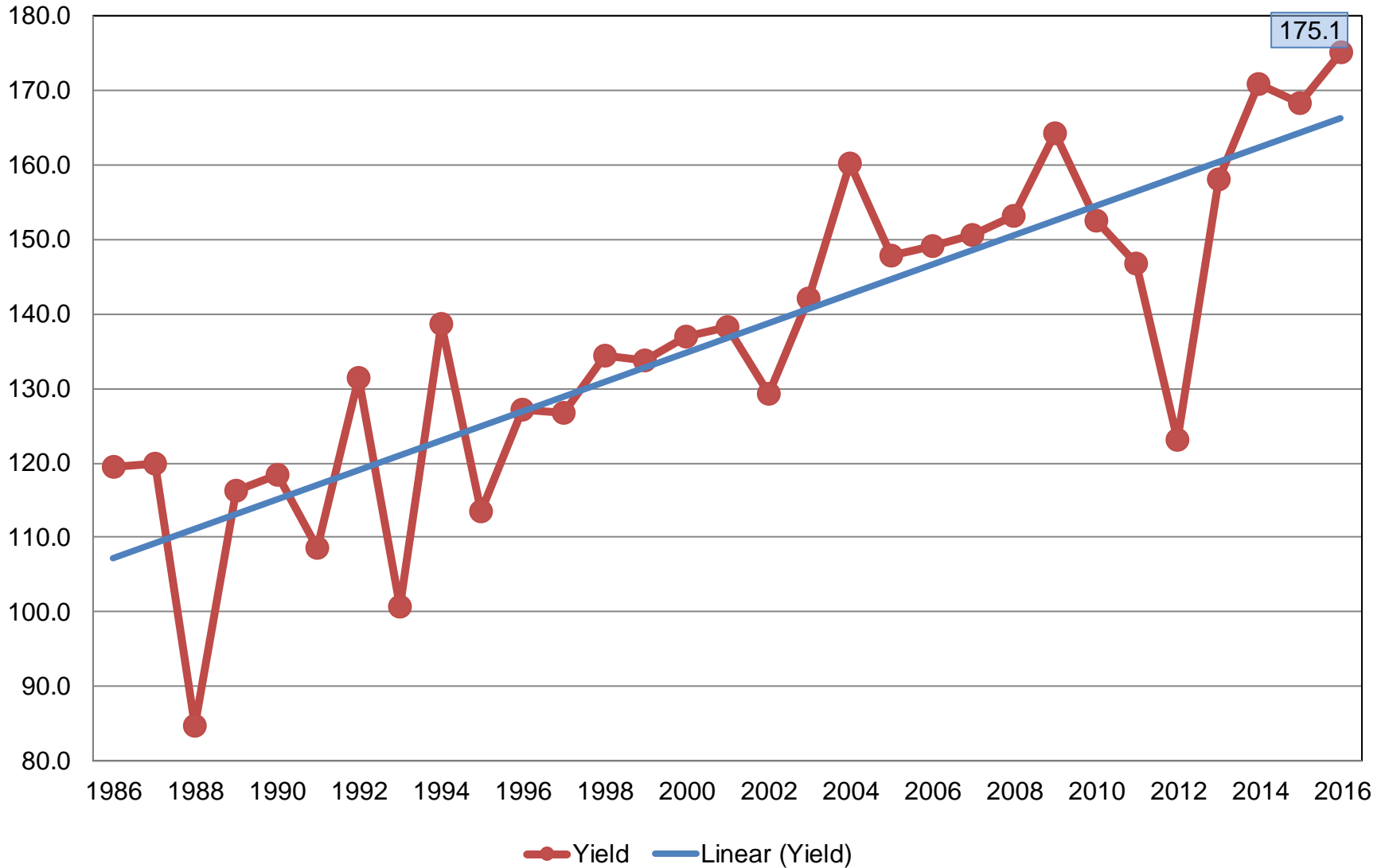
Billion Bushels



# Corn for Grain Yield

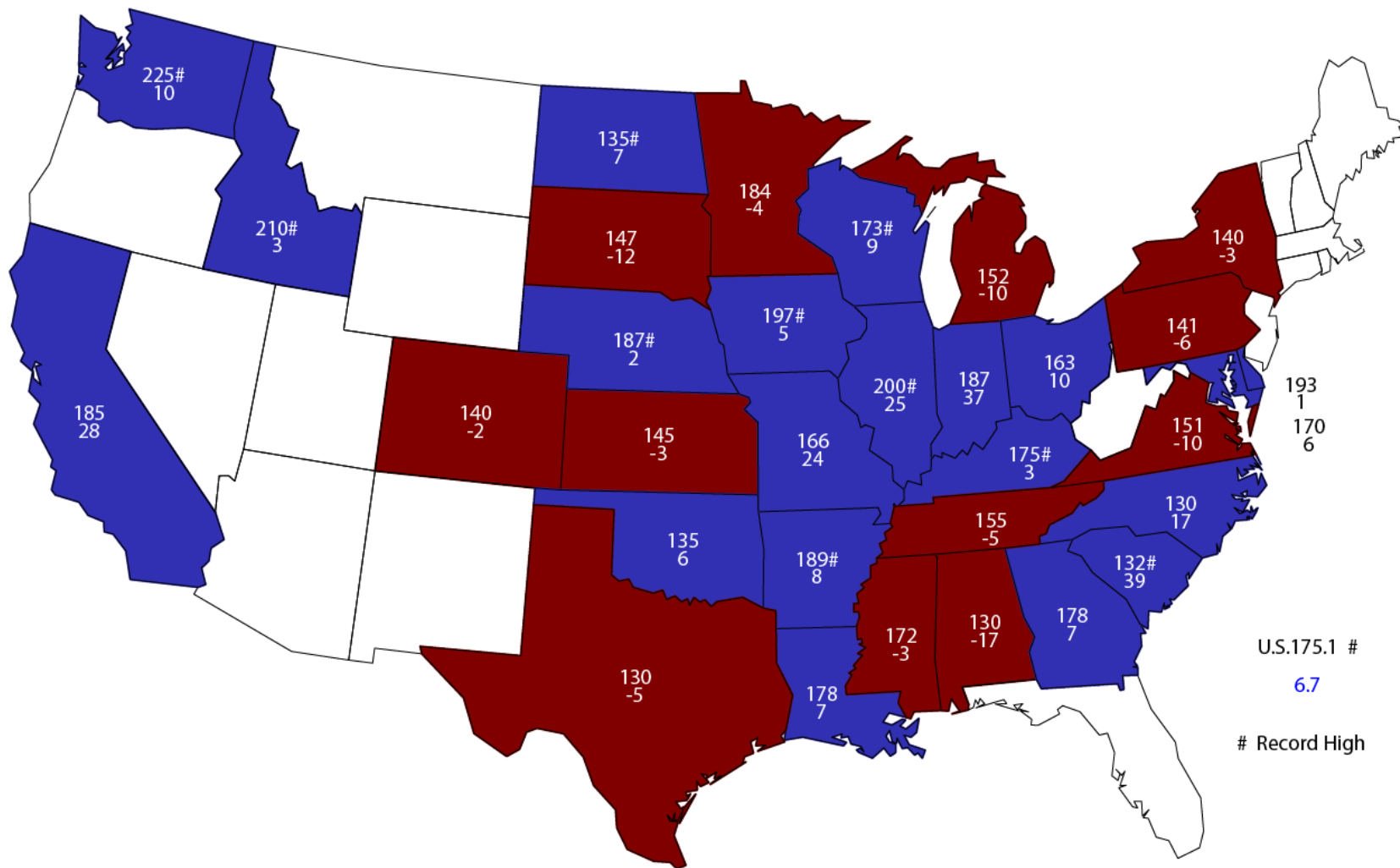
## United States

Bushels per Acre



# August 1, 2016 Corn Yield

## Bushels and Change From Previous Year

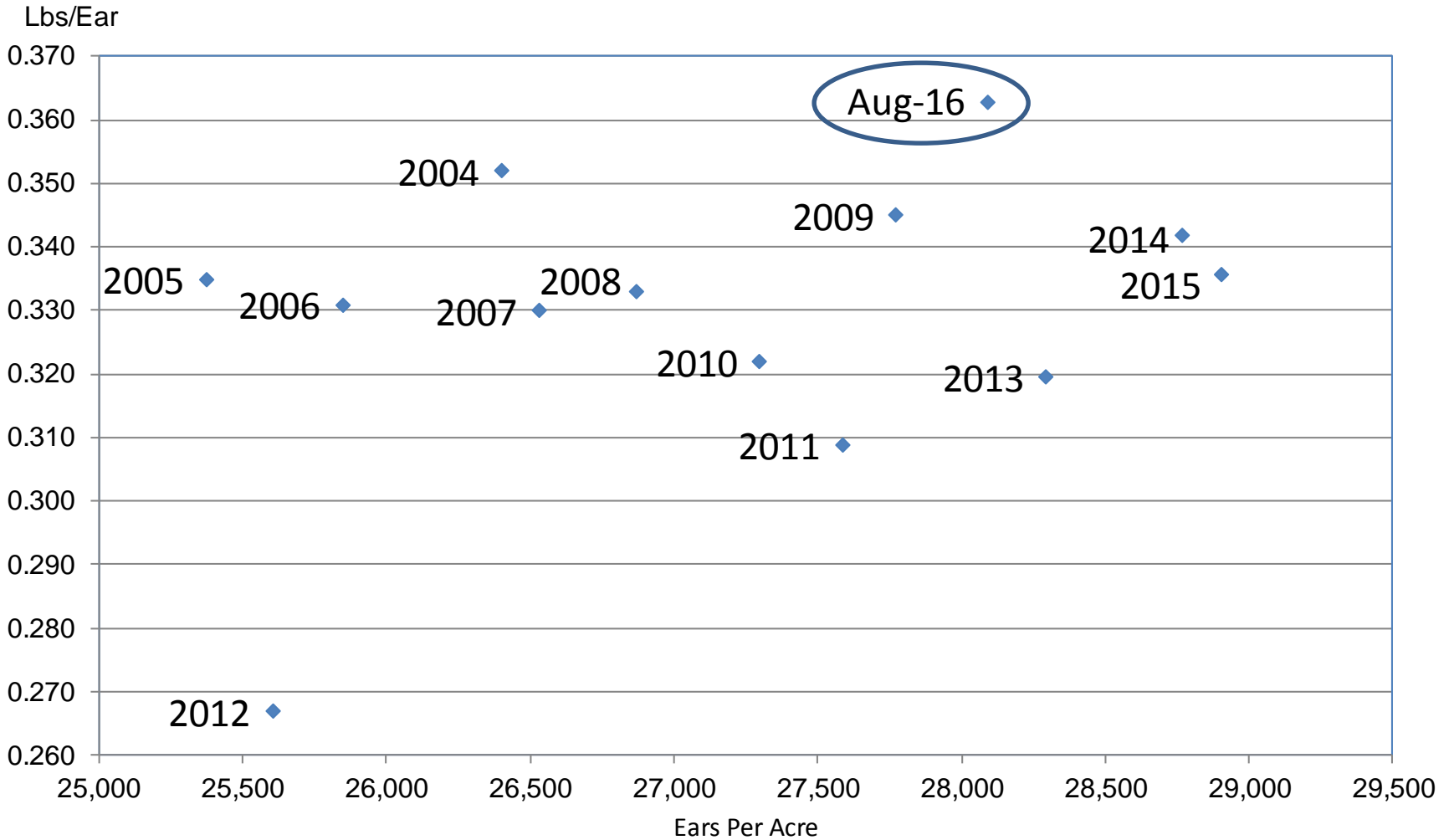


U.S. 175.1 #  
6.7

# Record High

# Corn Objective Yield Region

## Ears Per Acre vs. Implied Ear Weight



Implied Ear Weight = (Published Yield \* 56) / Ears





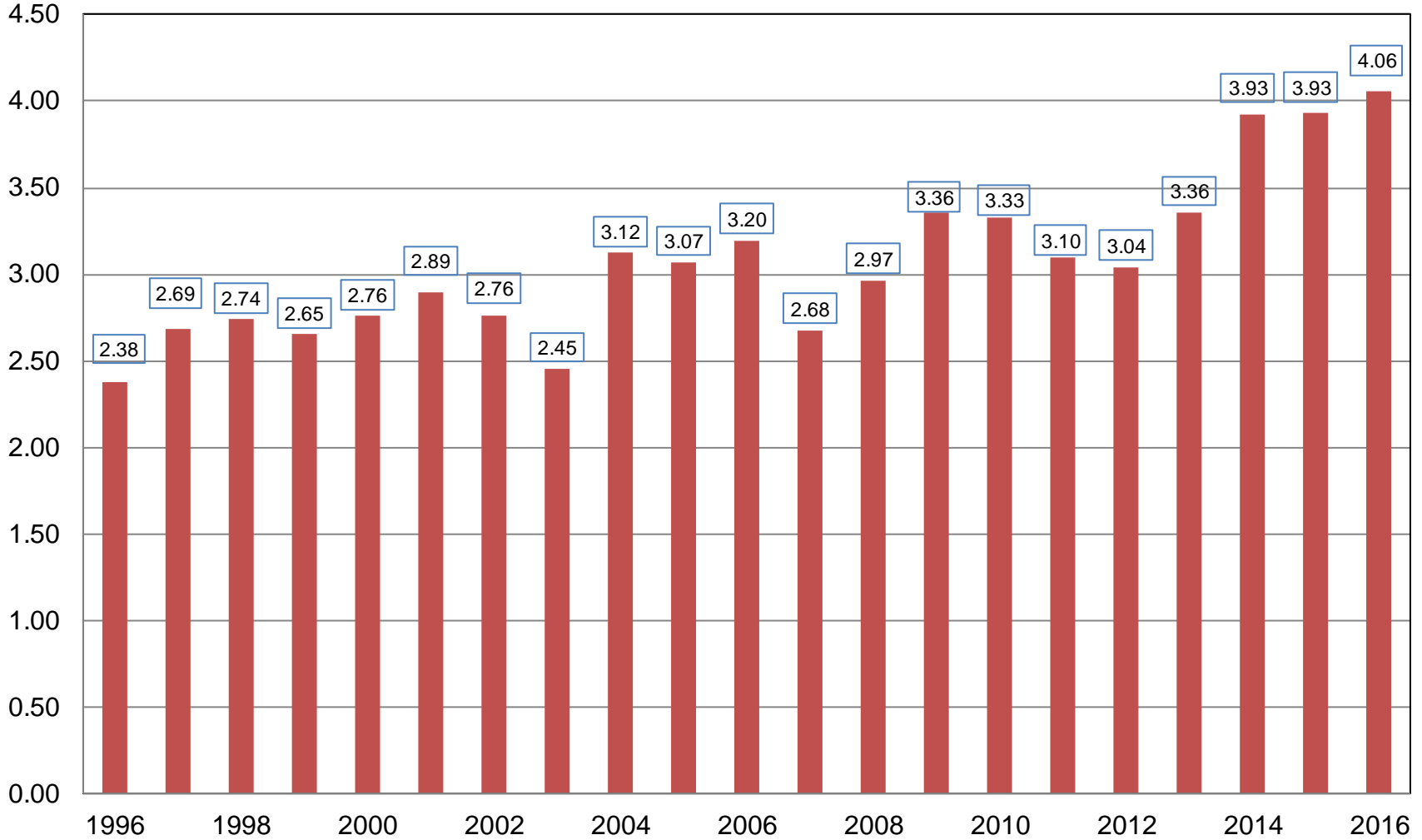
# August 2016 Crop Production

Crop	Unit	August 2016	% Change From Previous Estimate	% Change From Previous Season
Soybeans				
Planted	Mil Ac	83.7	NC	+1.3
Harvested	Mil Ac	83.0	NC	+1.5
Yield	Bu/Ac	48.9	NA	+1.9
Production	Bil Bu	4.06	NA	+3.3



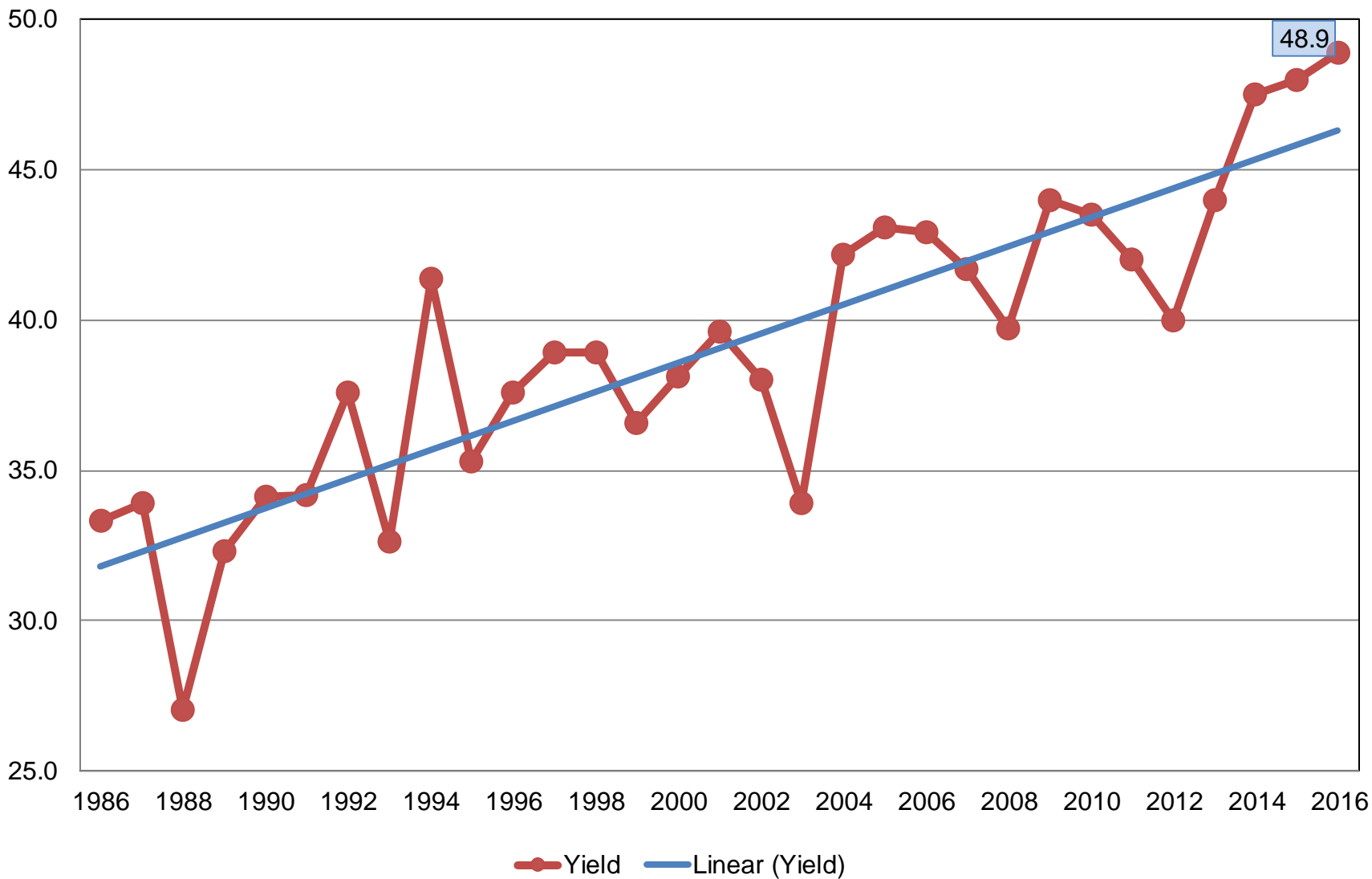
# Soybean Production United States

Billion Bushels

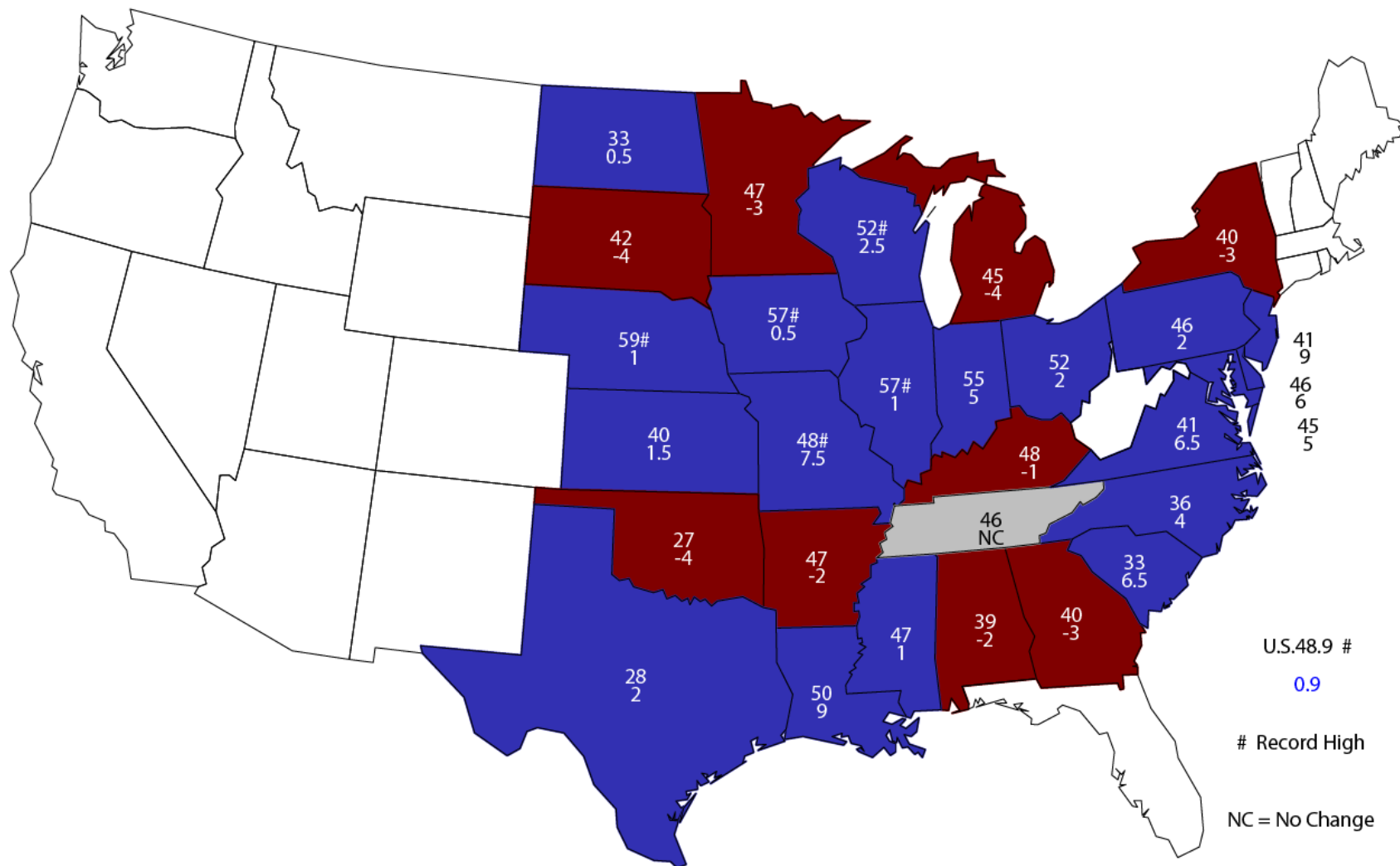


# Soybean Yield United States

Bushels per Acre



# August 1, 2016 Soybean Yield Bushels and Change From Previous Year



U.S. 48.9 #  
0.9

# Record High

NC = No Change

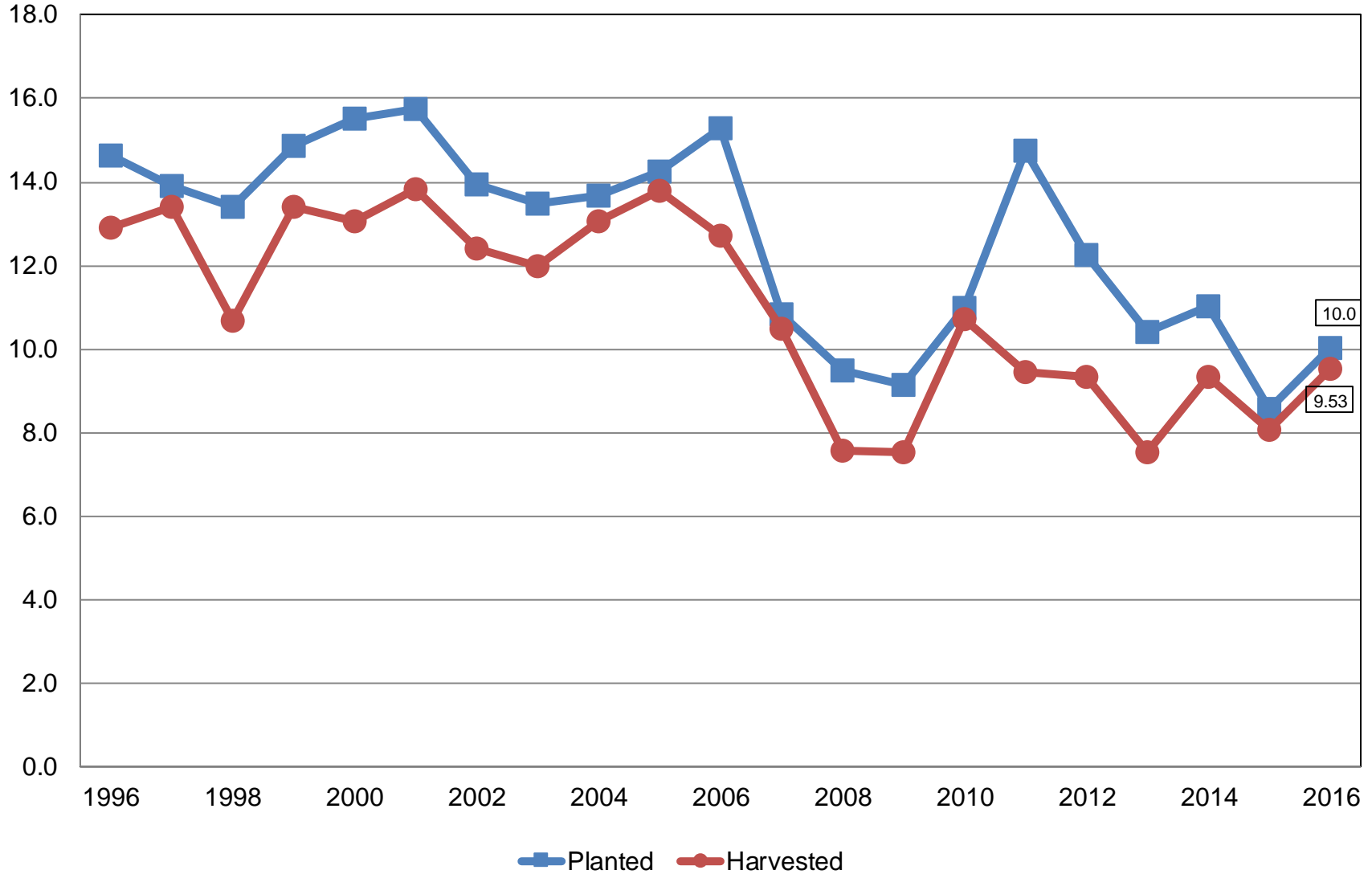


# August 2016 Crop Production

Crop	Unit	August 2016	% Change From Previous Estimate	% Change From Previous Season
All Cotton				
Planted	Mil Ac	10.0	NC	+16.8
Harvested	Mil Ac	9.53	NA	+18.0
Yield	Lb/Ac	800	NA	+4.4
Production	Mil Bls	15.9	NA	+23.2

# All Cotton Acres United States

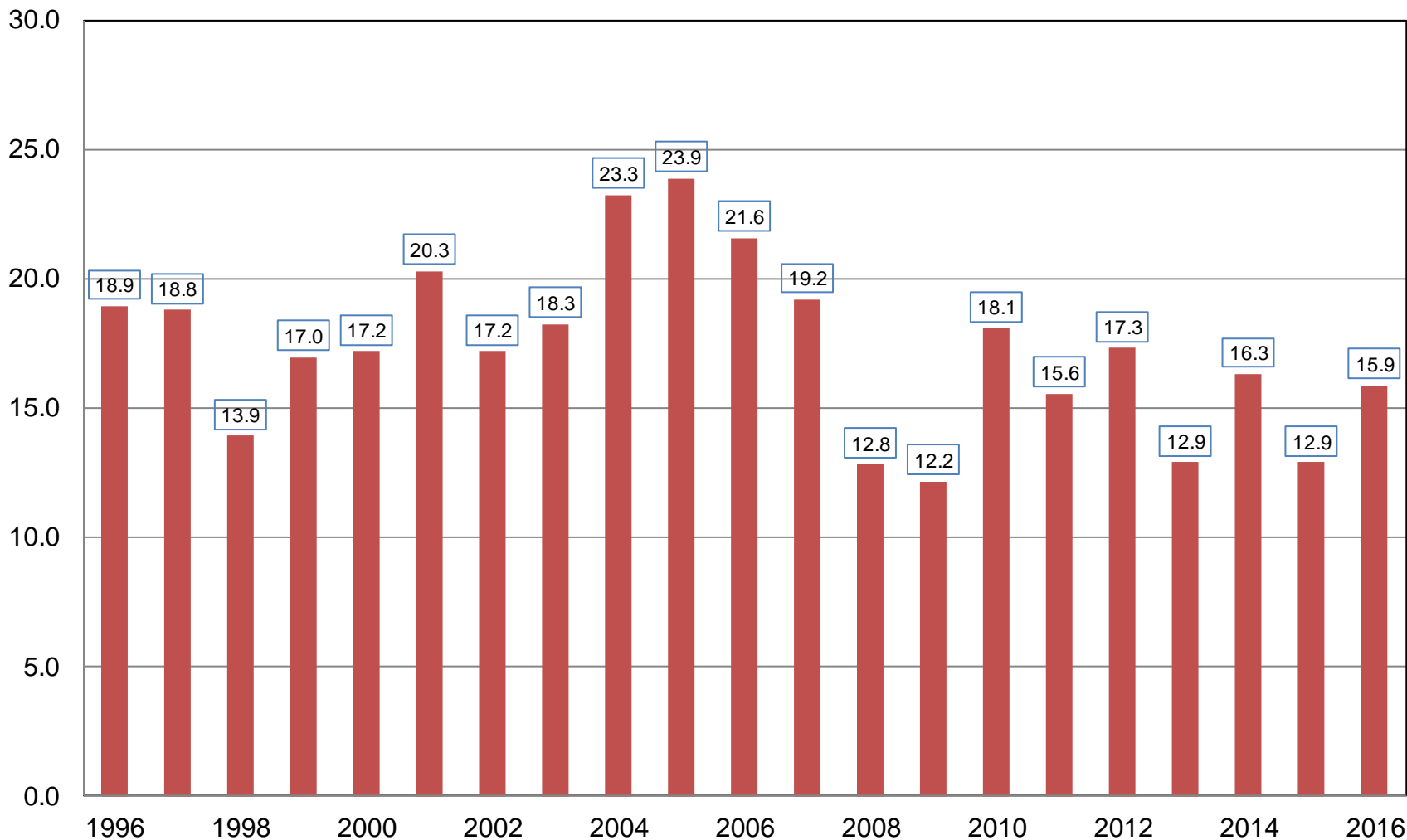
Million Acres





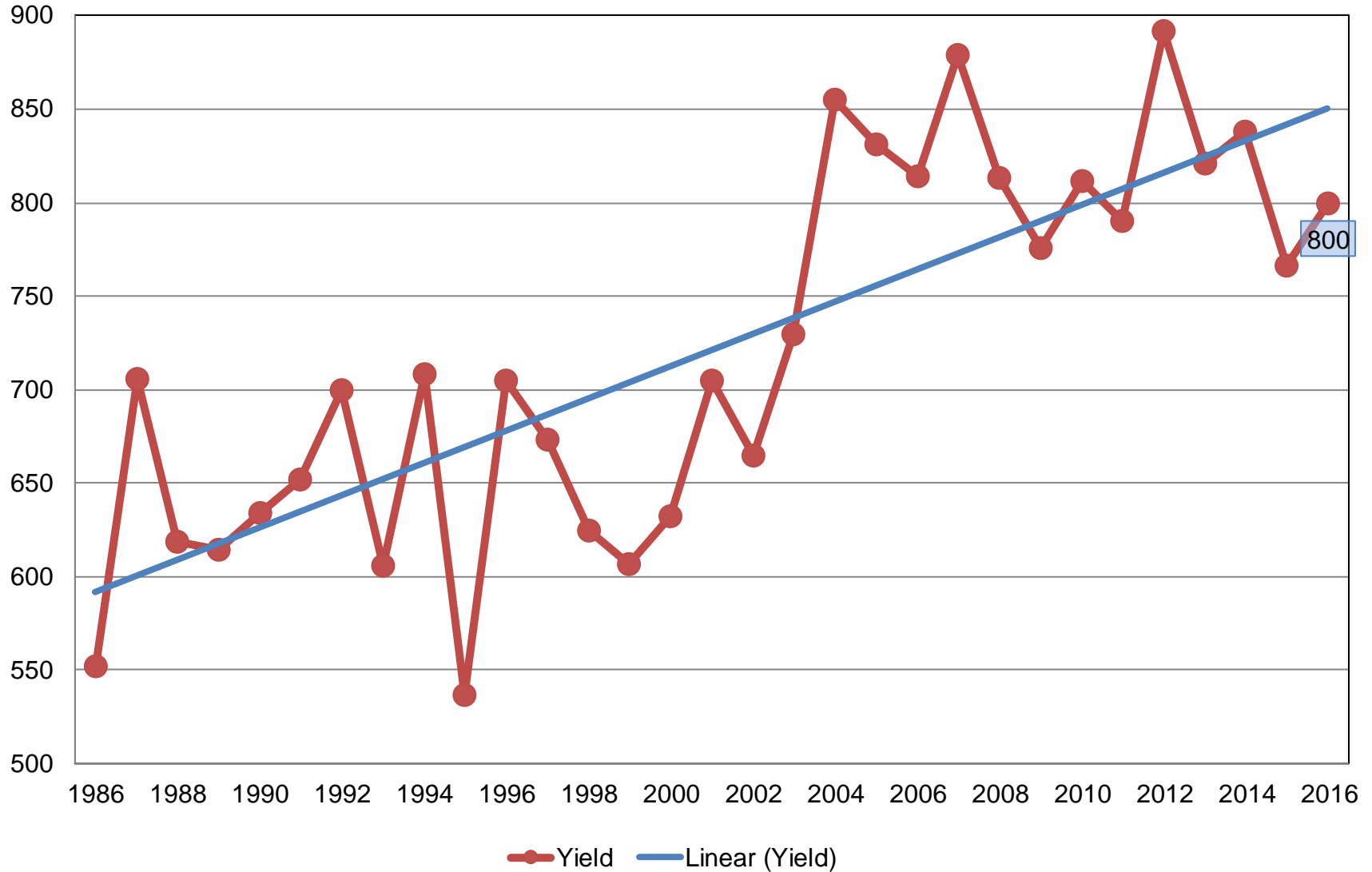
# All Cotton Production United States

Million Bales



# All Cotton Yield United States

Pounds per Acre

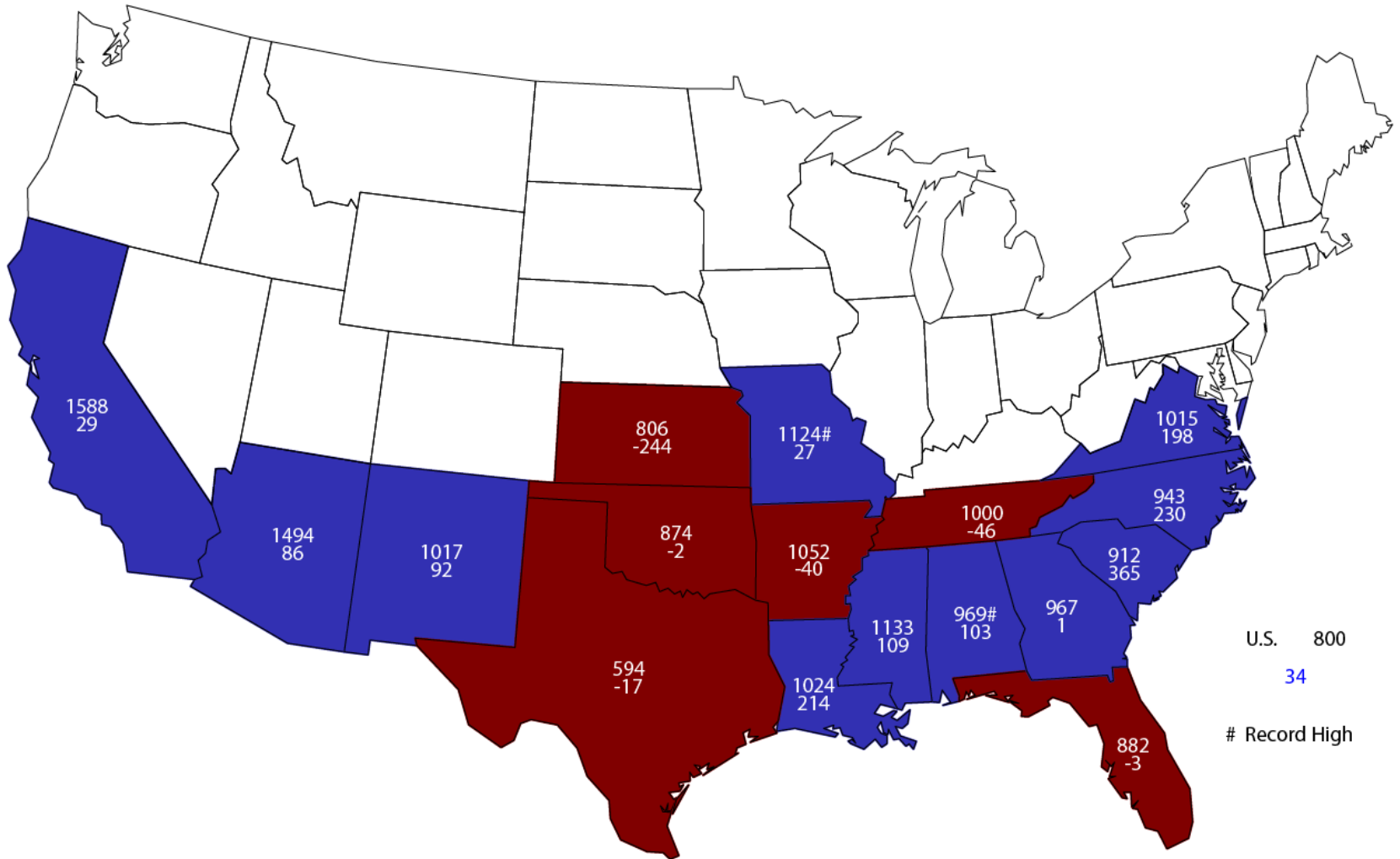






# August 1, 2016 All Cotton Yield

## Pounds and Change From Previous Year



U.S. 800  
34

# Record High

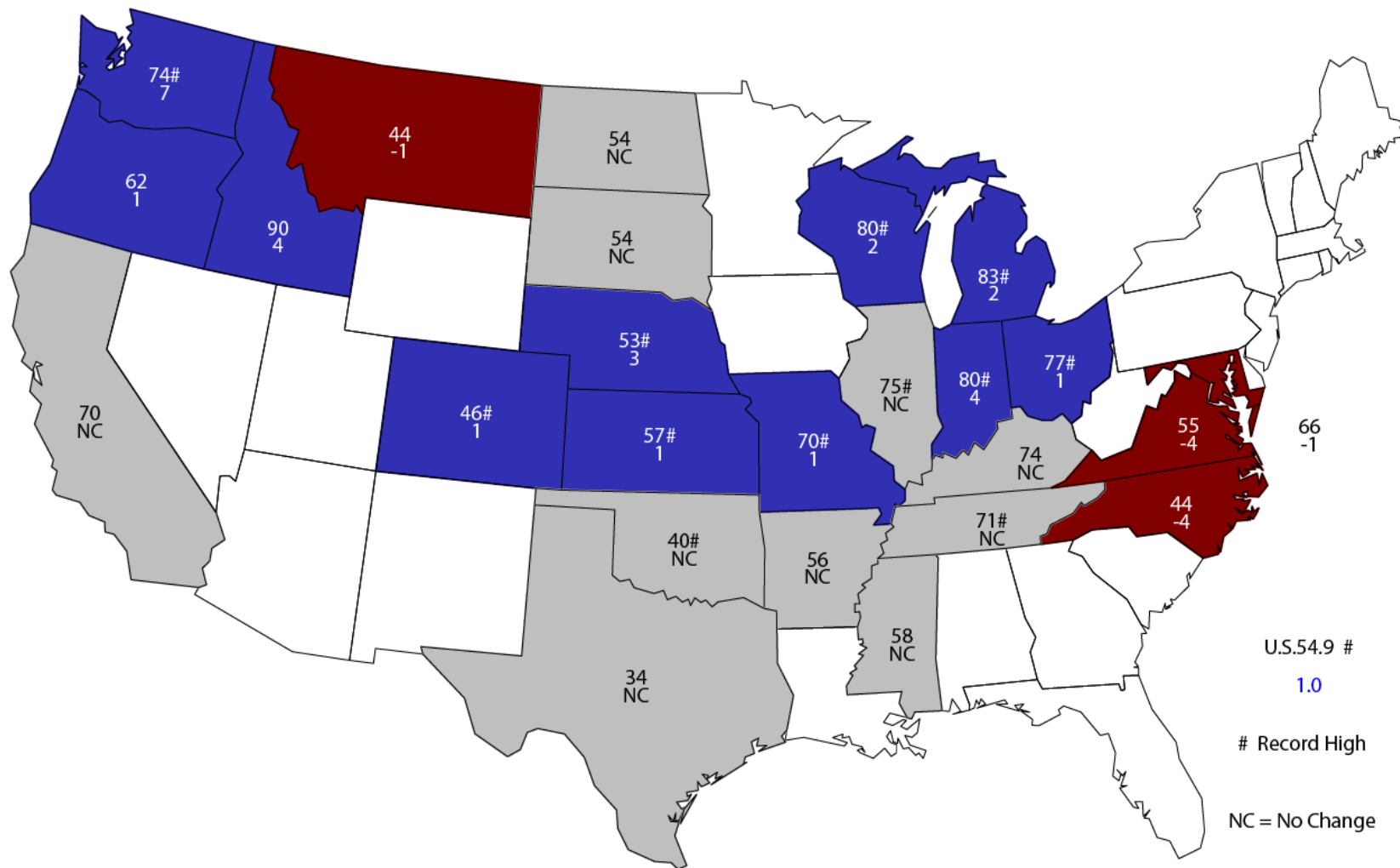


# August 2016 Crop Production

Crop	Unit	August 2016	% Change From Previous Forecast	% Change From Previous Season
Winter Wheat				
Harvested	Mil Ac	30.2	NC	-6.5
Yield	Bu/Ac	54.9	+1.9	+29.2
Production	Bil Bu	1.66	+1.8	+21.0
Spring Wheat				
Harvested	Mil Ac	11.8	NC	-8.5
Yield	Bu/Ac	48.3	+3.9	+4.3
Production	Mil Bu	571	+3.8	-4.6
Durum Wheat				
Harvested	Mil Ac	2.08	NC	+9.8
Yield	Bu/Ac	44.1	+10.8	+1.4
Production	Mil Bu	91.7	+10.8	+11.2
All Wheat				
Production	Bil Bu	2.32	+2.6	+13.1

# August 1, 2016 Winter Wheat Yield

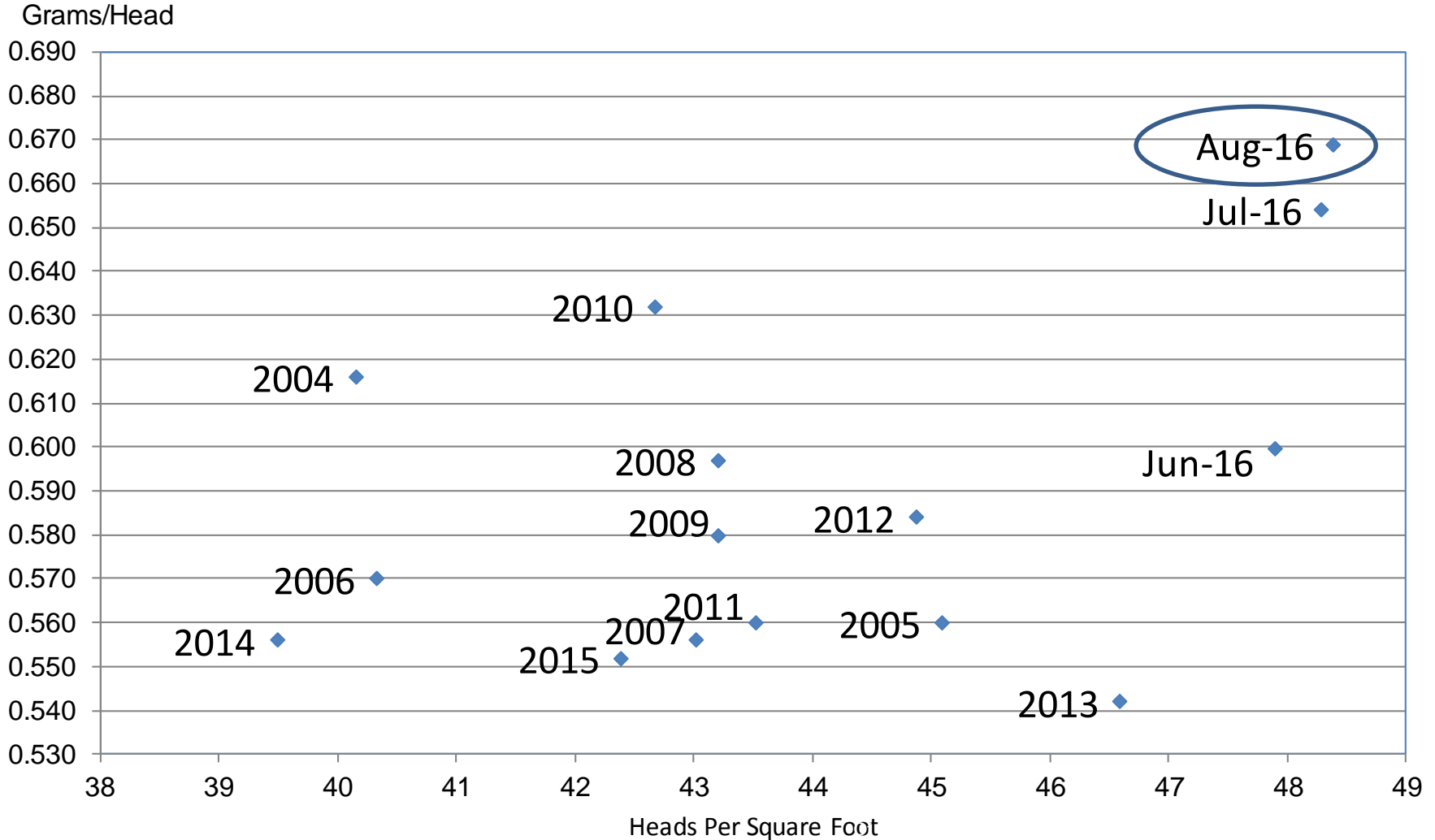
## Bushels and Change From Previous Month



U.S. 54.9 #  
 1.0  
 # Record High  
 NC = No Change

# Wheat Objective Yield Region

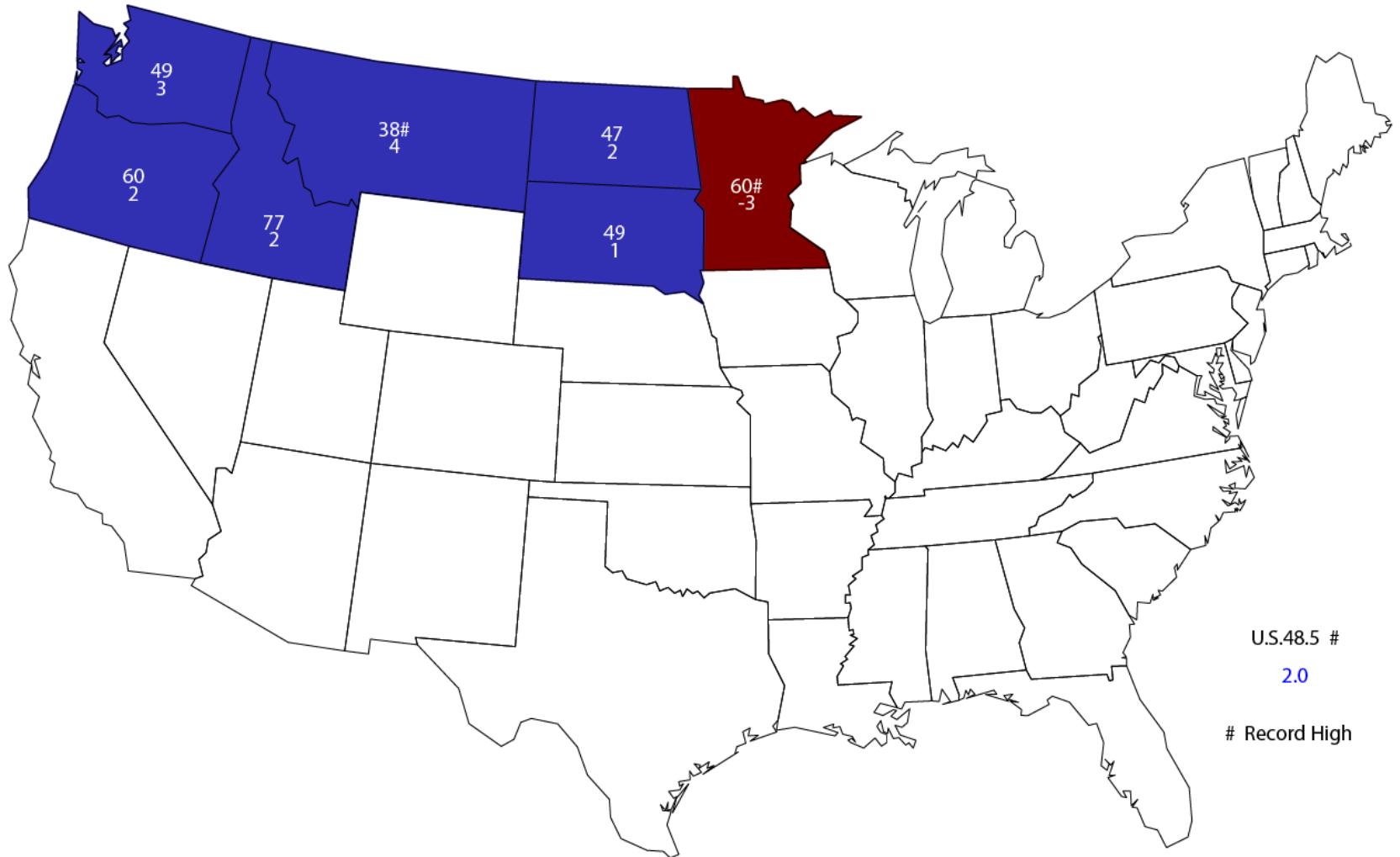
## Heads Per Square Foot vs. Implied Head Weight



Implied Head Weight = Published Yield / (Heads\*1.6006)

# August 1, 2016 Other Spring Wheat Yield

## Bushels and Change From Previous Month



U.S.48.5 #

2.0

# Record High



# August 2016 Crop Production

Crop	Unit	August 2016	% Change From Previous Forecast	% Change From Previous Season
Oats	Mil Bu	76.9	+0.3	-14.2
Barley	Mil Bu	190	+3.8	-11.5
Sorghum	Mil Bu	475	NA	-20.5
Alfalfa Hay	Mil Tons	61.5	NA	+4.3
Other Hay	Mil Tons	79.0	NA	+4.7
Rice	Mil Cwt	244	NA	+27.0
Peanuts	Bil Lbs	6.11	NA	-1.6



# August 2016 Crop Production

Crop	Unit	August 2016	% Change From Previous Forecast	% Change From Previous Season
All Tobacco	Mil Lbs	697	NA	-2.7
Dry Beans	Mil Cwt	29.5	NA	-2.0
Sugarbeets	Mil Tons	36.0	NA	+1.8
Sugarcane	Mil Tons	33.2	NA	+2.8
Summer Potatoes	Mil Cwt	19.2	NA	+22.1



# August 2016 Crop Production

Crop	Unit	August 2016	% Change From Previous Forecast	% Change From Previous Season
Peaches	Thou Tons	807	NA	-4.8
Apples	Bil Lbs	10.4	NA	+4.1
Pears	Thou Tons	782	NA	-4.7
Grapes	Mil Tons	7.82	NA	+1.9
Hops	Mil Lbs	91.8	NA	+16.4





# Upcoming Reports

Release Date	Report Title
August 19	Cattle on Feed
August 26	Rice Stocks
August 31	Agricultural Prices
September 1	CAIR: Cotton CAIR: Fats & Oils CAIR: Grain Crushings
September 12	Crop Production



United States Department of Agriculture  
**National Agricultural Statistics Service**

---

---

**All Reports Available At**  
[www.nass.usda.gov](http://www.nass.usda.gov)

**For Questions**  
202-720-2127  
800-727-9540  
[nass@nass.usda.gov](mailto:nass@nass.usda.gov)