



United States Department of Agriculture
National Agricultural Statistics Service



Hogs & Pigs Inventory
June 1, 2016

Executive Briefing



Survey Overview



June Hogs & Pigs

Data Collection Period

May 31 – June 14

Sample Size

8,154

Collection Methods

Mail, Telephone, Internet, Face-to-Face Interview

Primary Data Items

Total Inventory: by class, weight group, and quarter
sows farrowing, pig crop, and pigs per litter



U.S. Hogs and Pigs Revisions



Survey	Item	Initial Estimate (1,000 head)	Previous Revision (1,000 head)	Current Revision (1,000 head)	Net Revision (1,000 head)	Current Estimate (1,000 head)
December 1, 2015	All Hogs and Pigs	68,299	+90 +0.1%	+480 +0.7%	+570 +0.8%	68,869
	Pig Crop	30,271		+577 +1.9%		30,848
March 1, 2016	All Hogs and Pigs	67,644		-170 -0.3%		67,474



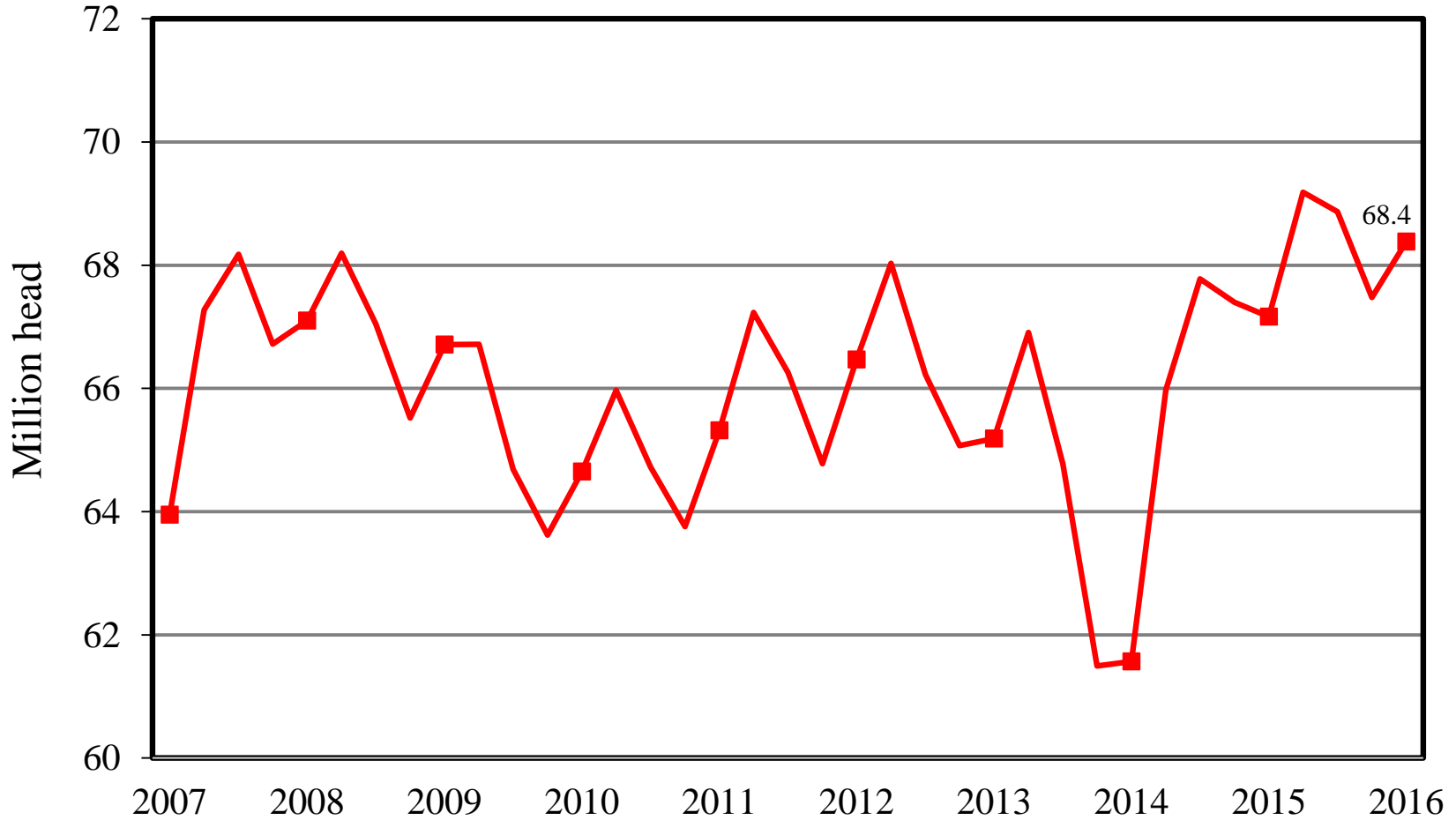
U.S. Hogs & Pigs June 1



Items	2015	2016	% PY
	1,000 head		
All Hogs & Pigs	67,165	68,381	102
Breeding Hogs	5,926	5,979	101
Market Hogs	61,240	62,402	102
180 lbs & over	11,429	11,566	101
120-179 lbs	12,985	13,141	101
50-119 lbs	17,461	17,848	102
less than 50 lbs	19,365	19,846	102
Sows Farrowed	2,854	2,896	101
Pig Crop	29,593	30,347	103
	number		
Pigs per Litter	10.37	10.48	101
	1,000 head		
Jun-Aug Farrowings	3,017	2,949	98
Sep-Nov Farrowings	2,929	2,896	99

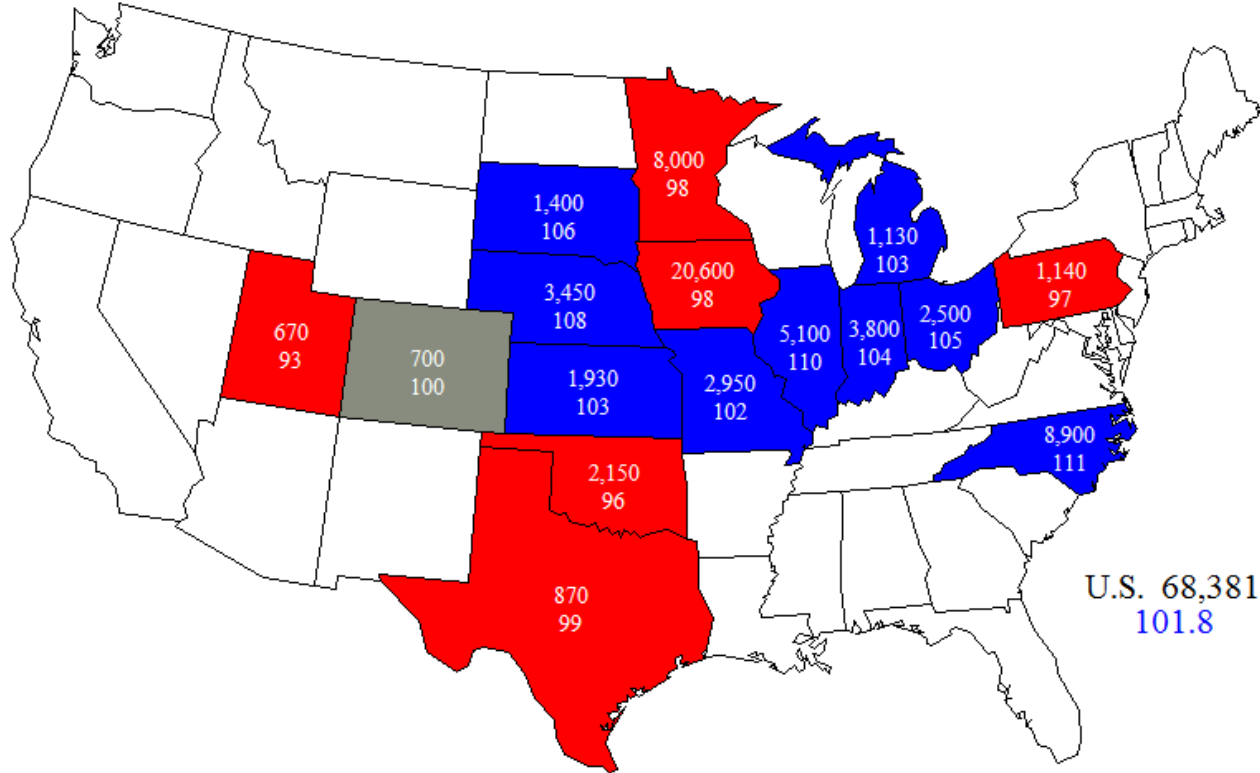
U.S. Quarterly Hogs & Pigs

2007 - 2016



June 1, 2016 Hogs and Pigs Inventory

(000) Head and Percent of Previous Year





NASS Estimates Compared to Trade Expectations Percent of Previous Year

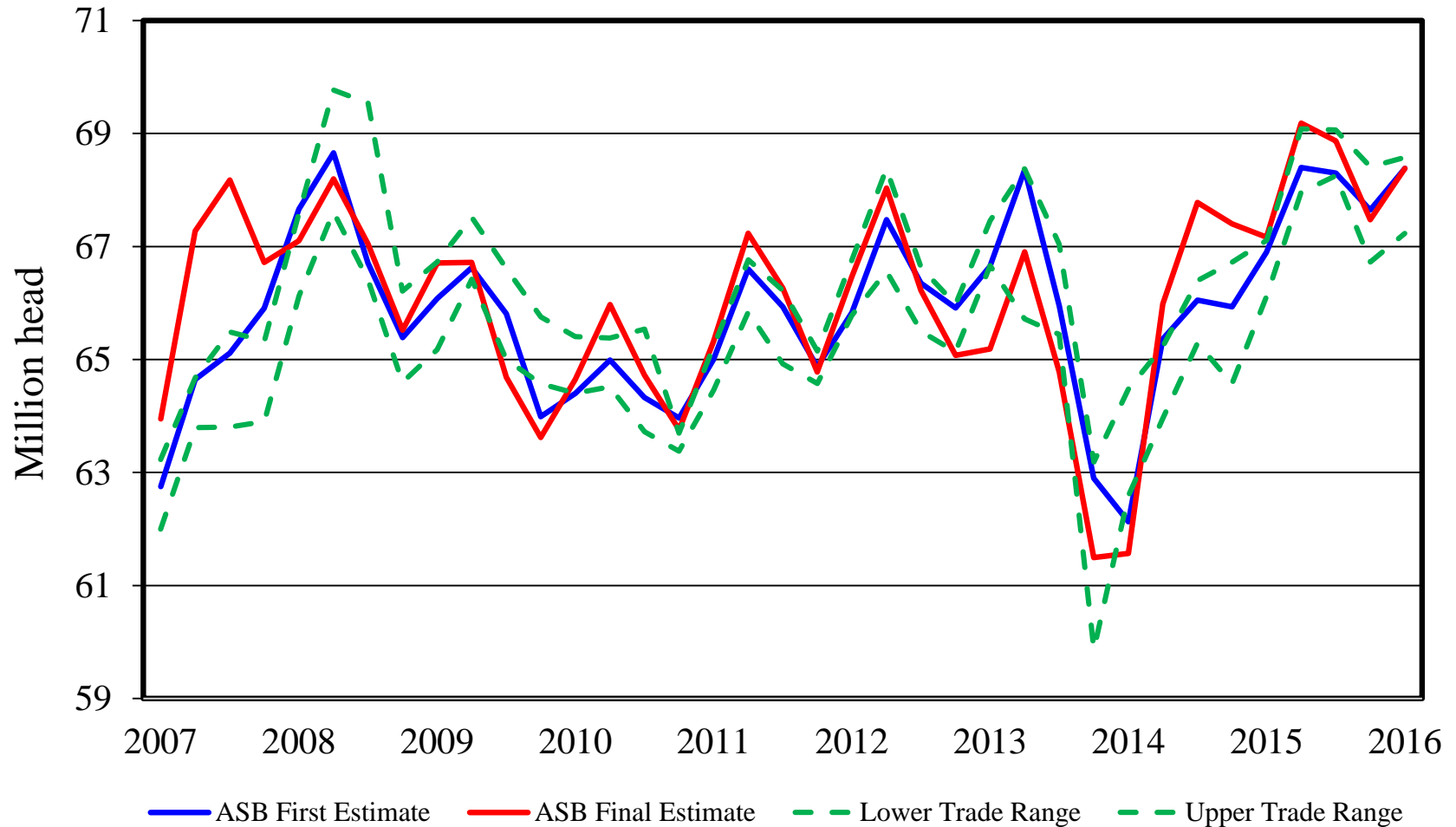


Inventory Items	NASS Estimate	Trade Average	Trade Range
All Hogs & Pigs	101.8%	100.7%	100.1% – 102.1%
Breeding Hogs	100.9%	100.4%	99.7% – 101.6%
Market Hogs	101.9%	100.7%	100.1% – 102.1%
Mar – May Pig Crop	102.6%	100.7%	99.6% – 101.0%
Farrowing Intentions			
Jun – Aug	97.8%	97.8%	96.5% – 99.0%
Sep – Nov	98.9%	100.8%	99.4% – 102.6%

All Hogs and Pigs

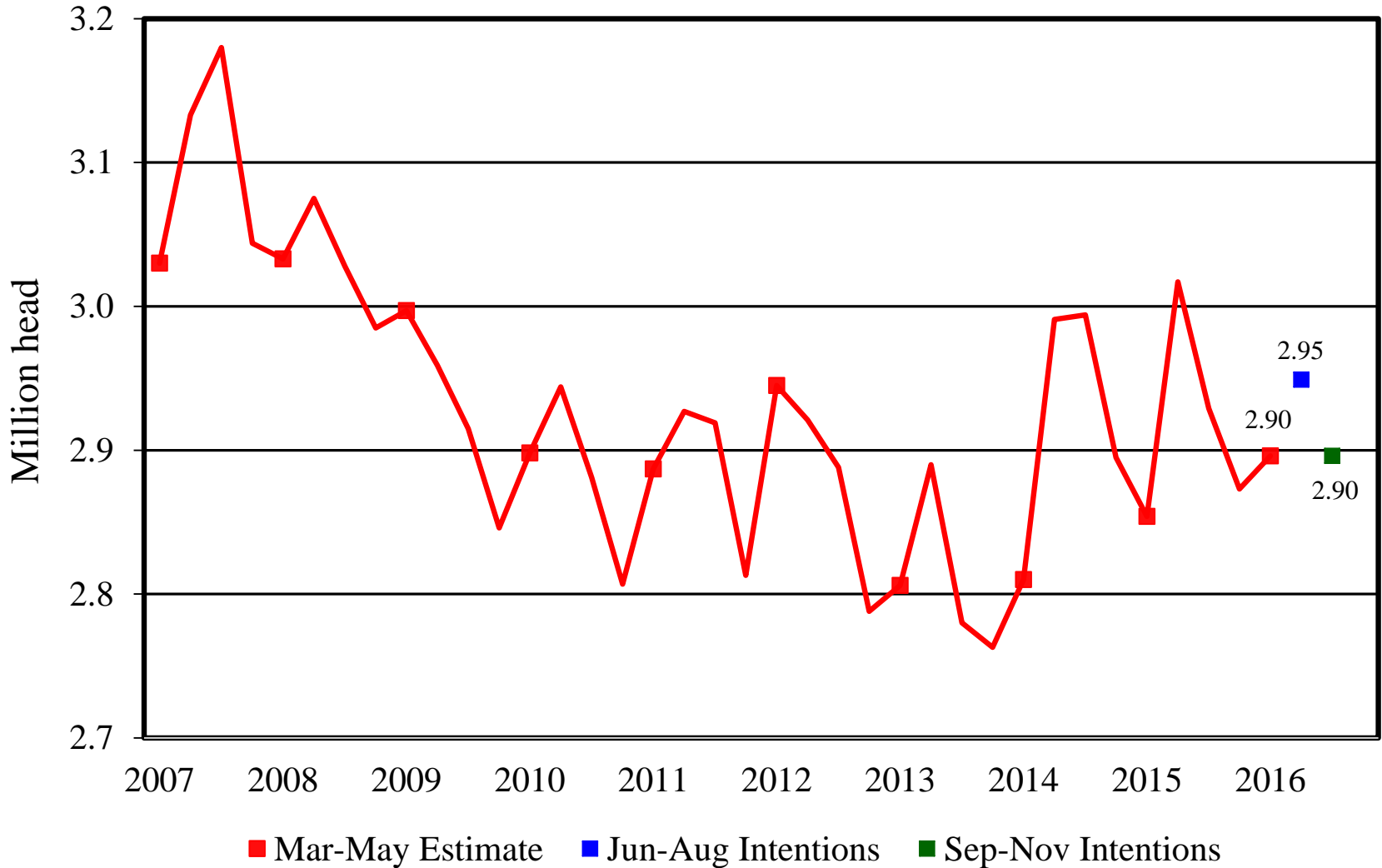
First Estimate versus Final Estimate

2007 - 2016



U.S. Quarterly Sows Farrowed

2007-2016





Breeding Herd Inventory

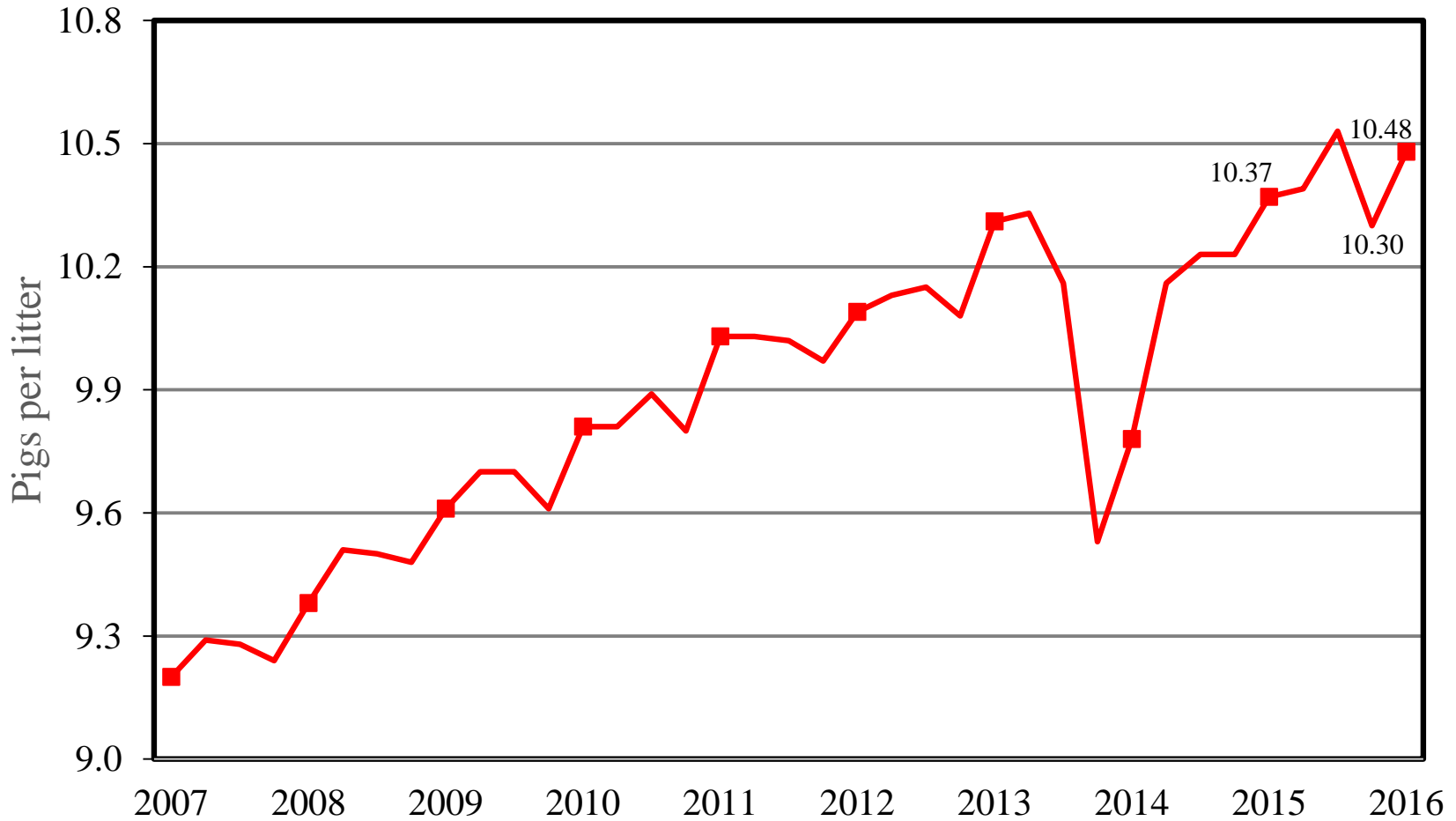
Disposition & Utilization



Year	Mar 1 Estimate (1,000 head)	Slaughter (1,000 head)	Additions (1,000 head)	Jun 1 Estimate (1,000 head)	Sow Utilization (Percent)
2007	6,149	955	975	6,169	49
2008	6,200	1,023	954	6,131	49
2009	5,992	876	852	5,968	50
2010	5,760	847	875	5,788	50
2011	5,788	826	841	5,803	50
2012	5,820	813	855	5,862	51
2013	5,834	848	898	5,884	48
2014	5,851	775	779	5,855	48
2015	5,982	781	725	5,926	48
2016	5,980	794	793	5,979	48

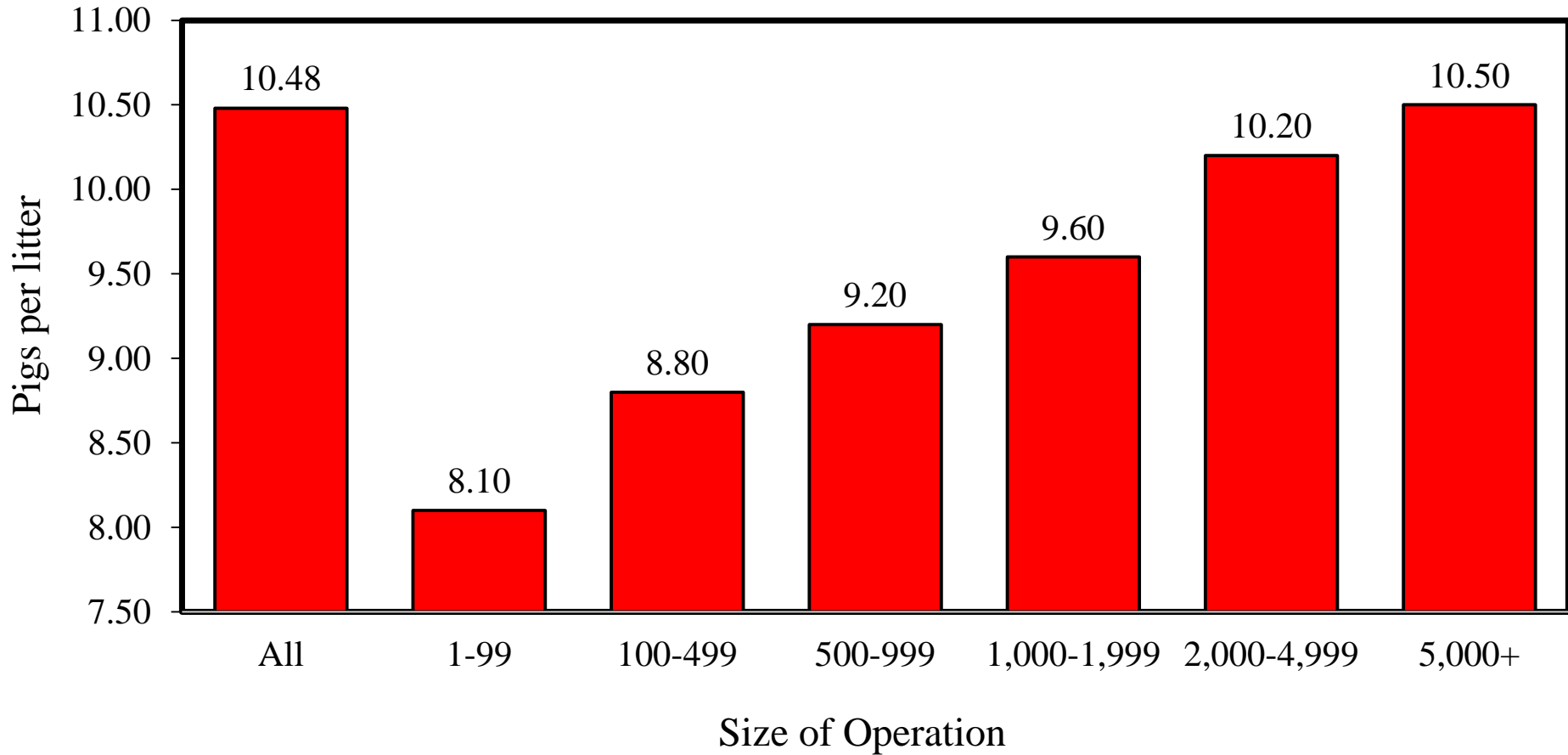
U.S. Quarterly Pigs per Litter

2007-2016



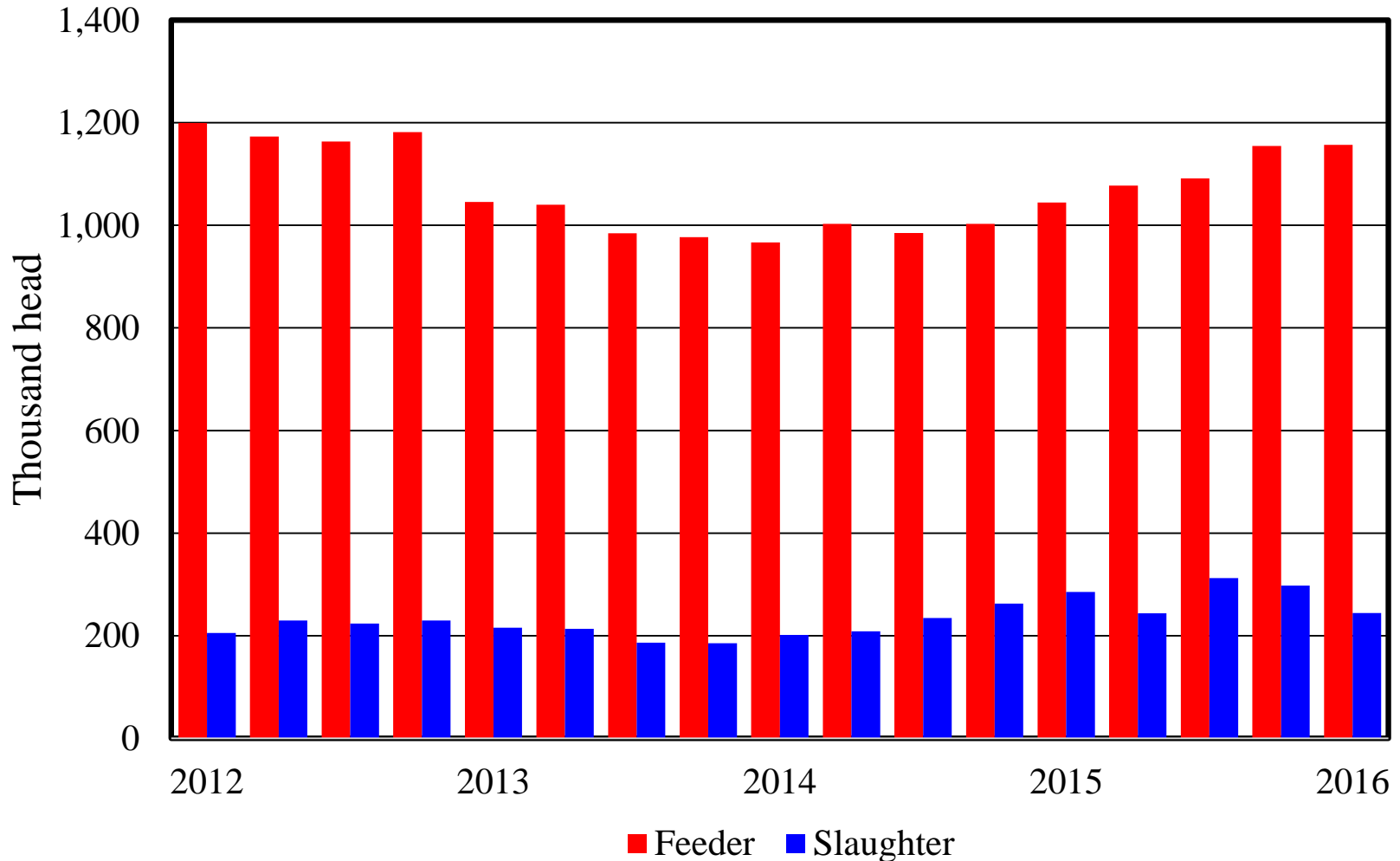
USDA U.S. Pigs per Litter by Size of Operation

March-May 2016

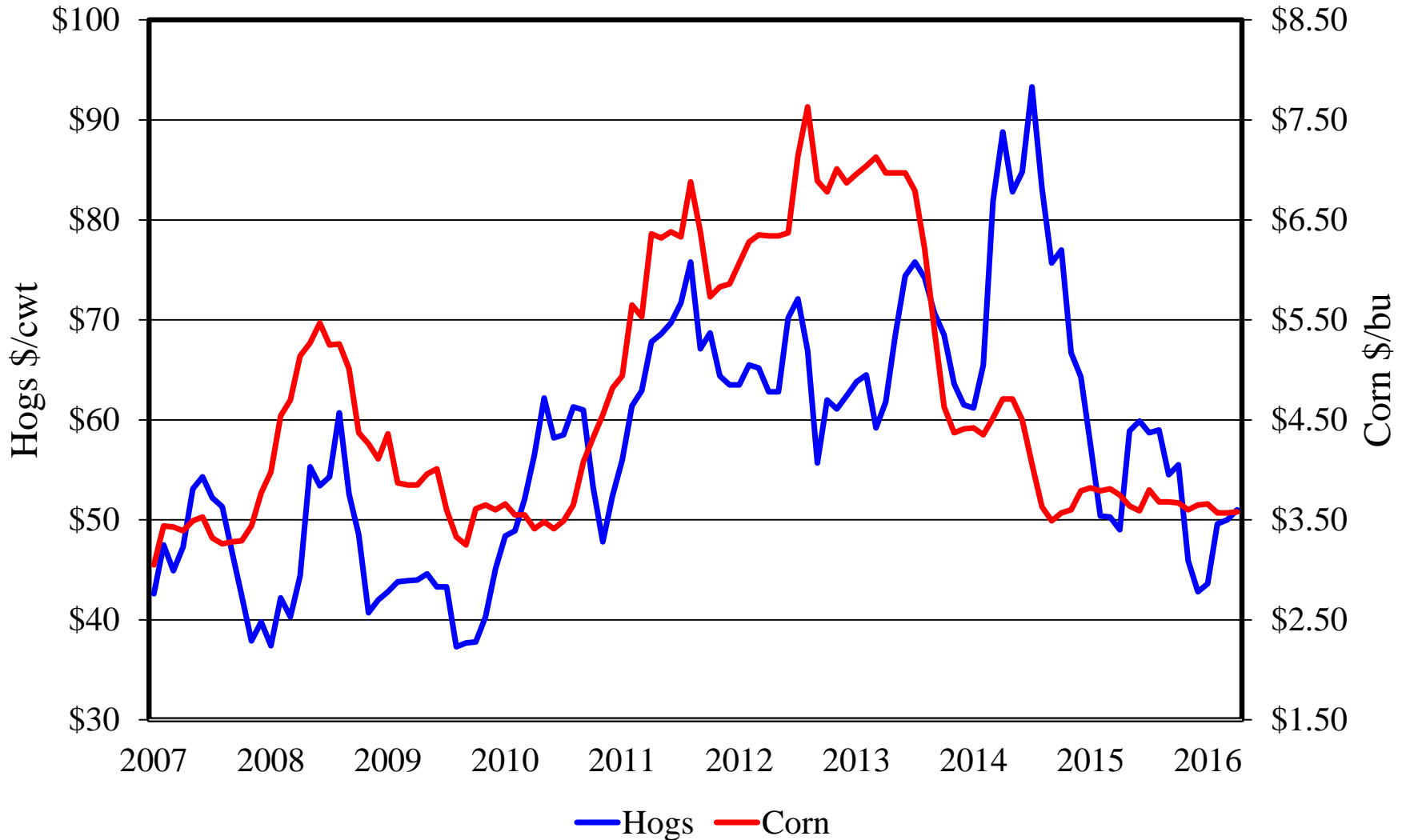


Canadian Imports by Quarter

Feeder Pigs and Slaughter Hogs



U.S. Prices Received by Farmers for Hogs & Corn





Upcoming NASS Reports



Release Date	Report Title
June 29	Agricultural Prices
June 30	Acreage Grain Stocks
July 1	Cotton System Fats & Oils Grain Crushings
July 12	Crop Production
July 21	Milk Production
July 22	Cattle on Feed



United States Department of Agriculture
National Agricultural Statistics Service



All Reports Available At
www.nass.usda.gov

For Questions
(202) 720-3570
(800) 727-9540
nass@nass.usda.gov