



United States Department of Agriculture  
**National Agricultural Statistics Service**

---

---

**Prospective Plantings**  
**Grain Stocks**  
**Rice Stocks**

Executive Summary

Lance Honig, Chief  
Crops Branch



# Contents

Field Crops	Stocks
Principal Crops Planted Acres	Corn
Feed Grain Acres	Soybeans
Food Grain Acres	Sorghum
Oilseed Acres	All Wheat
Other Crop Acres	Barley
	Oats
	Rough Rice

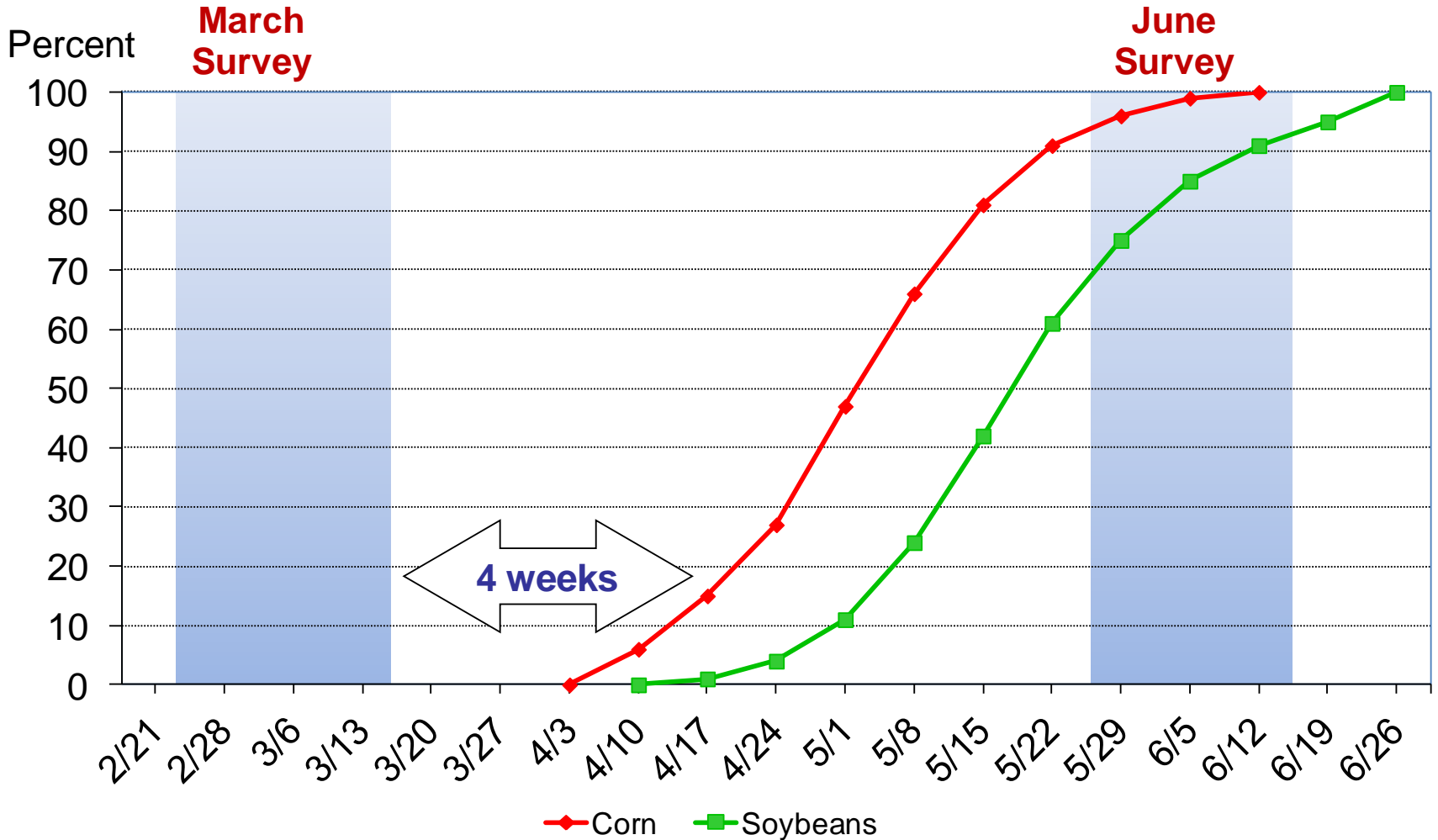


# Survey Overview

	<b>March Ag Survey</b>	<b>Off-Farm Grain Stock Survey</b>
Survey Type	Farmer Reported	Reported
Collection Method	Mail, Phone, Internet, Personal Interview	Mail, Phone, Internet, Personal Interview
Crops Included	Acreage Intentions, On-Farm Stocks	Grains and Oilseed On Hand
States	All except AK and HI	All except AK, HI, and NV
Sample Size	83,374	~ 8,600 Facilities
Collection Period	Feb 22– Mar 17	Feb 22 – Mar 17

# Acreage Intentions vs. Actual Planted Acres

## Usual Planting Progress





# Principal Crops Planted Acreage

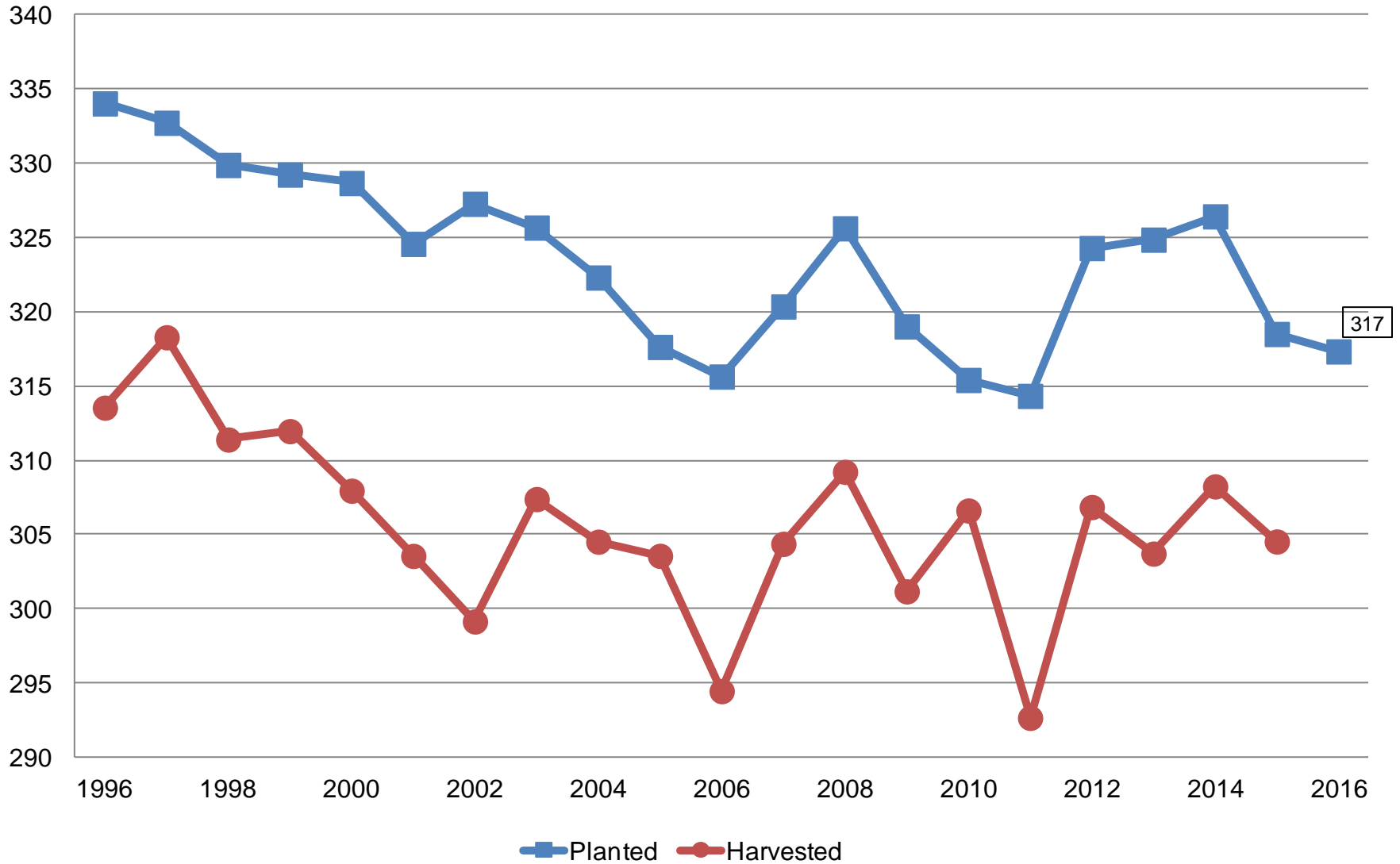
## United States

Year	Principal Crops	Change From Previous Year
	<i>Million Acres</i>	
2007	320.4	+4.7
2008	325.6	+5.3
2009	319.0	-6.6
2010	315.4	-3.6
2011	314.3	-1.1
2012	324.3	+10.0
2013	324.9	+0.6
2014	326.4	+1.6
2015	318.5	-7.9
2016	317.3	-1.2



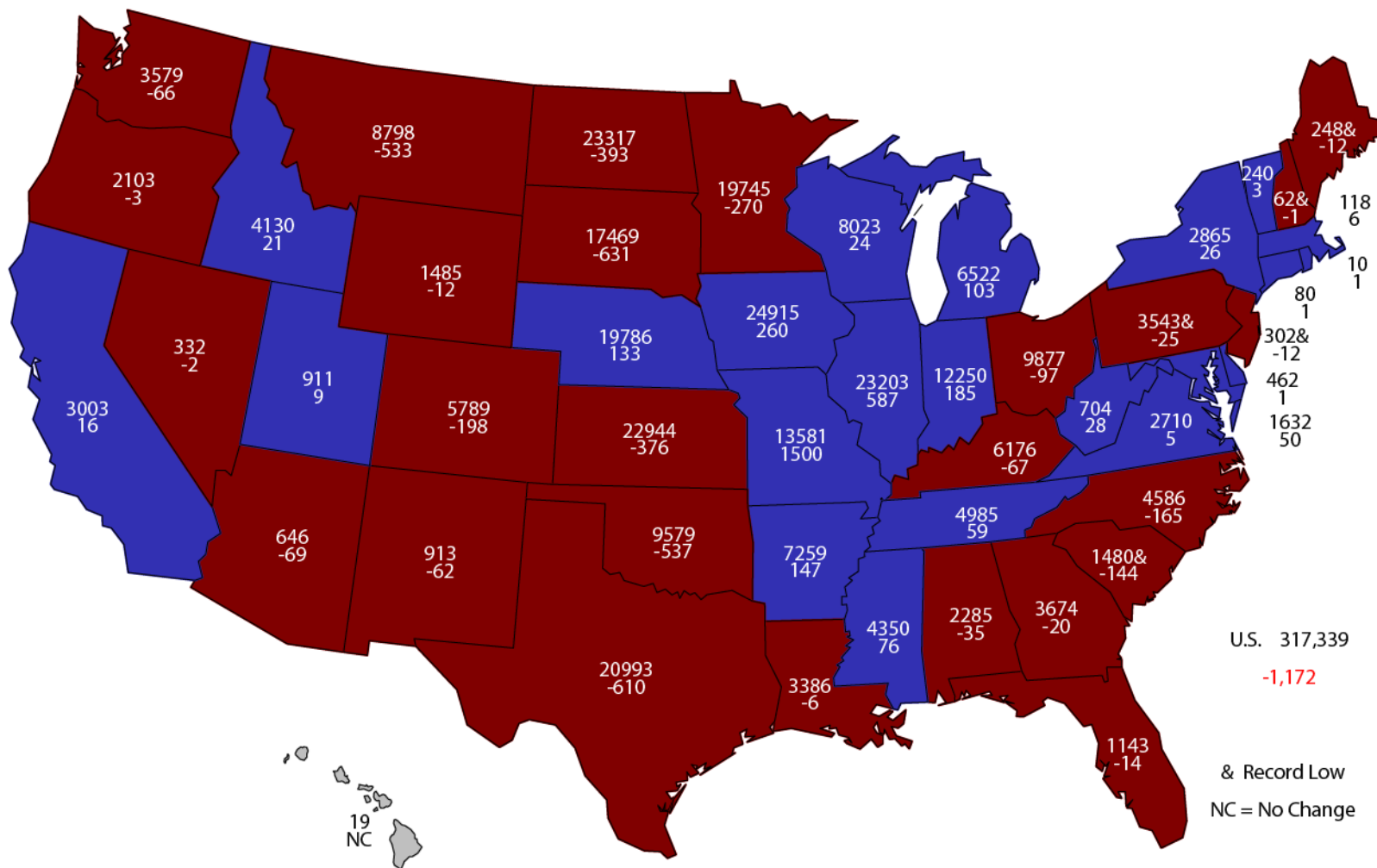
# Principal Crops United States

Million Acres



# 2016 Principal Crops Planted Area

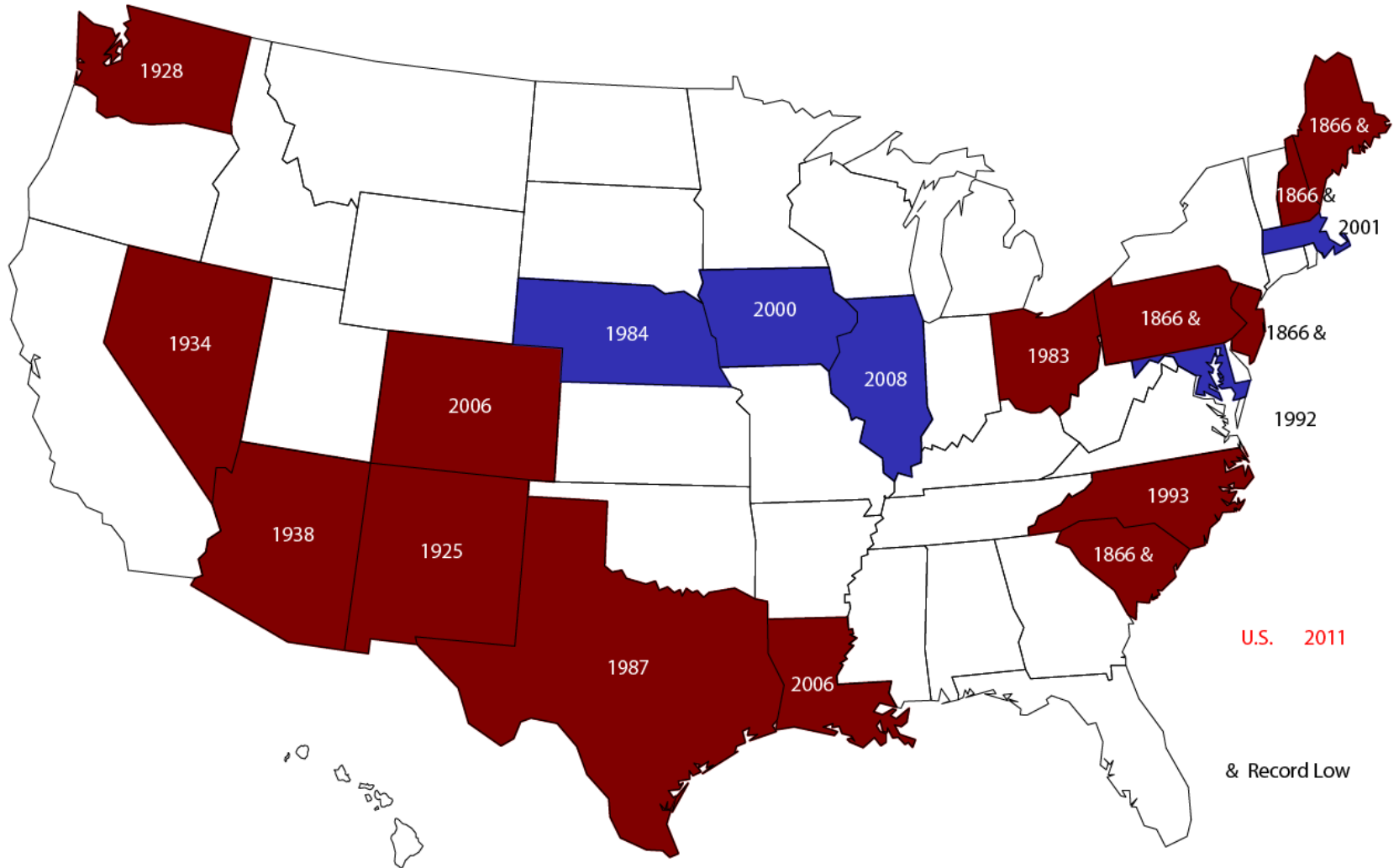
(000) Acres and Change From Previous Year



U.S. 317,339  
 -1,172  
 & Record Low  
 NC = No Change

# 2016 Principal Crops Planted Area

Highest (Blue) / Lowest (Red) Since Year Shown



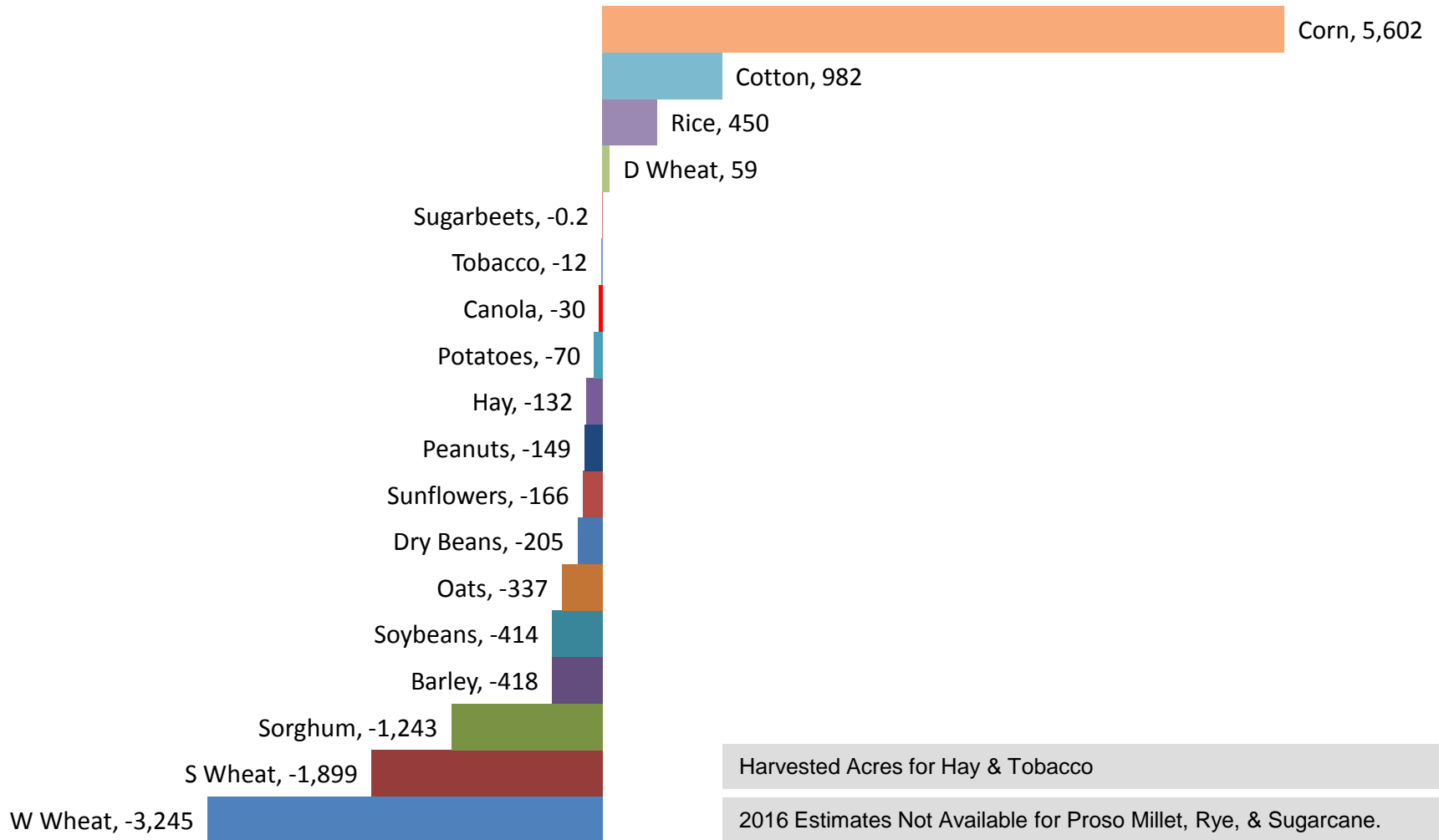
U.S. 2011  
& Record Low





# Change in Planted Acres (000)

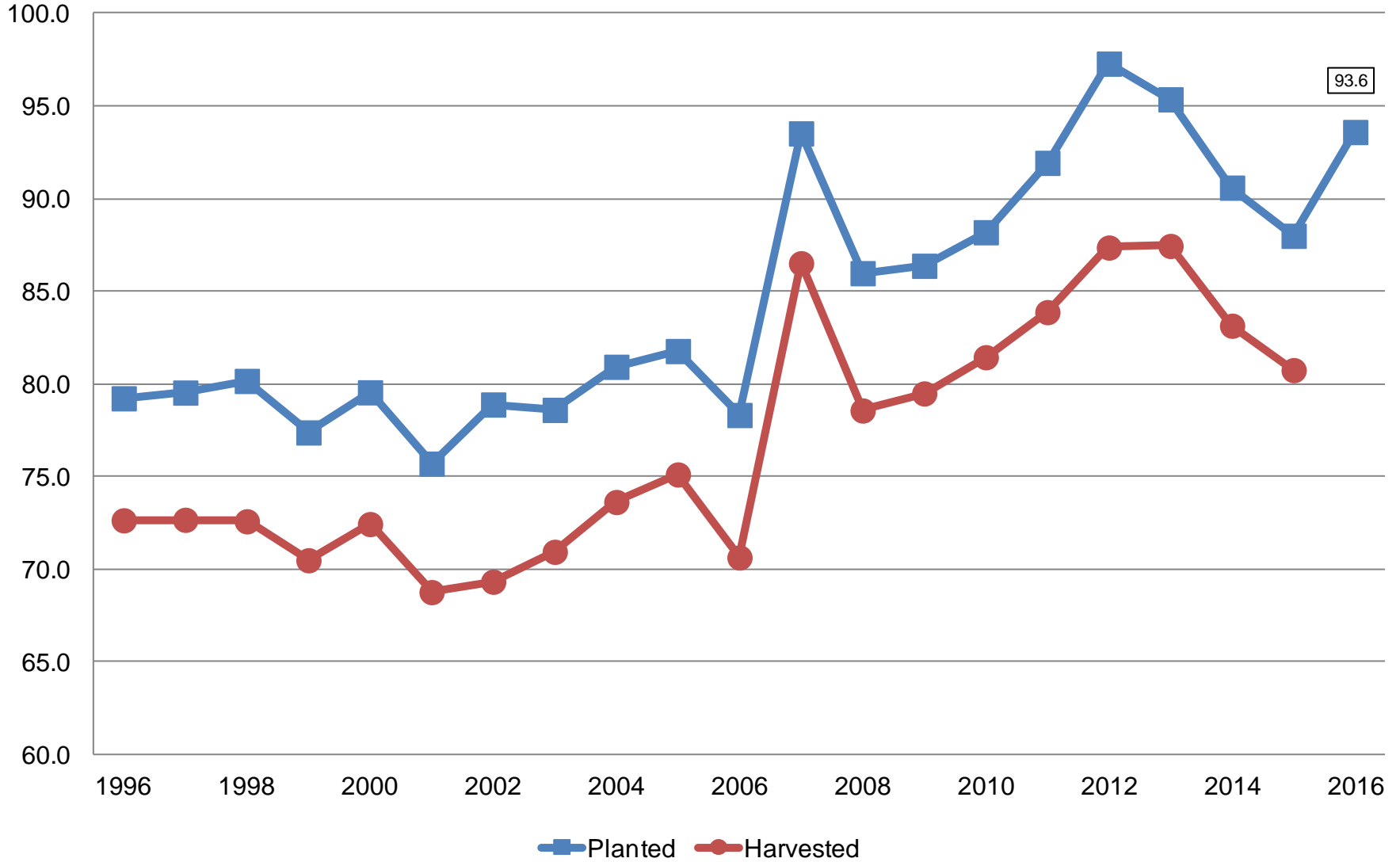
## 2016 Compared With 2015





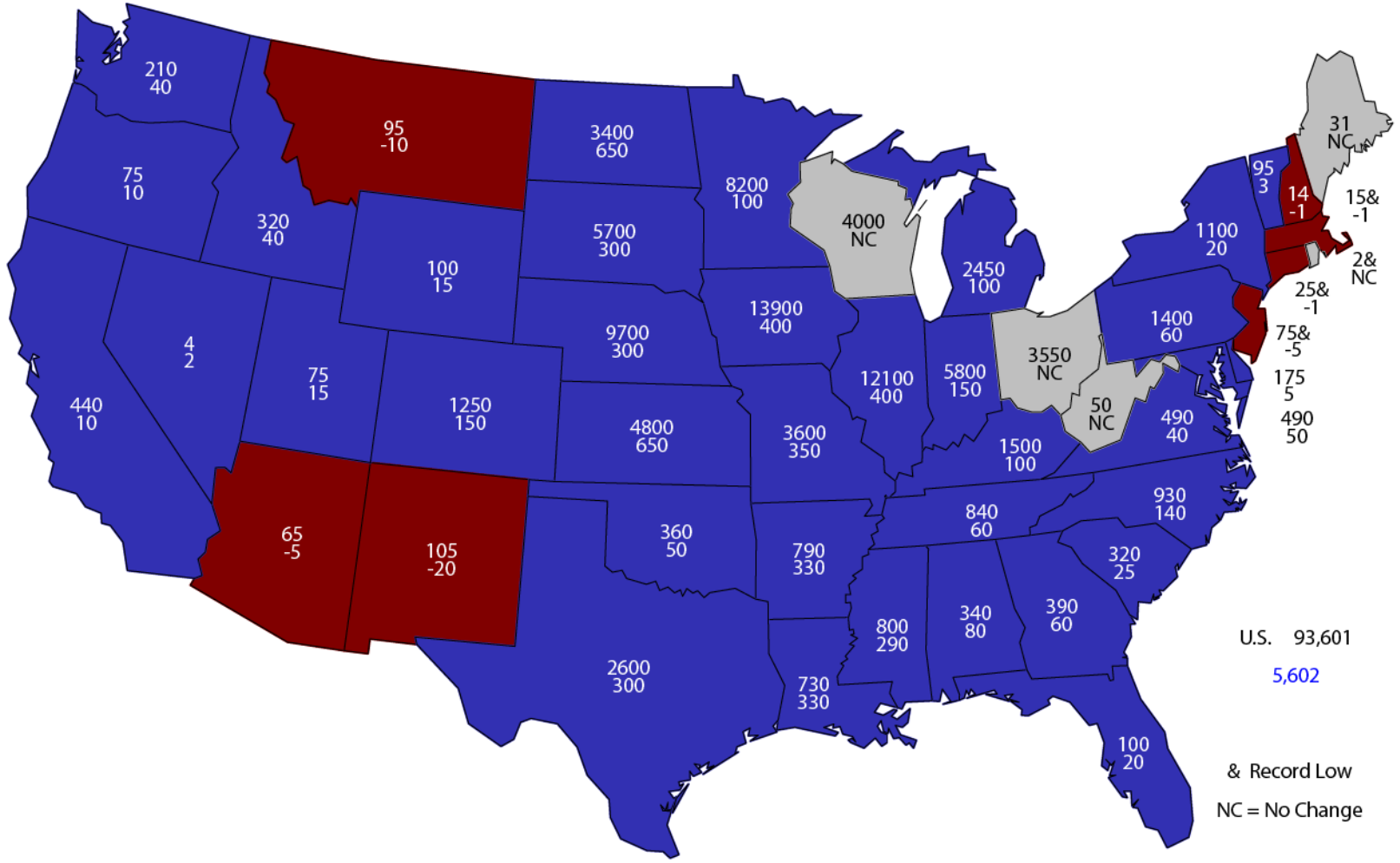
# Corn Acres United States

Million Acres



# 2016 Corn Planted Area

(000) Acres and Change From Previous Year

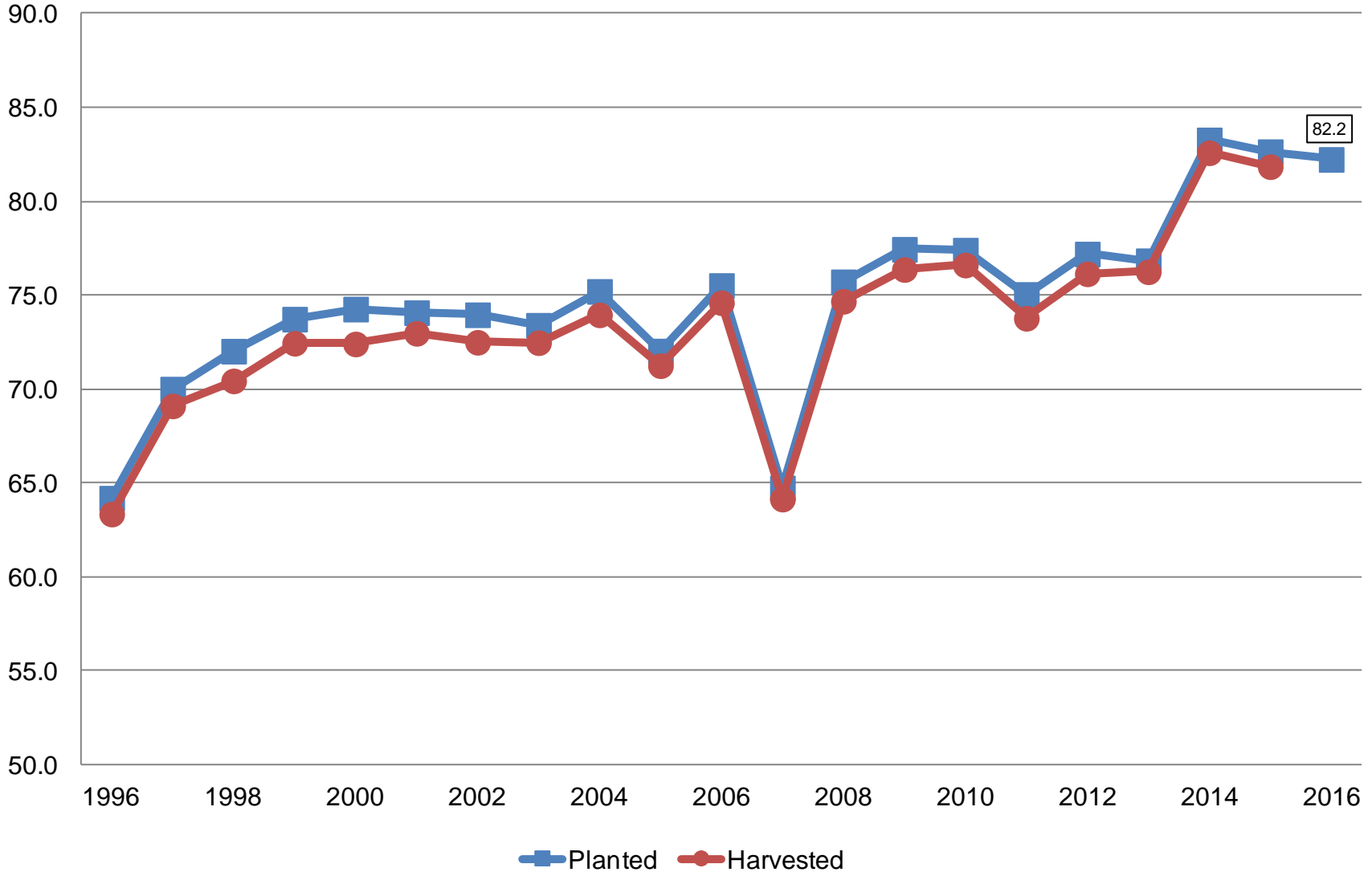


U.S. 93,601  
 5,602  
 & Record Low  
 NC = No Change



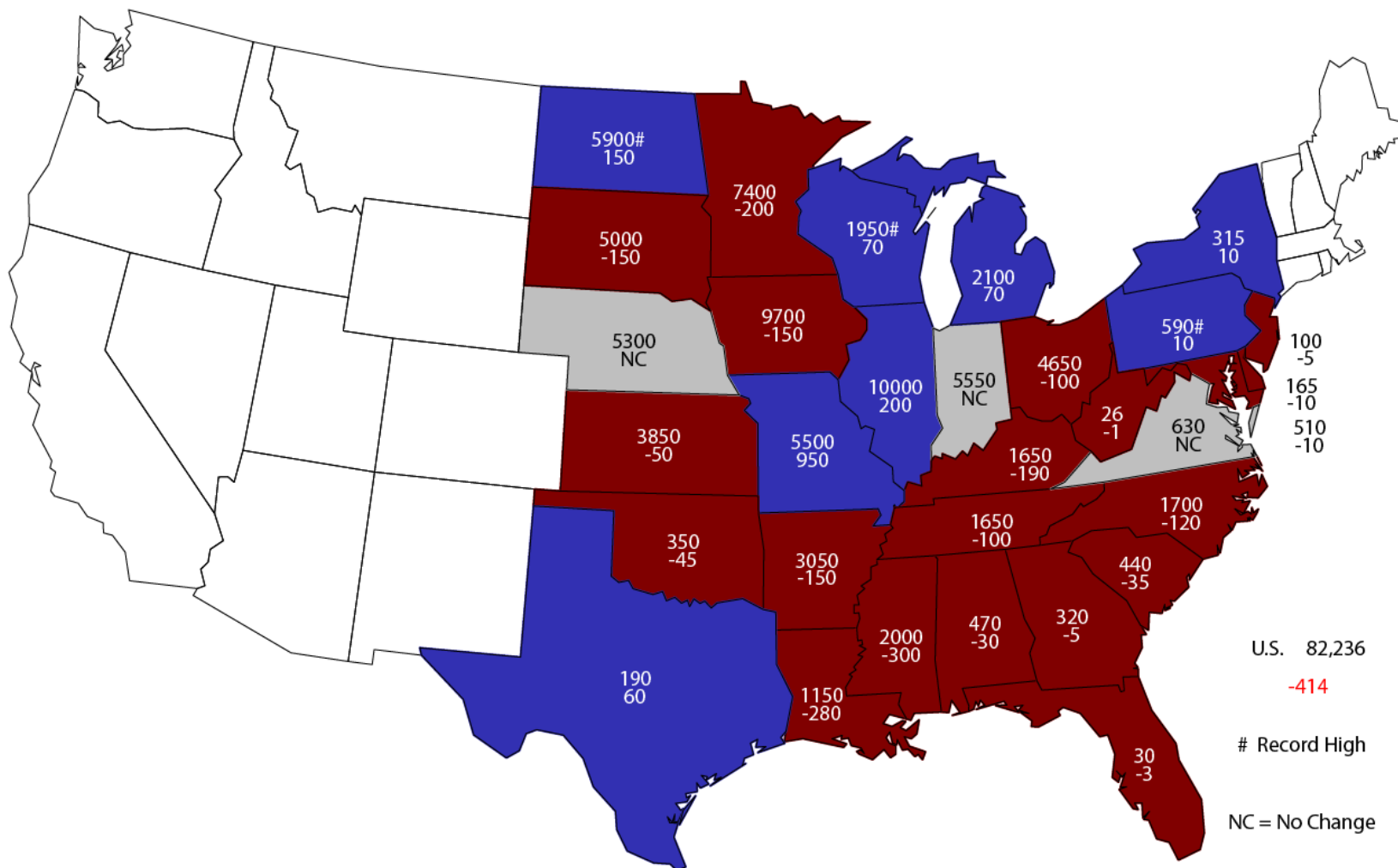
# Soybean Acres United States

Million Acres



# 2016 Soybean Planted Area

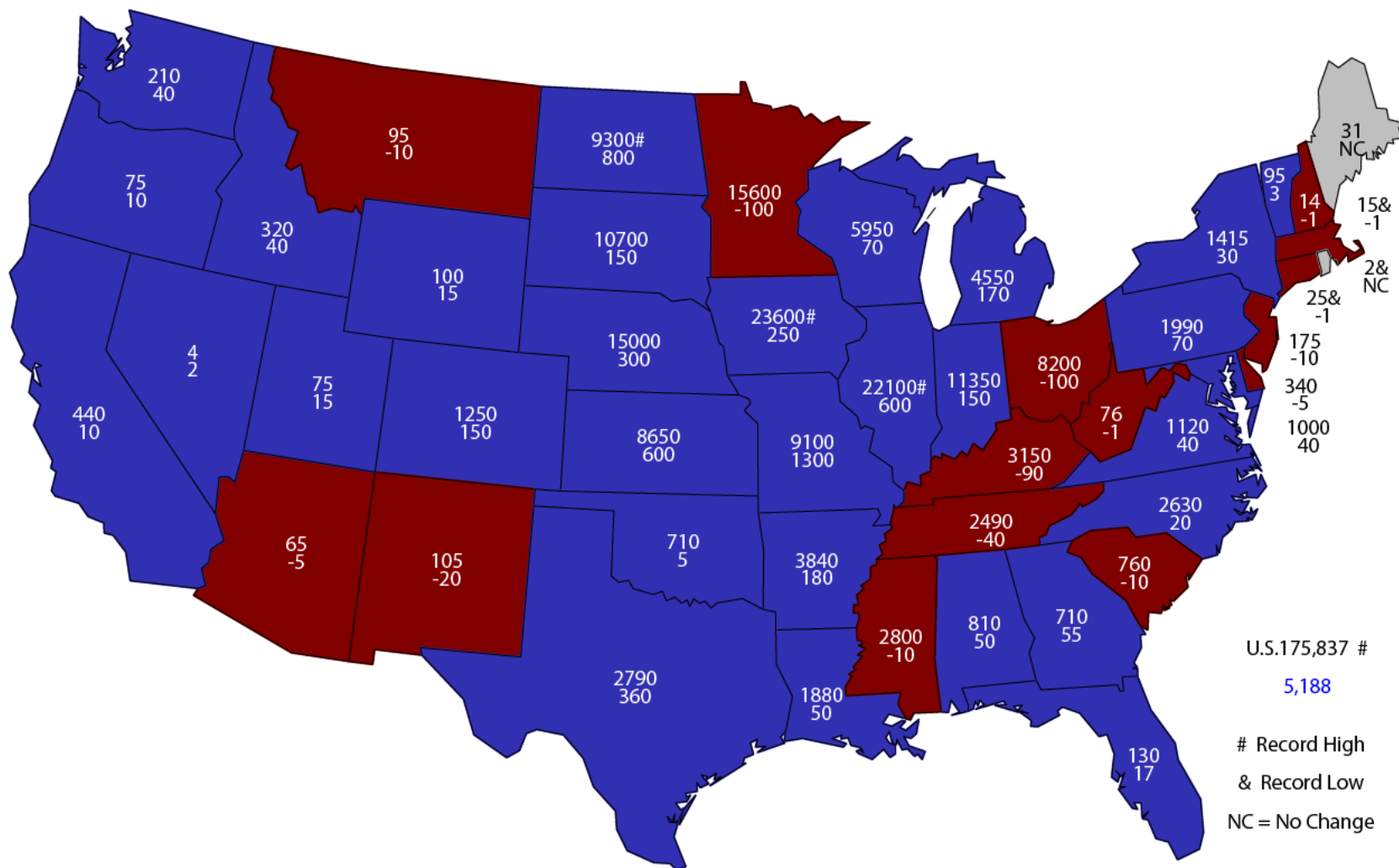
(000) Acres and Change From Previous Year



U.S. 82,236  
 -414  
 # Record High  
 NC = No Change

# 2016 Combined Corn & Soybean Planted Area

(000) Acres and Change From Previous Year

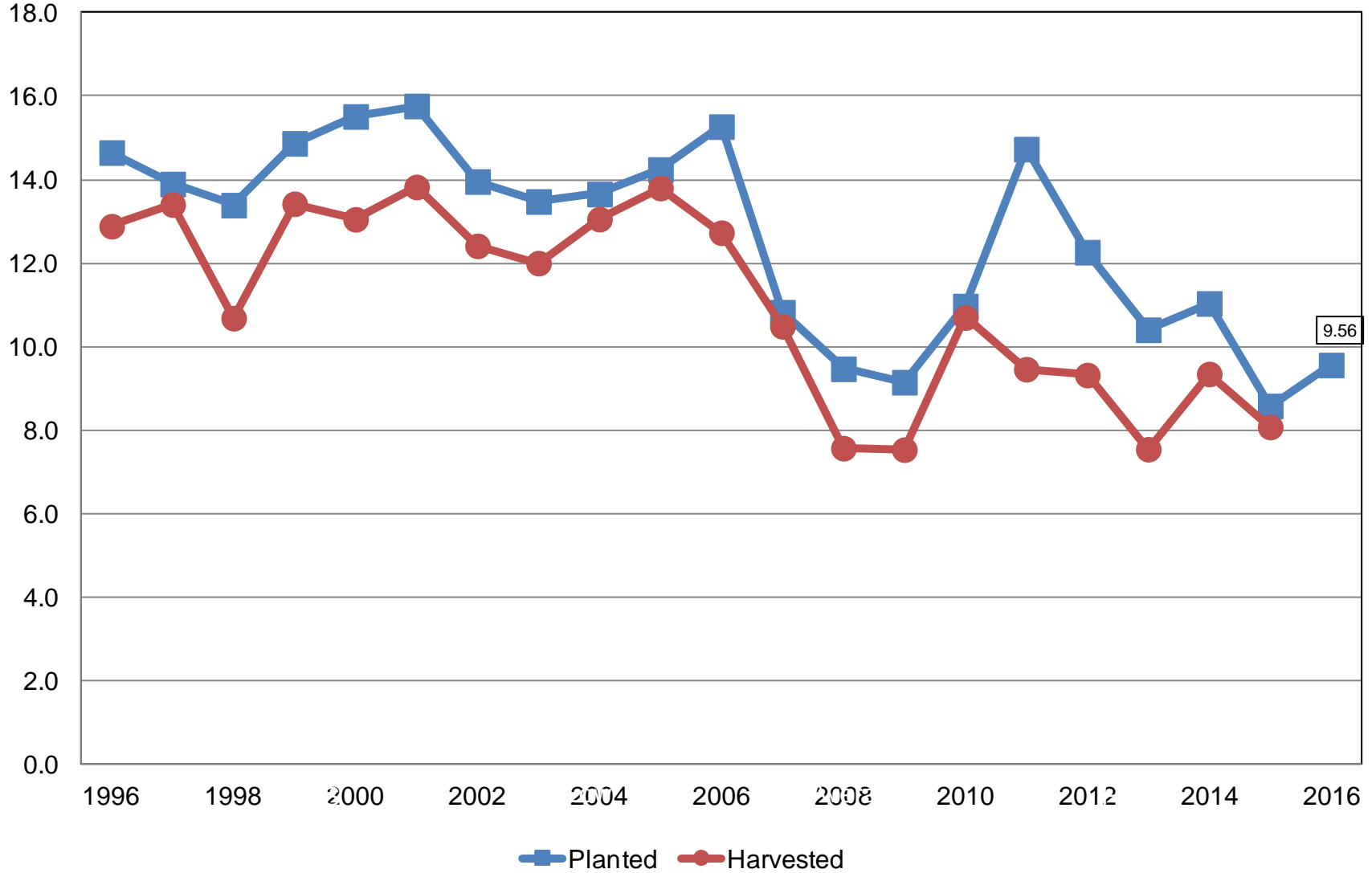


U.S. 175,837 #  
**5,188**  
 # Record High  
 & Record Low  
 NC = No Change



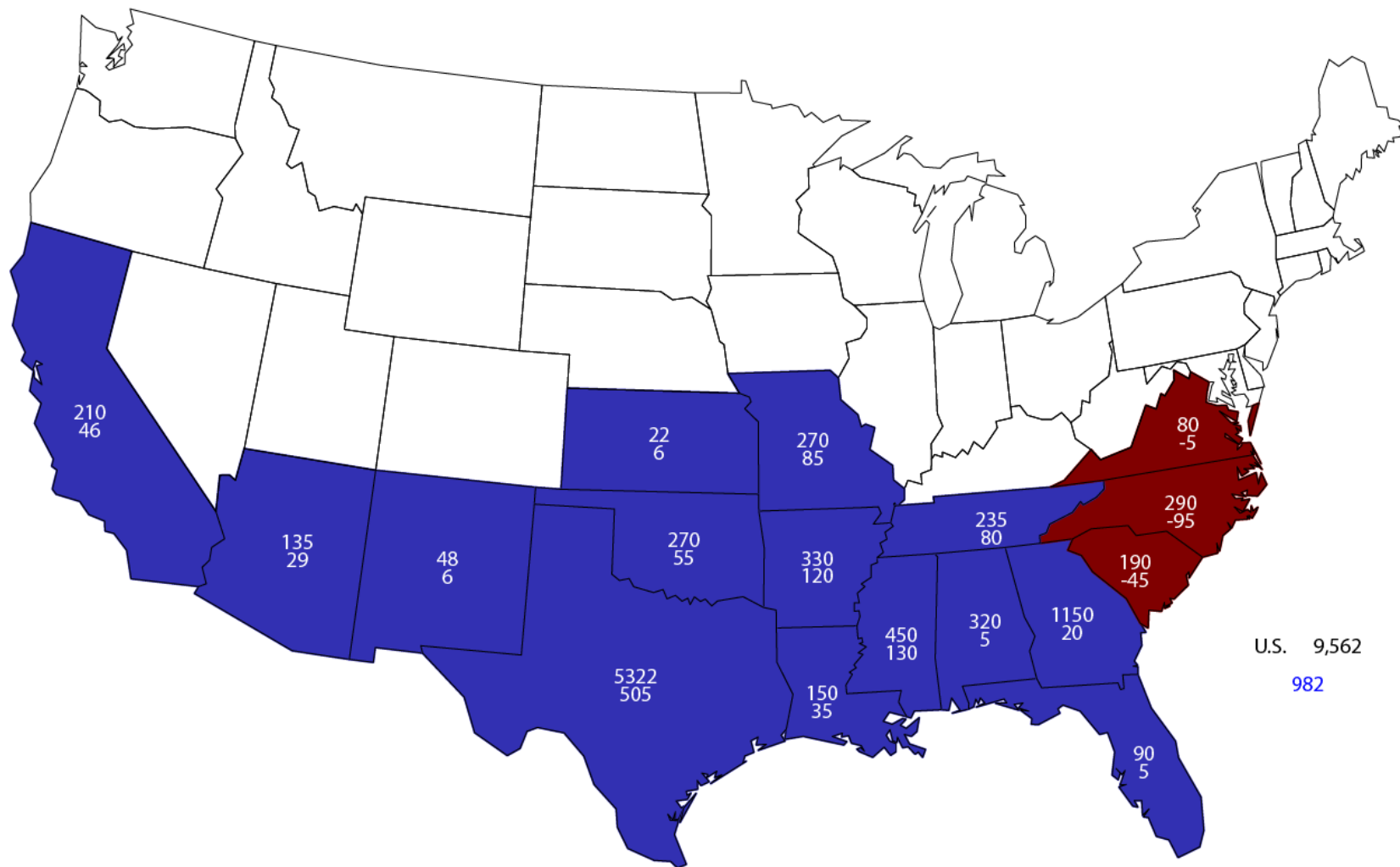
# All Cotton Acres United States

Million Acres



# 2016 All Cotton Planted Area

## Acres (000) and Change From Previous Year



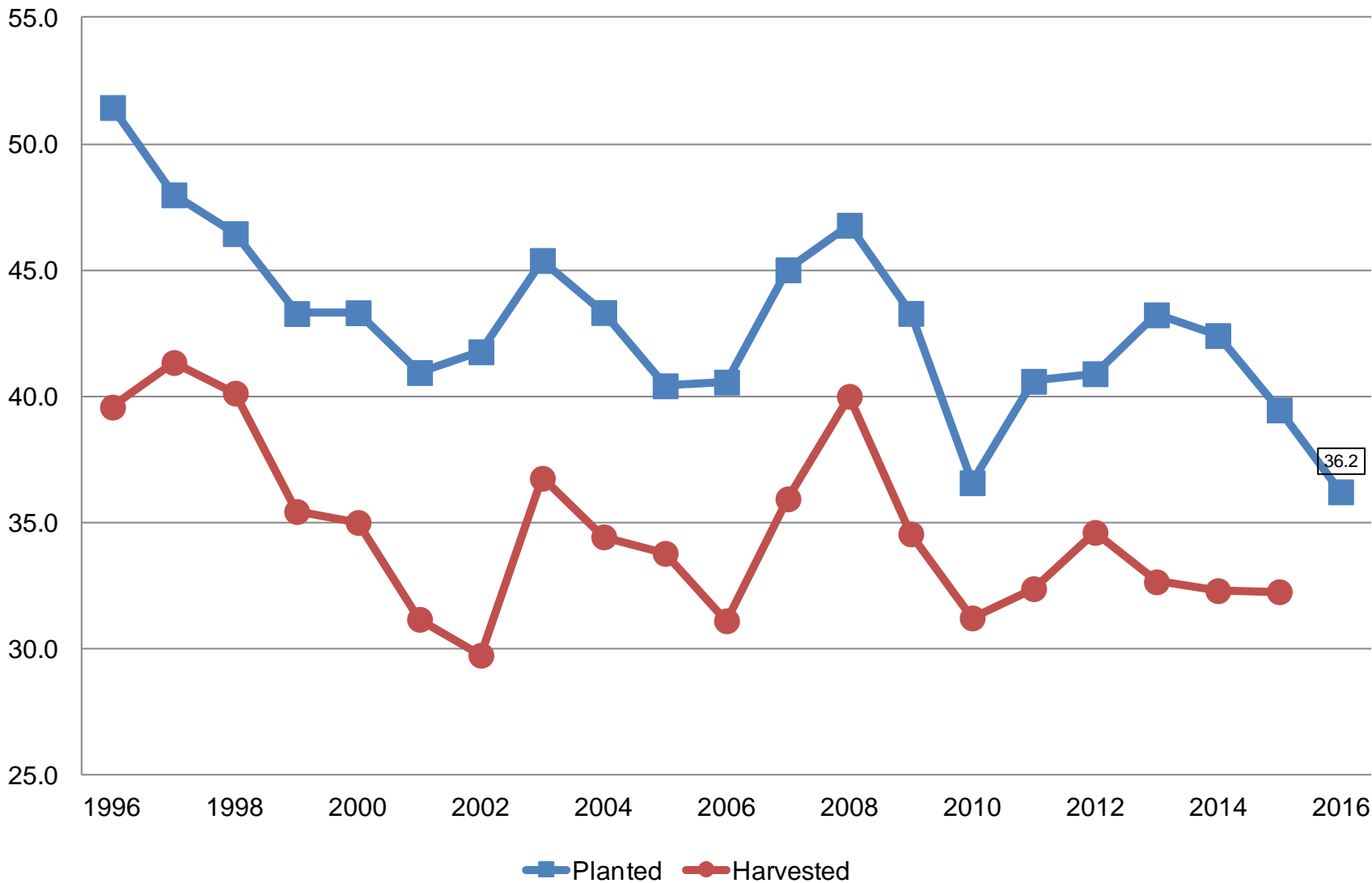




# Winter Wheat Acres

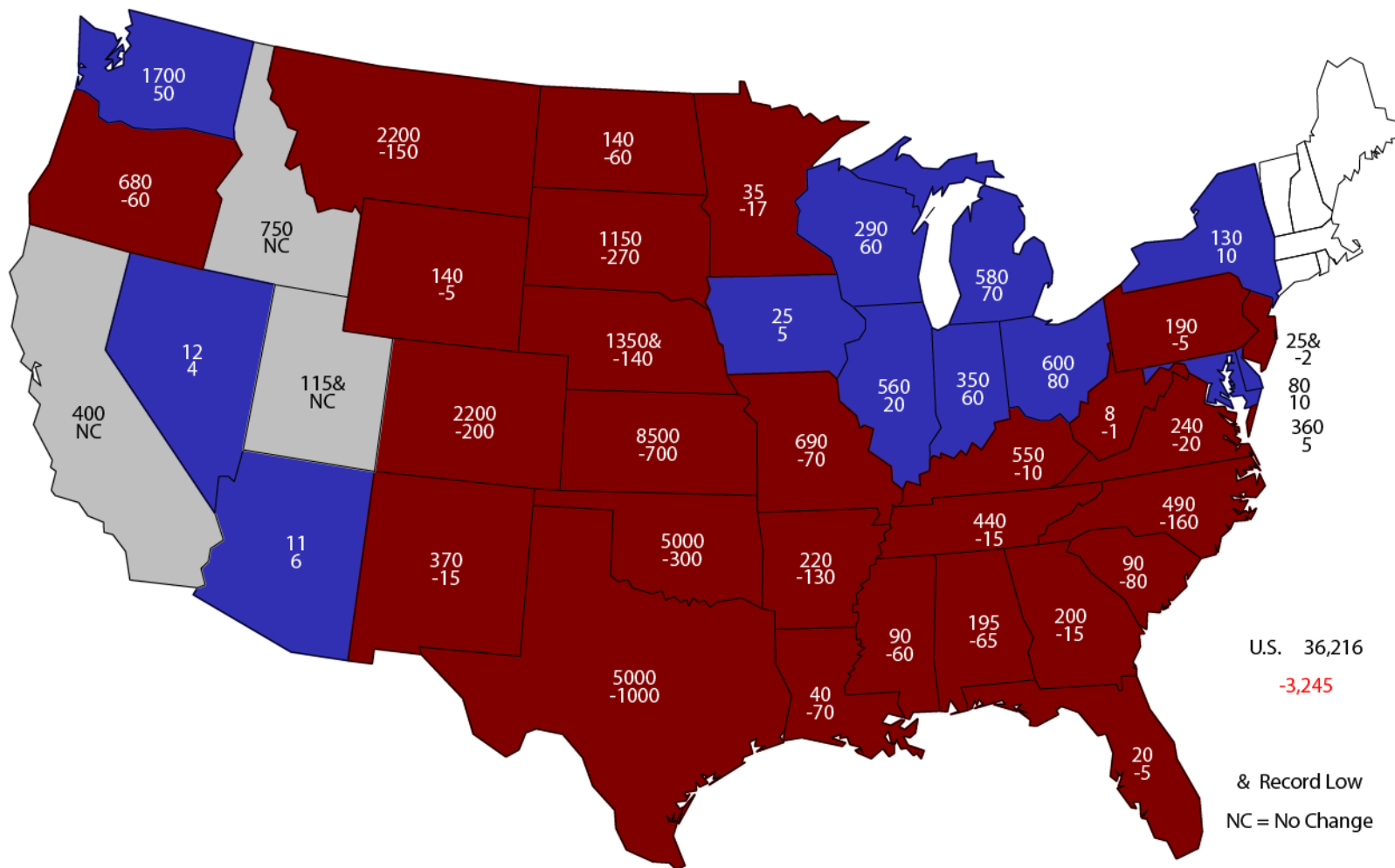
## United States

Million Acres



# 2016 Winter Wheat Planted Area

(000) Acres and Change From Previous Year



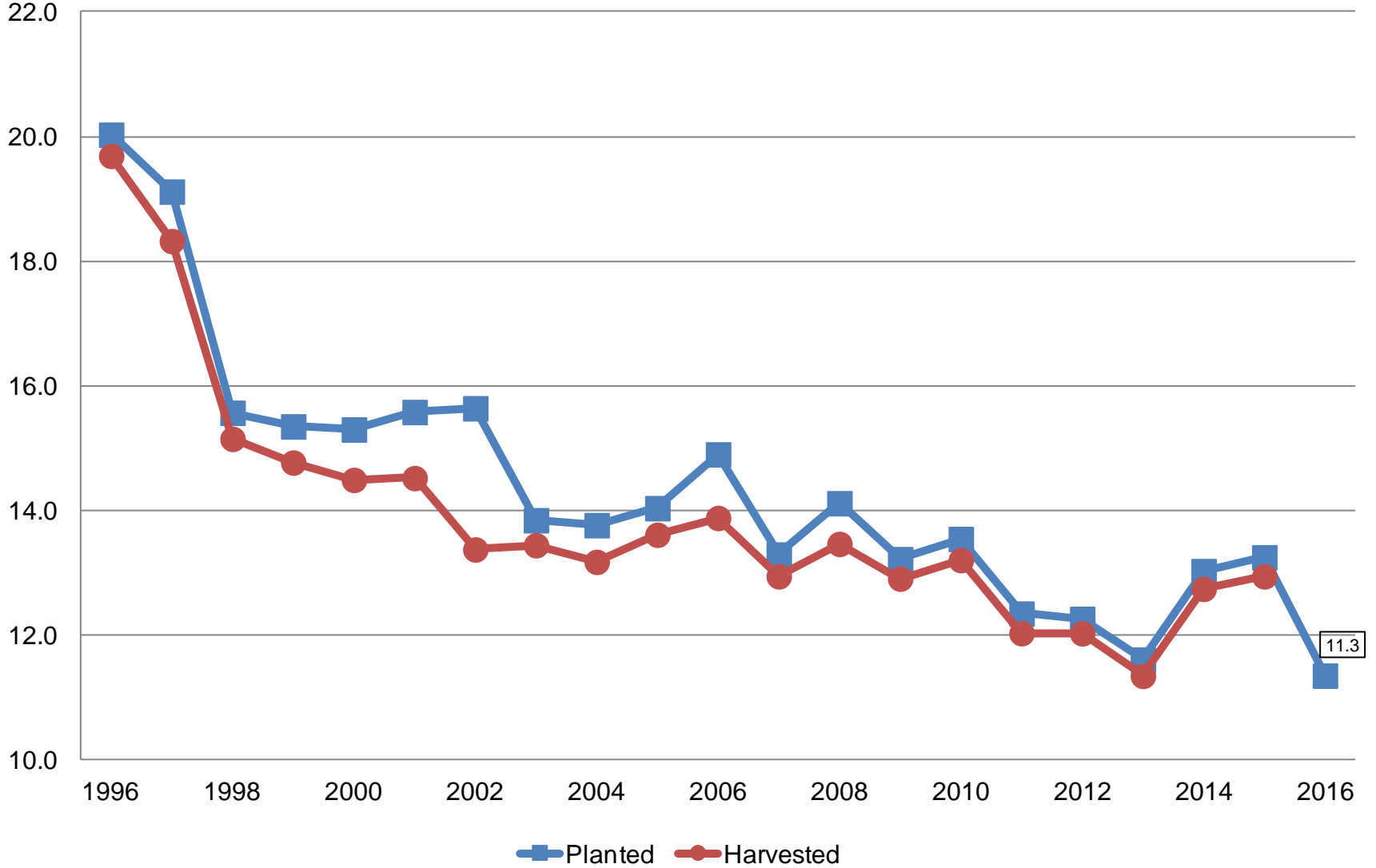
U.S. 36,216  
 -3,245  
 & Record Low  
 NC = No Change



# Other Spring Wheat Acres

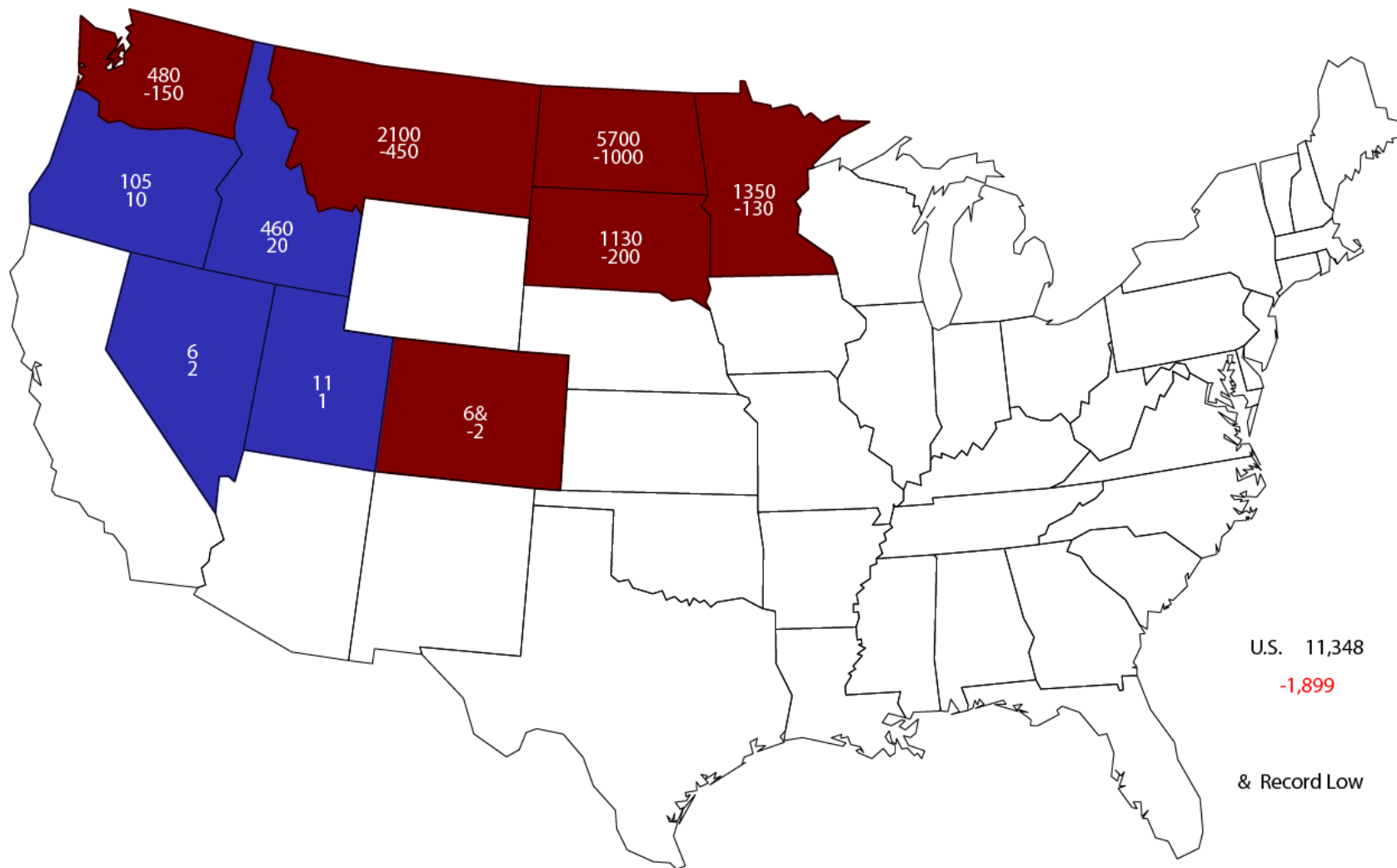
## United States

Million Acres



# 2016 Other Spring Wheat Planted Area

(000) Acres and Change From Previous Year



U.S. 11,348  
-1,899

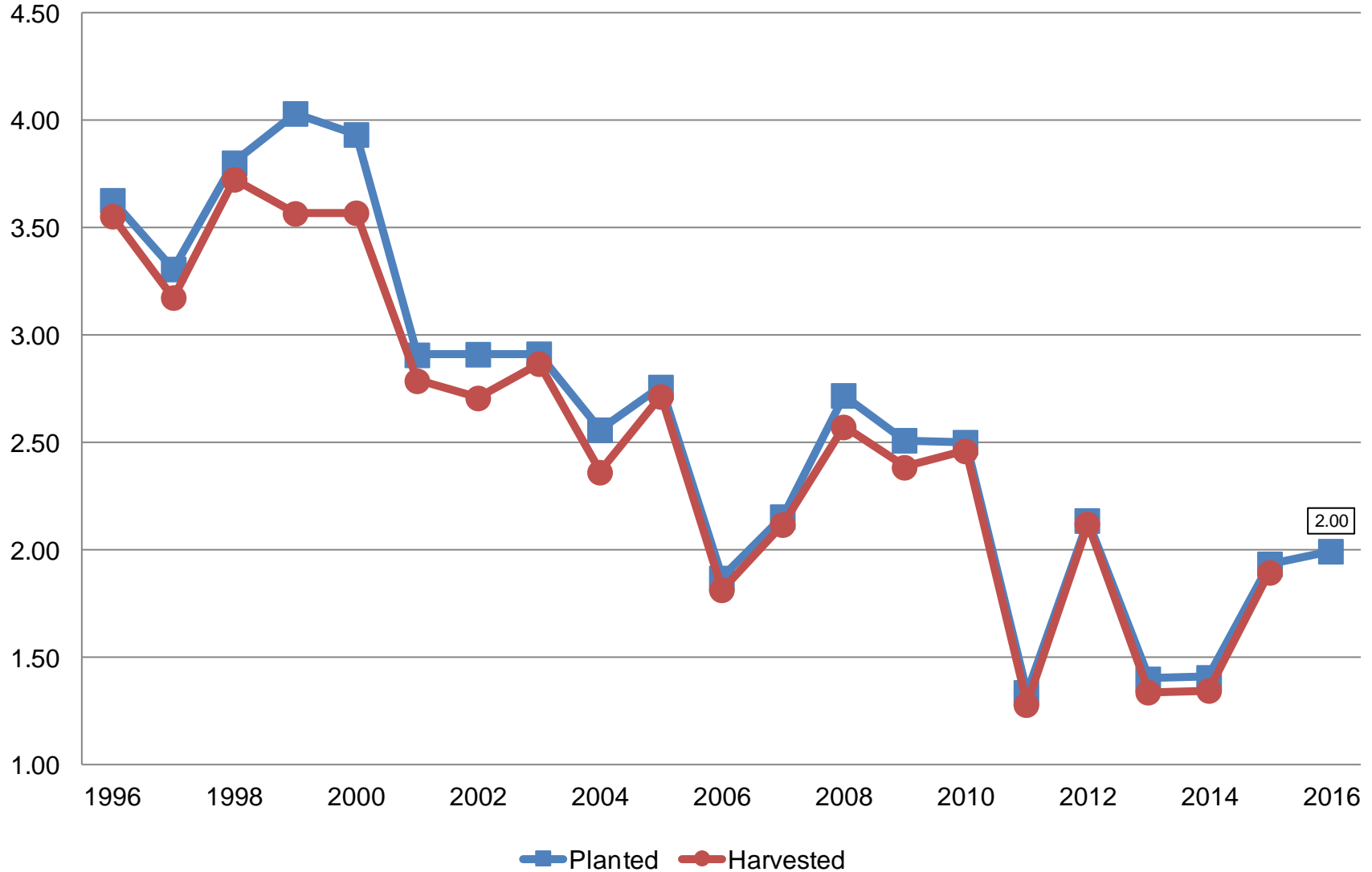
& Record Low



# Durum Wheat Acres

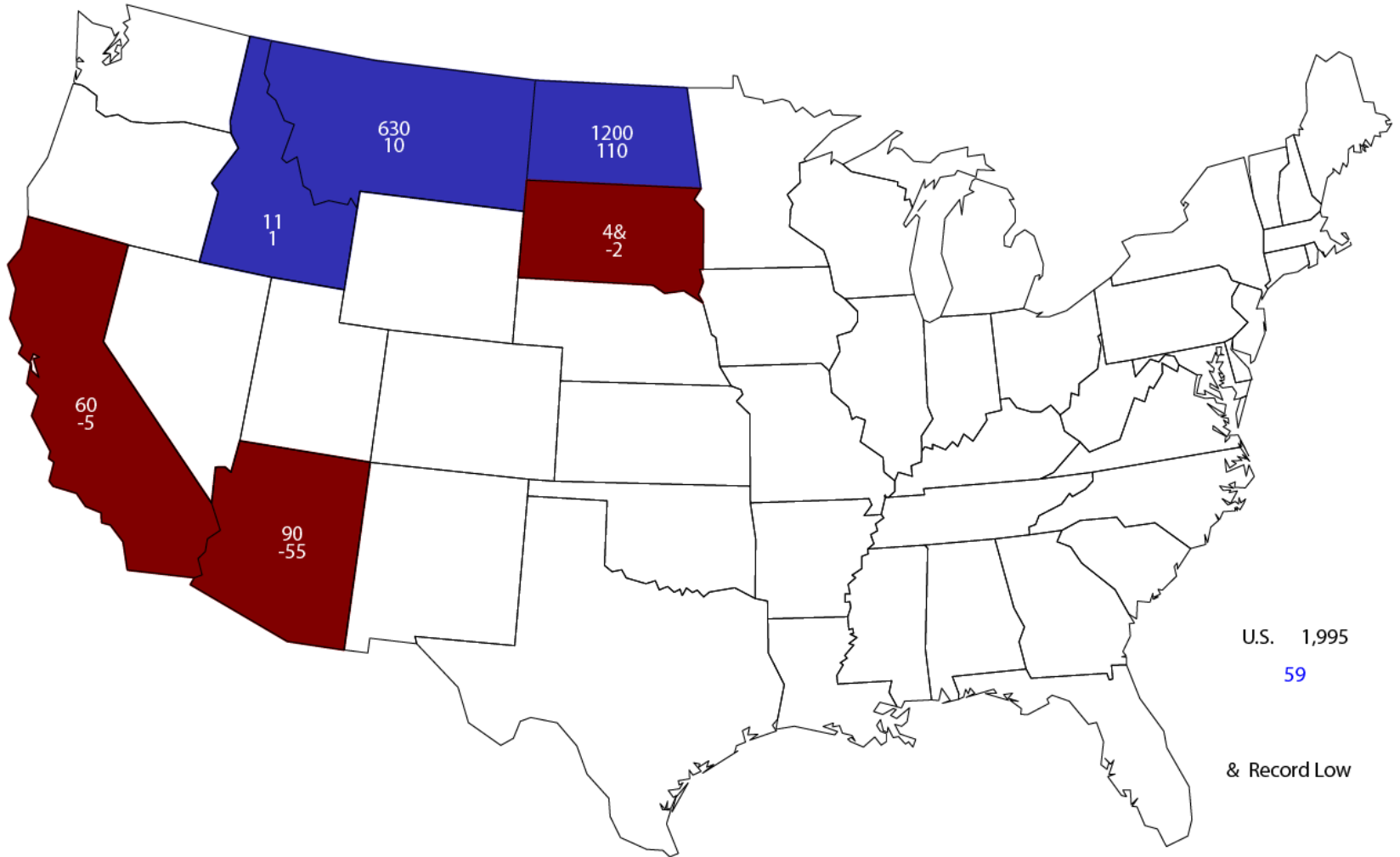
## United States

Million Acres





# 2016 Durum Wheat Planted Area (000) Acres and Change From Previous Year



U.S. 1,995  
59

& Record Low



# March 2016 Prospective Plantings

Crop	Unit	March 2016	% Change From Previous Forecast	% Change From Previous Season
Feed Grains				
Corn	Mil Ac	93.6	NA	+6.4
Sorghum	Mil Ac	7.22	NA	-14.7
Oats	Mil Ac	2.75	NA	-10.9
Barley	Mil Ac	3.14	NA	-11.7



# March 2016 Prospective Plantings

Crop	Unit	March 2016	% Change From Previous Forecast	% Change From Previous Season
Food Grains				
Wheat, All	Mil Ac	49.6	NA	-9.3
Wheat, Winter	Mil Ac	36.2	-1.1	-8.2
Wheat, Spring	Mil Ac	11.3	NA	-14.3
Wheat, Durum	Mil Ac	2.00	NA	+3.0
Rice	Mil Ac	3.06	NA	+17.2





# March 2016 Prospective Plantings

Crop	Unit	March 2016	% Change From Previous Forecast	% Change From Previous Season
Oilseeds				
Soybeans	Mil Ac	82.2	NA	-0.5
Peanuts	Mil Ac	1.48	NA	-9.2
Sunflower	Mil Ac	1.69	NA	-8.9
Canola	Mil Ac	1.75	NA	-1.7
Flaxseed	Thou Ac	390	NA	-15.8
All Cotton	Mil Ac	9.56	NA	+11.4



# March 2016 Prospective Plantings

Crop	Unit	March 2016	% Change From Previous Forecast	% Change From Previous Season
Other Crops				
All Hay	Mil Ac	54.3	NA	-0.2
Sugarbeets	Mil Ac	1.16	NA	<0.1
Tobacco	Thou Ac	314	NA	-3.7
Spring Potatoes	Thou Ac	55.0	NA	-21.5
Dry Edible Beans	Mil Ac	1.56	NA	-11.6
Chickpeas	Thou Ac	246	NA	+18.6
Lentils	Thou Ac	850	NA	+72.4
Dry Edible Peas	Mil Ac	1.42	NA	+24.5
A. Winter Peas	Thou Ac	31.0	NA	-8.8
Sweet Potatoes	Thou Ac	169	NA	+8.0



# March 2016 Grain Stocks

Crop	Unit	March 2016	% Change From Previous Estimate	% Change From Previous Year
Stocks				
Corn	Bil Bu	7.81	NA	+0.8
Soybeans	Bil Bu	1.53	NA	+15.4
Sorghum	Mil Bu	201	NA	+67.5
Rice	Mil Cwt	108	NA	-4.1

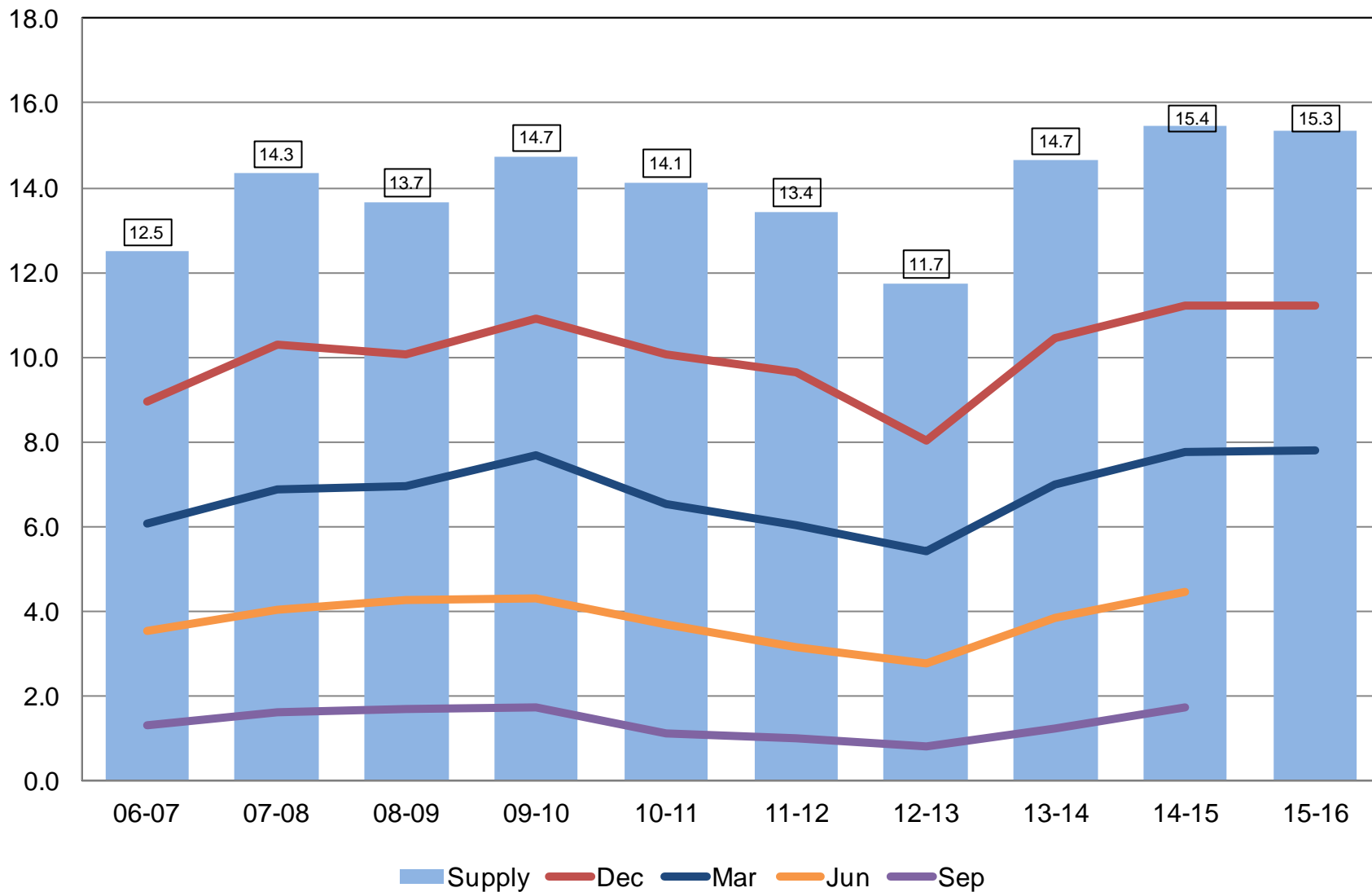


# March 2016 Grain Stocks

Crop	Unit	March 2016	% Change From Previous Estimate	% Change From Previous Year
Stocks				
Wheat, All	Bil Bu	1.37	NA	+20.3
Barley	Mil Bu	137	NA	+16.0
Oats	Mil Bu	75.3	NA	+26.7

# Corn Stocks United States

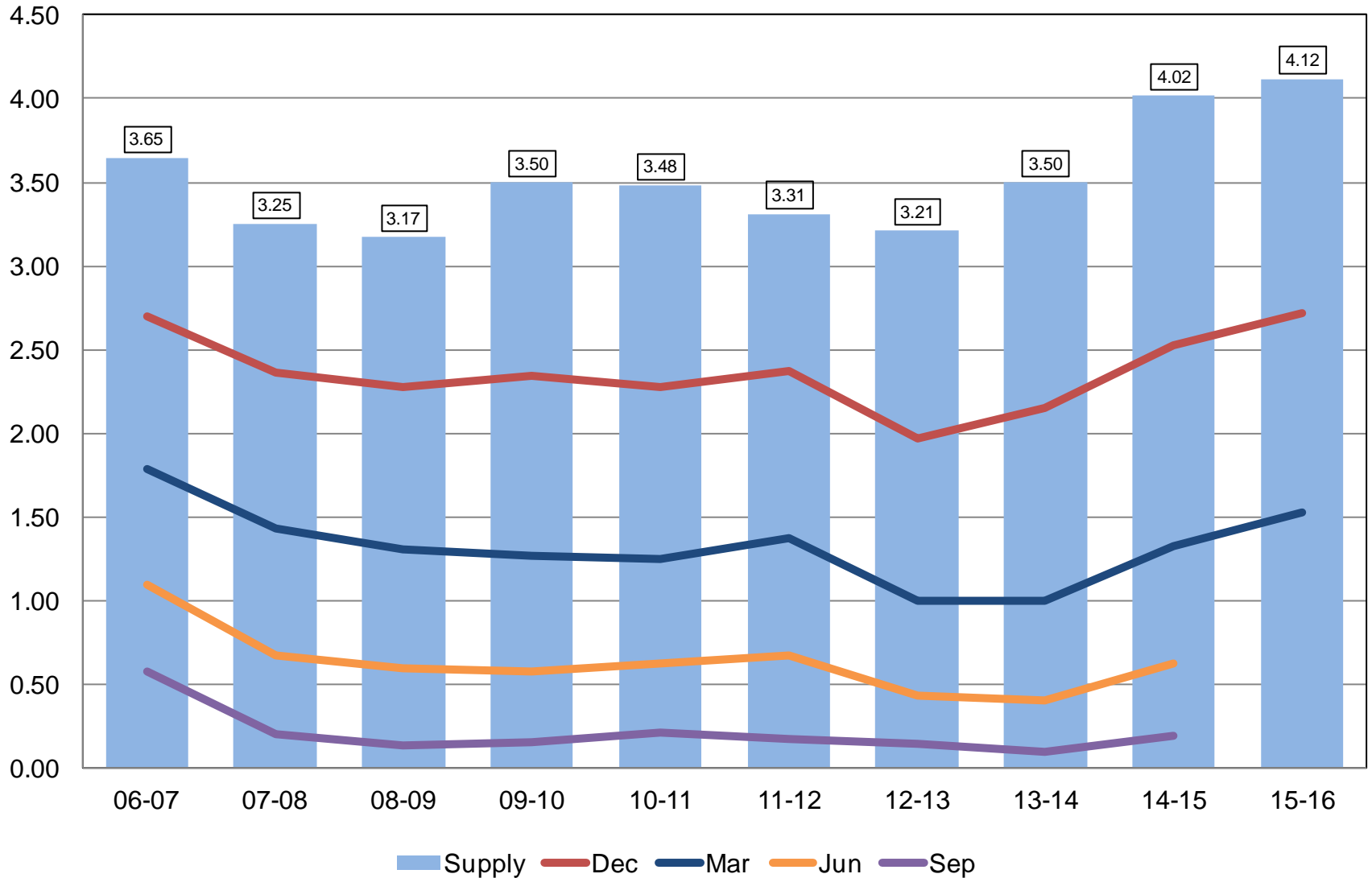
Billion Bushels





# Soybean Stocks United States

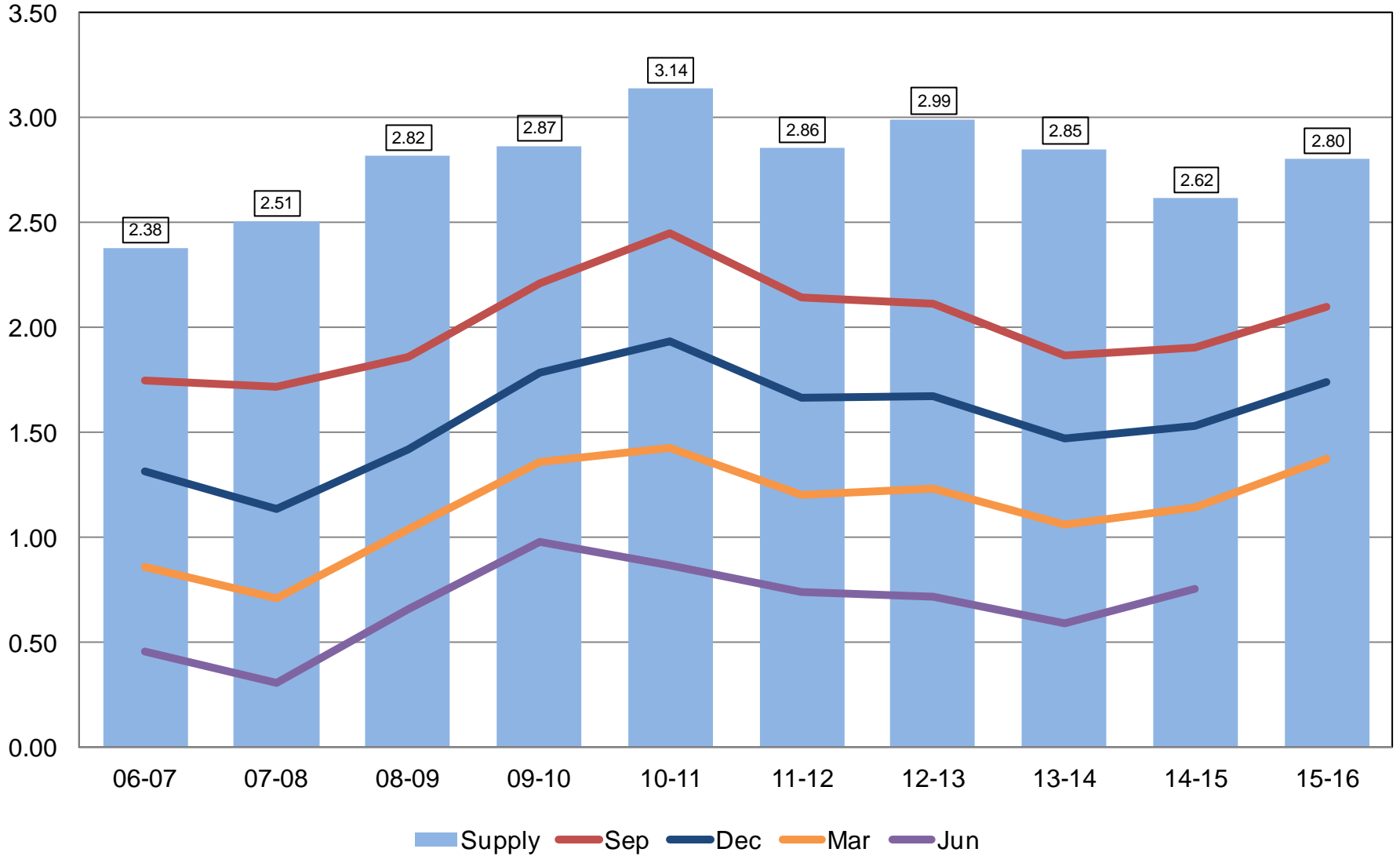
Billion Bushels





# All Wheat Stocks United States

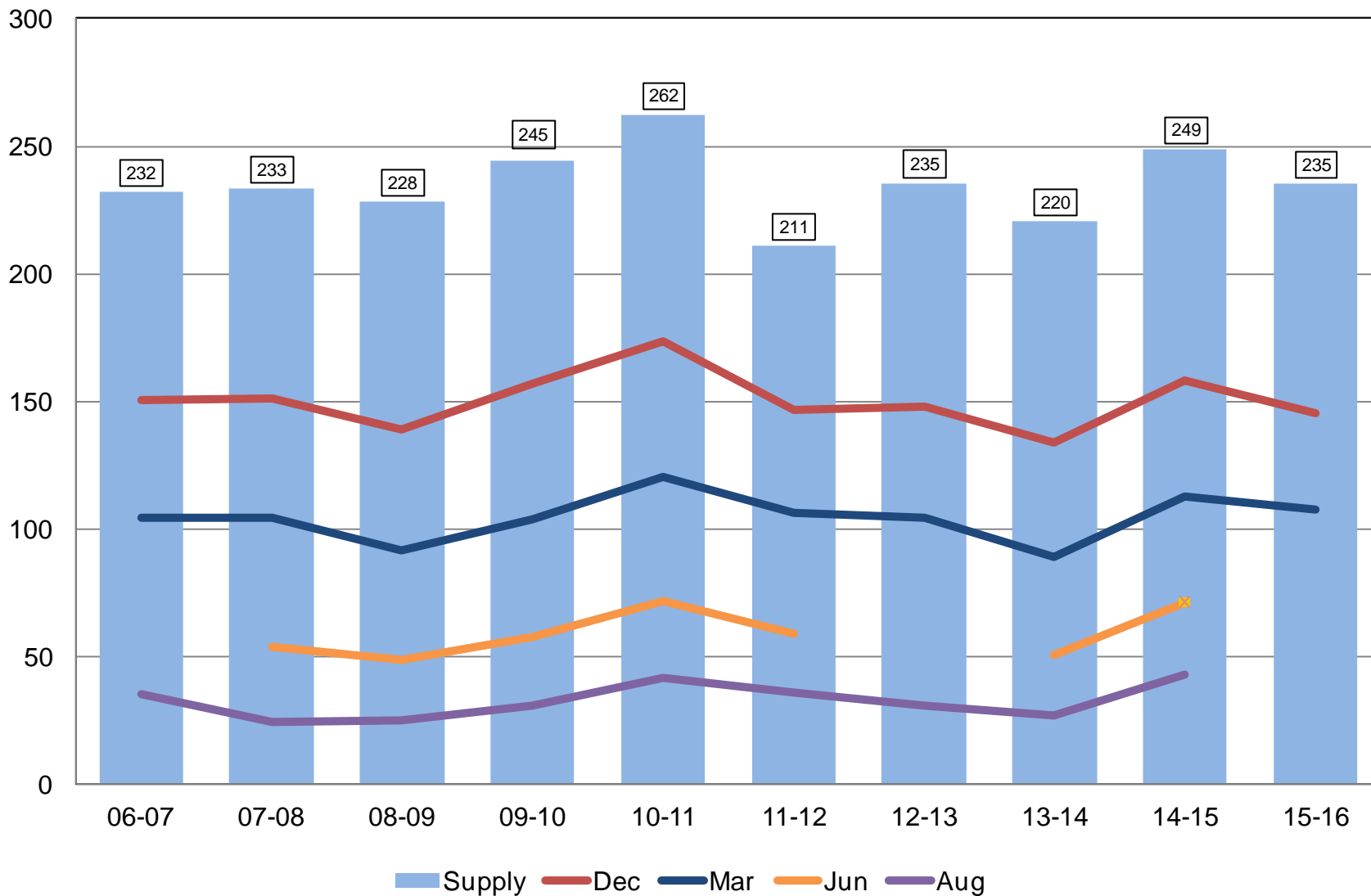
Billion Bushels





# Rough Rice Stocks United States

Million Hundredweight







# STAT CHAT SERIES

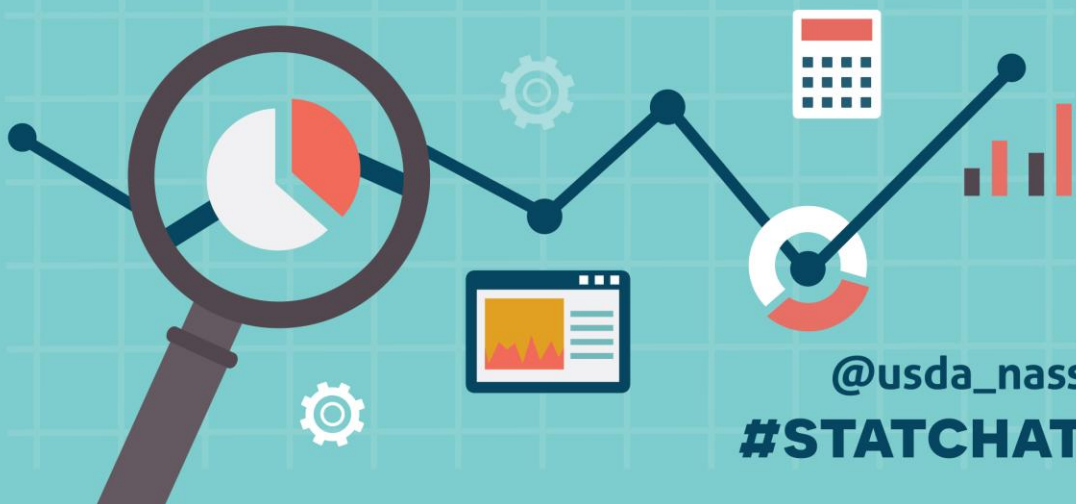
Join USDA-NASS on Twitter, using **#StatChat**, on Thursday, March 31 at 1 p.m. ET for our monthly chat.

Lance Honig will answer your questions about the *Prospective Plantings* report.

You can tweet questions in advance **@usda\_nass**.



**THU, MAR 31 @ 1PM ET**



**@usda\_nass**

**#STATCHAT**



# Upcoming Reports

Release Date	Report Title
April 1	CAIR: Cotton System CAIR: Fats & Oils CAIR: Grain Crushings
April 12	Crop Production
April 22	Cattle on Feed
April 29	Agricultural Prices
May 2	CAIR: Cotton System CAIR: Fats & Oil CAIR: Flour Milling CAIR: Flour Milling- Annual CAIR: Grain Crushings



United States Department of Agriculture  
**National Agricultural Statistics Service**

---

---

**All Reports Available At**  
[www.nass.usda.gov](http://www.nass.usda.gov)

**For Questions**  
202-720-2127  
800-727-9540  
[nass@nass.usda.gov](mailto:nass@nass.usda.gov)