



United States Department of Agriculture
National Agricultural Statistics Service

October Crop Production
Executive Summary

Lance Honig, Chief
Crops Branch



Contents

Field Crops	Fruit & Nuts	Specialty Crops
Corn	Citrus	Dry Beans
Soybeans	Pecans	Tobacco
Cotton		Sugarbeets
Rice		Sugarcane
Peanuts		
Sorghum		
Alfalfa Hay		
Other Hay		
Canola		
Sunflowers		

Survey Overview

Florida Citrus

	Tree Inventory	Limb Count	Objective Surveys (Size and Drop)	Fruit Maturity
Survey Type	Field Staff Observations	Field Staff Observations	Field Staff Observations	Laboratory Tests
Crops Included	Oranges, Grapefruit, Tangerines, Tangelos	Oranges, Grapefruit, Tangerines, Tangelos	Oranges, Grapefruit, Tangerines, Tangelos	Oranges (excluding Navels), Grapefruit
Sample Size	291,069 acres	3,263 groves (2 trees per grove)	1,785 groves (1,462 are oranges)	425 samples (325 are oranges)
Collection Period	September 2014 - July 2015	July 13 – September 18	2 surveys July 16 - September 25	September 28-29

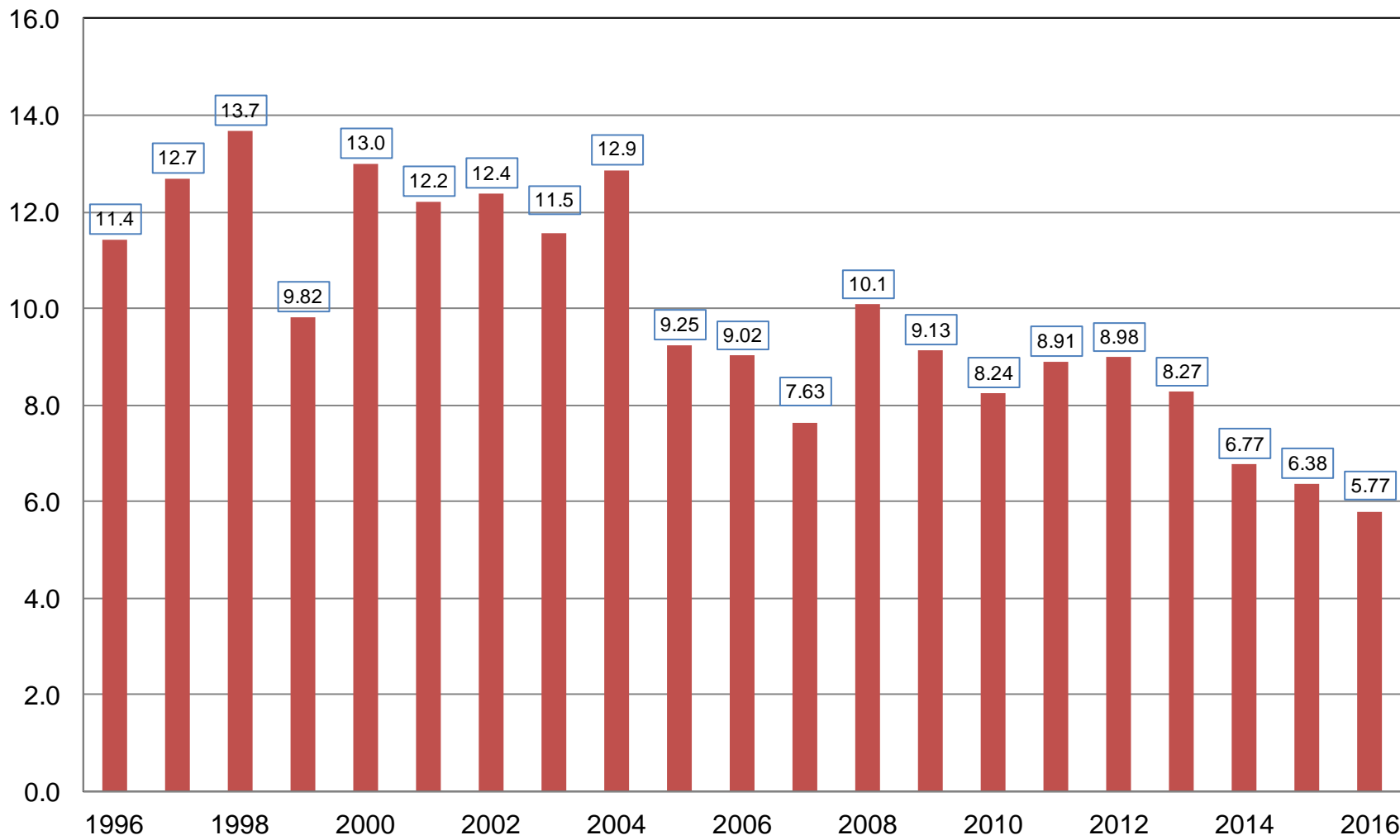


October 2015 Crop Production

Crop	Unit	October 2015	% Change From Previous Forecast	% Change From Previous Season
Production				
Oranges	Mil Tons	5.77	NA	-9.5
Grapefruit	Thou Tons	823	NA	-5.4
Lemons	Thou Tons	844	NA	-6.2
Tangelos	Thou Tons	20.3	NA	-33.8
Tangerines & Mandarins	Thou Tons	843	NA	NC

Orange Production United States

Million Tons





Survey Overview

	Ag Yield	Objective Yield
Survey Type	Farmer Reported	Field Measurement
Crops Included	Field Crops	Corn, Cotton, Soybeans
Sample Size	11,948	4,972
Collection Period	Sept 26 – Oct 5	Sept 24 – Oct 1



October 2015 Crop Production

Crop	Unit	October 2015	% Change From Previous Estimate	% Change From Previous Season
Planted Area				
Corn	Mil Ac	88.4	-0.6	-2.4
Soybeans	Mil Ac	83.2	-1.3	-0.1
Sorghum	Mil Ac	8.65	-1.0	+21.2
Sunflowers	Mil Ac	1.86	+10.5	+19.1
Canola	Mil Ac	1.79	+13.8	+4.3
Dry Edible Beans	Mil Ac	1.76	+0.3	+2.2



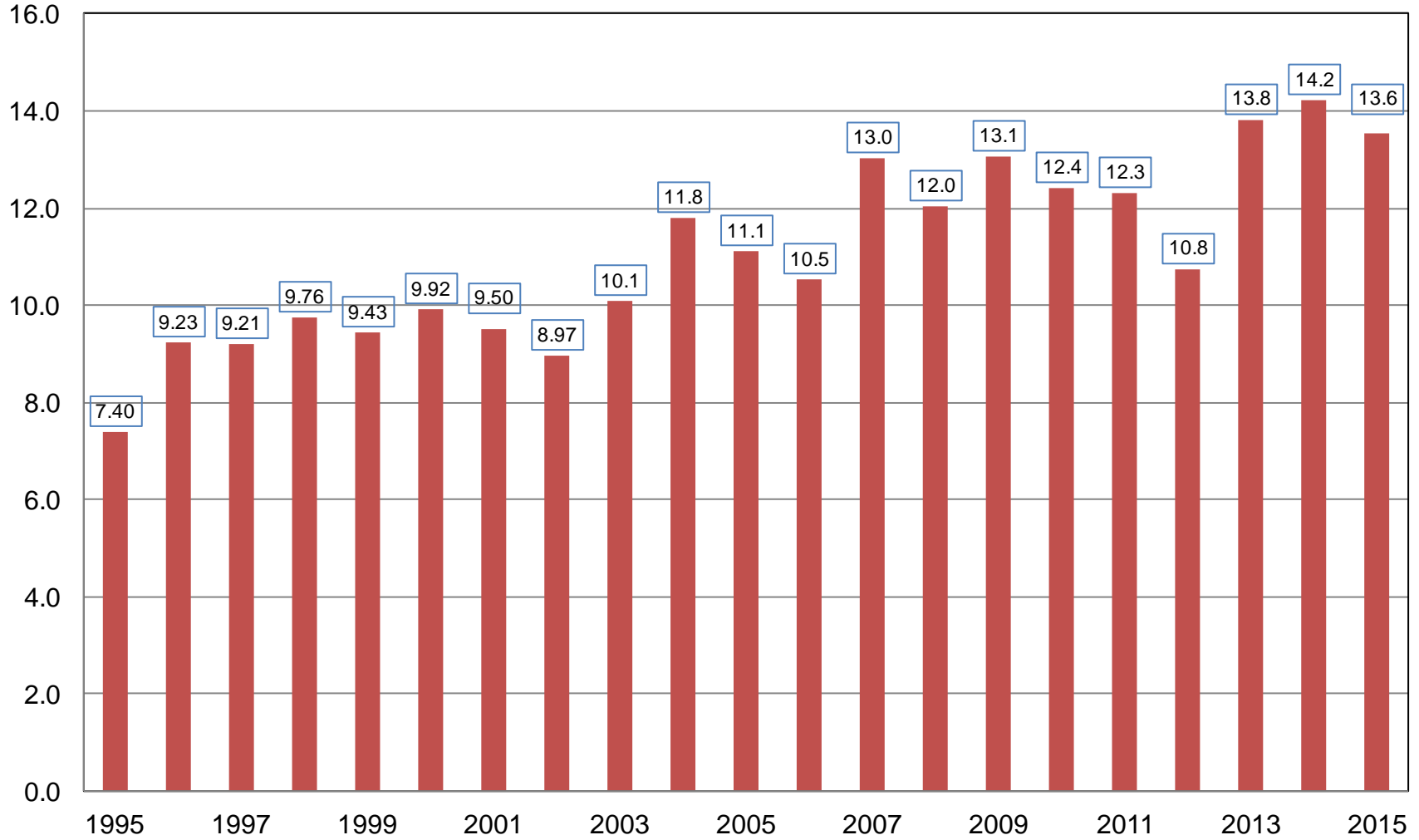
October 2015 Crop Production

Crop	Unit	October 2015	% Change From Previous Forecast	% Change From Previous Season
Corn				
Harvested	Mil Ac	80.7	-0.5	-3.0
Yield	Bu/Ac	168	+0.3	-1.8
Production	Bil Bu	13.6	-0.2	-4.6



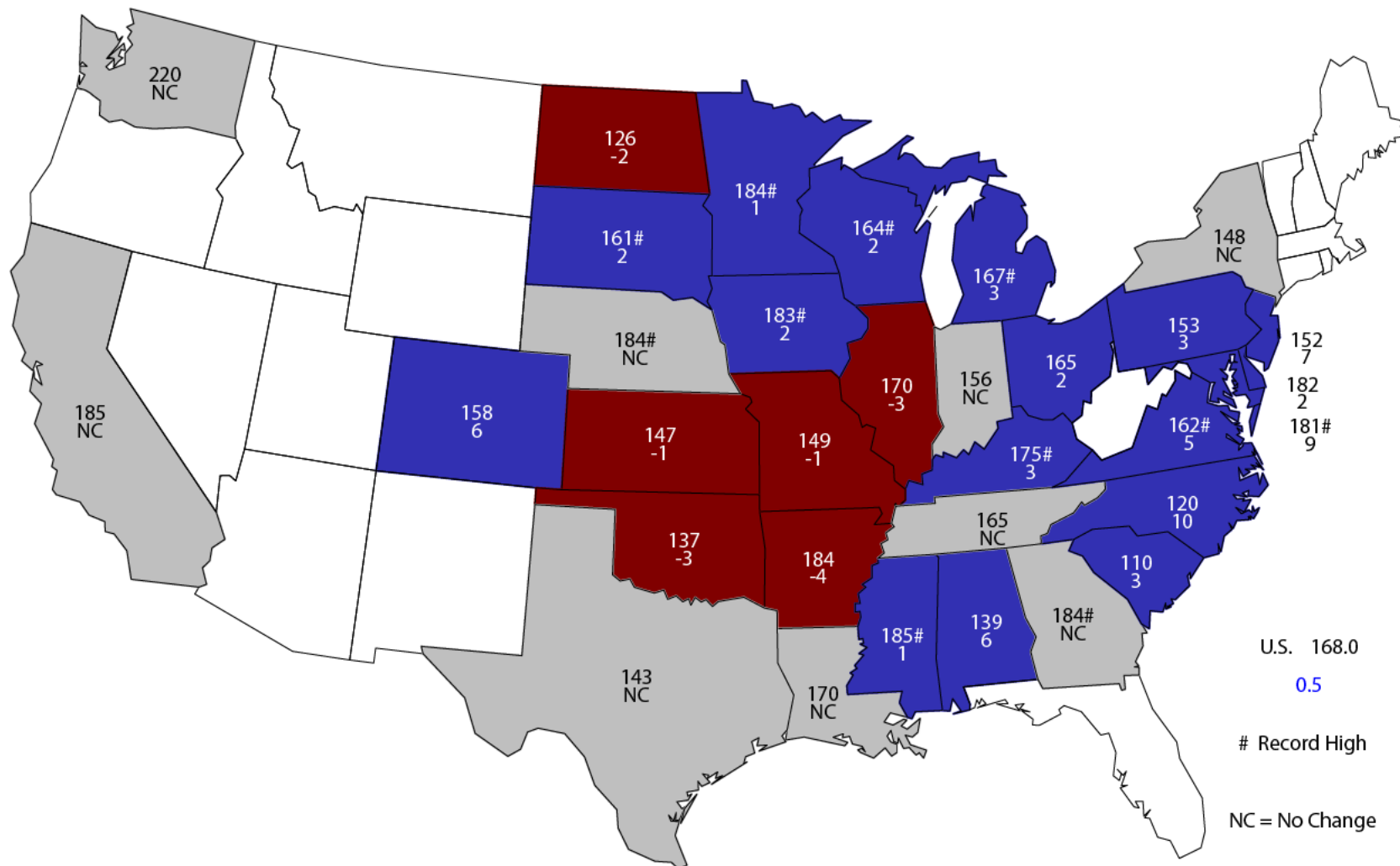
Corn for Grain Production United States

Billion Bushels



October 1, 2015 Corn Yield

Bushels and Change From Previous Month



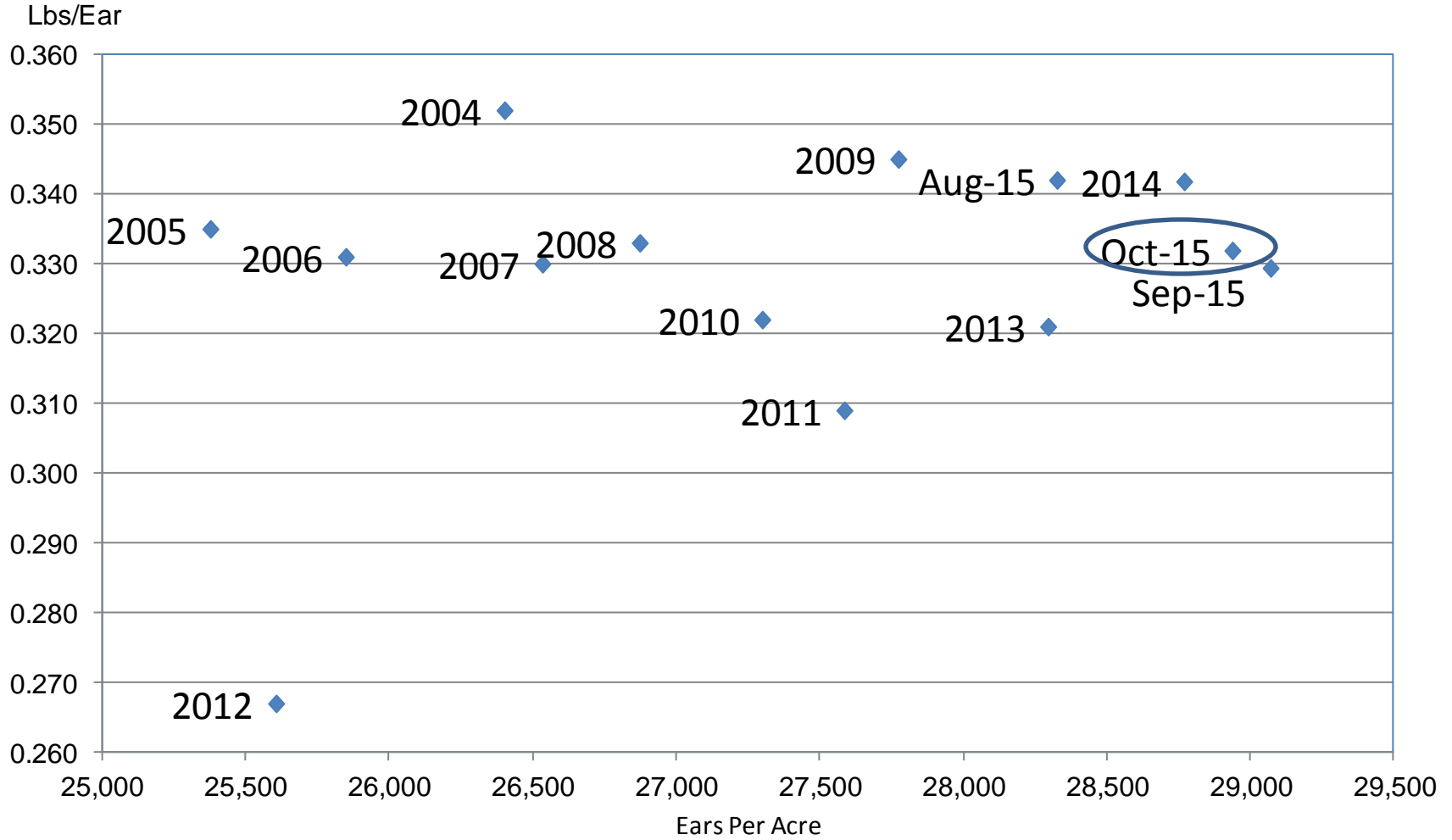
U.S. 168.0
0.5

Record High

NC = No Change

Corn Objective Yield Region

Ears Per Acre vs. Implied Ear Weight



$$\text{Implied Ear Weight} = (\text{Published Yield} * 56) / \text{Ears}$$



Corn Objective Yield - October

Percent of Samples Processed in the Lab

Year	Dent Stage	Mature
	<i>Percent</i>	
2011	24	57
2012	3	90
2013	NA	NA
2014	39	53
2015	16	70



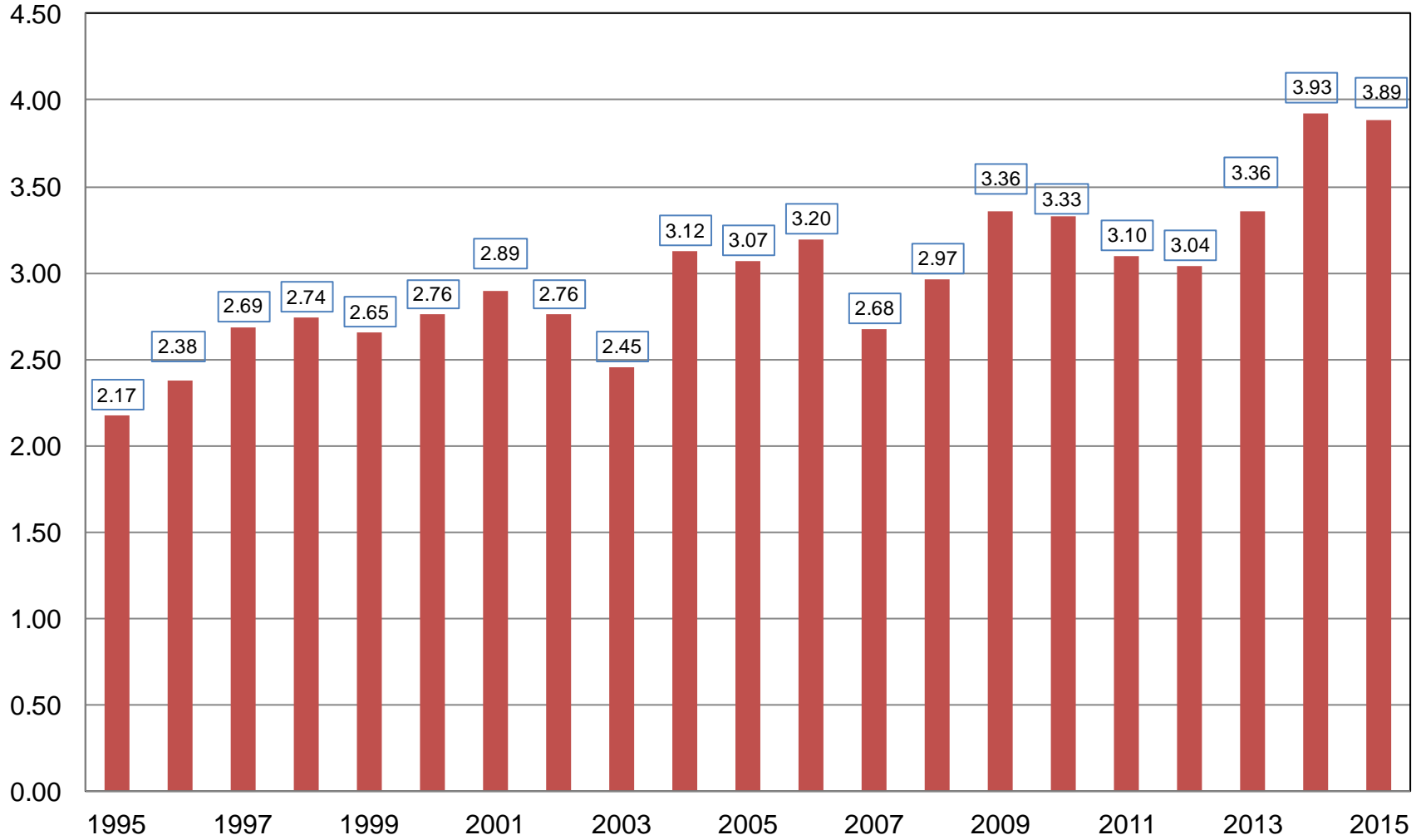
October 2015 Crop Production

Crop	Unit	October 2015	% Change From Previous Forecast	% Change From Previous Season
Soybeans				
Harvested	Mil Ac	82.4	-1.3	-0.2
Yield	Bu/Ac	47.2	+0.2	-0.6
Production	Bil Bu	3.89	-1.2	-1.0



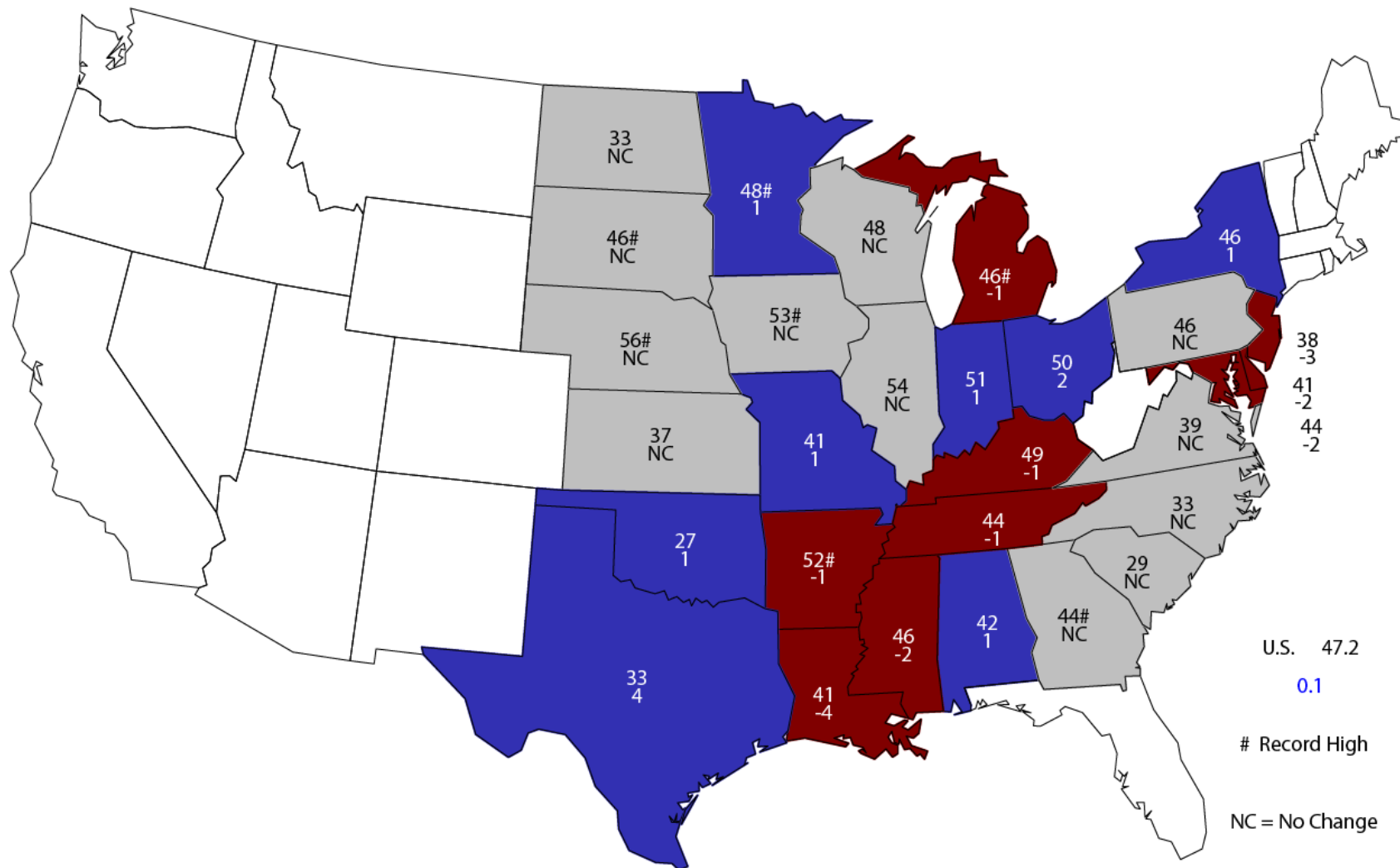
Soybean Production United States

Billion Bushels



October 1, 2015 Soybean Yield

Bushels and Change From Previous Month

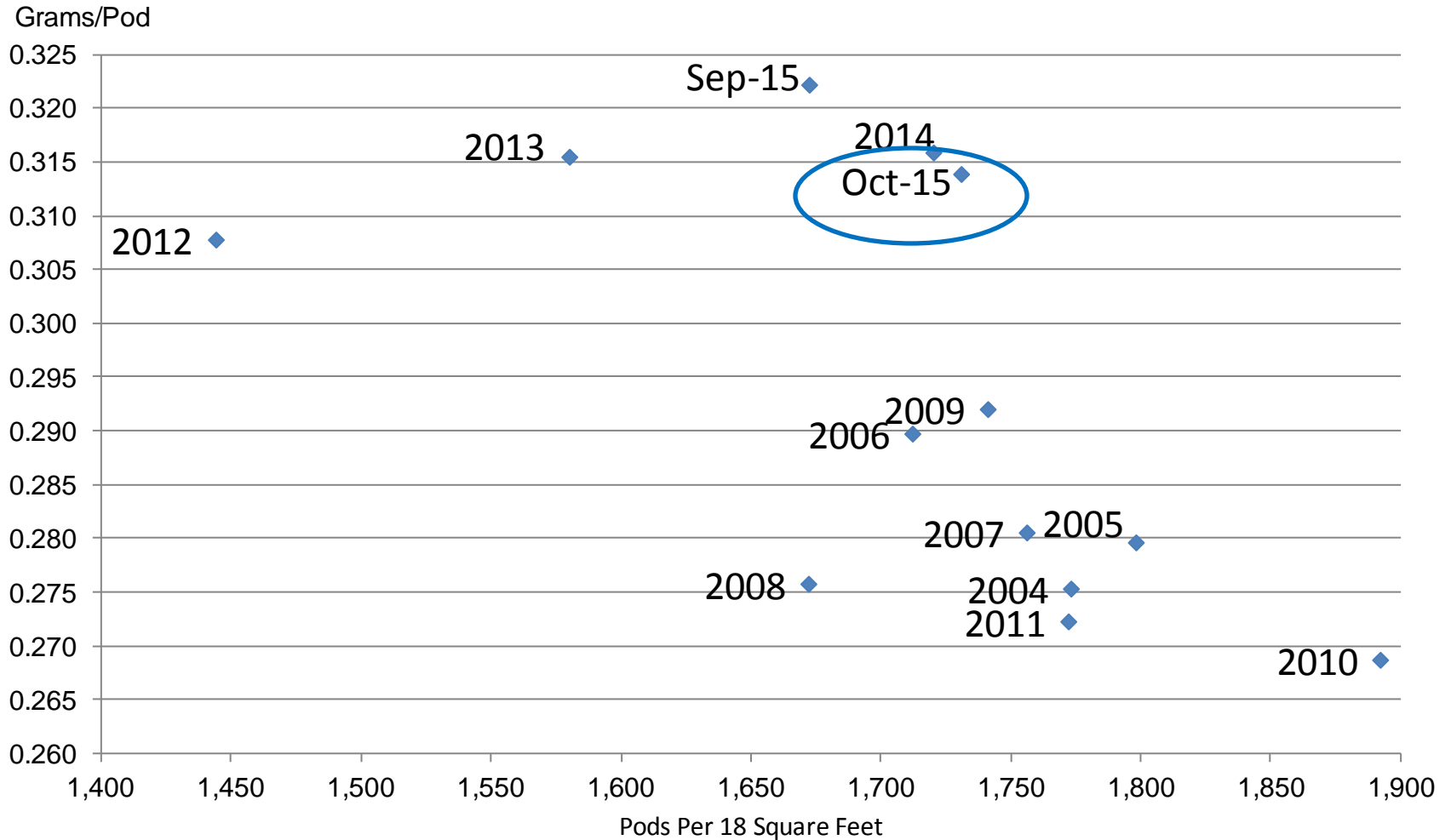


U.S. 47.2
 0.1
 # Record High
 NC = No Change



Soybean Objective Yield Region

Pods Per 18 Square Feet Vs. Implied Pod Weight



Implied Pod Weight = (Published Yield / Pods)/0.0889



Soybean Objective Yield - October

Percent of Samples Processed in the Lab

Year	Mature
	<i>Percent</i>
2011	32
2012	64
2013	NA
2014	35
2015	54



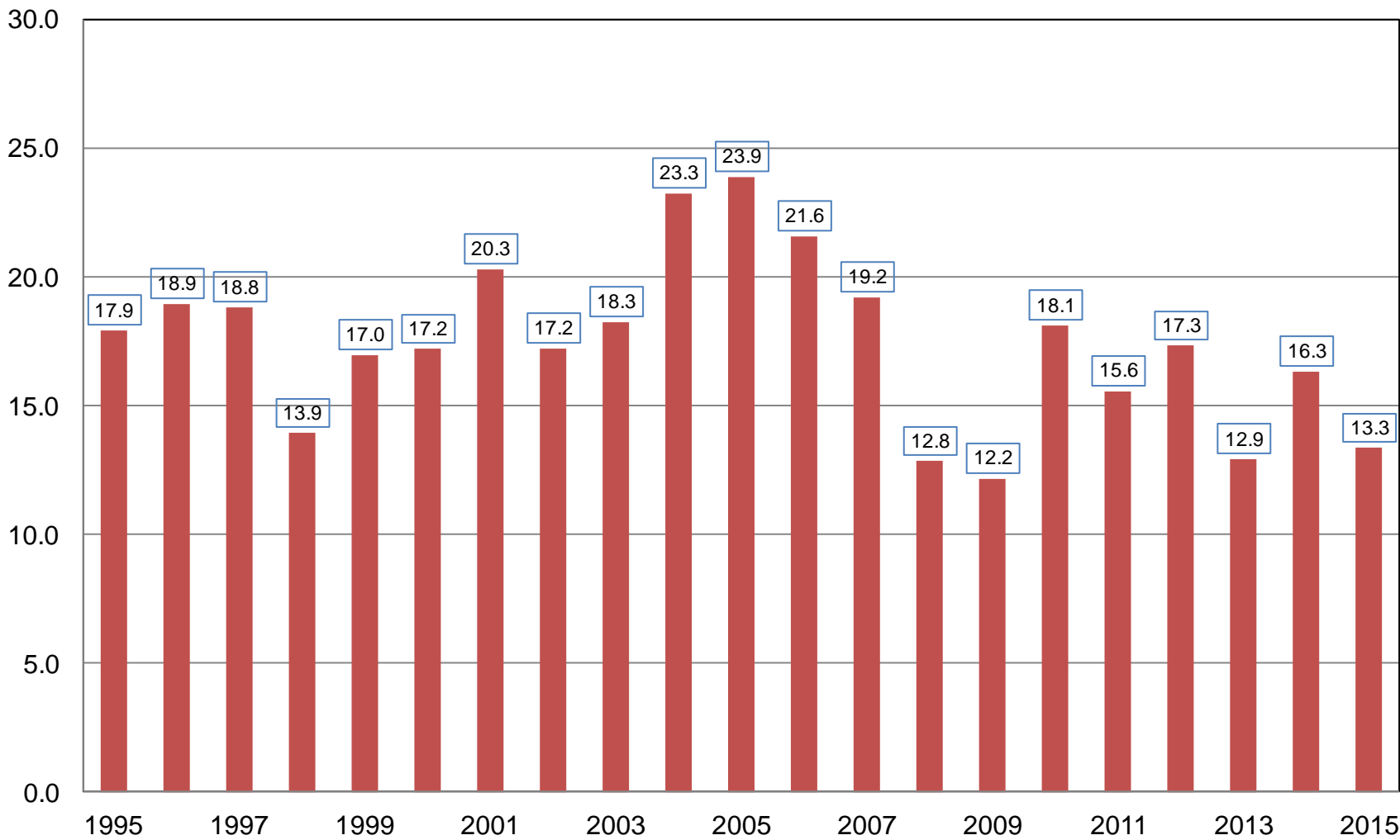
October 2015 Crop Production

Crop	Unit	October 2015	% Change From Previous Forecast	% Change From Previous Season
All Cotton				
Harvested	Mil Ac	8.17	NC	-12.6
Yield	Lb/Ac	784	-0.6	-6.4
Production	Mil Bls	13.3	-0.7	-18.3



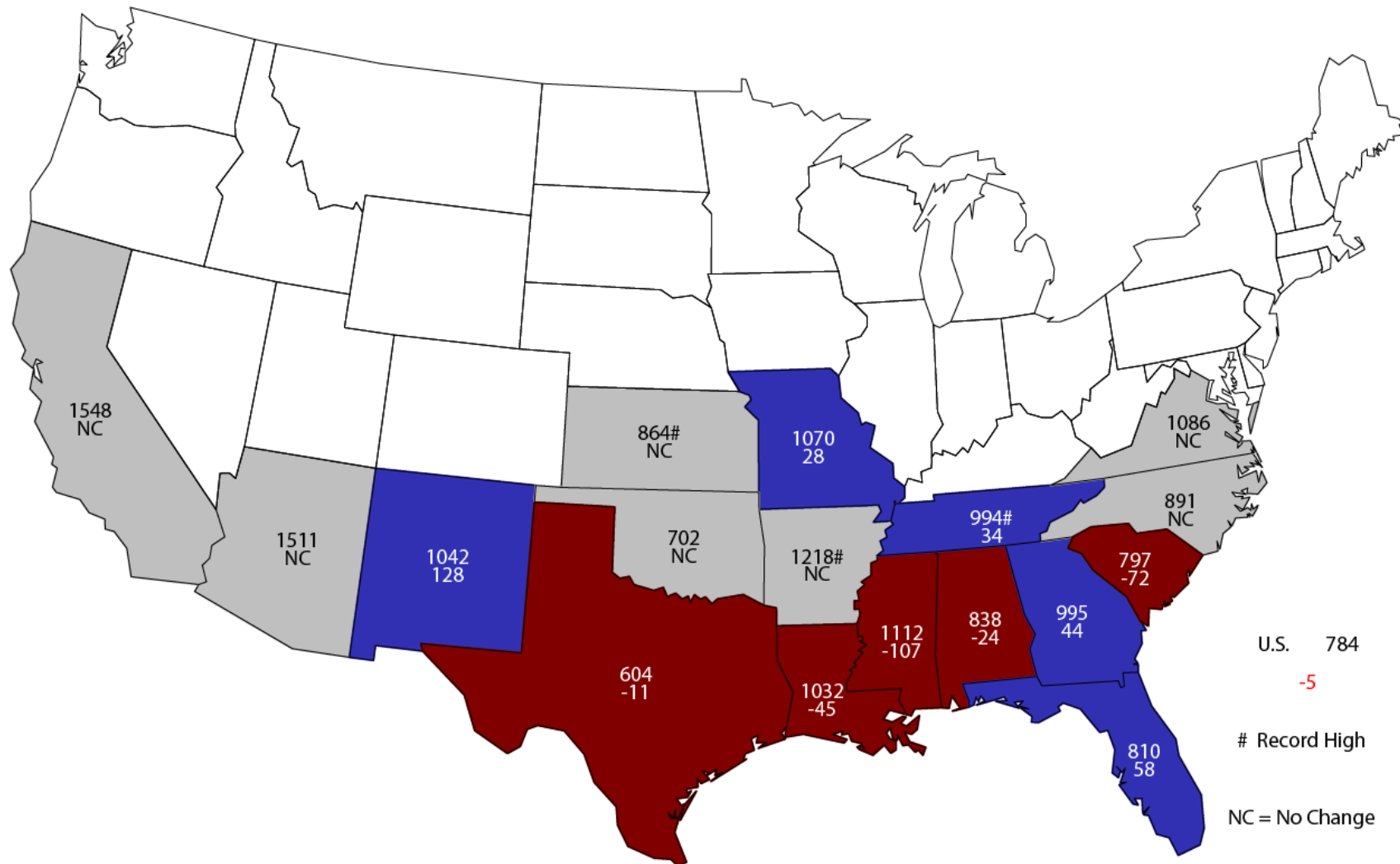
All Cotton Production United States

Million Bales



October 1, 2015 All Cotton Yield

Pounds and Change From Previous Month



U.S. 784
 -5
 # Record High
 NC = No Change



October 2015 Crop Production

Crop	Unit	October 2015	% Change From Previous Forecast	% Change From Previous Season
Rice				
Harvested	Mil Ac	2.57	NC	-12.0
Yield	Lbs/Ac	7,307	-0.9	-3.5
Production	Mil Cwt	188	-0.9	-15.0



October 2015 Crop Production

Crop	Unit	October 2015	% Change From Previous Forecast	% Change From Previous Season
Peanuts				
Harvested	Mil Ac	1.58	NC	+19.6
Yield	Lbs/Ac	3,997	+<0.1	+1.9
Production	Bil Lbs	6.32	+<0.1	+21.9



October 2015 Crop Production

Crop	Unit	October 2015	% Change From Previous Forecast	% Change From Previous Season
Sorghum				
Harvested	Mil Ac	7.65	-0.4	+19.4
Yield	Bu/Ac	75.0	+0.1	+10.9
Production	Mil Bu	574	-0.1	+32.6



October 2015 Crop Production

Crop	Unit	October 2015	% Change From Previous Forecast	% Change From Previous Season
Alfalfa Hay				
Harvested	Mil Ac	18.3	NC	-0.6
Yield	Tons/Ac	3.45	+1.8	+3.6
Production	Mil Tons	63.2	+1.8	+2.9



October 2015 Crop Production

Crop	Unit	October 2015	% Change From Previous Forecast	% Change From Previous Season
All Other Hay				
Harvested	Mil Ac	38.2	NC	-1.2
Yield	Tons/Ac	2.07	-1.0	+2.0
Production	Mil Tons	79.2	-1.0	+1.1



October 2015 Crop Production

Crop	Unit	October 2015	% Change From Previous Forecast	% Change From Previous Season
Production				
Sugarcane	Mil Tons	31.3	+0.4	+2.9
Sugarbeets	Mil Tons	34.8	+0.5	+10.8
All Tobacco	Mil Lbs	707	-0.4	-19.4



October 2015 Crop Production

Crop	Unit	October 2015	% Change From Previous Forecast	% Change From Previous Season
Production				
Canola	Bil Lbs	3.09	NA	+23.1
Cottonseed	Mil Tons	4.27	-0.7	-16.6
Sunflowers	Bil Lbs	2.91	NA	+31.3



October 2015 Crop Production

Crop	Unit	October 2015	% Change From Previous Forecast	% Change From Previous Season
Production				
Dry Edible Beans	Mil Cwt	28.1	-4.0	-3.7
Pecans	Mil Lbs	272	NA	+3.1



Upcoming Reports

Release Date	Report Title
October 23	Cattle on Feed Cotton Ginnings
October 28	USDA Data Users Meeting
October 29	Agricultural Prices Rice Stocks
November 2	CAIR: Cotton CAIR: Flour Milling CAIR: Grain Crushings CAIR: Fats & Oils
November 10	Crop Production



United States Department of Agriculture
National Agricultural Statistics Service

All Reports Available At
www.nass.usda.gov

For Questions
202-720-2127
800-727-9540
nass@nass.usda.gov