



United States Department of Agriculture  
**National Agricultural Statistics Service**

---

---

**SMALL GRAINS SUMMARY**  
**GRAIN STOCKS**  
Executive Summary

Lance Honig, Chief  
Crops Branch



# Contents

Field Crops	Grain Stocks	Oilseed Stocks
Wheat	Corn	Soybeans
Barley	Wheat	Sunflower
Oats	Barley	Safflower
Rye	Oats	Mustard Seed
	Sorghum	



# Survey Overview

	September Ag Survey
Survey Type	Farmer Reported
Collection Method	Mail, Phone, Internet, Personal Interview
Crops Included	Barley, Oats, Rye, Wheat Stocks – All Crops
States	All Except Hawaii
Sample Size	66,333
Collection Period	August 30 – September 16



# Small Grains Annual Summary

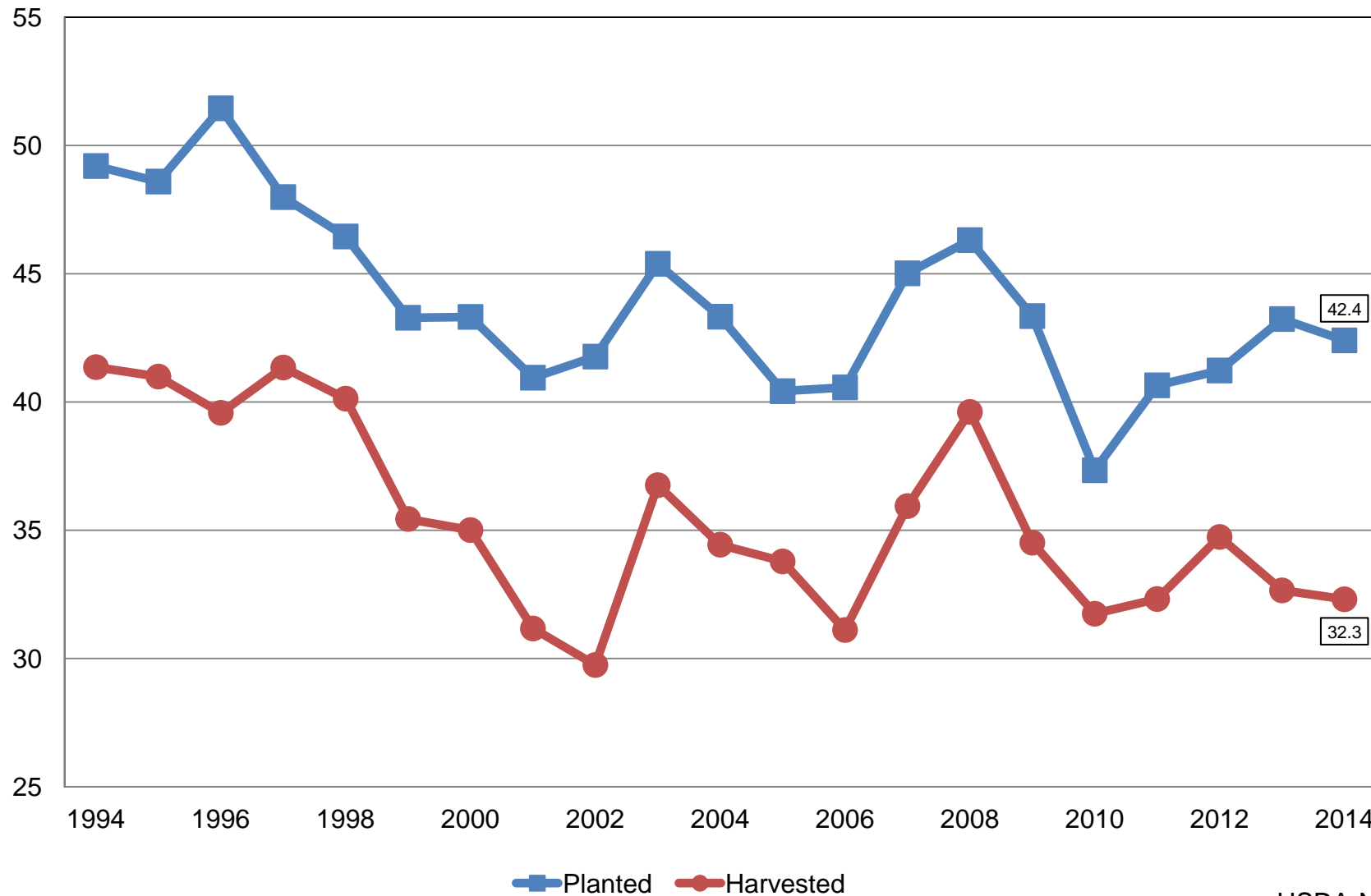
Crop	Unit	September 2014	% Change From Previous Forecast	% Change From Previous Season
Winter Wheat				
Planted	Mil Ac	42.4	+0.2	-1.9
Harvested	Mil Ac	32.3	-0.4	-1.1
Yield	Bu/Ac	42.6	-1.2	-9.9
Production	Bil Bu	1.38	-1.4	-10.7



# Winter Wheat Acres

## United States

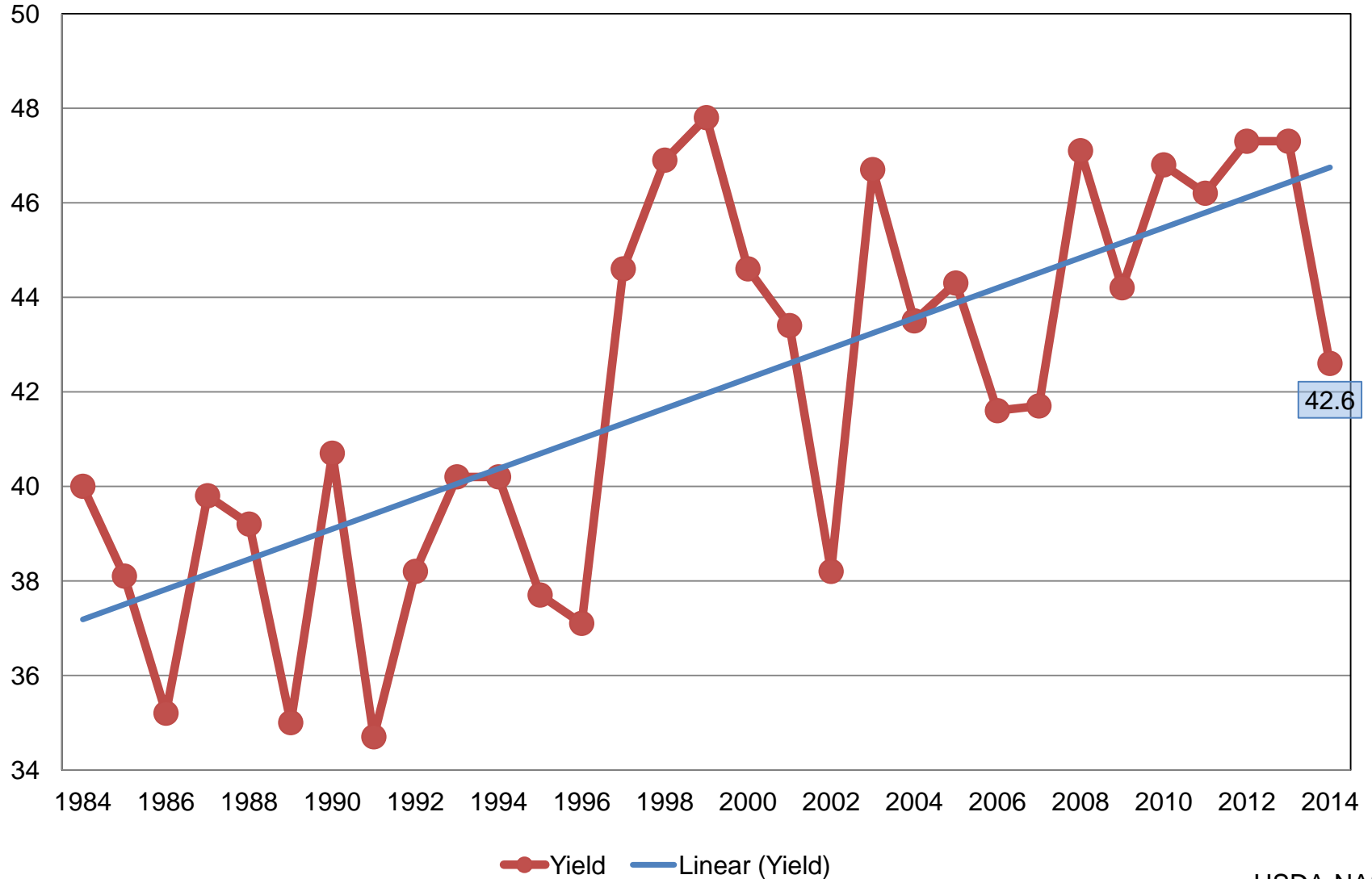
Million Acres





# Winter Wheat Yield United States

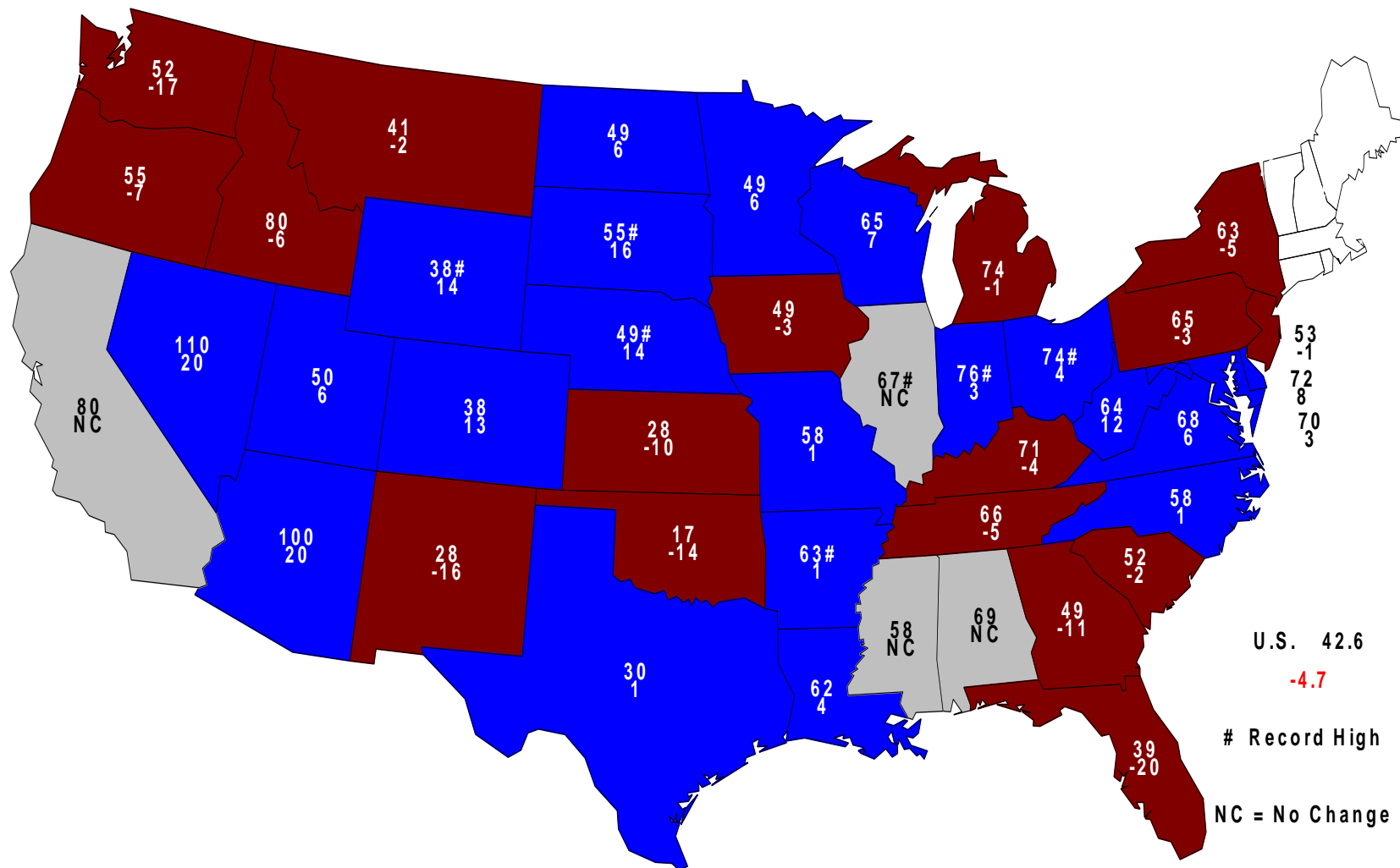
Bushels per Acre





# 2014 Winter Wheat Yield

## Bushels and Change From Previous Year





# Small Grains Annual Summary

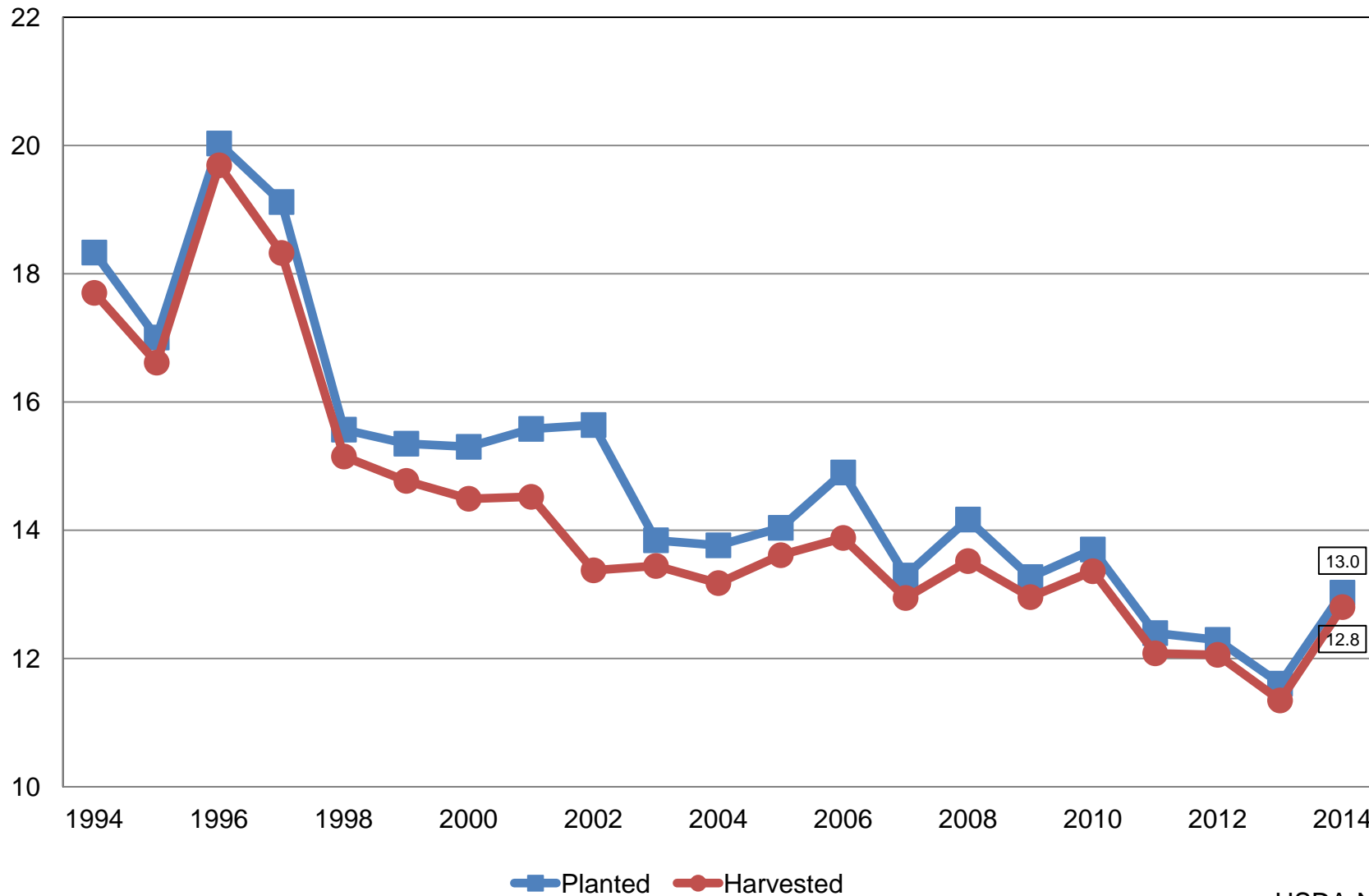
Crop	Unit	September 2014	% Change From Previous Forecast	% Change From Previous Season
Other Spring Wheat				
Planted	Mil Ac	13.0	+2.5	+12.2
Harvested	Mil Ac	12.8	+3.2	+12.8
Yield	Bu/Ac	46.9	+1.7	-0.4
Production	Mil Bu	601	+5.0	+12.5





# Other Spring Wheat Acres United States

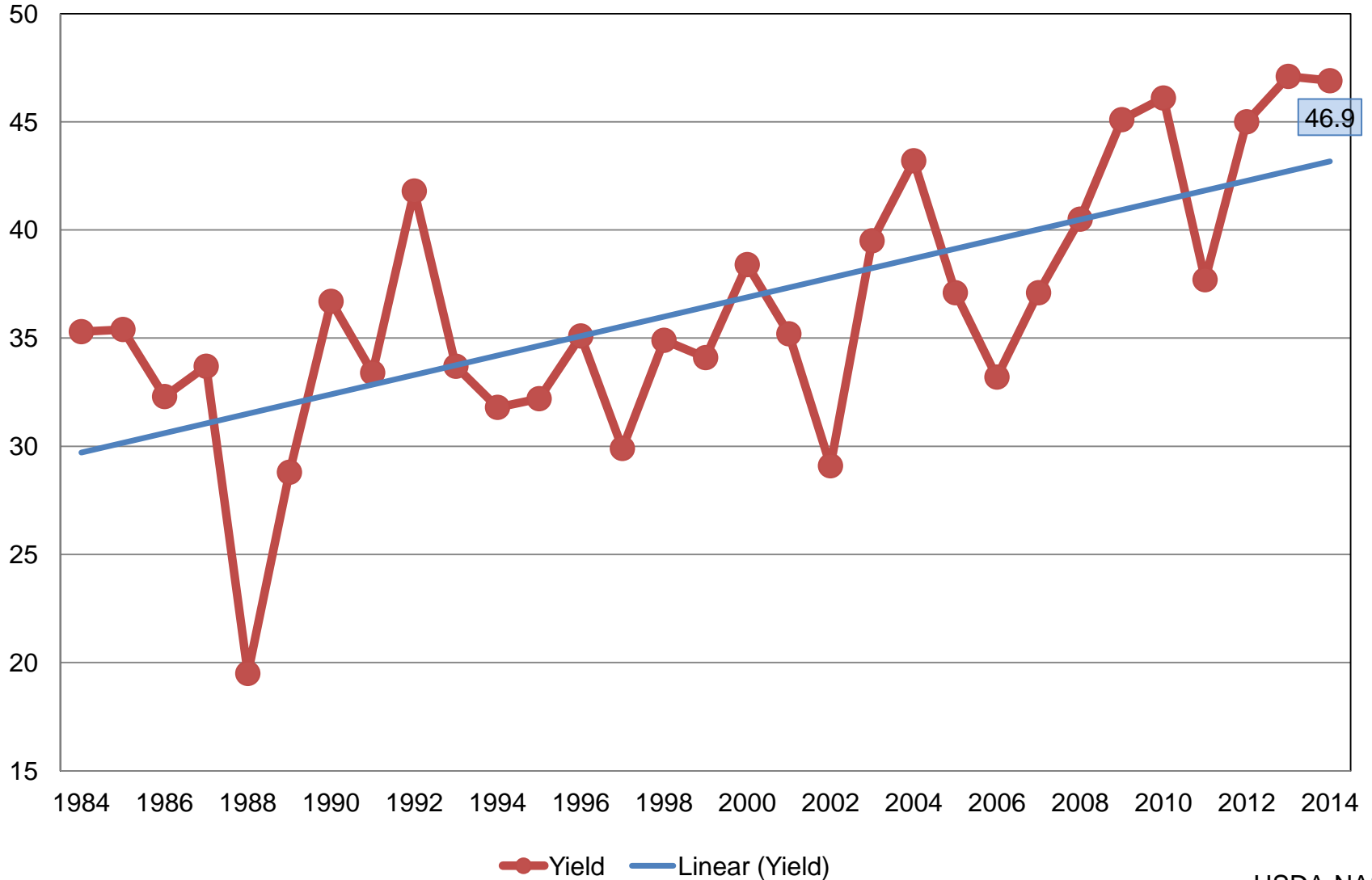
Million Acres





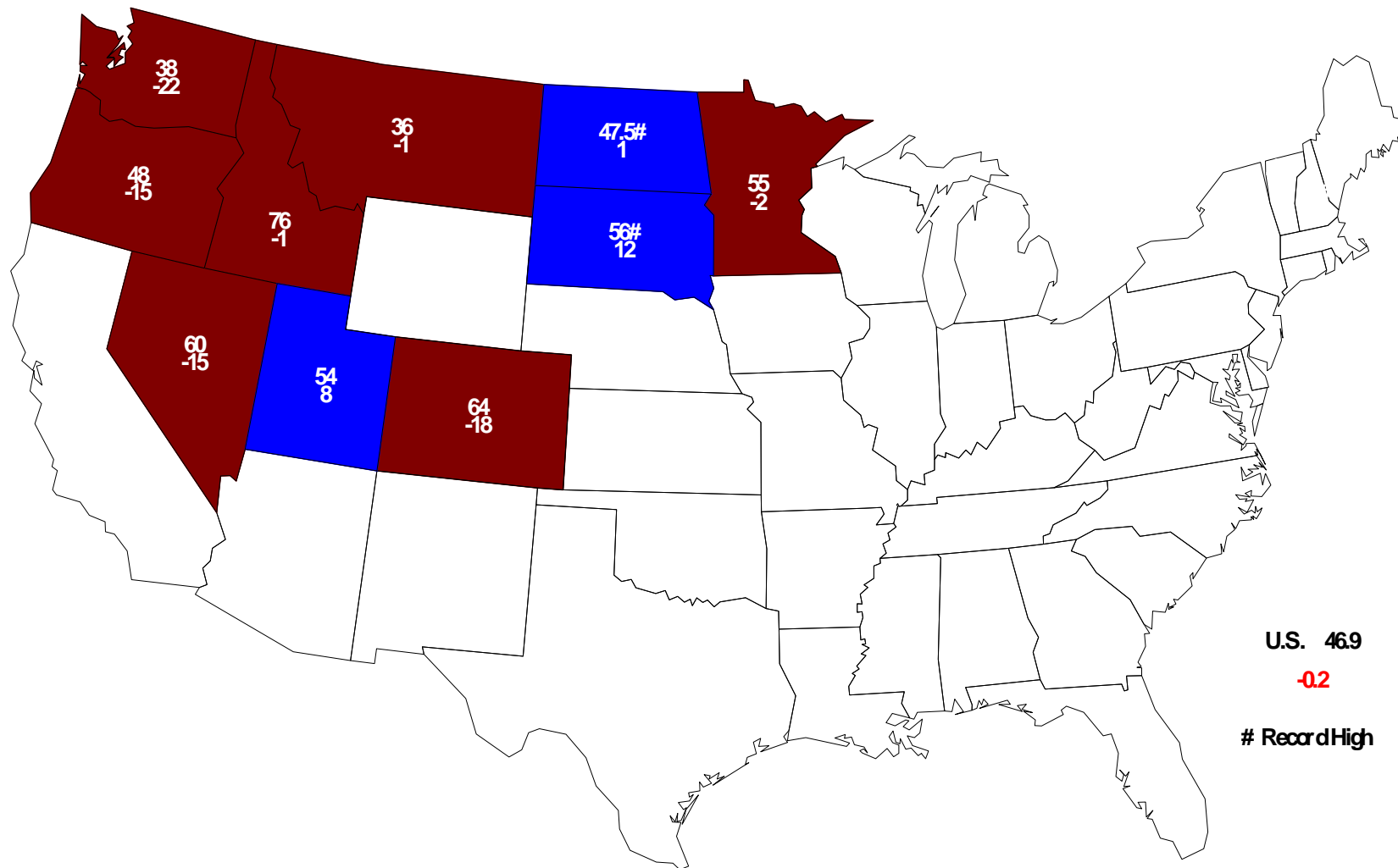
# Other Spring Wheat Yield United States

Bushels per Acre



# 2014 Other Spring Wheat Yield

## Bushels and Change From Previous Year



U.S. 46.9

-0.2

# Record High



# Small Grains Annual Summary

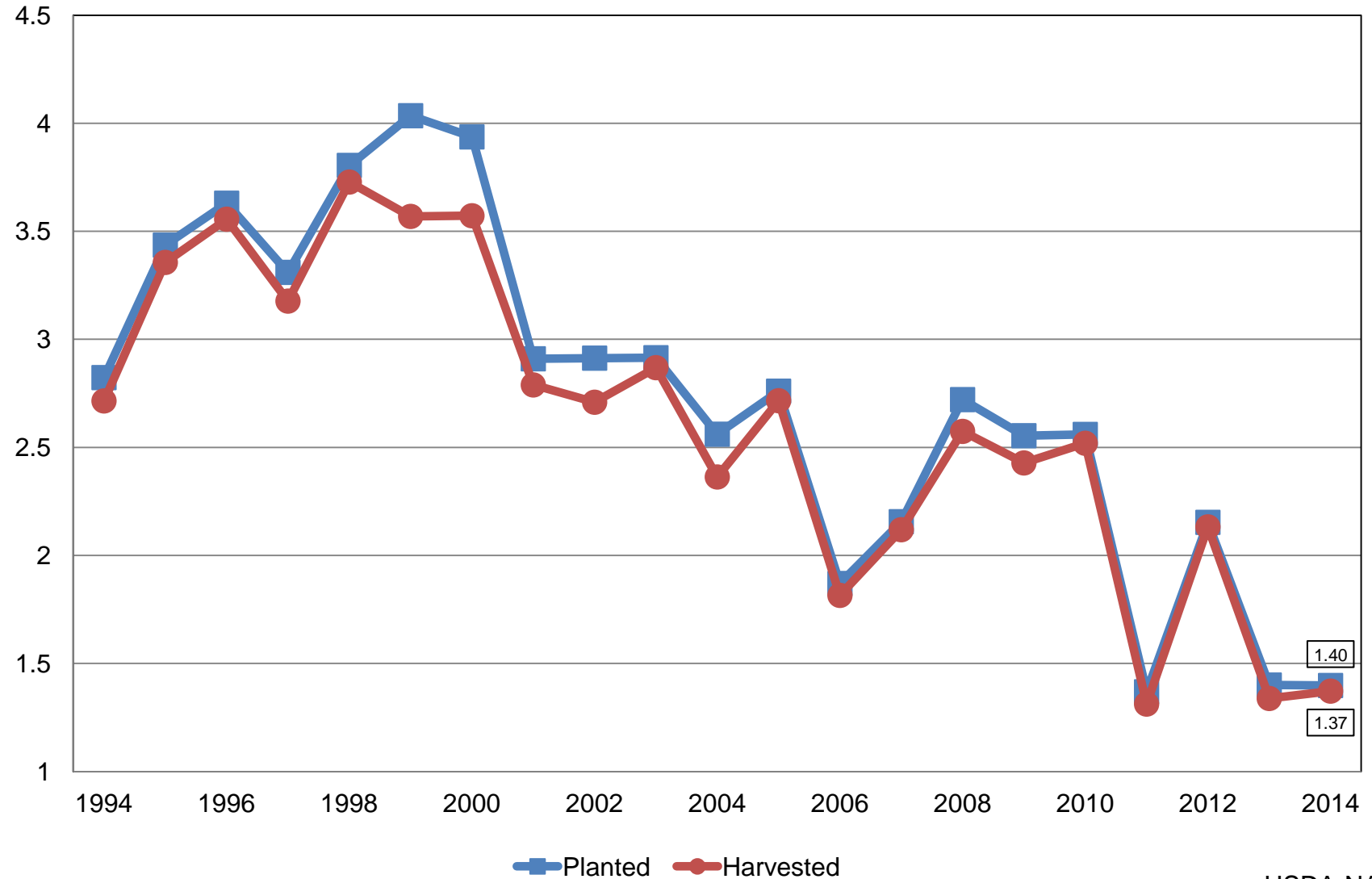
Crop	Unit	September 2014	% Change From Previous Forecast	% Change From Previous Season
Durum Wheat				
Planted	Mil Ac	1.40	-4.8	-0.1
Harvested	Mil Ac	1.37	-3.2	+2.5
Yield	Bu/Ac	41.6	-2.6	-3.9
Production	Mil Bu	57.1	-5.7	-1.5



# Durum Wheat Acres

## United States

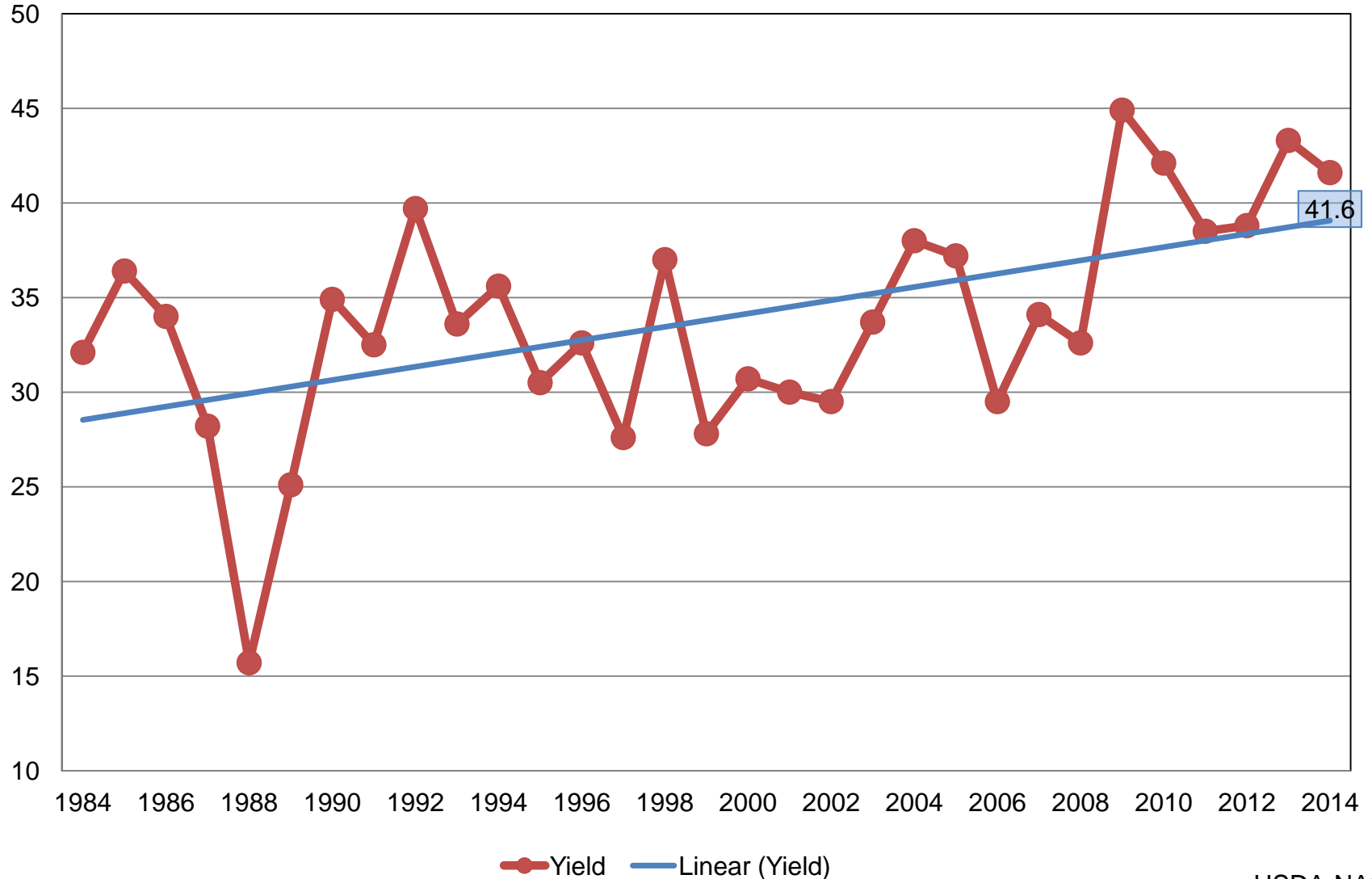
Million Acres



# Durum Wheat Yield

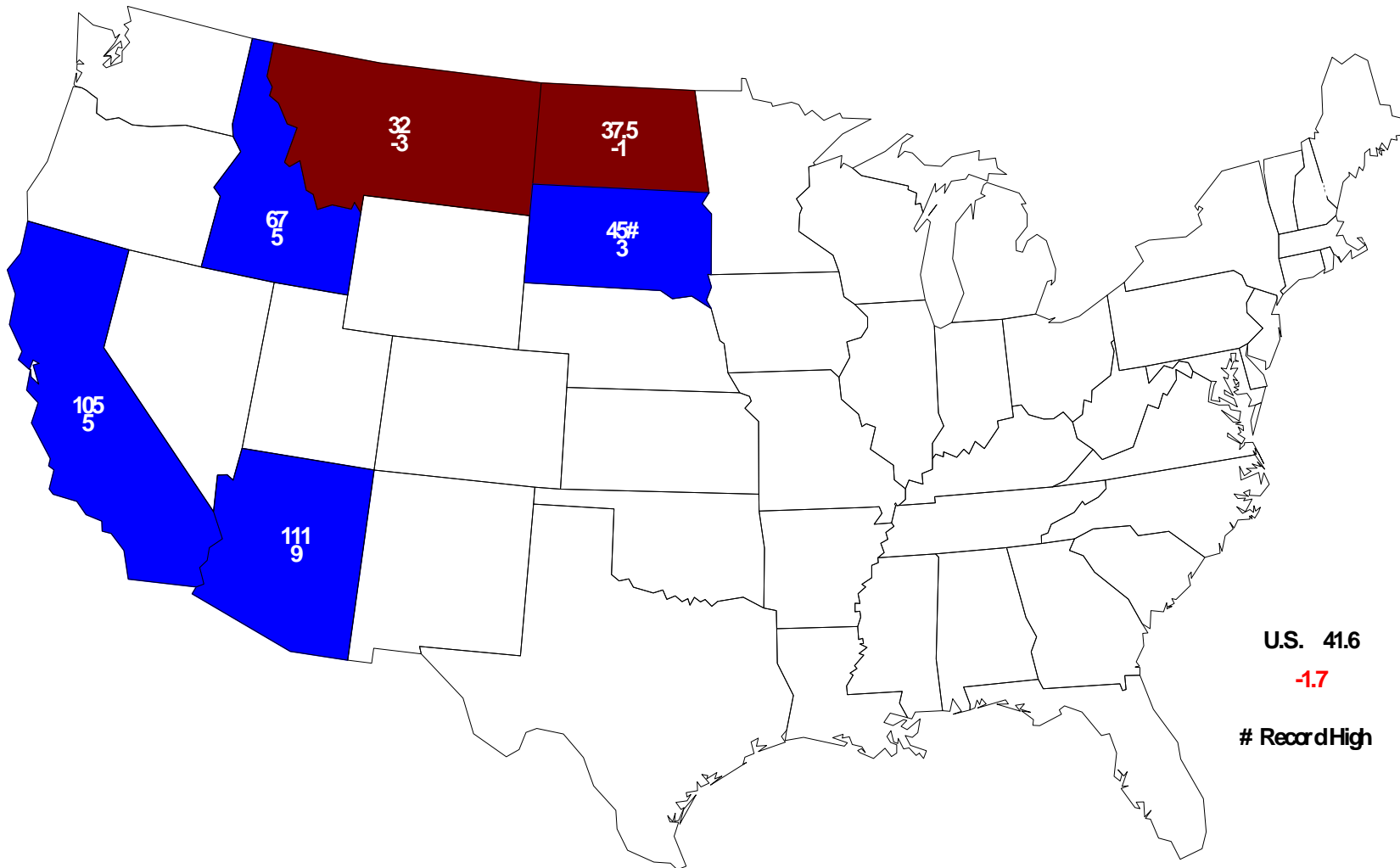
## United States

Bushels per Acre



# 2014 Durum Wheat Yield

## Bushels and Change From Previous Year



U.S. 41.6

-1.7

# Record High



# Small Grains Annual Summary

Crop	Unit	September 2014	% Change From Previous Forecast	% Change From Previous Season
All Wheat				
Planted	Mil Ac	56.8	+0.6	+1.0
Harvested	Mil Ac	46.5	+0.5	+2.5
Yield	Bu/Ac	43.8	-0.2	-7.0
Production	Bil Bu	2.04	+0.3	-4.7





# Small Grains Annual Summary

Crop	Unit	September 2014	% Change From Previous Forecast	% Change From Previous Season
Barley				
Planted	Mil Ac	2.98	-3.8	-15.7
Harvested	Mil Ac	2.46	-6.6	-19.1
Yield	Bu/Ac	73.4	+0.3	+2.9
Production	Mil Bu	180	-6.4	-16.8



# Small Grains Annual Summary

Crop	Unit	September 2014	% Change From Previous Forecast	% Change From Previous Season
Oats				
Planted	Mil Ac	2.72	-10.0	-8.6
Harvested	Mil Ac	1.04	-9.9	+3.0
Yield	Bu/Ac	67.8	+1.2	+5.8
Production	Mil Bu	70.5	-8.8	+9.0



# Small Grains Annual Summary

Crop	Unit	September 2014	% Change From Previous Forecast	% Change From Previous Season
Rye				
Planted	Mil Ac	1.43	+0.3	-1.2
Harvested	Mil Ac	0.258	-15.7	-7.2
Yield	Bu/Ac	27.9	N/A	+1.8
Production	Mil Bu	7.19	N/A	-5.7



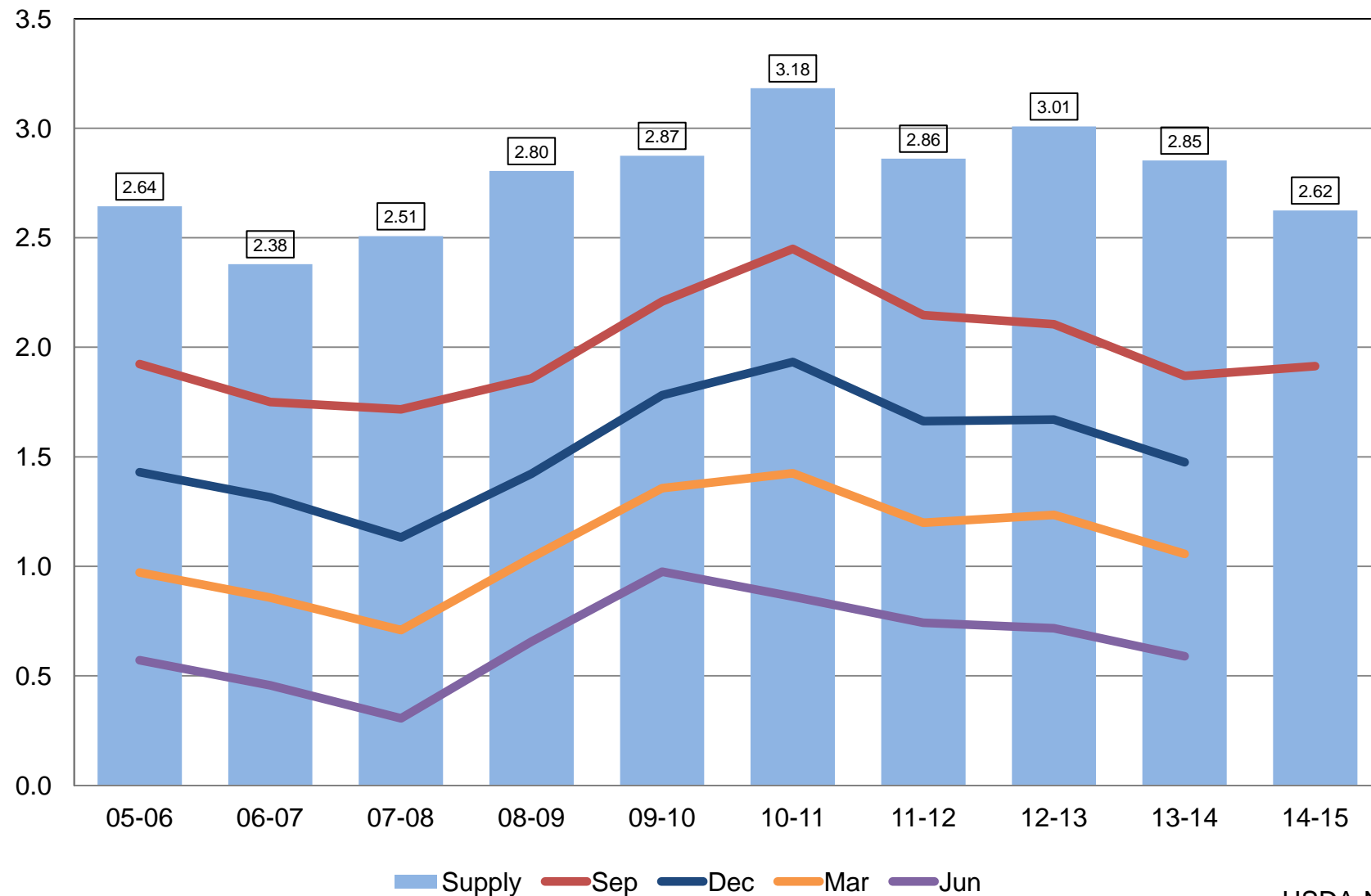
# Percent of Acres Left to be Harvested

## United States

Crop	2012	2013	2014
	<i>Percent</i>		
Other Spring Wheat	2.2	22.0	49.7
Durum Wheat	7.0	58.4	70.0
Barley	3.4	13.5	23.6
Oats	7.8	18.4	26.7

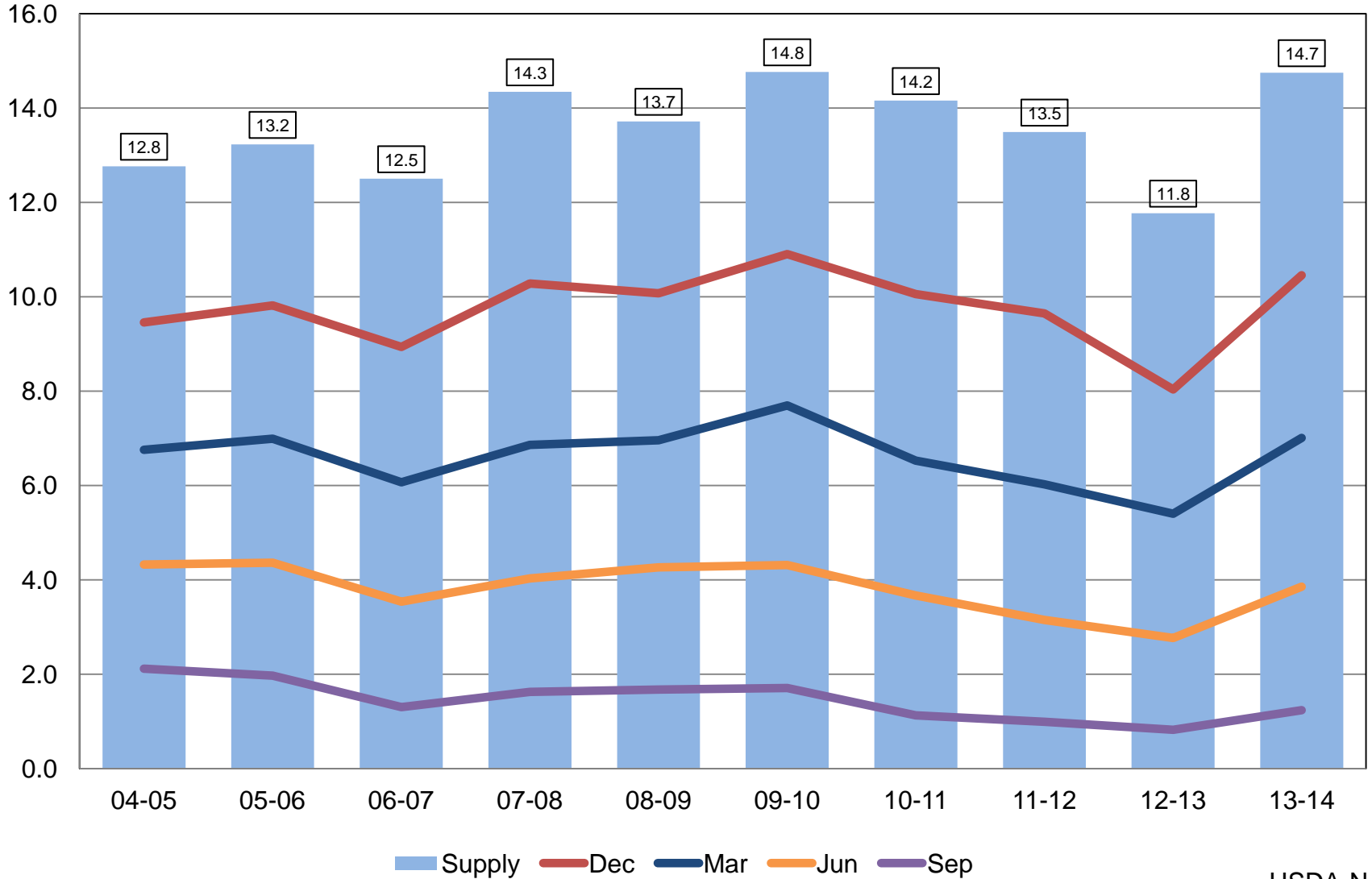
# All Wheat Stocks United States

Billion Bushels



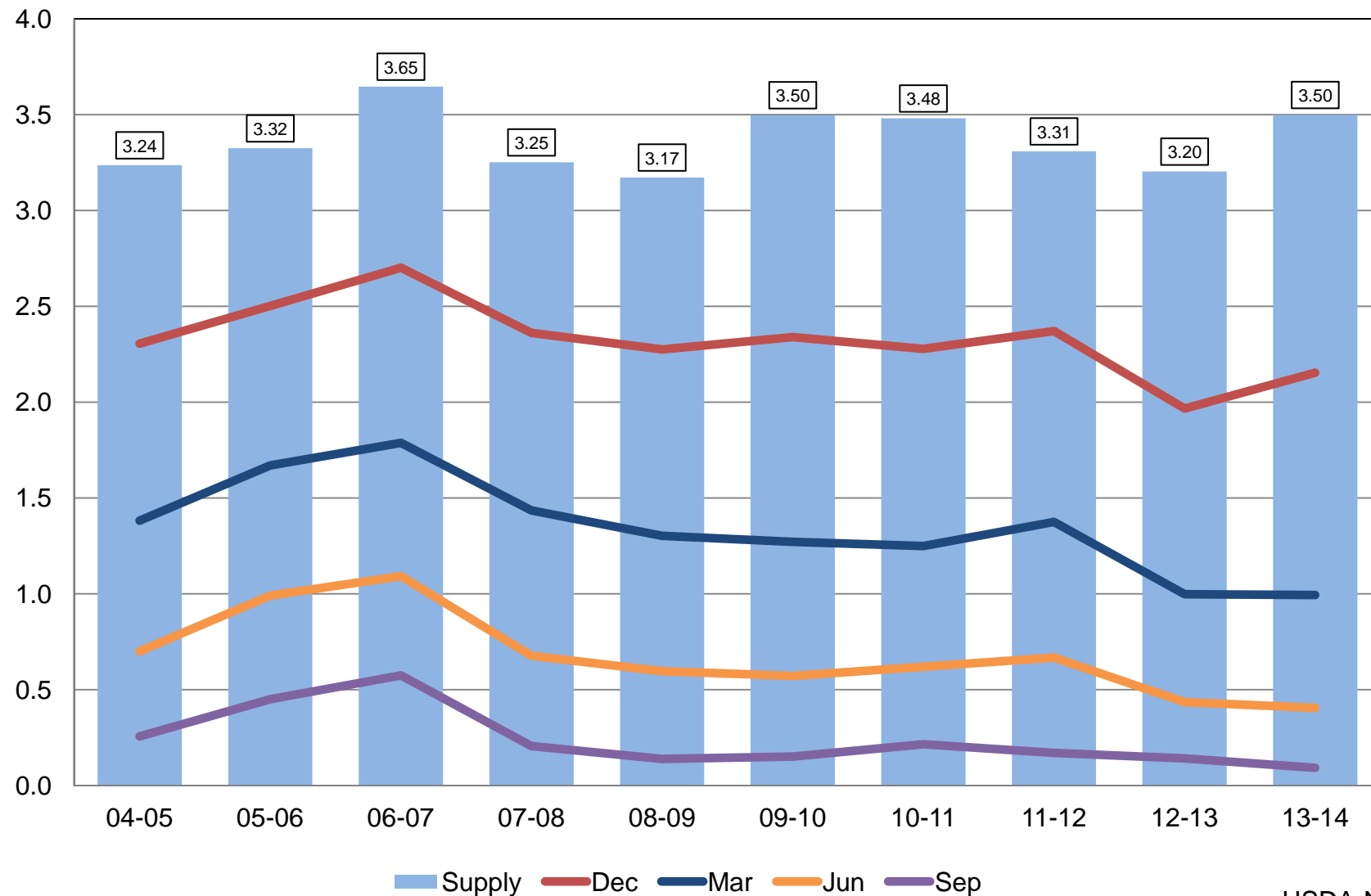
# Corn Stocks United States

Billion Bushels



# Soybean Stocks United States

Billion Bushels





# 2013 Soybean Crop

	Previous Estimates	Sept 30 Estimates	Change
	<i>Million Bushels</i>		
Sept 1, 2013 Beginning Stocks	141	141	NC
2013 Production	3,289	3,358	+69
Imports	*80	*80	NC
<b>Total Supply</b>	<b>3,509</b>	<b>3,579</b>	<b>+69</b>
Crushings	*1,730	*1,730	NC
Exports	*1,645	*1,645	NC
Seed	*99	*99	NC
Measured Disappearance	*3,474	*3,474	NC
Ending Stocks	*130	92	-38
Residual	*-94	13	+107

\*WAOB Forecast – September WASDE Report





# September 1, 2014 Grain Stocks

Crop	Unit	September 2014	% Change From September 2013
Barley	Mil Bu	179	-8.8
Oats	Mil Bu	73.2	+15.3
Sorghum	Mil Bu	34.0	+124.6



# September 1, 2014 Oilseed Stocks

Crop	Unit	September 2014	% Change From September 2013
All Sunflower	Mil Lbs	201	-40.8
Safflower	Mil Lbs	9.15	+73.7
Mustard Seed	Mil Lbs	10.4	+11.0



# Upcoming Reports

Release Date	Report Title
October 10	Crop Production Cotton Ginnings
October 20	Data Users Meeting
October 24	Cattle on Feed Cotton Ginnings
October 29	Rice Stocks
October 31	Ag Prices



United States Department of Agriculture  
**National Agricultural Statistics Service**

---

---

**All Reports Available At**  
[www.nass.usda.gov](http://www.nass.usda.gov)

**For Questions**  
202-720-2127  
800-727-9540  
[nass@nass.usda.gov](mailto:nass@nass.usda.gov)