



United States Department of Agriculture
National Agricultural Statistics Service



ACREAGE GRAIN STOCKS

Executive Summary

JUNE 30, 2014

12:00 PM



Contents



Field Crops	Stocks
Planted Acres	Corn
Harvested Acres	Soybeans
	Wheat
	Rice



Survey Overview

	June Ag Survey	June Area Survey
Survey Type	Farmer Reported	Farmer Reported
Collection Method	Mail, Phone, Internet, Personal Interview	Personal Interview
Crops Included	Field Crops	Field Crops
States	All except HI	All except AK and HI
Sample Size	~71,000 farms	~11,000 segments
Collection Period	May 30 – June 18	May 30 – June 16



U.S. Principal Crops Planted Acres



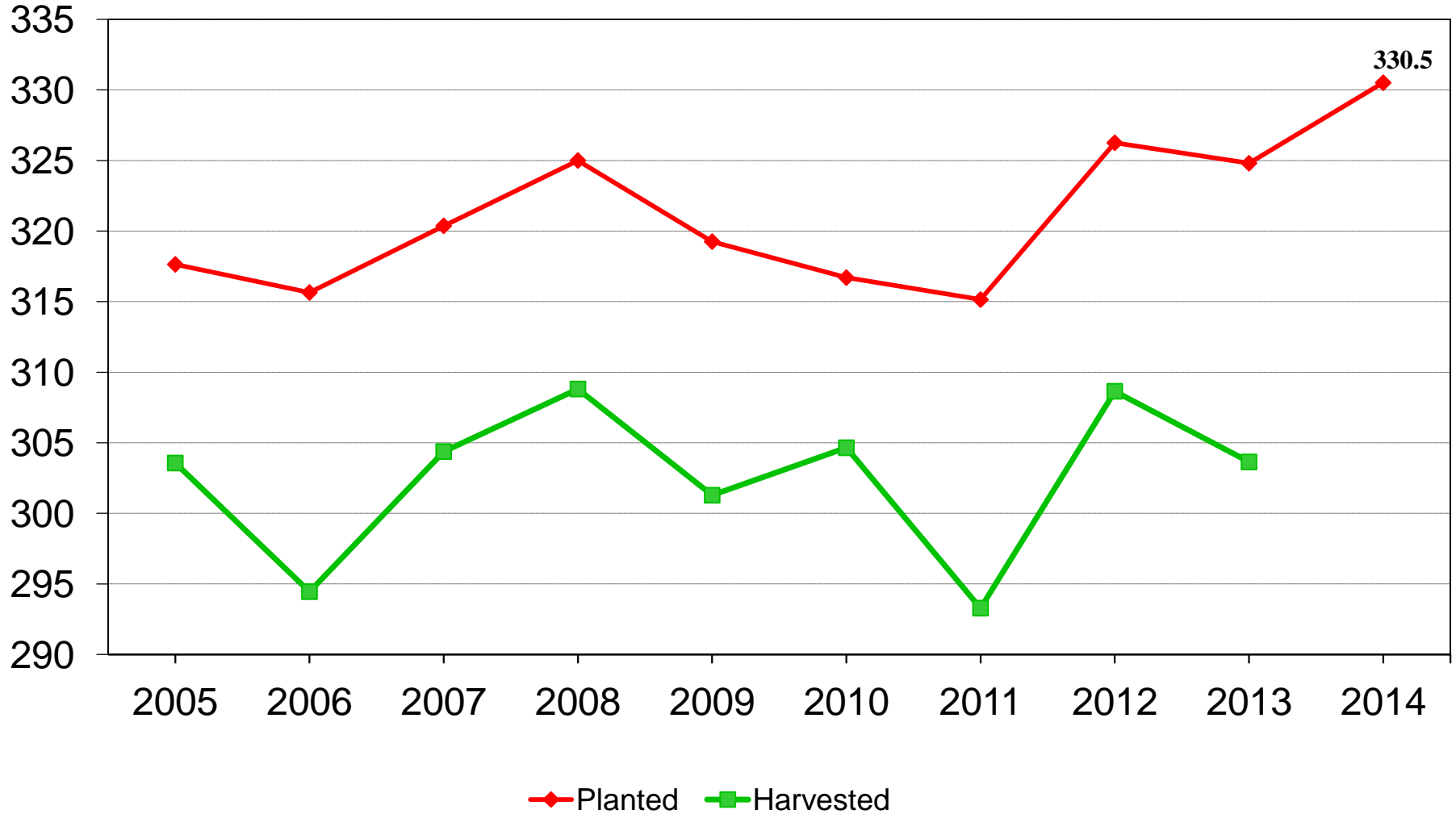
Year	Principal Crops	Change from Previous Year
<i>--Million Acres--</i>		
2005	317.6	- 4.7
2006	315.6	- 2.0
2007	320.4	+ 4.8
2008	325.0	+ 4.6
2009	319.3	- 5.7
2010	316.7	- 2.6
2011	315.1	- 1.6
2012	326.3	+11.2
2013	324.8	- 1.5
2014	330.5	+ 5.7



U.S. Principal Crop Acres



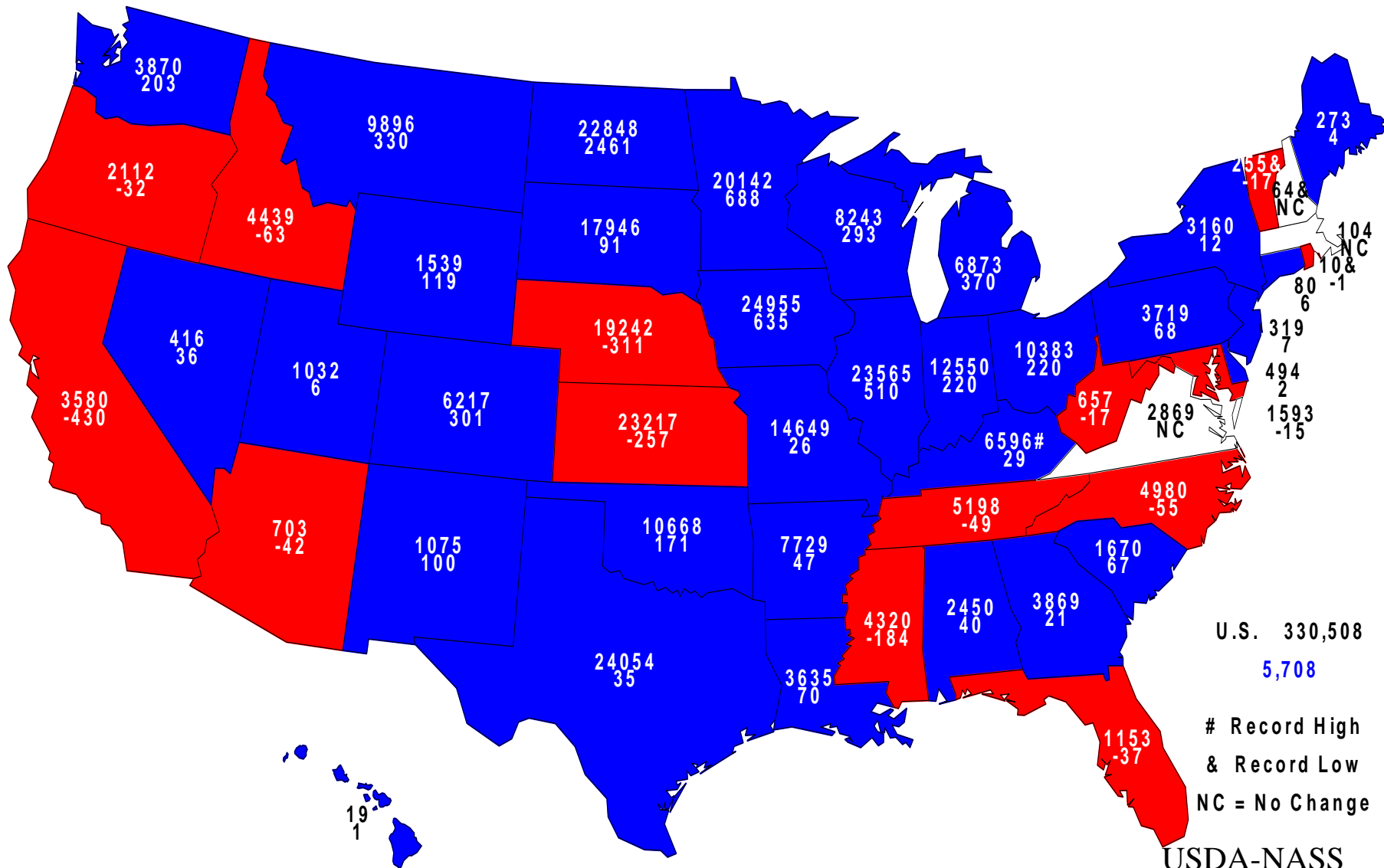
Million acres





2014 Principal Crops Planted

Acres (000) and Change From Previous Year



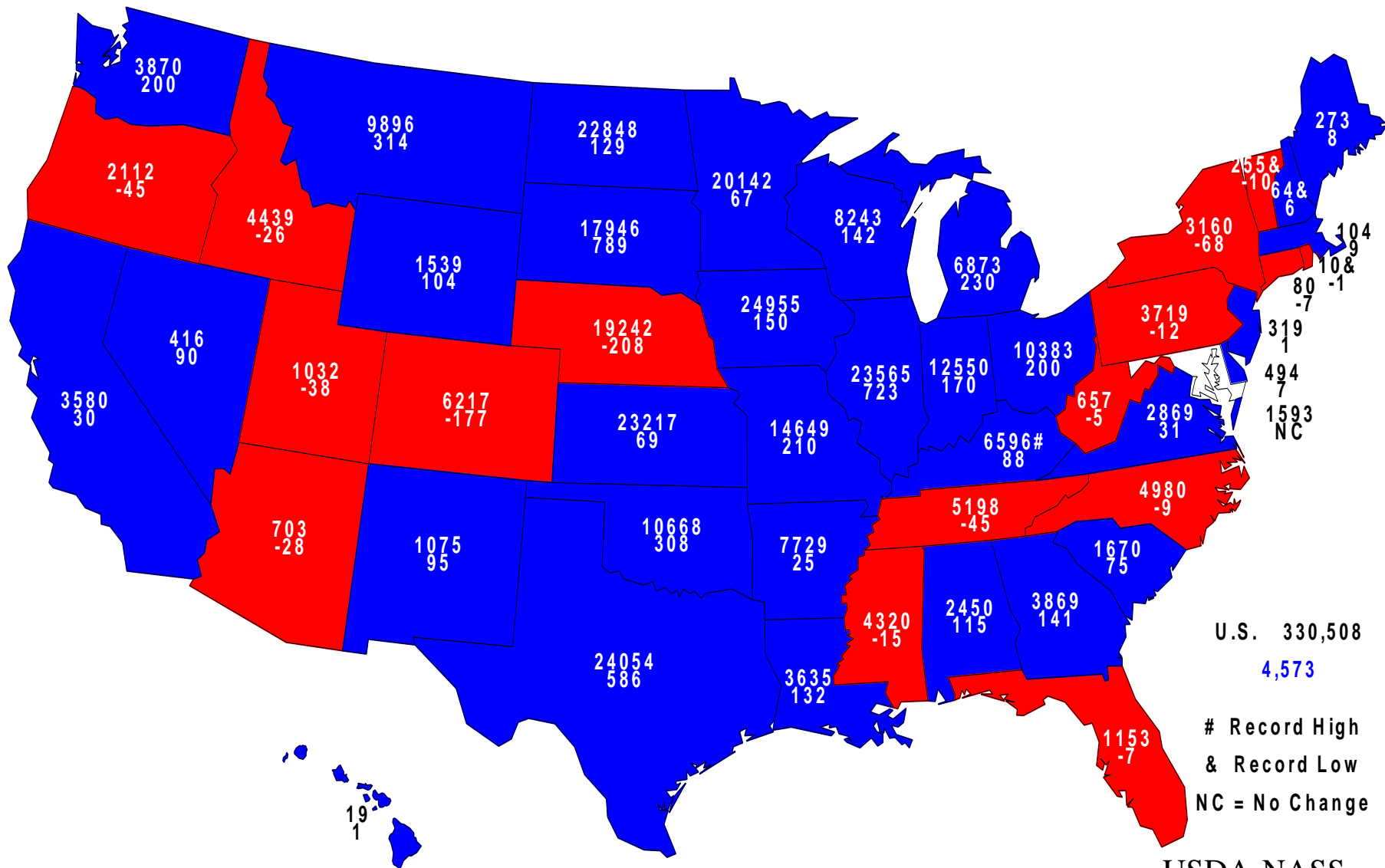
U.S. 330,508
5,708

Record High
& Record Low
NC = No Change



2014 Principal Crops Planted

Acres (000) and Change From Prospective Plantings



U.S. 330,508
4,573

Record High
& Record Low
NC = No Change

USDA-NASS
6-30-14



June 2014 Acreage

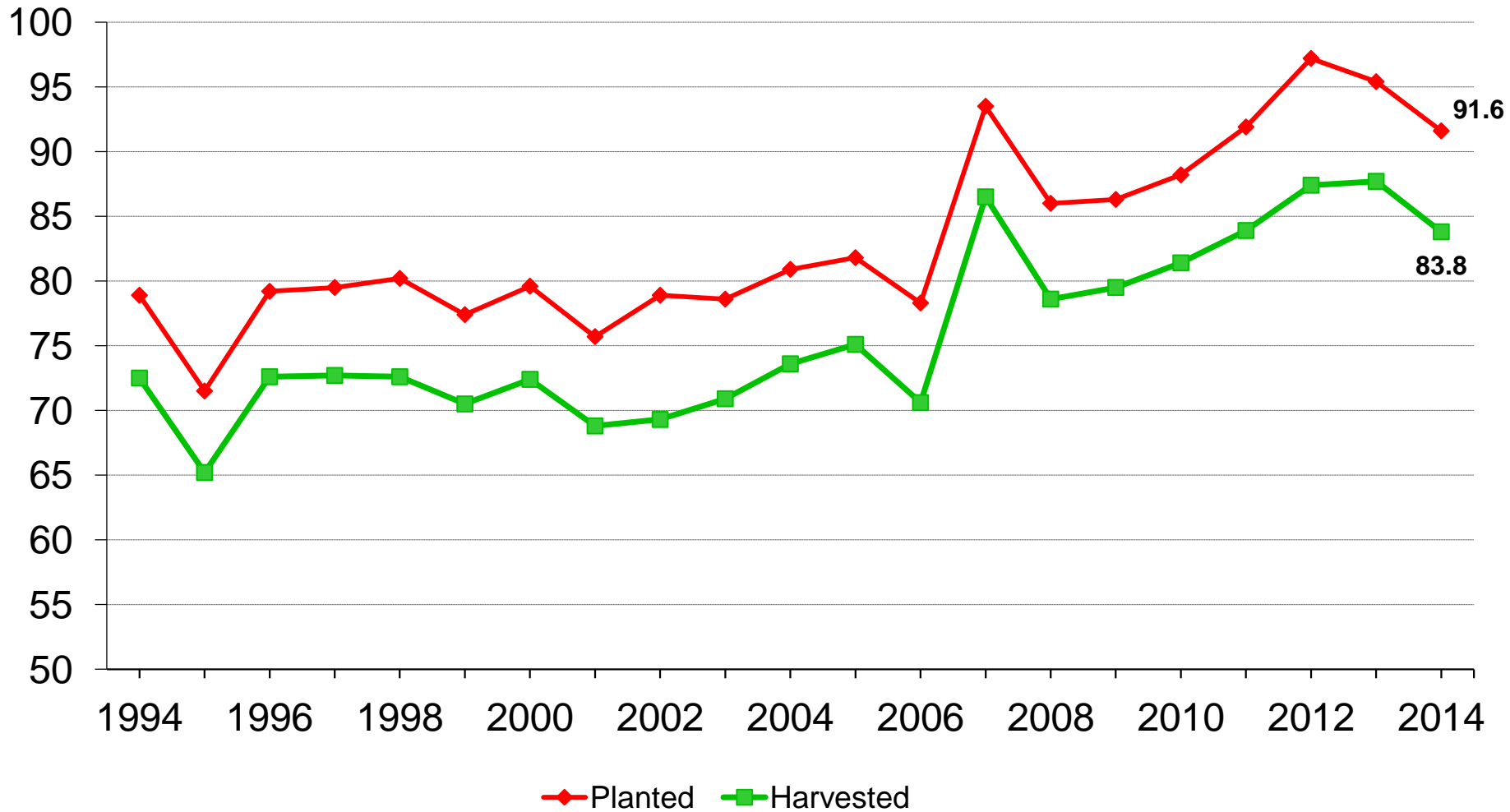
Crop	March 2014	June 2014	Change from March	Change from 2013
	<i>---Million acres---</i>		<i>---Percent---</i>	
Corn				
Planted	91.7	91.6	-< 0.1	-3.9
Harvested	---	83.8	---	-4.4



U.S. Corn Acres



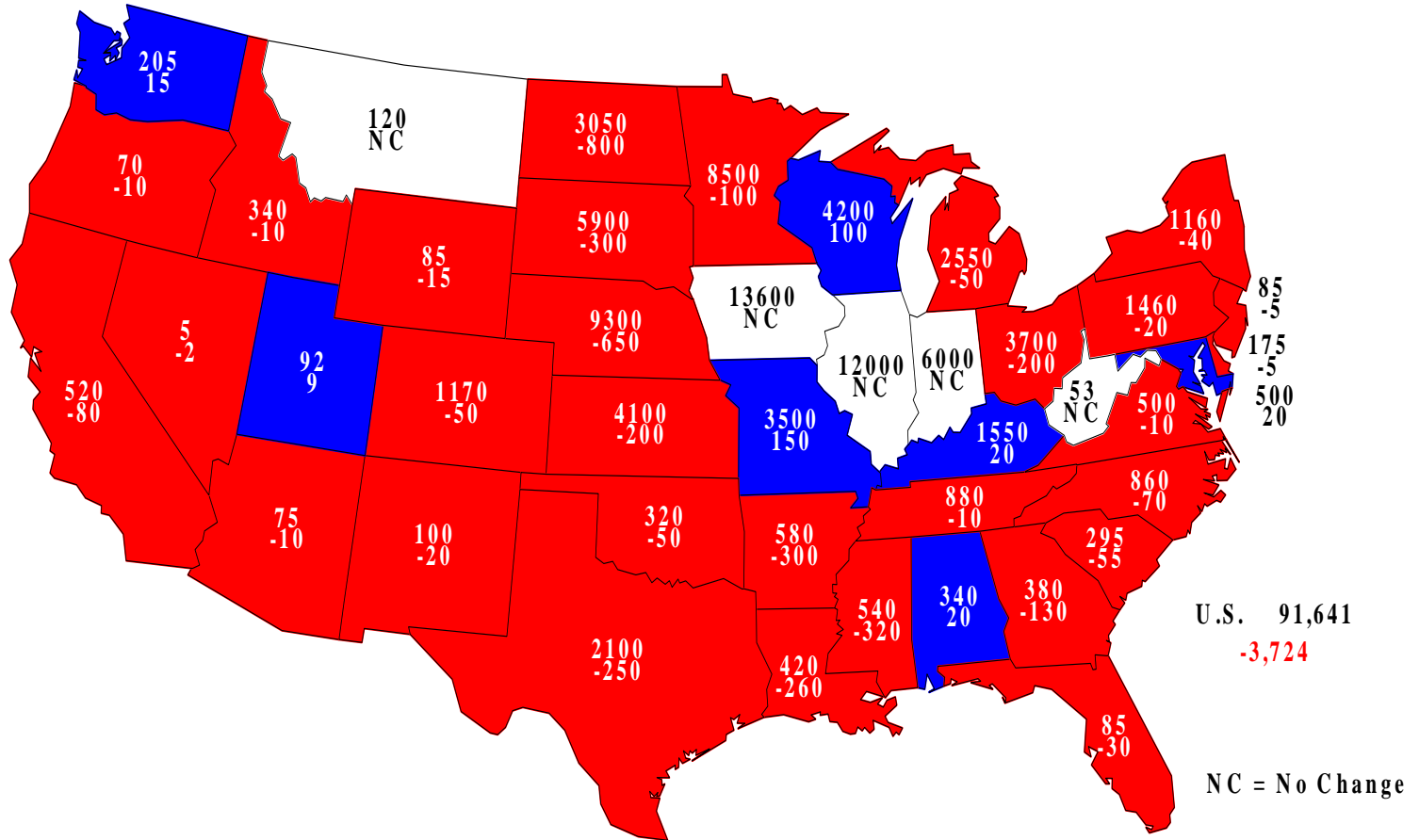
Million acres





2014 Corn Planted

Acres (000) and Change From Previous Year





June 2014 Acreage

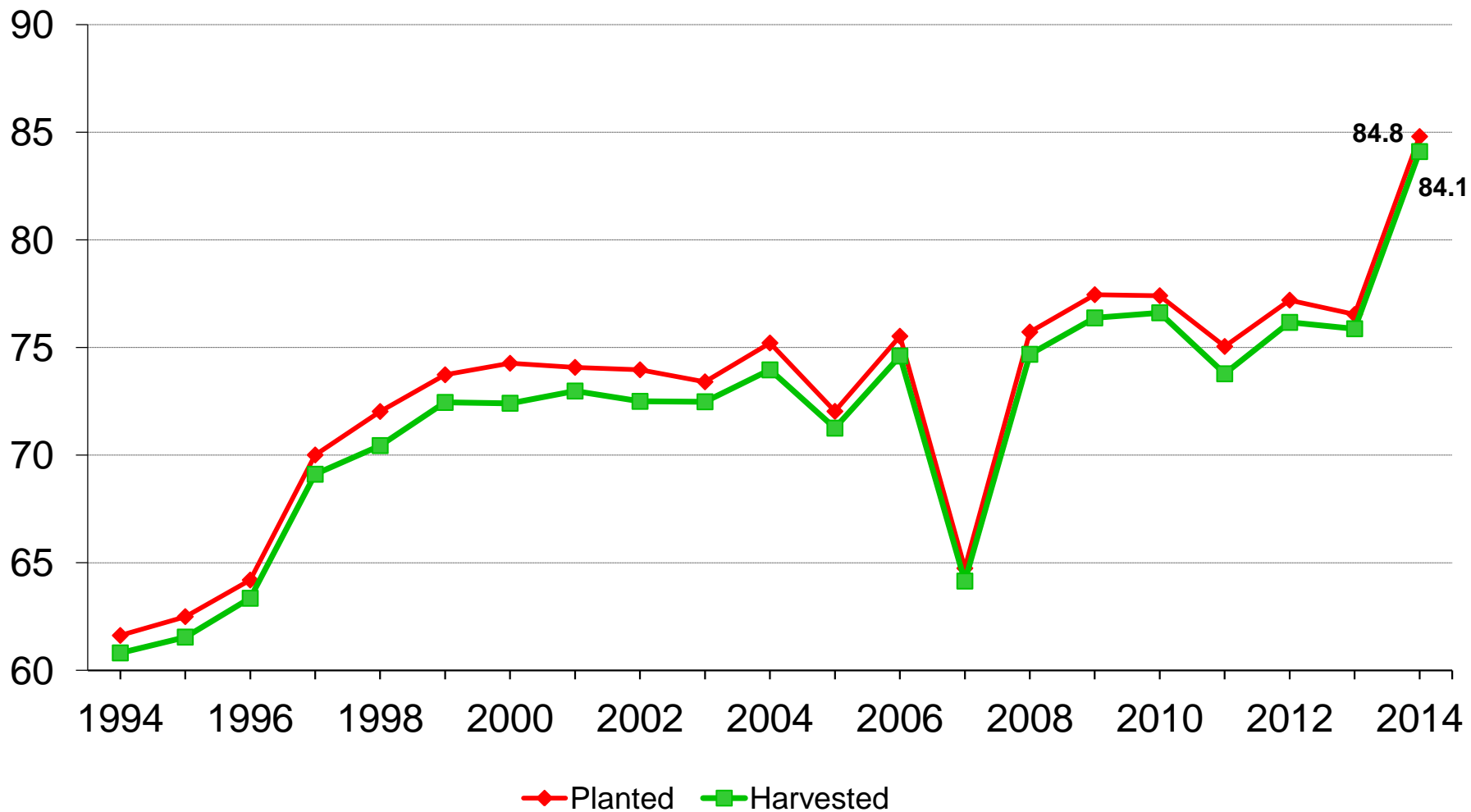
Crop	March 2014	June 2014	Change from March	Change from 2013
	<i>---Million acres---</i>		<i>---Percent---</i>	
Soybeans				
Planted	81.5	84.8	+4.1	+10.9
Harvested	---	84.1	---	+10.8



U.S. Soybean Acres



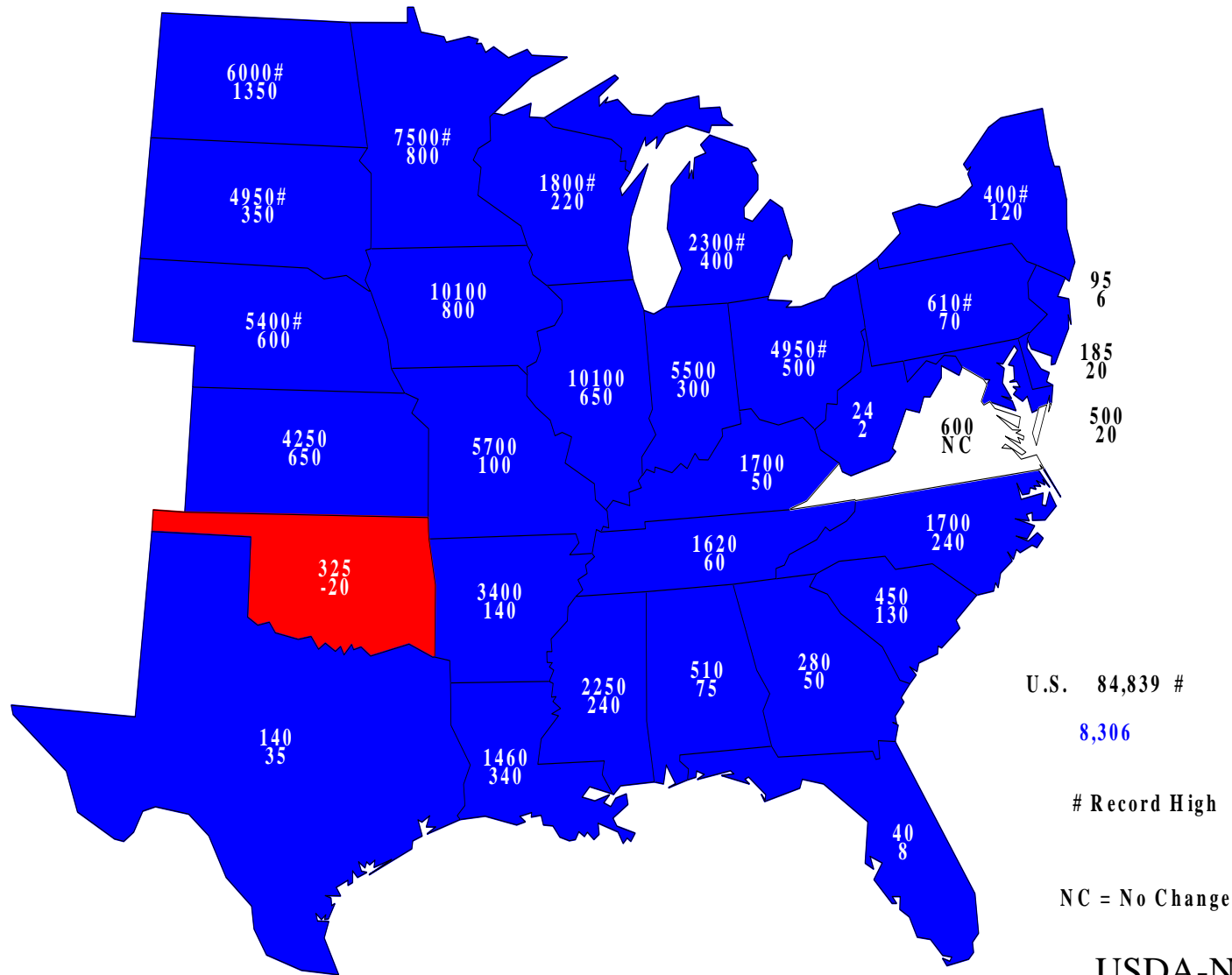
Million acres





2014 Soybeans Planted

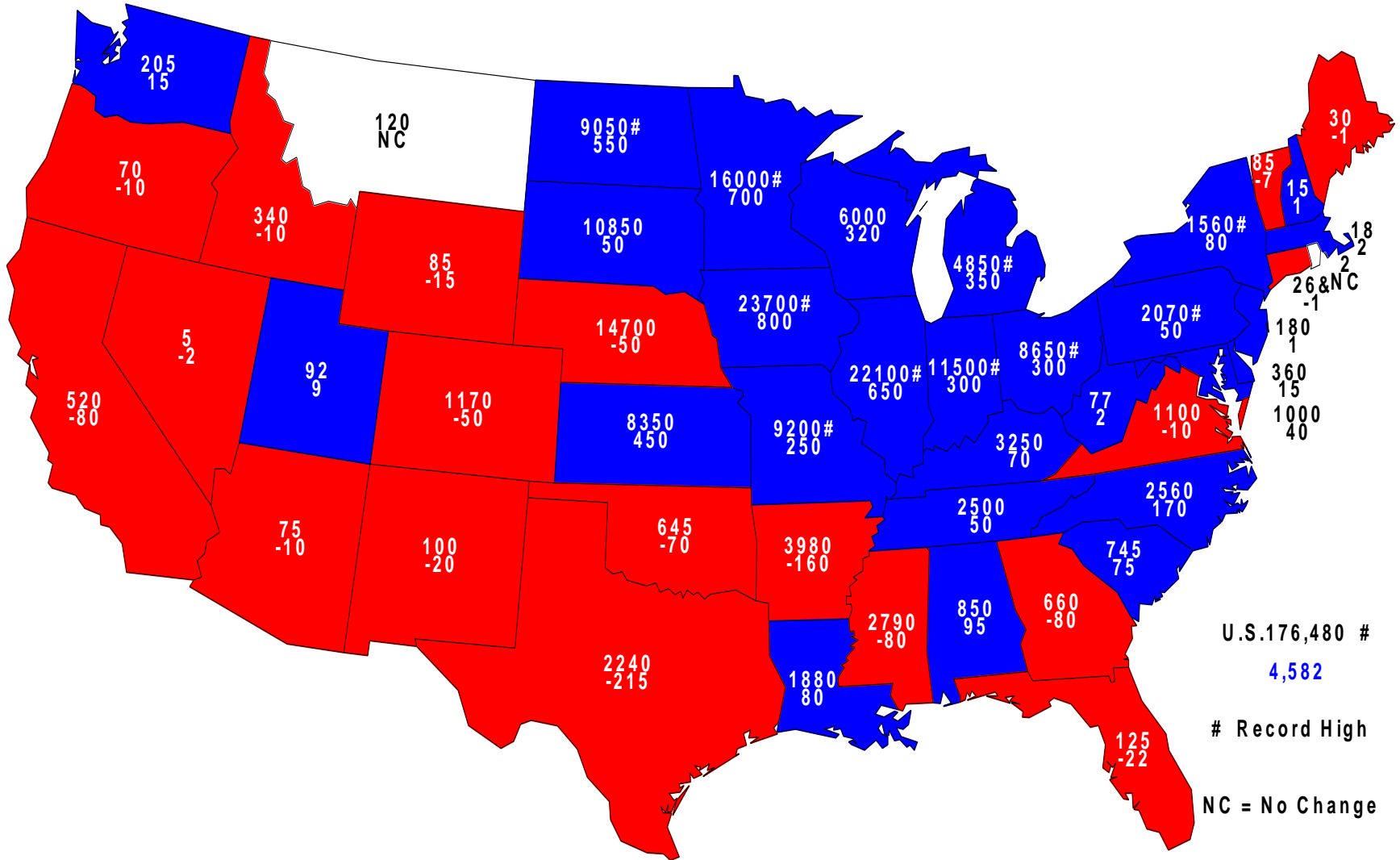
Acres (000) and Change From Previous Year





2014 Combined Corn & Soybeans Planted

Acres (000) and Change From Previous Year



U.S. 176,480 #

4,582

Record High

NC = No Change

USDA-NASS
6-30-14



June 2014 Acreage

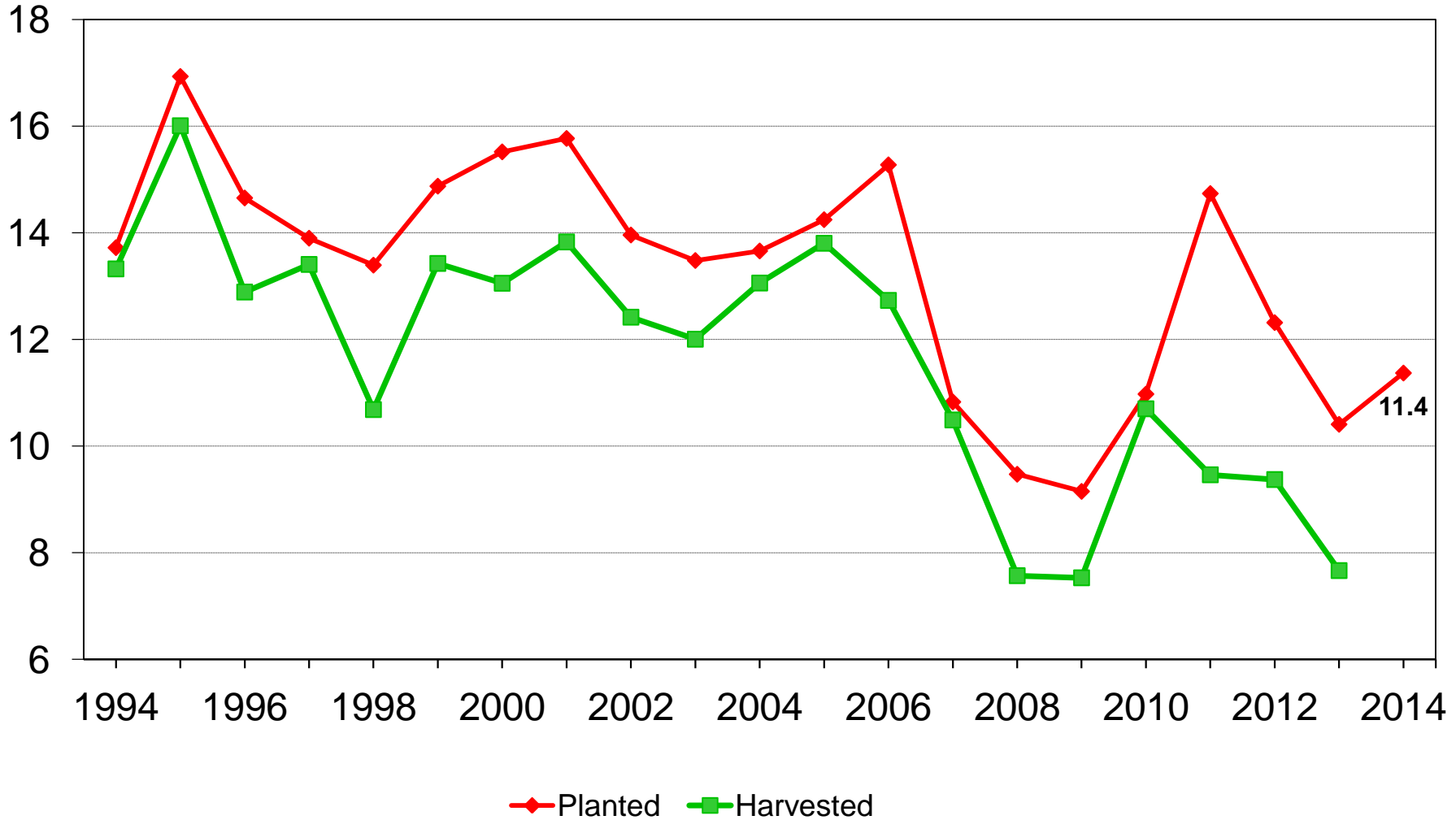
Crop	March 2014	June 2014	Change from March	Change from 2013
	<i>---Million acres---</i>		<i>---Percent---</i>	
Upland Cotton Planted	10.9	11.2	+2.3	+9.7
American Pima Planted	0.158	0.178	+12.7	-11.4
All Cotton Planted	11.1	11.4	+2.4	+9.2



U.S. All Cotton Acres



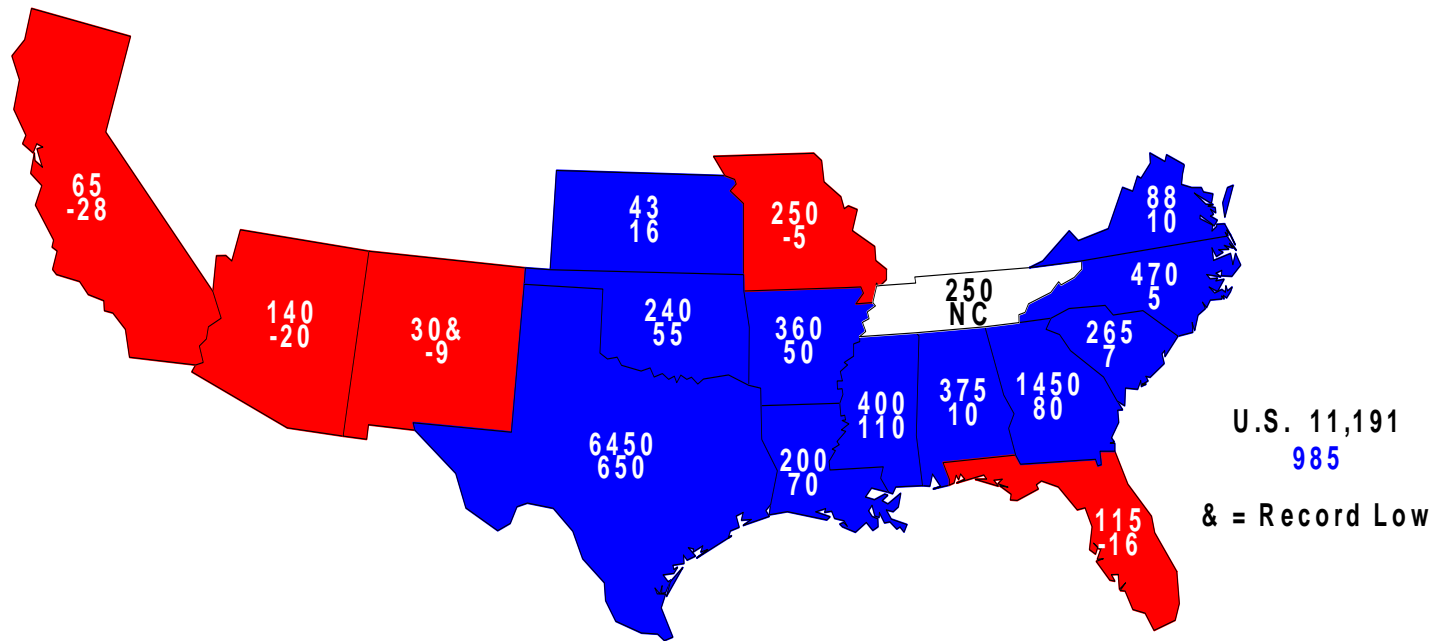
Million acres





2014 Upland Cotton Planted

Acres (000) and Change From Previous Year





June 2014 Acreage

Crop	March 2014	June 2014	Change from March	Change from 2013
	<i>---Million acres---</i>		<i>---Percent---</i>	
Winter Wheat				
Planted	42.0	42.3	+0.7	-1.8
Harvested	32.6 *	32.4	-0.5 *	+0.1
Other Spring Wheat				
Planted	12.0	12.7	+5.8	+9.6
Harvested	---	12.4	---	+9.4
Durum Wheat				
Planted	1.80	1.47	-18.3	-0.1
Harvested	---	1.42	---	-0.2
All Wheat				
Planted	55.8	56.5	+1.2	+0.6
Harvested	---	46.2	---	+2.4

* June 11, 2014

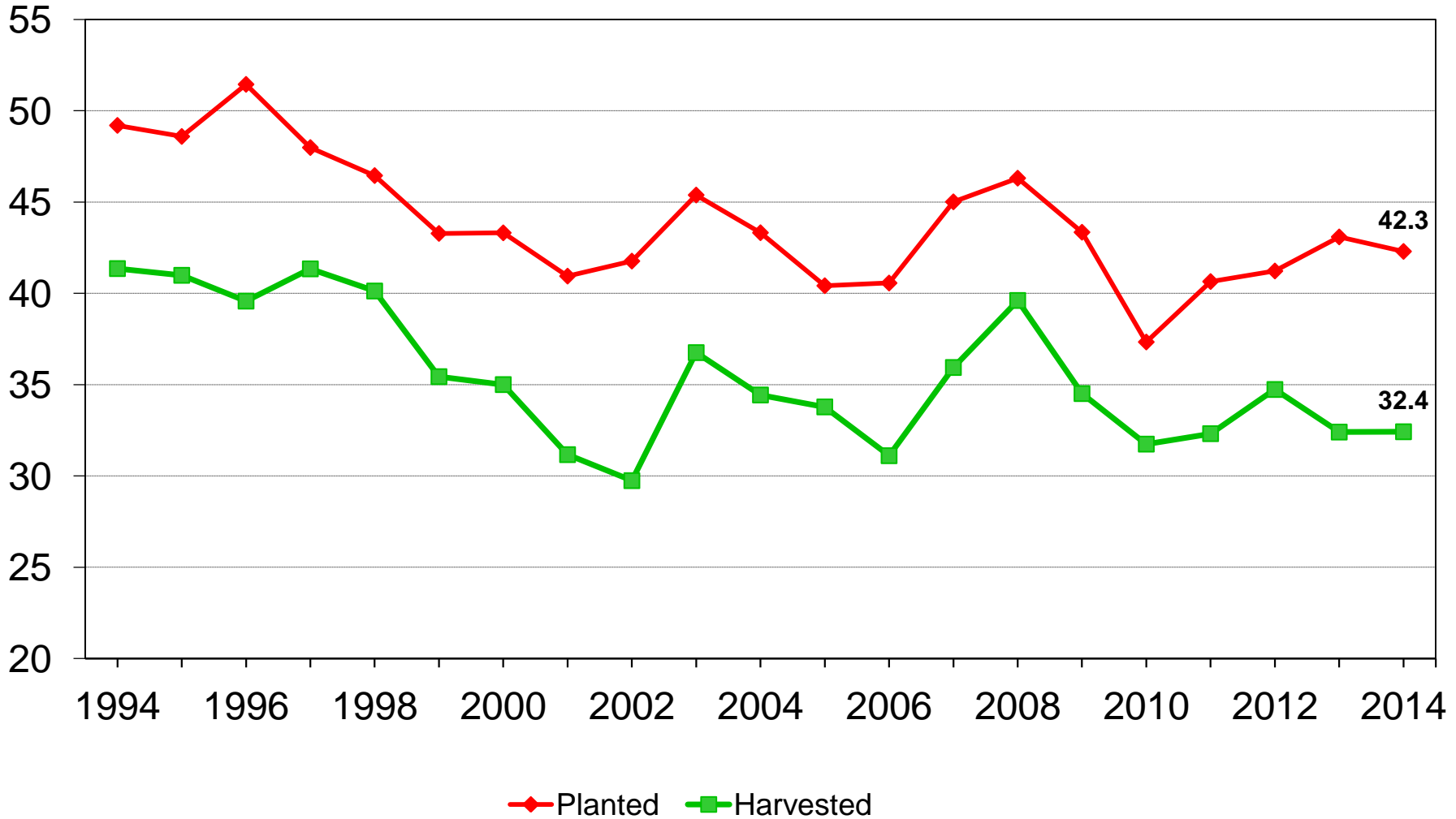
USDA-NASS
6-30-14



U.S. Winter Wheat Acres



Million acres

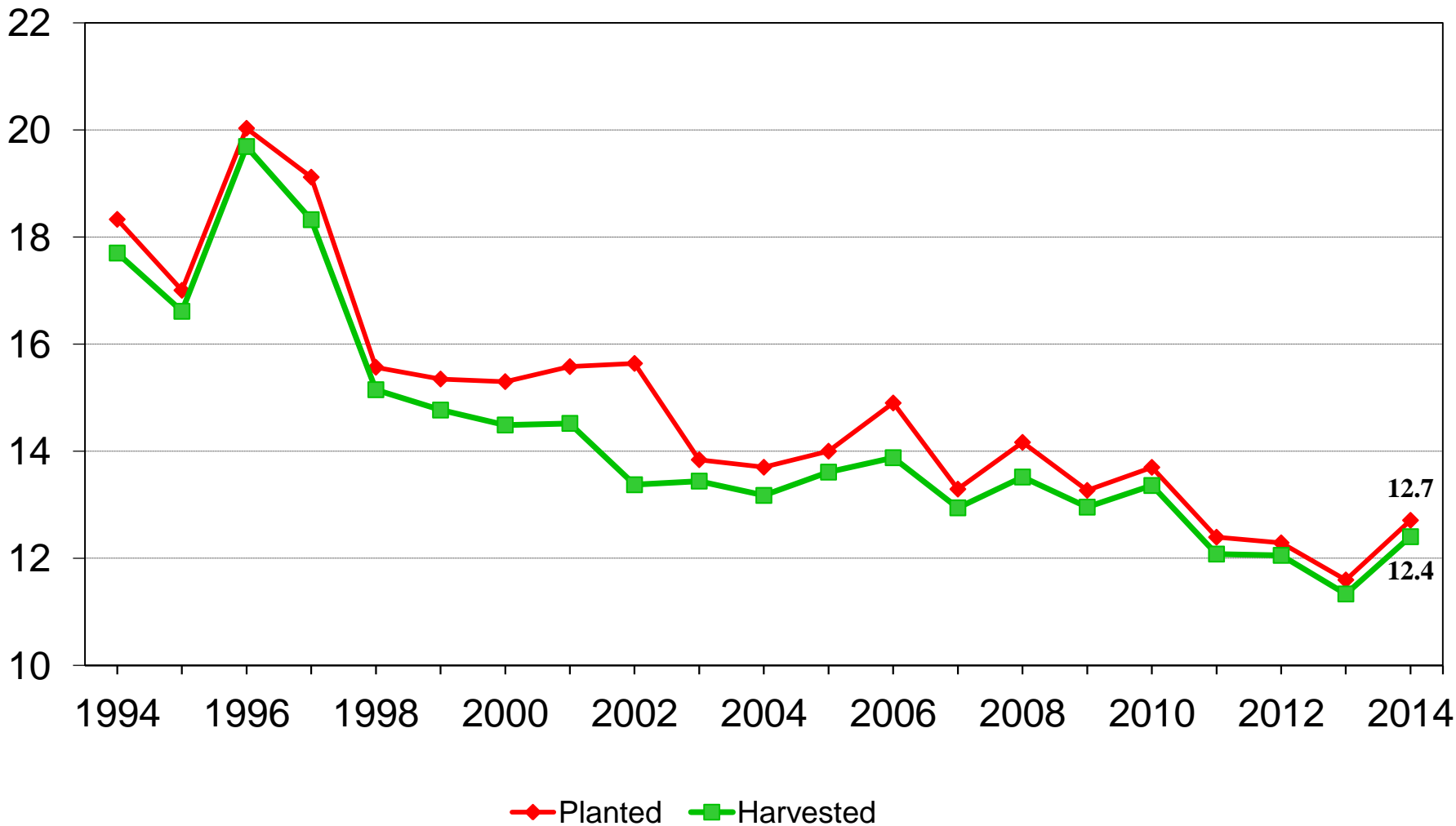




U.S. Other Spring Wheat Acres



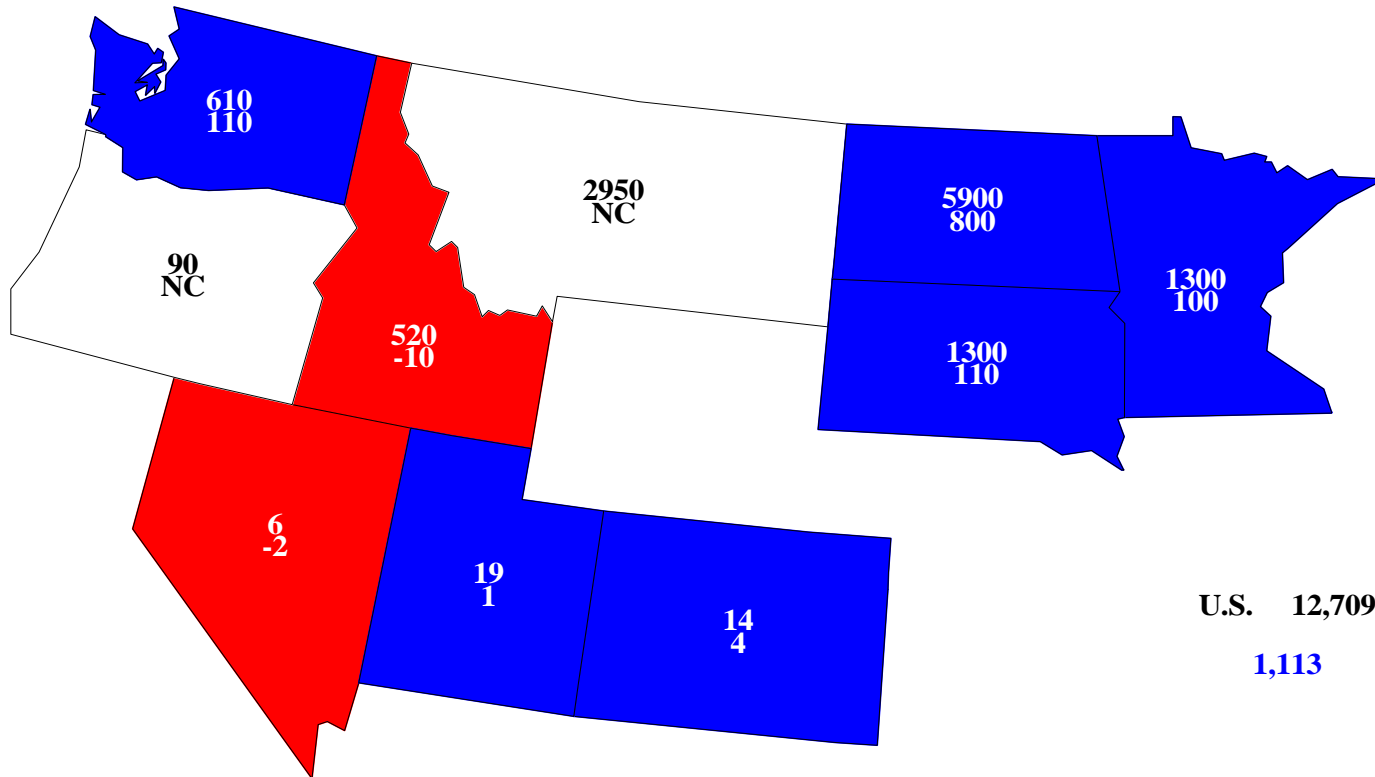
Million acres





Other Spring Wheat Planted, 2014

Acres (000) and Change From Previous Year



U.S. 12,709
1,113

NC = No Change

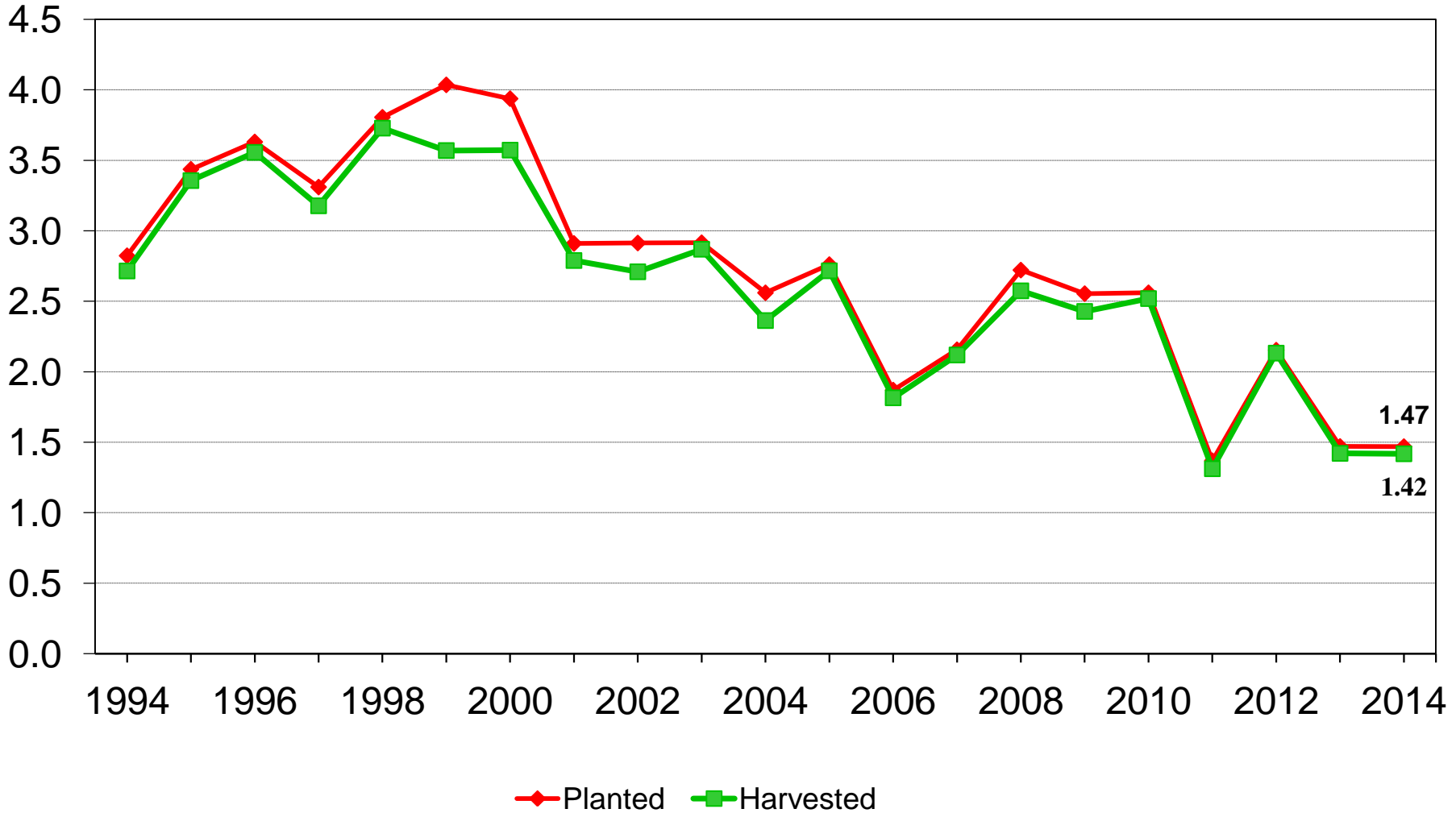
USDA-NASS
6-30-14



U.S. Durum Wheat Acres



Million acres





June 2014 Acreage

Crop	Planted Area		Change from March	Change from 2013
	March 2014	June 2014		
	<i>---Million acres---</i>		<i>---Percent---</i>	
Sorghum	6.68	7.47	+11.8	-7.3
Oats	2.79	3.03	+8.3	+0.6
Barley	3.17	3.09	-2.3	-11.2
All Hay ^{1/}	58.3	57.7	-1.1	-1.0
Alfalfa ^{1/}	---	18.2	---	2.4
Other ^{1/}	---	39.5	---	-2.6

^{1/} For harvest



June 2014 Acreage

Crop	Planted Area		Change from March	Change from 2013
	March 2014	June 2014		
	<i>---Million acres---</i>		<i>---Percent---</i>	
Rice	2.88	3.05	+5.9	+22.4
Peanuts	1.38	1.32	-4.4	+23.2
Sugarbeets	1.15	1.16	+0.6	-3.0
Sugarcane ^{1/}	---	.879	---	-3.5
Dry Beans	1.69	1.75	+3.7	+29.1
Potatoes, Fall	---	.955	---	+1.4
Potatoes, Summer	---	.053	---	+8.8
Sweet Potatoes	.126	.133	+5.6	+15.0
Tobacco ^{1/}	.362	.359	-0.8	+0.9

^{1/} For harvest



June 2014 Acreage

Crop	Planted Area		Change from March	Change from 2013
	March 2014	June 2014		
	<i>---Million acres---</i>		<i>---Percent---</i>	
Sunflower	1.59	1.71	+7.1	+8.2
Canola	1.74	1.75	+0.9	+30.0
Flaxseed	.326	.332	+1.8	+83.4
Safflower	---	.184	---	+4.6
Mustard Seed	---	.036	---	-20.0
Rye	---	1.43	---	-1.2
Proso Millet	---	.470	---	-34.7



Biotech Varieties

% of All Planted Acres

Crop	Herbicide Resistant Only		Insect Resistant (Bt) Only	
	2013	2014	2013	2014
Corn	14	13	5	4
Soybeans	93	94	---	---
Upland Cotton	15	12	8	5

Crop	Stacked Gene		All Biotech Varieties	
	2013	2014	2013	2014
Corn	71	76	90	93
Soybeans	---	---	93	94
Upland Cotton	67	79	90	96



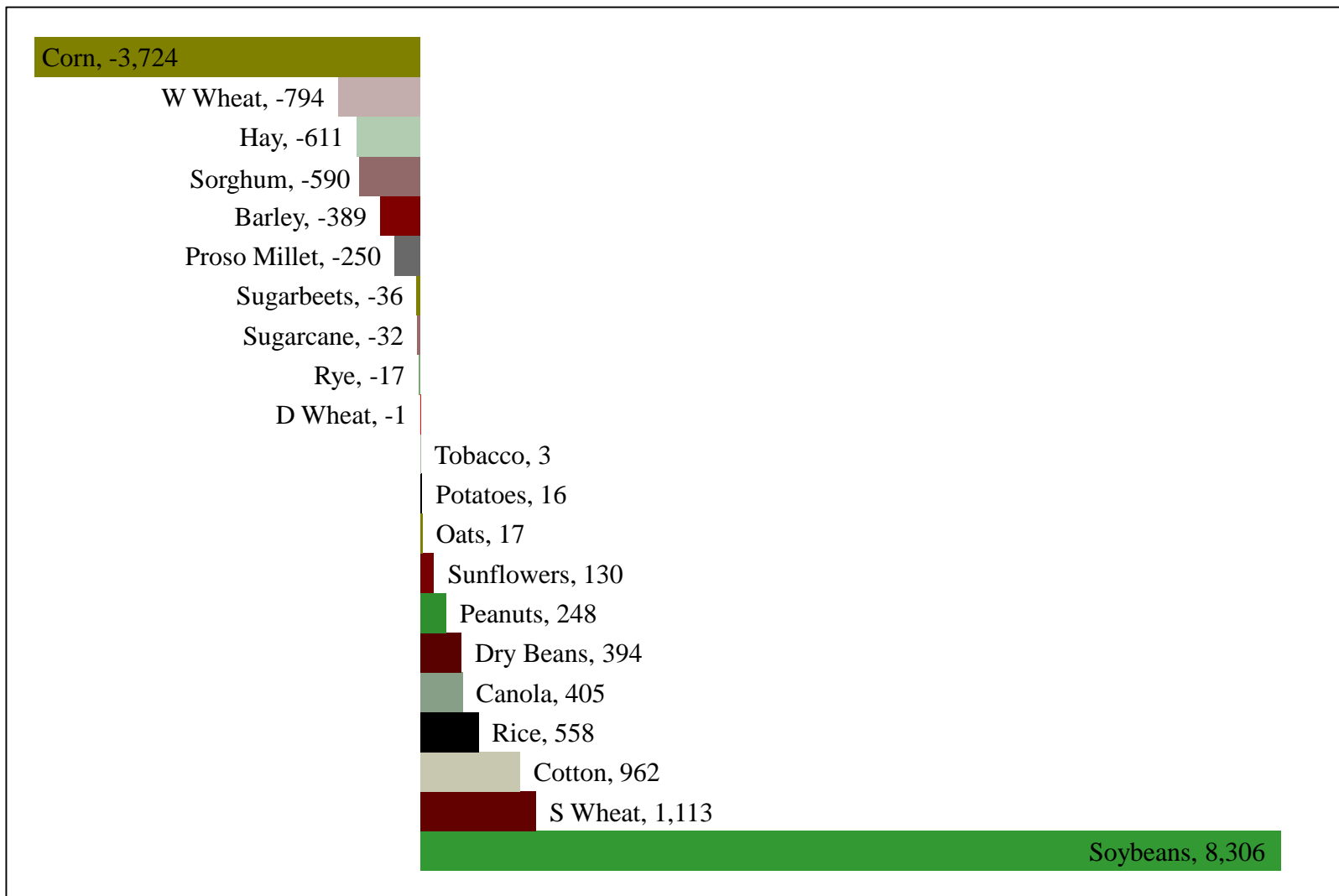
Percent of Acres Remaining To Be Planted

Crop	2012	2013	2014
		<i>---Percent---</i>	
Corn	0.7	3.4	2.3
Soybeans	6.5	26.9	13.2
Other Spring Wheat	0.0	6.3	7.0
Durum Wheat	<0.1	14.2	14.8



Change in Planted Acres (000)

2014 Compared With 2013

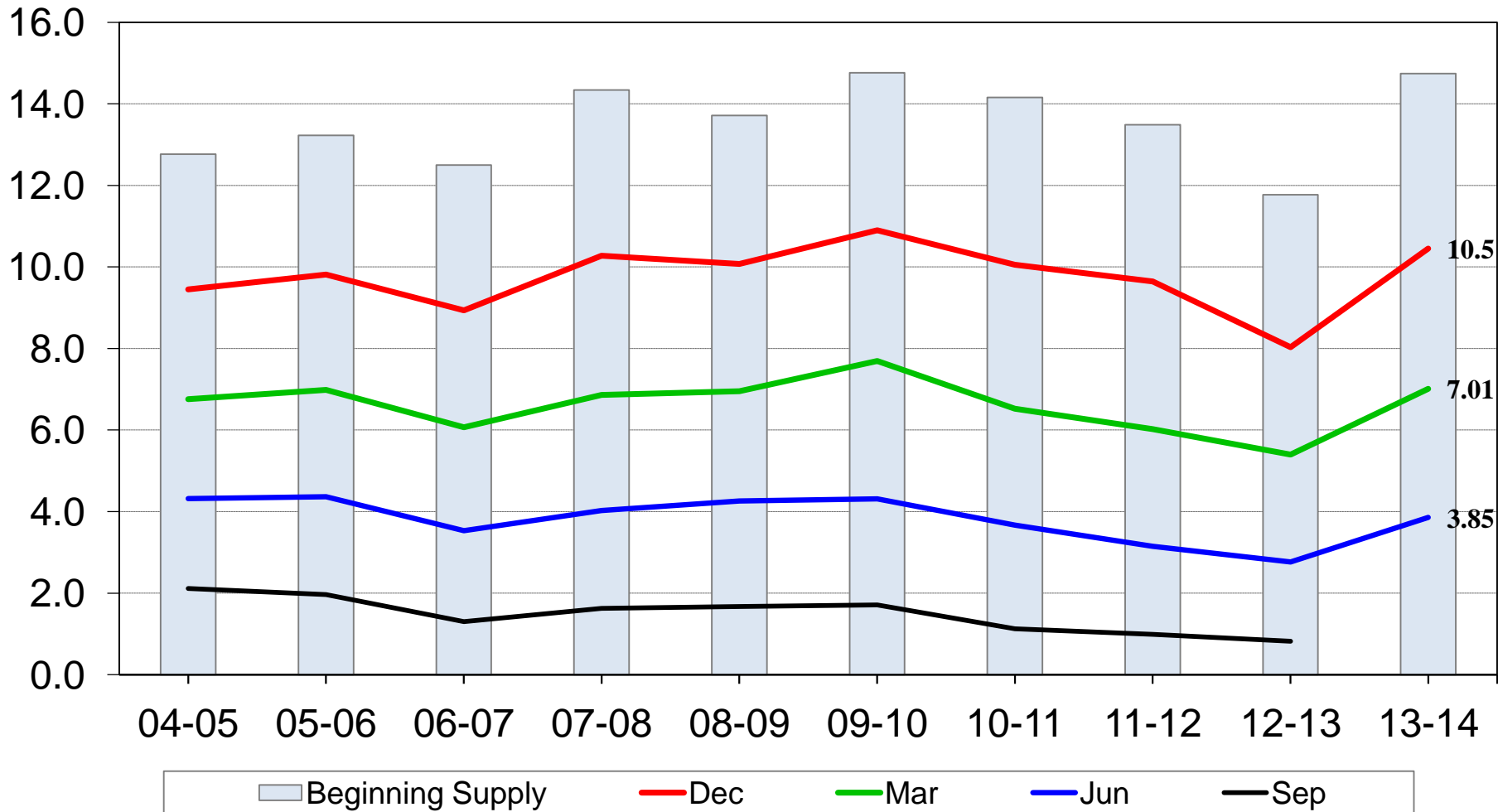




U.S. Corn Stocks



Billion bushels

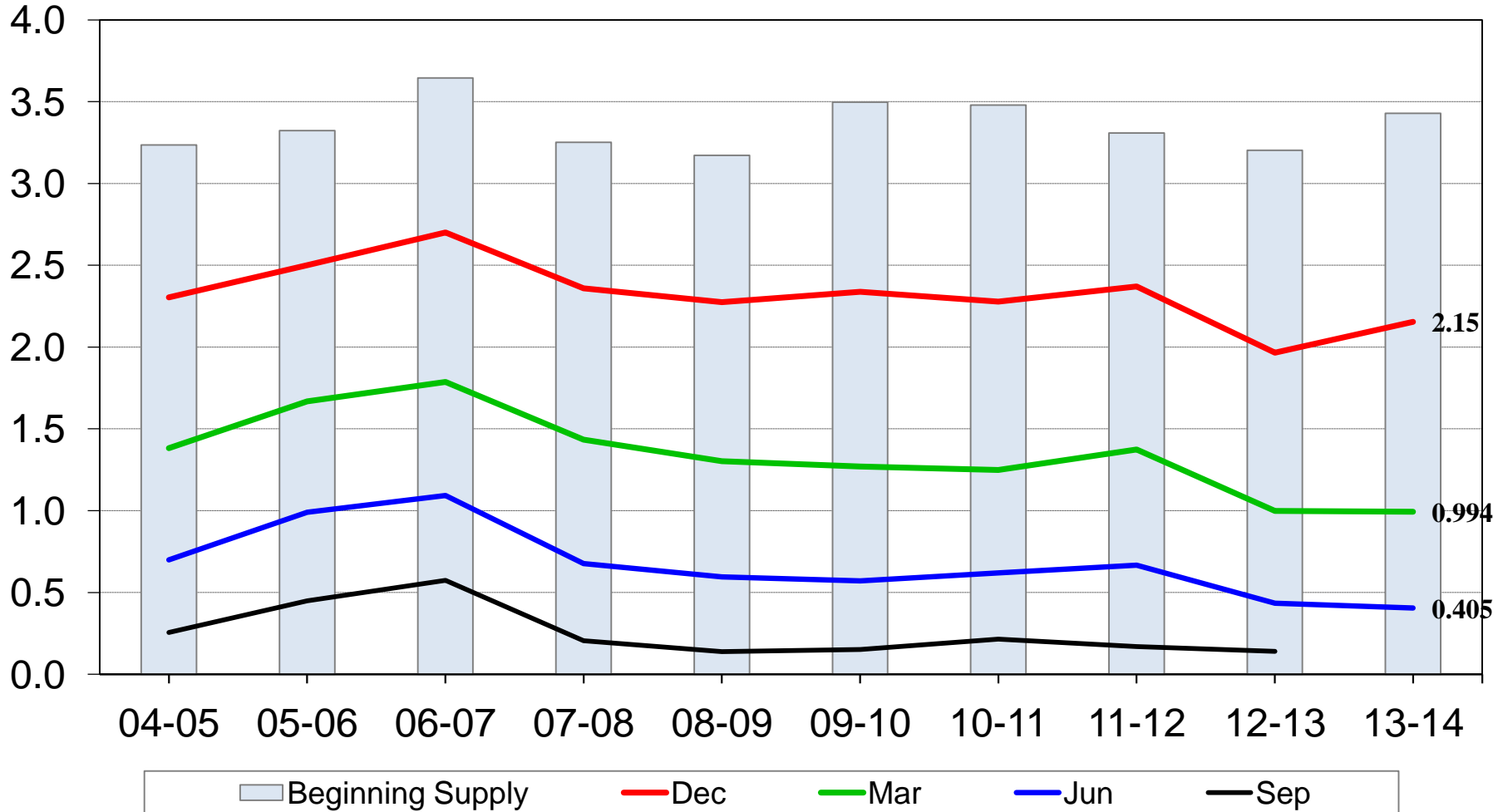




U.S. Soybean Stocks



Billion bushels

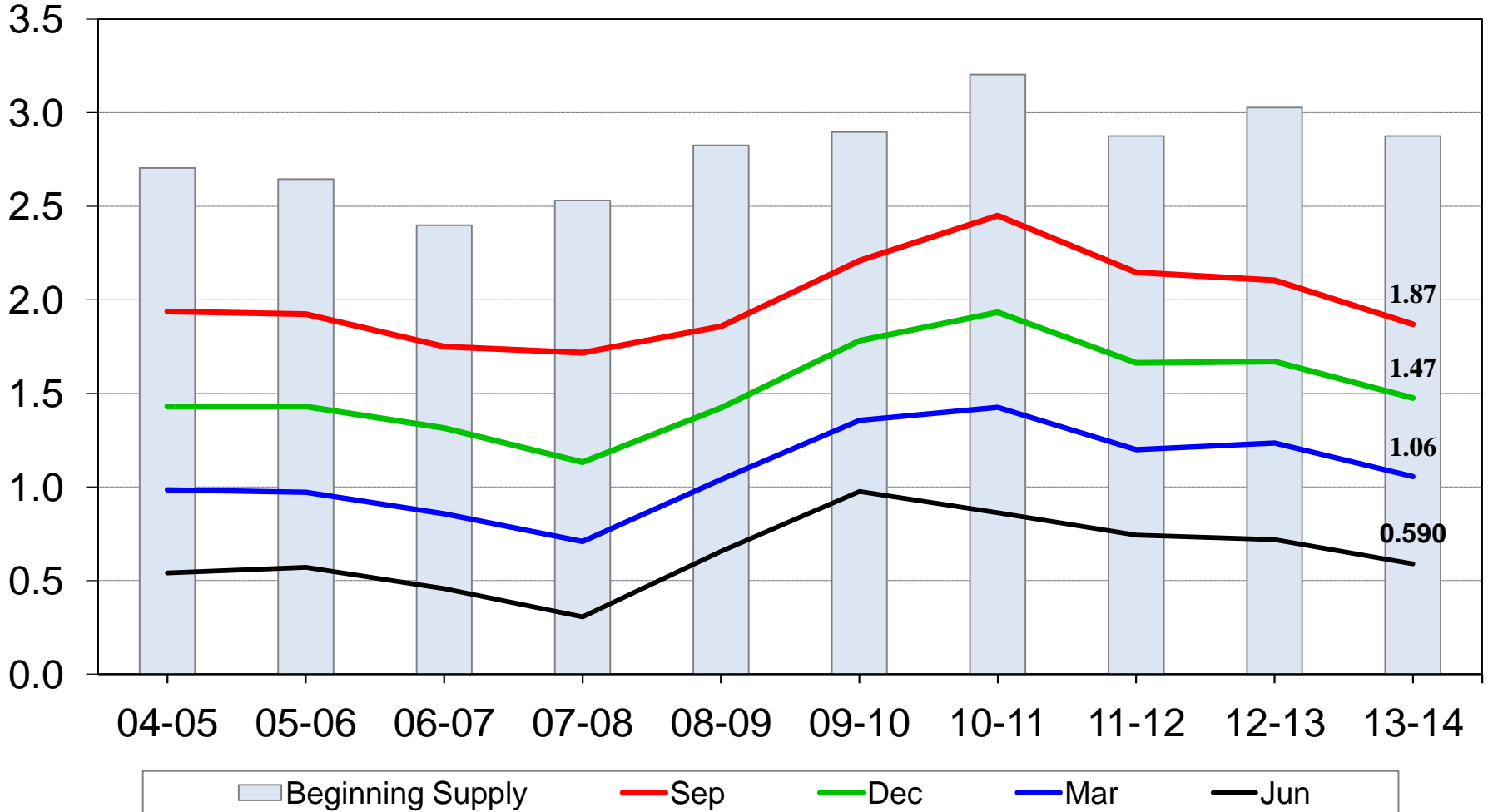




U.S. All Wheat Stocks



Billion bushels

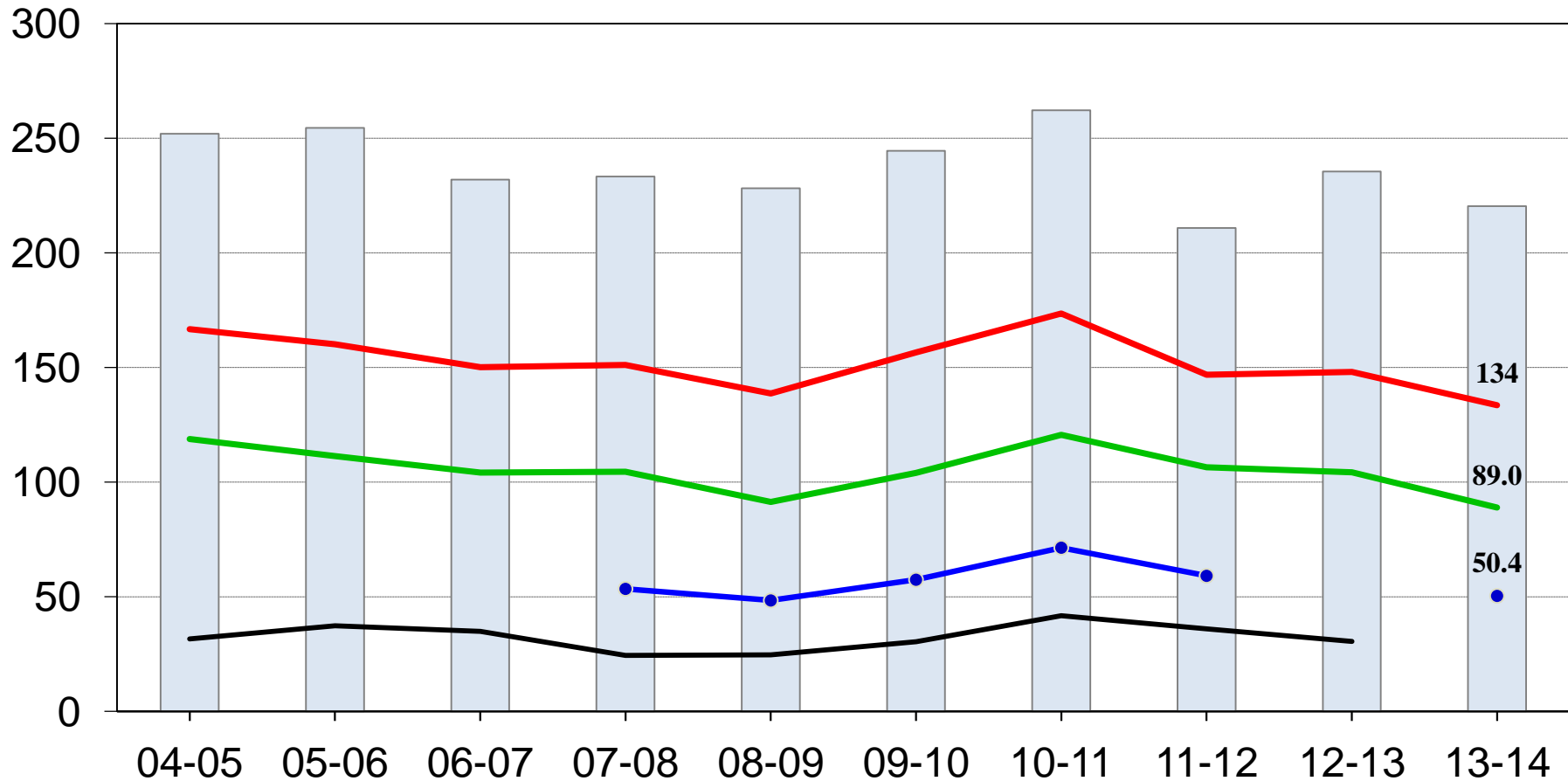




U.S. Rough Rice Stocks



Million cwt



Beginning Stocks Dec 1 Mar 1 Jun 1 Aug 1



United States Department of Agriculture
National Agricultural Statistics Service



Upcoming Reports

July 11	Crop Production
July 25	Cattle -Cattle on Feed
July 31	Agricultural Prices
August 12	Crop Production Cotton Ginnings



United States Department of Agriculture
National Agricultural Statistics Service



All Reports Available At

www.nass.usda.gov

For Questions

202-720-2127

800-727-9540

nass@nass.usda.gov