



United States Department of Agriculture
National Agricultural Statistics Service



SMALL GRAINS SUMMARY GRAIN STOCKS

Executive Summary

September 30, 2013

12:00 PM



Contents



Field Crops	Grain Stocks	Oilseed Stocks
Wheat	Corn	Sunflower
Barley	Soybeans	Safflower
Oats	Wheat	Mustard Seed
Rye	Barley	
	Oats	
	Sorghum	



Survey Overview

	September Ag Survey
Survey Type	Farmer Reported
Collection Method	Mail, Phone, Internet, Personal Interview
Crops Included	Barley, Oats, Wheat, Rye Stocks – All Crops
States	All except HI
Sample Size	65,956 farms
Collection Period	August 28 – September 16



Small Grains Annual Summary

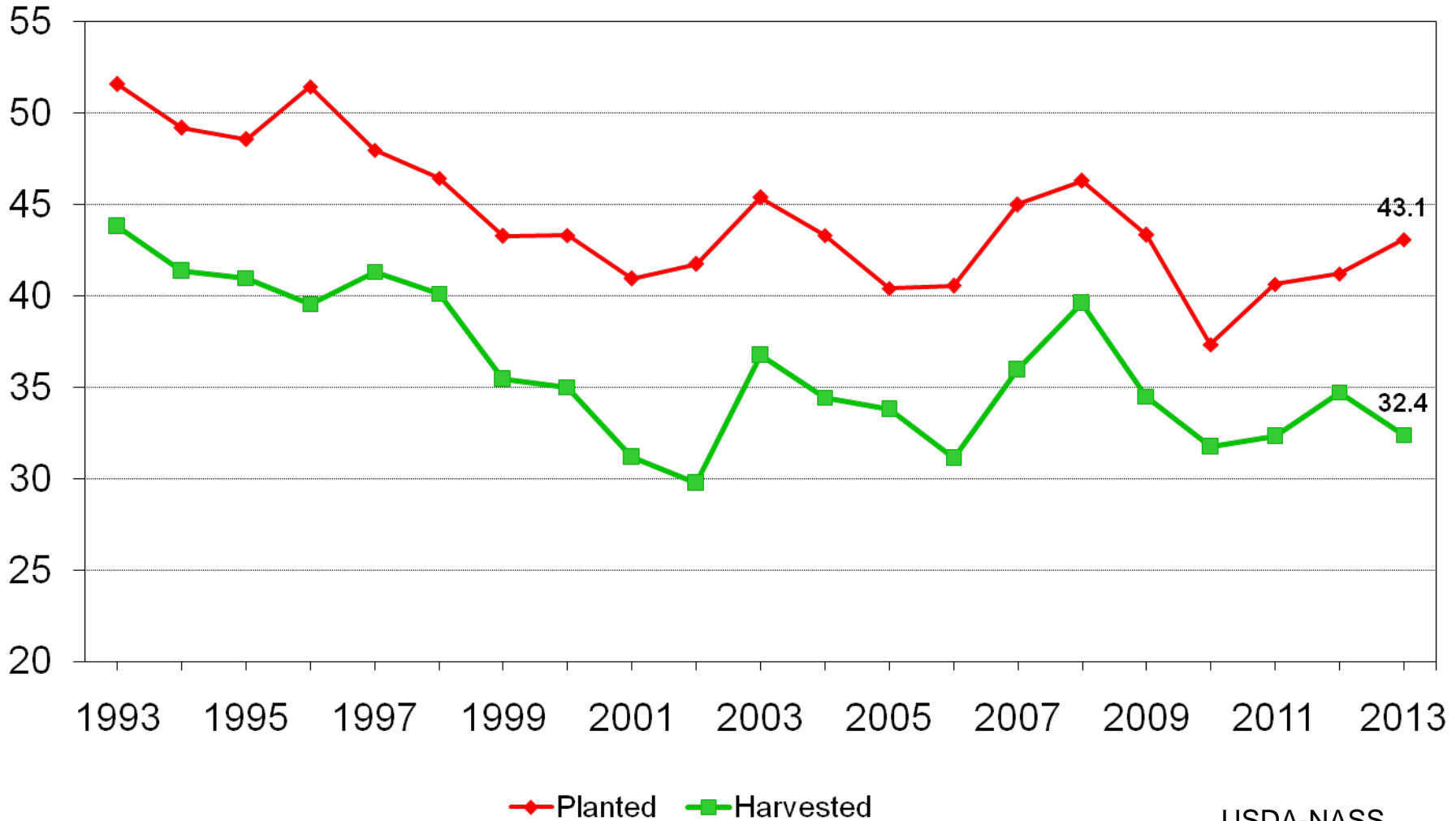
Crop	Unit	September 2013	% Change from Previous Forecast	% Change from Previous Season
Winter Wheat				
Harvested	Mil Ac	32.4	+0.4	-6.7
Yield	Bu/Ac	47.4	-0.8	+0.2
Production	Bil Bu	1.53	-0.5	-6.5
Other Spring				
Harvested	Mil Ac	11.4	-5.1	-5.8
Yield	Bu/Ac	46.8	+9.3	+4.0
Production	Mil Bu	532	+4.0	-1.9
Durum				
Harvested	Mil Ac	1.42	-5.4	-33.3
Yield	Bu/Ac	43.3	+8.0	+11.6
Production	Mil Bu	61.5	+2.2	-25.7
All Wheat				
Production	Bil Bu	2.13	+0.6	-6.1



U.S. Winter Wheat Acres



Million acres



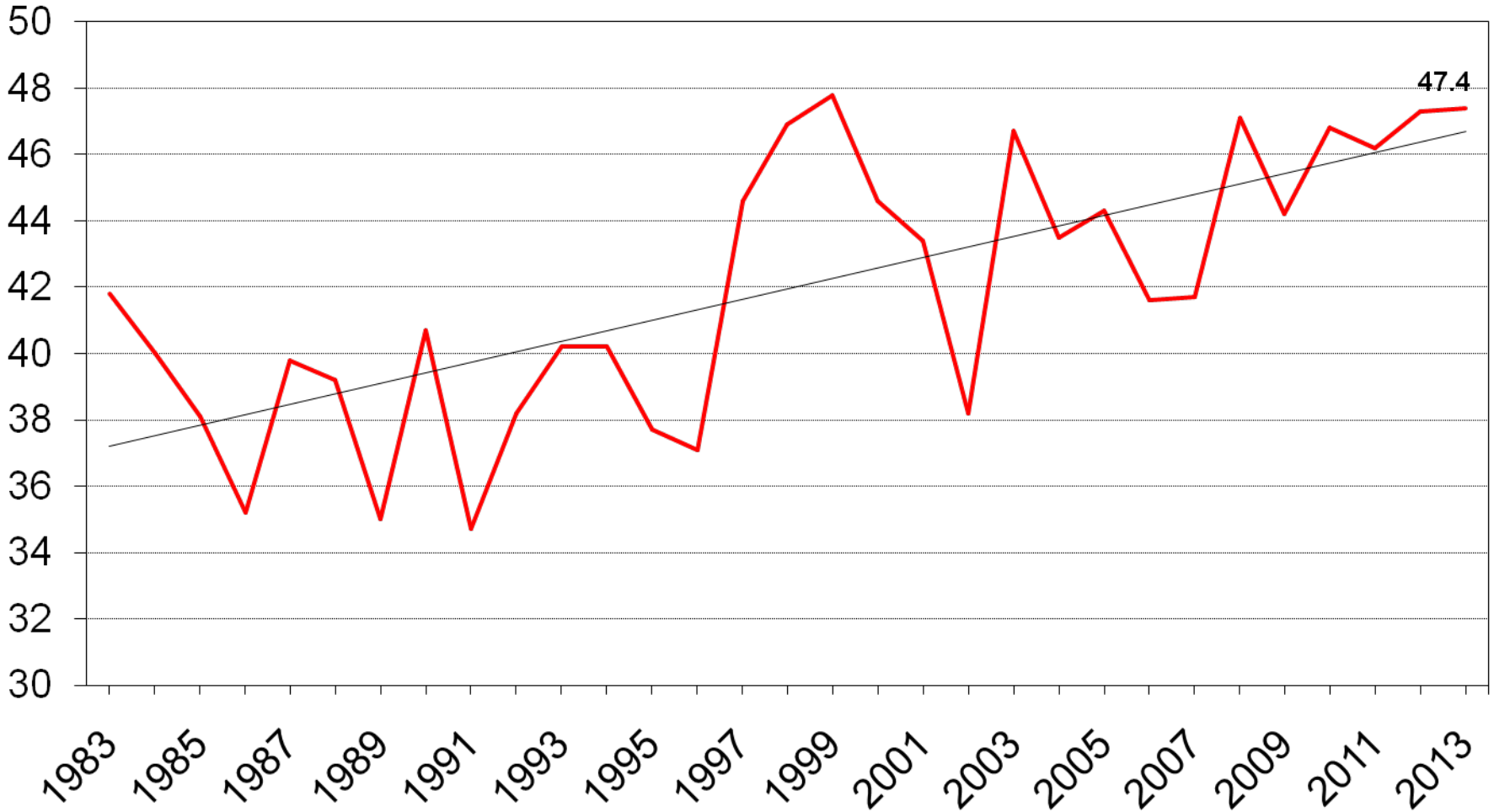
USDA-NASS
9-30-13



U.S. Winter Wheat Yield



Bushels/acre



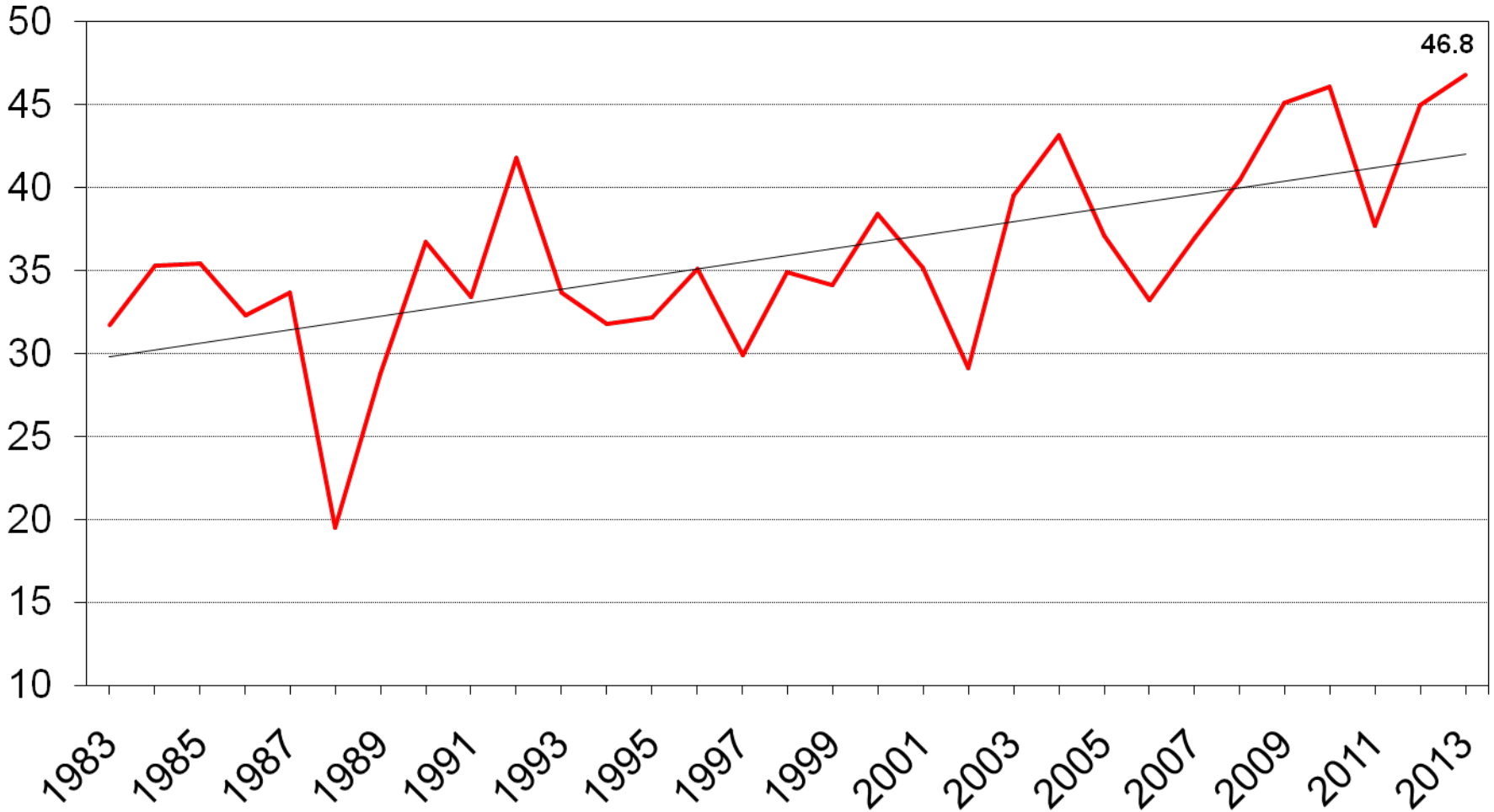
USDA-NASS
9-30-13



U.S. Other Spring Wheat Yield



Bushels/acre

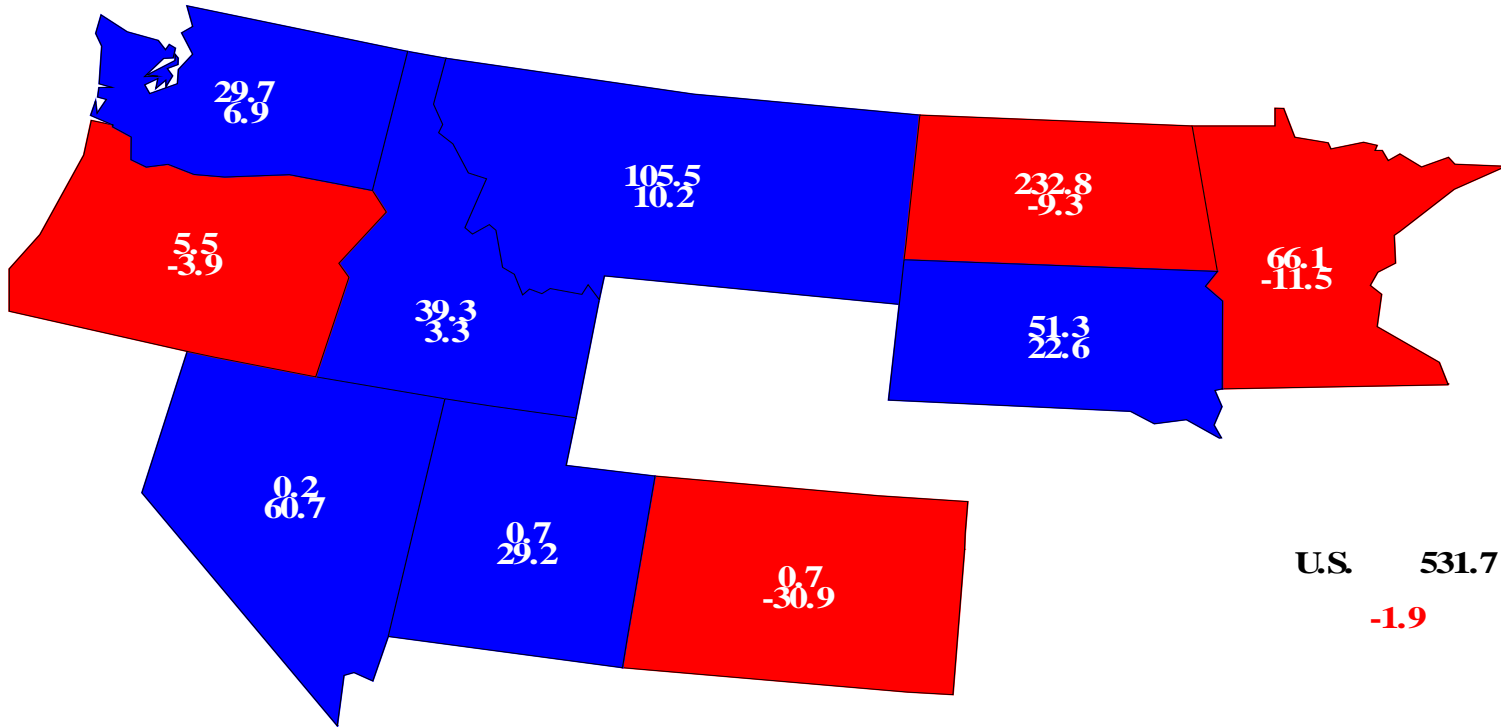


USDA-NASS
9-30-13



Other Spring Wheat Production, 2013

Million Bu. and Percent Change From Previous Year



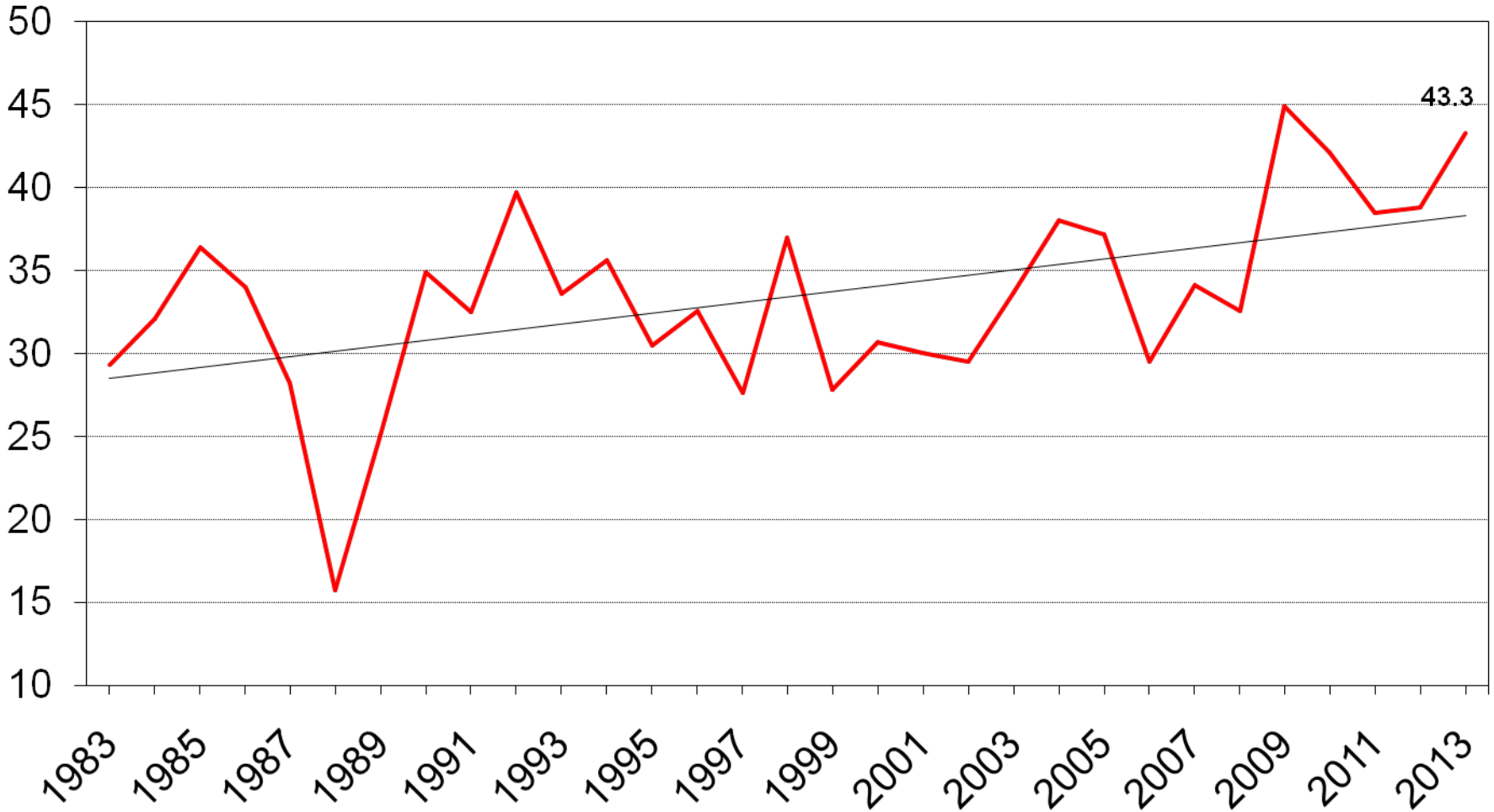
U.S. 531.7
-1.9



U.S. Durum Wheat Yield



Bushels/acre

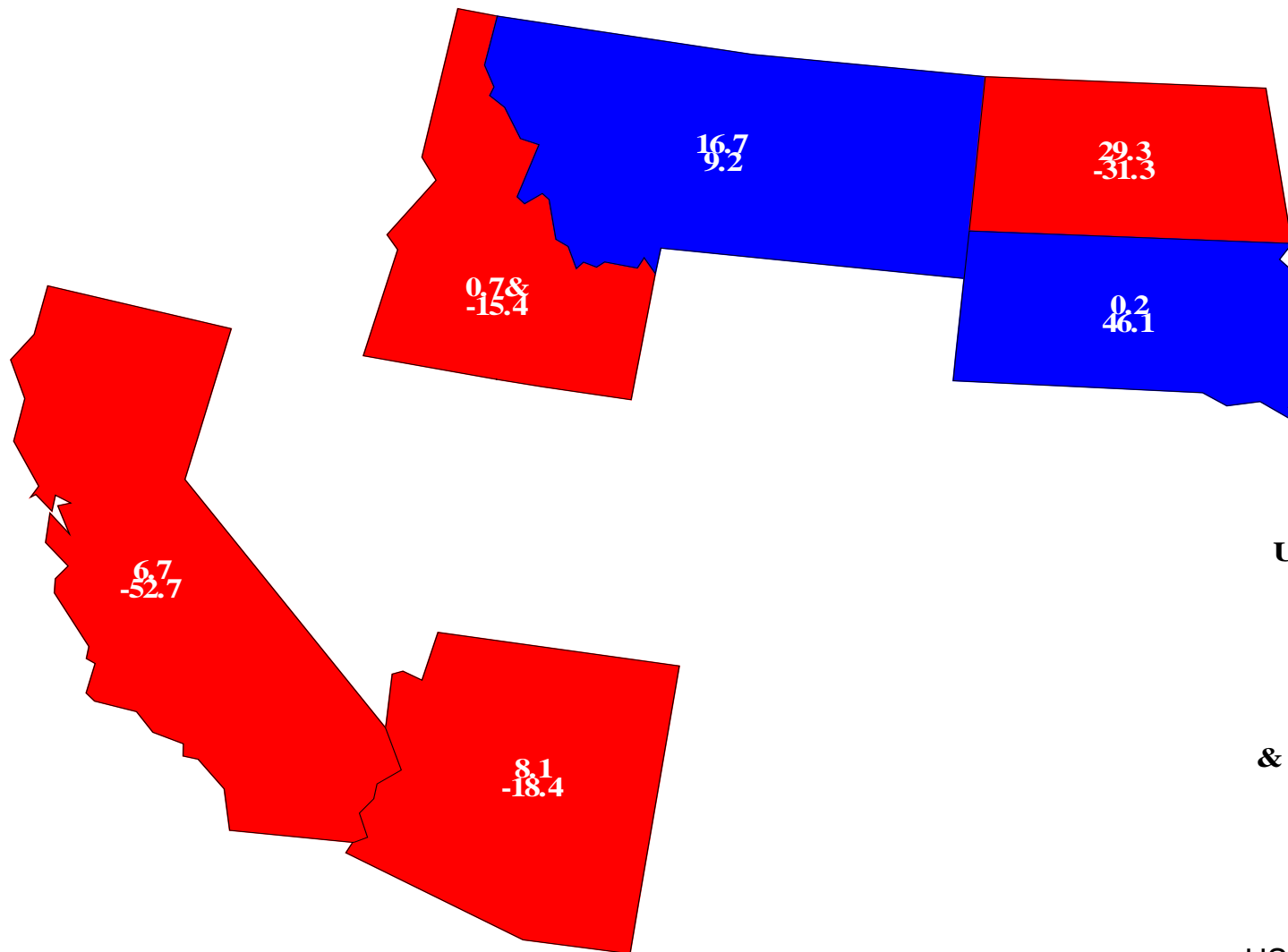


USDA-NASS
9-30-13



Durum Wheat Production, 2013

Million Bu. and Percent Change From Previous Year



U.S. 61.5

-25.7

& Record Low

USDA-NASS

9-30-13



Small Grains Annual Summary

Crop	Unit	September 2013	% Change from Previous Forecast	% Change from Previous Season
Barley				
Harvested	Mil Ac	3.00	-2.4	-7.5
Yield	Bu/Ac	71.7	+1.4	+5.6
Production	Mil Bu	215.1	-1.1	-2.4
Oats				
Harvested	Mil Ac	1.03	-13.8	-1.3
Yield	Bu/Ac	64.0	+1.7	+4.4
Production	Mil Bu	66.0	-12.2	+3.1
Rye				
Harvested	Thou Ac	278	-13.4	+12.1
Yield	Bu/Ac	27.6	---	-1.4
Production	Mil Bu	7.67	---	+10.4



Small Grains Annual Summary

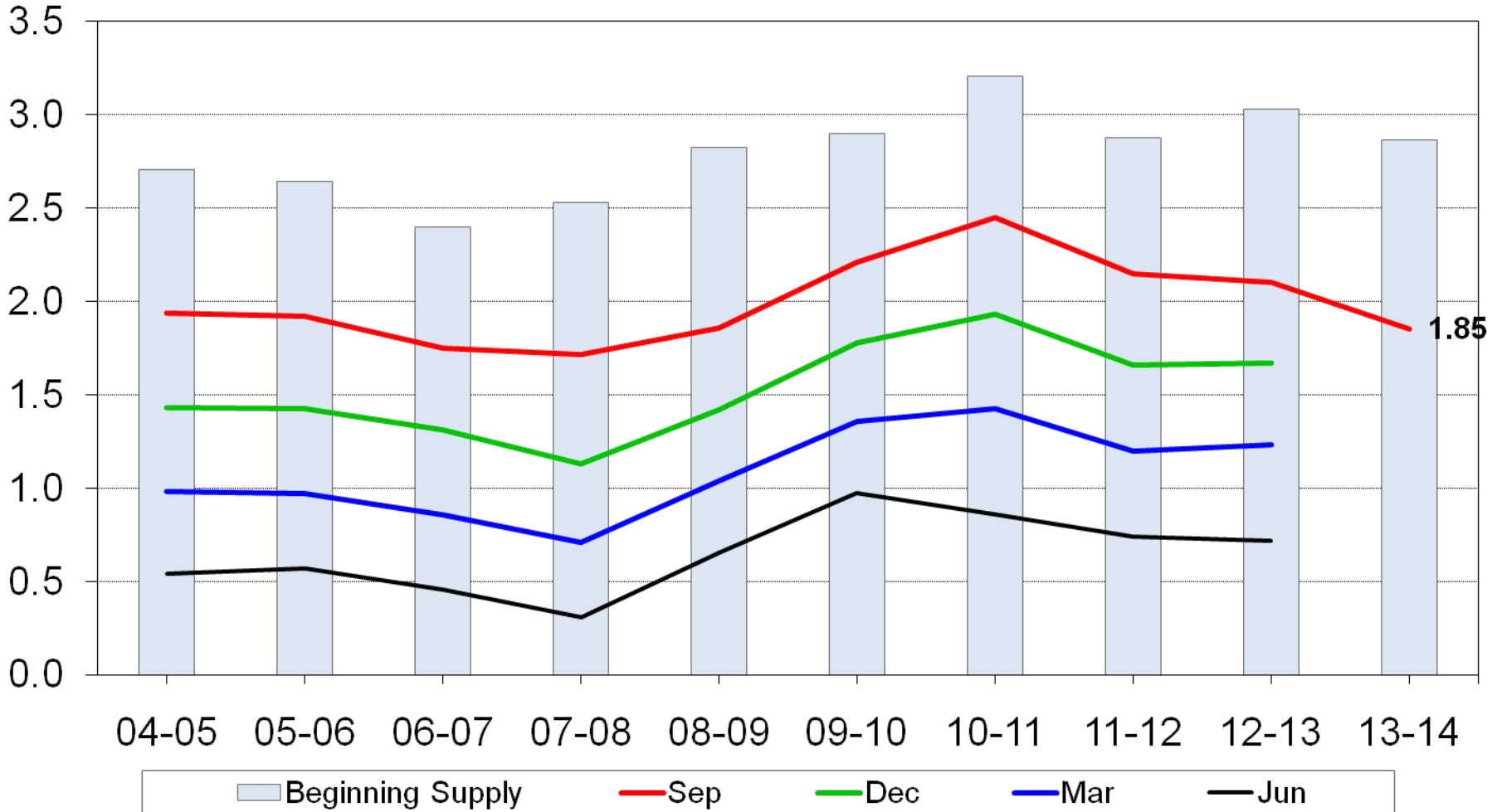
Crop	2011	2012	2013
	% of Acres Unharvested	% of Acres Unharvested	% of Acres Unharvested
Other Spring Wheat	30.5	2.2	22.0
Durum Wheat	62.1	7.0	58.4
Barley	25.9	3.4	13.5
Oats	17.9	7.8	18.4



U.S. All Wheat Stocks



Billion bushels



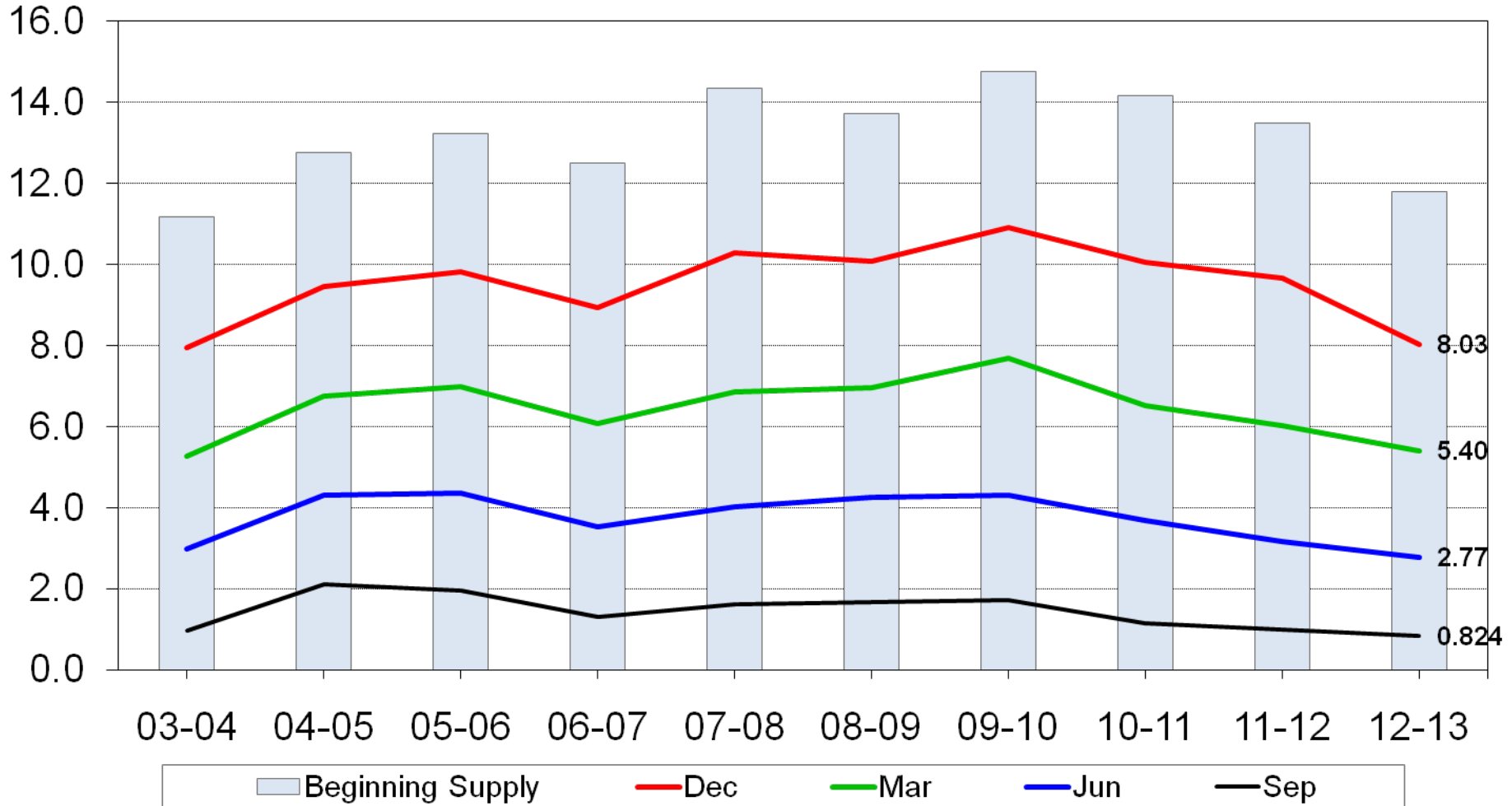
USDA-NASS
9-30-13



U.S. Corn Stocks



Billion bushels



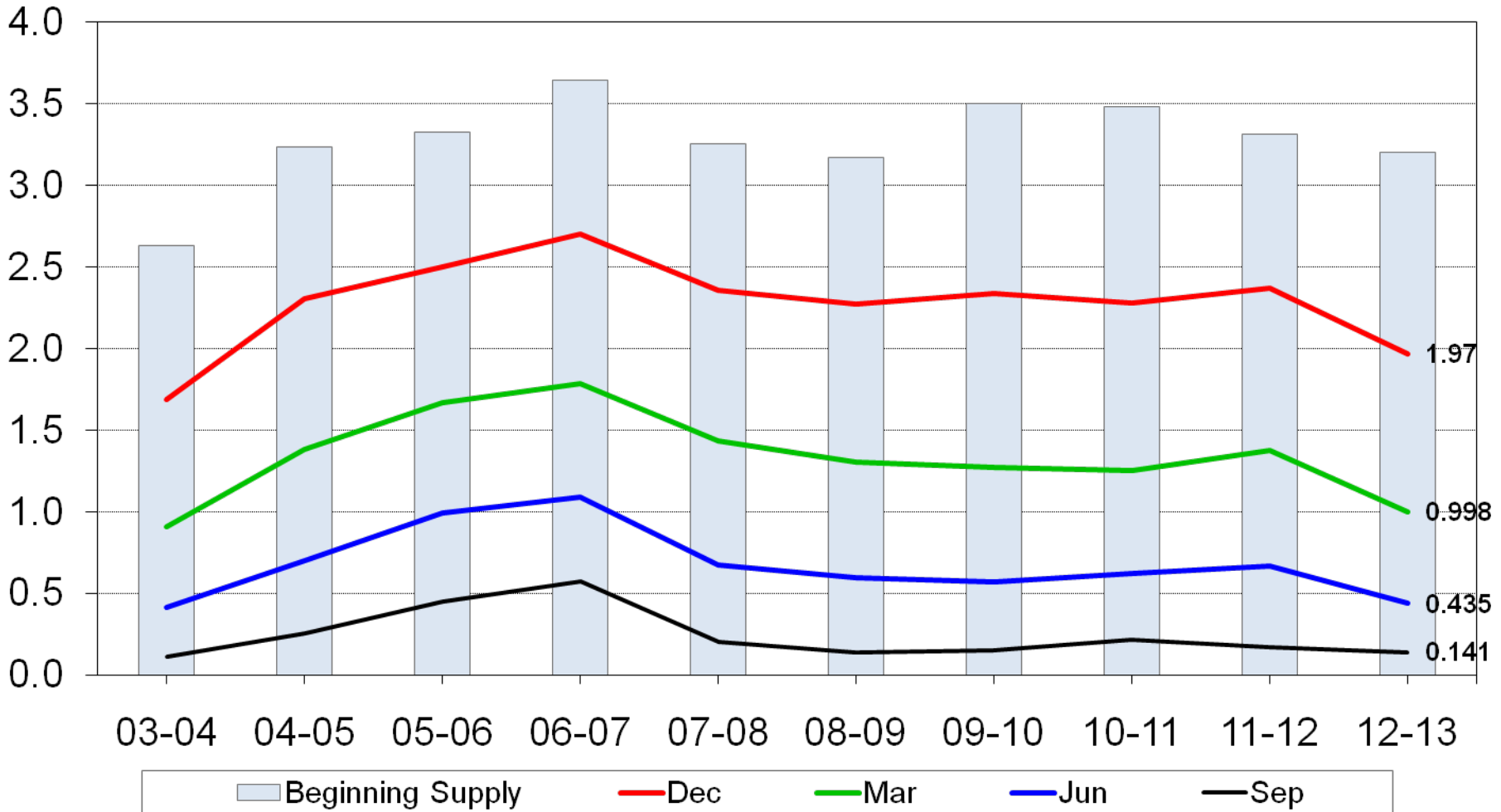
USDA-NASS
9-30-13



U.S. Soybean Stocks



Billion bushels



USDA-NASS
9-30-13



2012 Soybean Crop



	Previous Estimates	Sept 30 Estimates	Change
	--- Mil Bushels ---		Mil Bu
Sept 1, 2012, Beginning Stocks	169	169	---
2012 Production	3,015	3,034	+19
Imports	*40	*40	---
Total Supply	3,224	3,243	+19
Crushings	*1,690	*1,690	---
Exports	*1,315	*1,315	---
Seed	*90	*90	---
Measured Disappearance	*3,095	*3,095	---
Ending Stocks	*125	141	+16
Residual	*5	7	+2

*WAOB Forecasting September WASDE Report

USDA-NASS
9-30-13



September 1, 2013 Grain Stocks

Crop	Unit	September 2013	% Change from September 2012
Barley	Mil Bu	196.4	-0.2
Oats	Mil Bu	63.4	-25.3
Sorghum	Mil Bu	15.0	-34.5



September 30, 2013 Oilseed Stocks

Crop	Unit	September 2013	% Change from September 2012
All Sunflower	Mil Lbs	339	+77.6
Safflower	Mil Lbs	5.27	-24.9
Mustard Seed	Mil Lbs	9.40	-1.0



United States Department of Agriculture
National Agricultural Statistics Service



Upcoming Reports

October 11 Crop Production
 Cotton Ginnings

October 21 USDA Data User's Meeting

October 29 Rice Stocks

October 31 Agricultural Prices



United States Department of Agriculture
National Agricultural Statistics Service



All Reports Available At

www.nass.usda.gov

For Questions

202-720-2127

800-727-9540

nass@nass.usda.gov