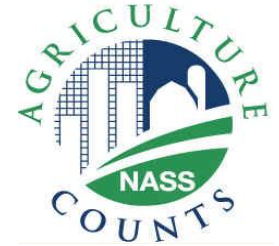




United States Department of Agriculture
National Agricultural Statistics Service



HOGS & PIGS INVENTORY

Executive Briefing

September 1, 2013

September Hogs and Pigs

Data Collection Period:

August 31- September 17

Sample Size:

7,529

Collection Methods

Phone, mail, internet, personal interview

Main Data Items

Total Inventory - by class, weight group, and quarter
Sows Farrowing, pig crop, and pigs per litter

U.S. Hogs & Pigs Revisions

		Initial Estimate	Previous Revision	Current Revision	Net Revision	Current Estimate
Mar 2013	All Hogs and Pigs	65.9 million	-260,000 -0.4%	-430,000 -0.7%	-690,000 -1.0%	65.2 million
	Pig Crop	29.0 million		-357,000 -1.2%	-357,000 -1.2%	28.7 million
Jun 2013	All Hogs and Pigs	66.6 million		-45,000 -0.1%		66.6 million



U.S. Hogs & Pigs Inventory

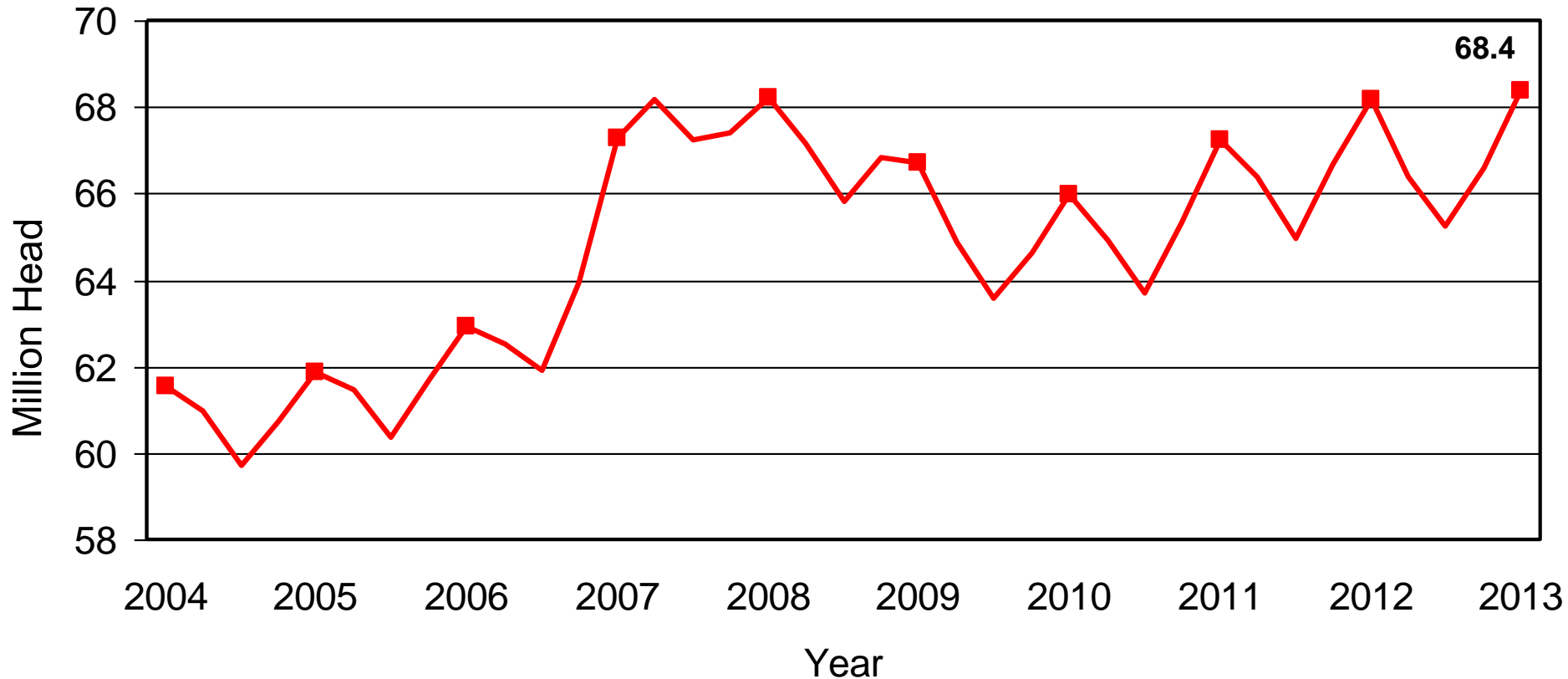
September 1, 2013

Inventory Items	(000) Hd	% PY
All Hogs & Pigs	68,360	100.3
Breeding Hogs	5,814	100.4
Market Hogs	62,546	100.3
Jun – Aug Pig Crop	30,210	101.9
Sows Farrowing	2,925	99.9
Litter Rate	Number	% PY
Jun – Aug 2013	10.33	102.0
Farrowing Intentions	(000) Hd	% PY
Sep – Nov 2013	2,900	100.4
Dec 2013 – Feb 2014	2,870	100.9



U.S. Quarterly Hogs and Pigs Inventory

September 1, 2013

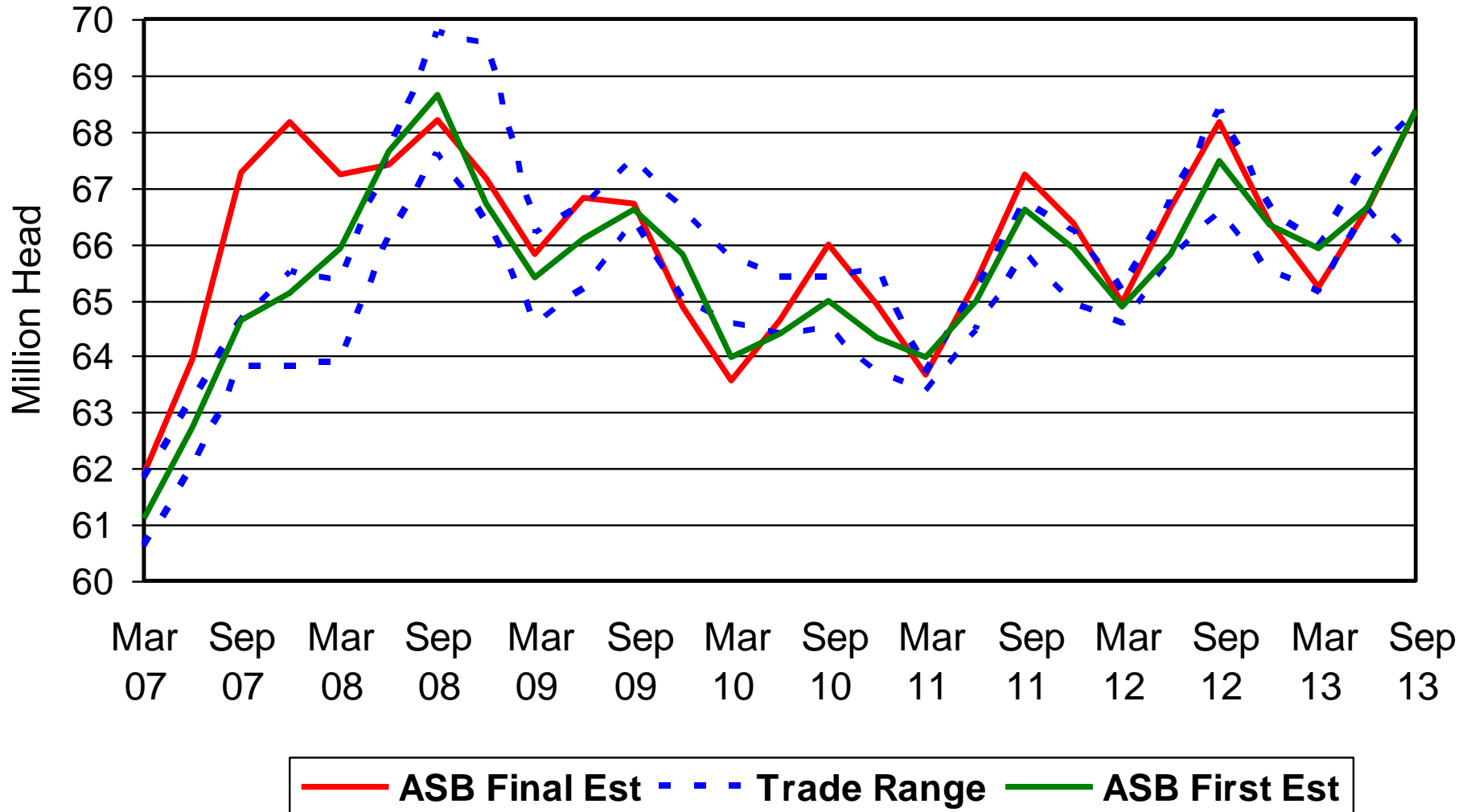


NASS Estimates Compared to Trade Expectations

Percent of Previous Year

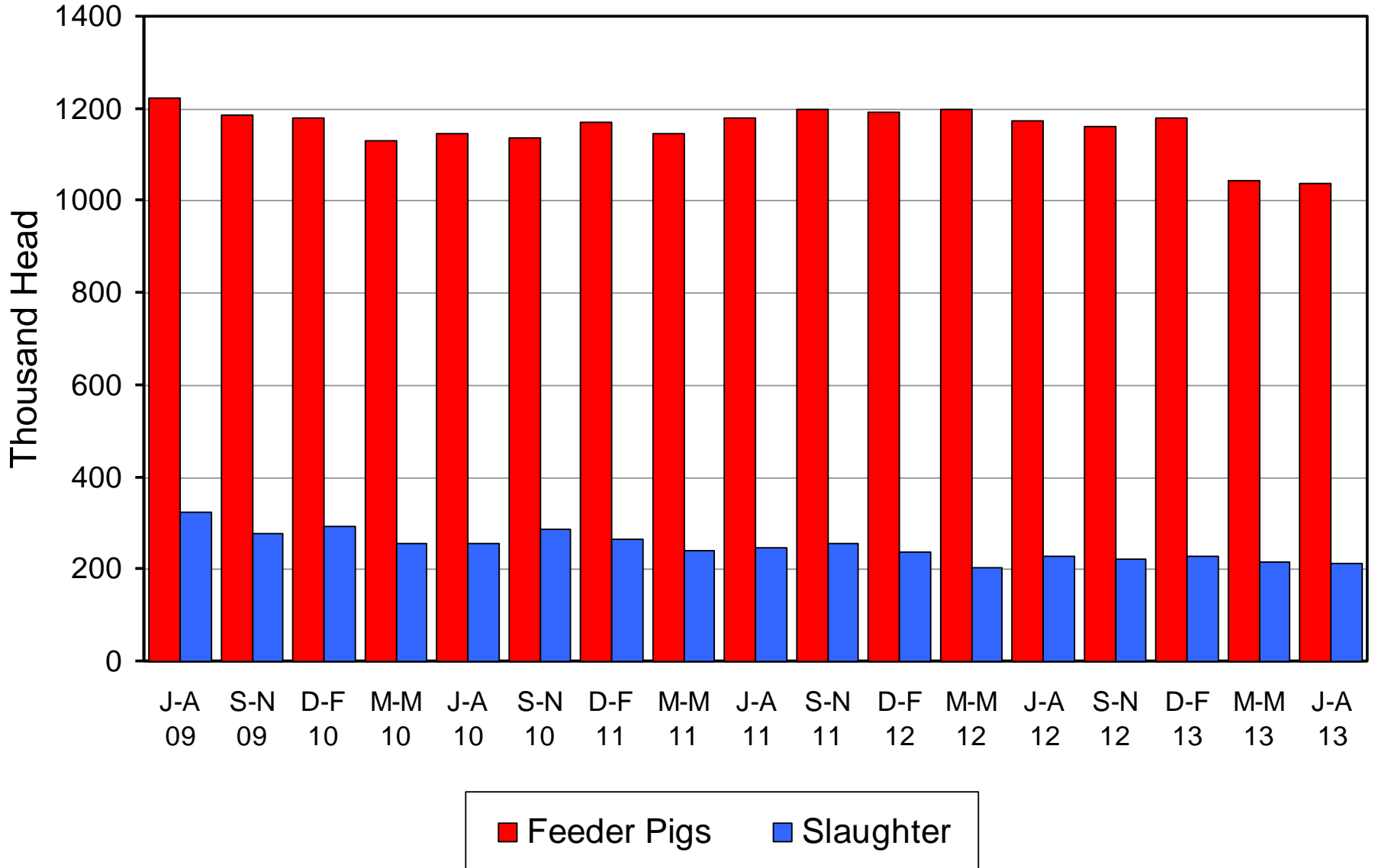
Inventory Items	NASS Estimate	Trade Average	Trade Range
All Hogs & Pigs	100.3%	98.6%	96.4% – 100.3%
Breeding Hogs	100.4%	101.5%	100.6% – 102.0%
Market Hogs	100.3%	98.3%	95.9% – 100.2%
Jun – Aug Pig Crop	101.9%	99.6%	98.4% – 101.7%
Farrowing Intentions			
Sep – Nov 2013	100.4%	101.0%	100.0% – 101.8%
Dec 2013 – Feb 2014	100.9%	101.1%	99.9% – 102.1%

All Hogs and Pigs Board vs Trade Expectations

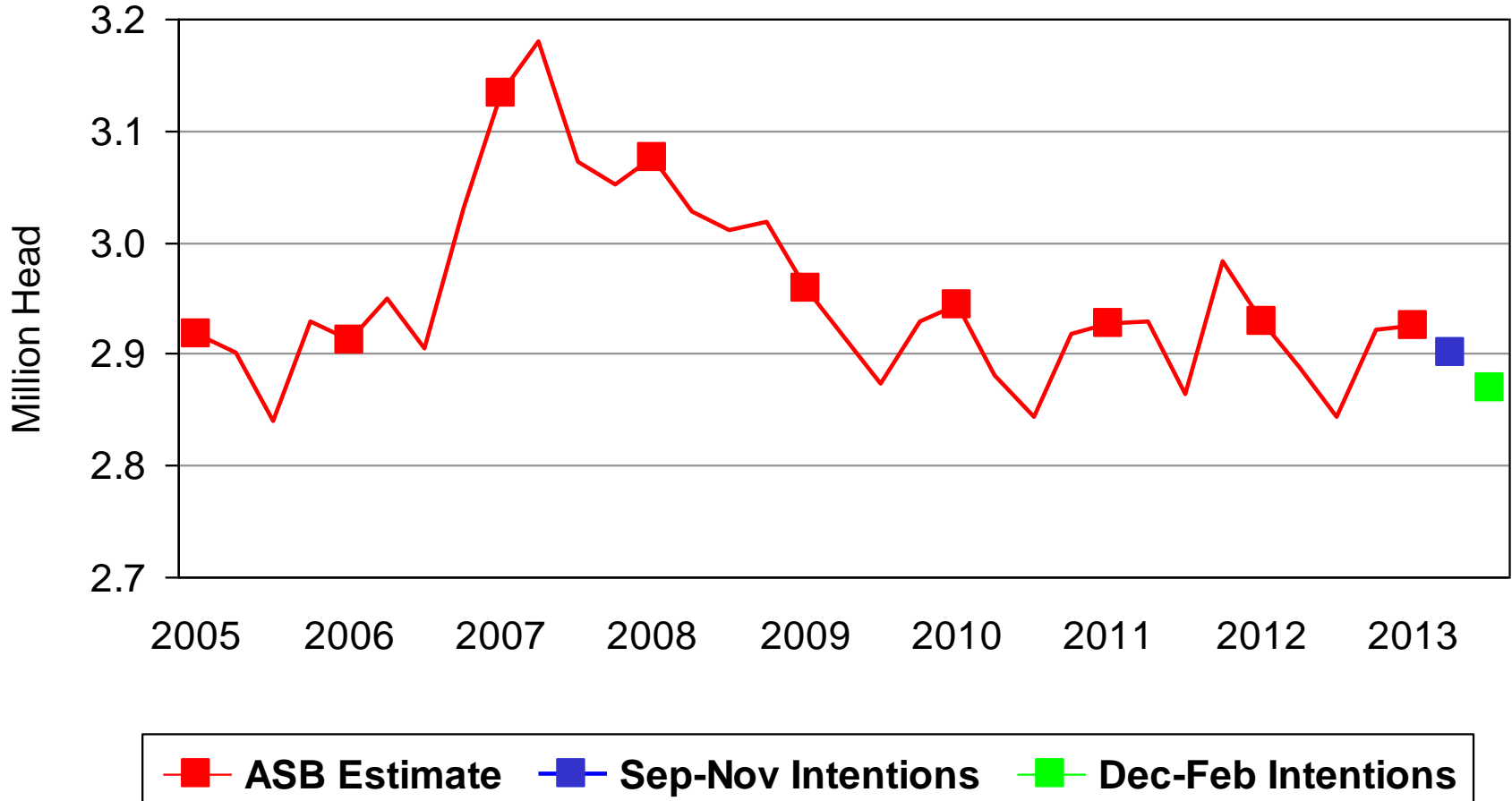


Canadian Imports by Quarter

Feeder Pigs and Slaughter Hogs



U.S. Quarterly Sows Farrowed June - August



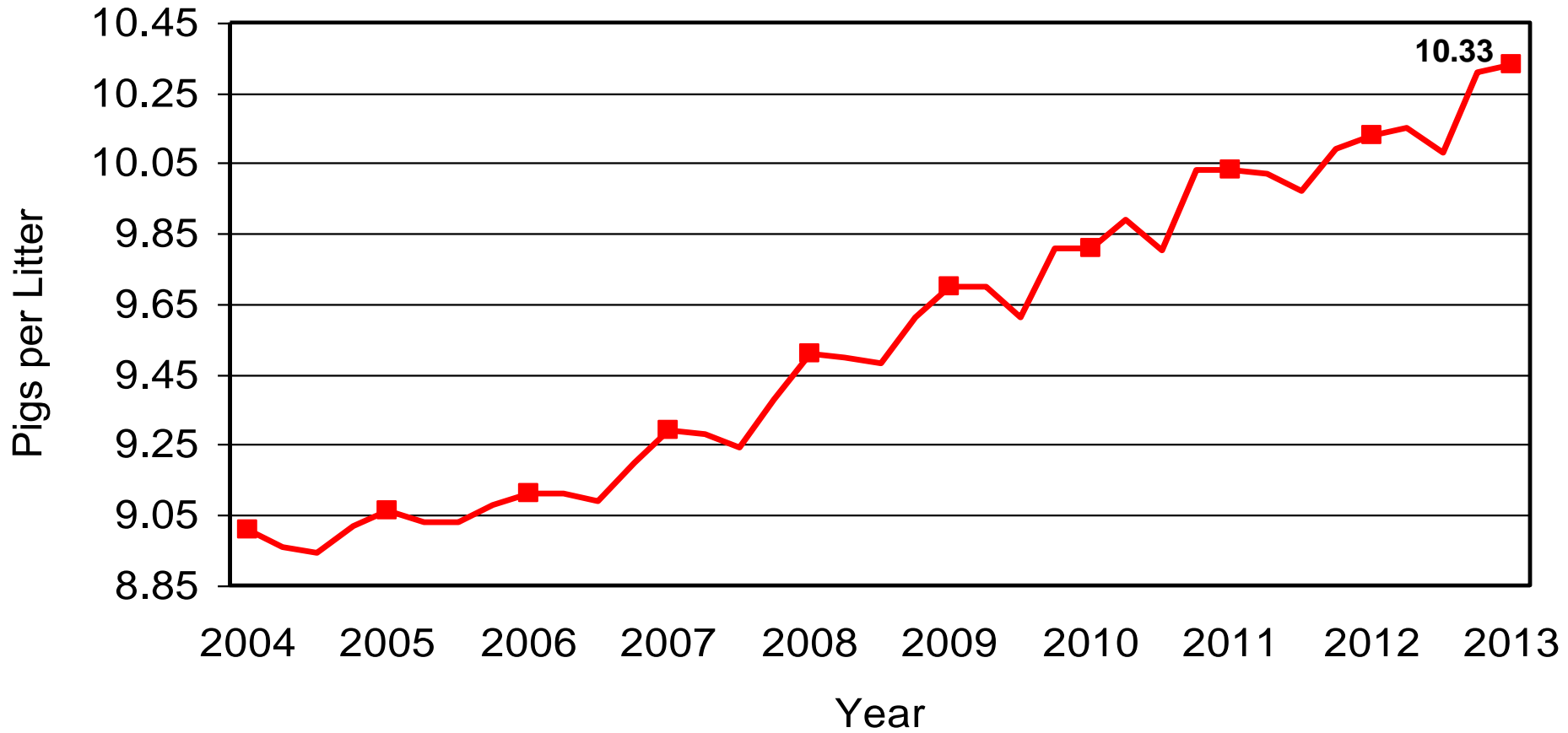


Breeding Herd Inventory Disposition & Utilization

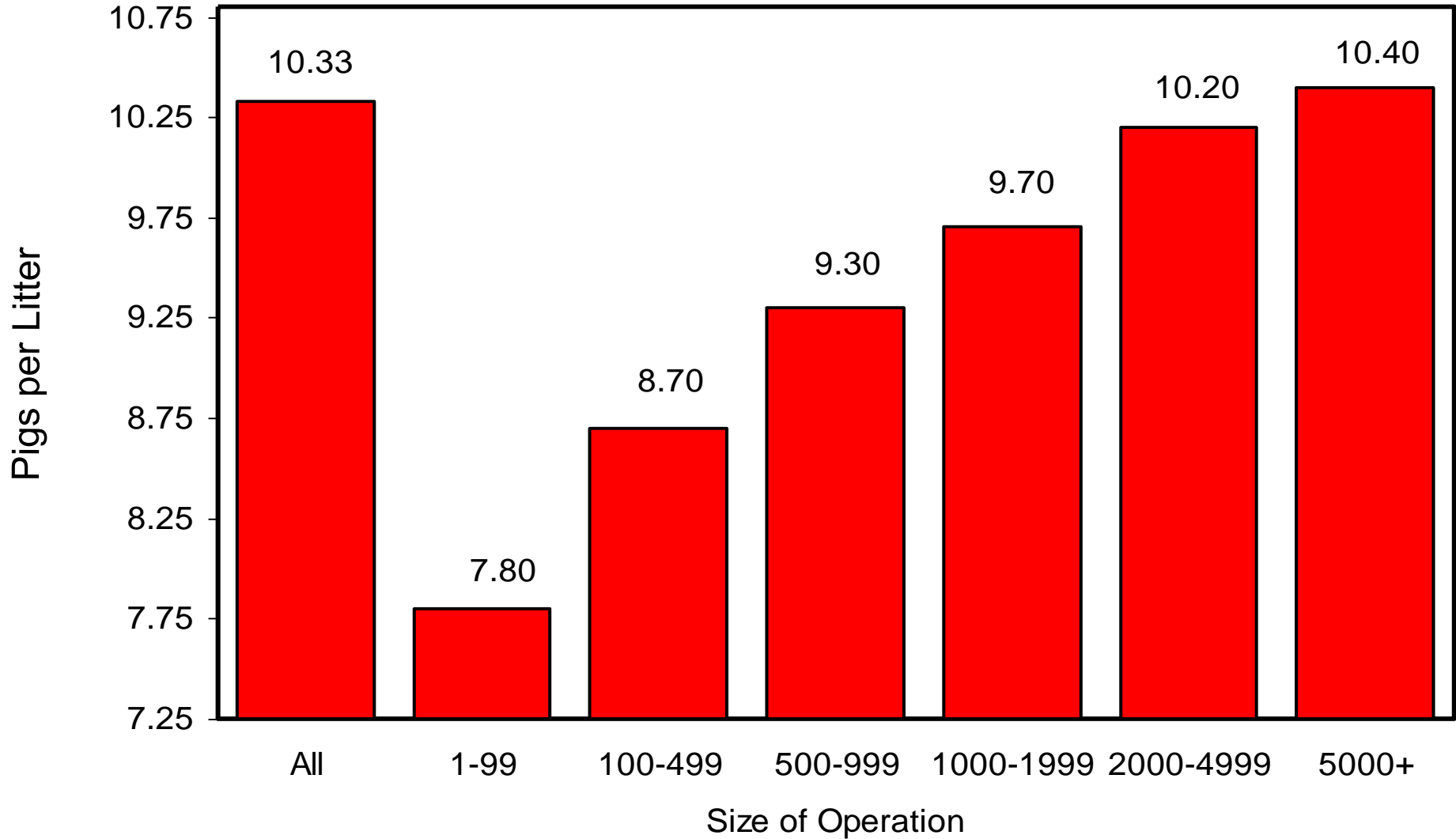


Year	Jun 1 Estimate	Slaughter	Additions	Sep 1 Estimate	Sow Utilization
	(000) Hd	(000) Hd	(000) Hd	(000) Hd	Percent
2004	5,947	891	916	5,972	49%
2005	5,988	846	851	5,993	49%
2006	6,080	896	915	6,099	48%
2007	6,169	945	984	6,208	51%
2008	6,131	1,017	947	6,061	50%
2009	5,968	963	870	5,875	50%
2010	5,788	818	800	5,770	51%
2011	5,803	848	851	5,806	50%
2012	5,862	859	785	5,788	50%
2013	5,882	796	728	5,814	50%

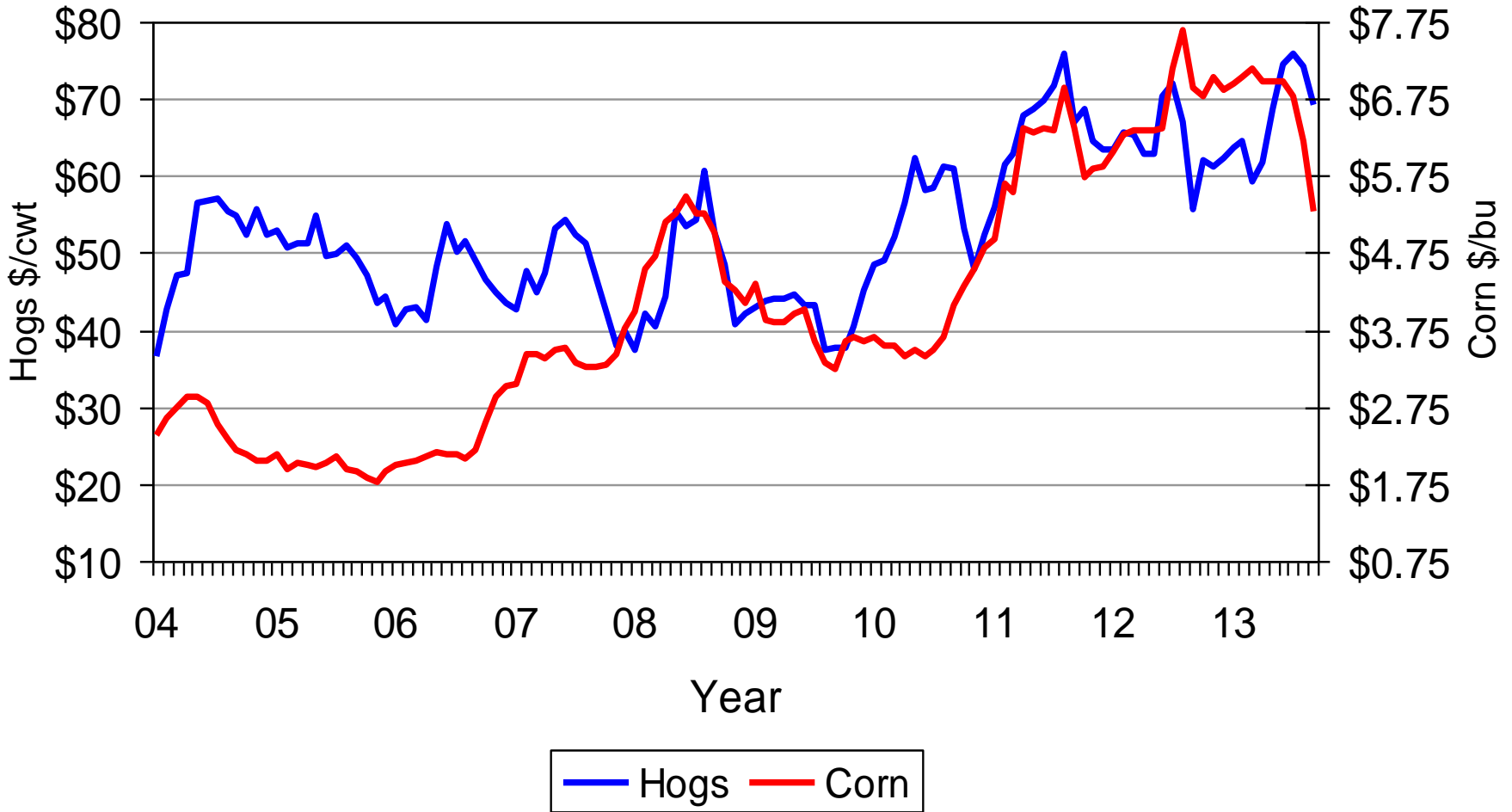
U.S. Quarterly Pigs per Litter June - August



U.S. Pigs per Litter by Size of Operation June – August 2013

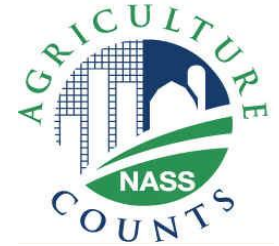


U.S. Prices Received by Farmers for Hogs & Corn





United States Department of Agriculture
National Agricultural Statistics Service

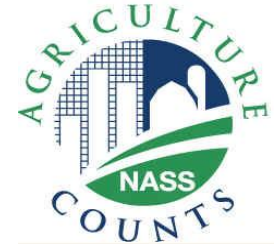


Upcoming Reports

October 11	Crop Production
October 18	Cattle on Feed
October 21	Milk Production
October 31	Agricultural Prices



United States Department of Agriculture
National Agricultural Statistics Service



All Reports Available At
www.nass.usda.gov

For Questions Call or Email

202-720-3570

800-727-9540

nass@nass.usda.gov