



United States Department of Agriculture  
**National Agricultural Statistics Service**

---

---



**AUGUST CROP PRODUCTION**  
Executive Summary

August 12, 2013

12:00pm



# Contents



Field Crops	Specialty Crops
Corn	Dry Beans
Soybeans	Summer Potatoes
Cotton	Tobacco
Wheat	Sugarbeets
Oats	Sugarcane
Barley	
Sorghum	
Alfalfa & Other Hay	
Rice	
Peanuts	

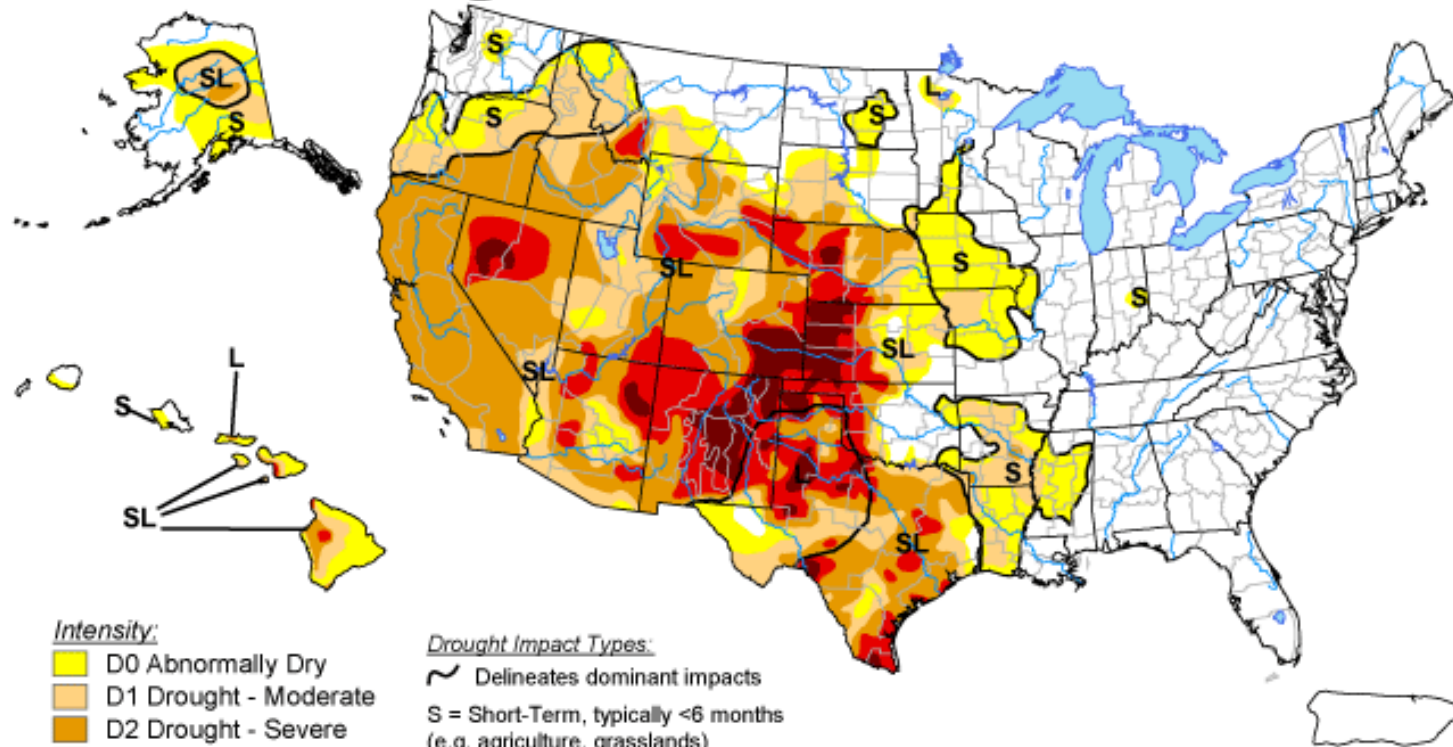


# Survey Overview

	Ag Yield	Objective Yield
Survey Type	Farmer Reported	Field Measurement
Crops Included	Field Crops	Corn, Soybeans, Cotton, and Winter Wheat
Sample Size	24,363	4,504
Collection Period	Jul 30 – Aug 6	Jul 24 – Aug 1

# U.S. Drought Monitor

July 30, 2013  
Valid 7 a.m. EDT



Intensity:

- D0 Abnormally Dry
- D1 Drought - Moderate
- D2 Drought - Severe
- D3 Drought - Extreme
- D4 Drought - Exceptional

Drought Impact Types:

- Delineates dominant impacts
- S = Short-Term, typically <6 months (e.g. agriculture, grasslands)
- L = Long-Term, typically >6 months (e.g. hydrology, ecology)

The Drought Monitor focuses on broad-scale conditions. Local conditions may vary. See accompanying text summary for forecast statements.

<http://droughtmonitor.unl.edu/>



Released Thursday, August 1, 2013

Author: Brian Fuchs, National Drought Mitigation Center



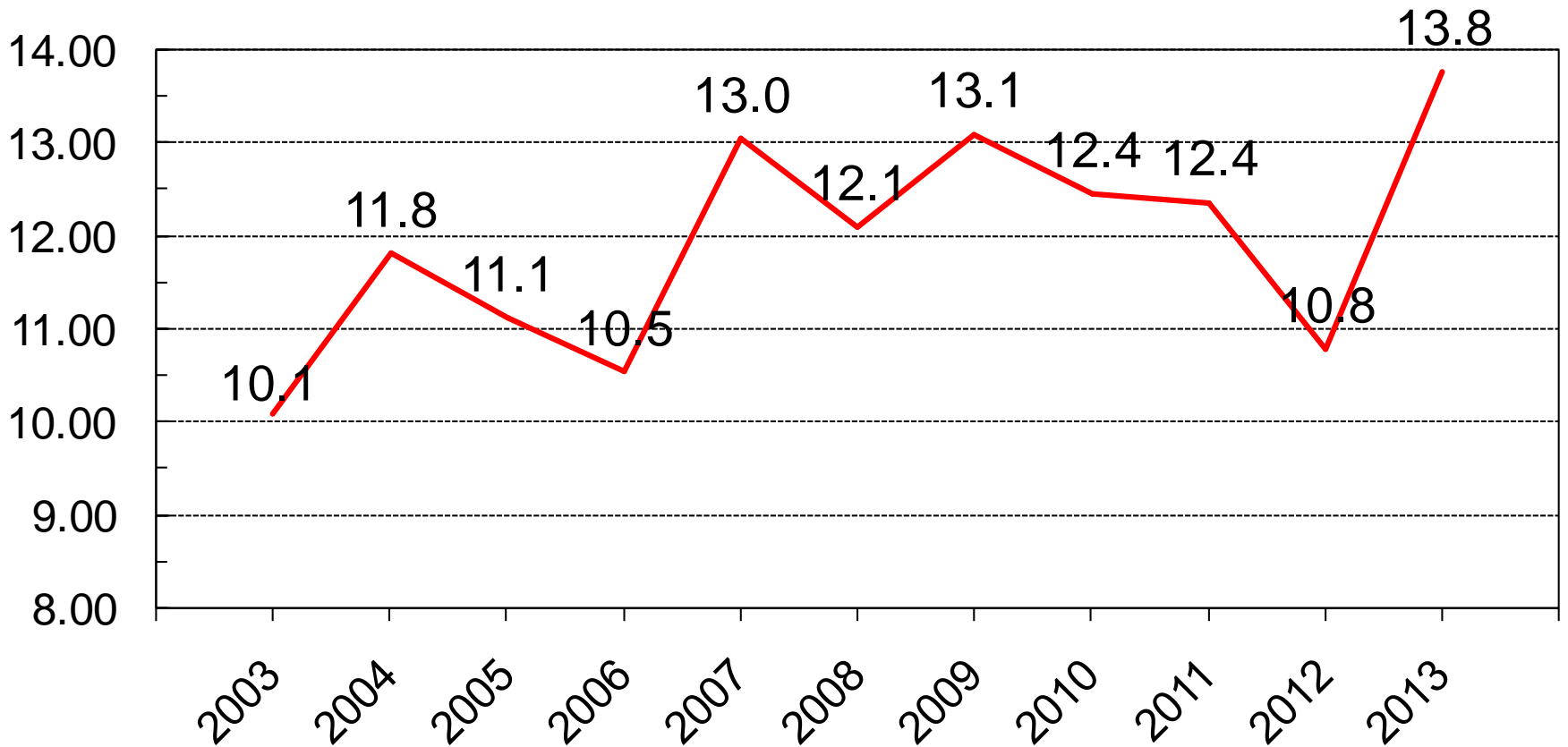
# August 2013 Crop Production

<b>Crop</b>	<b>Unit</b>	<b>August 2013</b>	<b>% Change from Previous Forecast</b>	<b>% Change from Previous Season</b>
<b>Corn</b>				
Planted	Mil Ac	97.4	NC	+0.2
Harvested	Mil Ac	89.1	NC	+2.0
Yield	Bu/Ac	154.4	---	+25.1
Production	Bil Bu	13.8	---	+27.7



# U.S. Corn Production

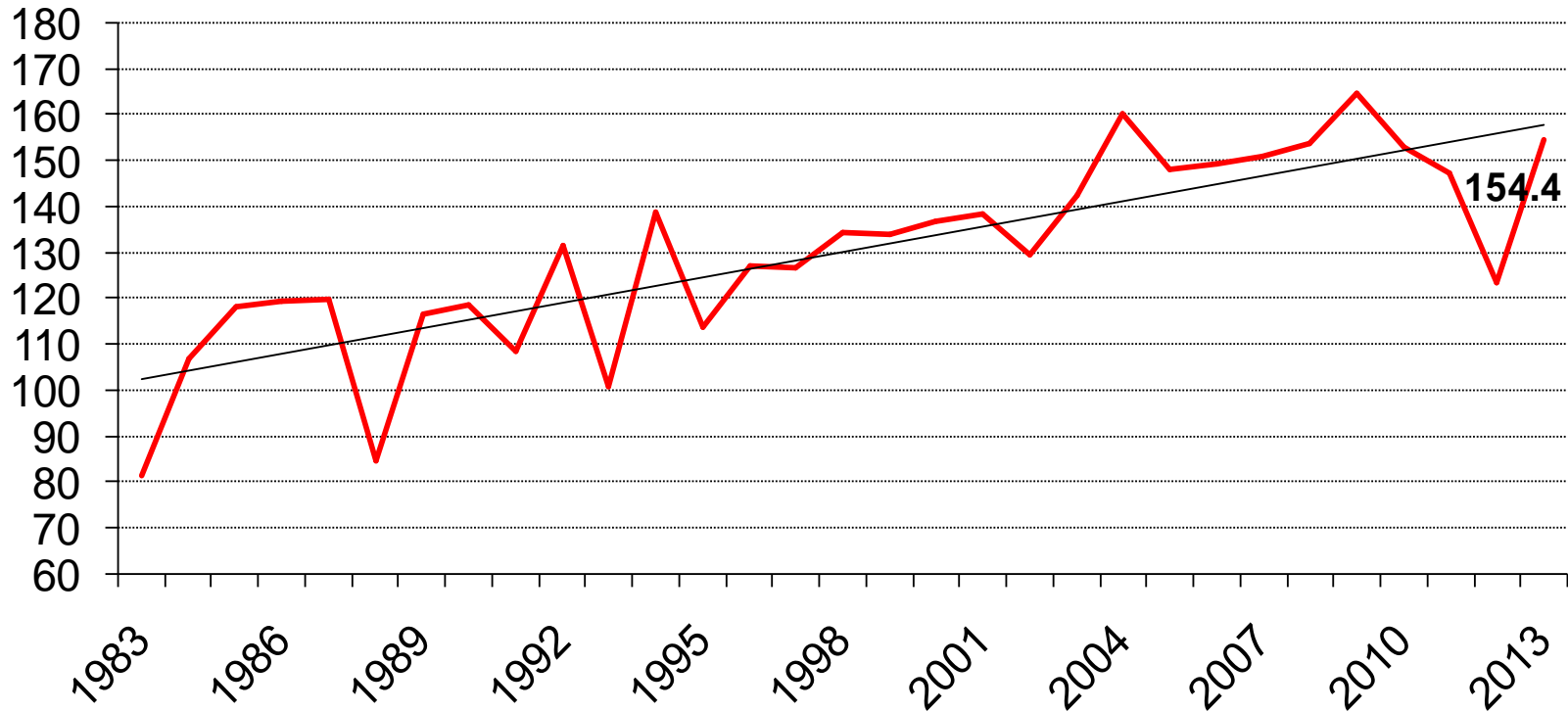
Billion Bushels





# U.S. Corn Yield

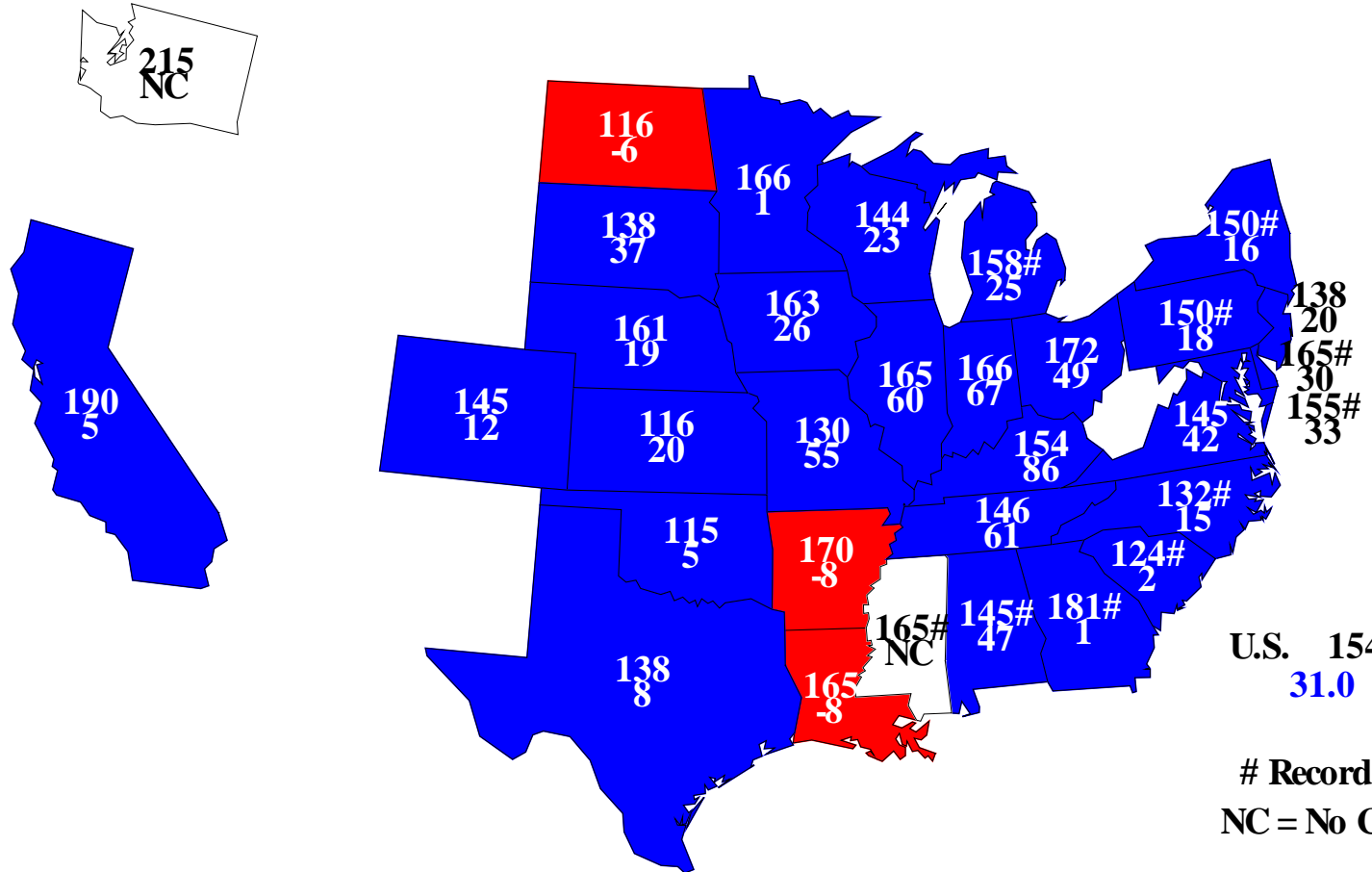
Bushels/Acre





# Corn for Grain Yields, 2013

## Bushels and Change From Previous Year



U.S. 154.4  
31.0

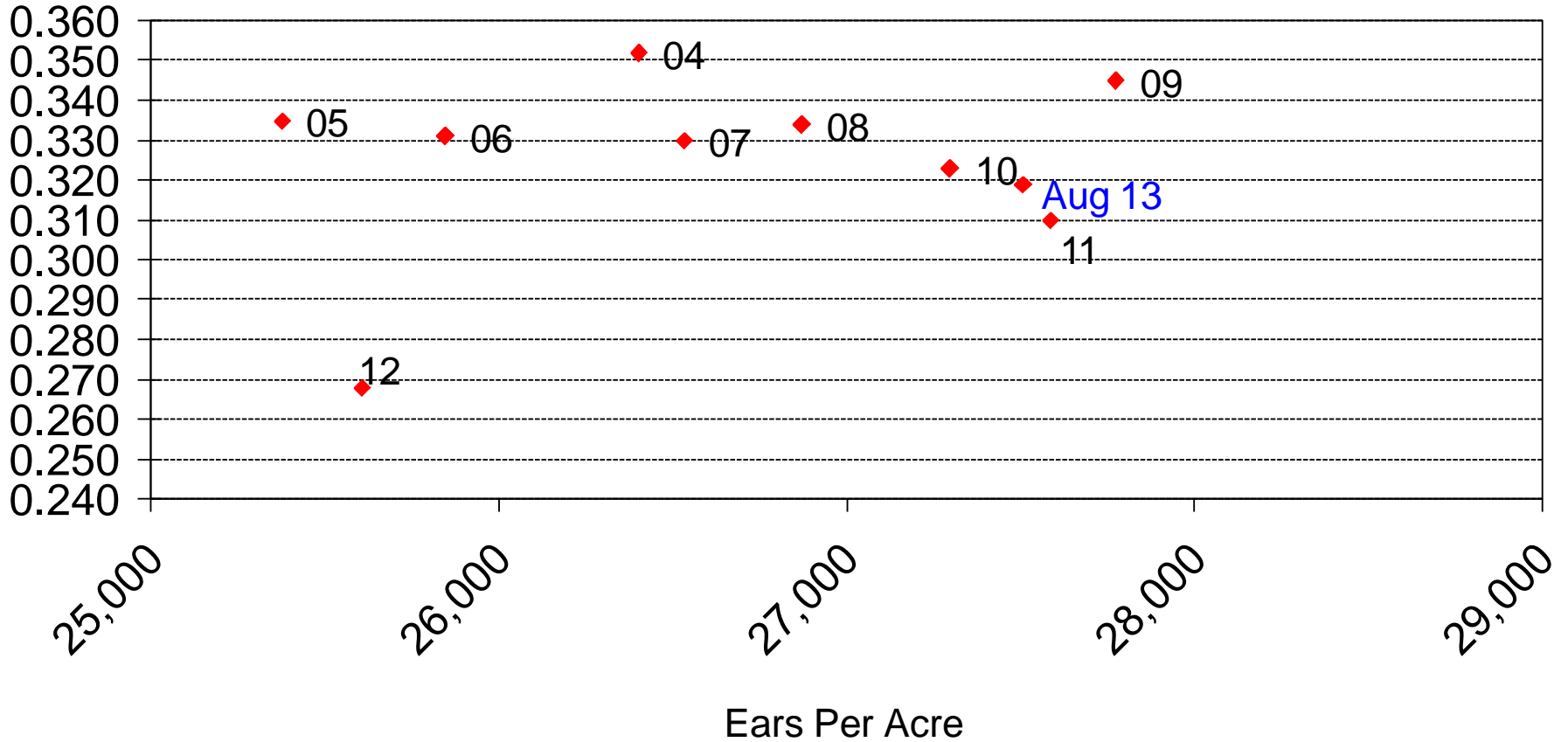
# Record High  
NC = No Change





# Corn Objective Yield Region Derived Grain Weight vs Ears per Acre

Lbs/Ear





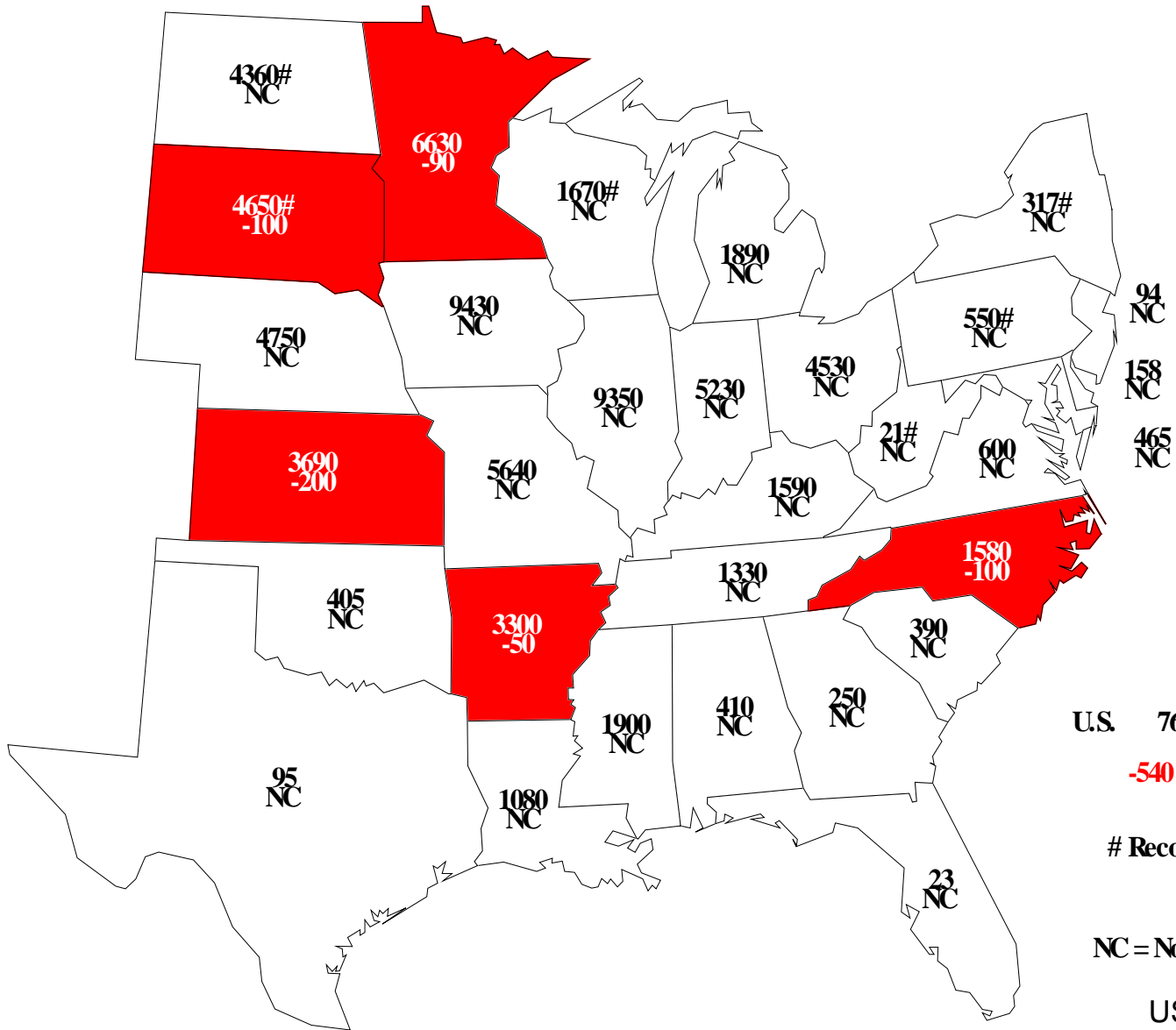
# August 2013 Crop Production

Crop	Unit	August 2013	% Change from Previous Forecast	% Change from Previous Season
<b>Soybeans</b>				
Planted	Mil Ac	77.2	-0.7	-<0.1
Harvested	Mil Ac	76.4	-0.7	+0.4
Yield	Bu/Ac	42.6	---	+7.6
Production	Bil Bu	3.26	---	+8.0



# 2013 Soybeans Harvested

## Acres (000) and Change From Previous Estimate



U.S. 76,378  
**-540**

# Record High

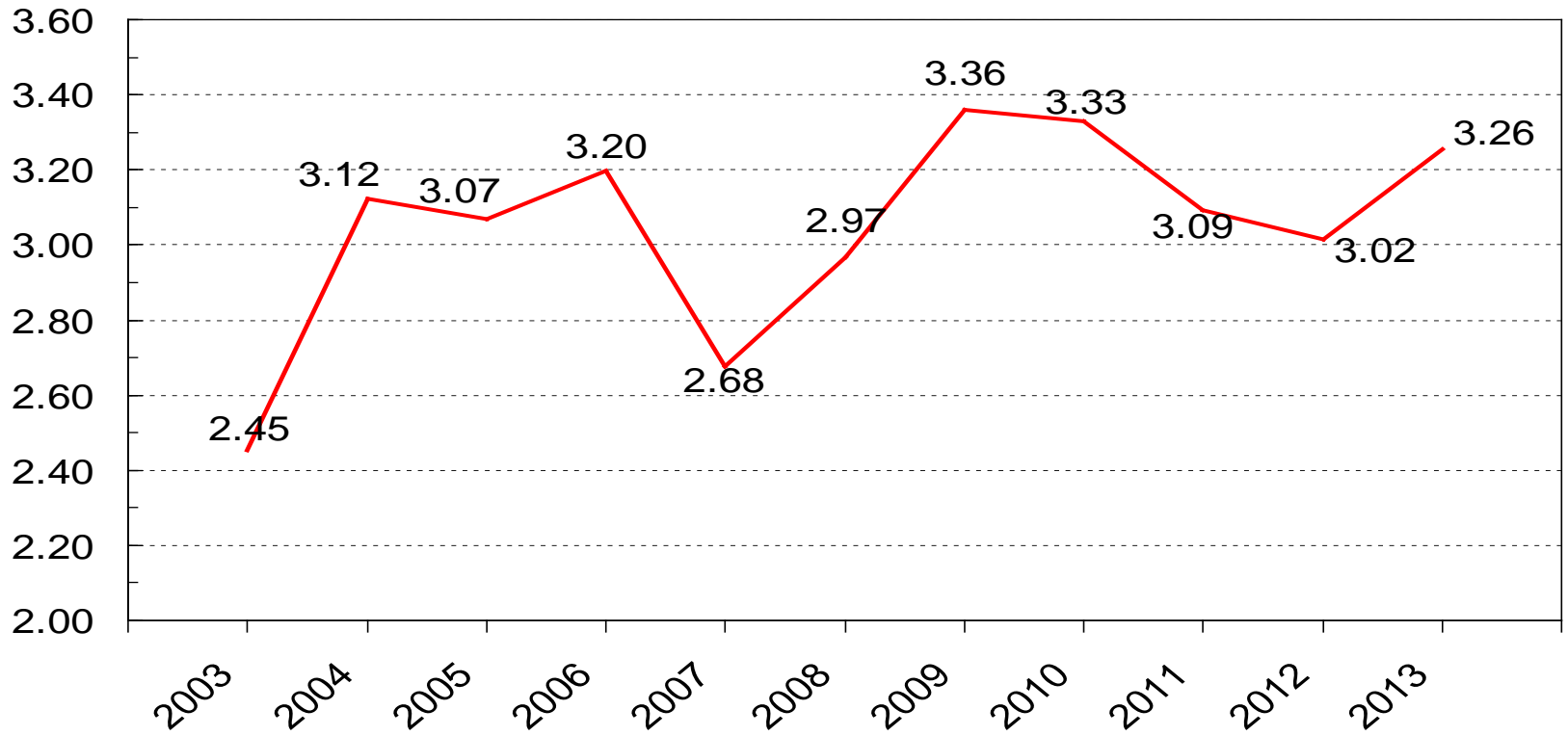
NC = No Change

USDA-NASS  
8-12-13



# U.S. Soybean Production

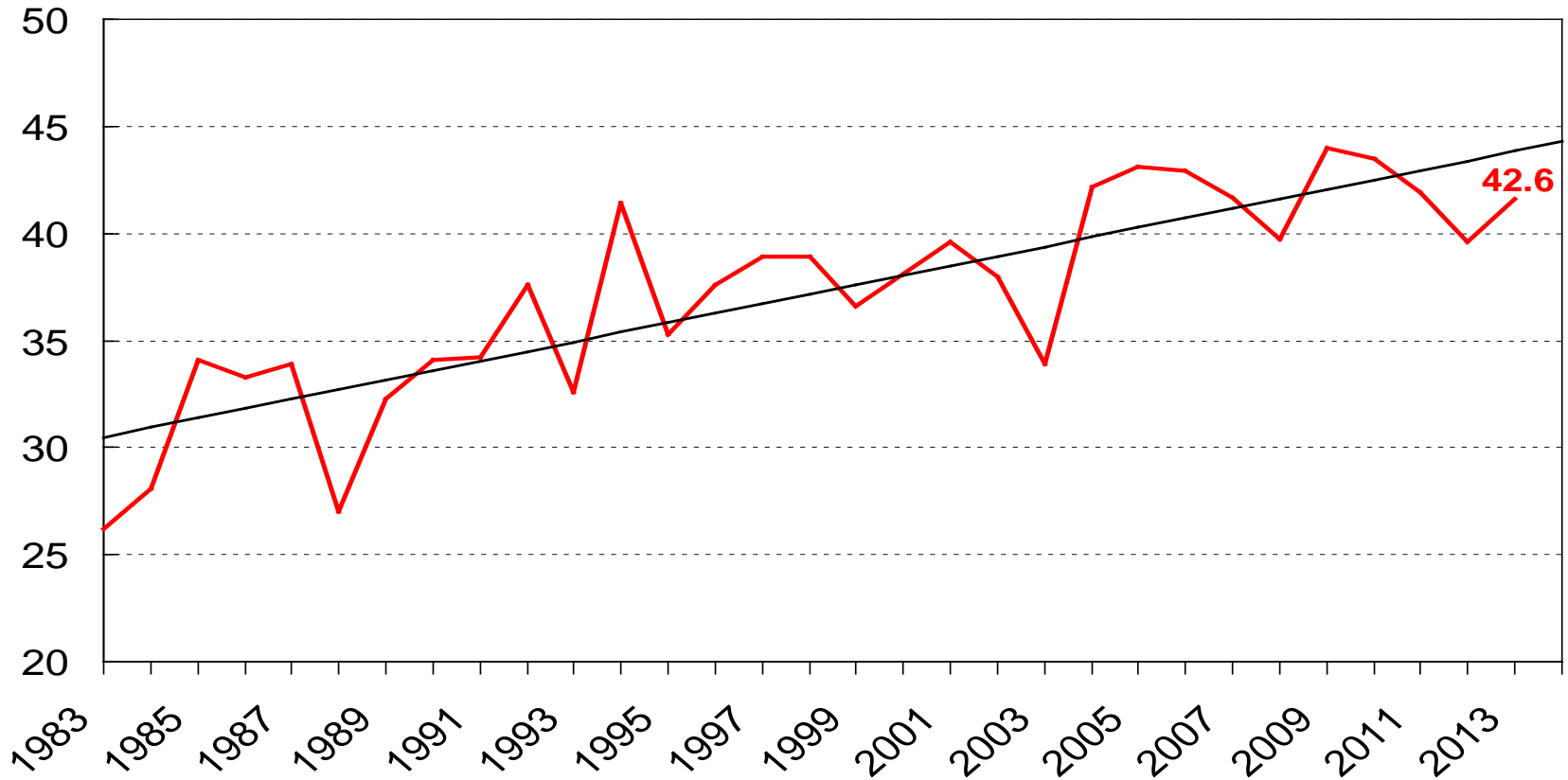
Billion Bushels





# U.S. Soybean Yield

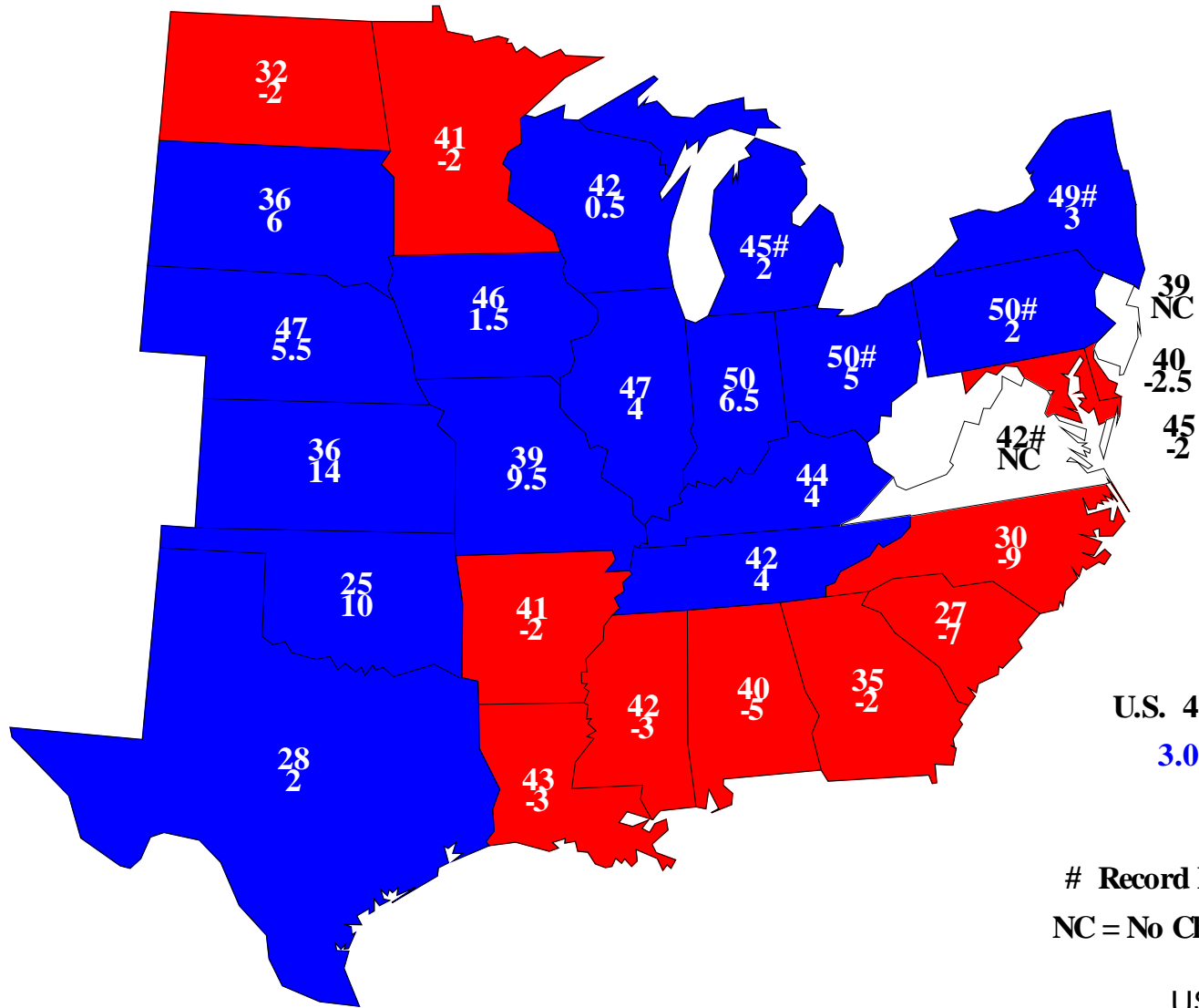
Bushels/Acre





# Soybean Yields, August 1, 2013

## Bushels and Change From Previous Year



U.S. 42.6  
3.0

# Record High  
NC = No Change



# August 2013 Crop Production

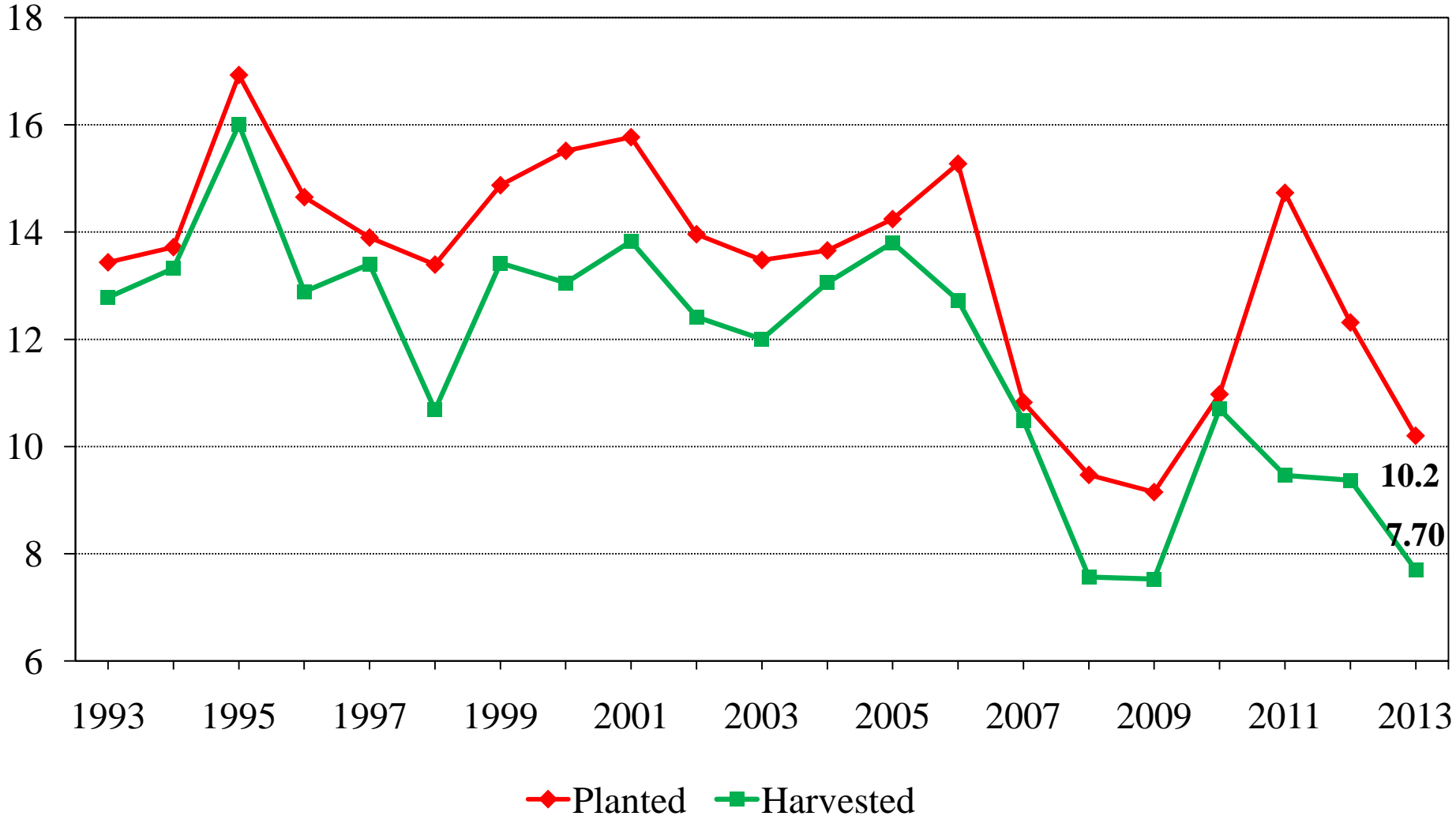
Crop	Unit	August 2013	% Change from Previous Forecast	% Change from Previous Season
<b>Cotton</b>				
Planted	Mil Ac	10.2	-0.5	-17.2
Harvested	Mil Ac	7.70	---	-17.8
Yield	Lbs/Ac	813	---	-8.3
Production	Mil Bales	13.1	---	-24.6



# U.S. All Cotton Acres



Million acres



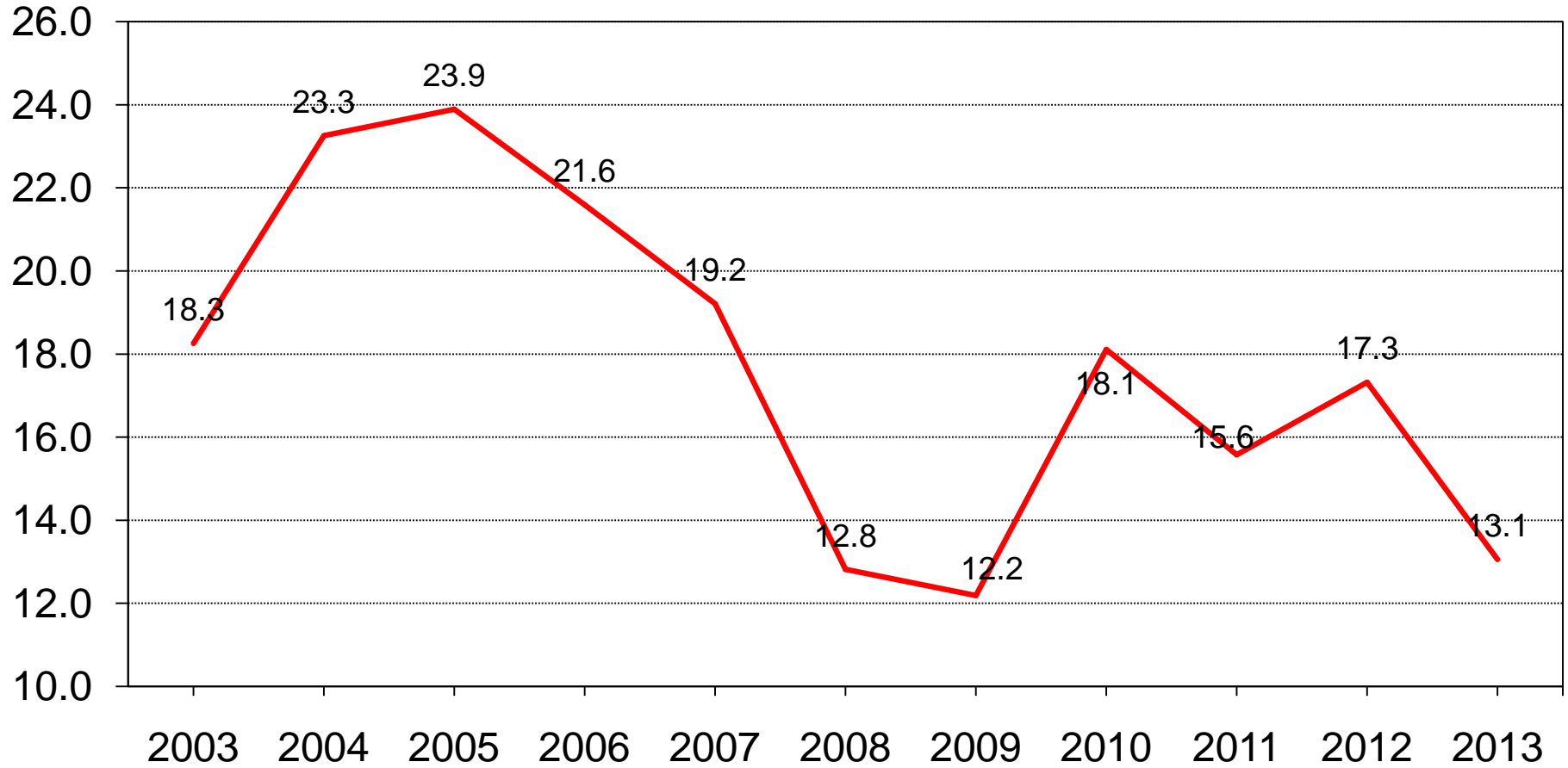




# U.S. All Cotton Production



Million bales

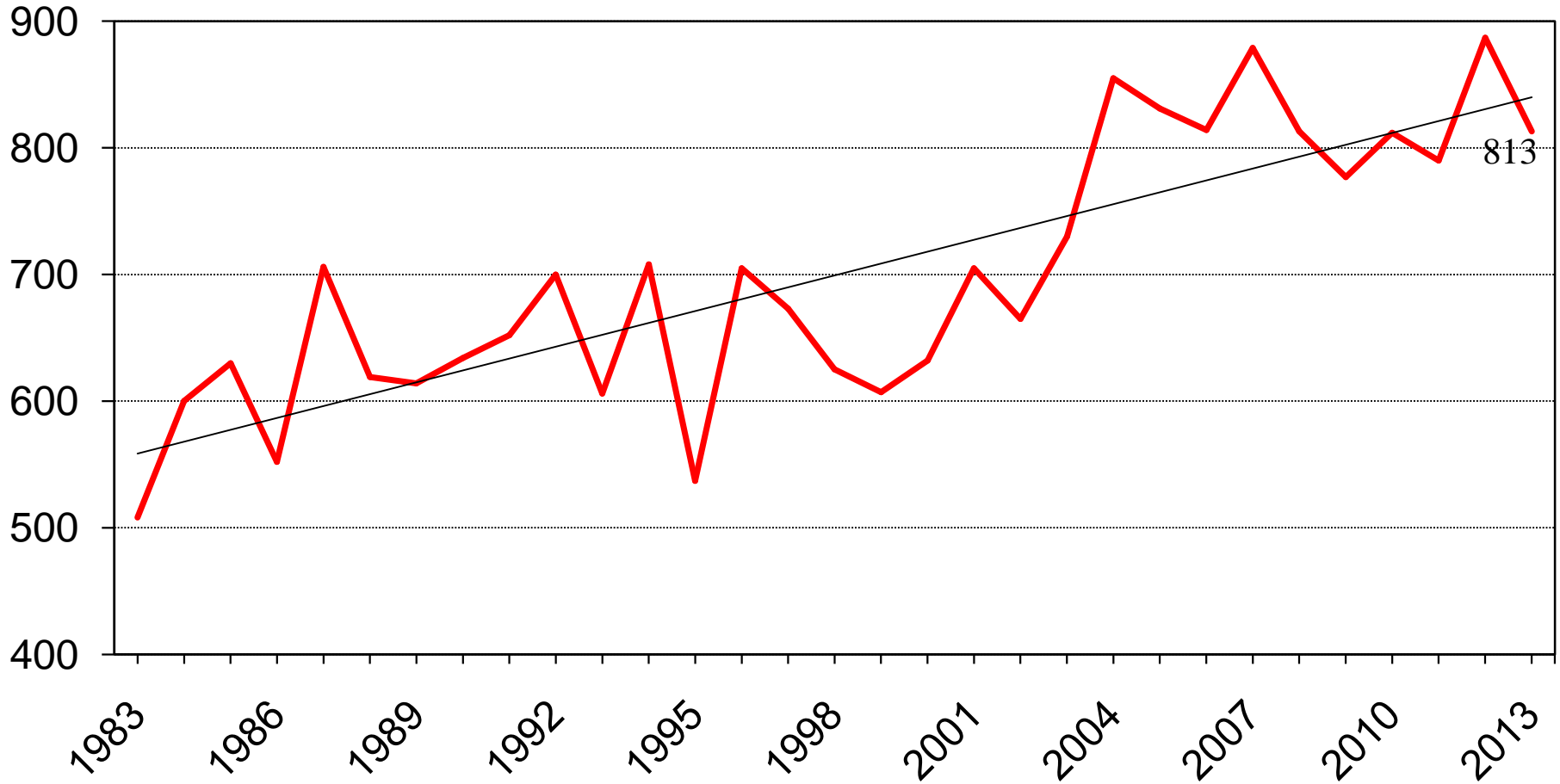




# U.S. All Cotton Yield



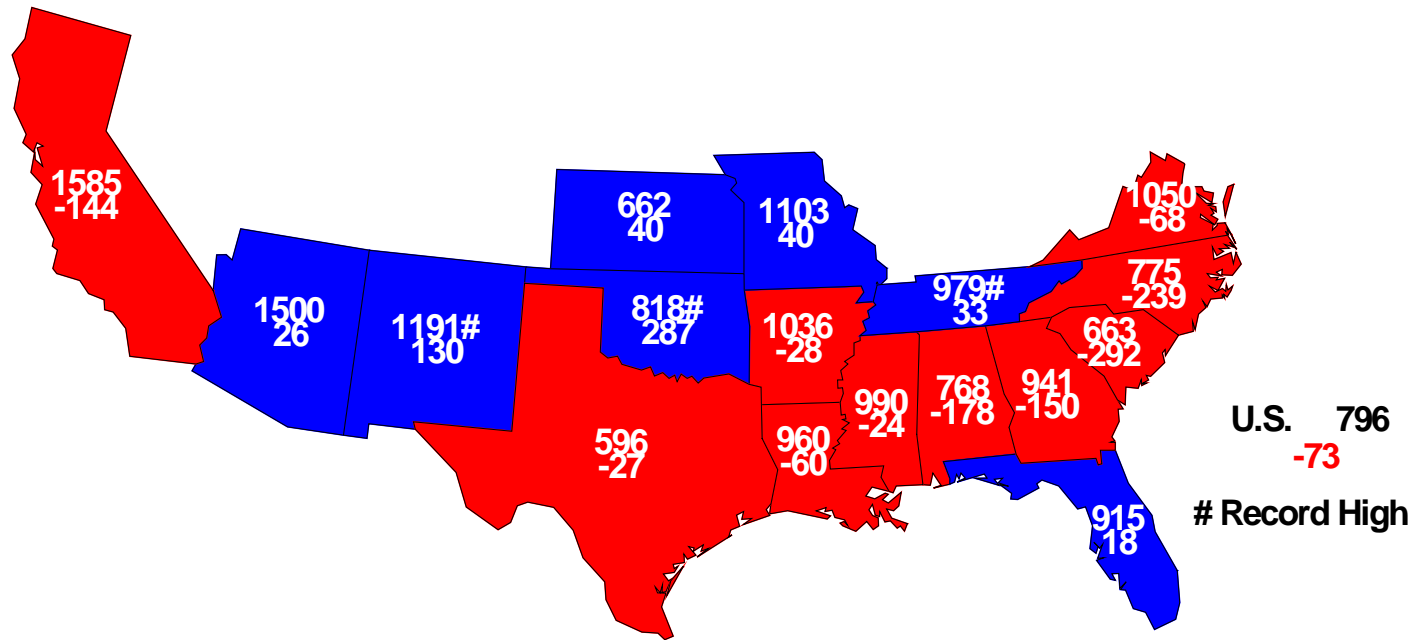
Pounds/acre





# Upland Cotton Yield, August 1, 2013

## Pounds and Change From Previous Year





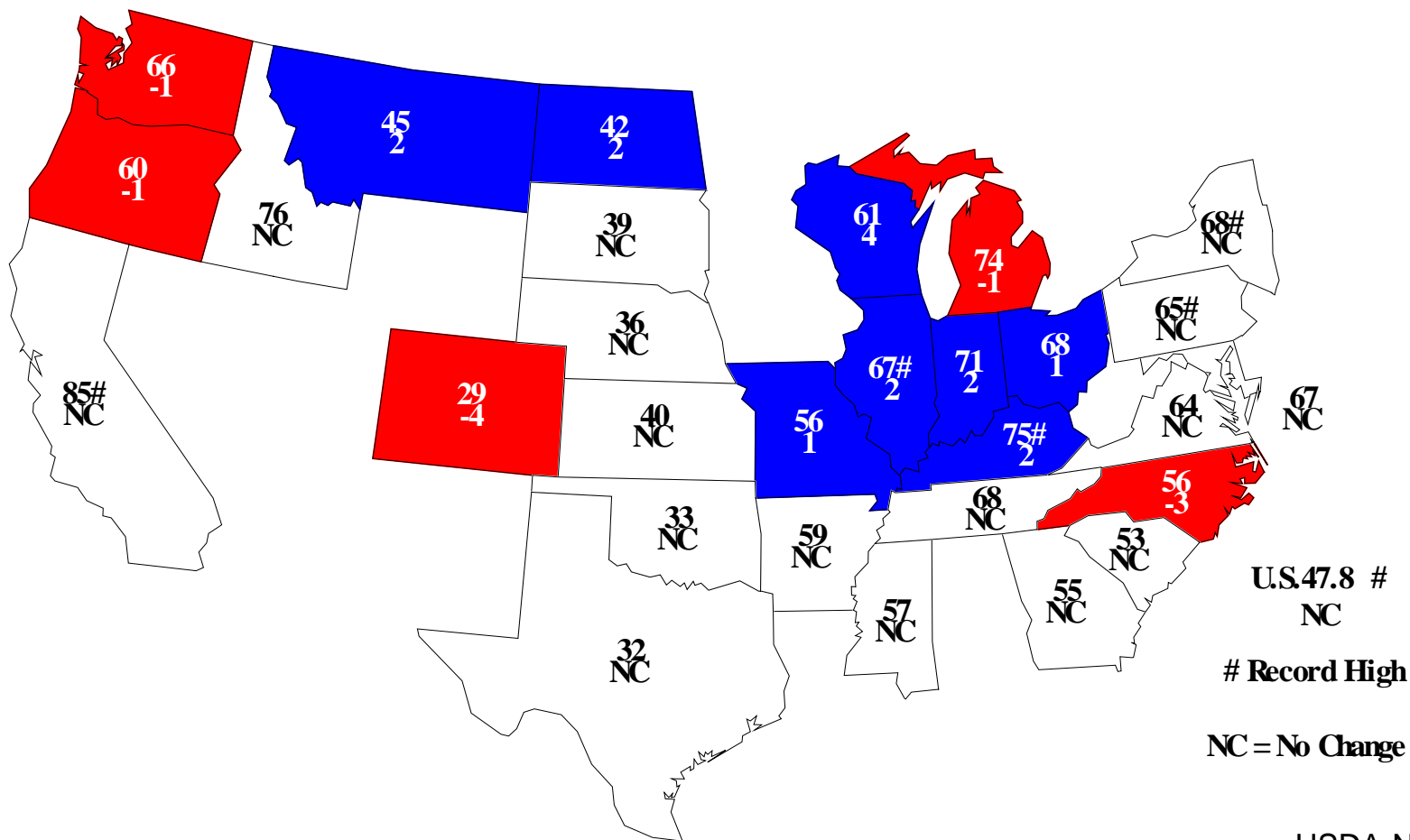
# August 2013 Crop Production

Crop	Unit	August 2013	% Change from	% Change from
			Previous Forecast	Previous Season
<b>Winter Wheat</b>				
Harvested	Mil Ac	32.3	NC	- 7.4
Yield	Bu/Ac	47.8	NC	+ 1.3
Production	Bil Bu	1.54	-<0.1	- 6.2
<b>Other Spring</b>				
Harvested	Mil Ac	12.0	NC	- 0.8
Yield	Bu/Ac	42.8	- 0.2	- 4.9
Production	Mil Bu	511	- 0.3	- 5.7
<b>Durum</b>				
Harvested	Mil Ac	1.50	NC	- 28.5
Yield	Bu/Ac	40.1	+ 4.7	+ 2.8
Production	Mil Bu	60.2	+ 4.6	- 26.5
<b>All Wheat</b>				
Production	Bil Bu	2.11	+<0.1	- 6.8



# Winter Wheat Yield - August 1, 2013

## Bushels and Change From Previous Month



U.S. 47.8 #  
NC

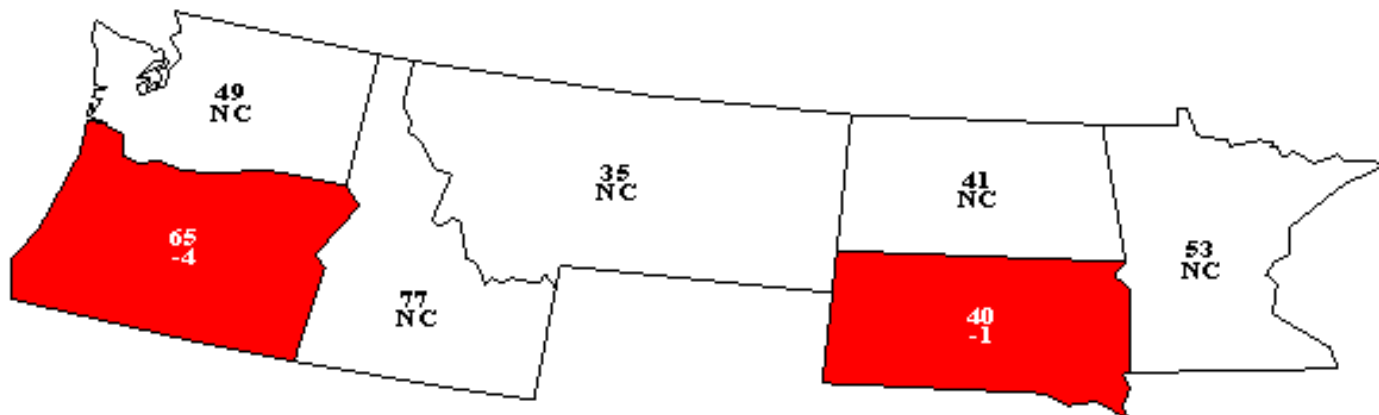
# Record High

NC = No Change



# Other Spring Wheat Yield - August 1, 2013

## Bushels and Change From Previous Month



U. S. 42.8

-0.1

NC = No Change



# August 2013 Crop Production

Crop	Unit	August 2013	% Change from Previous Forecast	% Change from Previous Season
Oats	Mil Bu	75.2	+ 1.0	+ 17.5
Barley	Mil Bu	218	-0.9	-1.2
Sorghum	Mil Bu	359	---	+45.3
Alfalfa Hay	Mil Tons	59.9	---	+15.1
Other Hay	Mil Tons	80.0	---	+17.9
Rice	Mil Cwt	181	---	-9.1



# August 2013 Crop Production

Crop	Unit	August 2013	% Change from Previous Forecast	% Change from Previous Season
Peanuts	Bil Lbs	3.85	---	<b>-42.9</b>
Dry Beans	Mil Cwt	24.6	---	<b>-23.0</b>
All Tobacco	Mil Lbs	723	---	<b>-5.2</b>
Sugarbeets	Mil Tons	30.0	---	<b>-14.8</b>
Sugarcane	Mil Tons	30.4	---	<b>-5.8</b>
Coffee (HI)	Mil Lbs	7.00	<b>-2.8</b>	<b>-7.9</b>
Summer Potatoes	Mil Cwt	16.4	---	<b>-8.3</b>





United States Department of Agriculture  
**National Agricultural Statistics Service**



---

---

## Upcoming Reports

August 23      Cattle on Feed

August 27      Rice Stocks

August 30      Ag Prices

September 12   Crop Production



United States Department of Agriculture  
**National Agricultural Statistics Service**

---

---



All Reports Available At

[www.nass.usda.gov](http://www.nass.usda.gov)

For Questions

202-720-2127

800-727-9540

[nass@nass.usda.gov](mailto:nass@nass.usda.gov)