



United States Department of Agriculture
National Agricultural Statistics Service



MAY CROP PRODUCTION

Executive Summary

MAY 10, 2013

12:00 PM



Contents

Field Crops	Fruits/Nuts
Winter Wheat	Citrus
Hay Stocks	
Cotton	
Tobacco	
Potatoes	

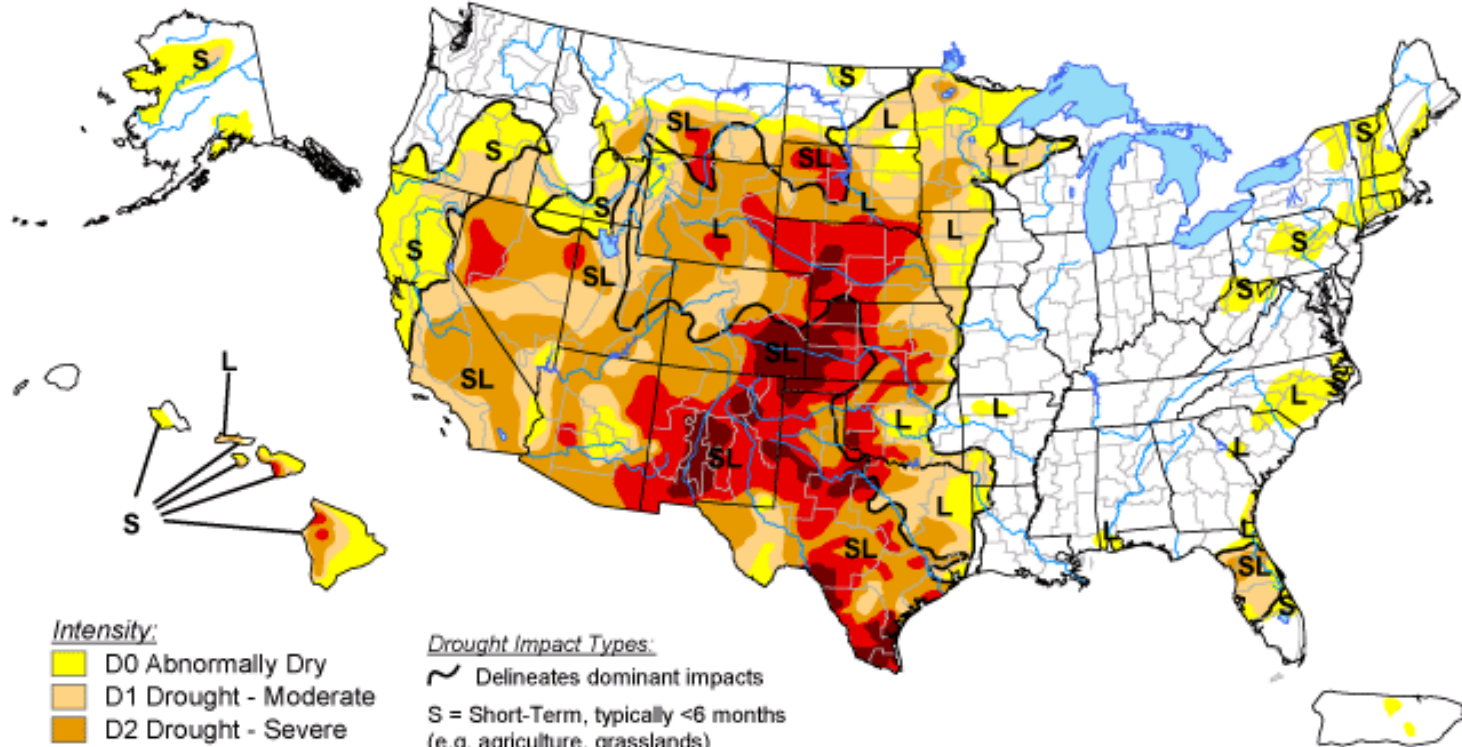


Survey Overview

	Ag Yield	Objective Yield
Survey Type	Farmer Reported	Field Measurement
Crops Included	Winter and Durum Wheat and Hay Stocks	Winter Wheat
States	All except AK and HI	KS, OK, TX
Sample Size	12,989	335
Collection Period	Apr 29 - May 7	Apr 24 - May 1

U.S. Drought Monitor

April 30, 2013
Valid 7 a.m. EDT



Intensity:

- D0 Abnormally Dry
- D1 Drought - Moderate
- D2 Drought - Severe
- D3 Drought - Extreme
- D4 Drought - Exceptional

Drought Impact Types:

- Delineates dominant impacts
- S = Short-Term, typically <6 months (e.g. agriculture, grasslands)
- L = Long-Term, typically >6 months (e.g. hydrology, ecology)

The Drought Monitor focuses on broad-scale conditions. Local conditions may vary. See accompanying text summary for forecast statements.

<http://droughtmonitor.unl.edu/>



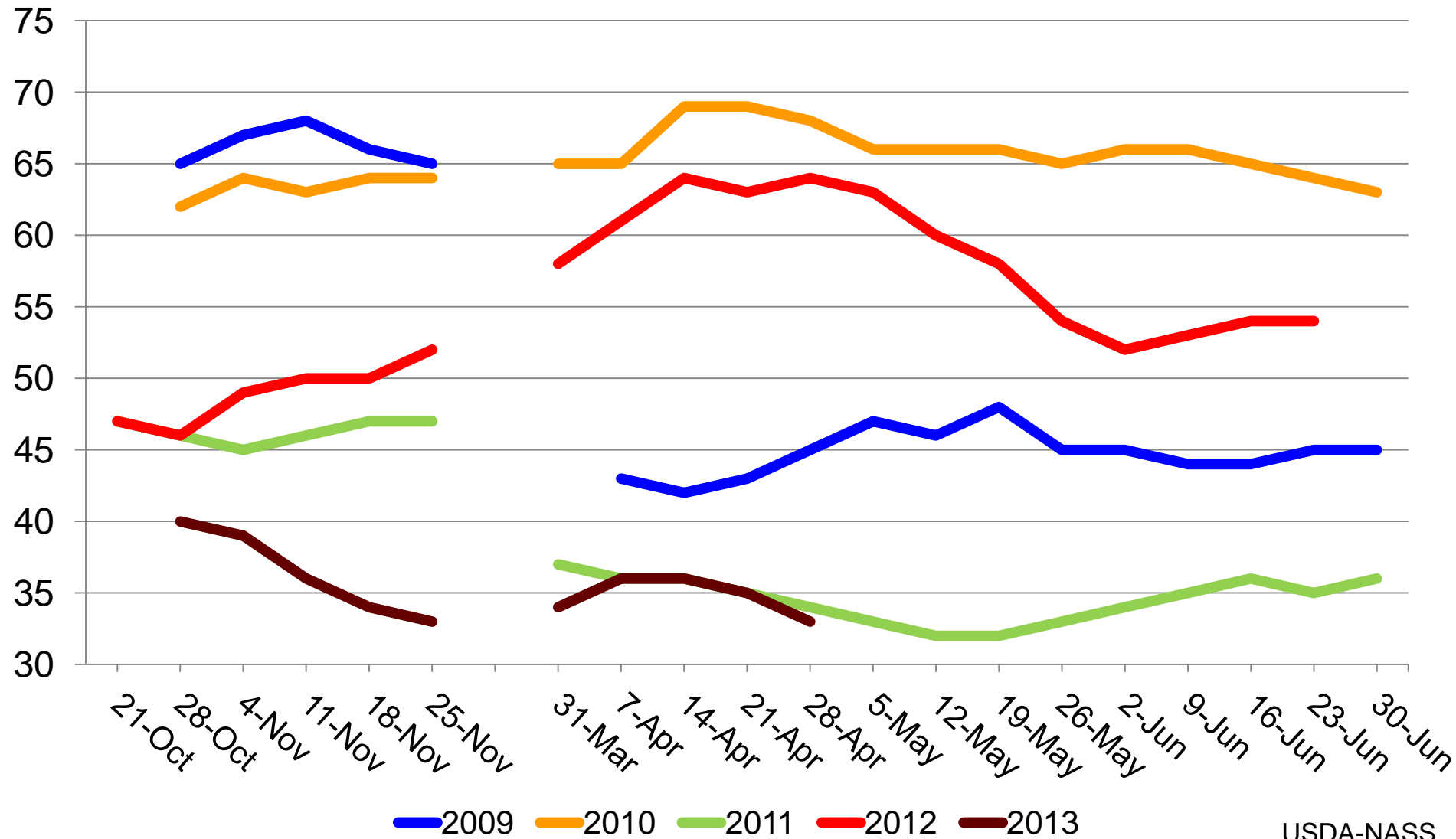
Released Thursday, May 2, 2013

Author: Eric Luebehusen, U.S. Department of Agriculture



Winter Wheat Condition

Percent Rated Good to Excellent





May 2013 Crop Production

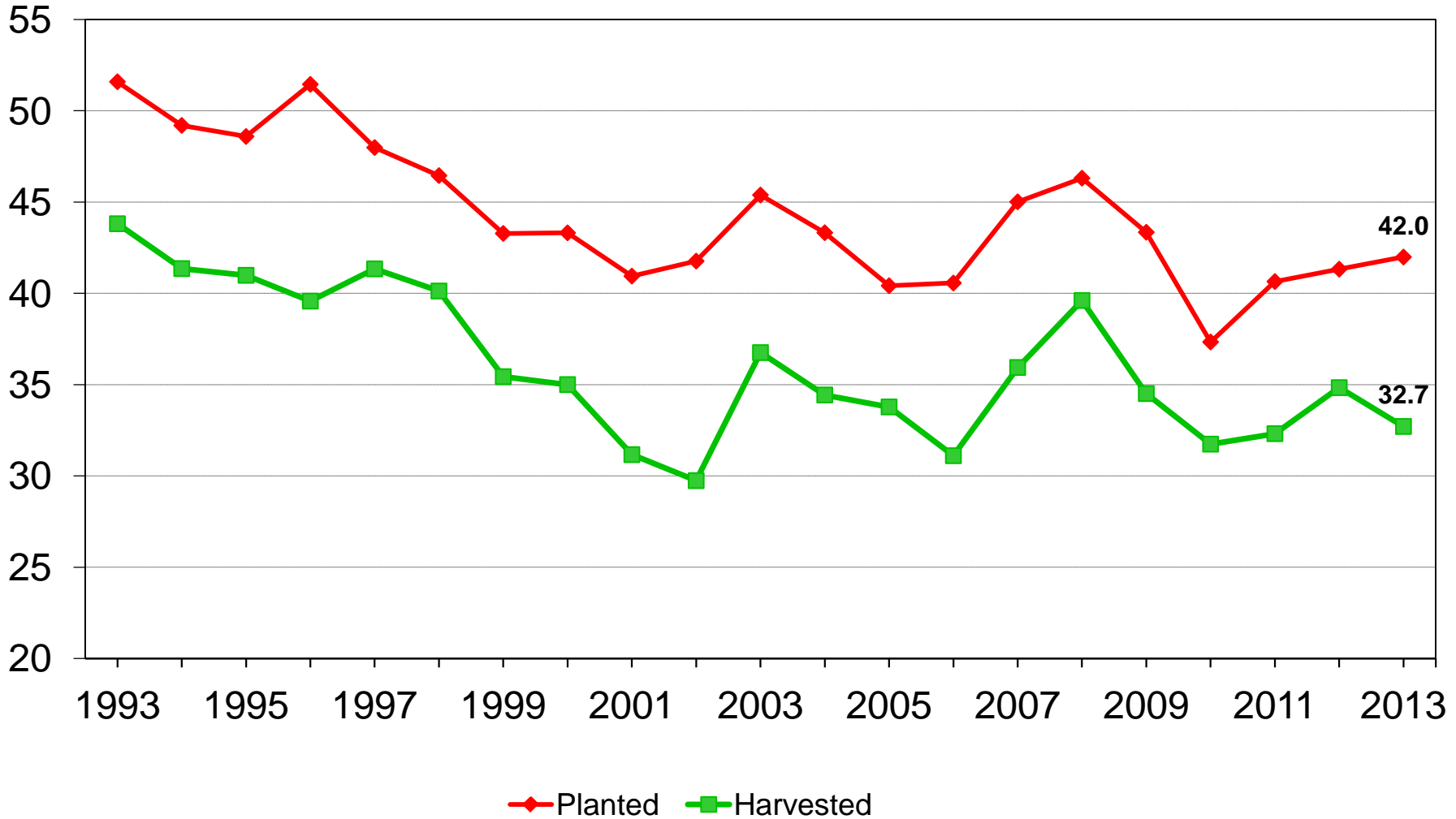
Crop	Unit	May 2013	% Change from Prev Season
Winter Wheat			
Harvested	Mil Ac	32.7	- 6.1
Yield	Bu/Ac	45.4	- 3.8
Production	Bil Bu	1.49	- 9.7



U.S. Winter Wheat Acres



Million acres

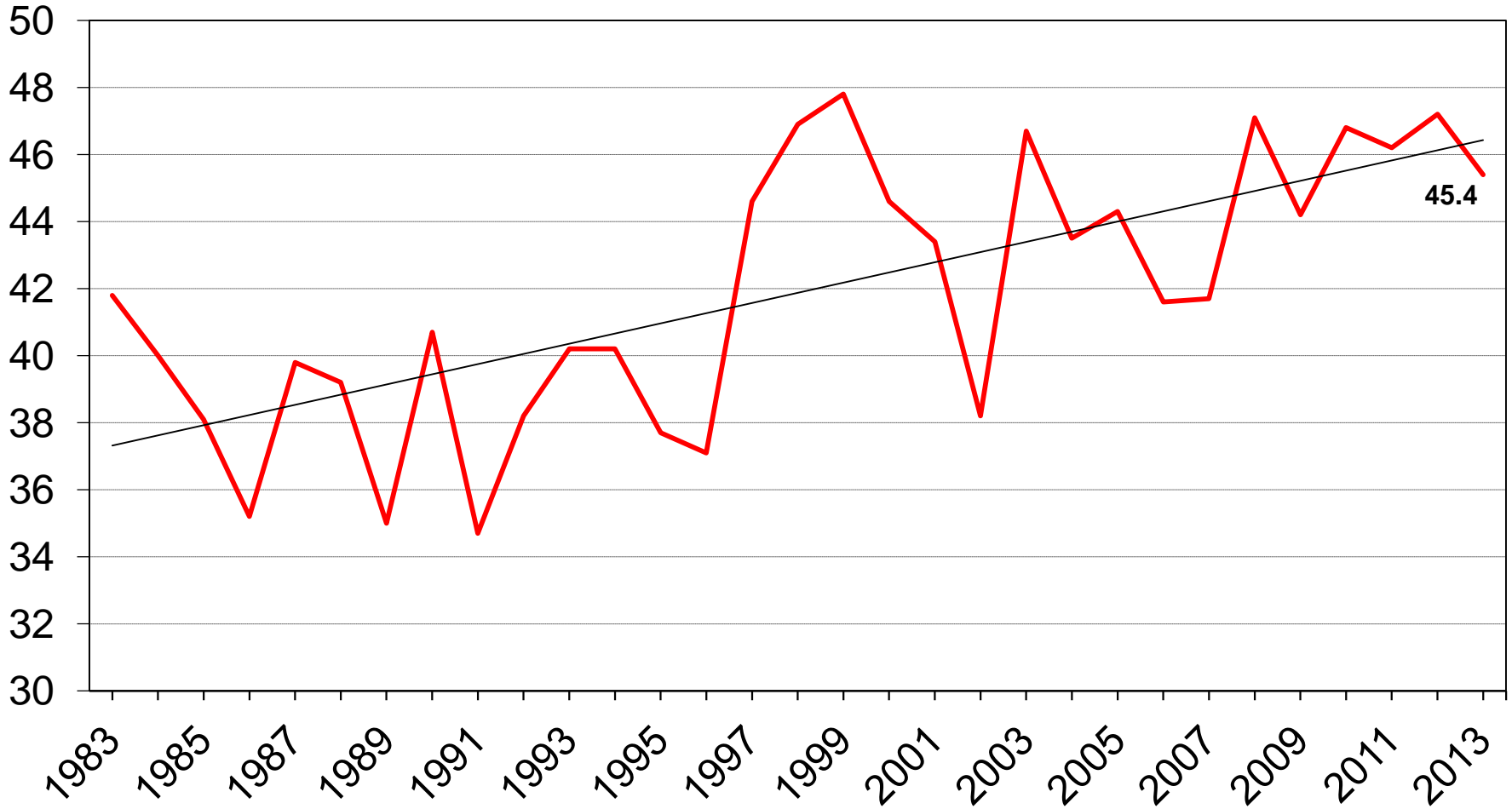




U.S. Winter Wheat Yield



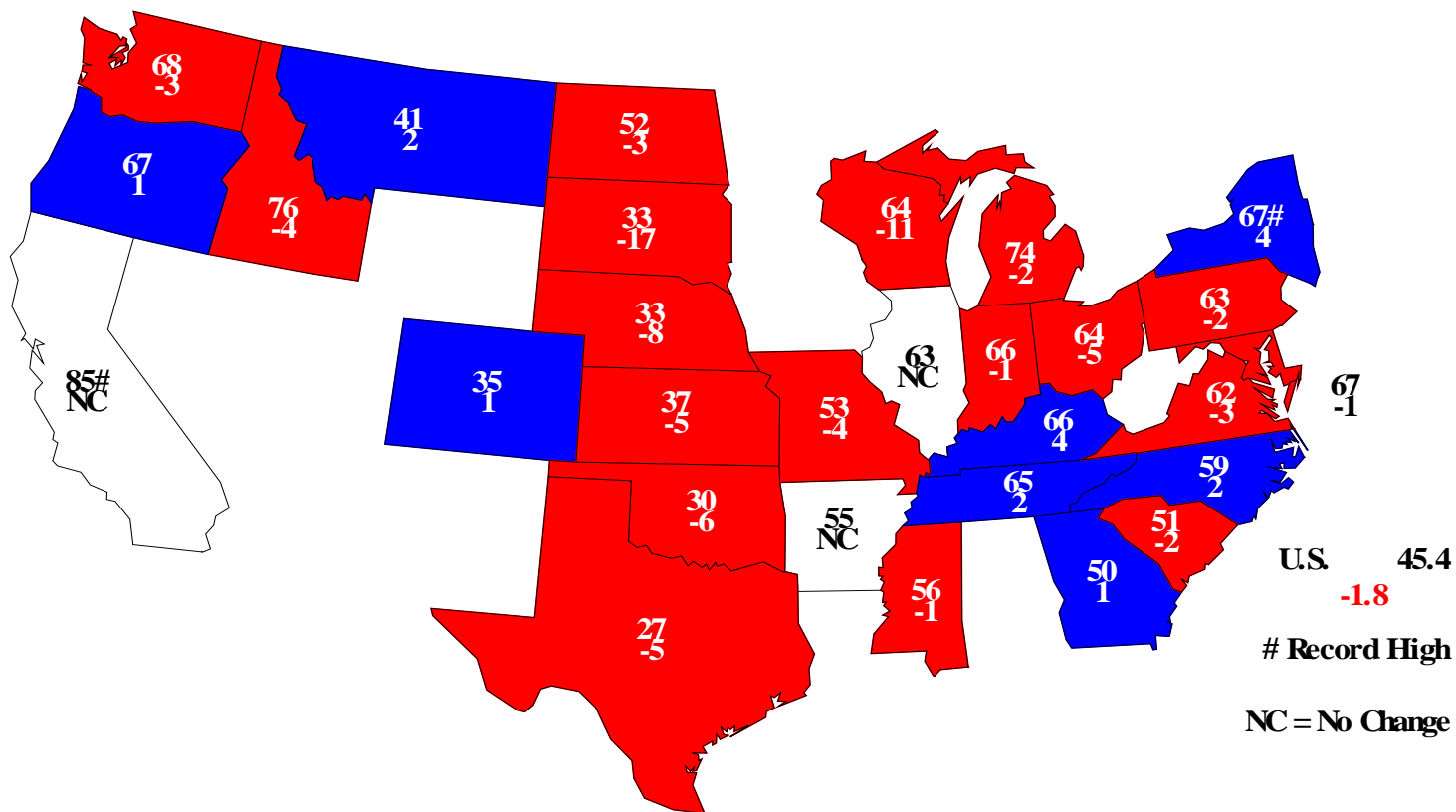
Bushels/acre





Winter Wheat Yield - May 1, 2013

Bushels and Change From Previous Year

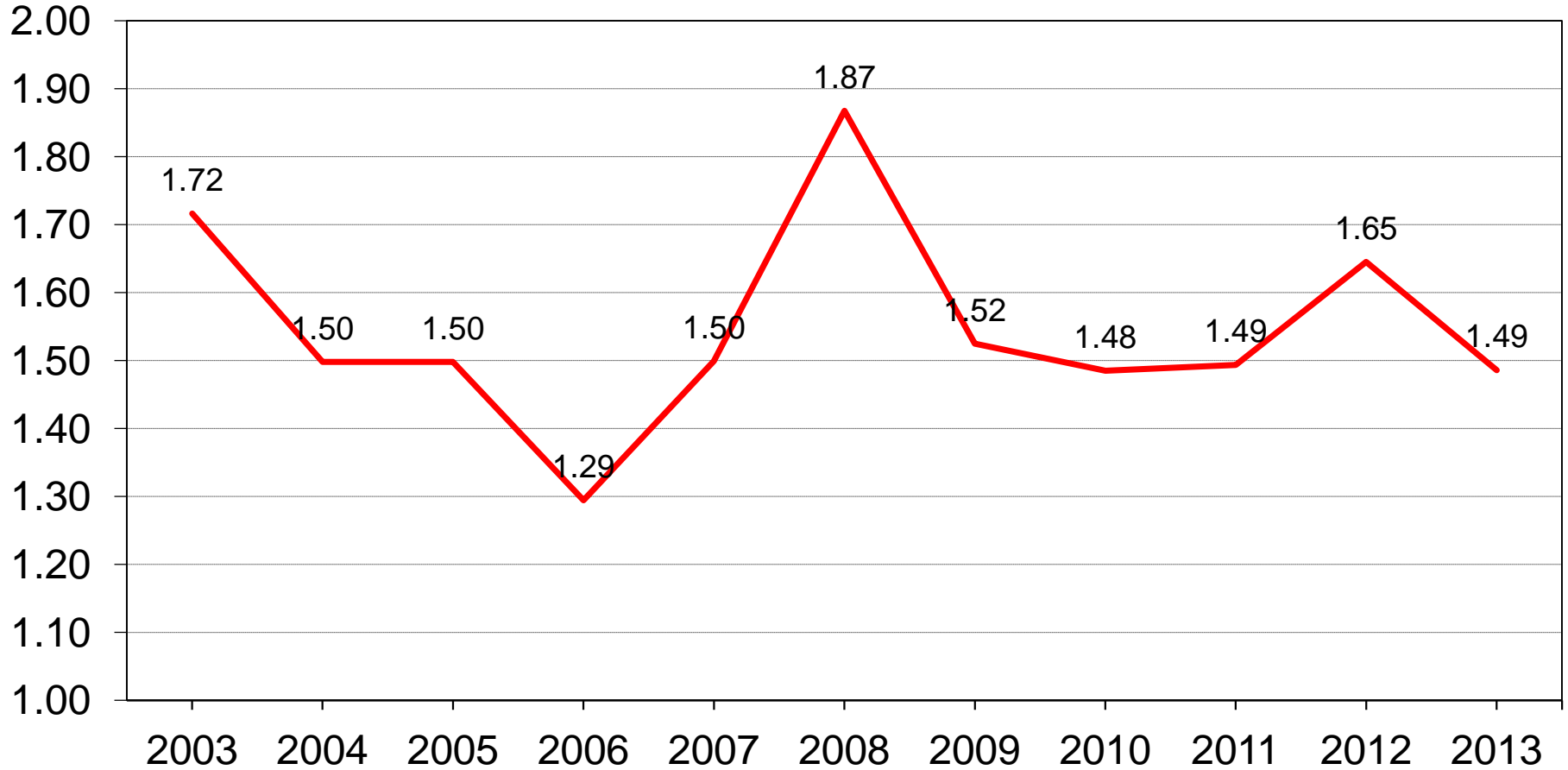




U.S. Winter Wheat Production



Billion bushels





May 2013 Crop Production

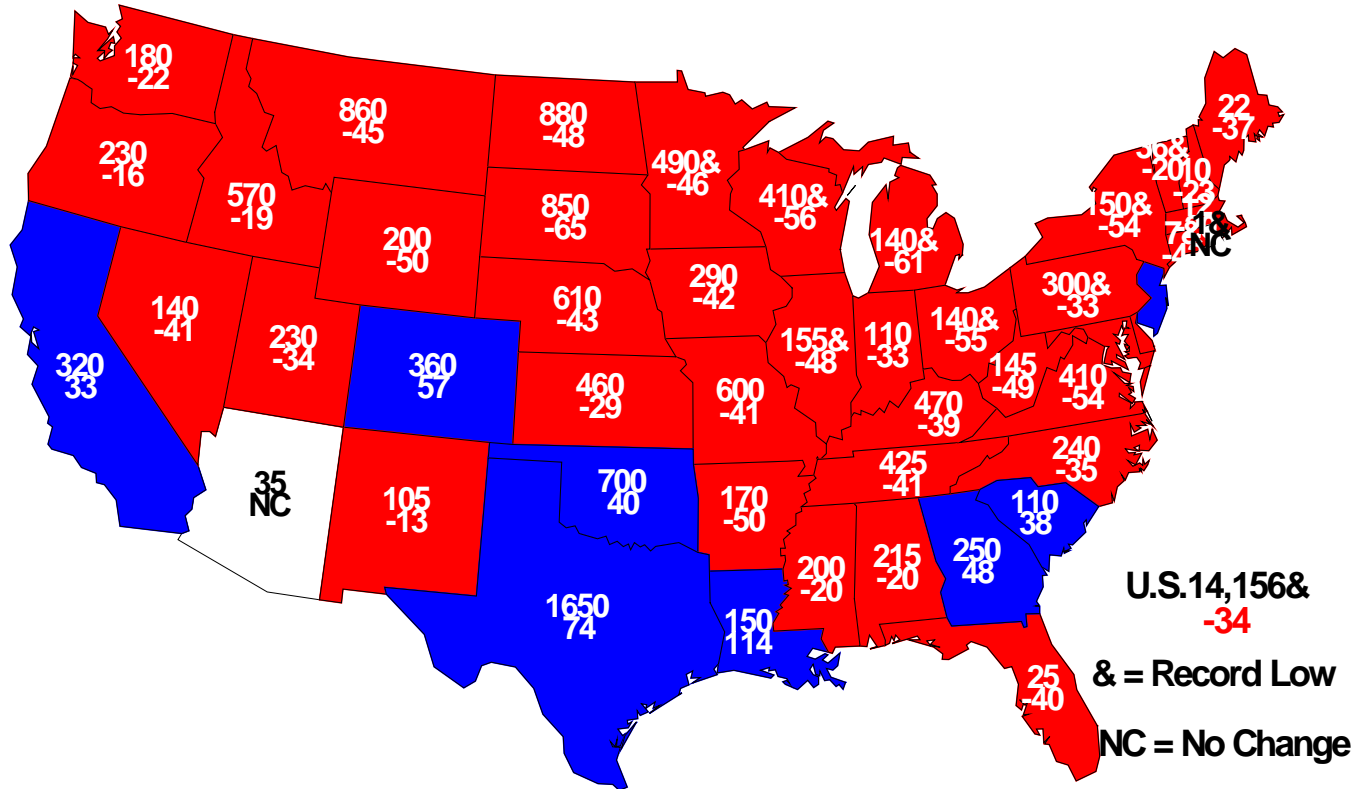
Crop	Unit	May 2013	% Change from Prev Season
Hay Stocks	Mil Tons	14.2	-33.8



2013 All Hay Stocks



Stocks (000) and Percent Change From Previous Year





May 2013 Crop Production

Crop	Unit	May 2013	% Change from Prev Forecast	% Change from Prev Season
Oranges	Mil Tons	8.60	NC	- 4.5
Grapefruit	Mil Tons	1.16	+ 5.1	+ 0.7
Tangerines and Mandarins	Thou Tons	710	- 0.6	+ 9.6
Tangelos	Thou Tons	45.0	NC	- 13.5



May 2013 Crop Production

Crop	Unit	May 2013	% Change from Prev Forecast	% Change from Prev Season
Potatoes Spring	Mil Cwt	21.9	---	- 18.2



May 2013 Crop Production

Crop	Unit	May 2013	% Change from Prev Estimate	% Change from Prev Season
Cotton, All (2012)				
Planted	Mil Ac	12.3	- <0.1	- 16.4
Harvested	Mil Ac	9.37	- 0.6	- 0.9
Yield	Lbs/Ac	887	+ 2.4	+ 12.3
Production	Mil Bales	17.3	+ 1.8	+ 11.2
Tobacco, All (2012)				
Harvested	Thou Ac	336	+ <0.1	+ 3.5
Yield	Lbs/Ac	2,268	NC	+ 23.2
Production	Mil Lbs	763	+ <0.1	+ 27.5



United States Department of Agriculture
National Agricultural Statistics Service

Upcoming Reports

May 31	Agricultural Prices
June 12	Crop Production
June 27	Agricultural Prices
June 28	Acreage Grain Stocks Quarterly Hogs and Pigs



United States Department of Agriculture
National Agricultural Statistics Service



All Reports Available At

www.nass.usda.gov

For Questions

202-720-2127

800-727-9540

nass@nass.usda.gov