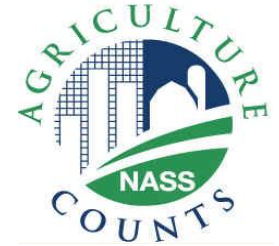




United States Department of Agriculture
National Agricultural Statistics Service



HOGS & PIGS INVENTORY

Executive Briefing

September 1, 2012

September Hogs and Pigs

Data Collection Period: August 31- September 18

Sample Size: 8,042

Collection Methods

Phone, mail, internet, personal interview

Main Data Items

Total Inventory - by class, weight group, and quarter

Sows Farrowing, pig crop, and pigs per litter

U.S. Hogs & Pigs Revisions

		Initial Estimate	Previous Revision	Current Revision	Net Revision	Current Estimate
Mar 2012	All Hogs and Pigs	64.9 million	+210,000 +0.3%	-145,000 -0.2%	+65,000 +0.1%	64.9 million
	Pig Crop	28.7 million		-131,000 -0.5%	-131,000 -0.5%	28.5 million
Jun 2012	All Hogs and Pigs	65.8 million		-70,000 -0.1%		65.8 million

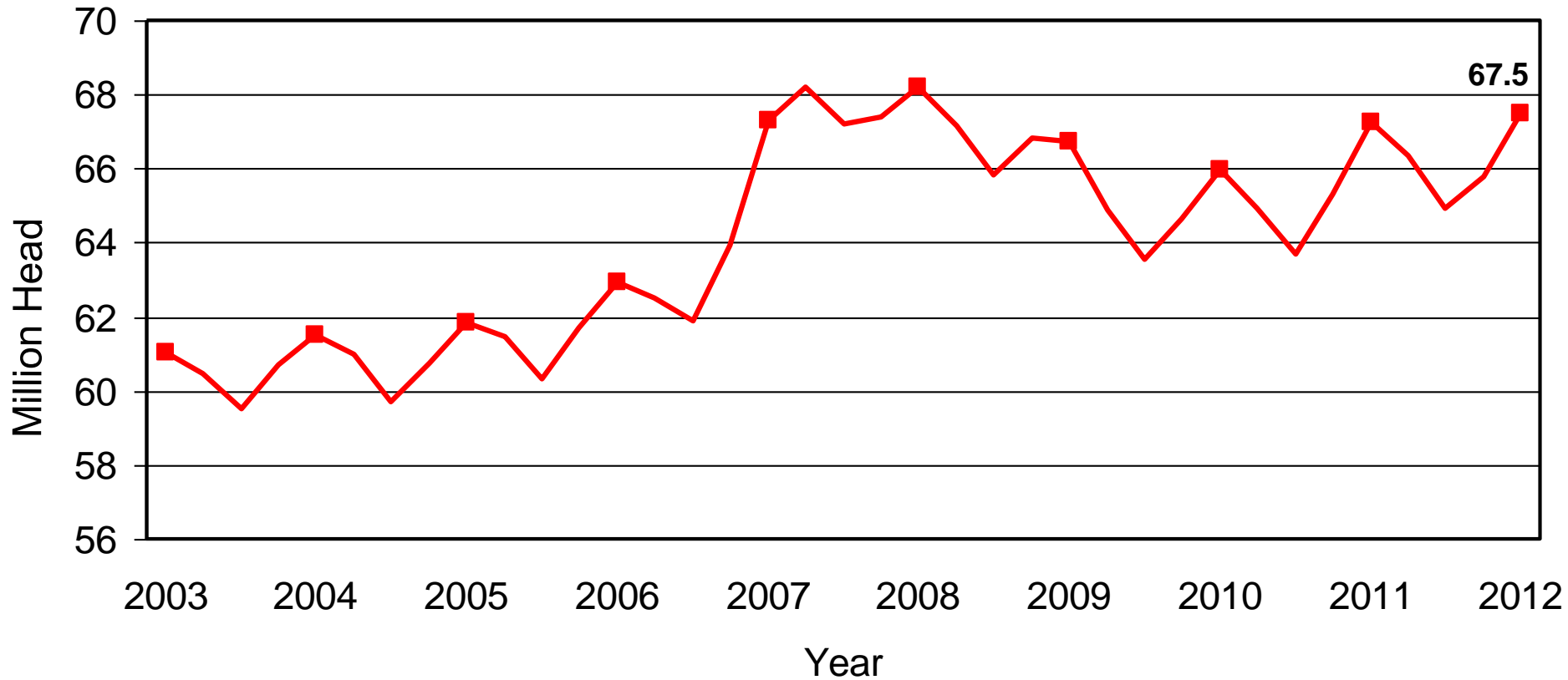


U.S. Hogs & Pigs Inventory September 1, 2012

Inventory Items	(000) Hd	% PY
All Hogs & Pigs	67,472	100.4
Breeding Hogs	5,788	99.7
Market Hogs	61,684	100.4
Jun – Aug Pig Crop	29,286	99.8
Sows Farrowing	2,892	98.8
Litter Rate	Number	% PY
Jun – Aug 2012	10.13	101.0
Farrowing Intentions	(000) Hd	% PY
Sep – Nov 2012	2,850	97.3
Dec 2012 – Feb 2013	2,821	98.5

U.S. Quarterly Hogs and Pigs Inventory

September 1, 2012

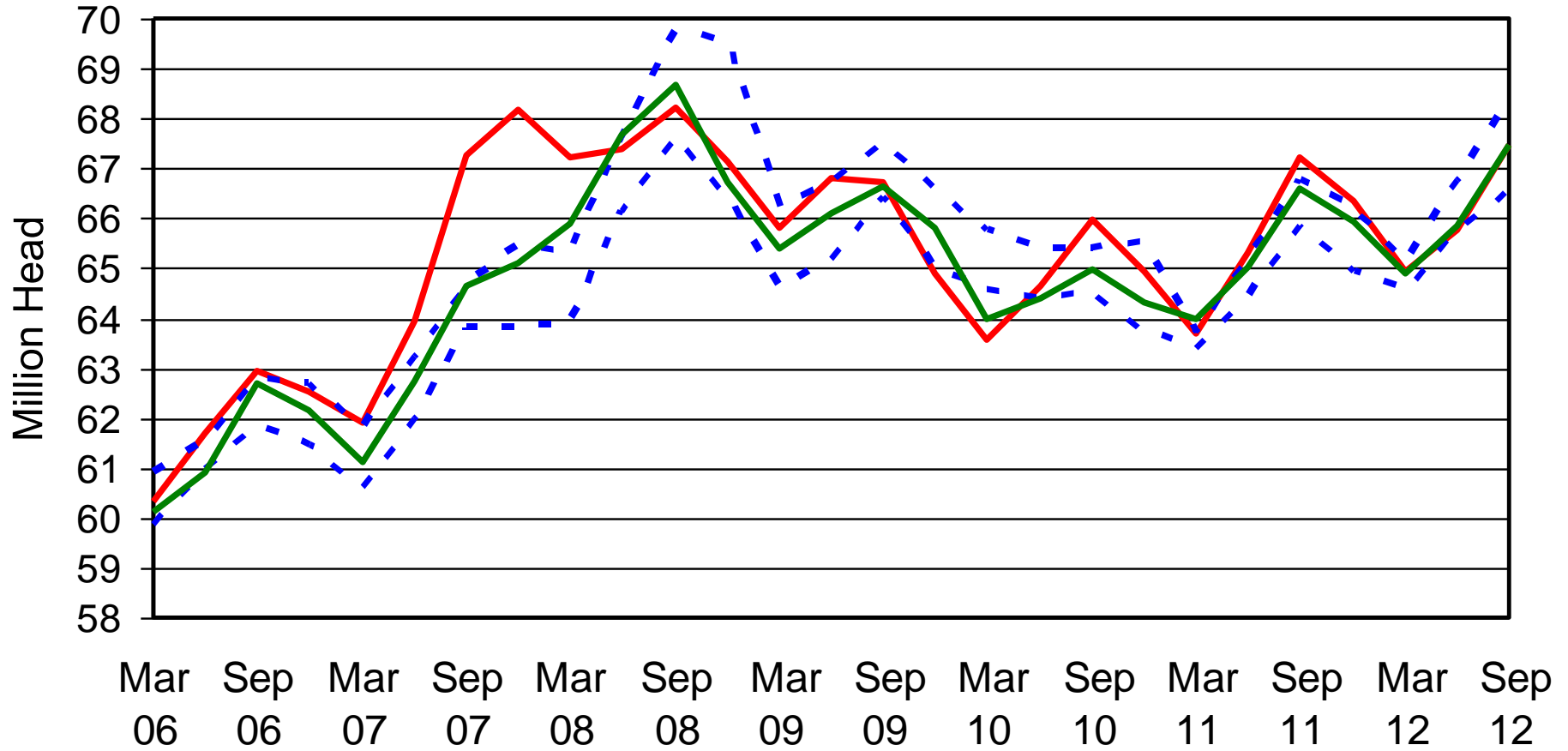


NASS Estimates Compared to Trade Expectations

Percent of Previous Year

Inventory Items	NASS Estimate	Trade Average	Trade Range
All Hogs & Pigs	100.4%	100.7%	99.0% – 101.7%
Breeding Hogs	99.7%	99.9%	98.5% – 100.8%
Market Hogs	100.4%	100.8%	99.0% – 101.9%
Jun – Aug Pig Crop	99.8%	100.2%	99.8% – 100.9%
Farrowing Intentions			
Sep – Nov 2012	97.3%	98.7%	97.6% – 99.7%
Dec 2012 – Feb 2013	98.5%	98.4%	97.3% – 100.3%

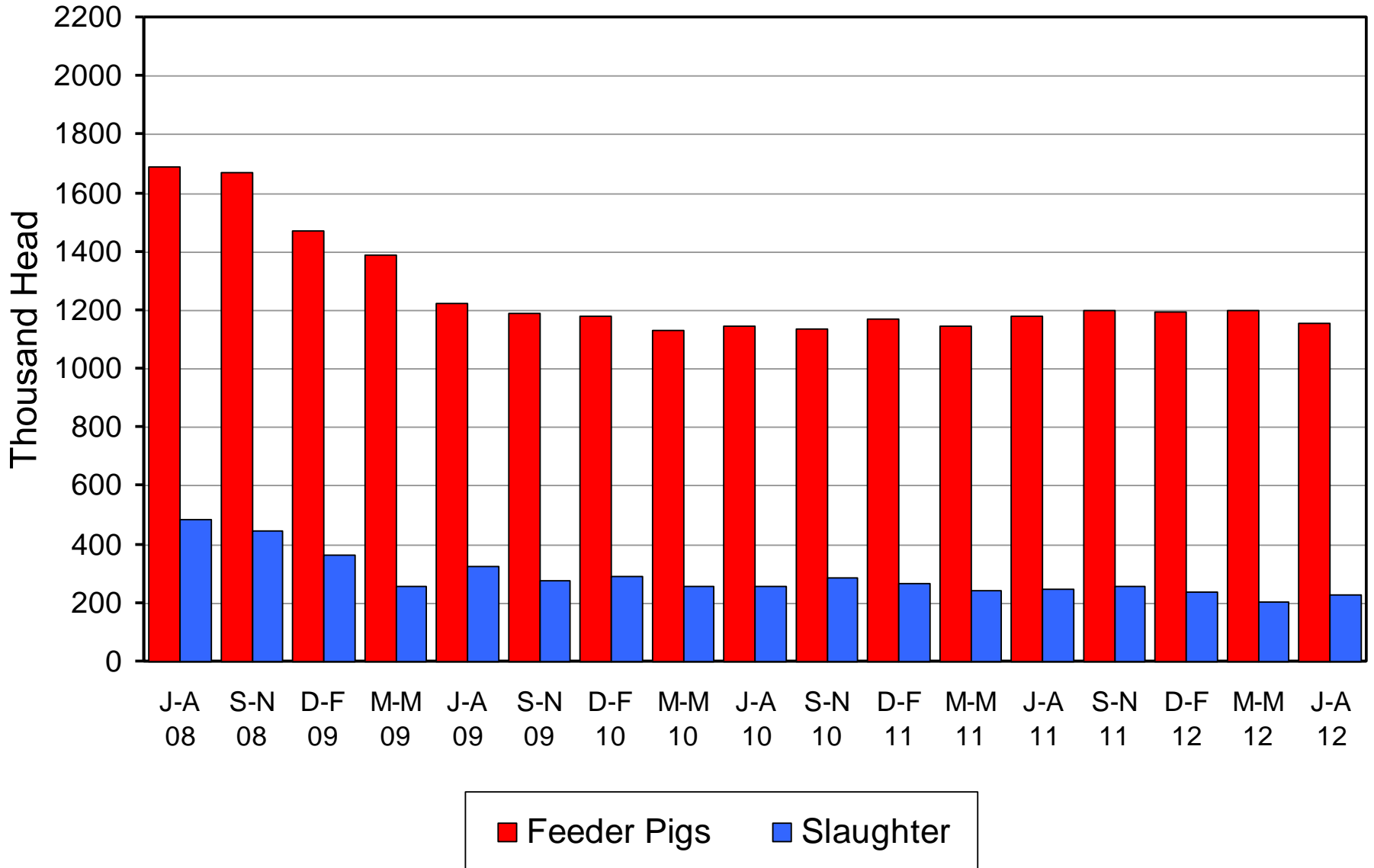
All Hogs and Pigs Board vs Trade Expectations



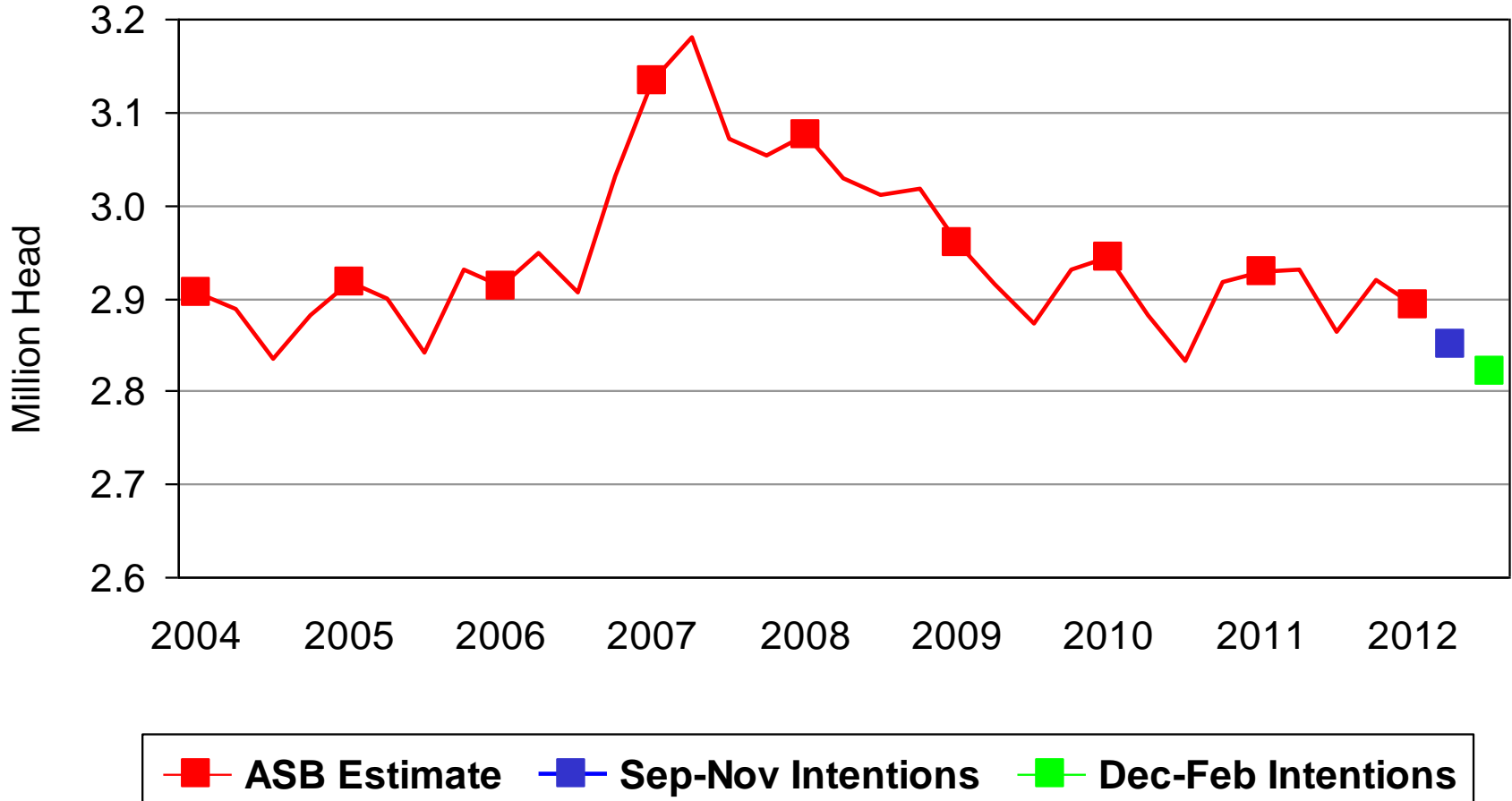
— ASB Final Est - - - Trade Range — ASB First Est

Canadian Imports by Quarter

Feeder Pigs and Slaughter Hogs



U.S. Quarterly Sows Farrowed June - August



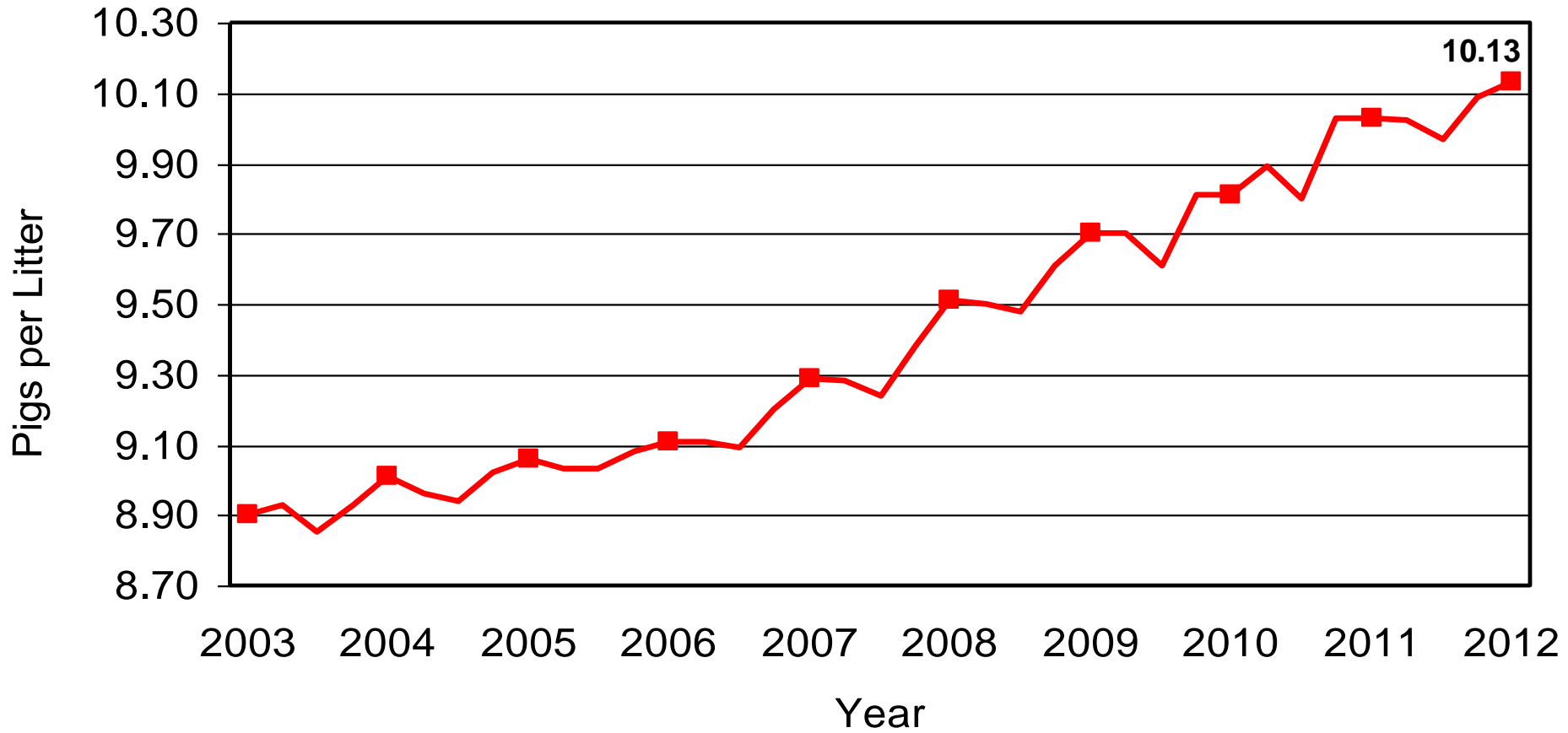


Breeding Herd Inventory Disposition & Utilization

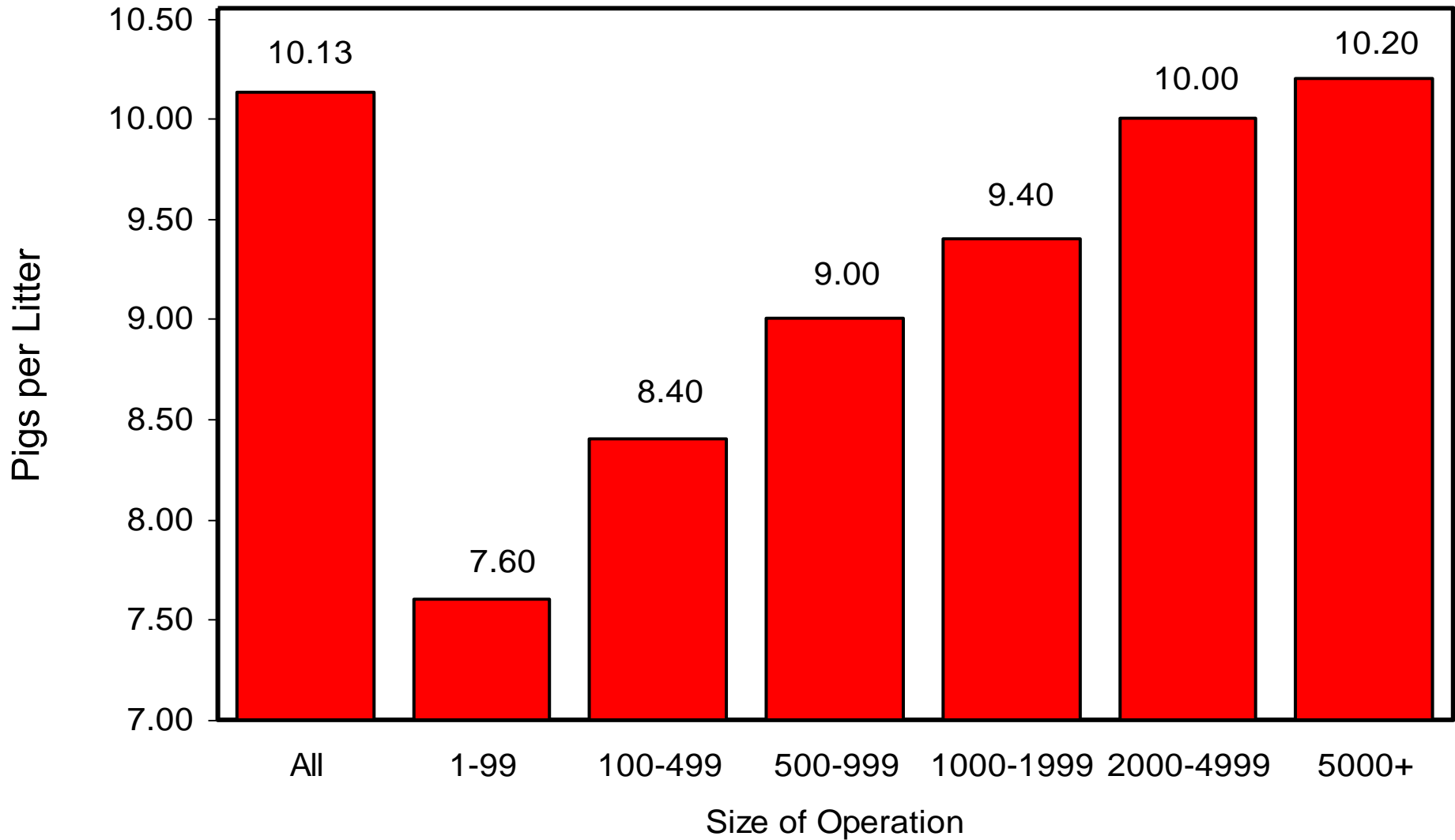


Year	Jun 1 Estimate	Slaughter	Additions	Sep 1 Estimate	Sow Utilization
	(000) Hd	(000) Hd	(000) Hd	(000) Hd	Percent
2003	6,036	883	795	5,948	48%
2004	5,947	891	916	5,972	49%
2005	5,988	846	851	5,993	49%
2006	6,080	896	915	6,099	48%
2007	6,169	945	984	6,208	51%
2008	6,131	1,017	947	6,061	50%
2009	5,968	963	870	5,875	50%
2010	5,788	818	800	5,770	51%
2011	5,803	848	851	5,806	50%
2012	5,862	858	784	5,788	49%

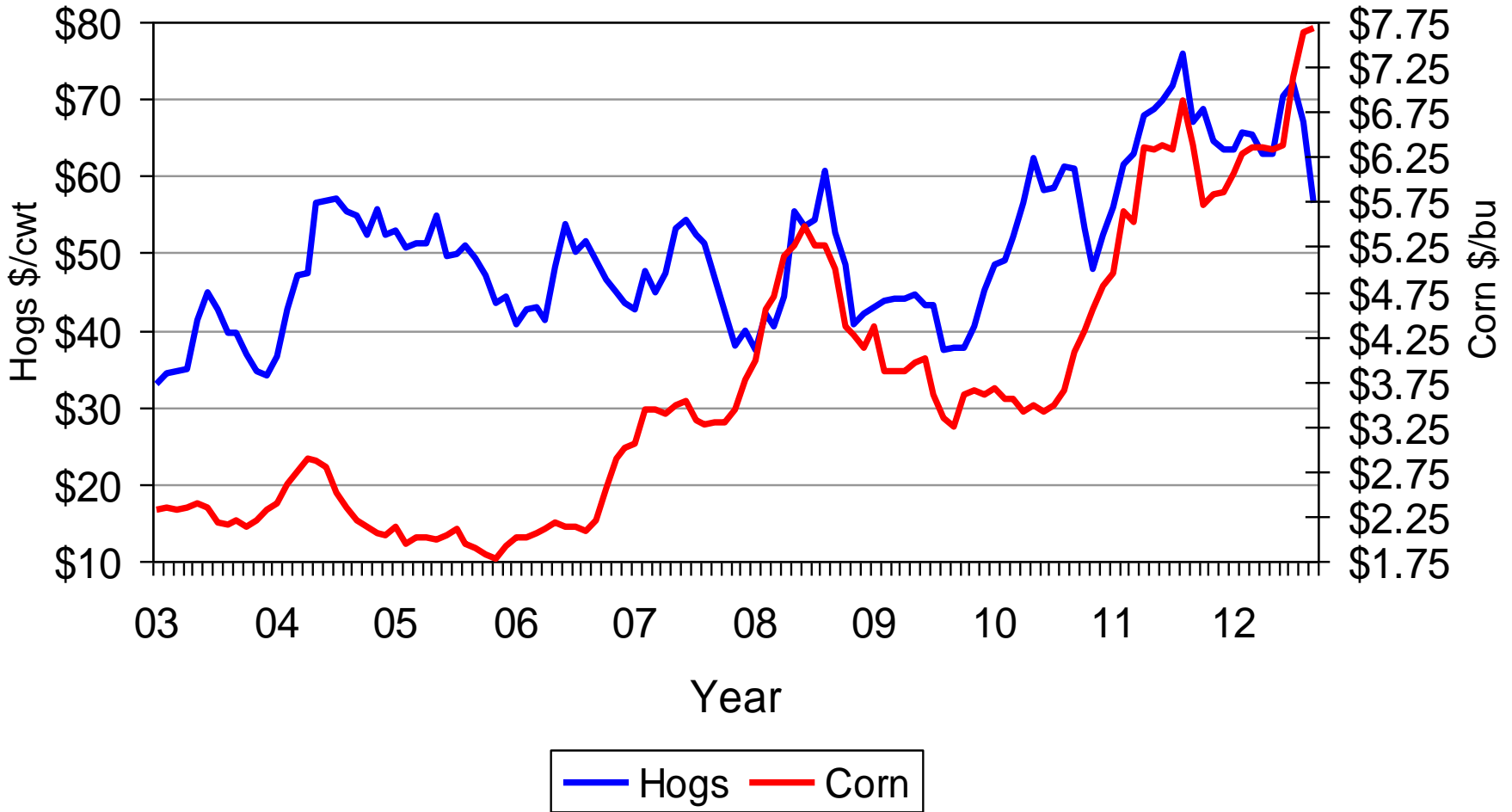
U.S. Quarterly Pigs per Litter June - August



U.S. Pigs per Litter by Size of Operation June – August 2012

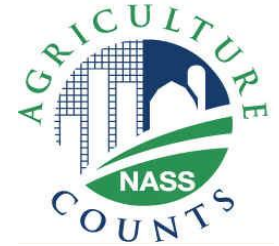


U.S. Prices Received by Farmers for Hogs & Corn





United States Department of Agriculture
National Agricultural Statistics Service



Upcoming Reports

October 11	Crop Production
October 19	Cattle on Feed Milk Production
October 31	Agricultural Prices