



United States Department of Agriculture
National Agricultural Statistics Service



**PROSPECTIVE PLANTINGS
GRAIN STOCKS
RICE STOCKS**

Executive Summary

MARCH 30, 2012

8:30 AM



Contents

Field Crops	Stocks
Principal Crops Planted Acres	Corn
Feed Grain Acres	Soybean
Food Grain Acres	All Wheat
Oilseed Acres	Rough Rice
Other Crop Acres	

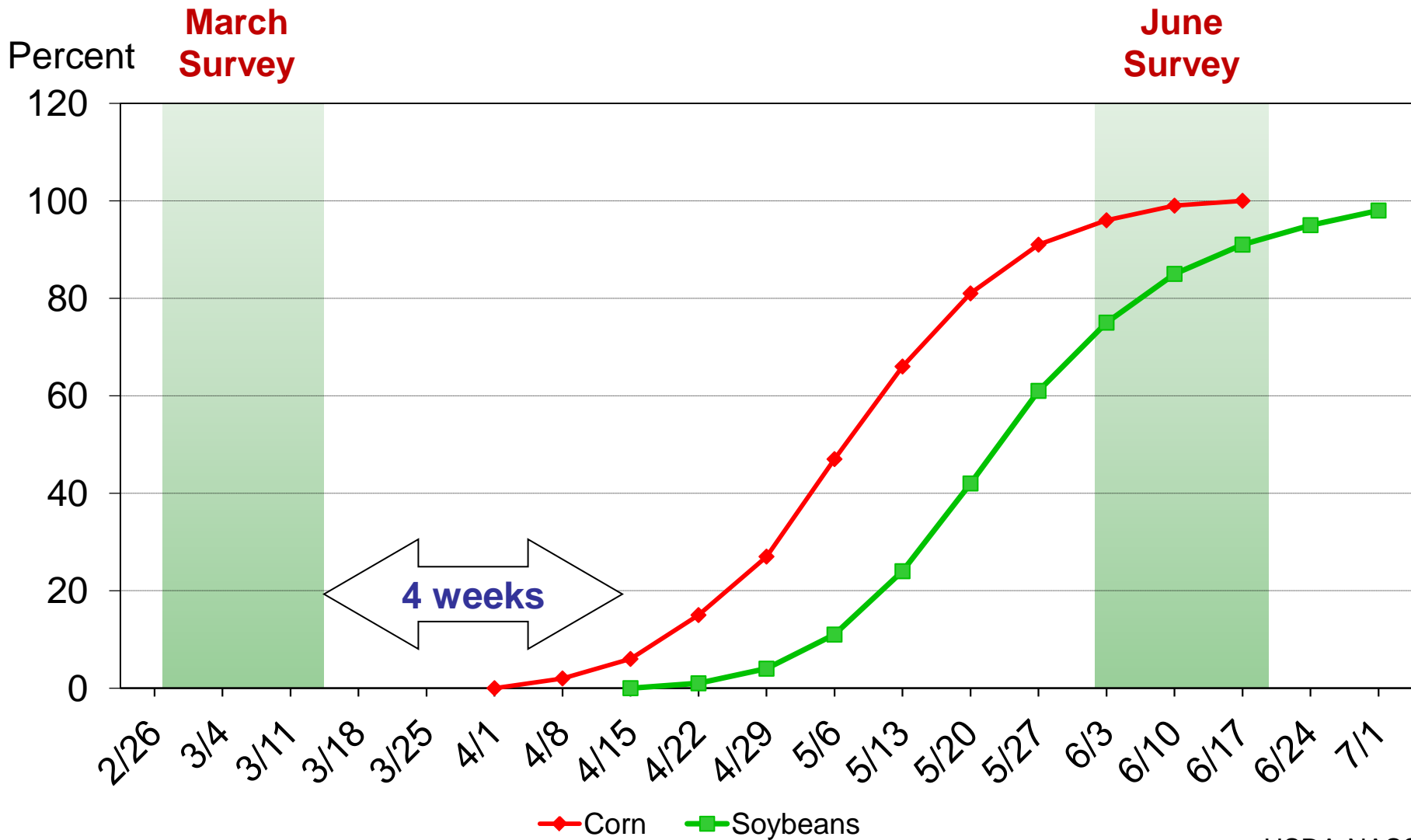


Survey Overview

	March Ag Survey	Off-Farm Grain Stocks Survey
Survey Type	Farmer Reported	Reported
Collection Method	Mail, Phone, Internet, Personal Interview	Mail, Phone, Internet, Personal Interview
Items Collected	Acreage Intentions, On-Farm Stocks	Grains and Oilseeds On Hand
States	All except AK and HI	All except AK and HI
Sample Size	~84,600	~8,900 Facilities
Collection Period	Feb 24 - Mar 16	Feb 24 - Mar 16

Acres Intended vs. Actual Planted Acres

Usual Planting Progress





U.S. Principal Crops Planted Acres

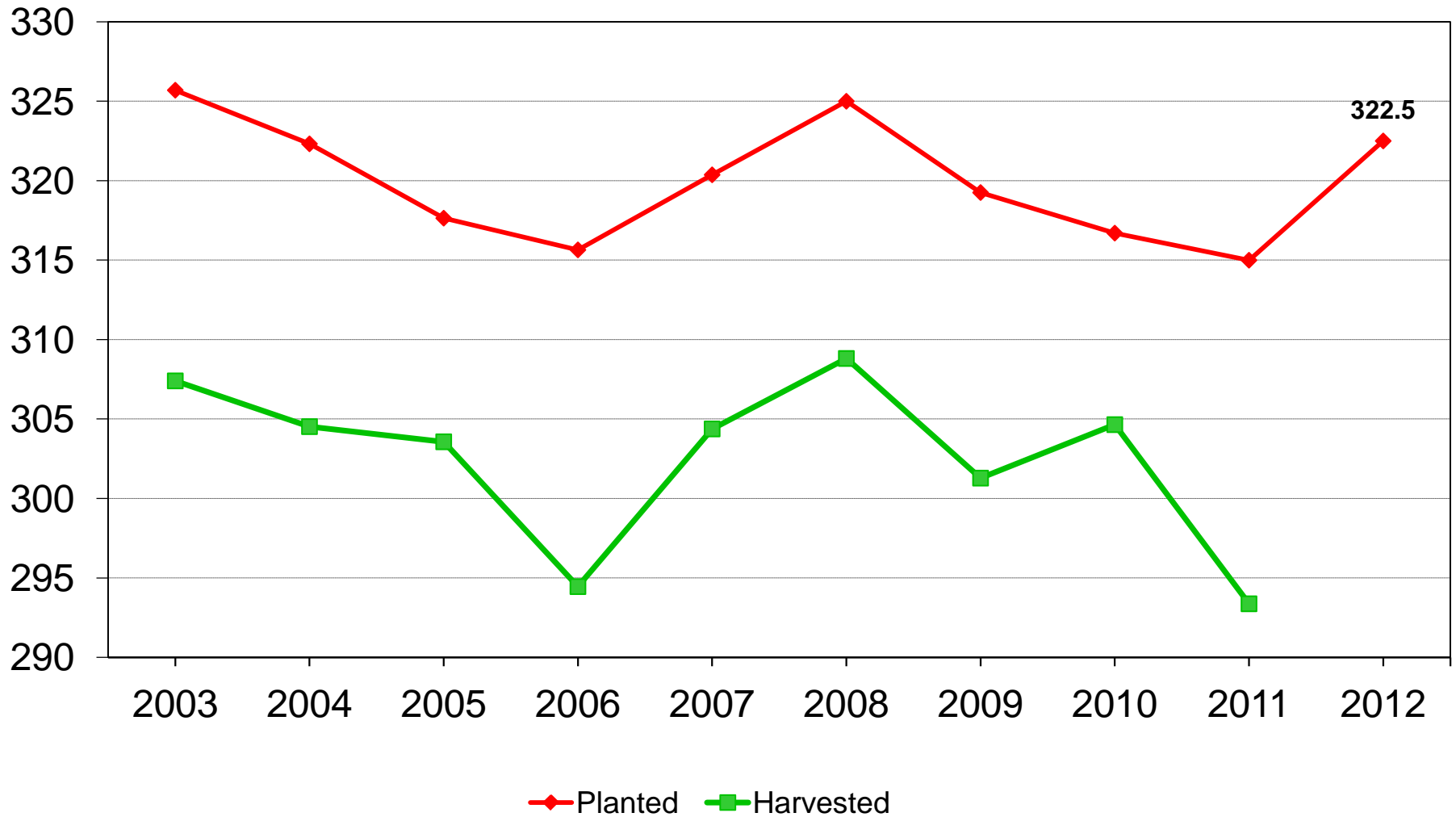
Year	Principal Crops	Change from Previous Year
<i>--Million Acres--</i>		
2003	325.7	- 1.6
2004	322.3	- 3.4
2005	317.6	- 4.7
2006	315.6	- 2.0
2007	320.4	+ 4.7
2008	325.0	+ 4.6
2009	319.3	- 5.7
2010	316.7	- 2.6
2011	315.0	- 1.7
2012	322.5	+ 7.5



U.S. Principal Crop Acres



Million acres



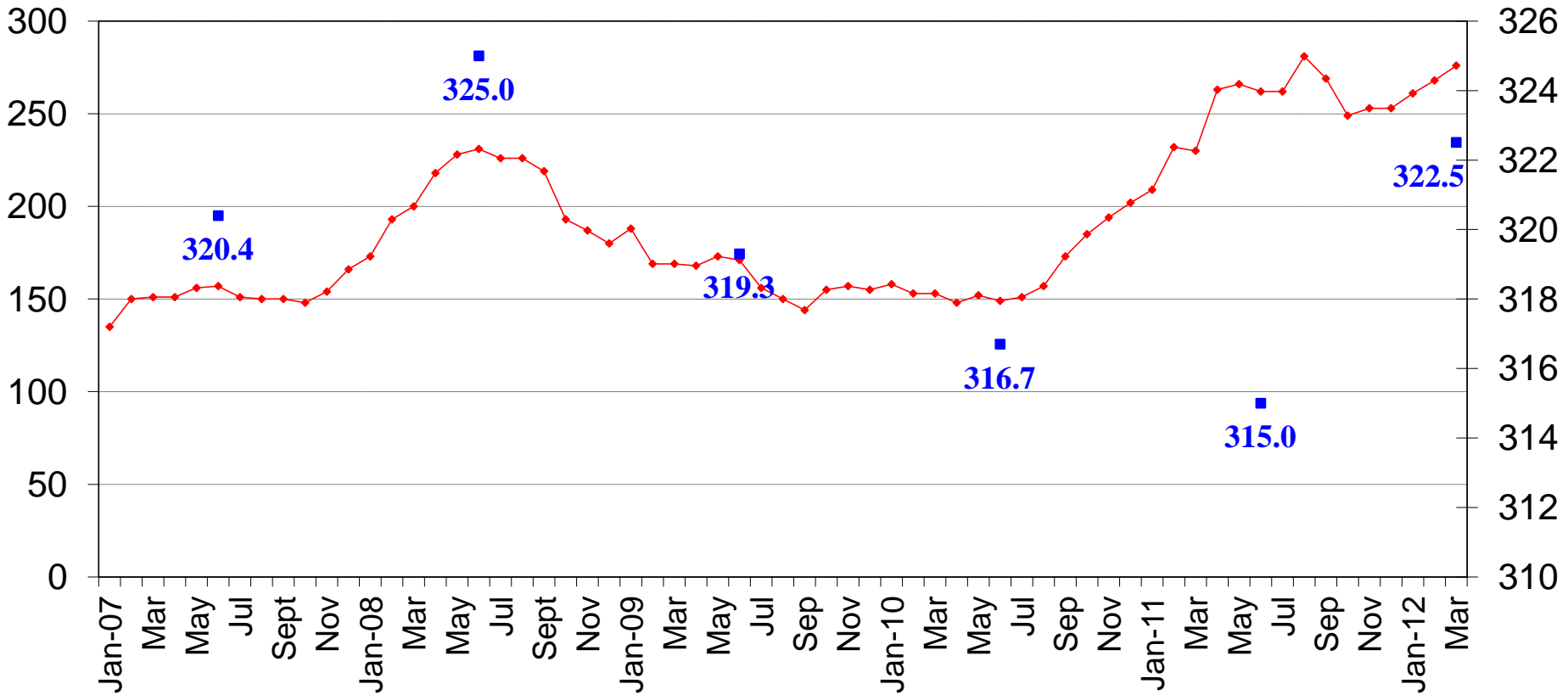


Feed Grain & Hay Price Index and Principal Crop Acres (2007-2012)



Percent
(1990-92=100)

Million Acres

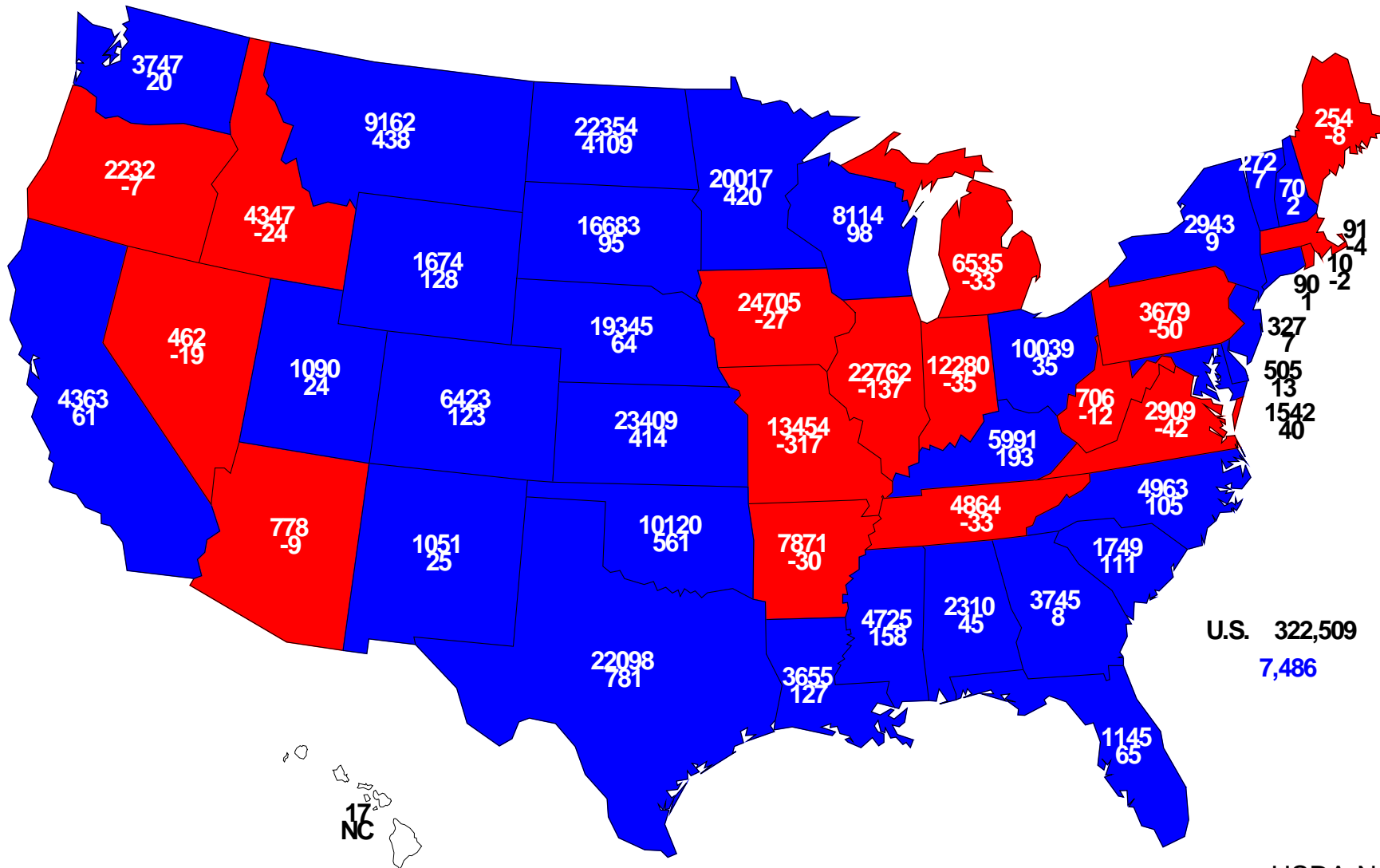


◆ Feed Grain & Hay Price Index
 ■ Principal Crop Acres



2012 Principal Crops Planted

Acres (000) and Change From Previous Year

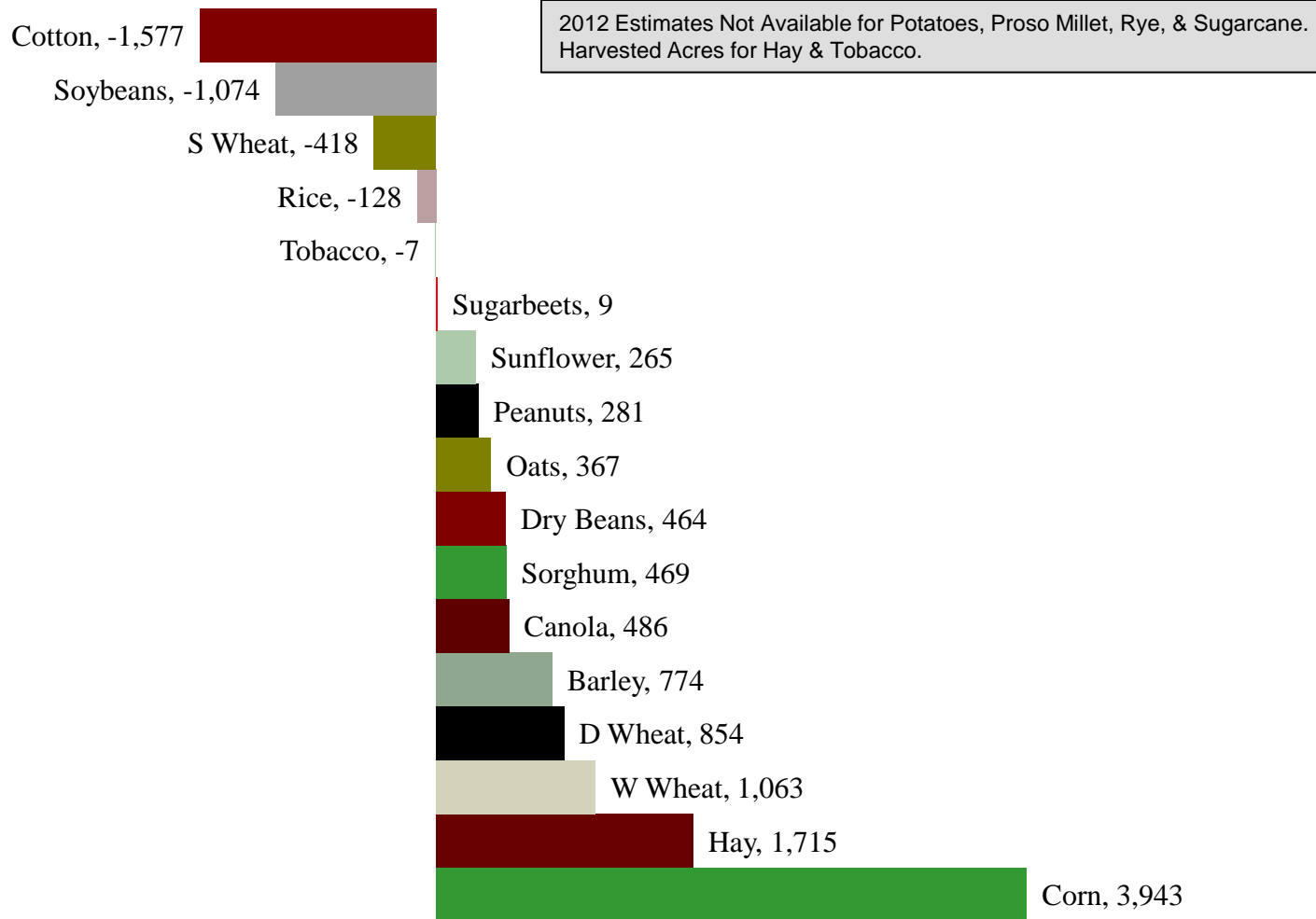


U.S. 322,509
7,486



Change in Planted Acres (000)

2012 Compared With 2011

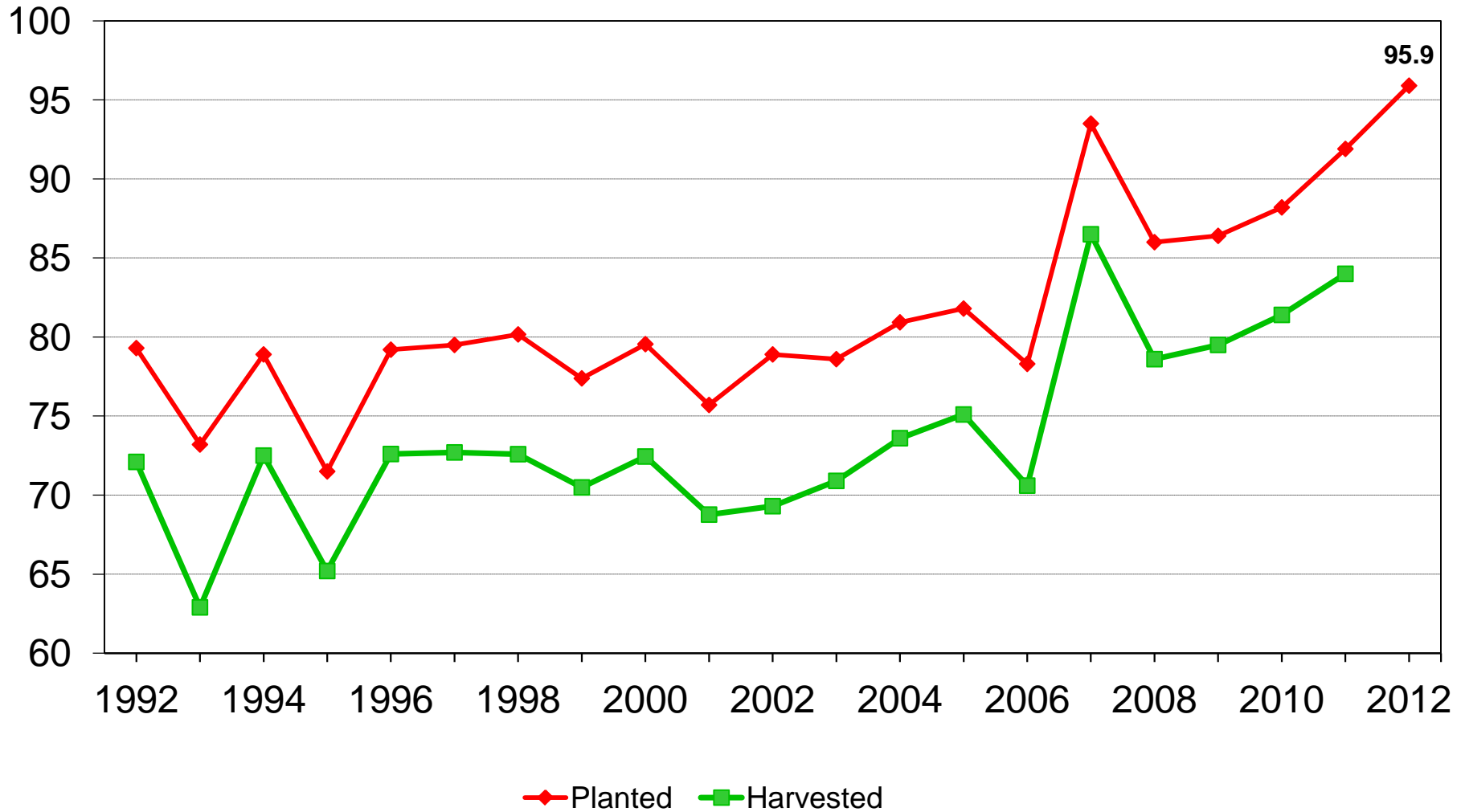




U.S. Corn Acres



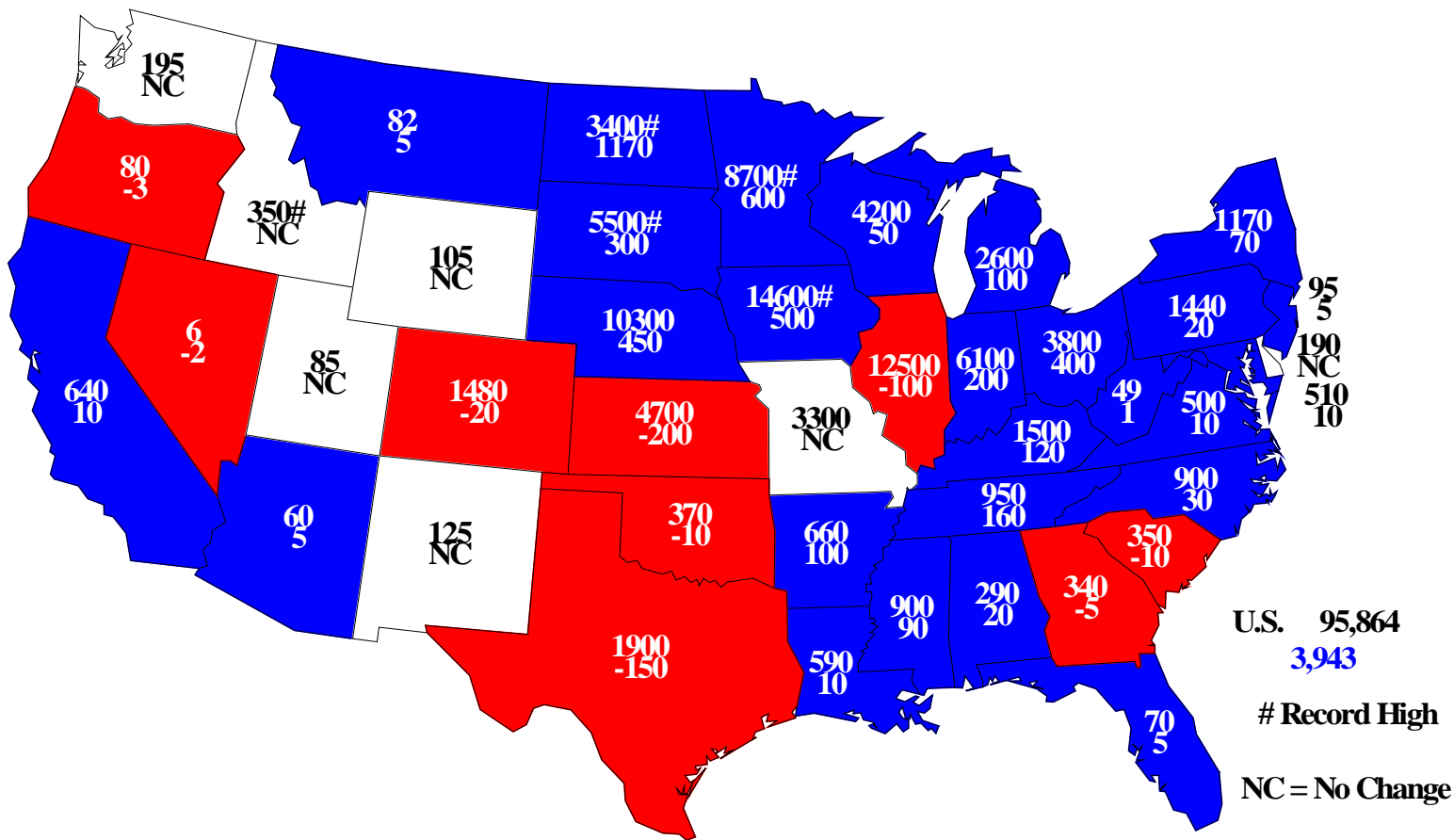
Million acres





2012 Corn Planted

Acres (000) and Change From Previous Year

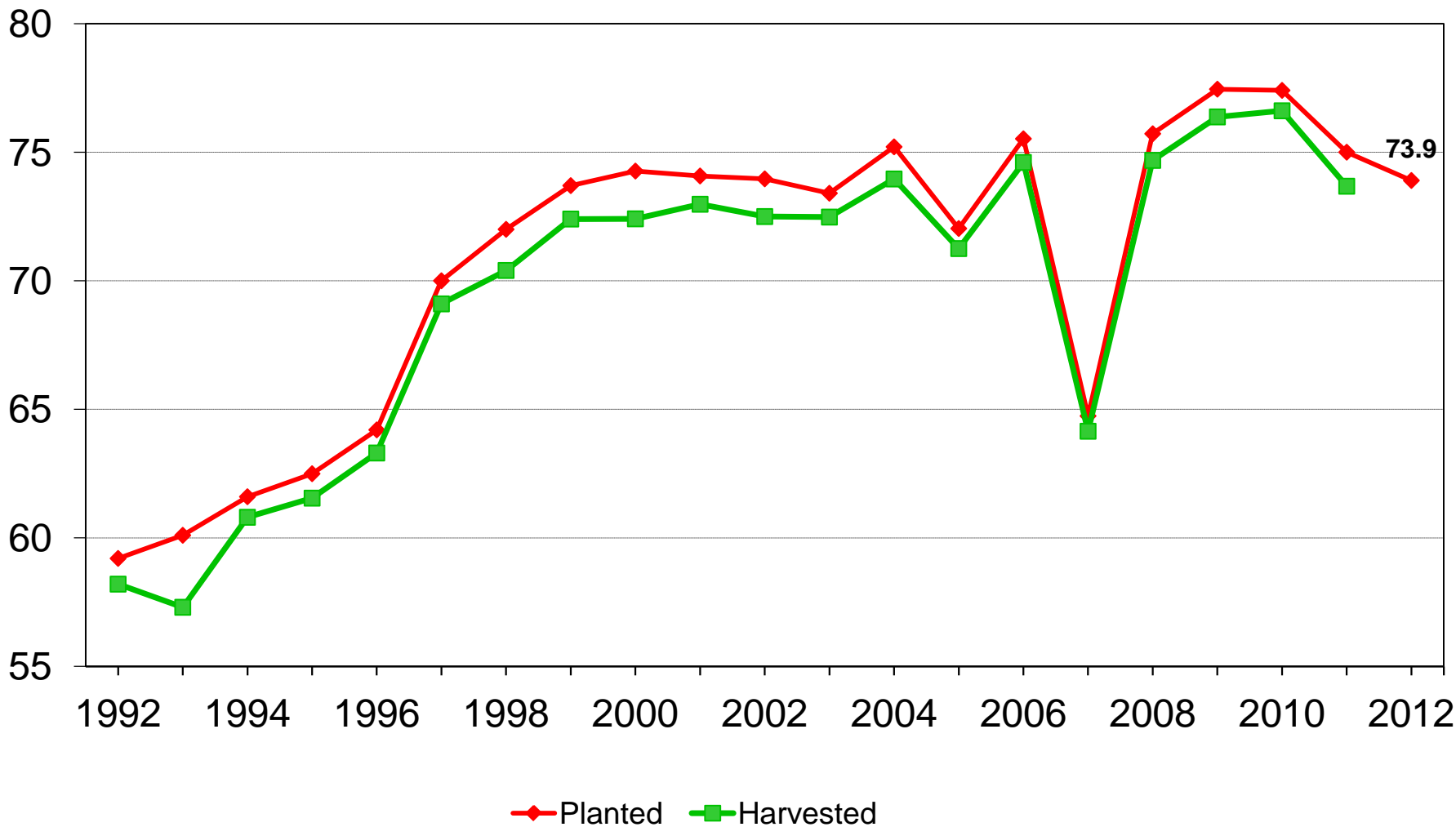




U.S. Soybean Acres



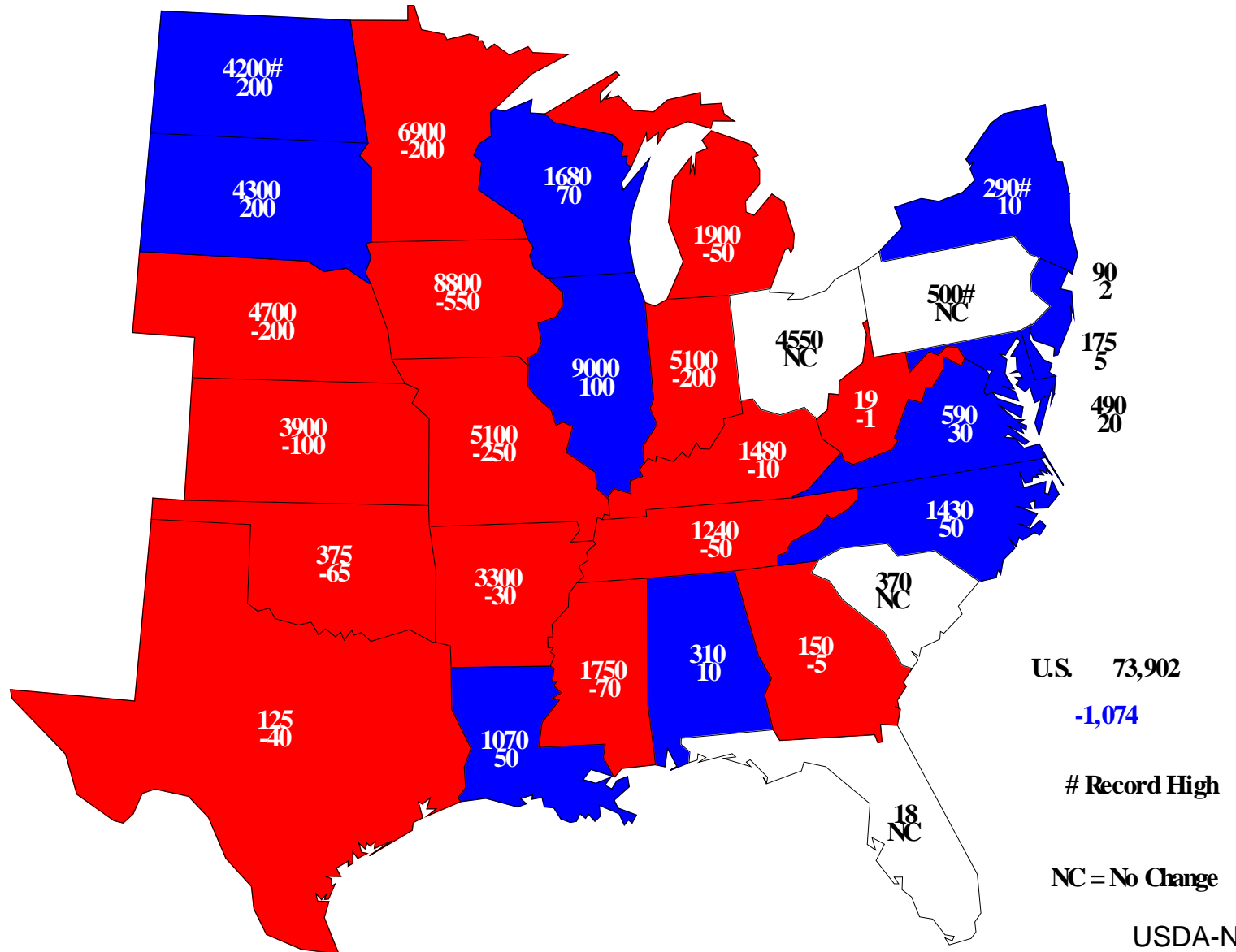
Million acres





2012 Soybeans Planted

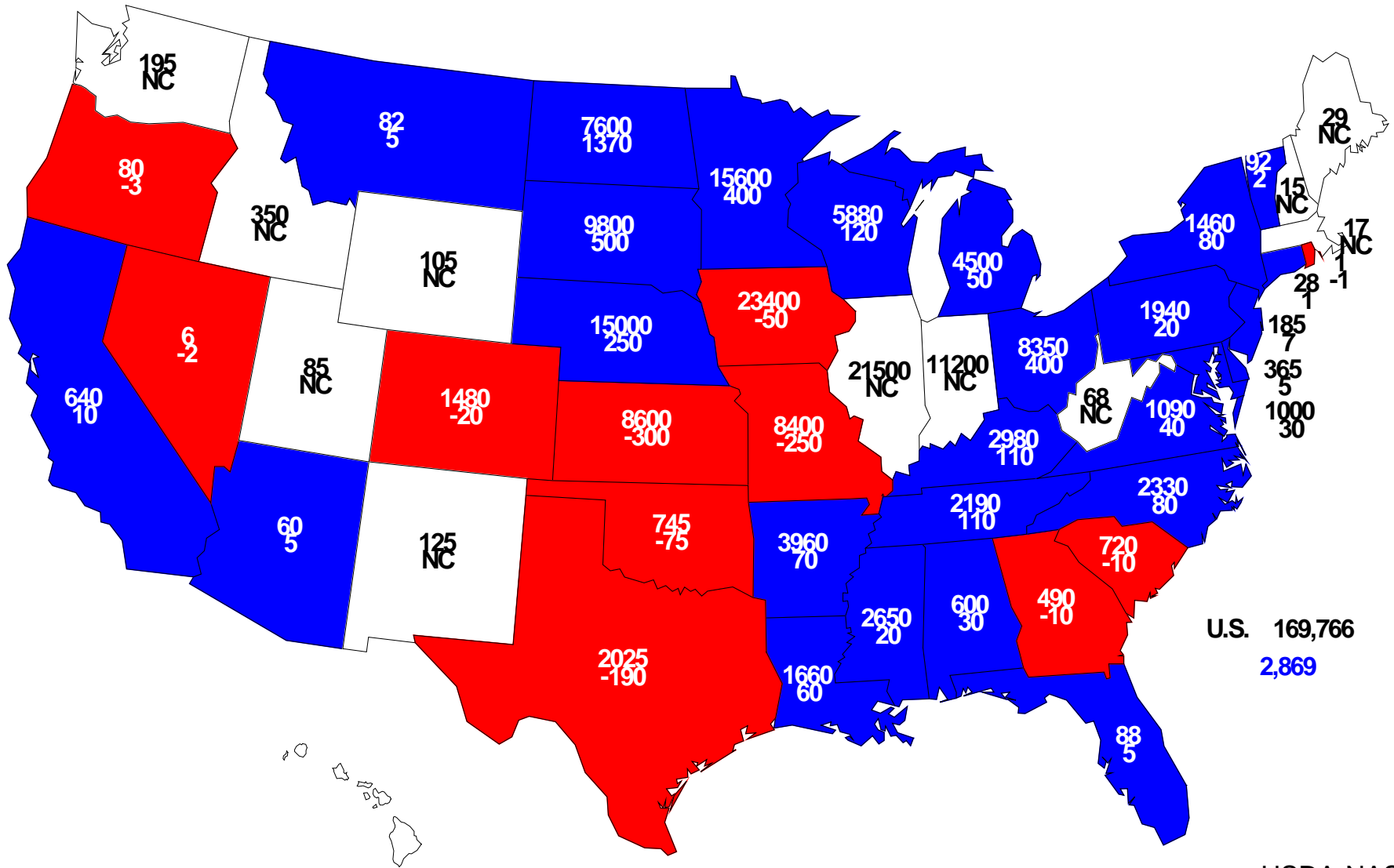
Acres (000) and Change From Previous Year





2012 Combined Corn & Soybeans Planted

Acres (000) and Change From Previous Year

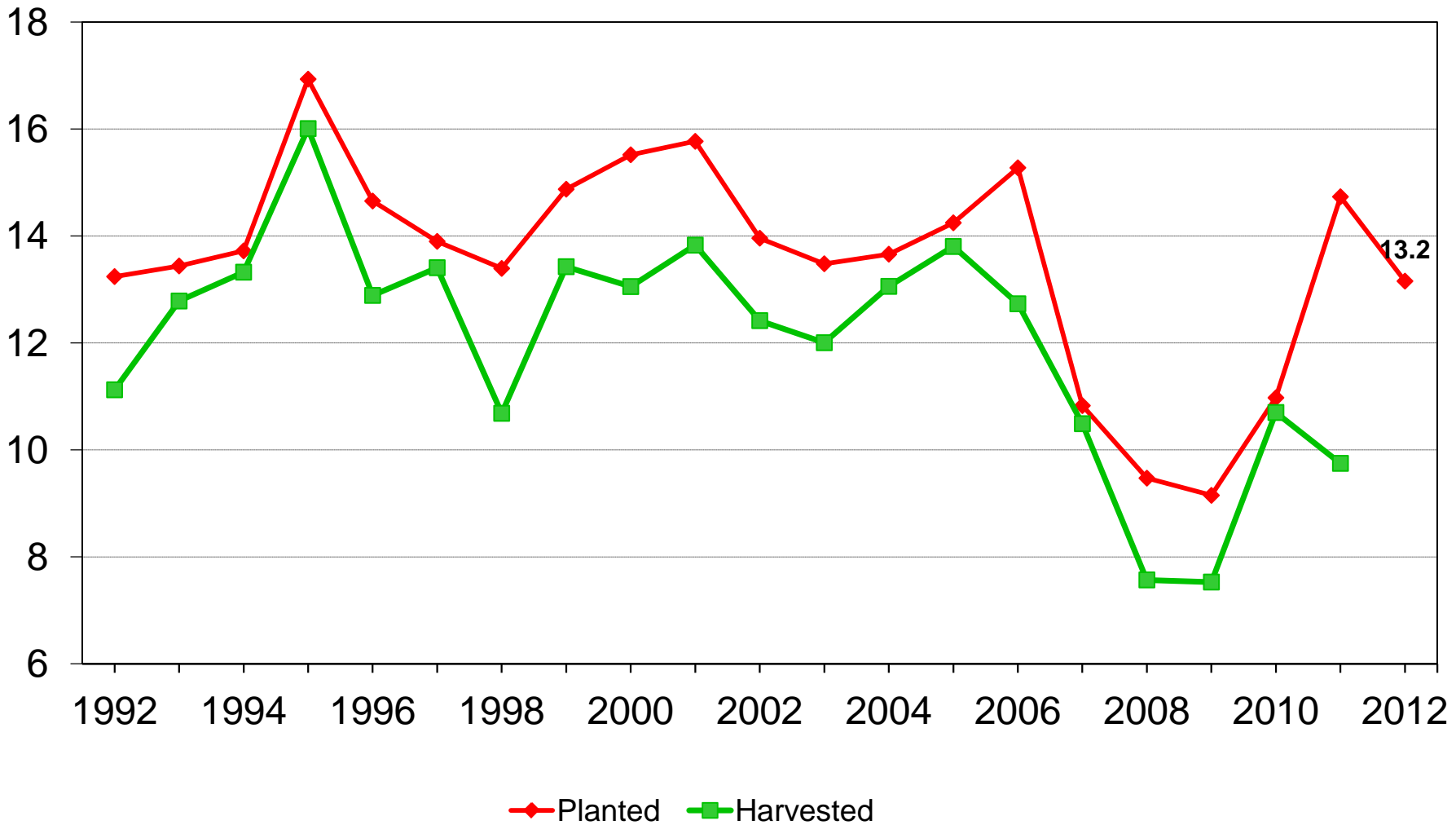




U.S. All Cotton Acres



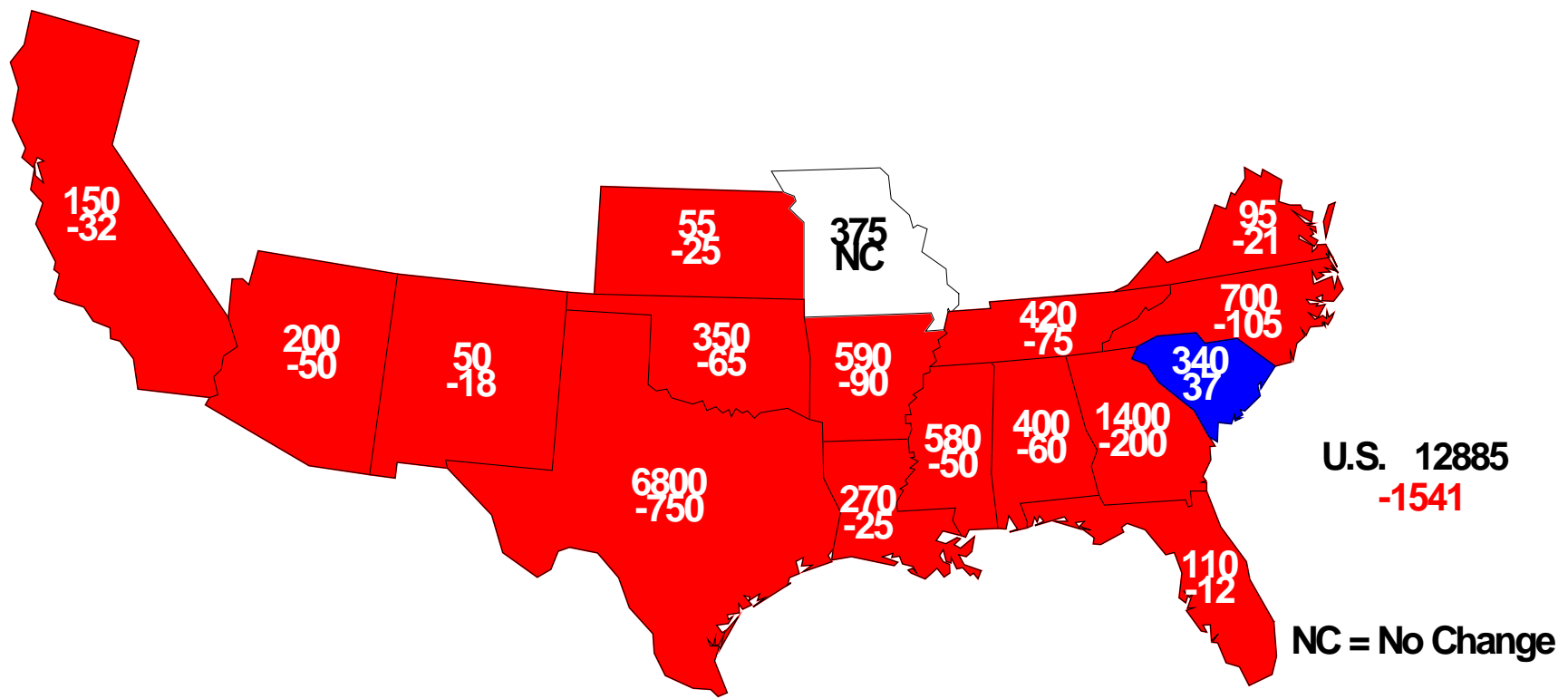
Million acres





2012 Upland Cotton Planted

Acres (000) and Change From Previous Year



U.S. 12885
-1541

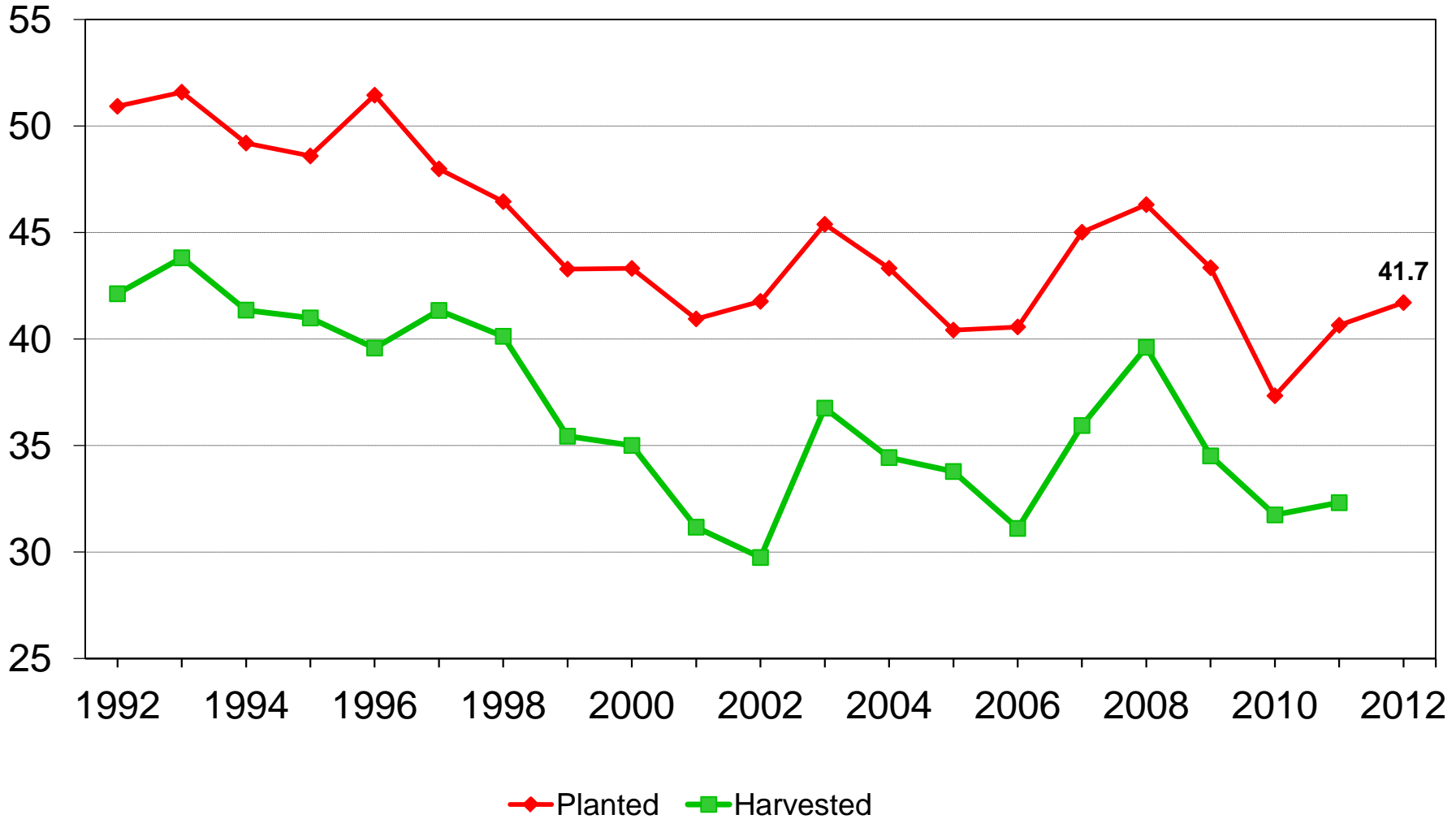
NC = No Change



U.S. Winter Wheat Acres



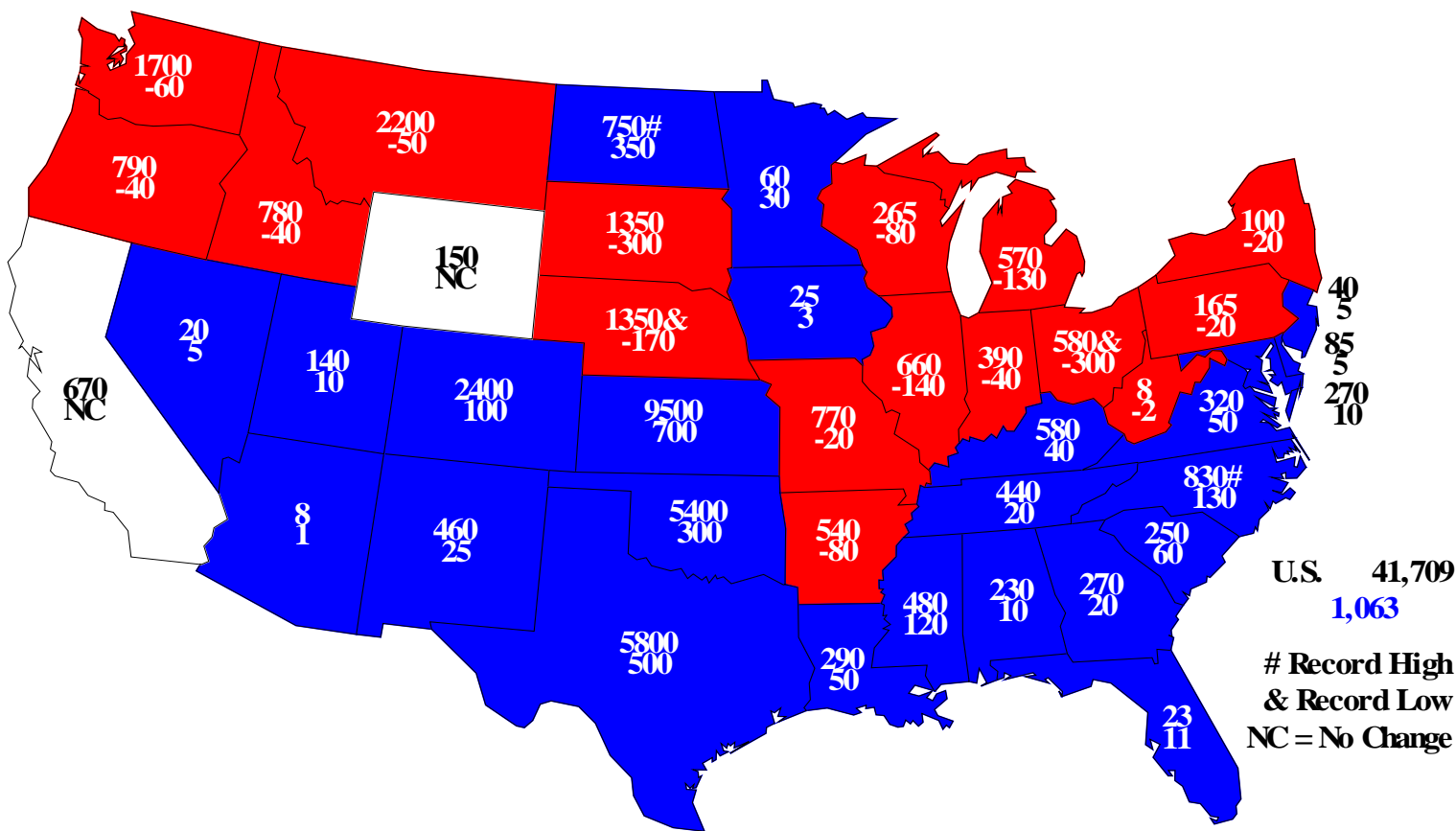
Million acres





Winter Wheat Planted, 2012

Acres(000) and Change From Previous Year

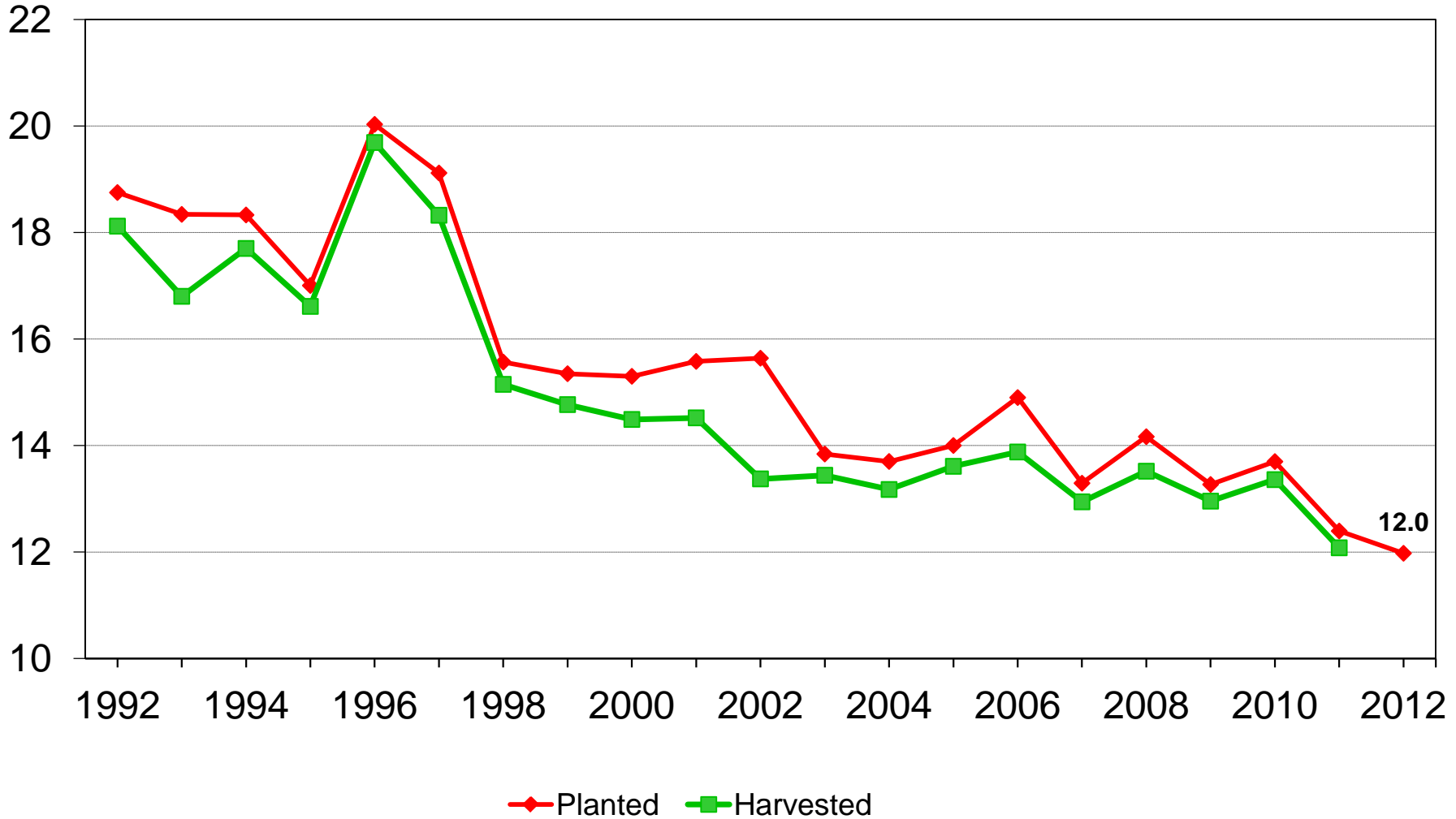




U.S. Other Spring Wheat Acres



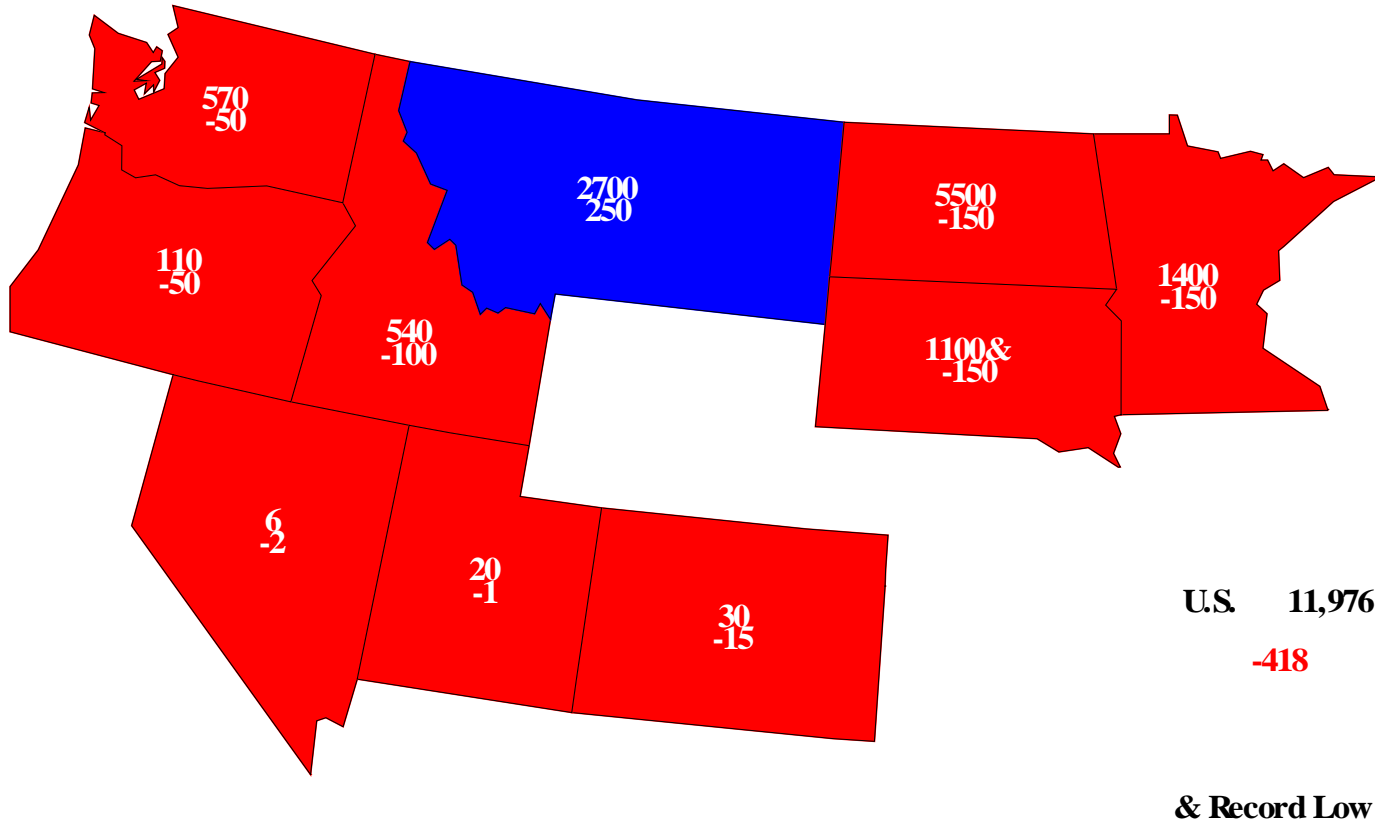
Million acres





Other Spring Wheat Planted, 2012

Acres(000) and Change From Previous Year

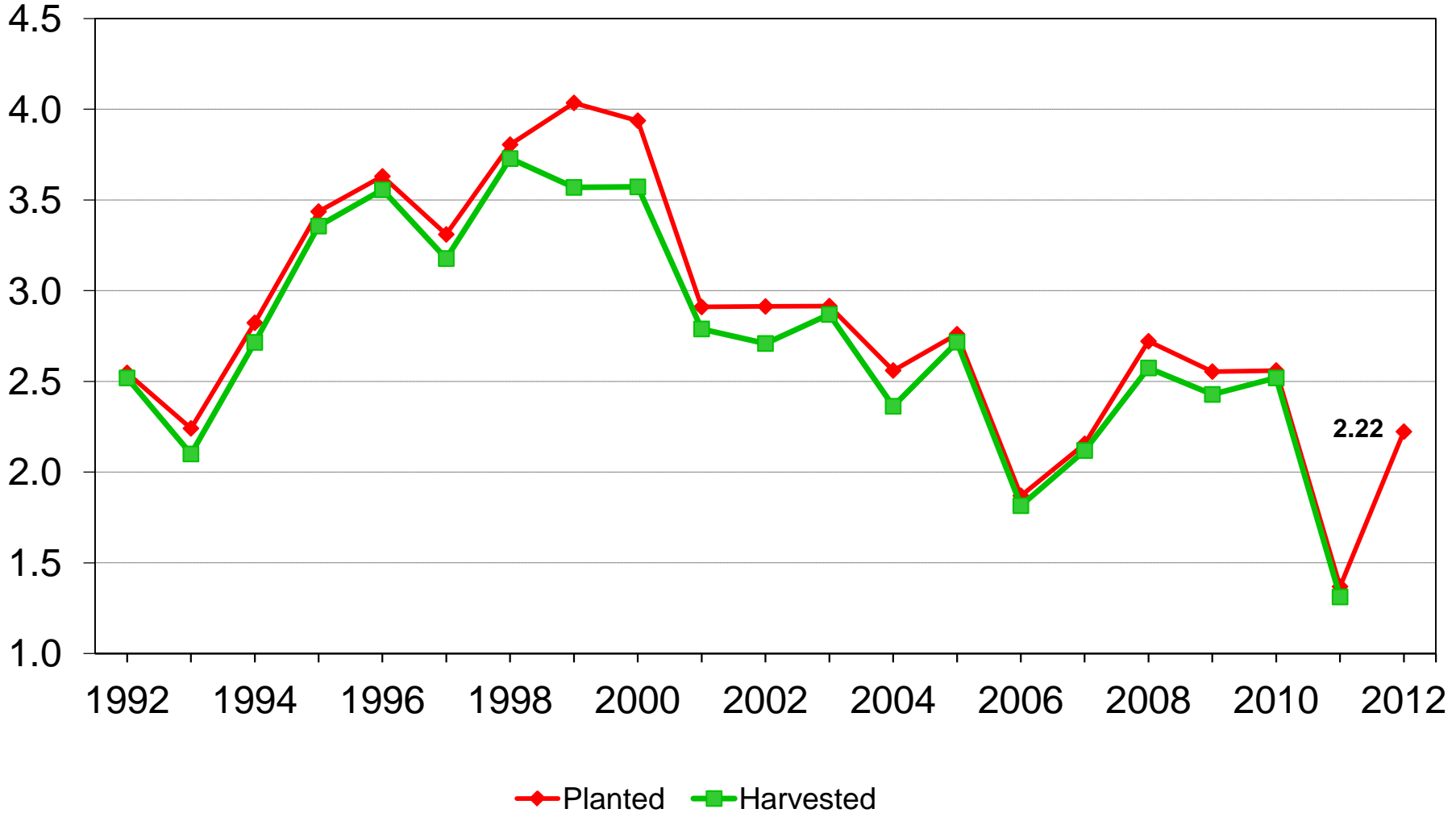




U.S. Durum Wheat Acres



Million acres





March 2012 Prospective Plantings

Feed Grains	2012 Intentions	2011 Planted	% Change
	<i>--Million Acres--</i>		
Corn	95.9	91.9	+ 4.3
Sorghum	5.95	5.48	+ 8.6
Oats	2.86	2.50	+ 14.7
Barley	3.33	2.56	+ 30.2



March 2012 Prospective Plantings

Food Grains	2012 Intentions	2011 Planted	% Change
	<i>--Million Acres--</i>		
All Wheat	55.9	54.4	+ 2.8
Winter Wheat	41.7	40.6	+ 2.6
Durum Wheat	2.22	1.37	+ 62.4
Other Spring Wheat	12.0	12.4	- 3.4
Rice	2.56	2.69	- 4.8



March 2012 Prospective Plantings

Oilseeds	2012 Intentions	2011 Planted	% Change
		<i>--Million Acres--</i>	
Soybeans	73.9	75.0	- 1.4
Peanuts	1.42	1.14	+ 24.6
Sunflower	1.81	1.54	+ 17.2
Canola	1.56	1.07	+ 45.3
Flaxseed	0.289	0.178	+ 62.4
All Cotton	13.2	14.7	- 10.7
Upland Cotton	12.9	14.4	- 10.7
American Pima	0.270	0.306	- 11.9



March 2012 Prospective Plantings

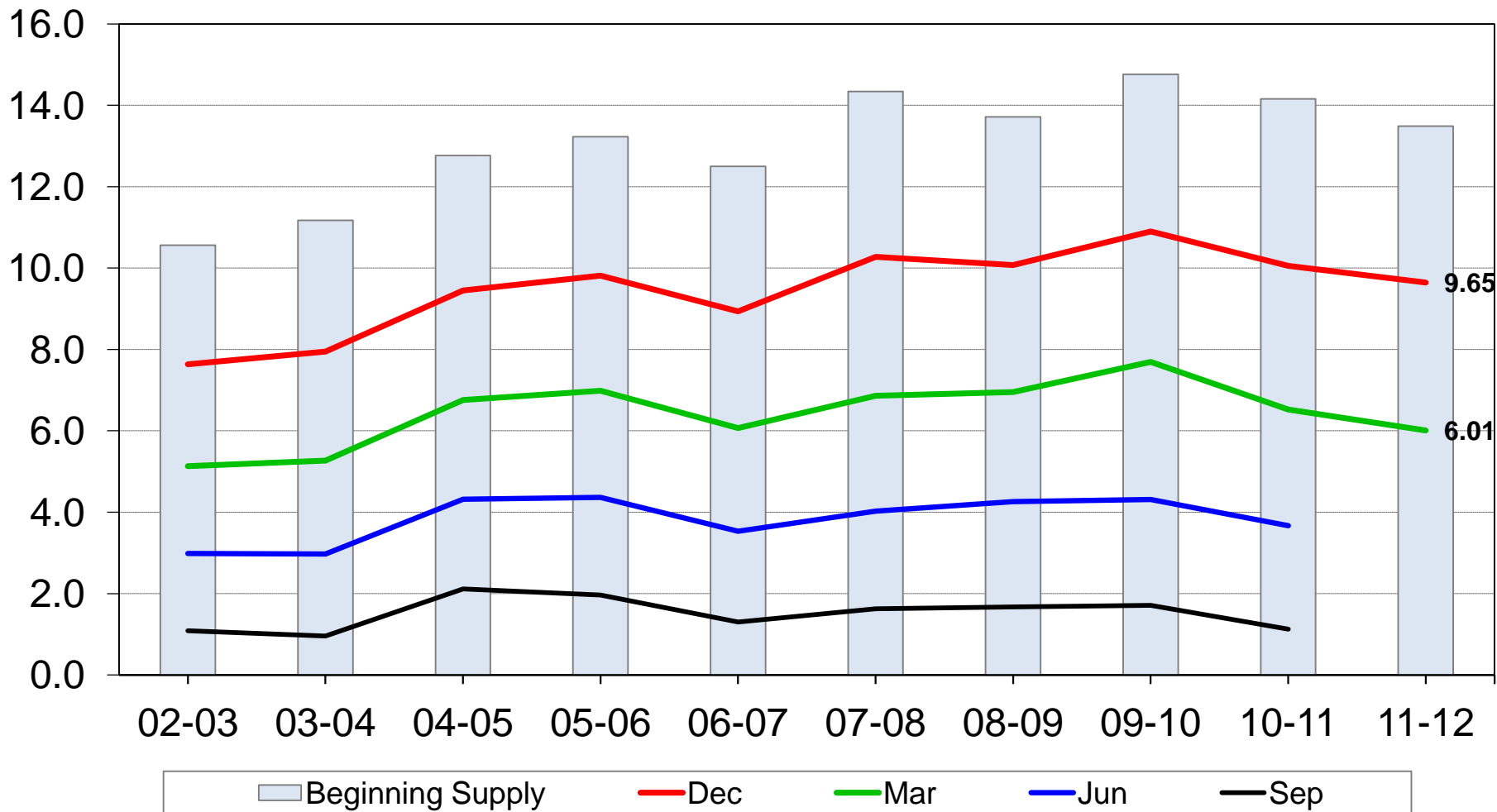
Other Crops	2012 Intentions	2011 Planted	% Change
	<i>--Million Acres--</i>		
All Hay (Harvested)	57.3	55.6	+ 3.1
Sugarbeets	1.24	1.23	+ 0.7
Tobacco (Harvested)	0.318	0.325	- 2.1
Sweet Potatoes	0.133	0.134	- 0.6
Dry Edible Beans	1.67	1.21	+ 38.0
Dry Edible Peas	0.619	0.362	+ 71.0
Austrian Winter Peas	0.021	0.018	+ 16.7
Lentils	0.518	0.428	+ 21.0



U.S. Corn Stocks



Billion bushels

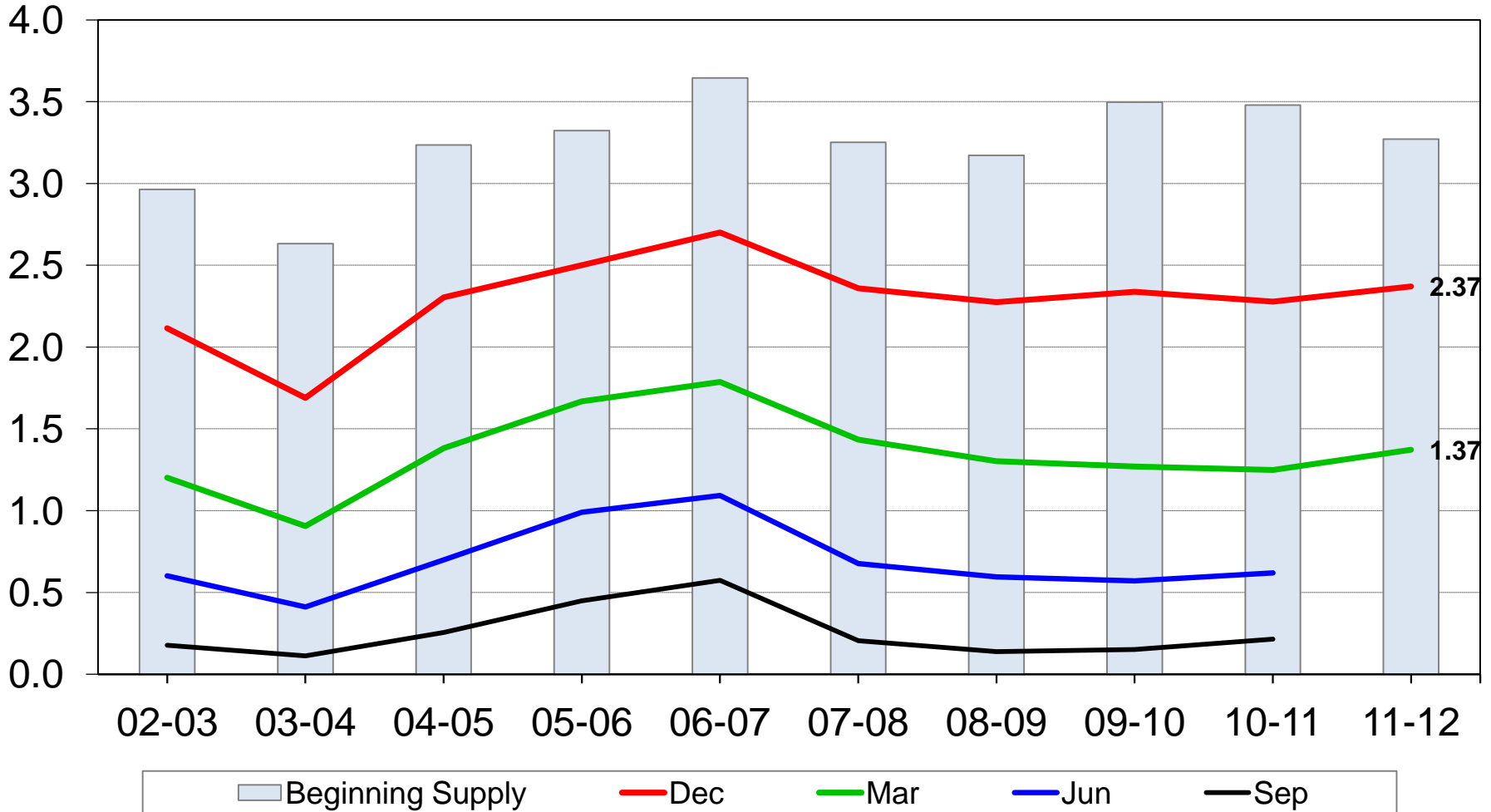




U.S. Soybean Stocks



Billion bushels

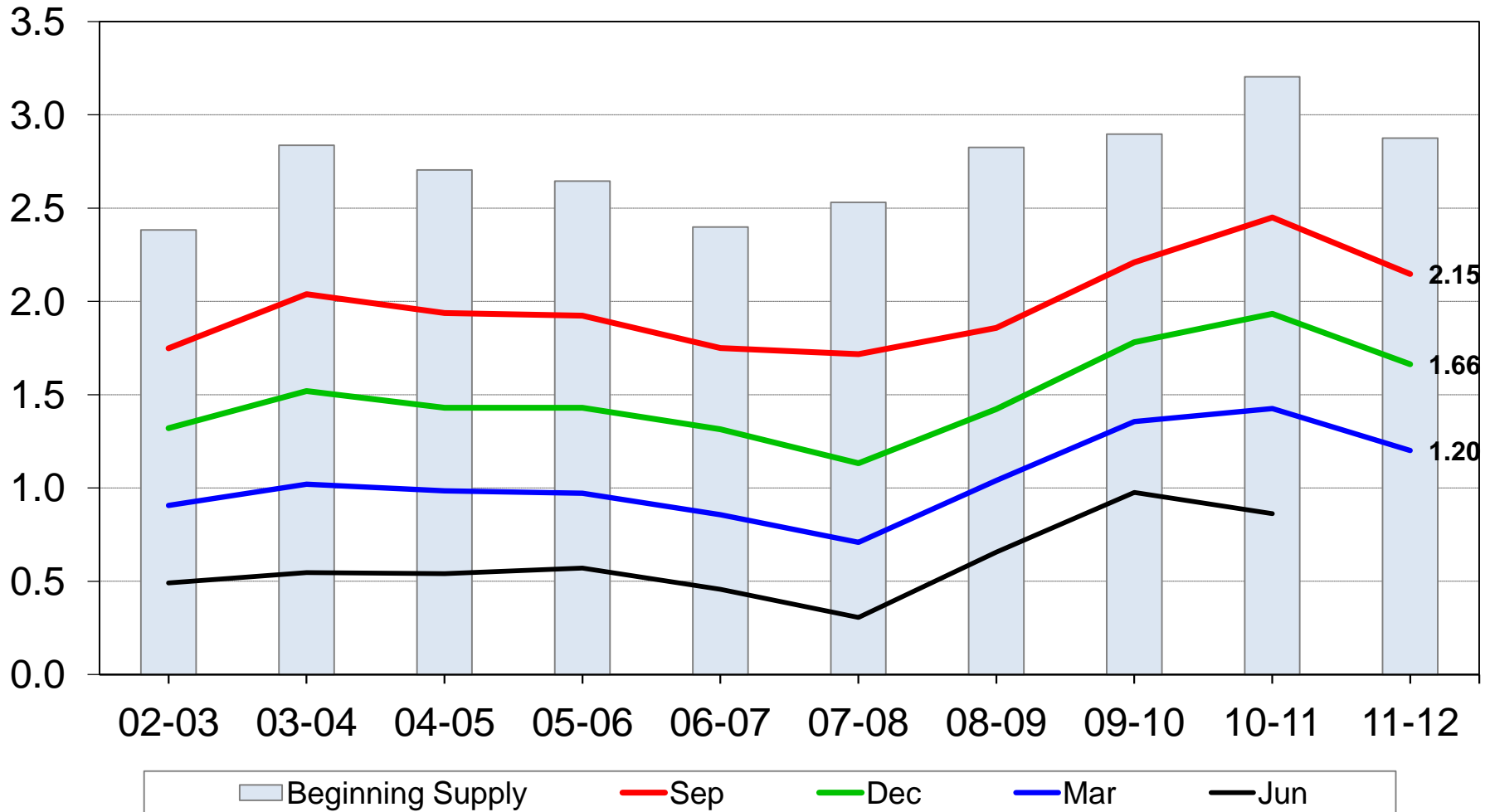




U.S. All Wheat Stocks



Billion bushels

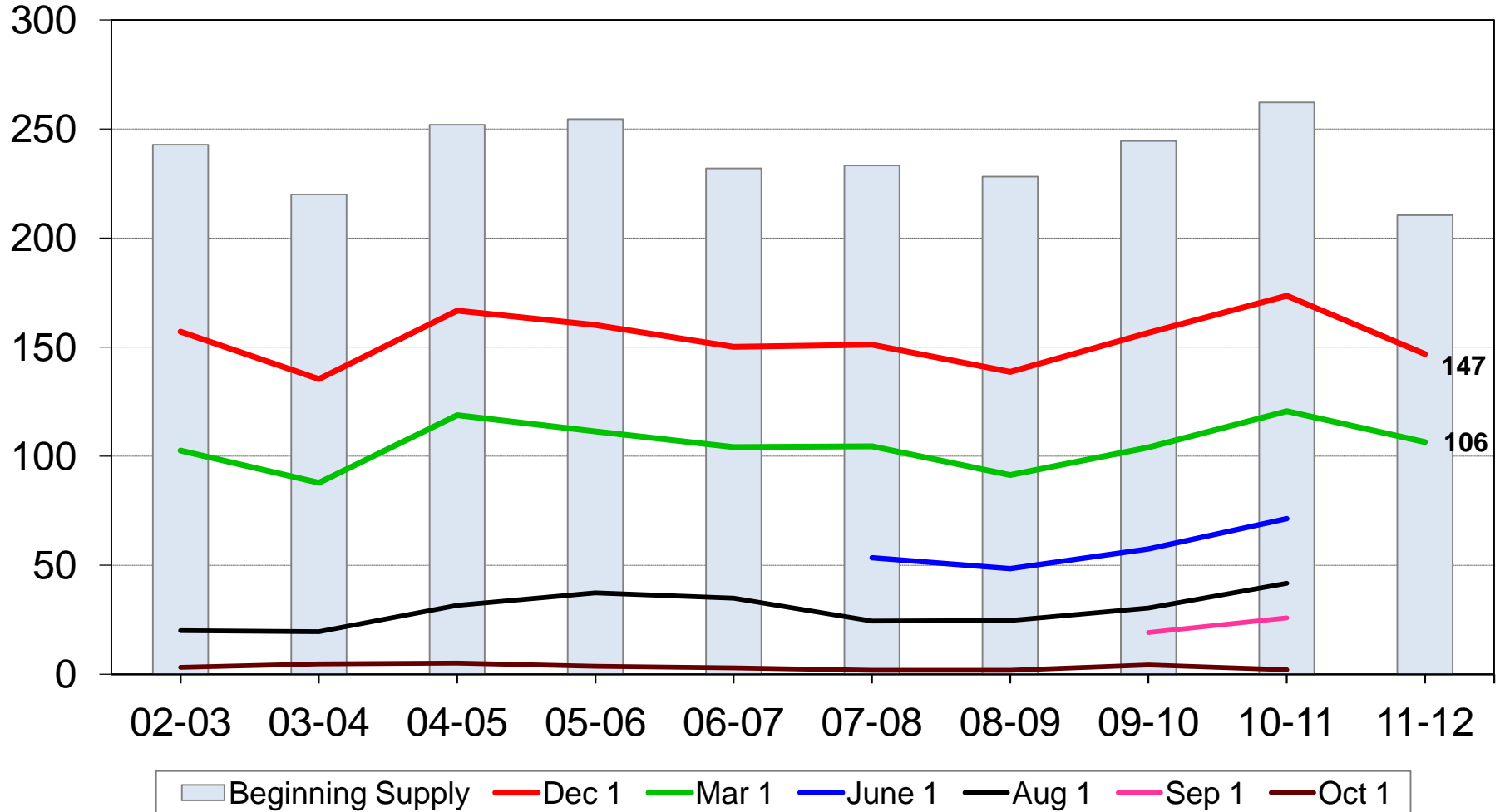




U.S. Rough Rice Stocks



Million cwt





United States Department of Agriculture
National Agricultural Statistics Service



Upcoming Reports

March 30	Hogs and Pigs
April 10	Crop Production
April 20	Cattle on Feed
April 30	Agricultural Prices



United States Department of Agriculture
National Agricultural Statistics Service



All Reports Available At

www.nass.usda.gov

For Questions

202-720-2127

800-727-9540

nass@nass.usda.gov