

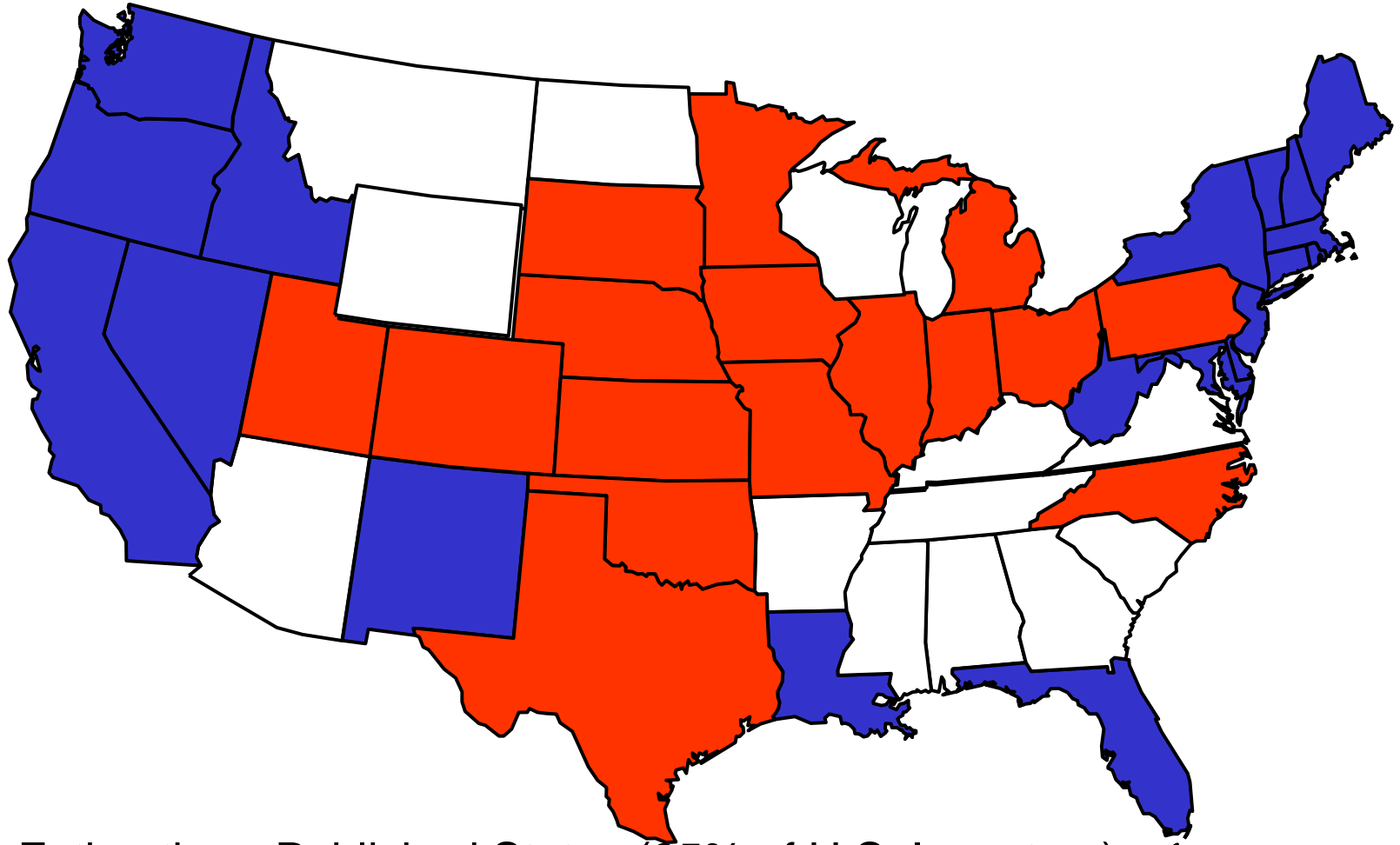


National Agricultural Statistics Service

FACT FINDERS FOR AGRICULTURE

UNITED STATES DEPARTMENT OF AGRICULTURE

Quarterly Hogs and Pigs Estimating Program



 Estimating - Published States (95% of U.S. Inventory)

 Estimating - Non-Published States

 Non-Estimating States

62.1 Million Head on
June 1, 2014

All States Publish in December



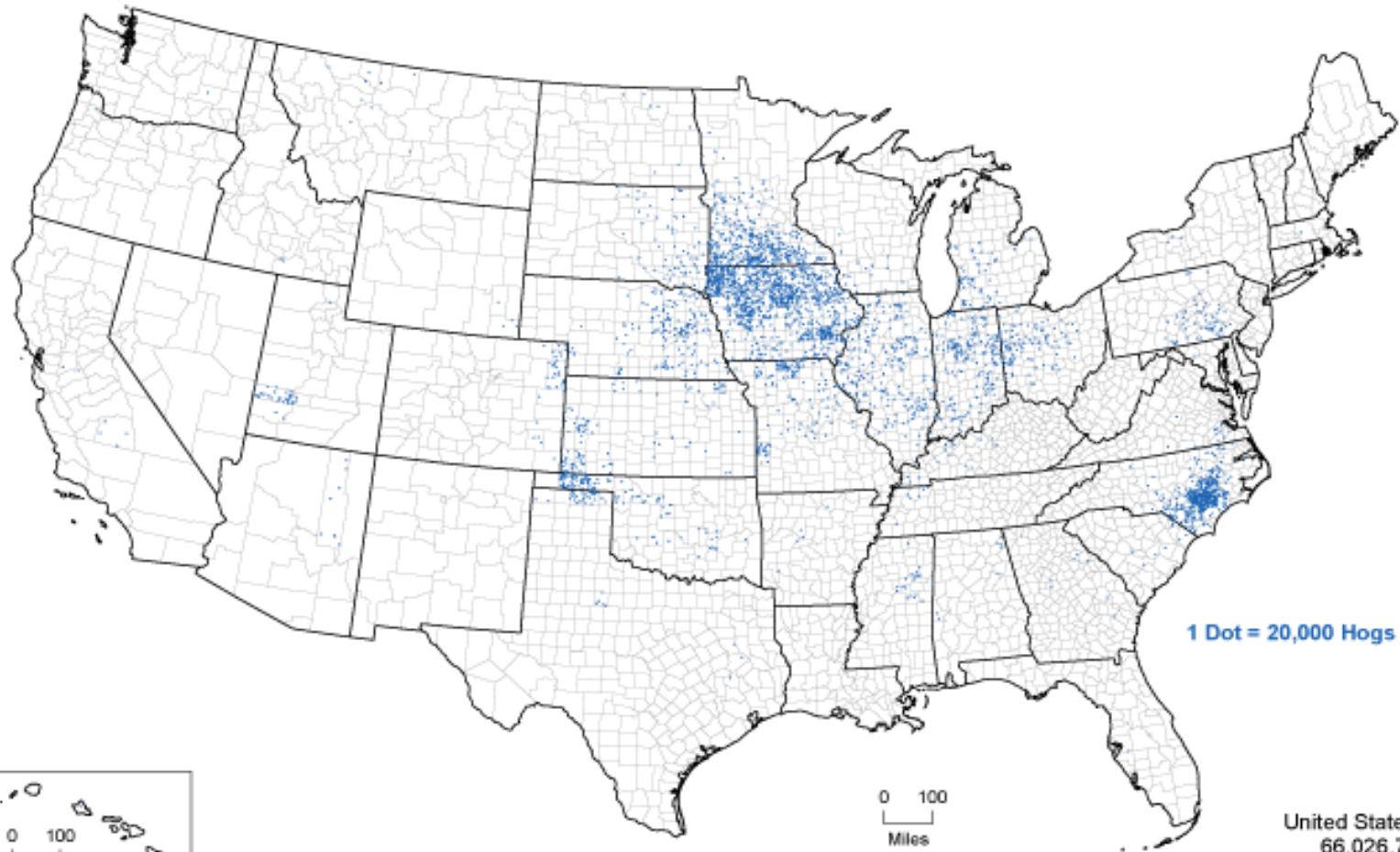
What's Available for Hogs & Pigs

- Inventory
- Breeding Herd
- Market Hogs
- Sows Farrowing
- Pig Crop
- Pigs per Litter
- Pigs per Litter by Size of Operation
- Joint Release with Statistics Canada

0 200
Miles



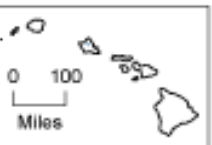
Hogs and Pigs - Inventory: 2012



1 Dot = 20,000 Hogs and Pigs

United States Total
66,026,785

0 100
Miles



12-M148
U.S. Department of Agriculture, National Agricultural Statistics Service

2012 Census of Agriculture



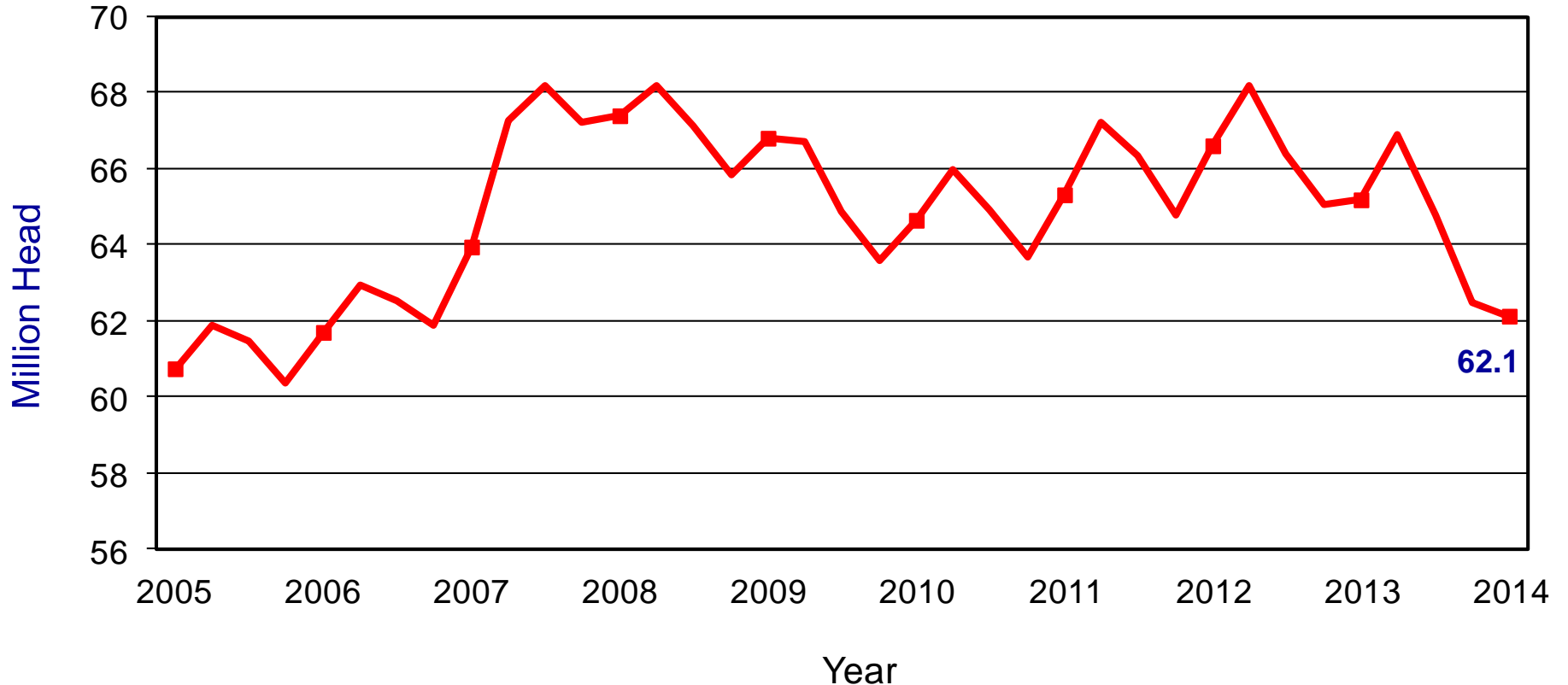
U.S. Hogs & Pigs Inventory

June 1, 2014

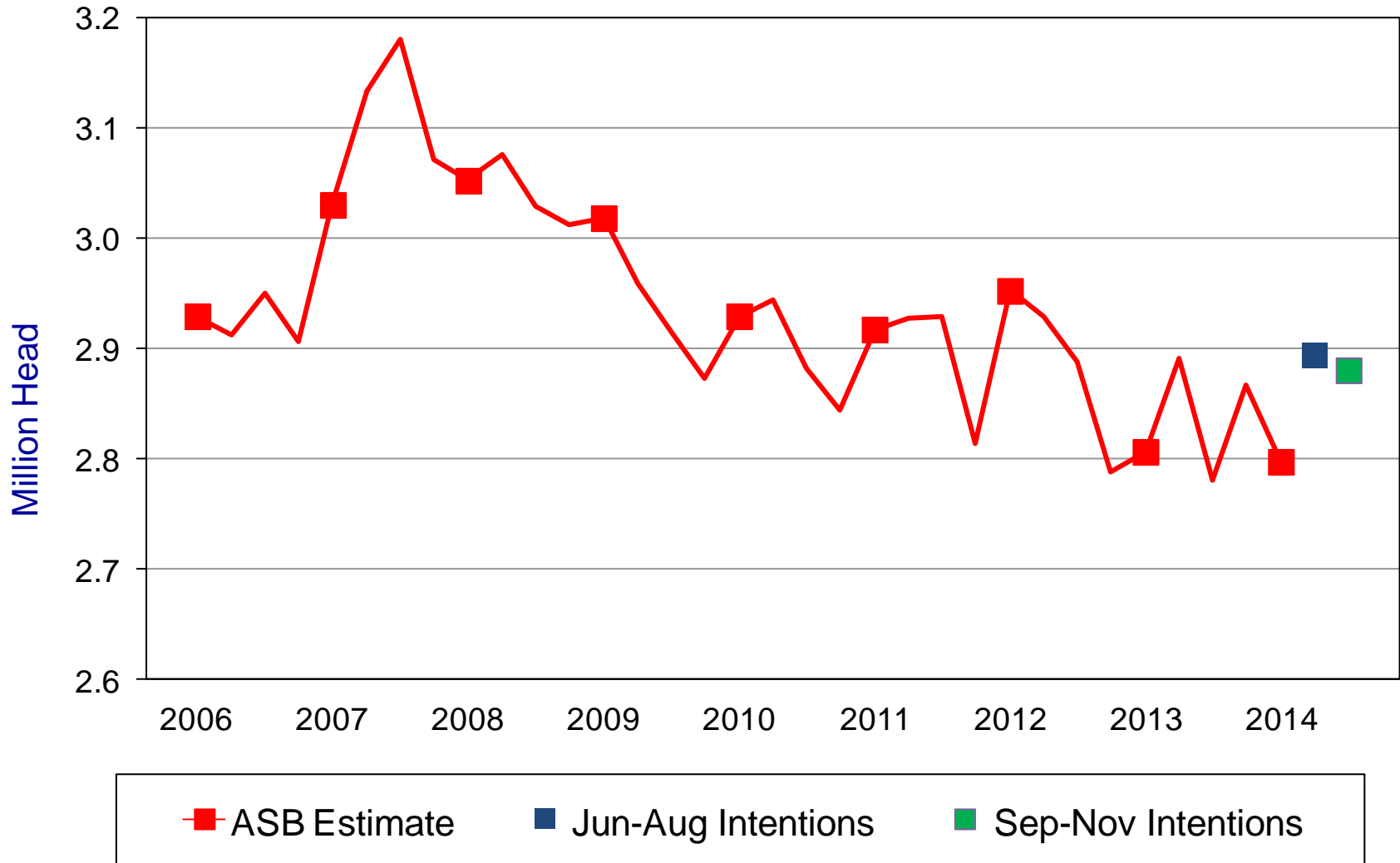


Inventory Items	(000) Hd	% PY
All Hogs & Pigs	62,128	95%
Breeding Hogs	5,855	100%
Market Hogs	56,273	95%
Mar – May Pig Crop	27,361	95%
Sows Farrowing	2,797	100%
Litter Rate	Number	% PY
Mar – May 2014	9.78	95%
Farrowing Intentions	(000) Hd	% PY
Jun – Aug 2014	2,893	100%
Sep – Nov 2014	2,880	104%

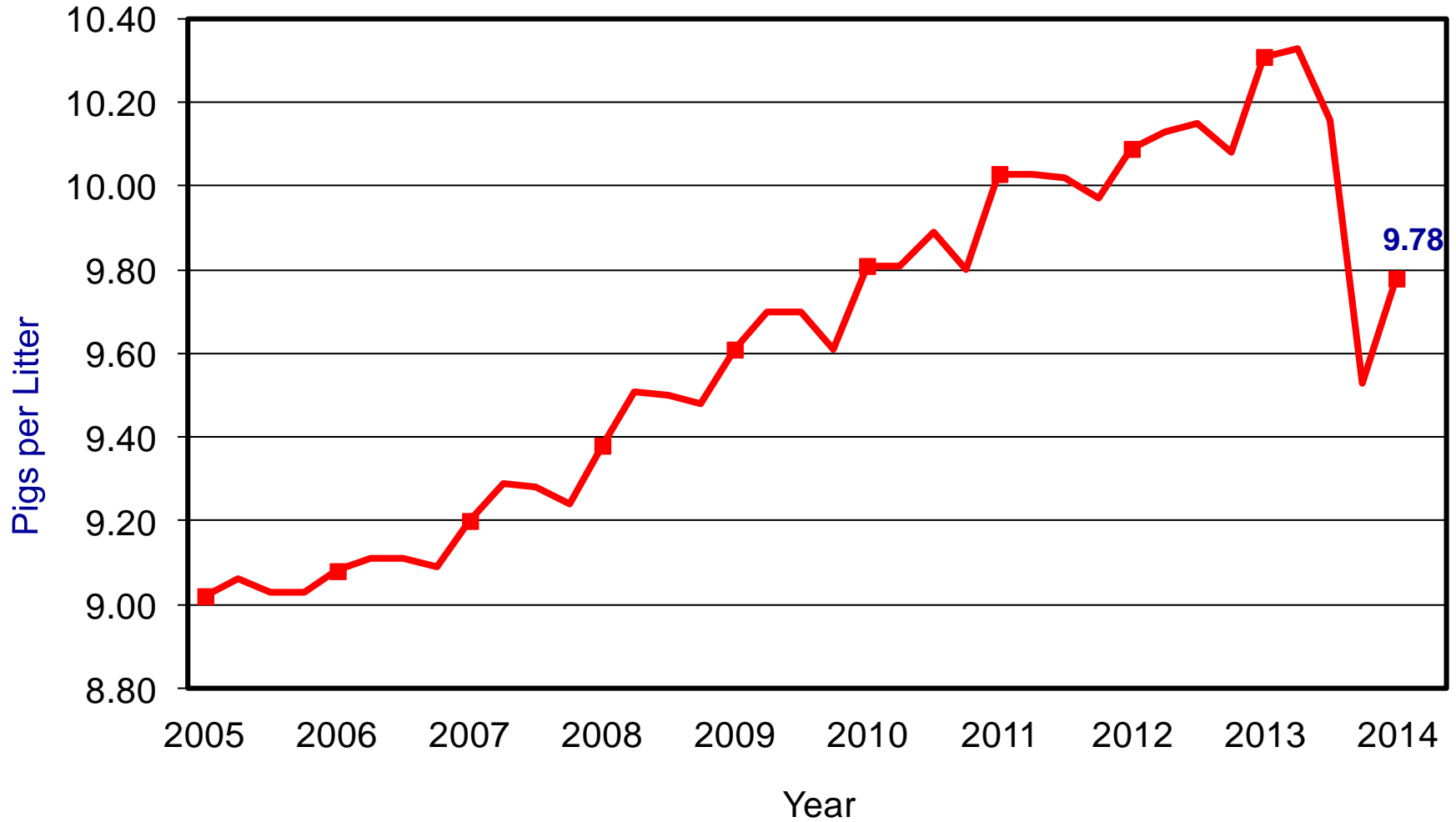
U.S. Quarterly Hogs and Pigs Inventory June 1, 2014



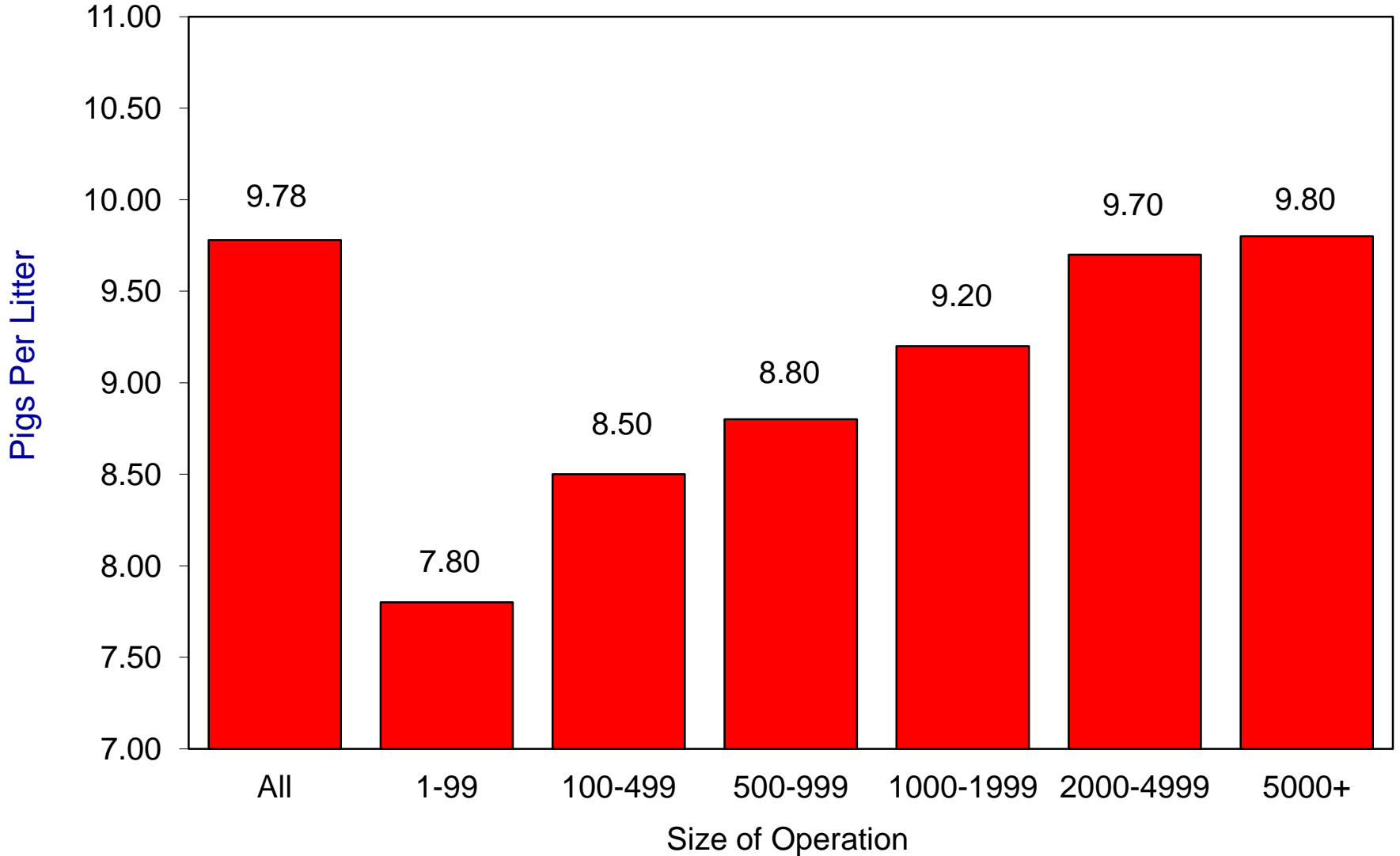
U.S. Quarterly Sows Farrowed March - May



U.S. Quarterly Pigs per Litter March - May



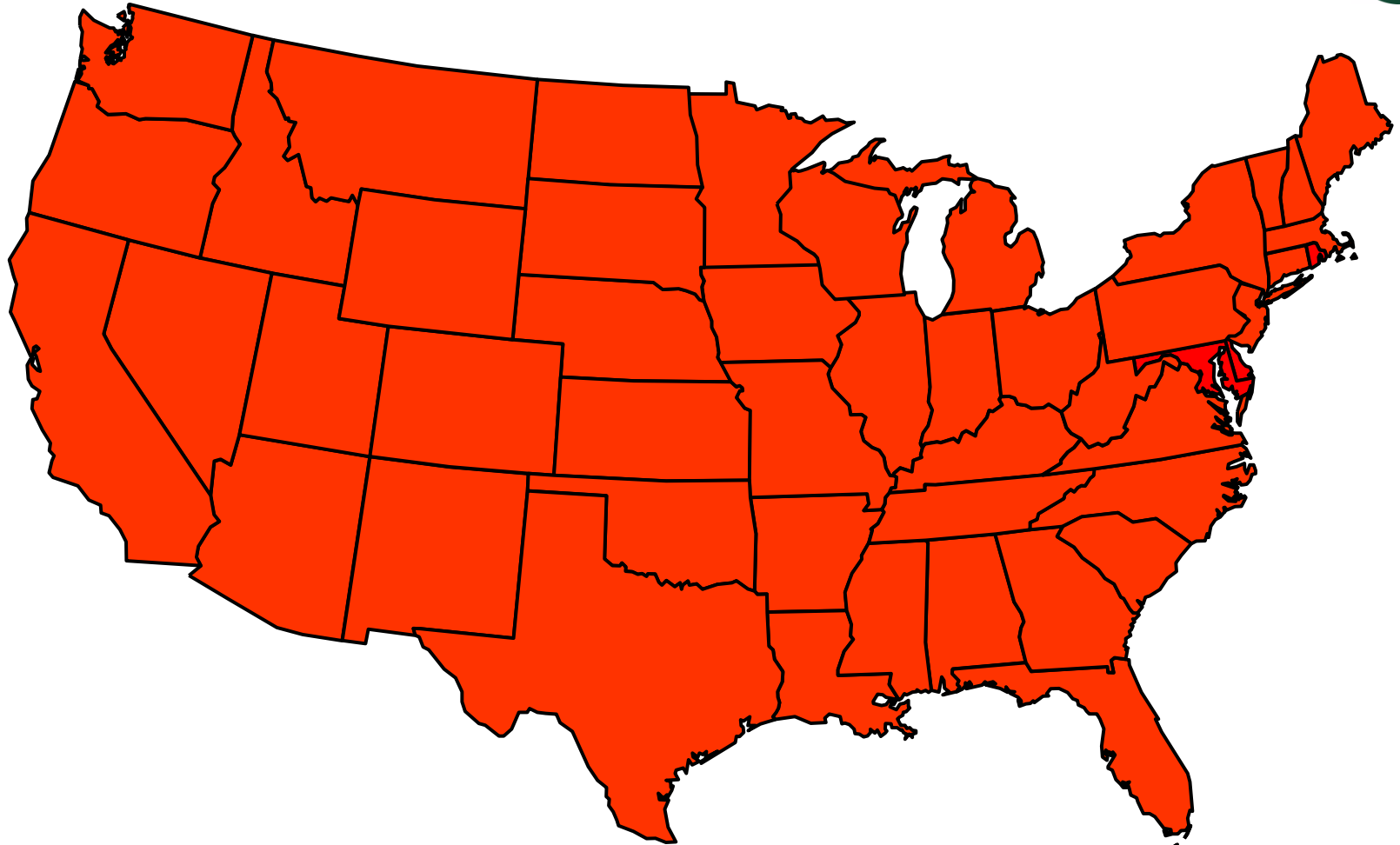
U.S. Pigs per Litter by Size of Operation March-May 2014





Cattle and Calves Estimating Program

- Inventory and calf crop estimates published for the U.S. twice a year, in January and July
 - January: estimates are published for all 50 States and the U.S.
 - July: U.S. estimate only published
- Estimates based on data from Cattle surveys conducted each Jan and July
 - Sample Sizes
 - January – 40,000 July – 10,000



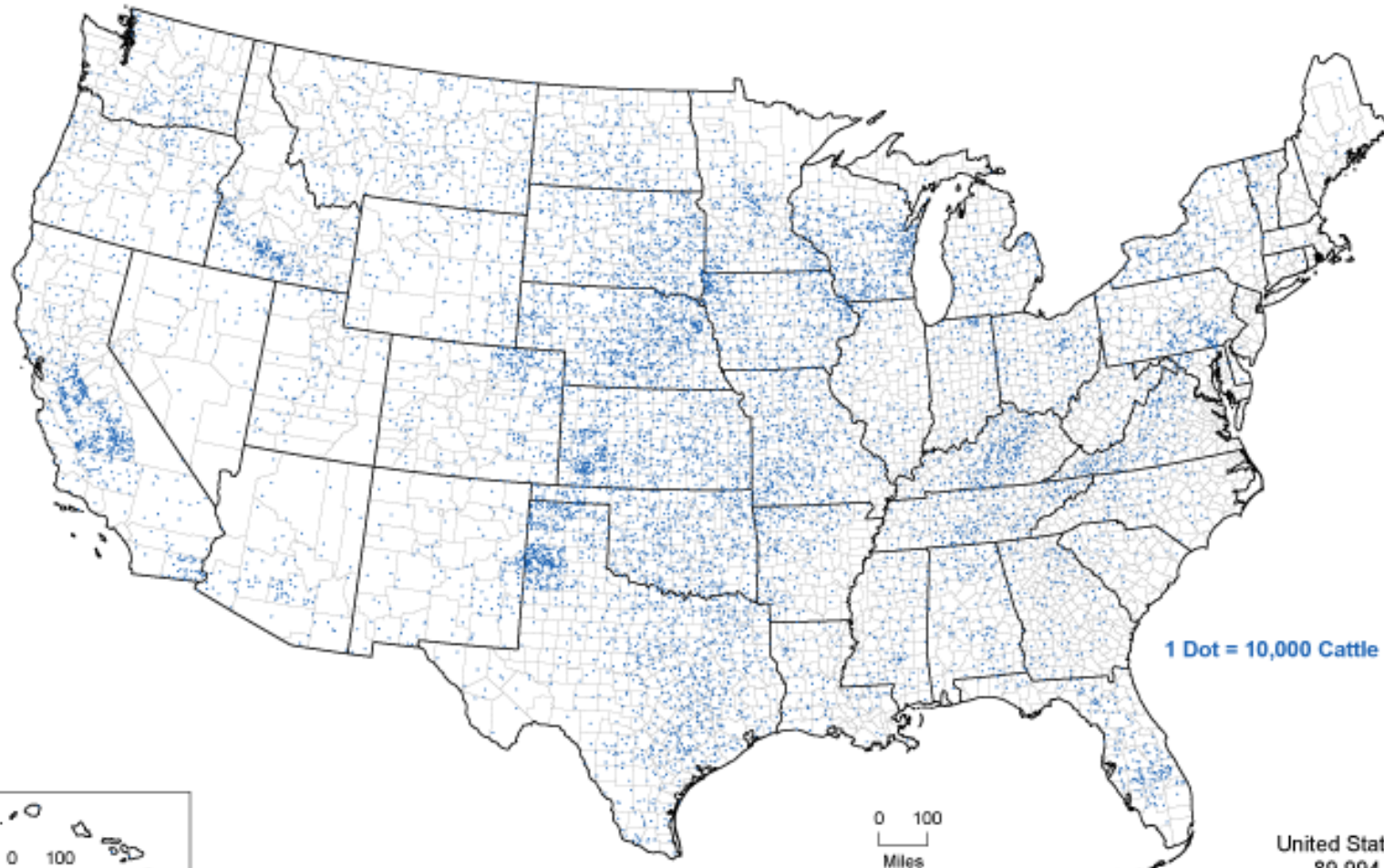
Estimating States
(All States)

87.7 Million Head on
January 1, 2014

0 200
Miles



Cattle and Calves - Inventory: 2012



1 Dot = 10,000 Cattle and Calves

United States Total
89,994,614

0 100
Miles



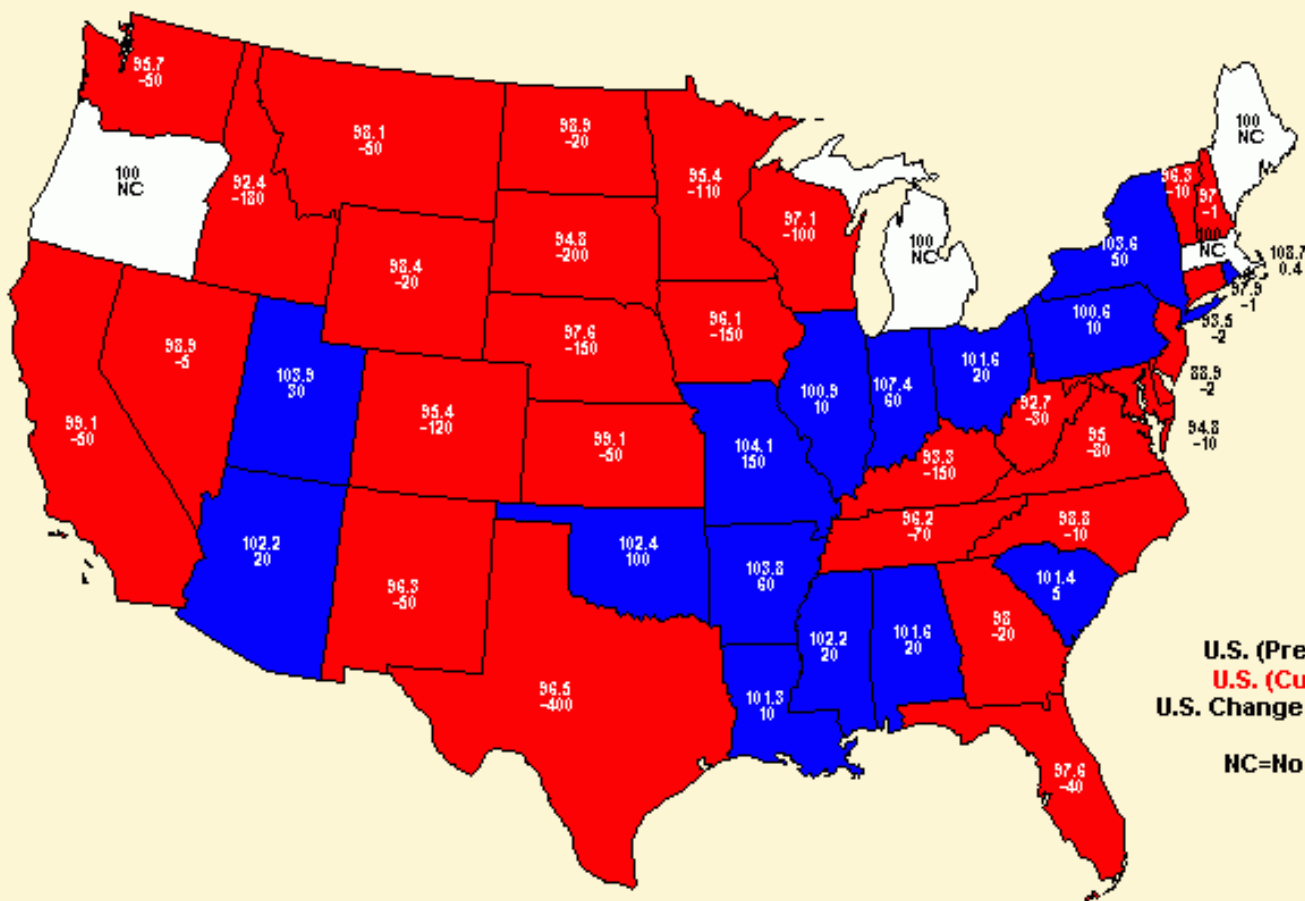
12-M133
U.S. Department of Agriculture, National Agricultural Statistics Service

0 100
Miles

2012 Census of Agriculture

January 2014 Cattle Inventory - Percent of PY & Change

All Cattle and Calves



U.S. (Prev) 89299.6
U.S. (Curr) 87730
U.S. Change 98.20

NC=No Change

USDA_NASS
 1/28/14
 2:20 PM



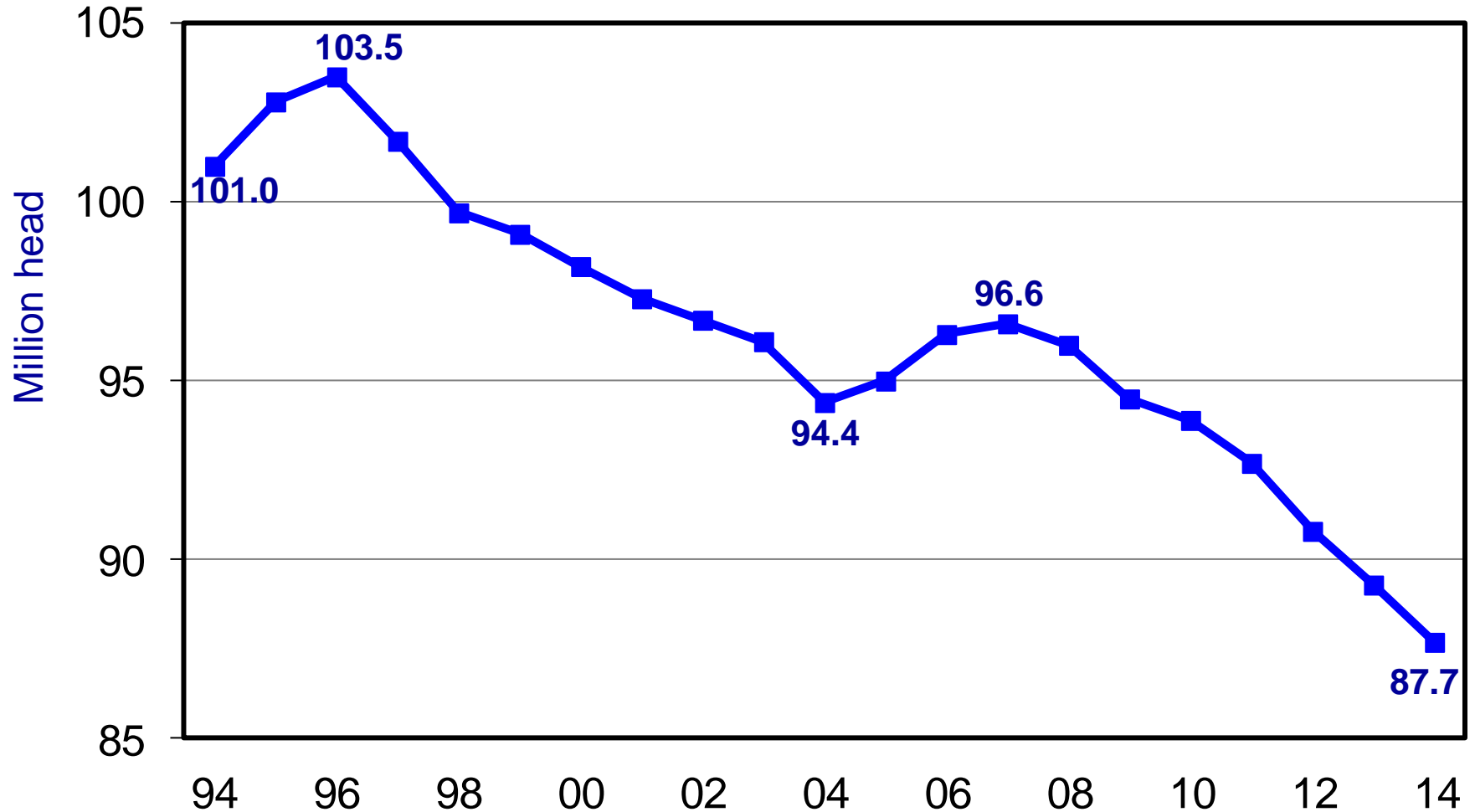
U.S. Cattle Inventory January 1



Items	2013	2014	% PY
	1,000 head		
All Cattle & Calves	89,299.6	87,730.0	98%
Cows & Heifers that have Calved	38,515.2	38,251.0	99%
Beef Cows	29,297.3	29,042.4	99%
Milk Cows	9,217.9	9,208.6	100%
All Heifers 500 lbs & over	19,133.9	18,751.4	98%
For Beef Replacements	5,380.6	5,470.8	102%
Beef Repl. Expected to Calve	3,280.3	3,319.1	101%
For Milk Replacements	4,550.7	4,539.2	100%
Milk Repl. Expected to Calve	2,928.4	2,980.7	102%
Other Heifers	9,202.6	8,741.4	95%
Steers 500 lbs & over	15,812.7	15,414.9	97%
Bulls 500 lb & over	2,055.8	2,034.8	99%
Calves under 500 lbs	13,782.0	13,277.9	96%
Cattle on Feed	13,363.7	12,695.3	95%
Previous Year Calf Crop	34,279.0	33,930.0	99%

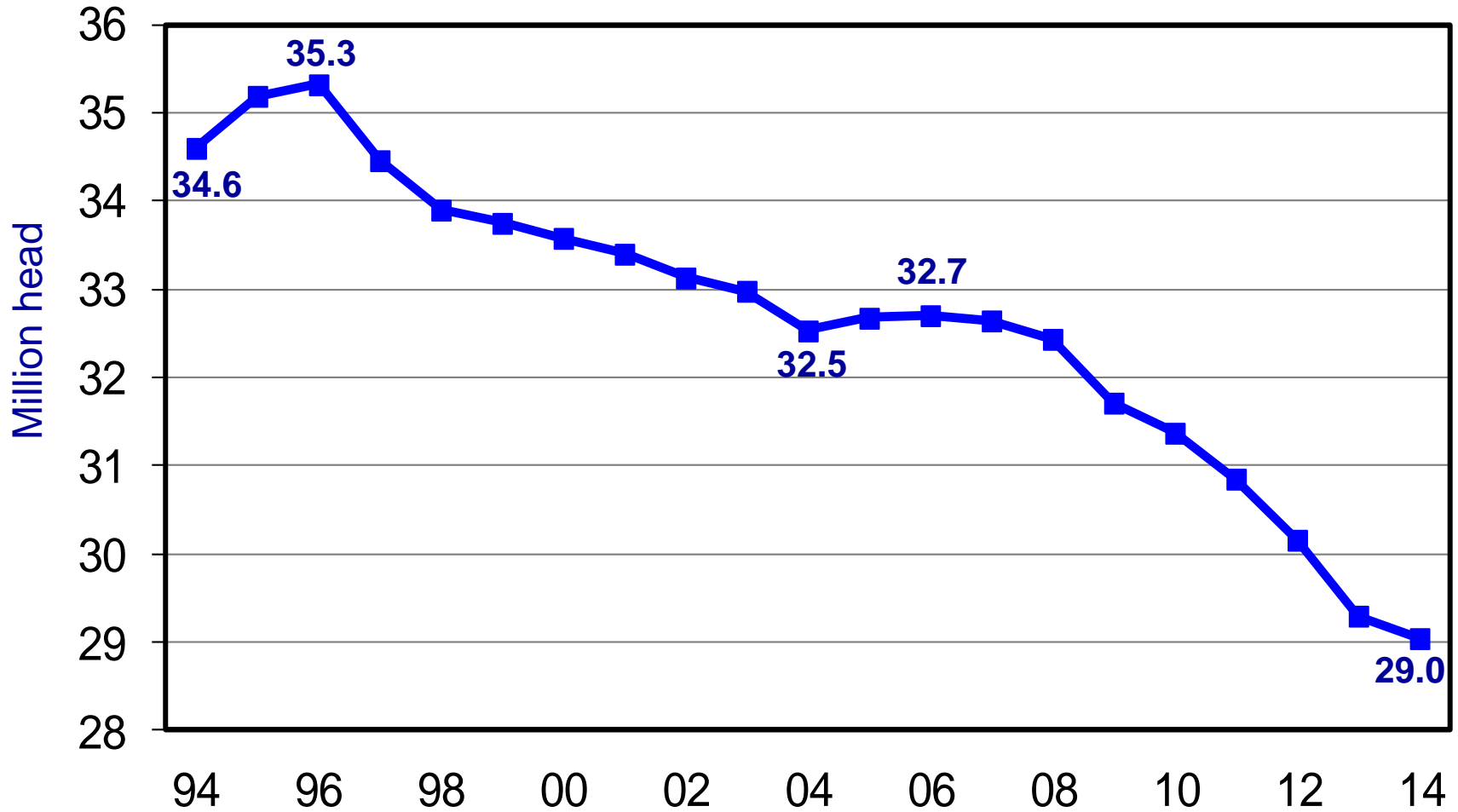
U.S. All Cattle & Calves

January 1, 1994 - 2014

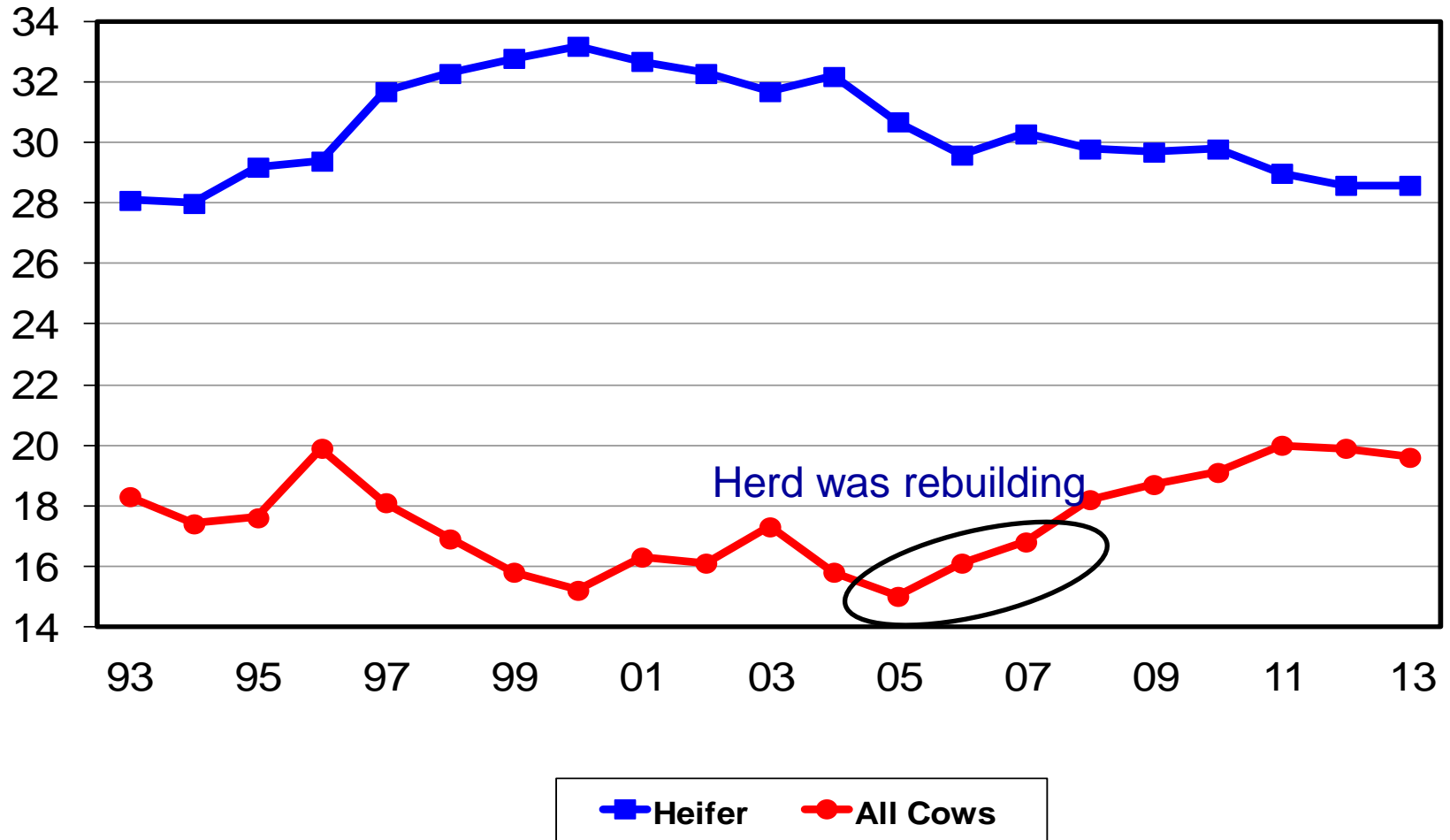


U.S. Beef Cows

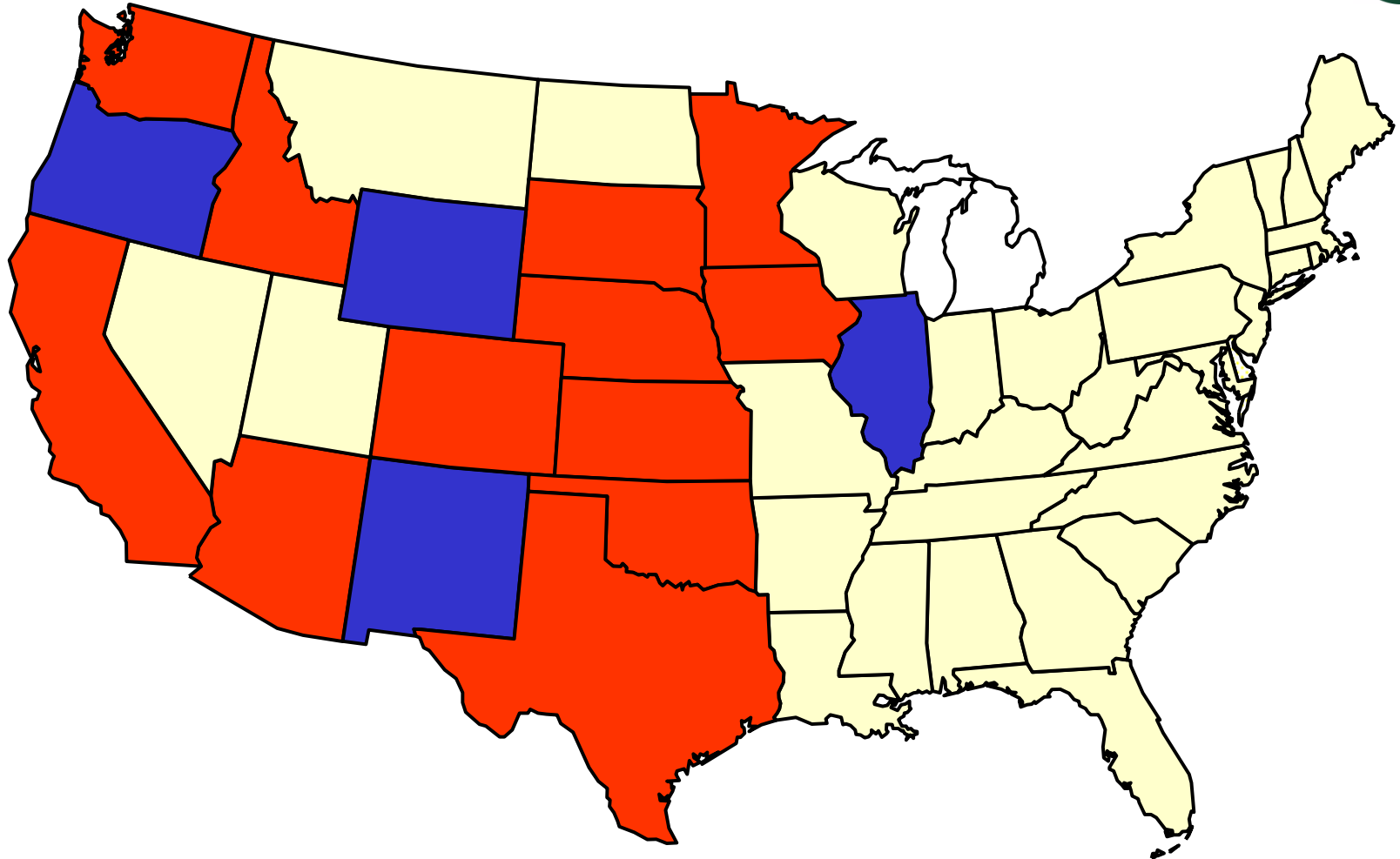
January 1, 1994 - 2014






All Cow & Heifer Slaughter as a Percent of Total Slaughter



Cattle on Feed Estimating Program



-  Monthly Survey/Monthly Estimates Published
-  Monthly Survey/Annual Estimates Published
-  Annual Survey/Annual Estimates Published

12.7 Million Head on
January 1, 2014

Contact Information

- USDA - National Agricultural Statistics Service
- 202-720-3570