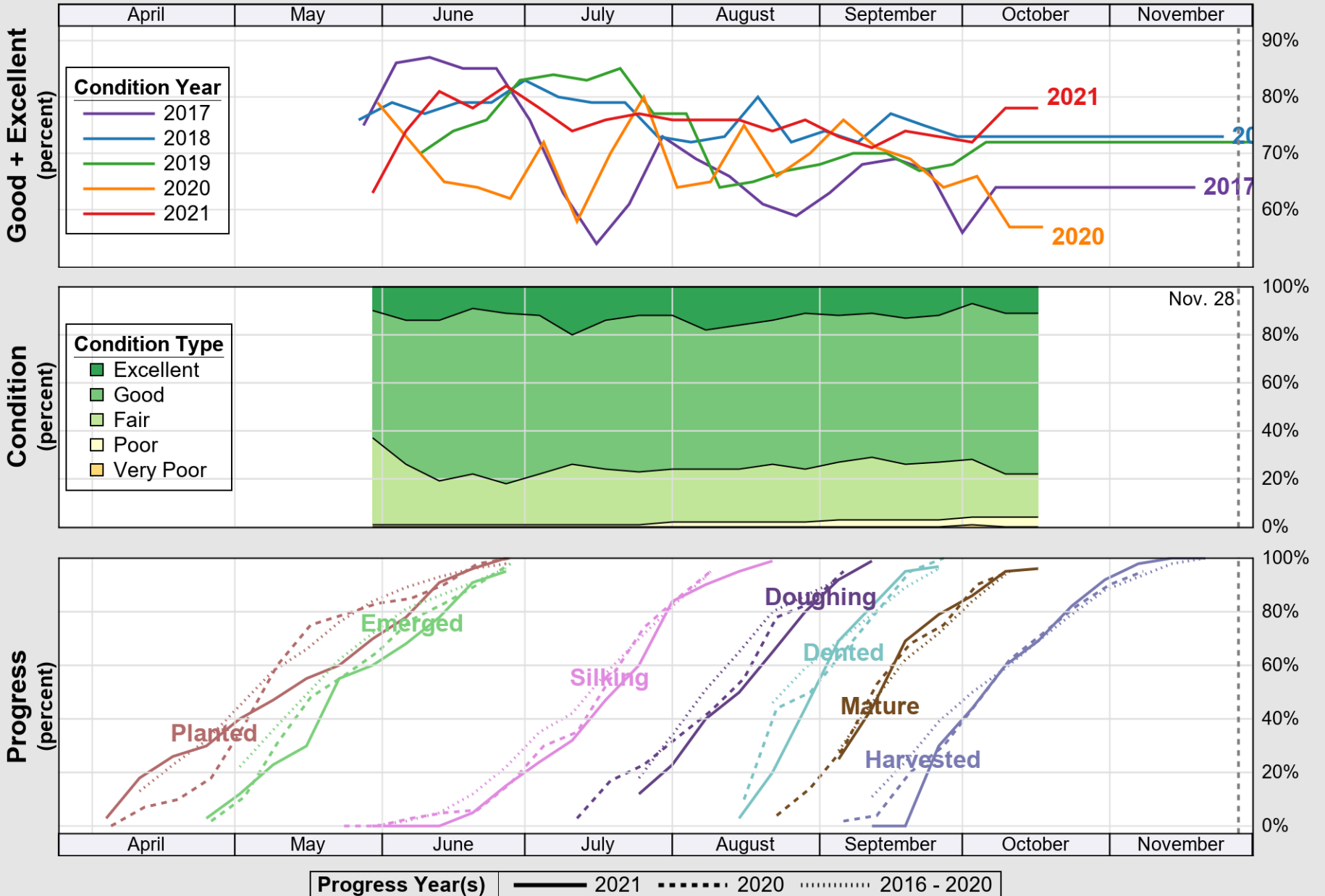


USDA

# Crop Progress and Condition: Corn in Oklahoma , 2021

NASS

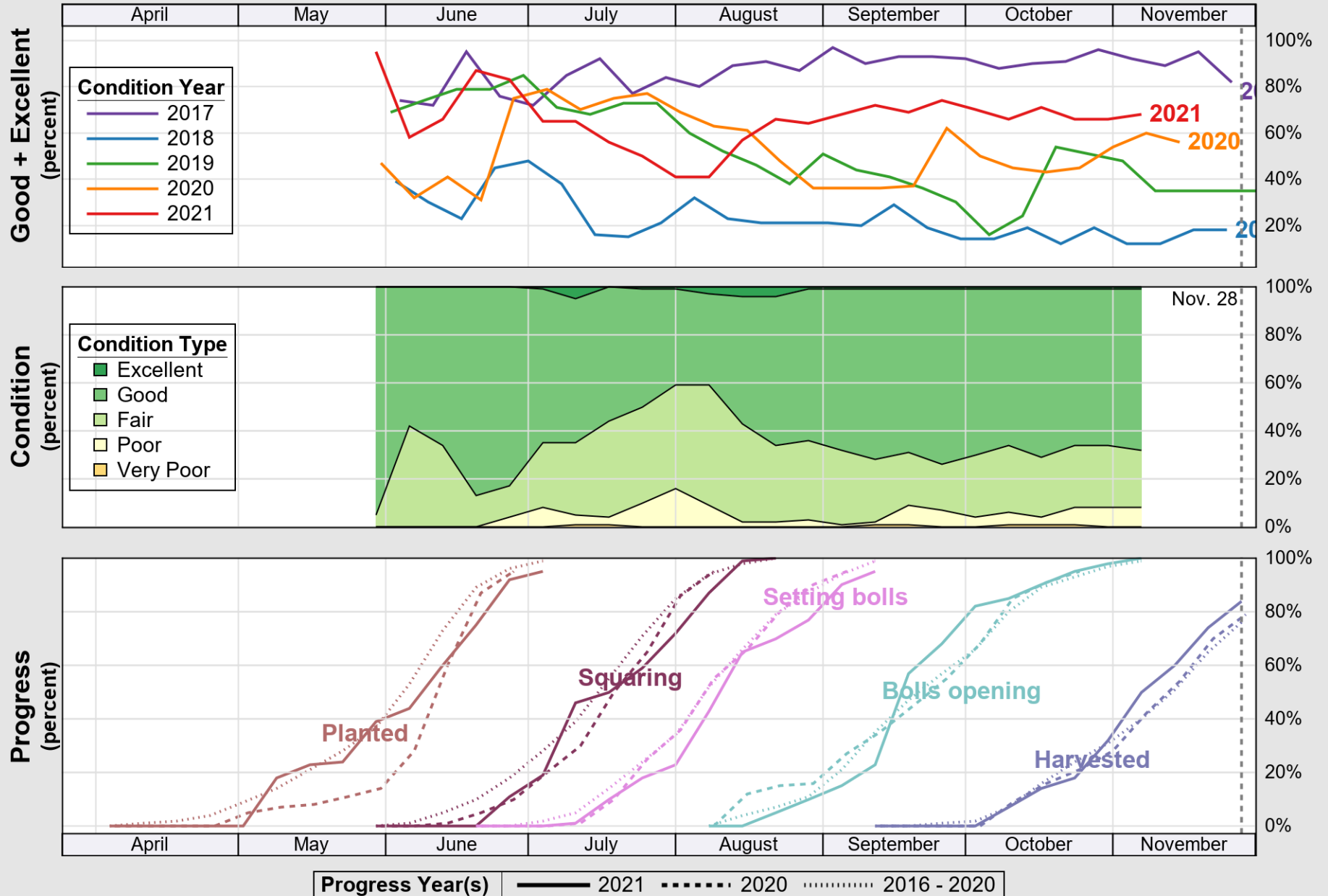


Source: National Agricultural Statistics Service (NASS), Crop Progress Report

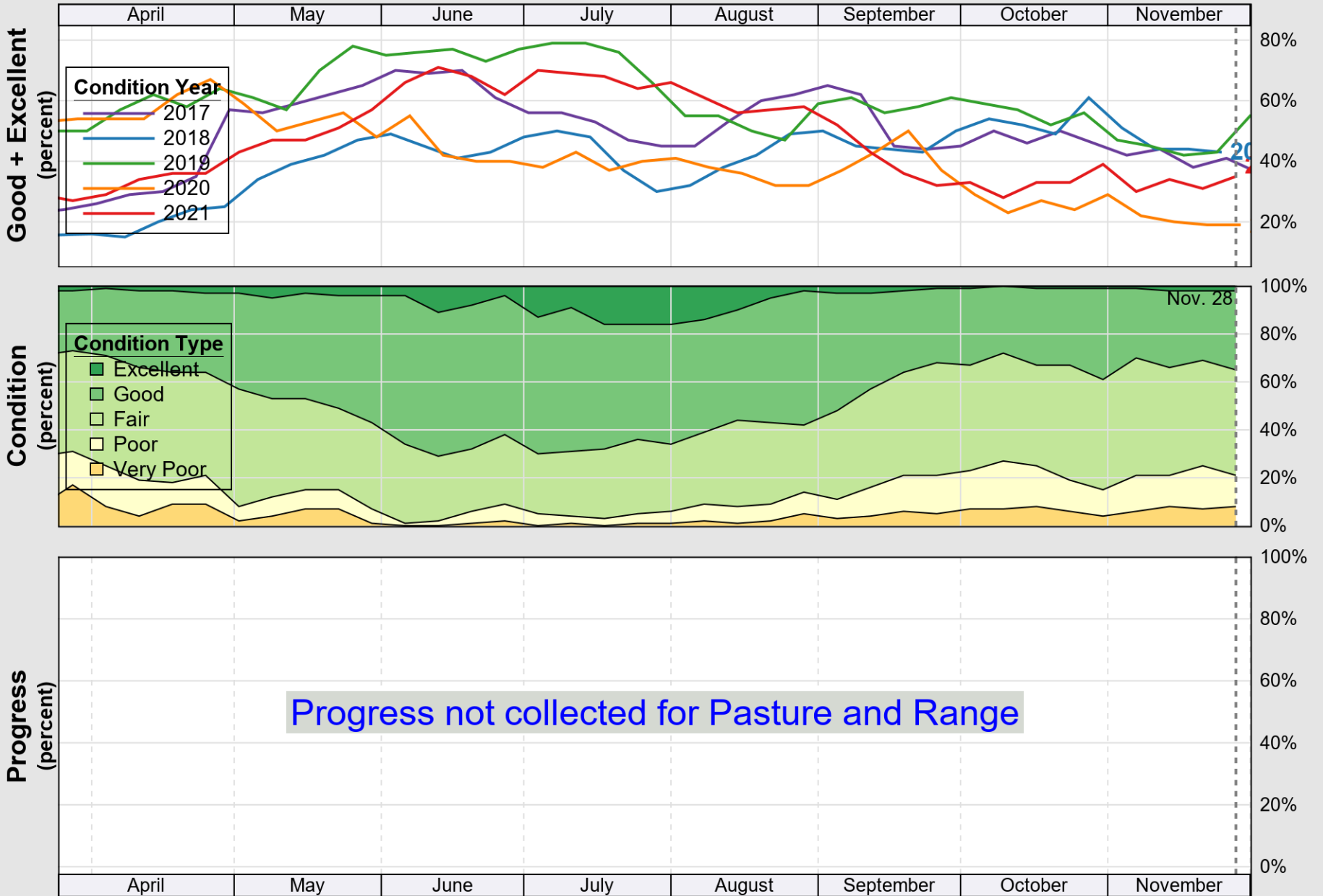
USDA

# Crop Progress and Condition: Cotton in Oklahoma , 2021

NASS



Source: National Agricultural Statistics Service (NASS), Crop Progress Report

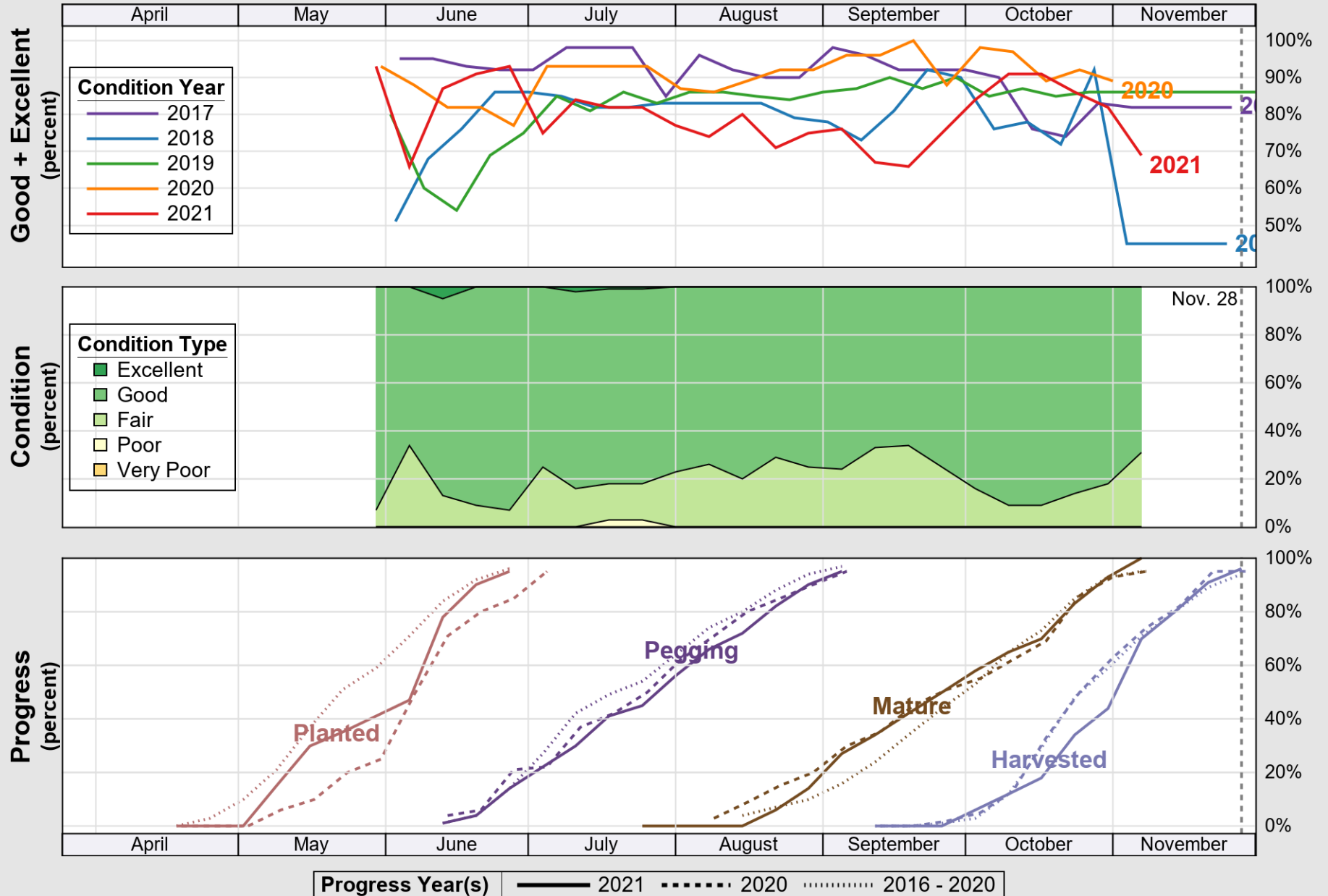


Source: National Agricultural Statistics Service (NASS), Crop Progress Report

USDA

# Crop Progress and Condition: Peanuts in Oklahoma , 2021

NASS

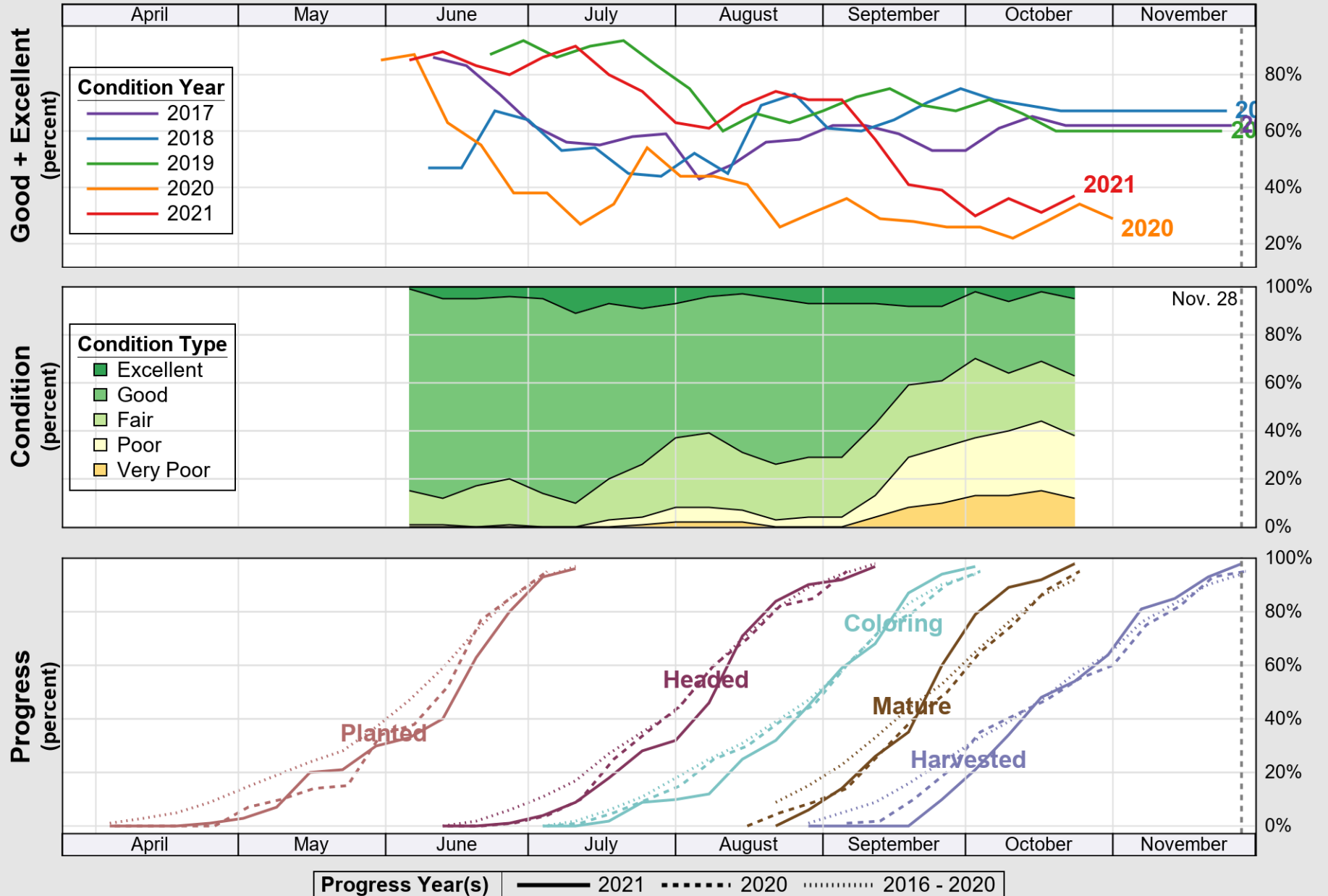


Source: National Agricultural Statistics Service (NASS), Crop Progress Report

USDA

# Crop Progress and Condition: Sorghum in Oklahoma , 2021

NASS

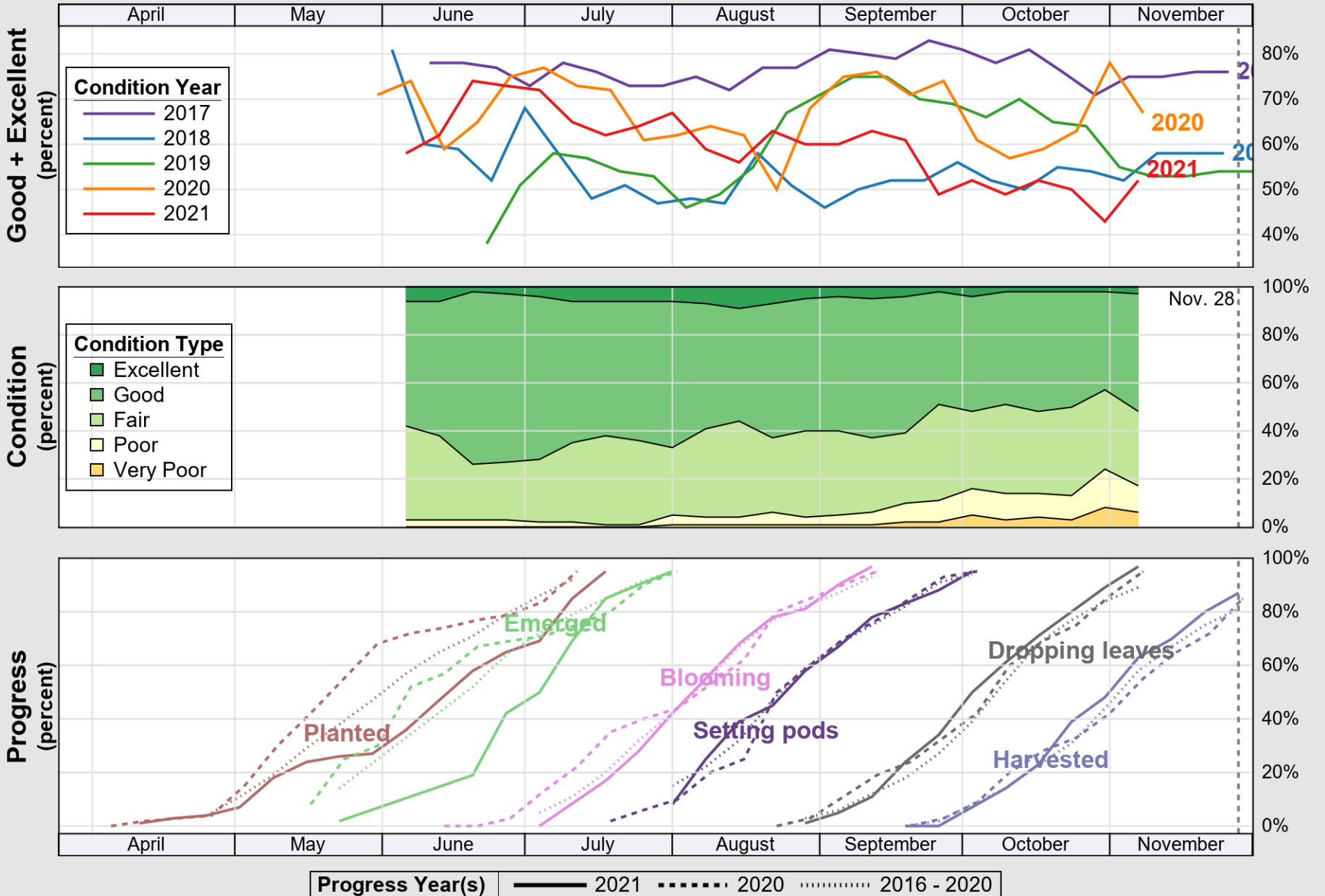


Source: National Agricultural Statistics Service (NASS), Crop Progress Report

USDA

# Crop Progress and Condition: Soybeans in Oklahoma , 2021

NASS

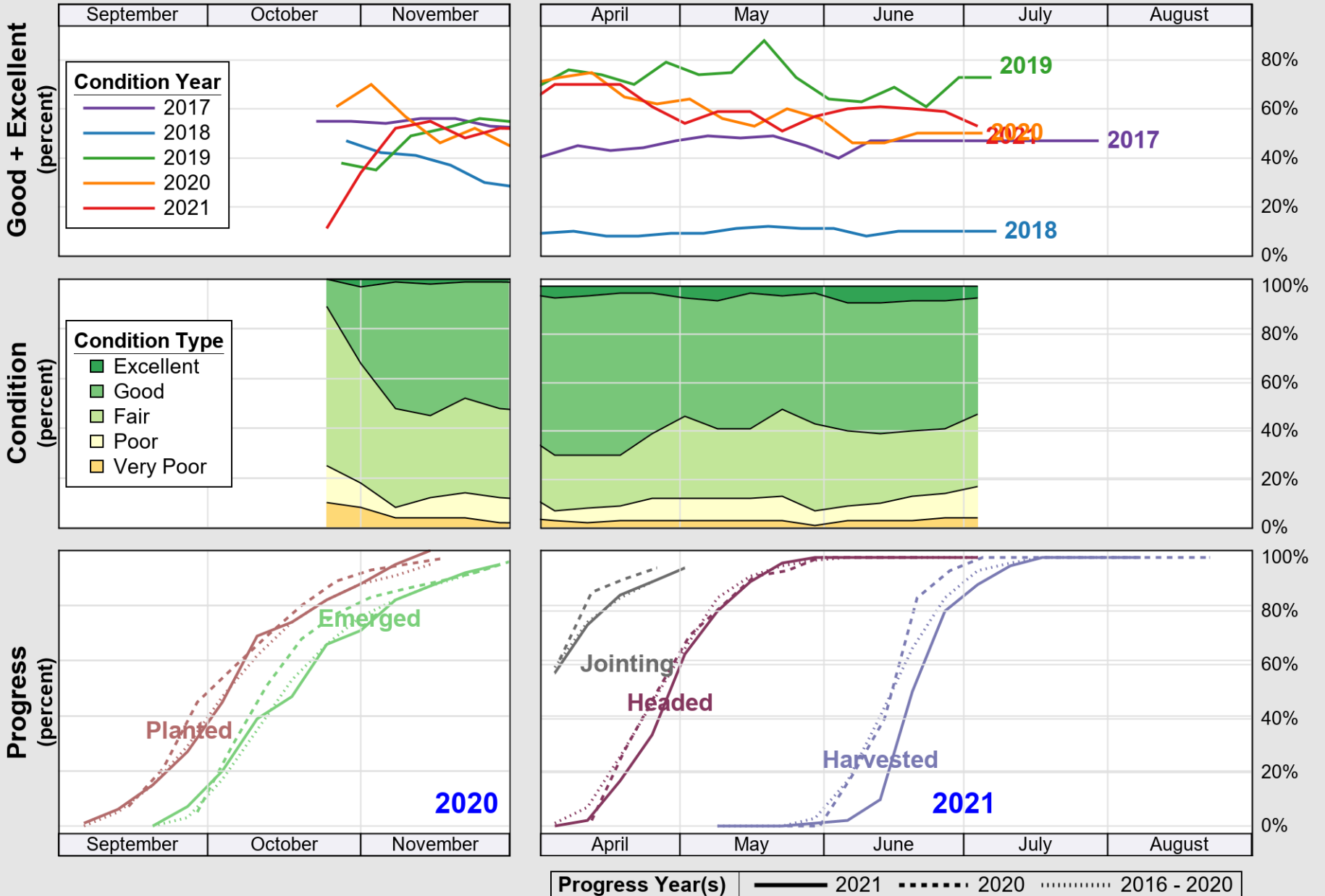


Source: National Agricultural Statistics Service (NASS), Crop Progress Report

USDA

# Crop Progress and Condition: Winter Wheat in Oklahoma , 2021

NASS



Source: National Agricultural Statistics Service (NASS), Crop Progress Report