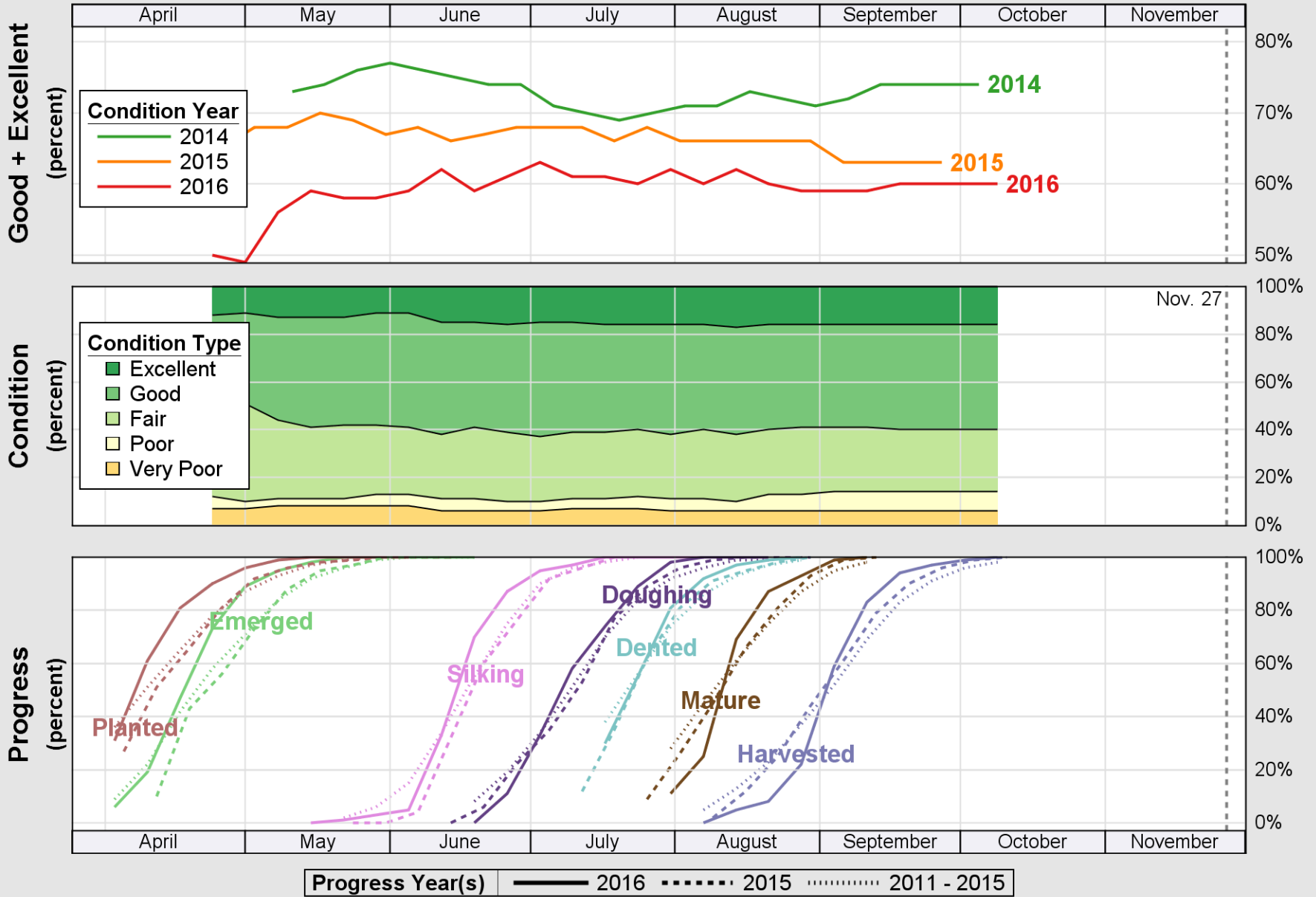


USDA

Crop Progress and Condition: Corn in Arkansas , 2016

NASS

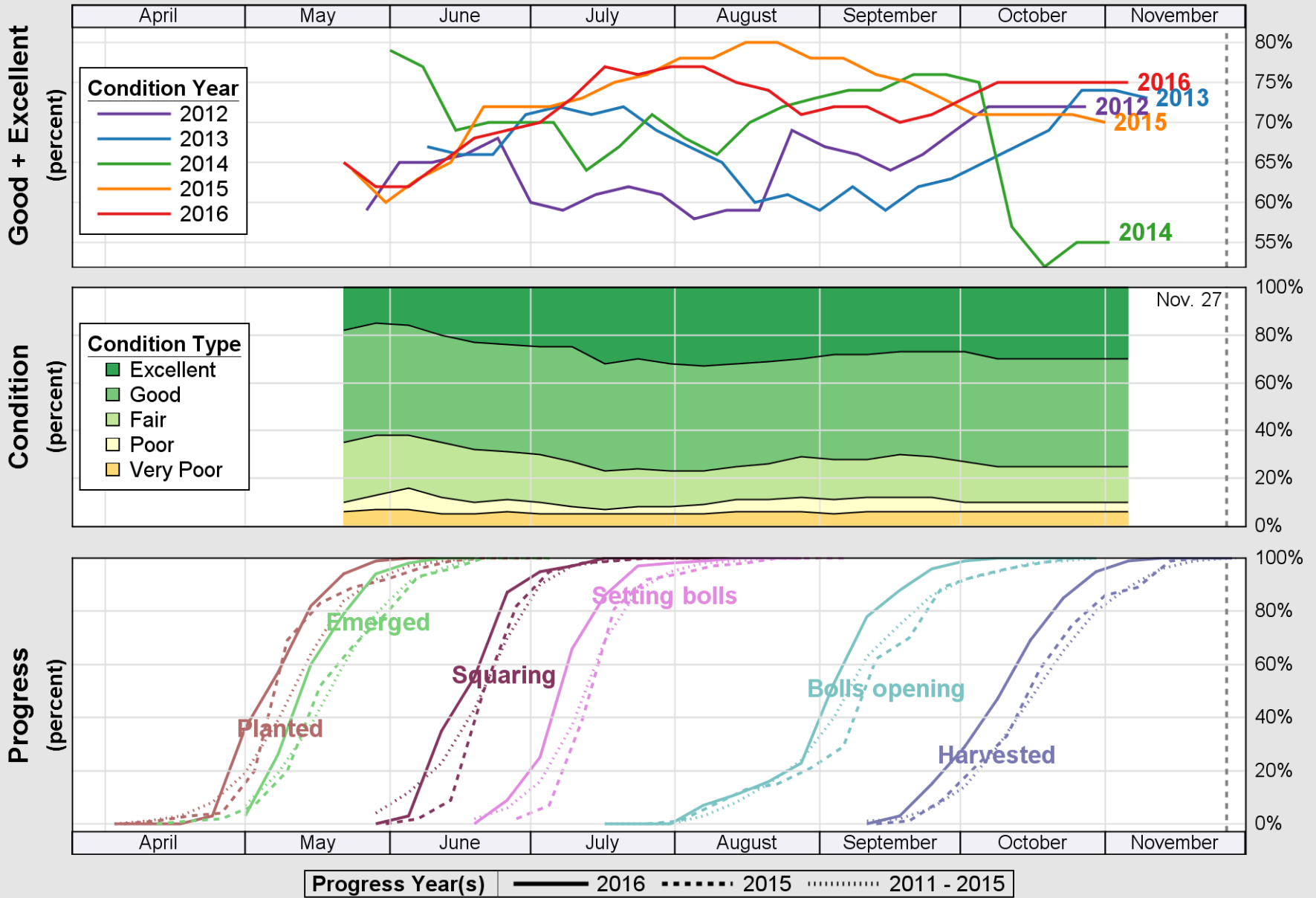


Source: National Agricultural Statistics Service (NASS), Crop Progress Report

USDA

Crop Progress and Condition: Cotton in Arkansas, 2016

NASS

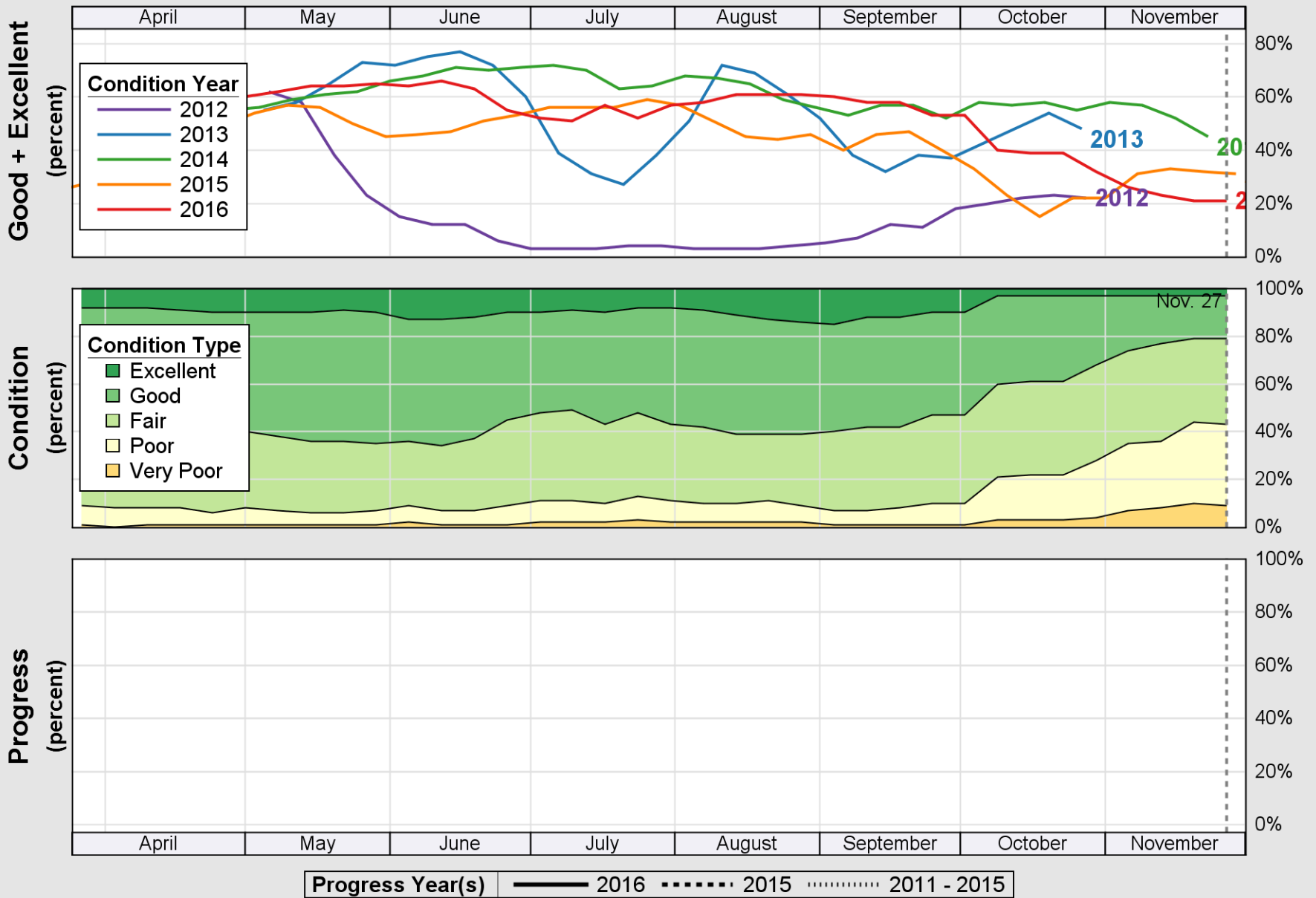


Source: National Agricultural Statistics Service (NASS), Crop Progress Report

USDA

Crop Progress and Condition: Pasture and Range in Arkansas , 2016

NASS

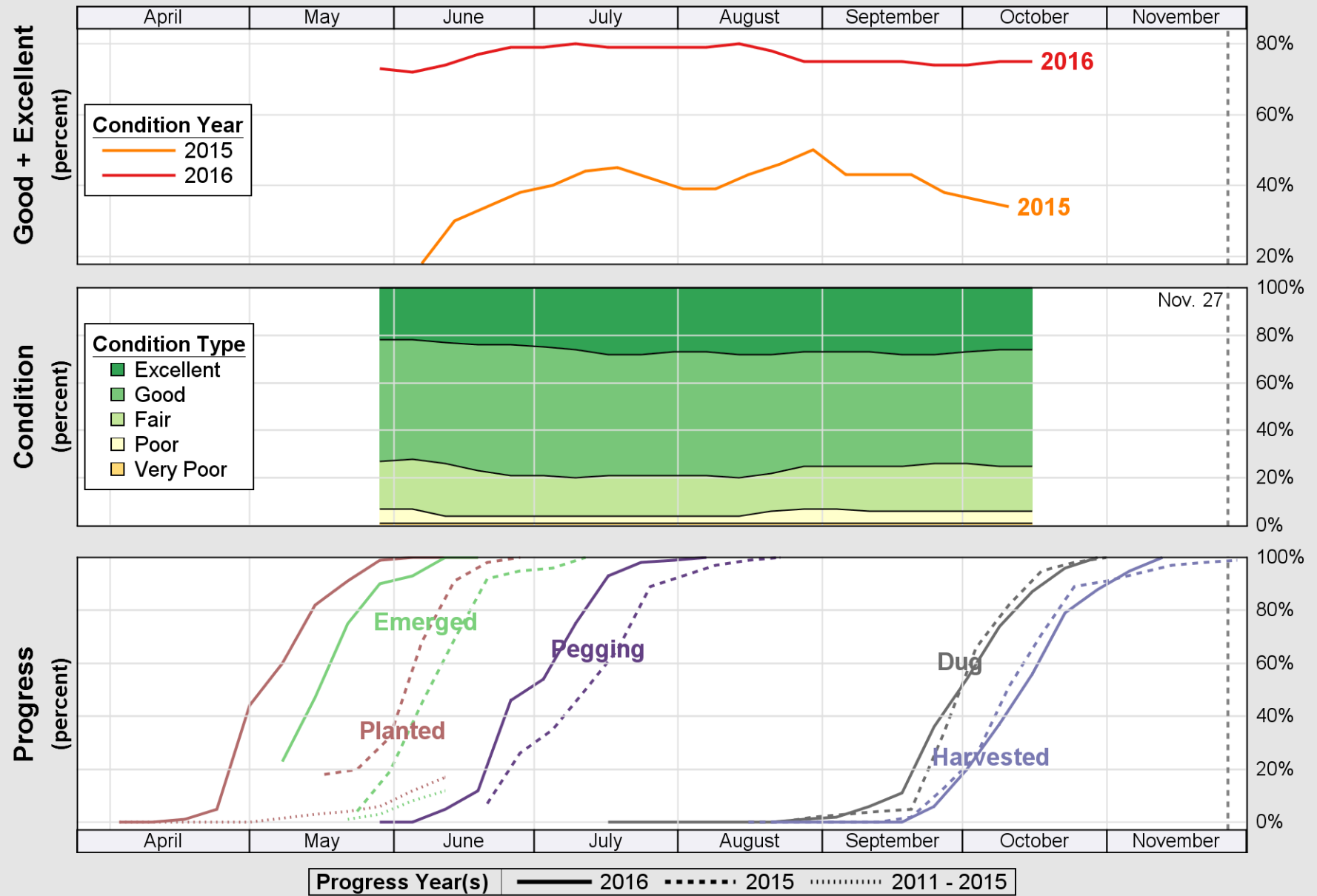


Source: National Agricultural Statistics Service (NASS), Crop Progress Report

USDA

Crop Progress and Condition: Peanuts in Arkansas , 2016

NASS

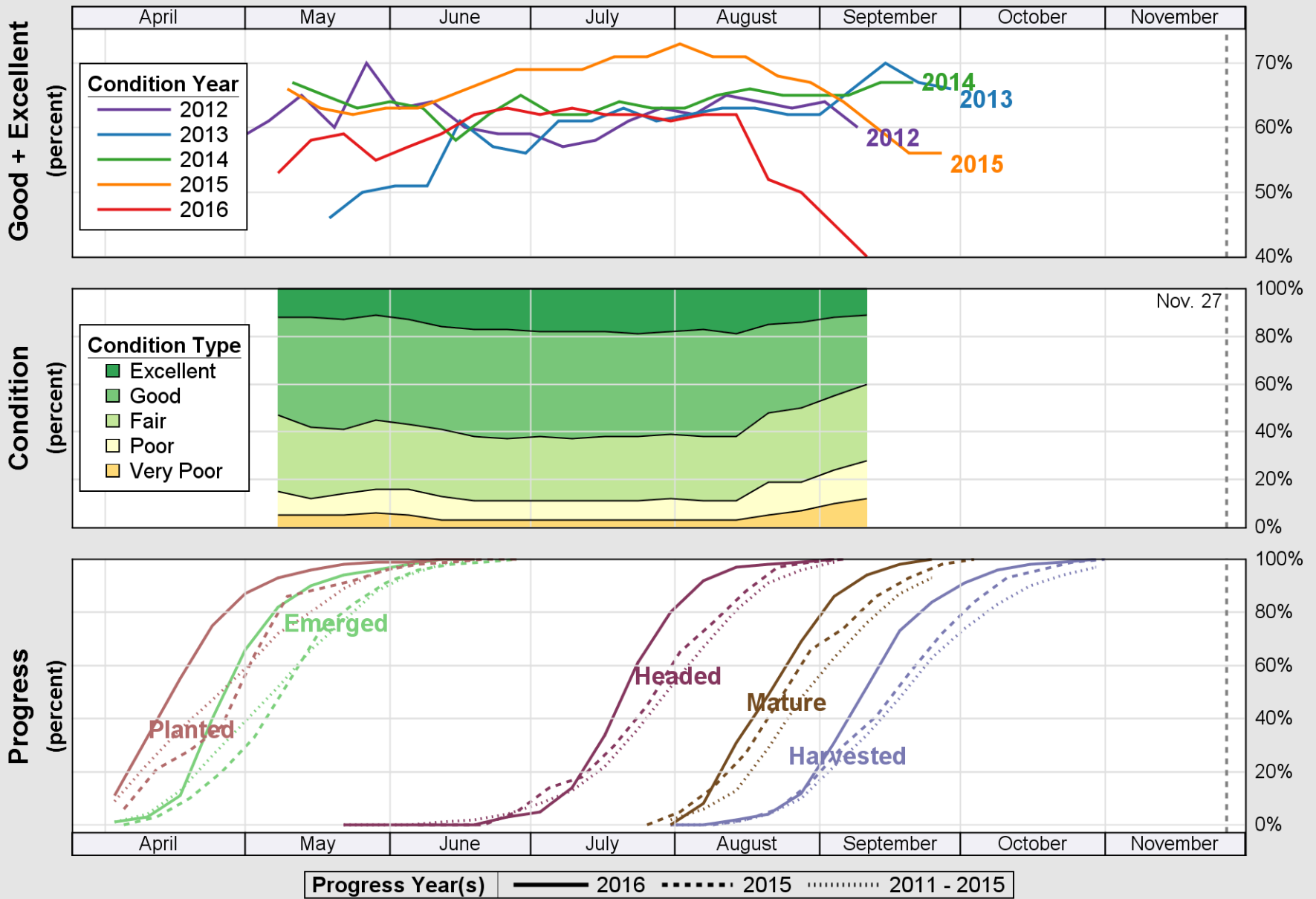


Source: National Agricultural Statistics Service (NASS), Crop Progress Report

USDA

Crop Progress and Condition: Rice in Arkansas , 2016

NASS

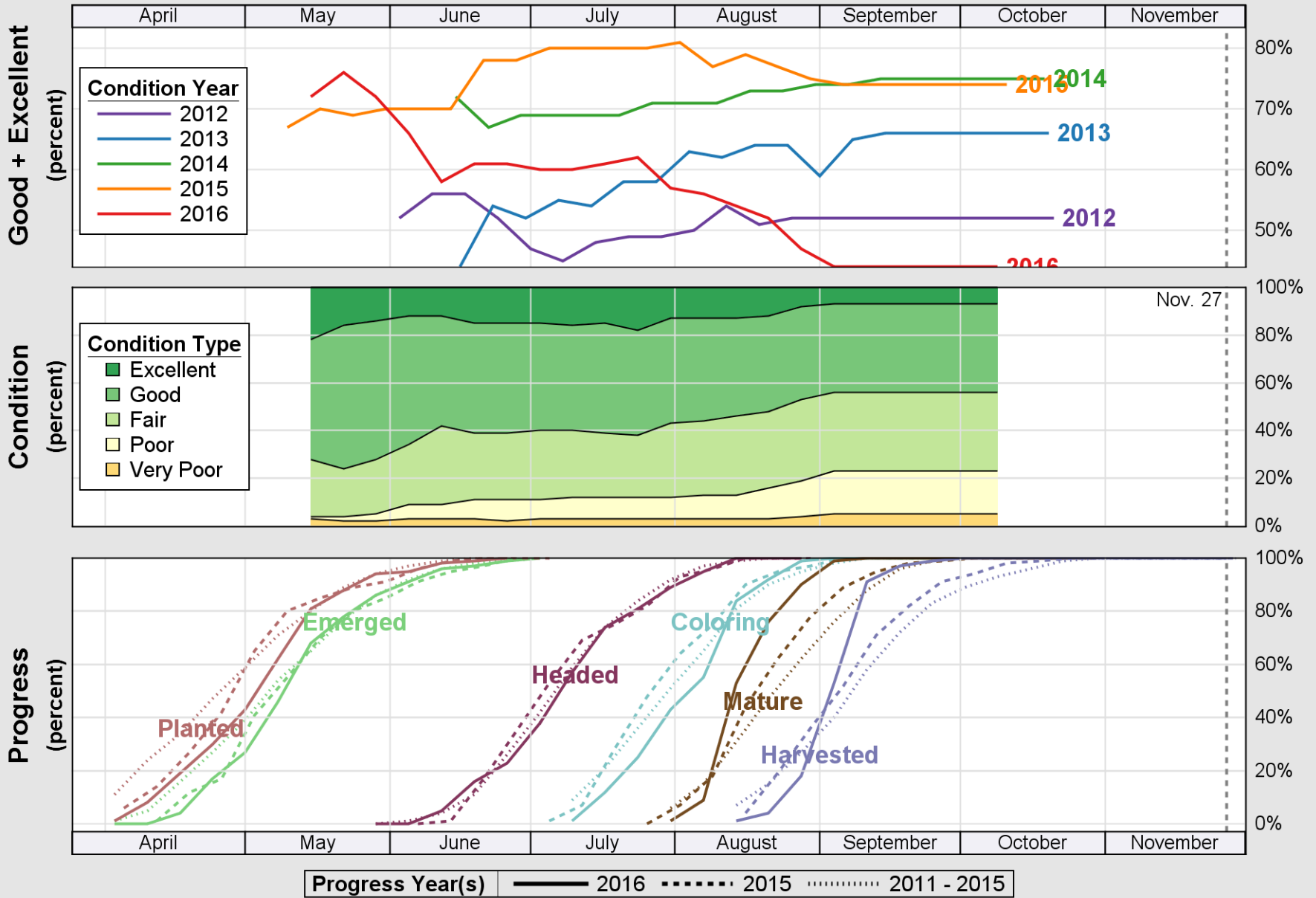


Source: National Agricultural Statistics Service (NASS), Crop Progress Report

USDA

Crop Progress and Condition: Sorghum in Arkansas , 2016

NASS

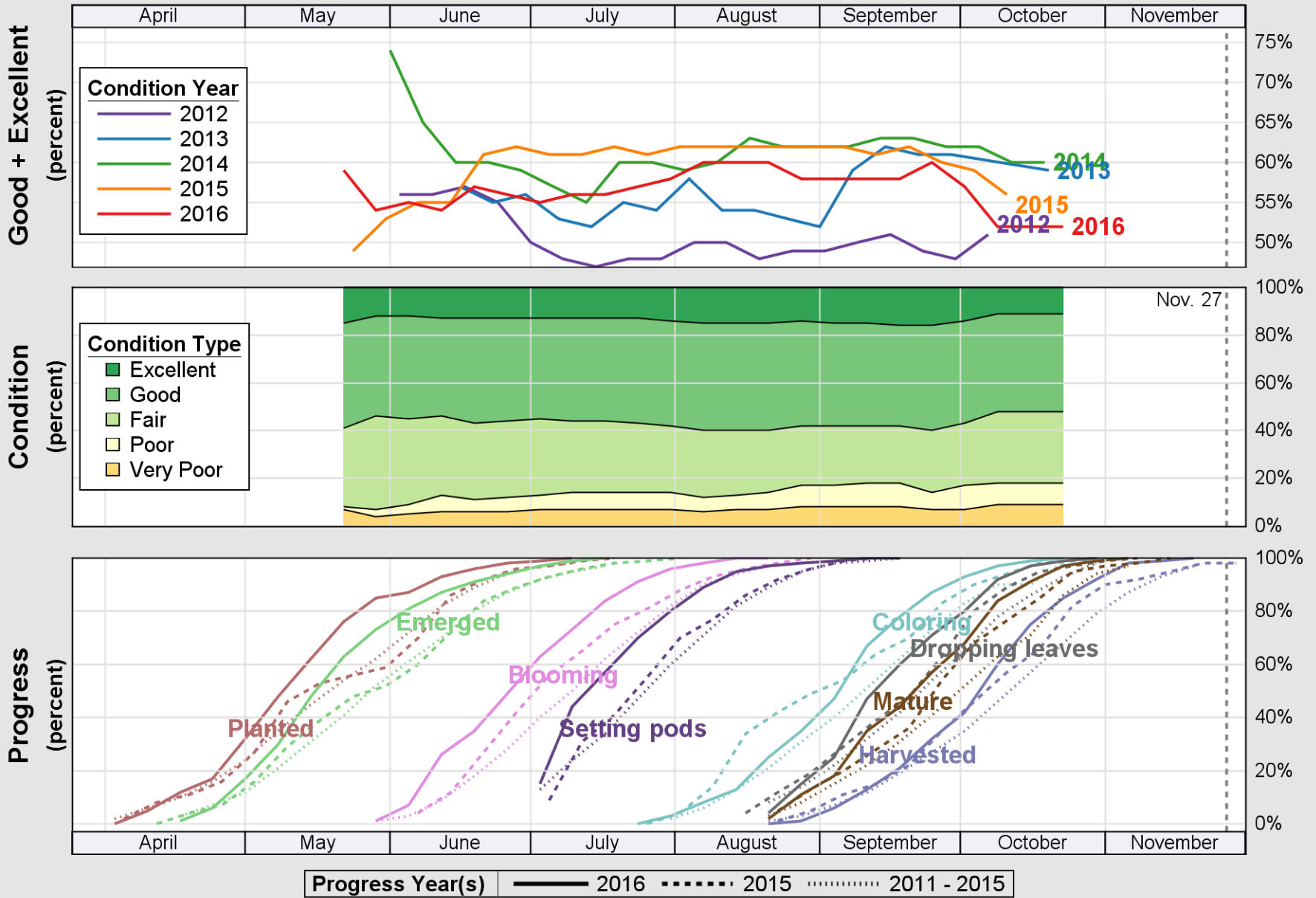


Source: National Agricultural Statistics Service (NASS), Crop Progress Report

USDA

Crop Progress and Condition: Soybeans in Arkansas , 2016

NASS

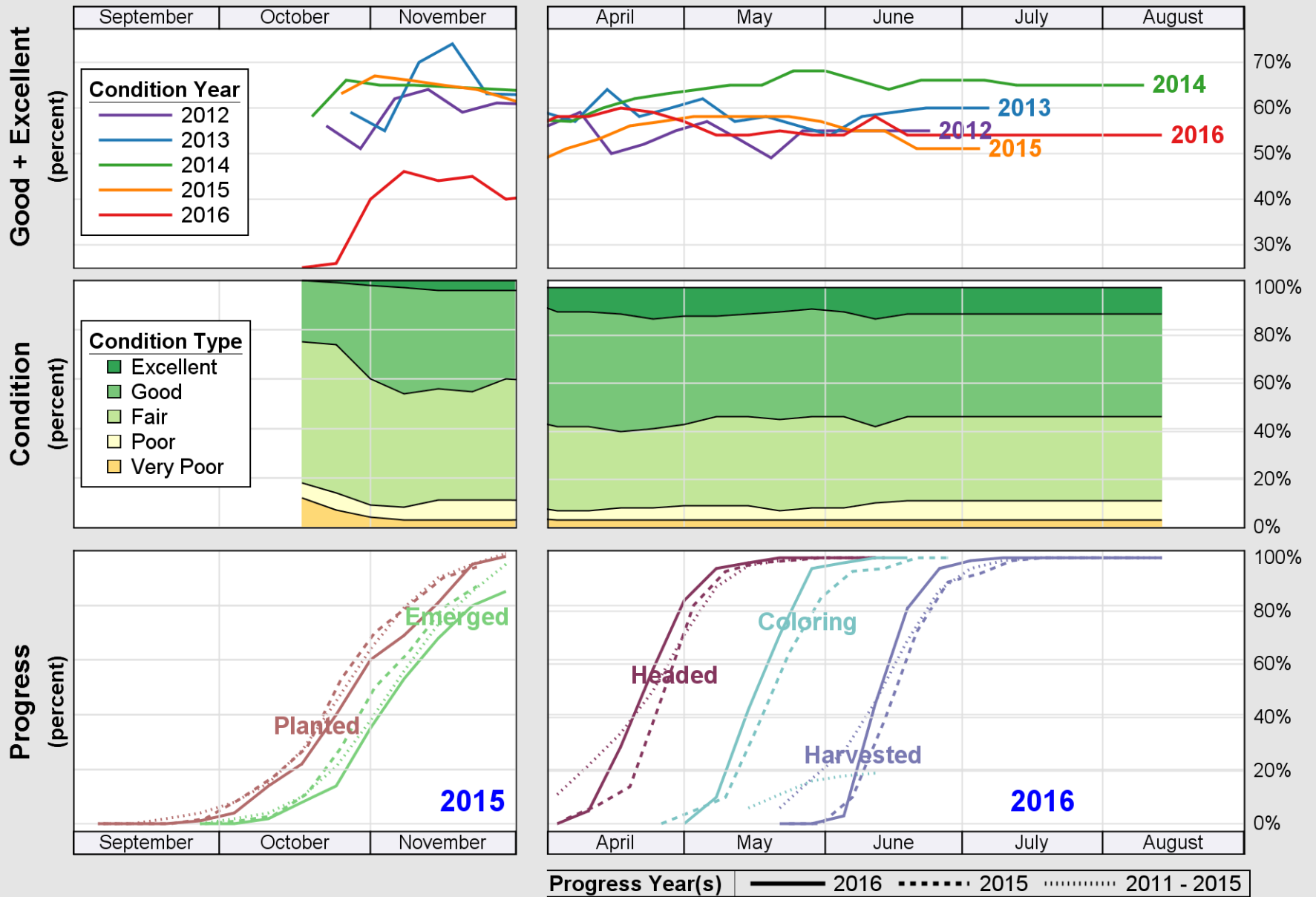


Source: National Agricultural Statistics Service (NASS), Crop Progress Report

USDA

Crop Progress and Condition: Winter Wheat in Arkansas , 2016

NASS



Source: National Agricultural Statistics Service (NASS), Crop Progress Report