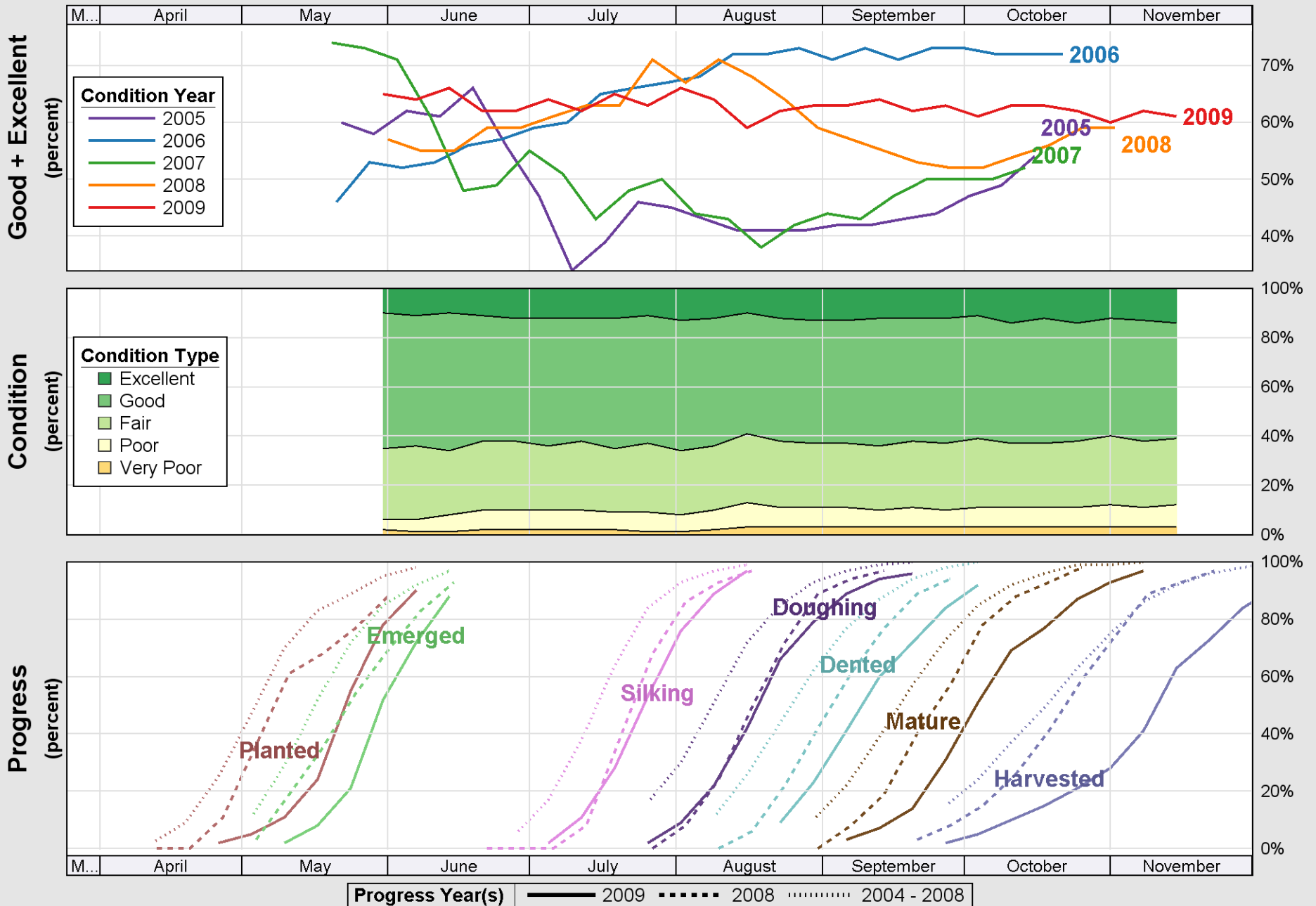
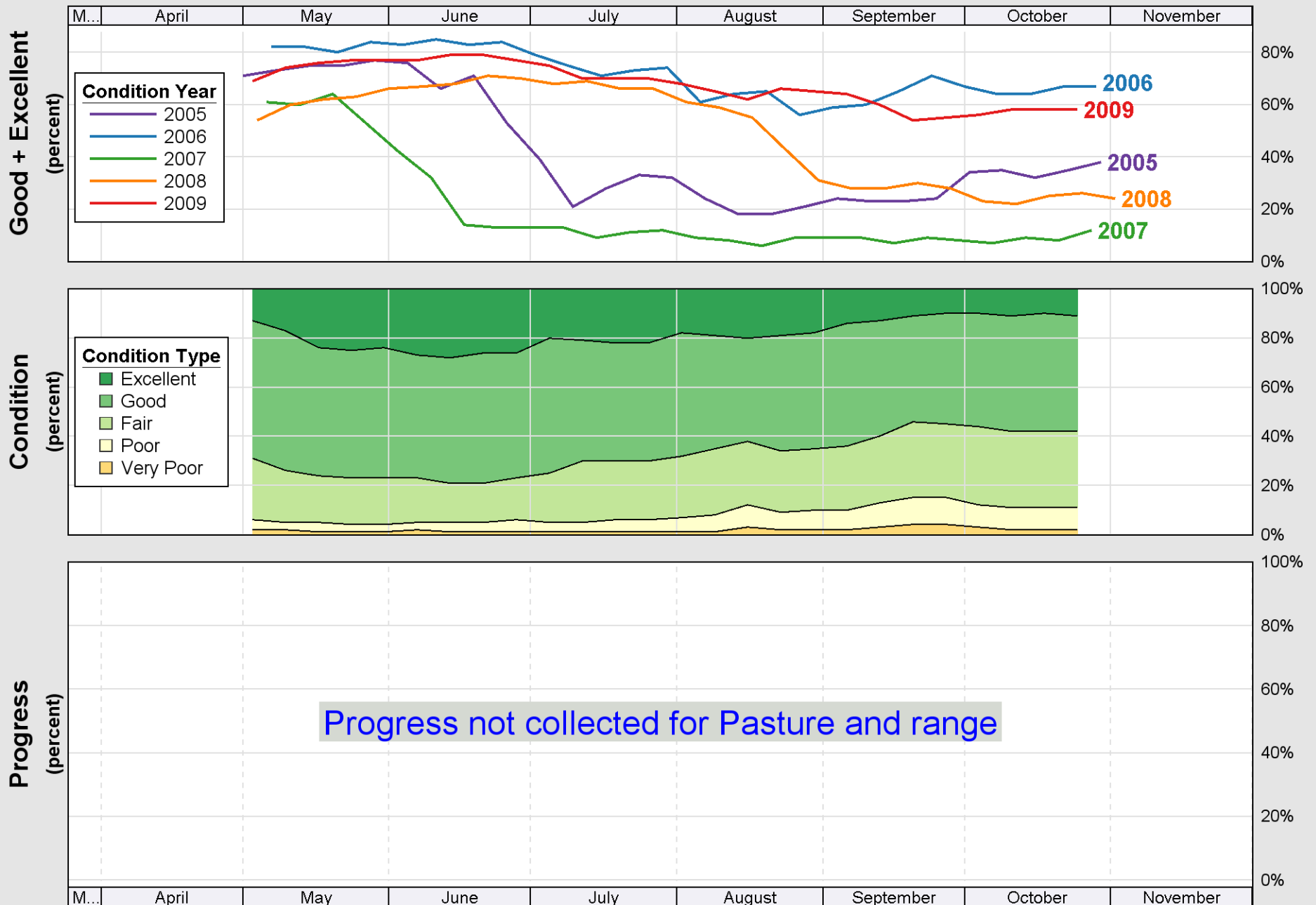


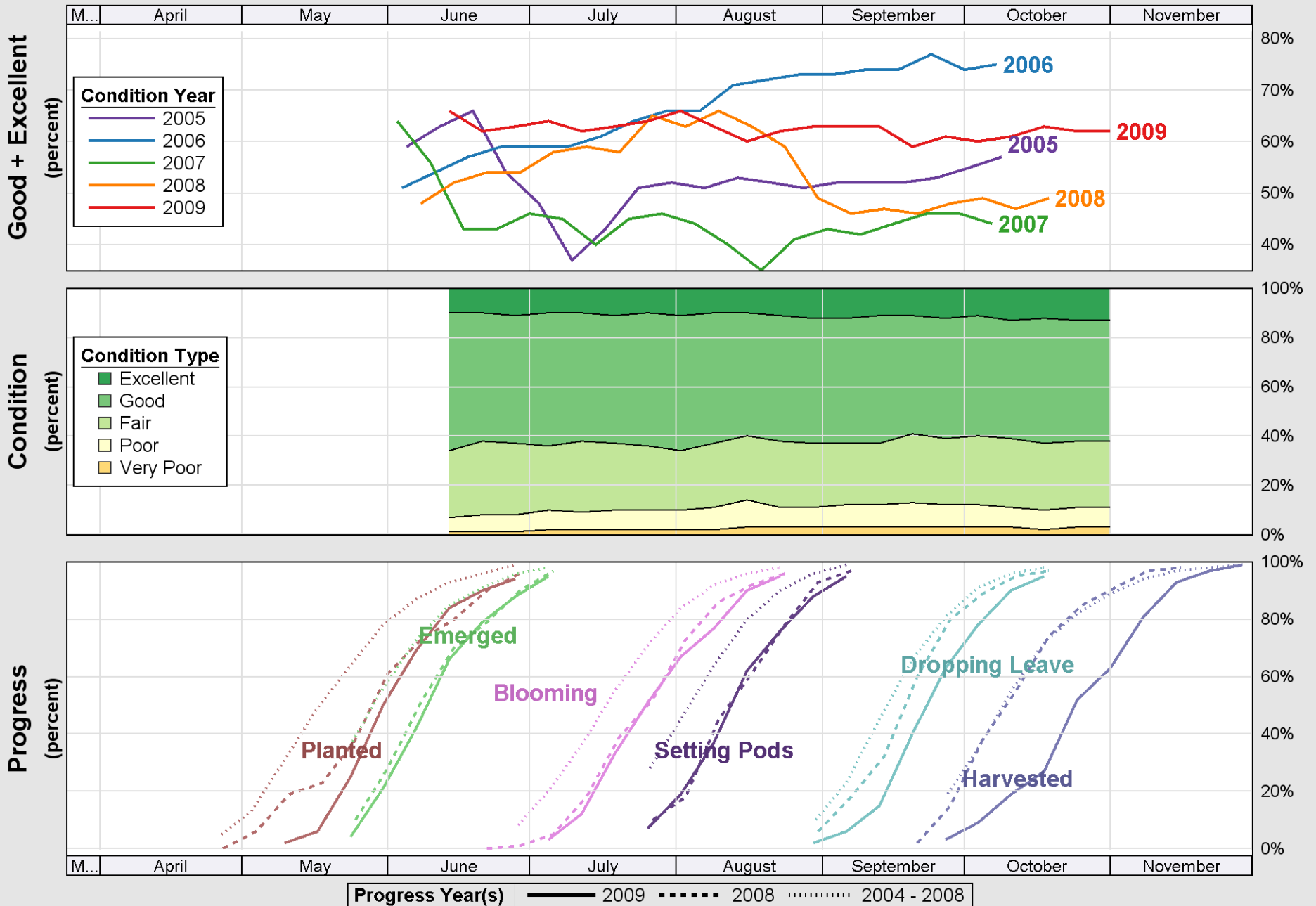
# Crop Progress and Condition: Corn in Indiana , 2009



Source: National Agricultural Statistics Service (NASS), Crop Progress Report



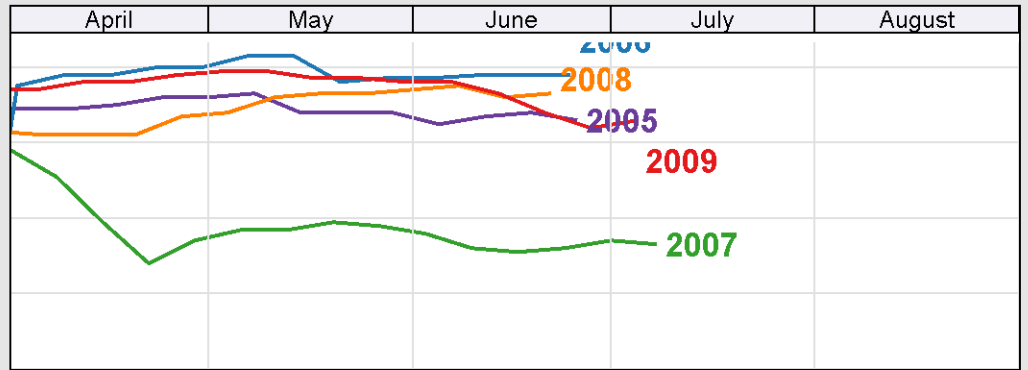
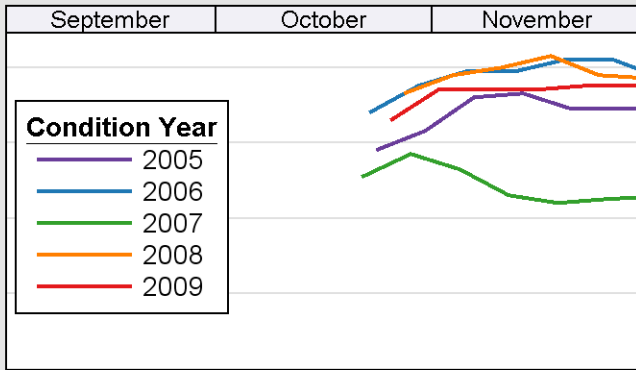
# Crop Progress and Condition: Soybeans in Indiana , 2009



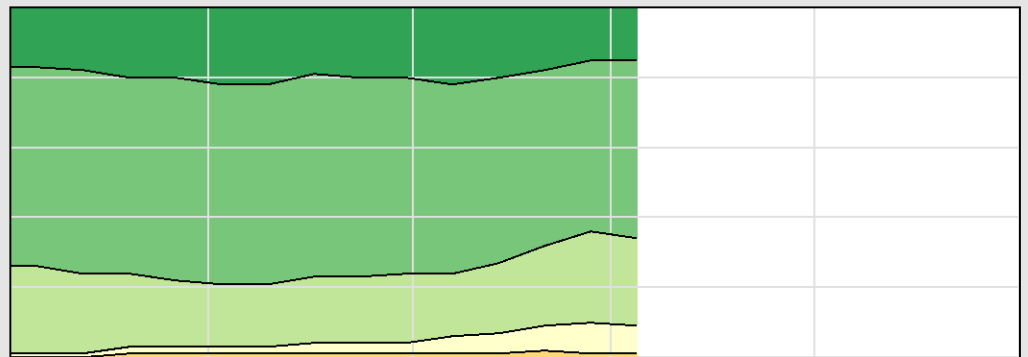
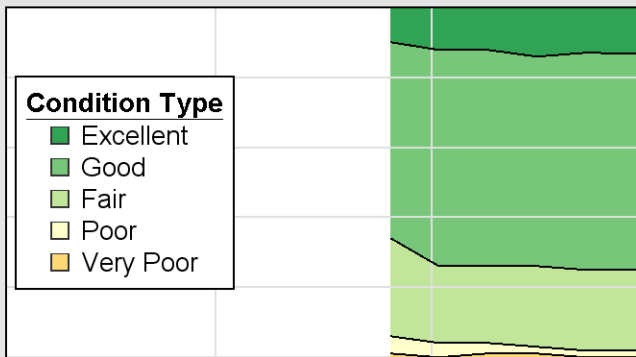
Source: National Agricultural Statistics Service (NASS), Crop Progress Report

# Crop Progress and Condition: Winter wheat in Indiana , 2009

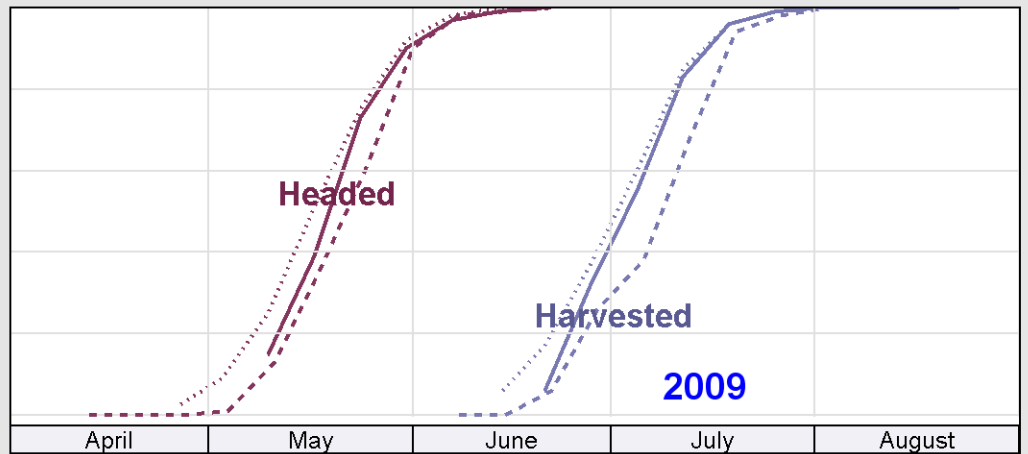
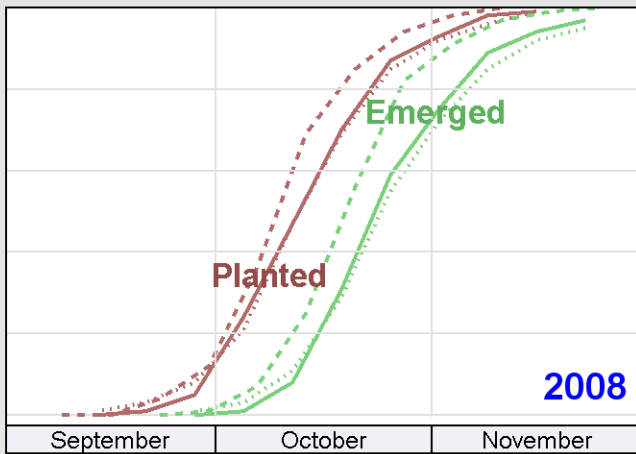
Good + Excellent  
(percent)



Condition  
(percent)



Progress  
(percent)



**Progress Year(s)** ——— 2009    ····· 2008    ······ 2004 - 2008