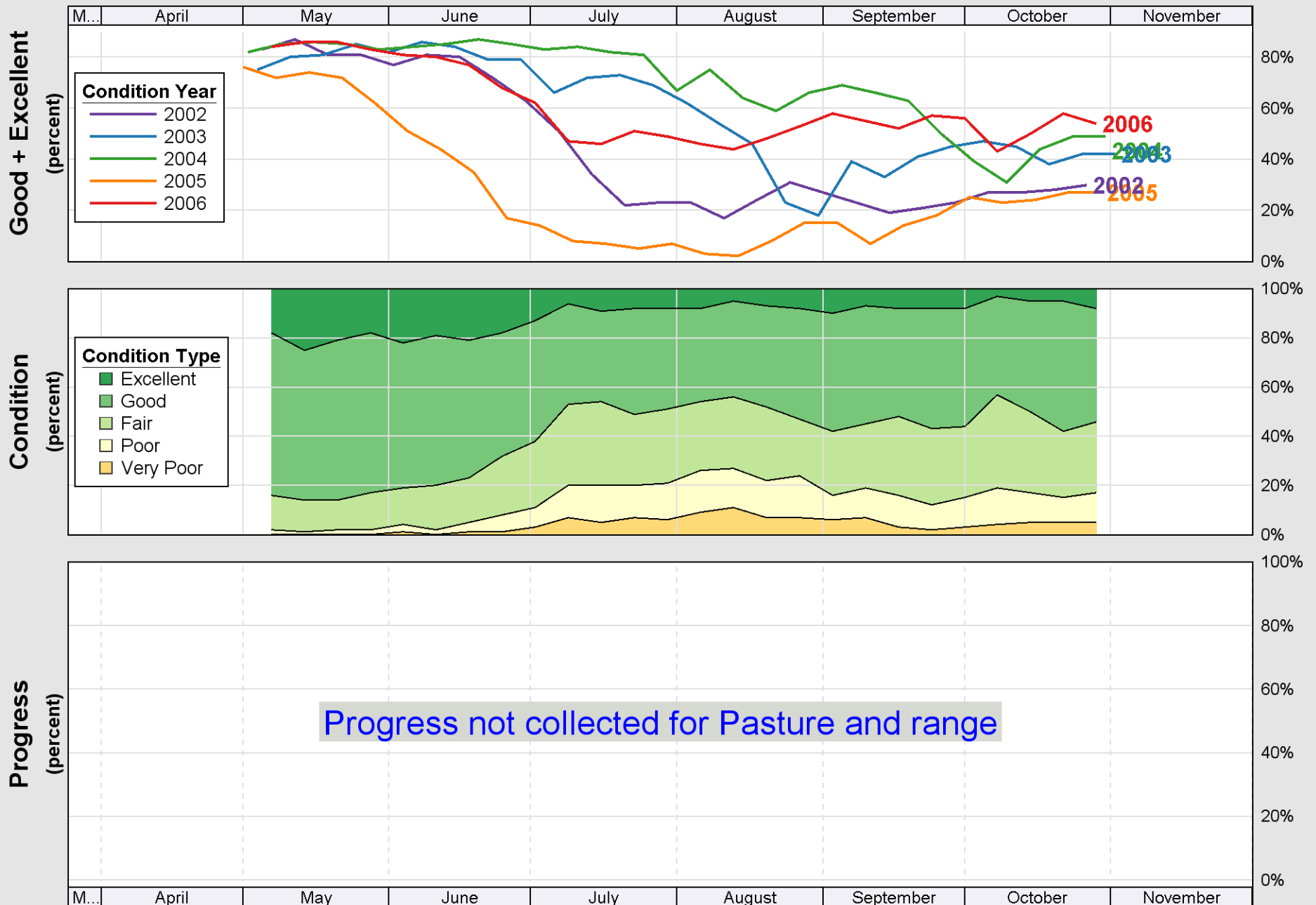
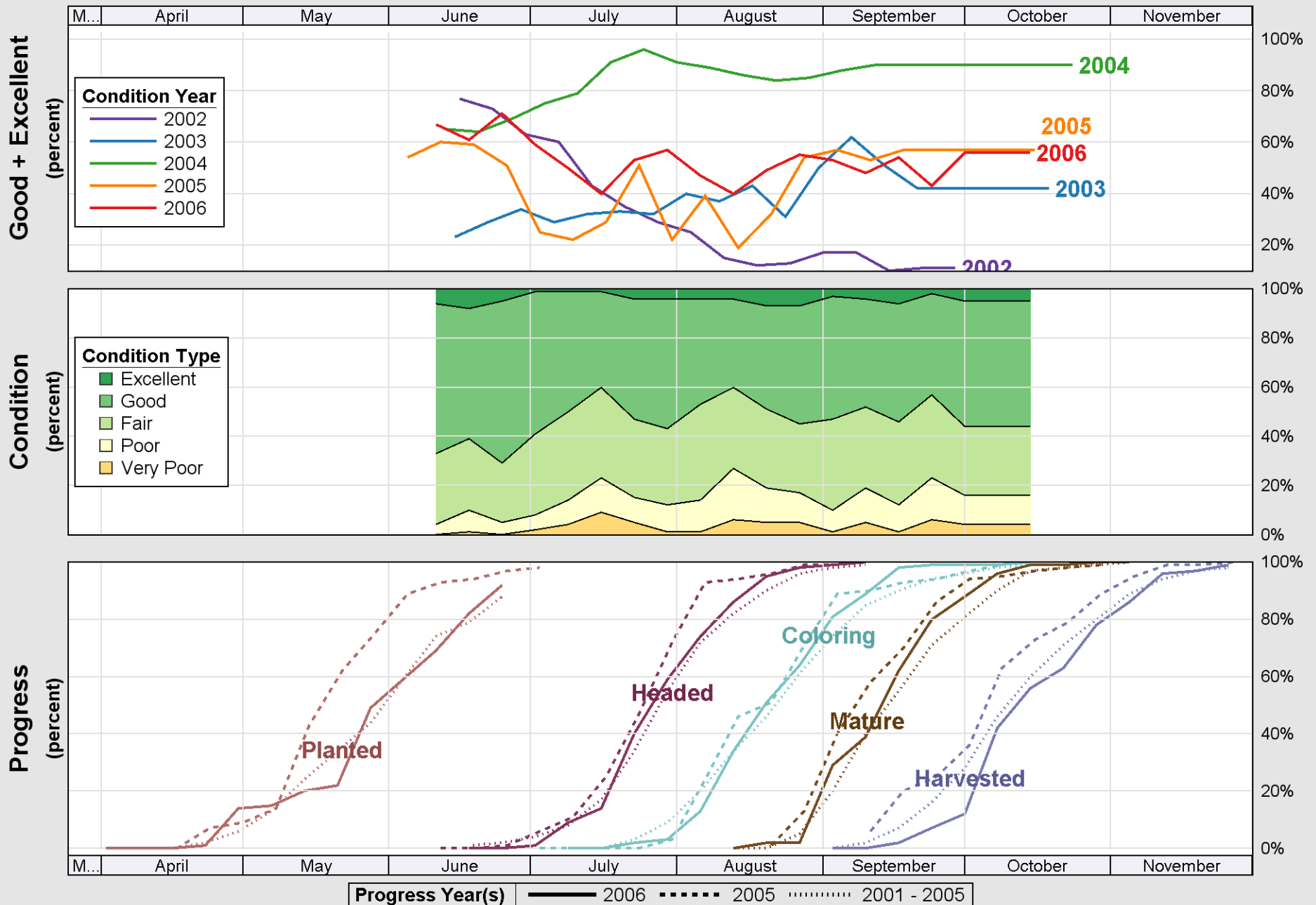


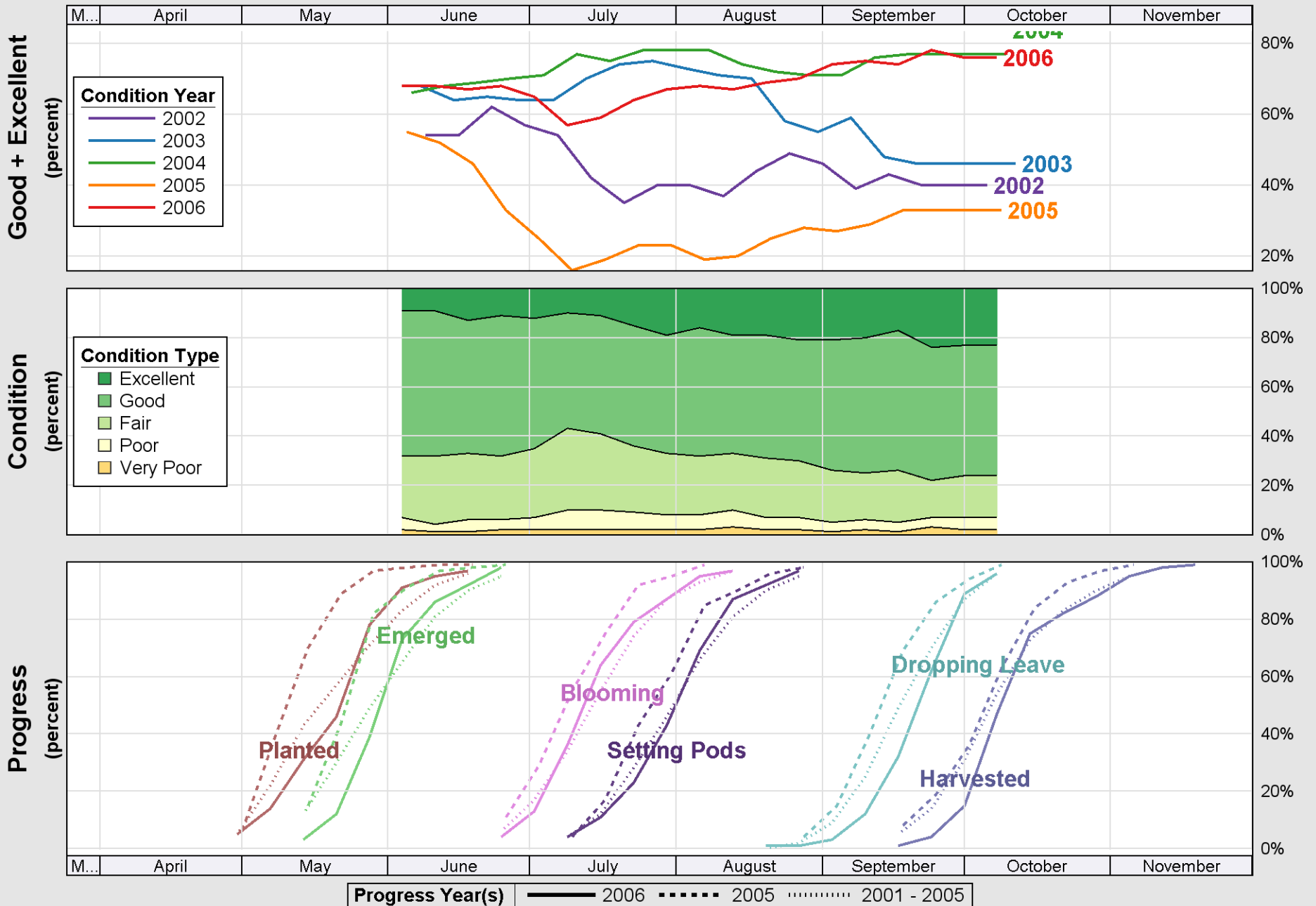
Source: National Agricultural Statistics Service (NASS), Crop Progress Report



Source: National Agricultural Statistics Service (NASS), Crop Progress Report

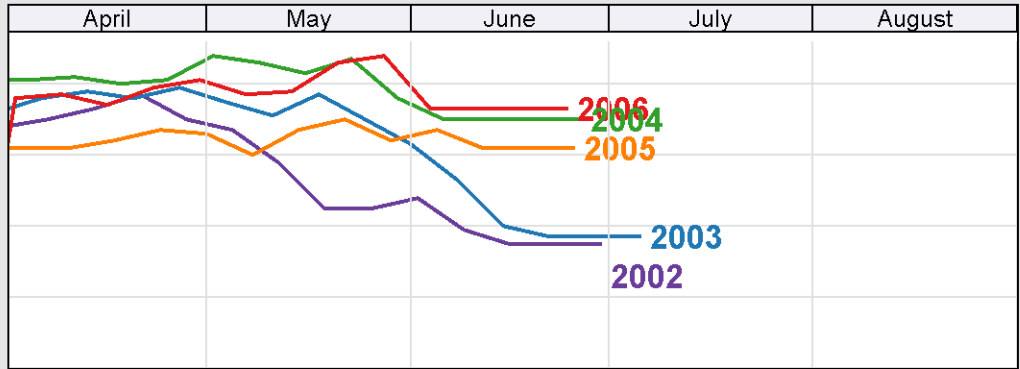
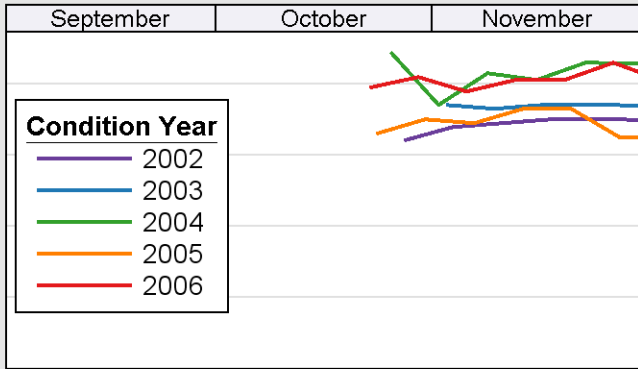


Crop Progress and Condition: Soybeans in Illinois , 2006

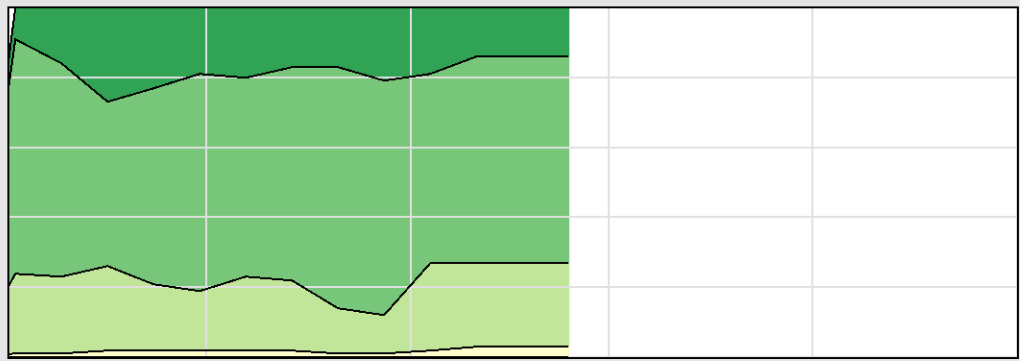


Source: National Agricultural Statistics Service (NASS), Crop Progress Report

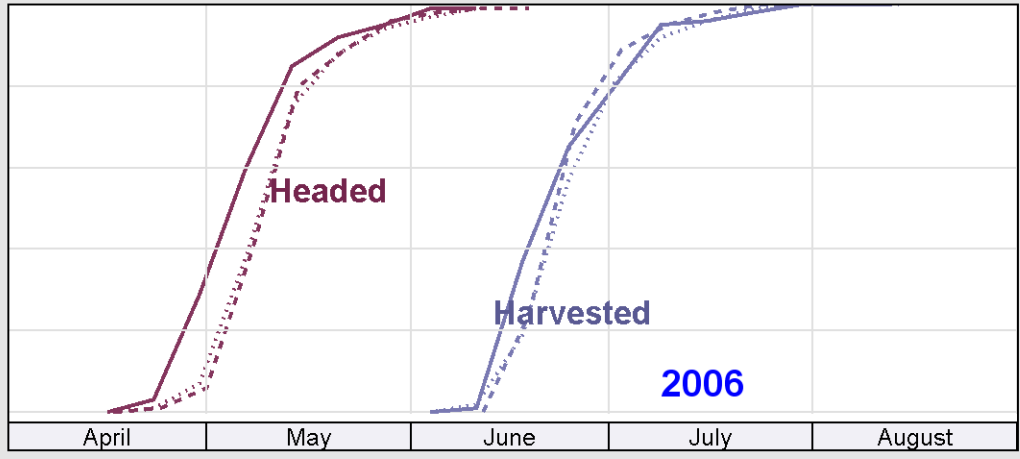
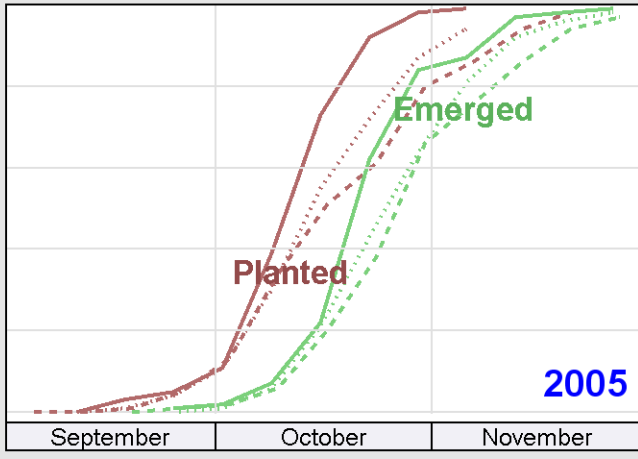
Good + Excellent
(percent)



Condition
(percent)



Progress
(percent)



Progress Year(s) ——— 2006 - - - - - 2005 ······ 2001 - 2005