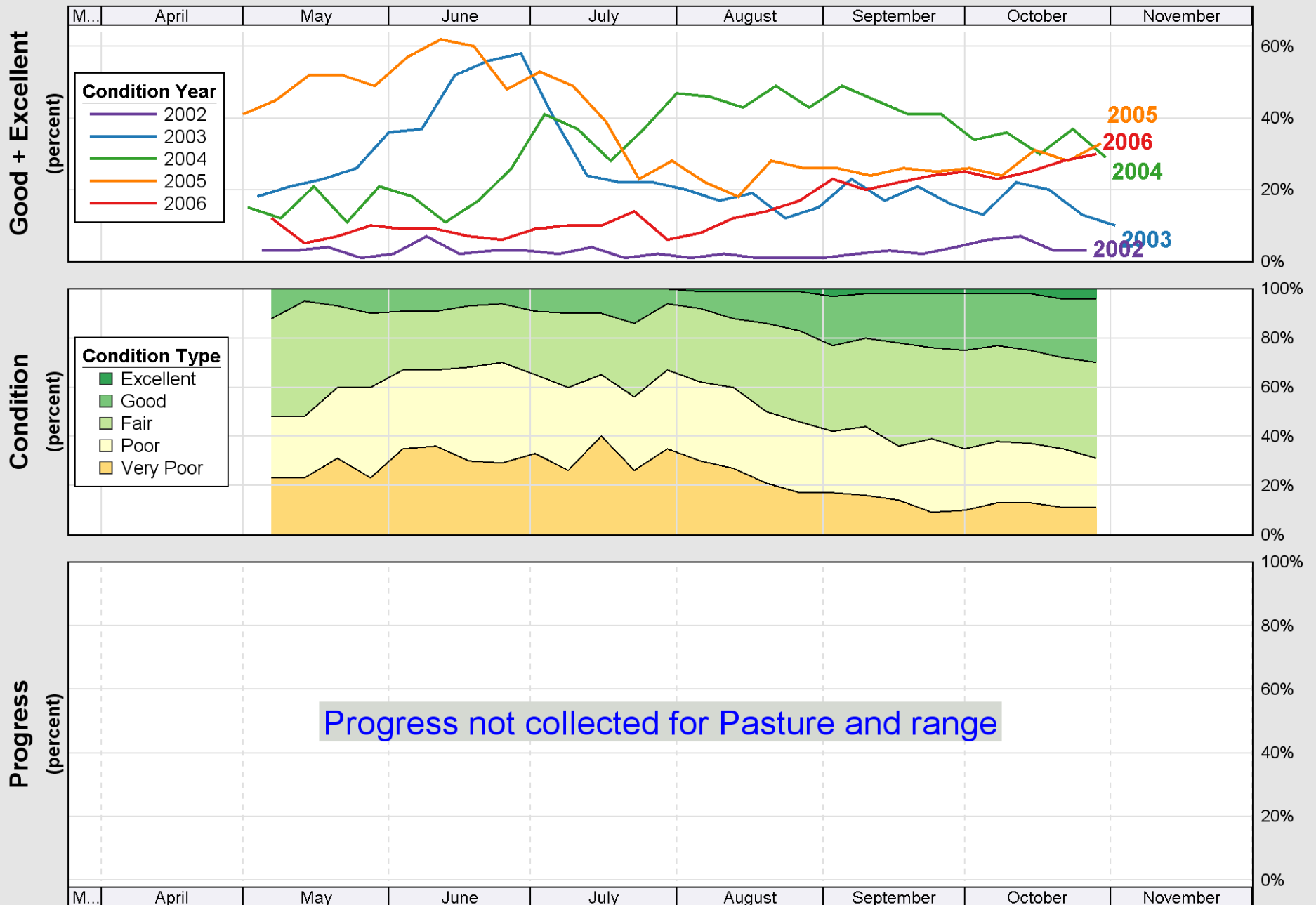
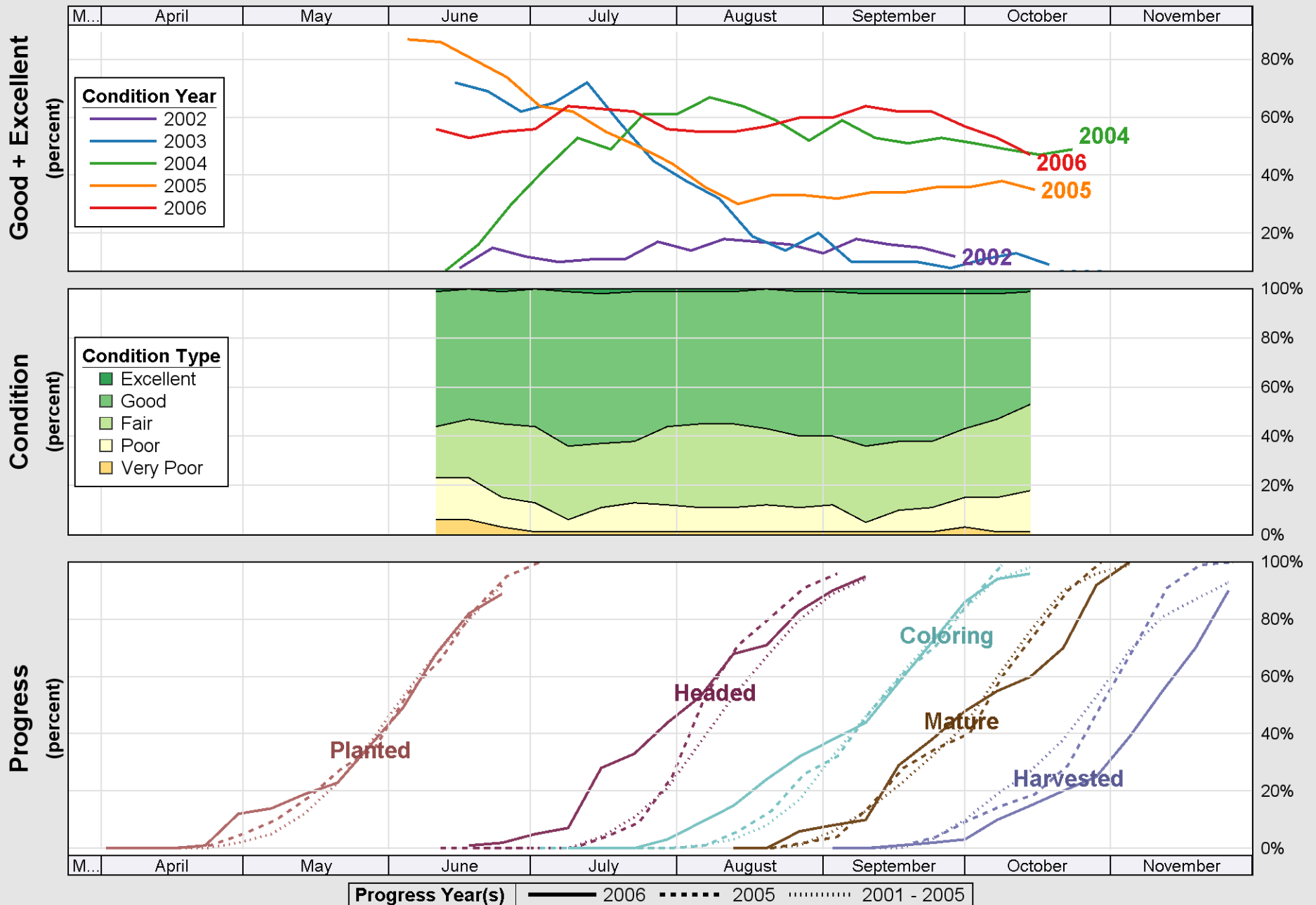


Source: National Agricultural Statistics Service (NASS), Crop Progress Report

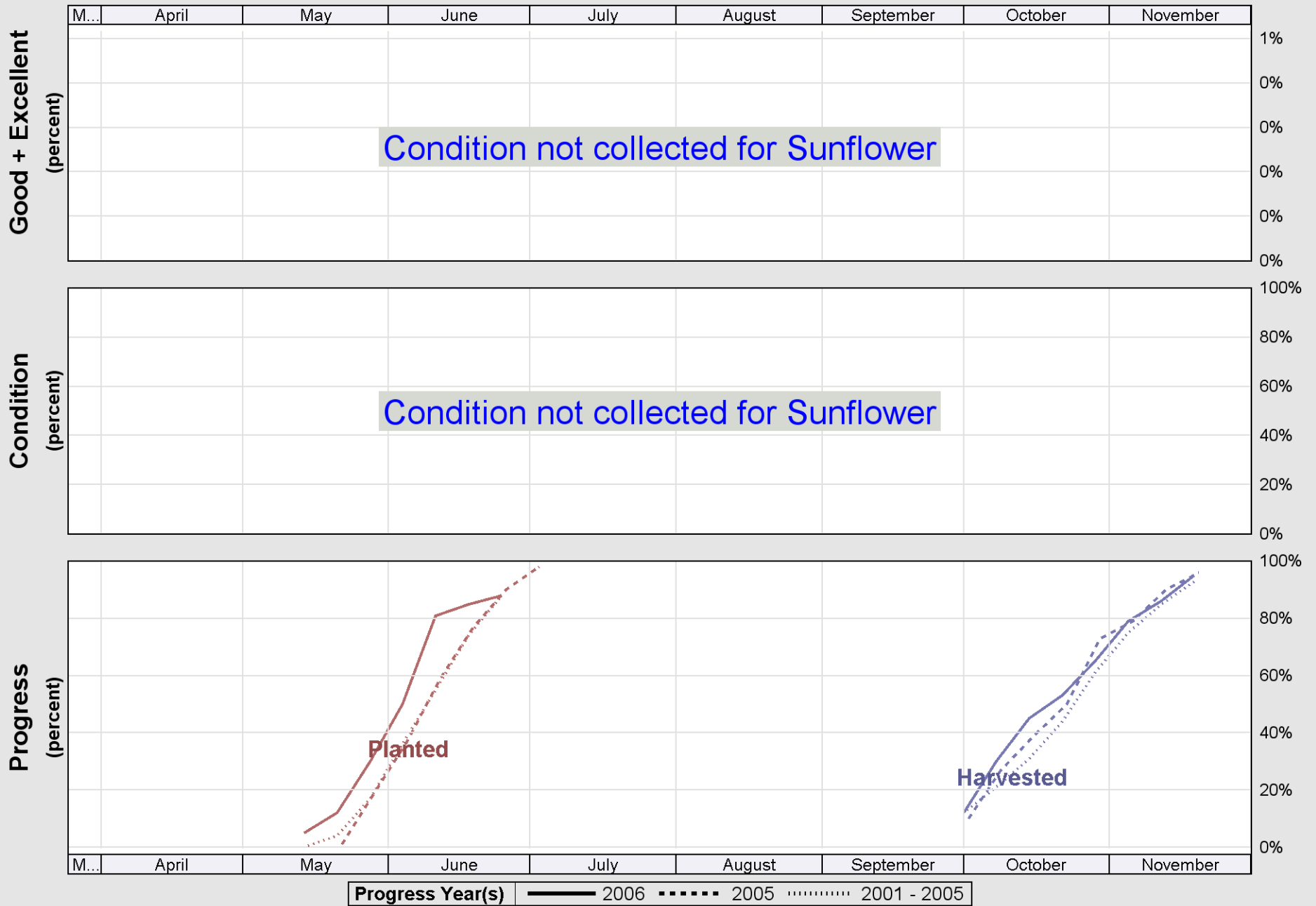


Source: National Agricultural Statistics Service (NASS), Crop Progress Report

Crop Progress and Condition: Sorghum in Colorado , 2006



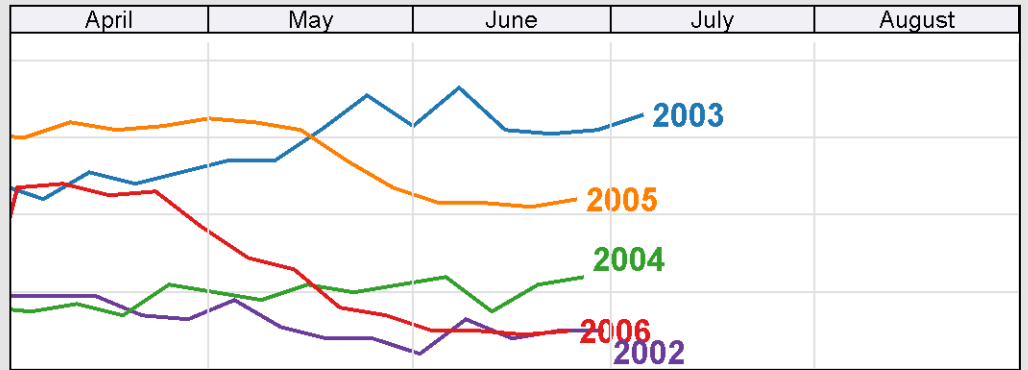
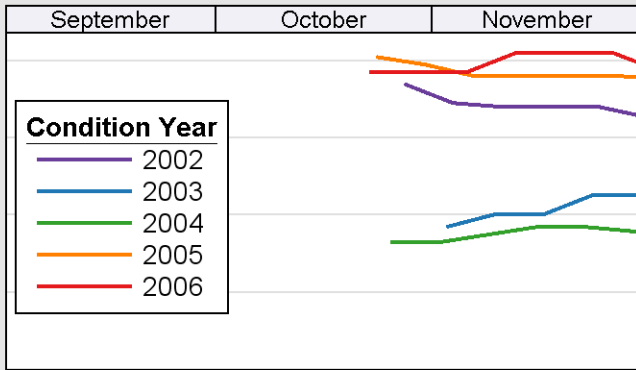
Source: National Agricultural Statistics Service (NASS), Crop Progress Report



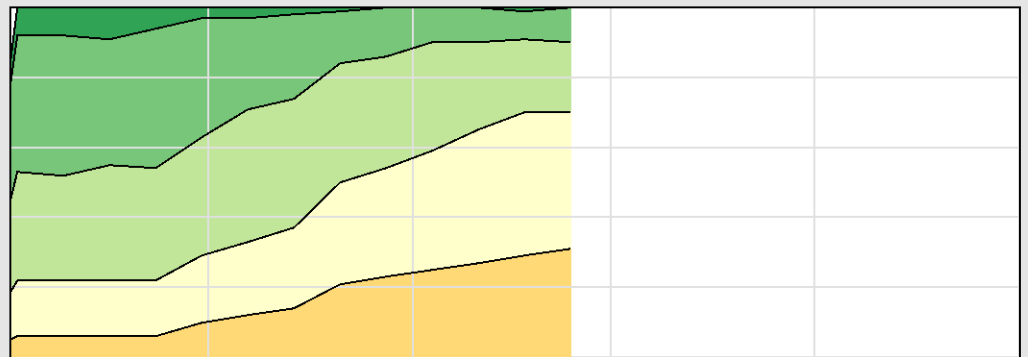
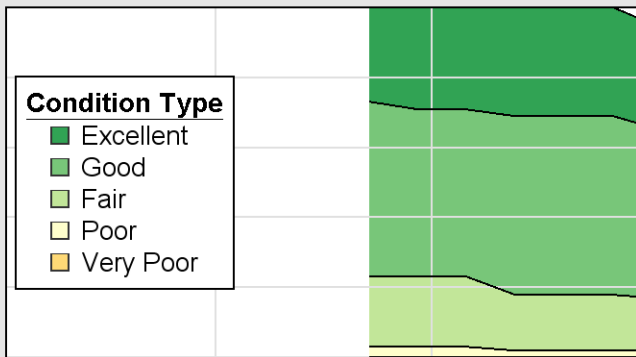
Source: National Agricultural Statistics Service (NASS), Crop Progress Report

Crop Progress and Condition: Winter wheat in Colorado , 2006

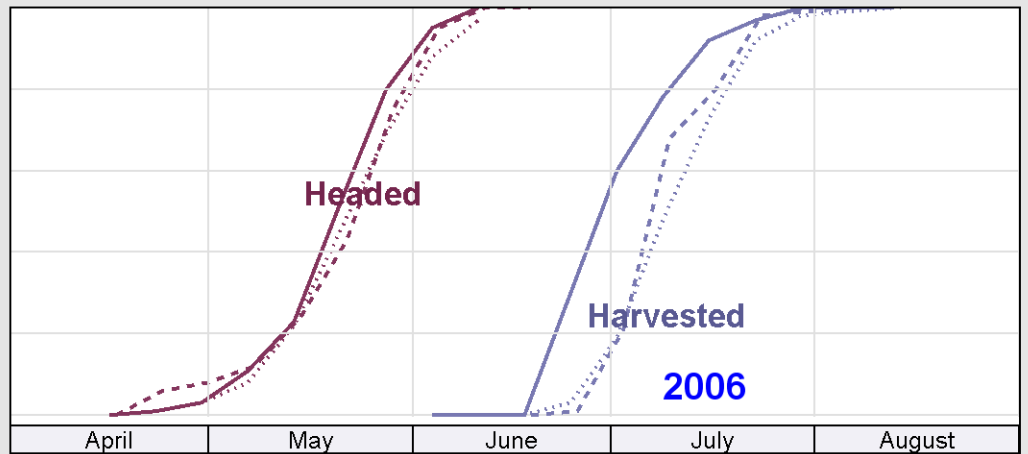
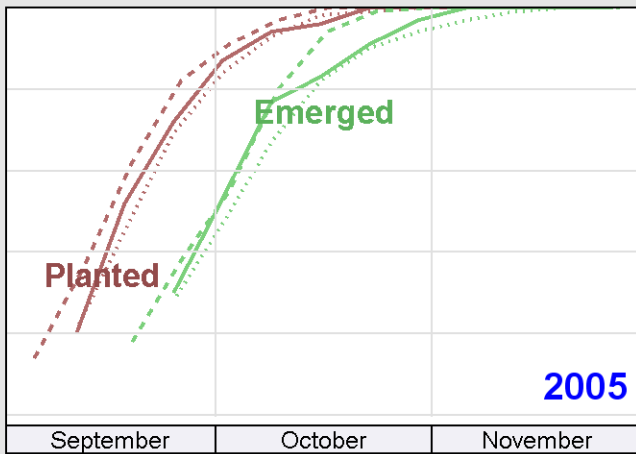
Good + Excellent
(percent)



Condition
(percent)



Progress
(percent)



Progress Year(s) ——— 2006 ····· 2005 2001 - 2005

Source: National Agricultural Statistics Service (NASS), Crop Progress Report